



# Public Health Services One Health Epidemiology Program Newsletter

---

## Epidemiology & Immunization Services Branch

Thursday, June 5, 2025

---

[Zoonotic Diseases](#) | [Announcements](#) | [County Resources](#) | [How to Contact Us](#) | [Community Highlights](#)

---

## Zoonotic Diseases

### New World Screwworm



Ventral view of a New World Screwworm (NWS) larva, highlighting the mandibles on the anterior end of the body.

*Image courtesy of the Centers for Disease Control and Prevention (CDC).*



The NWS flies have orange eyes, a metallic blue or green body, and three darker-shaded stripes along their backs.

*Image courtesy of Denise Bonilla, U.S. Department of Agriculture (USDA).*



NWS infestation in Key deer during the 2016 outbreak in the Florida Keys.

*Image courtesy of Samantha Gibbs, U.S. Fish and Wildlife Service.*

## Background

New World Screwworm (NWS) is an infestation caused by a parasitic insect (*Cochliomyia hominivorax*). Transmission occurs when NWS fly larvae or maggots infest tissue or flesh of warm-blooded animals, primarily livestock. Female NWS flies are attracted to open wounds and lay eggs on or in wounds by burrowing into the wound. Though rare, infestation can occur in humans.

Prior to 2023, the release of sterile male screwworm flies creating a biological barrier in Panama prevented NWS from moving north. Since then, cases have been detected in Costa Rica, Nicaragua, Honduras, Guatemala, Belize, El Salvador, and Mexico. The U.S. Department of Agriculture (USDA) has implemented trade restrictions [suspending the importation](#) of live cattle, horses, and bison through U.S. ports of entry along the southern border.

## Symptoms in Mammals and Birds

- Irritated behavior,
- Uncontrollable headshaking,
- The smell of decay,
- Presence of fly maggots or larvae in wounds, or
- Evidence of a myiasis (fly strike).

Contact your veterinarian and/or the [California Department of Food and Agriculture](#) (CDFA) within 24 hours if you notice any symptoms in mammals or birds. The CDFA can be contacted via phone at (909) 947-5932.

## Symptoms in Humans

- New or unexplained painful wounds or sores,
- Bleeding or drainage from open wounds or sores,
- Observing or feeling larvae or maggots in a skin wound or sore, or
- Odor coming from an infestation site.

## Human Case Prevention

- Use insect repellent,
- Wear long-sleeved shirts and pants when outdoors,
- Clean and cover open wounds, and
- Sleep indoors.

## Resources

- [New World Screwworm Outbreak in Central America | USDA](#)
- [About New World Screwworm Myiasis | CDC](#)

---

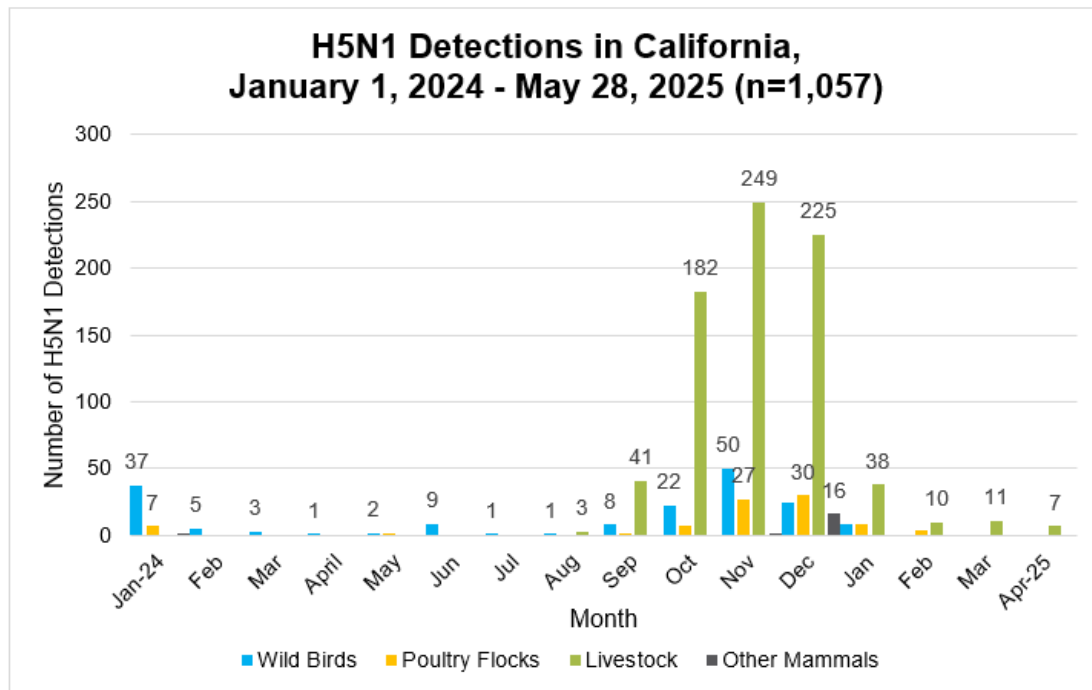
## Avian Influenza Updates

**Table 1. State and Local Detections of Avian Influenza A (H5N1), January 1, 2024 – May 28, 2025**

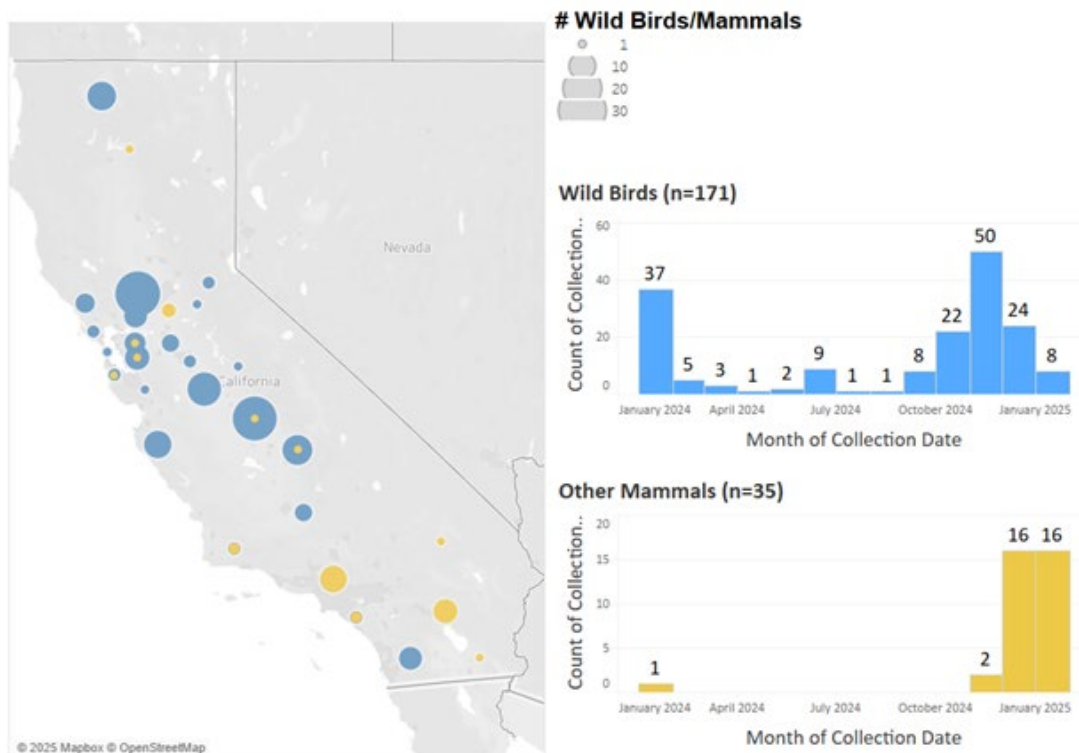
Species Type	San Diego County (n)	California (n)	Notes
Dairy Herds	0	766	Reported in CA (08/30/24 - 04/30/25).
Humans	0	38	CDC confirmed (10/3/24 - 01/16/25).
Poultry Flocks	0	85	Most recent in commercial flock, Riverside County (02/13/25).
Other Species	1*	35	Most recent collection in rats, Riverside County (01/29/25 - 01/31/25). *Cat from San Diego tested positive in Imperial County (01/22/25).
Wild Birds	7	171	Most recent in raven, Riverside County (01/25/25). In San Diego County: 1 pelican (10/19/24) and 6 gulls (11/13/24 - 12/13/24) confirmed for H5N1/HPAI.

Table 1: State and Local Detections of Avian Influenza A (H5N1), January 1, 2024 – May 28, 2025. Data are subject to change. Last updated on 05/30/2025. This data is the accumulation of cases reported to CDC, USDA, CDFA, CDPH, CDFW, and the County of San Diego. Poultry flocks and dairy herds list test/detection date, unknown sample collection date. Wild birds and other species list sample collection date.

**Figure 1. H5N1 Detections in California, January 1, 2024 – May 28, 2025**



**Figure 2. Wild Bird and Mammal Highly Pathogenic Avian Influenza (HPAI) Detections in California, January 1, 2024 – May 28, 2025**



## Resources

- [H5N1 Bird Flu Surveillance and Human Monitoring | CDC](#)

## Select Zoonotic Diseases Detected in Animals in San Diego County

Figure 3. Select Zoonotic Diseases Detected in Animals in San Diego County reported by IDEXX, January 1, 2025 – April 30, 2025

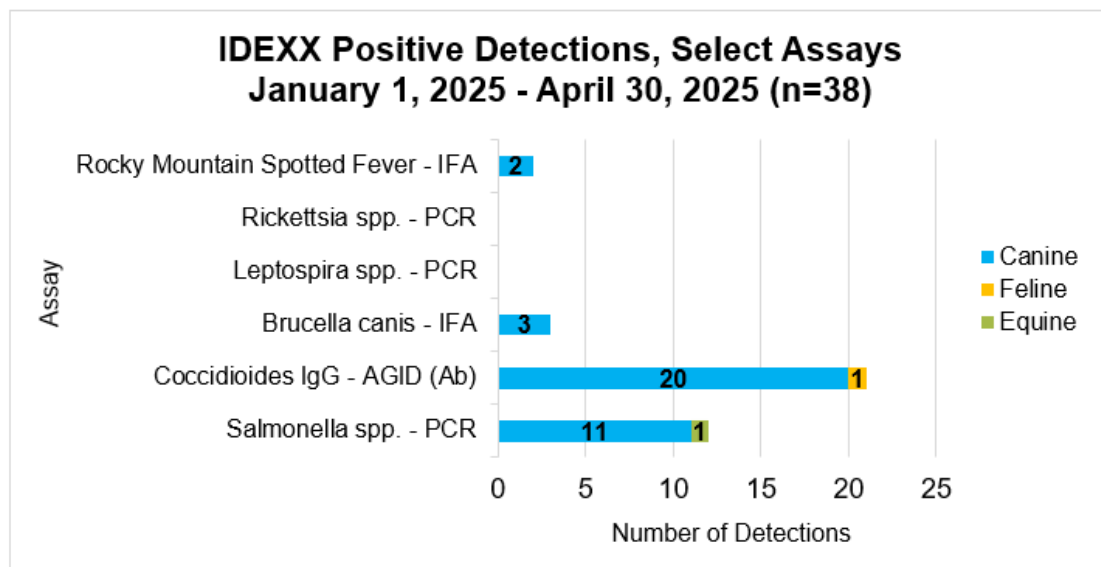


Table 2. Rabies Cases Detected by the San Diego County Public Health Laboratory, January 1, 2025 – May 15, 2025

Animal Type	Negative (n)	Positive (n)	Total (n)
Bat	20	4	24
Bobcat	1	0	1
Cat	53	0	53
Coyote	1	0	1
Dog	113	0	113
Fox	1	0	1
Goat	1	0	1
Raccoon	8	0	8
Skunk	13	0	13
Squirrel	1	0	1
Total (n)	212	4	216

**Table 3. Animal Influenza A Results, July 2024 - May 2025**

Species	2024 <sup>1</sup>		2025 <sup>2</sup>	
	Detected (n)	Not Detected (n)	Detected (n)	Not Detected (n)
Bat	0	26	0	18
Bird	15	158	3	197
Bobcat	0	0	0	1
Coyote	0	7	0	2
Cat	0	9	0	52
Fox	0	6	0	2
Goat	-	-	0	1
Mountain Lion	0	1	0	0
Opossum	0	18	0	1
Rabbit	0	1	0	0
Raccoon	0	11	0	18
Rat	0	1	0	0
Skunk	0	8	1	14
Squirrel	0	3	0	1
Weasel	0	1	0	1
<b>Total (n)</b>	<b>15</b>	<b>250</b>	<b>4</b>	<b>308</b>

<sup>1</sup> Test results from 07/23/24 – 12/31/24.

<sup>2</sup> Test results from 01/01/25 – 05/11/25.

For more information on these or other diseases of interest, please contact the One Health Epidemiology Program at [phe.ohep.hhsa@sdcounty.ca.gov](mailto:phe.ohep.hhsa@sdcounty.ca.gov).

## Announcements

**World Migratory Bird Day was Celebrated on May 10, 2025**



Saturday May 10, 2025, was World Migratory Bird Day, marking the start of migration as birds travel to nesting sites around the world. This United Nations holiday is also celebrated on October 11, 2025, marking the end of this journey as migratory birds return to winter regions.

Annual migration is a perilous mission involving environmental and human threats as birds cross regions. Their distribution spans cities and countries that differ in their approach to conservation, environmental protection, and public health. The annual campaign from May to October highlights migratory bird conservation and [sparks action](#) in local communities.

---

## June is National Camping Month



June is national camping month! Always protect yourself from [mosquitoes](#) and [ticks](#) while exploring the great outdoors. Don't forget to [protect your pets from ticks](#) too!

---

## World Zoonoses Day is Celebrated on July 6, 2025





World Zoonoses Day is Sunday July 6, 2025. “Zoon” means animal and “nosos” means disease. This day brings awareness to illnesses that can spread between animals and humans. It also commemorates the day that Louis Pasteur developed the first rabies vaccine to treat a human bite victim on July 6, 1885. It is estimated that 75% of emerging infectious diseases in humans come from animals.

---

## **The New San Diego County Public Health Laboratory Building**



The new San Diego County Public Health Laboratory (PHL) building is complete, and the team is transitioning over to the new space. The Rabies and One Health lab spaces have completed their moves, and all submissions should now go to Specimen Receiving at the new 5540 building. There is a small parking lot on the east side of the lab for submitters to use. Additional information that includes all updated rabies test requisition forms and instructions can be found on the [County PHL website](#).

We look forward to seeing you at the new lab!

---

**Join us at the 14th Annual Vector-Borne and Zoonotic Disease Meeting**



## Event Information

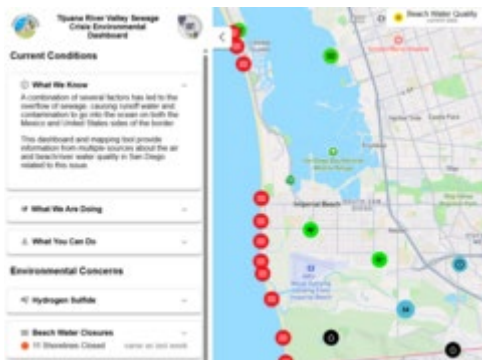
- **When:** Wednesday, June 18, 2025, from 8:30 AM - 12:30 PM.
- **Where:** Chambers Room at 5520 Overland Avenue, San Diego, CA 92123.
- Registered nurses, veterinarians, and vector control technicians are eligible to receive continuing education contact hours (hours pending).
- Light refreshments and snacks will be provided.

If you plan to attend, please [RSVP](#). Include your RN# if you would like to obtain Continuing Education Units.

RSVP Today

## County Resources

### County Resources to Check Out



- [Data and Reports](#)
- [Tijuana River Valley Sewage Crisis Environmental Dashboard](#)

## How to Contact Us

For more information, contact the San Diego One Health Epidemiology Program through our [contact form](#), via e-mail at [pht.ohep.hhsa@sdcounty.ca.gov](mailto:phs.ohep.hhsa@sdcounty.ca.gov), or call the Epidemiology Unit at (619) 692-8499.

We want to know if you are seeing any unusual, new, or emerging animal disease or outbreak. We can provide consultation, help investigate these diseases, and provide resources. Keeping us informed helps us protect our human and animal community.

Sign up for our One Health Epidemiology Network Updates

---

## Community Highlights

---

### How to get Featured in the OHEP Newsletter

We would love to feature your work in our newsletter! Please send photos, videos, and short descriptions to [phs.ohep.hhsa@sdcounty.ca.gov](mailto:phs.ohep.hhsa@sdcounty.ca.gov) so we can highlight the work you do around the County.

---

### Thank you!

If you have any questions about the content of this newsletter or the One Health Epidemiology Program, please email [phs.ohep.hhsa@sdcounty.ca.gov](mailto:phs.ohep.hhsa@sdcounty.ca.gov).



*The Public Health Services department, County of San Diego Health and Human Services Agency, has maintained national public health accreditation, since May 17, 2016, and was re-accredited by the Public Health Accreditation Board on August 21, 2023.*