



LIVE WELL
SAN DIEGO

San Diego County Respiratory Virus Surveillance Report

Prepared by Epidemiology and Immunization Services Branch

www.sdepi.org

May 2, 2024

COVID-19

Cases
44,126

Deaths
318

Outbreaks*
436

7/2/2023 – 4/27/2024

Influenza

Cases
17,792

Deaths
55

Outbreaks*
29

7/2/2023 – 4/27/2024

RSV

Cases
5,823

Deaths
22

Outbreaks*
10

7/2/2023 – 4/27/2024

*In residential congregate settings

Report Content Links

- Page 2: [COVID-19, Influenza, and RSV Fiscal Year-to-Date Overview](#)
- Page 3: [COVID-19, Influenza, and RSV Cases by Episode Week, Fiscal Year-to-Date](#)
- Page 4: [Cumulative COVID-19, Influenza, and RSV Cases](#)
- Page 5: [COVID-19 and Influenza Hospital and ICU Census](#)
- Page 6: [Emergency Department Data: Respiratory Symptoms](#)
- Page 7: [Proportion of Cases by Age Group and Episode Month, Fiscal Year-to-Date](#)
- Page 8: [Proportion of Cases by Age Group and Fiscal Year](#)
- Page 9: [COVID-19, Influenza, and RSV Positivity and Outbreaks](#)
- Page 10: [COVID-19, Influenza, and RSV Deaths by Age and Fiscal Year](#)
- Page 11: [Summary of Deaths, Fiscal Year-to-Date](#)
- Page 12: [Vaccinations Administered](#)
- Page 13: [Vaccine Recipients by Age](#)
- Page 14: [Wastewater Surveillance](#)
- Page 15: [Influenza Subtypes](#)
- Page 16: [COVID-19 Surveillance on Variants](#)

Data are preliminary and may change due to delayed reporting and additional information obtained during investigations.

Most data in this report are presented by fiscal year, which runs July 1–June 30. Because data are also presented by CDC disease week, which runs Sunday–Saturday, we start the data for 2023–24 on July 2, 2023.

The purpose of the weekly **Respiratory Virus Surveillance Report** is to summarize current COVID-19, RSV, and influenza surveillance in San Diego County. Additional information on COVID-19, RSV, and influenza reporting, resources, data sources, and definitions can be found in the [Supplemental Information](#) document. A link to subscribe to this report are available via the Epidemiology Unit [website](#).

Please visit the COVID-19 data dashboards on the County of San Diego COVID-19 [website](#). Additional COVID-19 data are available there in a more interactive format.

Epidemiology and Immunization Services Branch

www.sdepi.org

(619) 692-8499



Respiratory Virus Surveillance Report

Data through 4/27/2024



LIVE WELL
SAN DIEGO

COVID-19, Influenza, and RSV Fiscal Year-to-Date Overview

Table 1. Respiratory Surveillance Indicators

Indicator	2023-24 Fiscal Year				2022-23 Fiscal Year				Prior Years Average*		
	Week 17	Total To Date	Week 16		Week 17	Total To Date	FY Total		Week 17	Total To Date	FY Total
% P&I deaths [†]	5%		4%		6%				7%		
CASES											
COVID-19 [‡]	188	44,126	225		758	172,480	177,411		2,032	319,023	352,292
Influenza	99	17,792	142		41	21,371	21,711		60	10,991	11,426
RSV	13	5,823	13		13	5,827	5,885		10	2,671	2,749
DEATHS [§]											
COVID-19	2	318	2		2	585	630		6	1,838	1,889
Influenza	0	55	1		0	43	44		0	45	48
RSV	0	22	0		0	21	21		0	8	8
HOSPITALIZATIONS [¶]											
COVID-19	27	5,709	39		109	11,115	11,696		101		
Influenza	13	1,570	10		3	1,542	1,588		5		
OUTBREAKS [#]											
COVID-19	1	436	1		1	459	500		4	450	514
Influenza	0	29	0		0	25	25		0	22	22
RSV	0	10	0		0	2	2		0	1	1
SYNDROMIC SURVEILLANCE											
% ED CLI**	1%		2%		2%				2%		
% ED ILI ^{††}	3%		3%		3%				3%		
% Resp General	13%		15%		14%				13%		

FY 2023-24 is 7/2/2023- 6/29/2024, Weeks 27-26. Previous weeks' case counts or percentages may change due to delayed processing or reporting.

*Includes FYs 2018-19, 2019-20, 2020-21, 2021-22, and 2022-23 for influenza and 2020-21, 2021-22, and 2022-23 for COVID-19 and RSV.

†The percentage of deaths registered with pneumonia or influenza listed as a cause of death.

‡Confirmed and probable COVID-19 cases.

§Current FY deaths are shown by week of report; prior FY deaths are shown by week of death.

¶The number of patients admitted to an inpatient bed who had laboratory-confirmed COVID-19 or laboratory-confirmed influenza virus infection at the time of admission. COVID-19 admissions data are available starting August 2020, while influenza admissions data are available starting November 2020. As a result, totals to date and FY totals for prior years average are unavailable. Starting 11/2/2023, these data are based on new hospital admissions and reflect a change from the census data shown in previous reports. Census data can be found on page 5 of this report and on our [COVID Highlights dashboard](#).

#See the [Supplemental Information](#) document for outbreak definitions. Includes only outbreaks occurring in skilled nursing facilities and other residential congregate settings.

**COVID-like Illness (CLI) includes fever and cough, shortness of breath, or difficulty breathing OR coronavirus diagnostic codes.

†† Influenza-like illness (ILI) includes fever plus cough and/or sore throat.

Epidemiology and Immunization Services Branch

www.sdepi.org

(619) 692-8499



Respiratory Virus Surveillance Report



COVID-19, Influenza, and RSV Cases by CDC Episode Week,* 2023-24 Fiscal Year-to-Date

Figure 1.1. San Diego County **COVID-19** Confirmed and Probable Cases

(N=44,126)

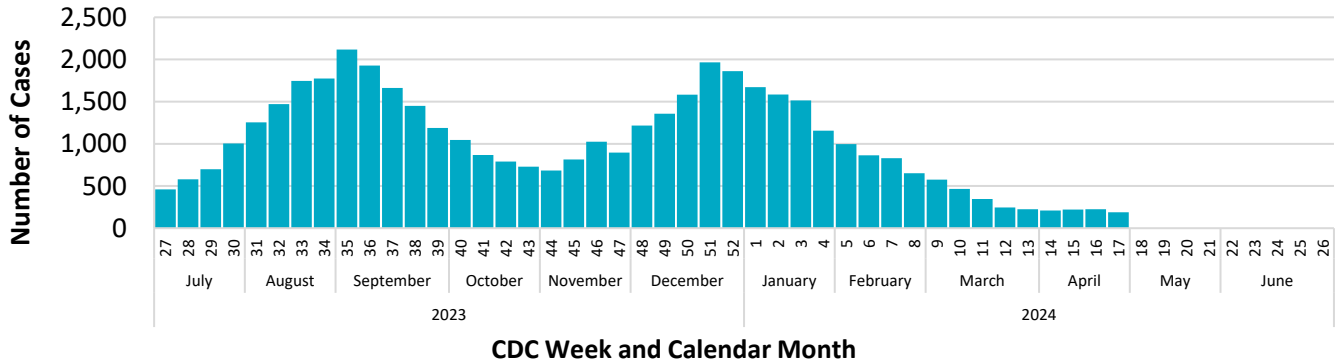


Figure 1.2. San Diego County **Influenza** Cases

(N=17,792)

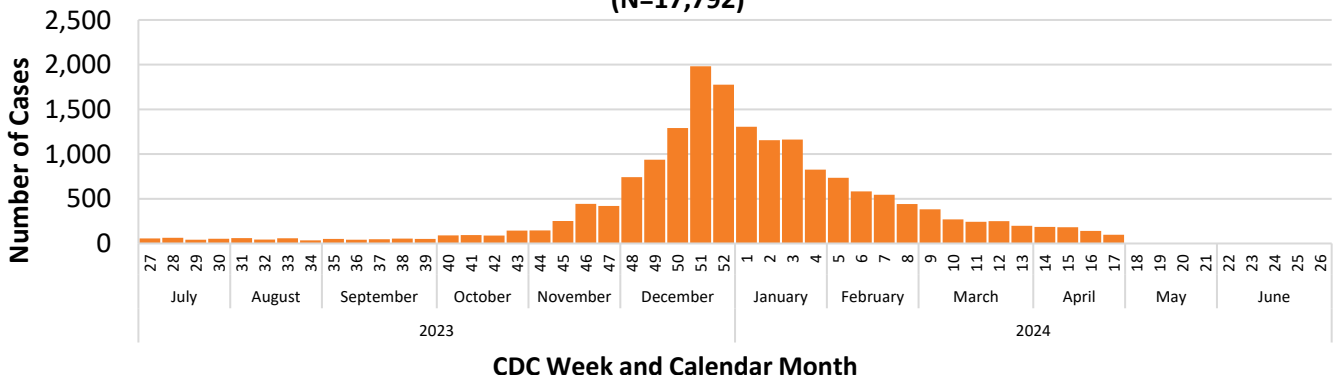
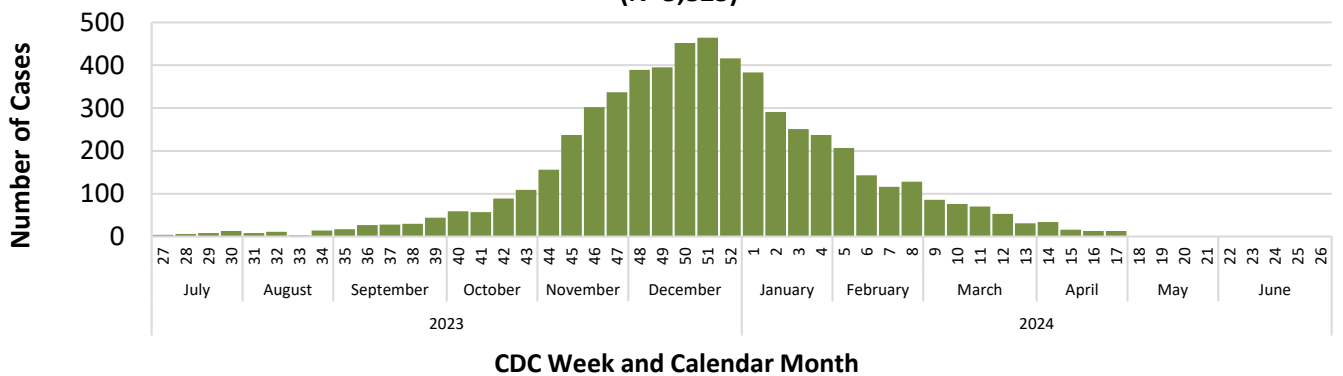


Figure 1.3. San Diego County **RSV** Cases

(N=5,823)



*Episode date is the earliest available of symptom onset date, specimen collection date, date of death, date reported. Data for the most recent week may be incomplete.

Data through
4/27/2024

Epidemiology and Immunization Services Branch
www.sdepi.org (619) 692-8499



Respiratory Virus Surveillance Report



Cumulative COVID-19, Influenza, and RSV Cases by CDC Episode Week* and Fiscal Year

— 2023-24 — 2022-23 — 2021-22 — 2020-21 — 2019-20

Figure 2.1. Cumulative COVID-19 Confirmed and Probable Cases

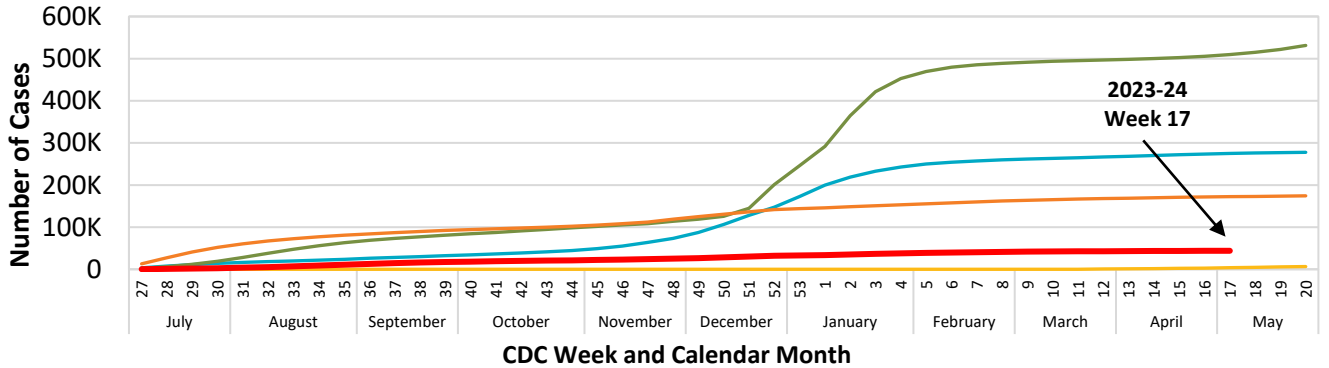


Figure 2.2. Cumulative Influenza Cases

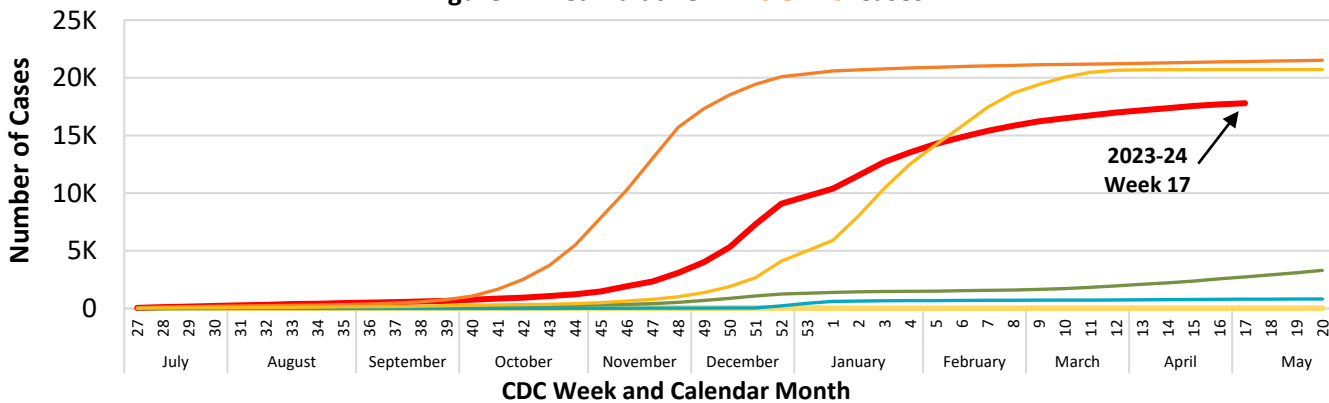
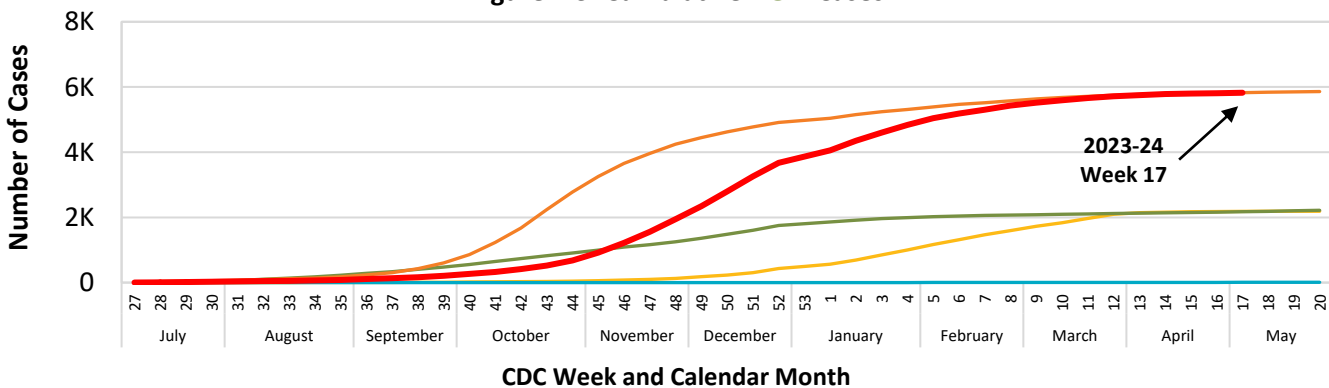


Figure 2.3. Cumulative RSV Cases



*Episode date is the earliest available of symptom onset date, specimen collection date, date of death, date reported. Data for the most recent week may be incomplete.

Data through
4/27/2024

Epidemiology and Immunization Services Branch
www.sdepi.org (619) 692-8499



COVID-19 and Influenza Hospital and ICU Census

Figure 3. COVID-19 and Influenza-Positive Hospitalized Patients, Weekly Average Census*, San Diego County

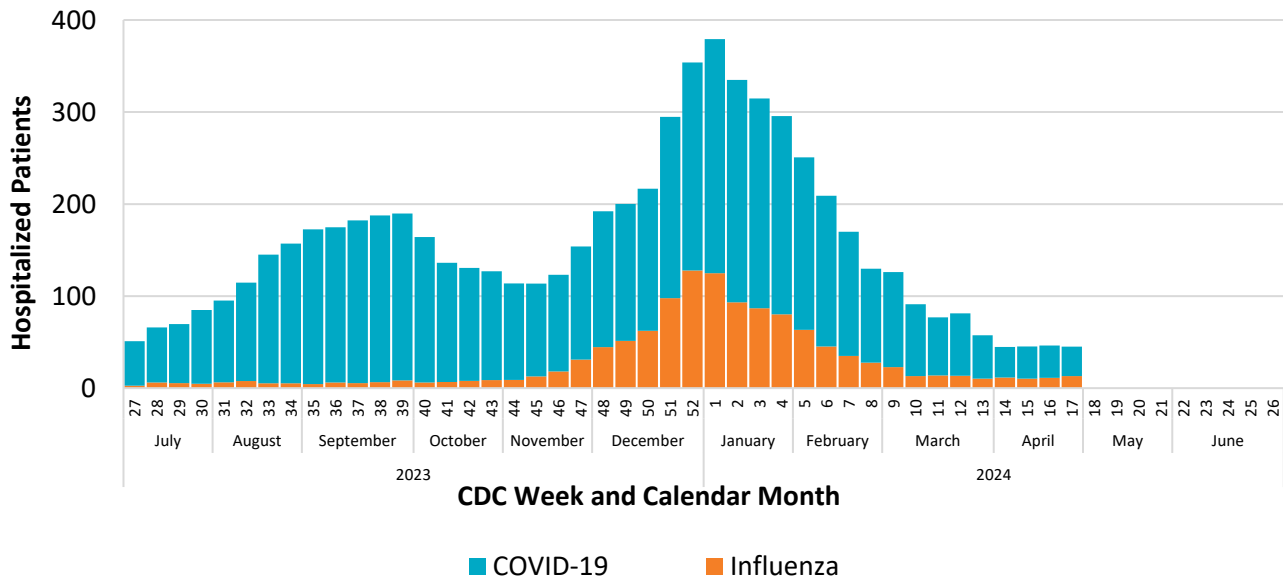
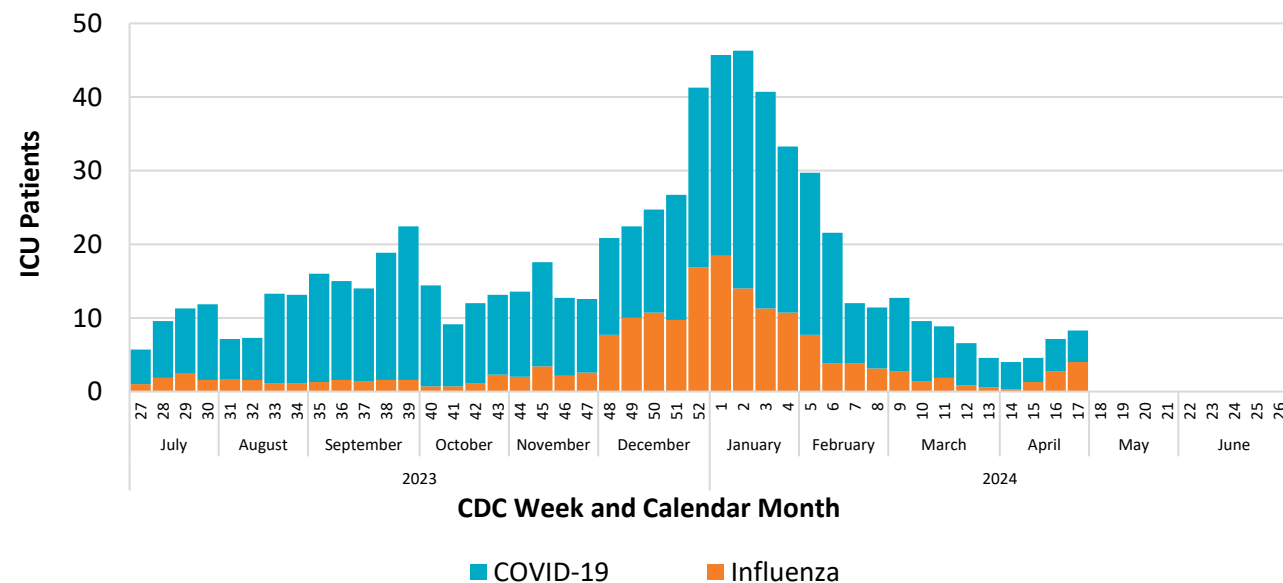


Figure 4. COVID-19 and Influenza-Positive ICU Patients, Weekly Average Census*, San Diego County



*Calculated by taking the 7-day daily average census for the week.

Data through
4/27/2024

Epidemiology and Immunization Services Branch
www.sdepi.org (619) 692-8499

Respiratory Virus Surveillance Report



Emergency Department Data: Respiratory Symptoms

Figure 5. Percent of Emergency Department Visit Chief Complaints for ILI[†], Respiratory Symptoms, or COVID-like Illness* by Week

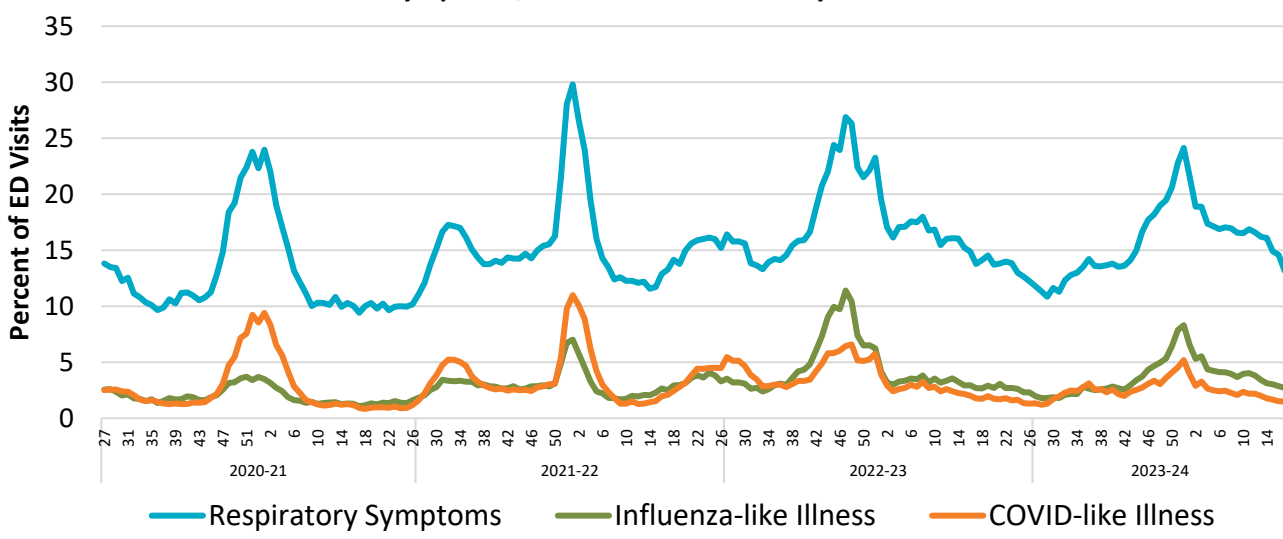
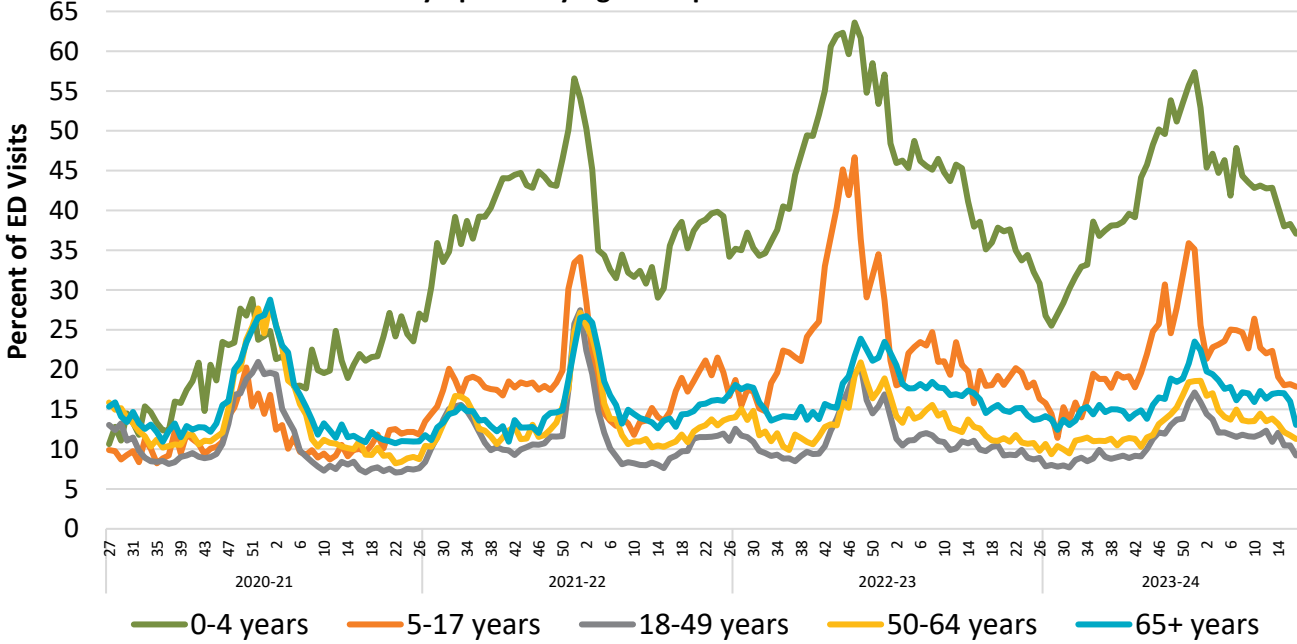


Figure 6. Percent of Emergency Department Visit Chief Complaints for Respiratory Symptoms by Age Group and Week



*COVID-like Illness (CLI) includes fever and cough, shortness of breath, or difficulty breathing OR coronavirus diagnostic codes.
†Influenza-like illness (ILI) includes fever plus cough and/or sore throat.

Data through
4/27/2024

Epidemiology and Immunization Services Branch
www.sdepi.org (619) 692-8499



Respiratory Virus Surveillance Report



Proportion of Cases by Age Group and Episode Month, 2023-24 Fiscal Year-to-Date

■ 0-4 yrs ■ 5-17 yrs ■ 18-49 yrs ■ 50-64 yrs ■ 65+ yrs

Figure 7. Proportion of **COVID-19** Cases

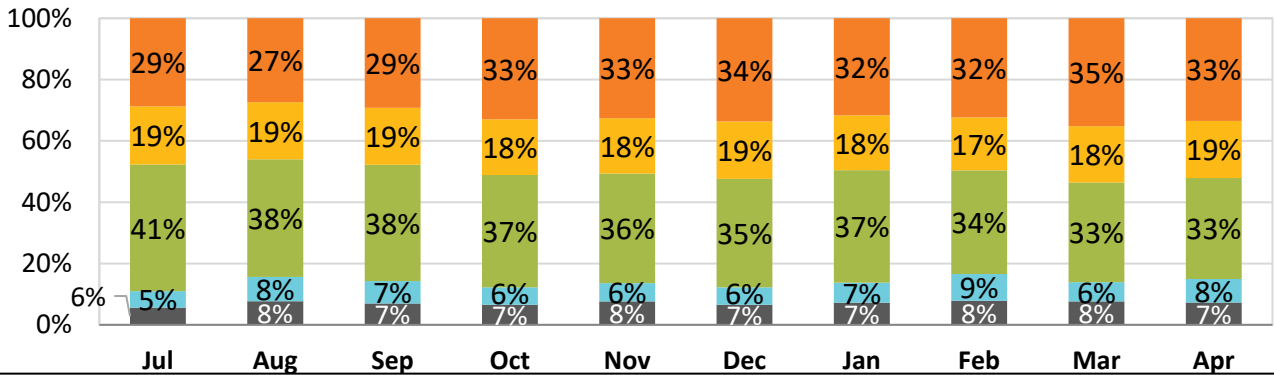


Figure 8. Proportion of **Influenza** Cases

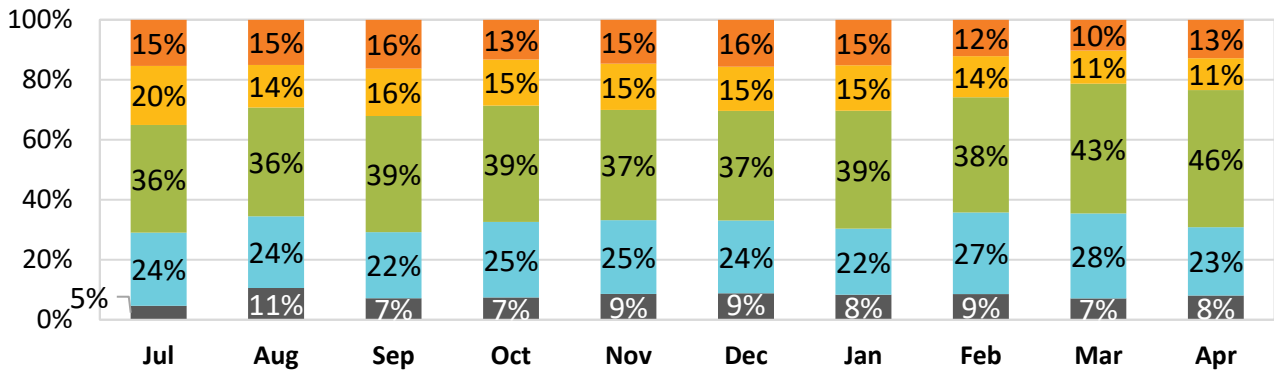
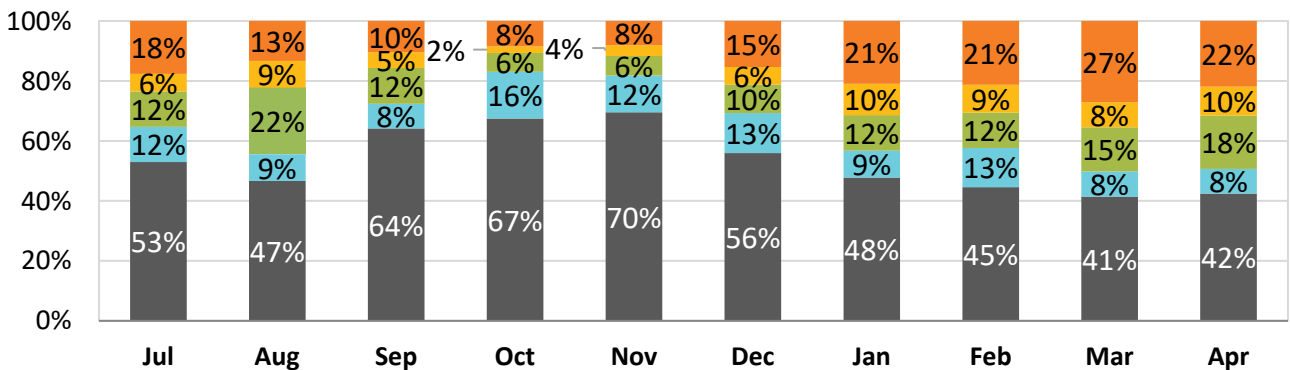


Figure 9. Proportion of **RSV** Cases



Episode date is the earliest available of symptom onset date, specimen collection date, date of death, date reported. Date admitted is not known for all hospitalizations; information may be updated as case investigations proceed.

Data through
4/27/2024

Epidemiology and Immunization Services Branch
www.sdepi.org (619) 692-8499



Respiratory Virus Surveillance Report



Proportion of Cases by Age Group and Fiscal Year

■ 0-4 yrs ■ 5-17 yrs ■ 18-49 yrs ■ 50-64 yrs ■ 65+ yrs

Figure 10. Proportion of COVID-19 Cases by Age Group and Fiscal Year

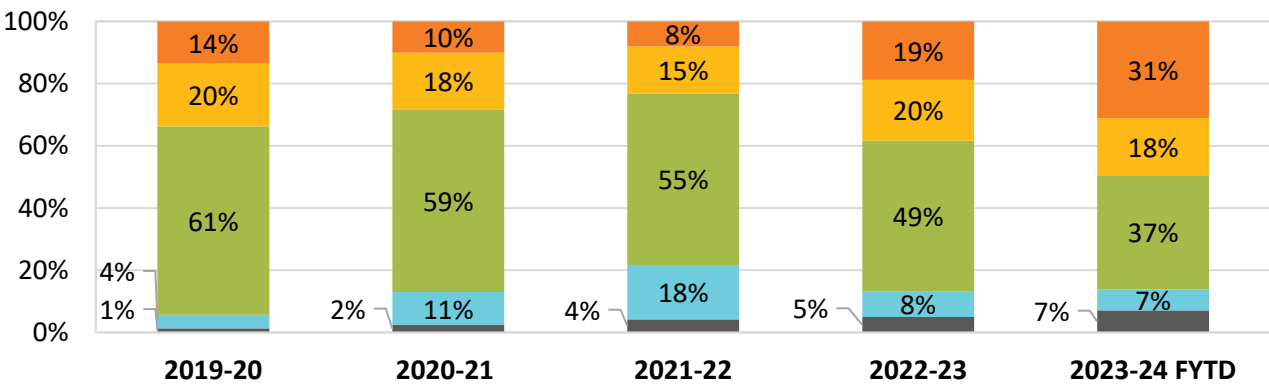


Figure 11. Proportion of Influenza Cases by Age Group and Fiscal Year

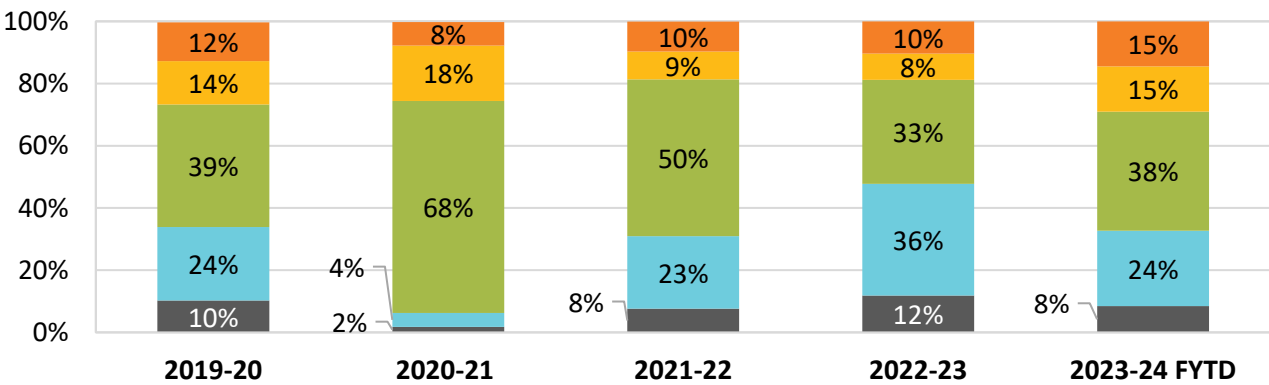
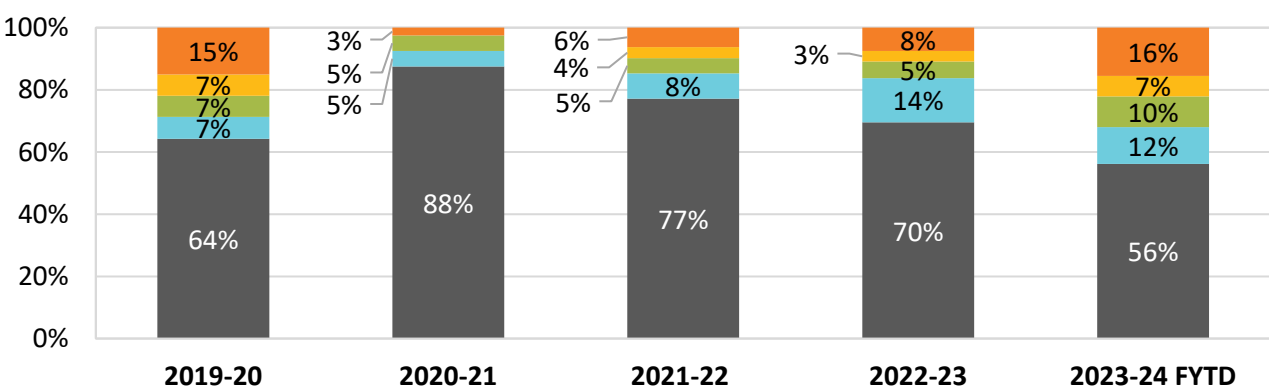


Figure 12. Proportion of RSV Cases by Age Group and Fiscal Year

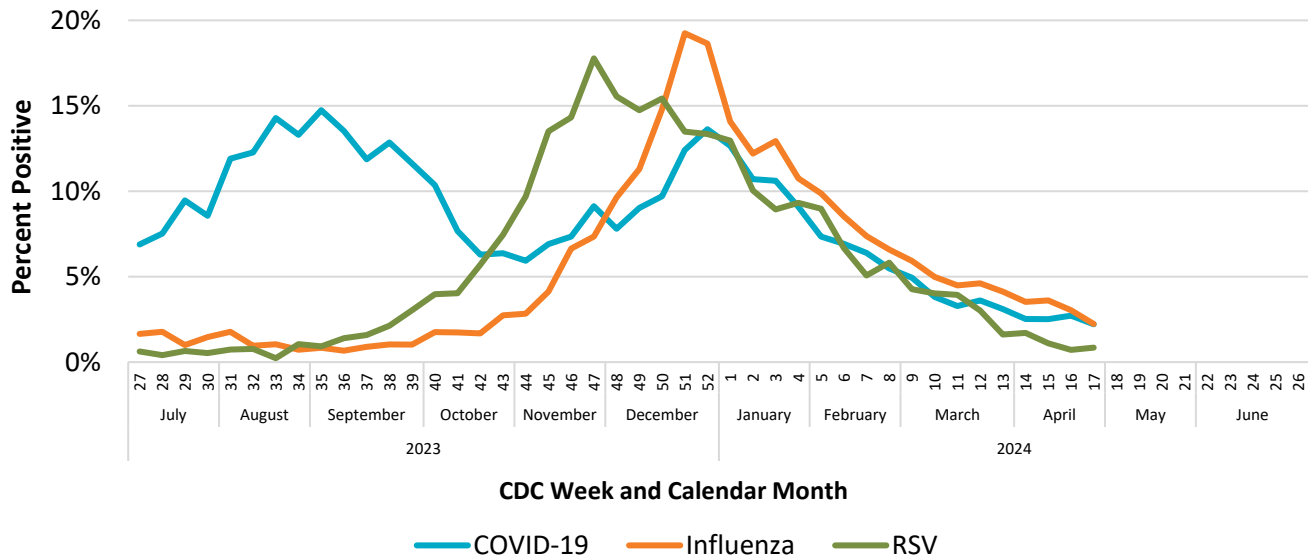


Respiratory Virus Surveillance Report



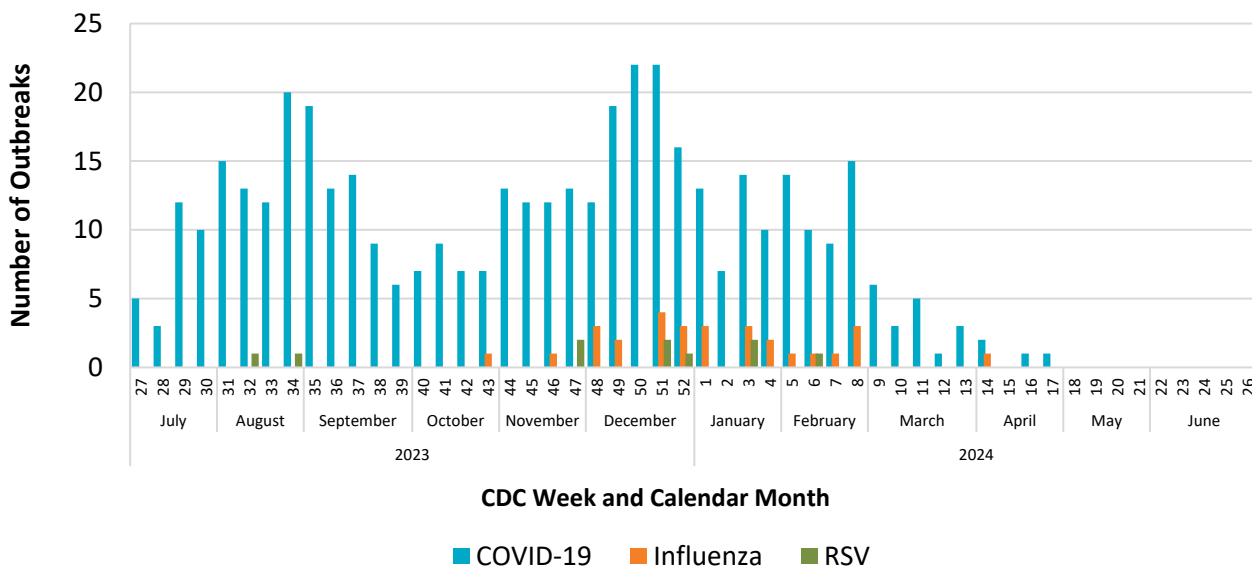
COVID-19, Influenza, and RSV Positivity

Figure 13. COVID-19, Influenza, and RSV Positivity
by Week of Specimen Collection



COVID-19, Influenza, and RSV Outbreaks in Residential Congregate Settings*

Figure 14. COVID-19, Influenza, and RSV Outbreaks by Week of Onset



*Includes skilled nursing facilities, assisted living facilities, group homes, correctional facilities, homeless shelters.



Respiratory Virus Surveillance Report



COVID-19, Influenza, and RSV Deaths by Age and Fiscal Year

0-4 yrs 5-17 yrs 18-49 yrs 50-64 yrs 65+ yrs

Figure 15. COVID-19 Deaths by Age and Fiscal Year

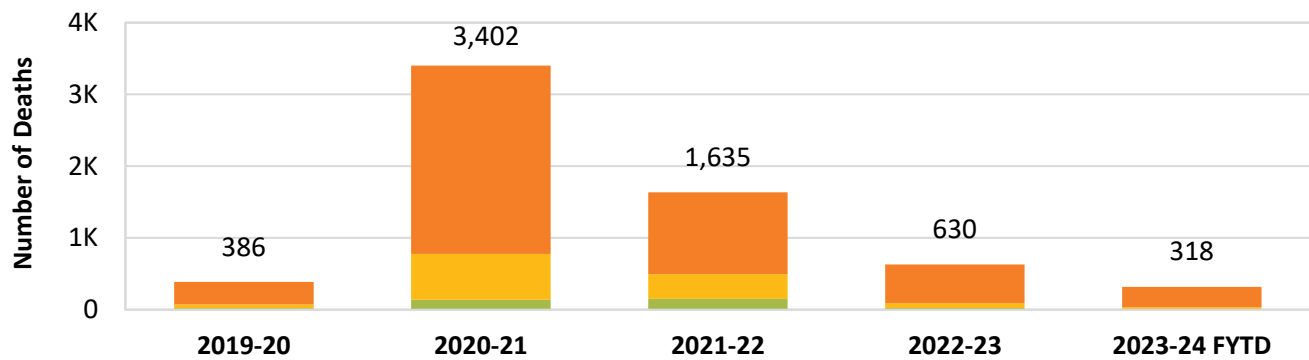


Figure 16. Influenza Deaths by Age and Fiscal Year

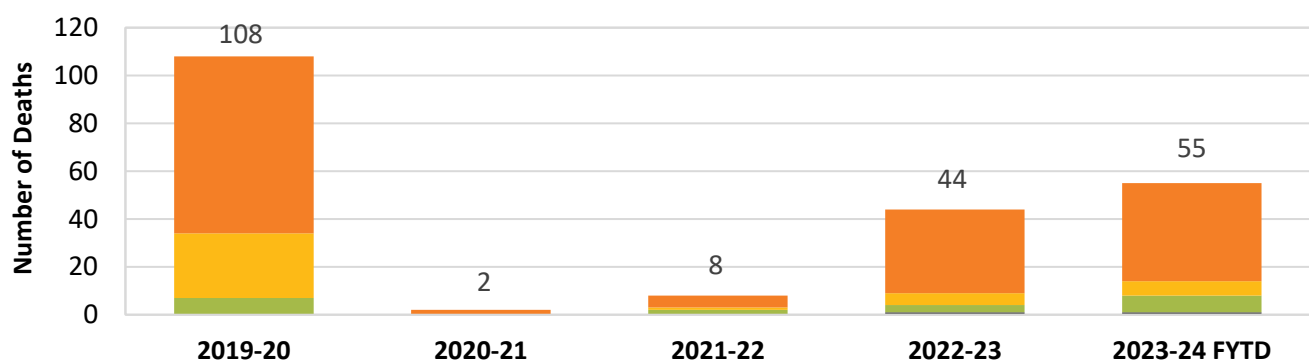
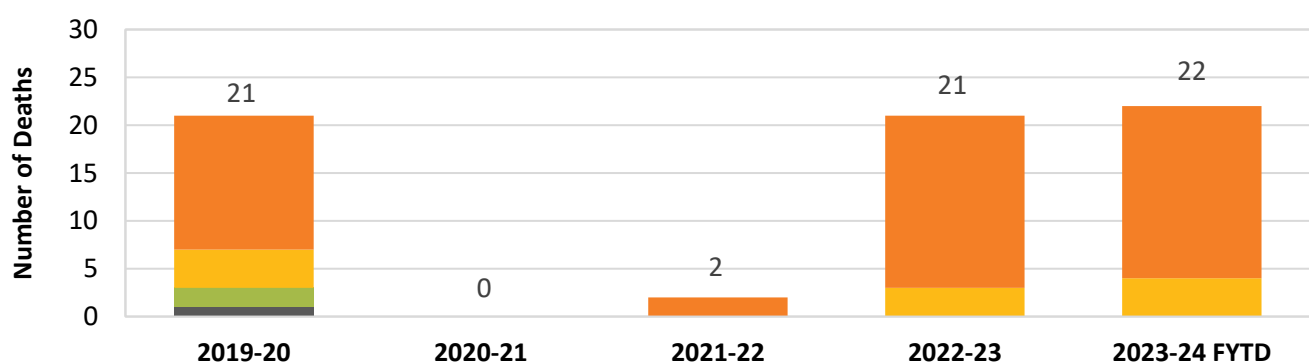


Figure 17. RSV Deaths by Age and Fiscal Year



Respiratory Virus Surveillance Report

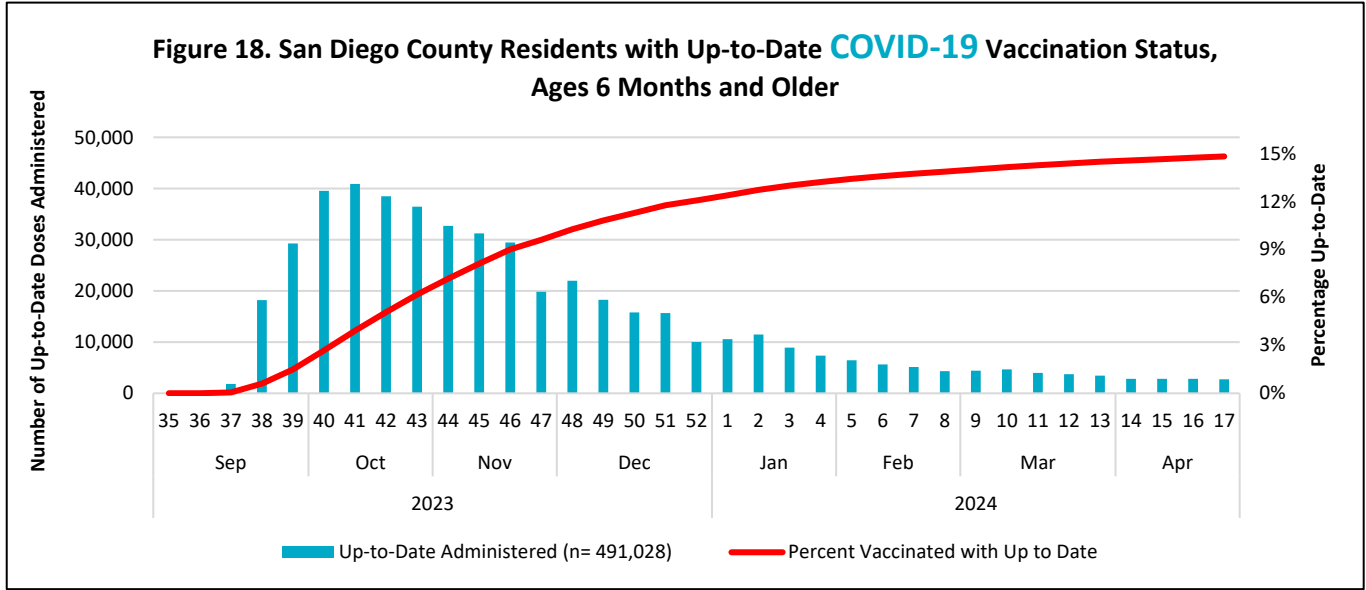


Table 2. Summary of Deaths, Fiscal Year-to-Date

	COVID-19 Deaths	Influenza Deaths	RSV Deaths
Age			
0-4 years	0 (0.0%)	1 (1.8%)	0 (0.0%)
5-17 years	0 (0.0%)	0 (0.0%)	0 (0.0%)
18-49 years	8 (2.5%)	7 (12.7%)	0 (0.0%)
50-64 years	26 (8.2%)	6 (10.9%)	4 (18.2%)
65+ years	284 (89.3%)	41 (74.6%)	18 (81.8%)
Gender			
Male	187 (58.8%)	29 (52.7%)	9 (40.9%)
Female	131 (41.2%)	26 (47.3%)	13 (59.1%)
Race/Ethnicity			
American Indian or Alaska Native	3 (0.9%)	1 (1.8%)	0 (0.0%)
Asian	30 (9.4%)	12 (21.8%)	5 (22.7%)
Black or African American	7 (2.2%)	1 (1.8%)	1 (4.6%)
Hispanic or Latino	54 (17.0%)	16 (29.1%)	7 (31.8%)
Native Hawaiian or Other Pacific Islander	0 (0.0%)	0 (0.0%)	0 (0.0%)
Other/Multiple Race	6 (1.9%)	1 (1.8%)	0 (0.0%)
White	218 (68.6%)	24 (43.6%)	9 (40.9%)
Other Significant Conditions	238 (74.8%)	47 (85.5%)	17 (77.3%)

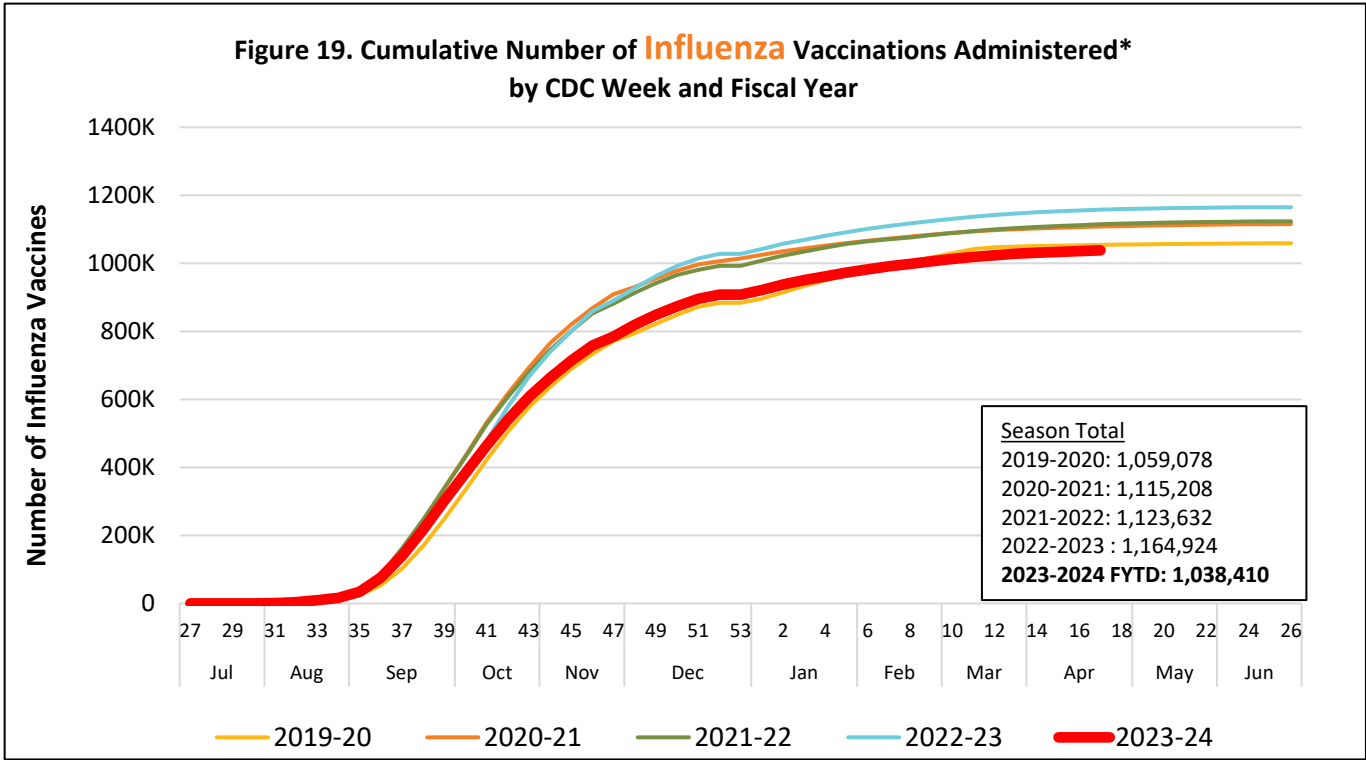
Vaccinations Administered

Figure 18. San Diego County Residents with Up-to-Date COVID-19 Vaccination Status, Ages 6 Months and Older



The line shows the percent of persons vaccinated as Up-to-Date (UTD) per the 2023/2024 guidelines. The bars show the number of UTD doses administered to San Diego County Residents. The 2023/2024 UTD guidelines per the CDC are that individuals who are at least 5 years of age and older should receive one dose of an updated COVID-19 vaccine and individuals 6 months to 4 years of age should receive multiple COVID-19 vaccines in addition to at least one dose of the updated COVID-19 vaccine. [Stay Up to Date with COVID-19 Vaccines | CDC](#)

Figure 19. Cumulative Number of Influenza Vaccinations Administered* by CDC Week and Fiscal Year

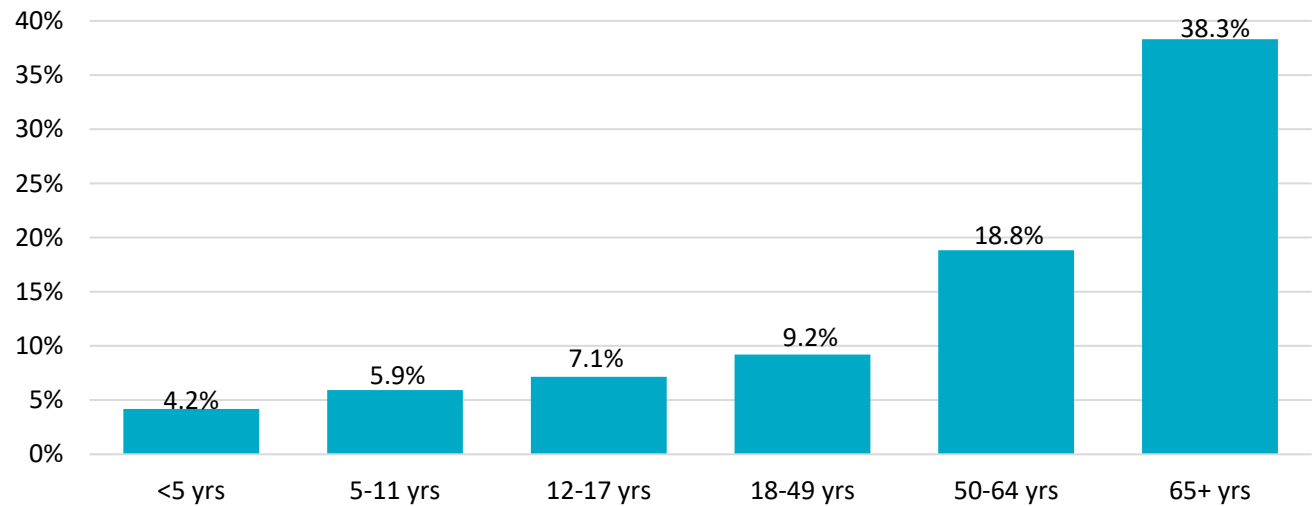


Season Total
2019-2020: 1,059,078
2020-2021: 1,115,208
2021-2022: 1,123,632
2022-2023 : 1,164,924
2023-2024 FYTD: 1,038,410

*Week 52 data are repeated for week 53 for years that do not include week 53.

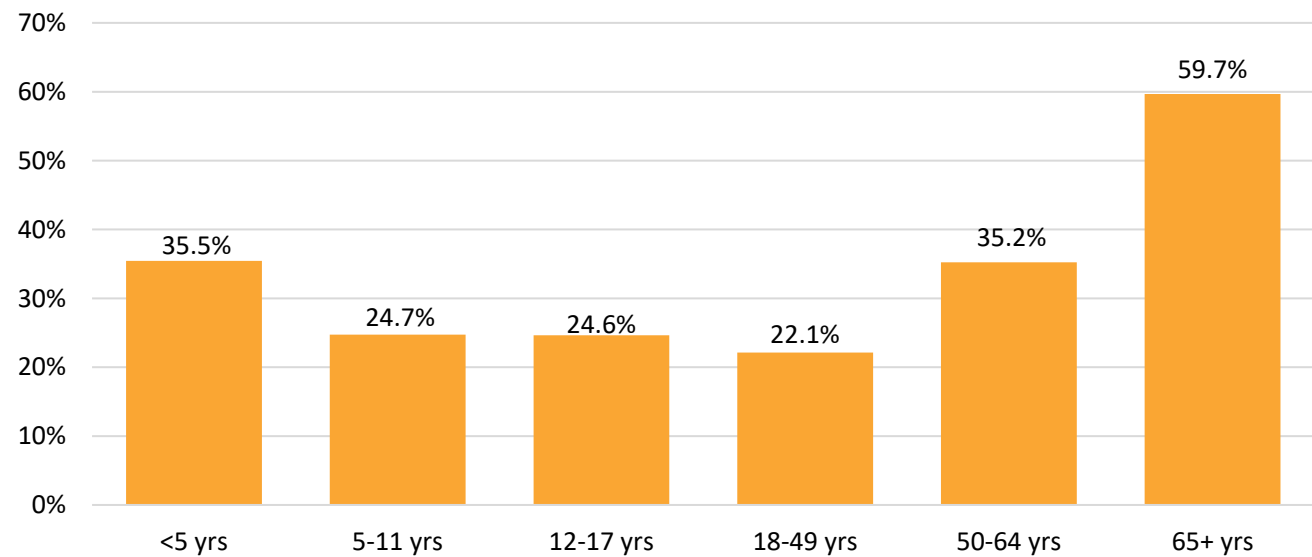
Vaccine Recipients by Age

Figure 20. Percentage of San Diego Resident Age Groups Up to Date*
on COVID-19 Vaccination



*Using the Up to Date (UTD) criteria per the 2023/2024 guidelines. [Stay Up to Date with COVID-19 Vaccines | CDC](#)

Figure 21. Percentage of San Diego Resident Age Groups that Received an Influenza
Vaccination, 2023-24 Fiscal Year-to-Date



Respiratory Virus Surveillance Report



Wastewater Surveillance

— Moving Average* ● Normalized daily level†

Figure 22. SARS-CoV-2 Detection in Wastewater

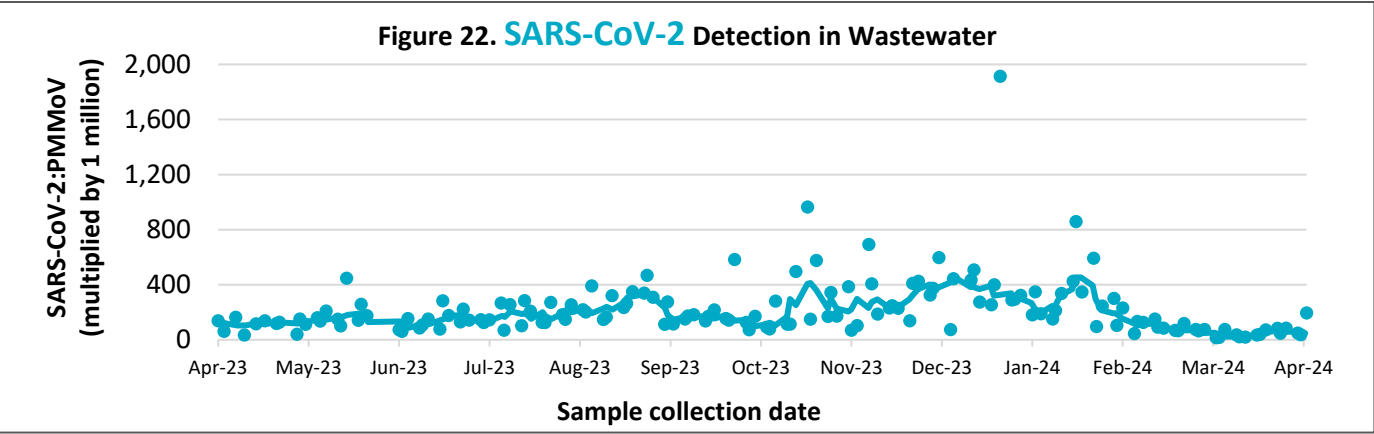


Figure 23. Influenza A‡ Detection in Wastewater

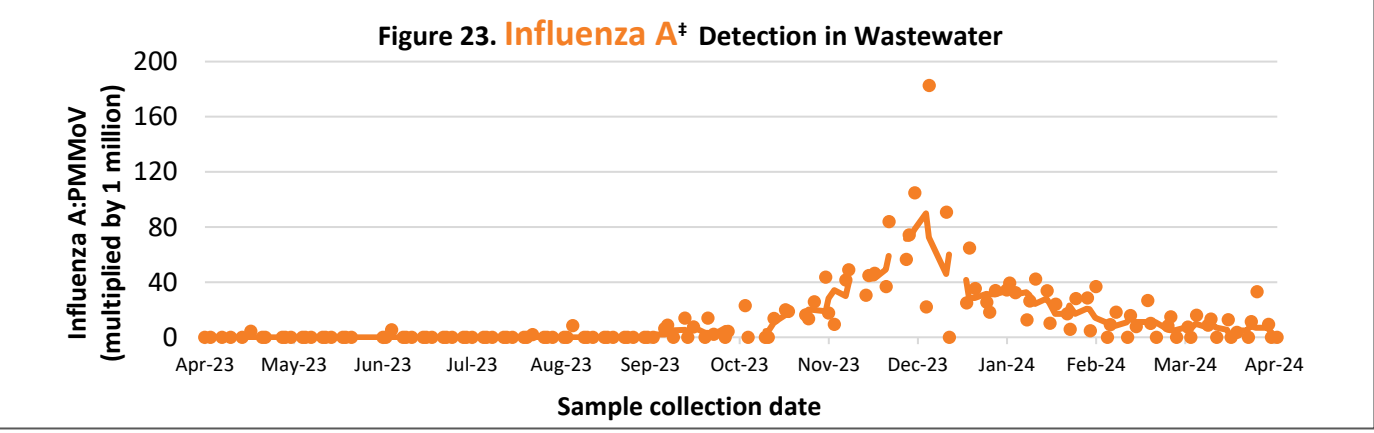
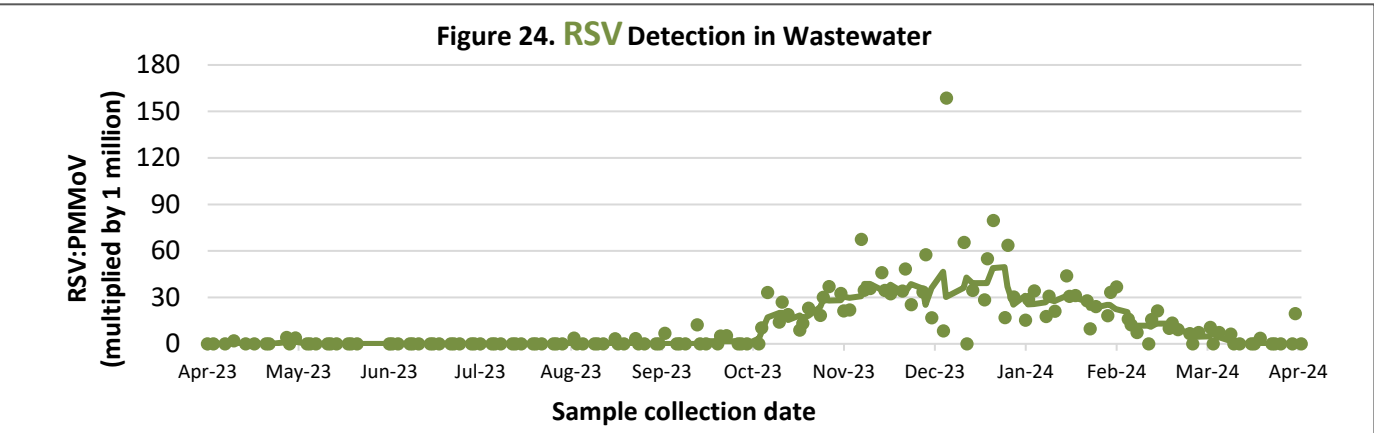


Figure 24. RSV Detection in Wastewater



Data provided by Wastewater SCAN: <https://wastewaterscan.org/>.

*Calculated by taking the average of the 5 samples centered around a date after excluding the highest and lowest values.

† Data are normalized to a common, harmless plant virus that is consumed when people eat called pepper mild mottle virus (PMMoV).

‡ Detection of influenza in wastewater is specific to influenza A.

Data through
4/27/2024

Epidemiology and Immunization Services Branch
www.sdepi.org (619) 692-8499



Influenza Subtypes

Figure 25. Influenza Subtypes by CDC Episode Week*

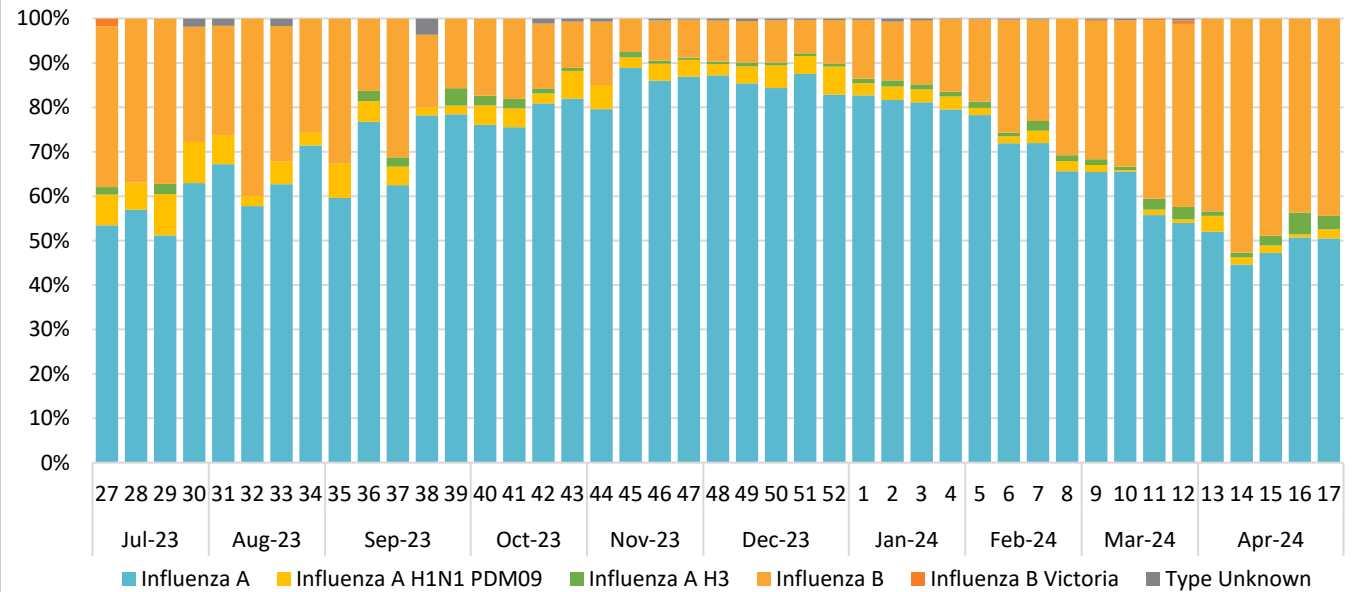
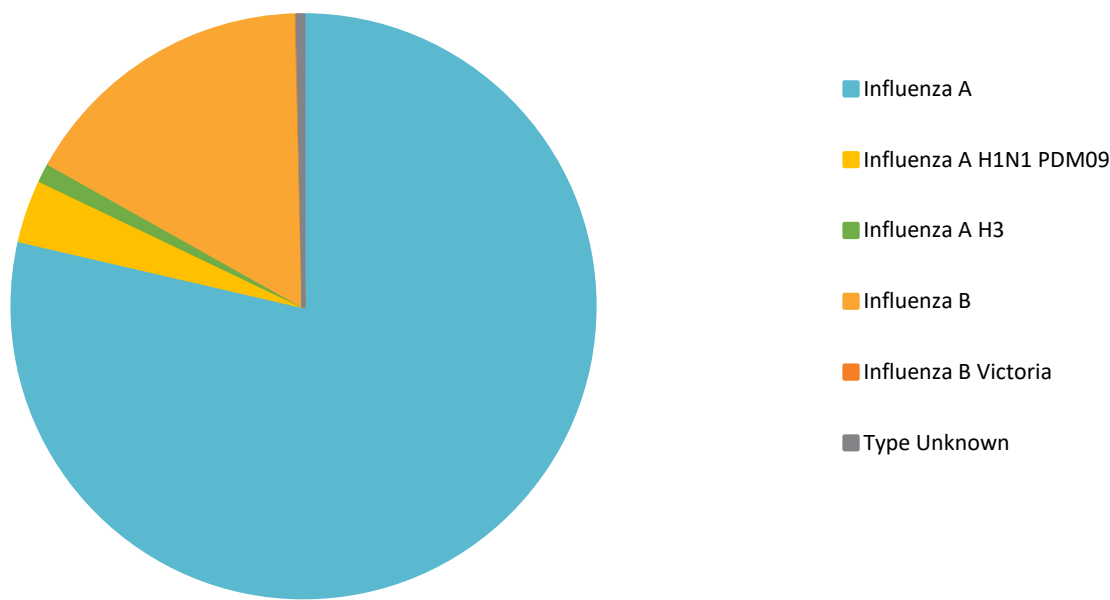


Figure 26. Influenza Subtypes, 2023-24 Fiscal Year-to-Date



*Episode date is the earliest available of symptom onset date, specimen collection date, date of death, date reported. Data for the most recent week may be incomplete.

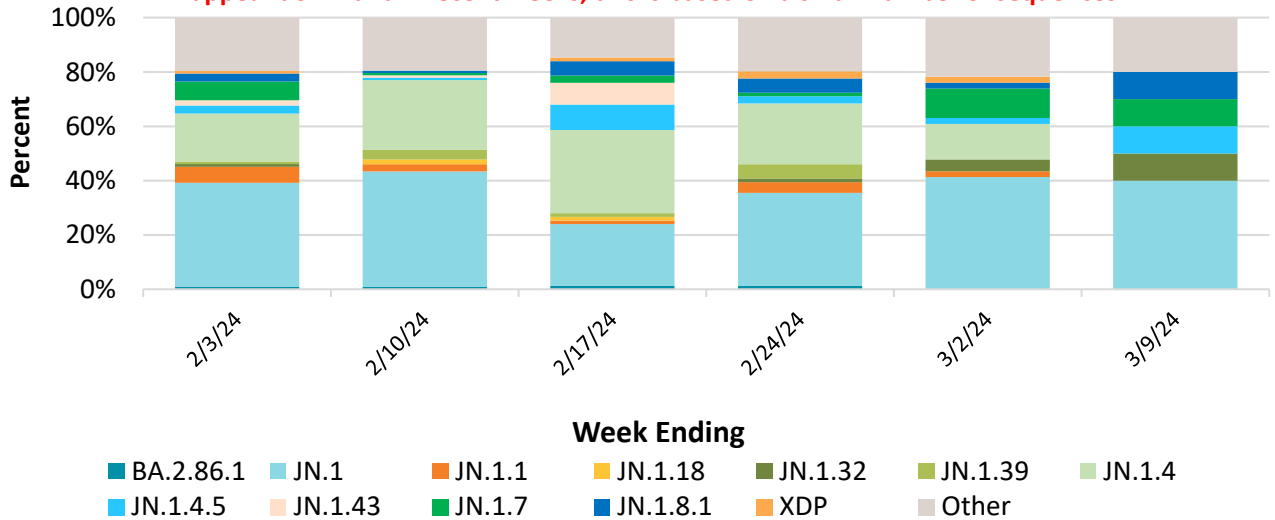
Respiratory Virus Surveillance Report



COVID-19 Surveillance on Variants

Figure 27. SARS-CoV-2 Variant Prevalence from Genomic Surveillance

Sequencing data in San Diego County is currently sparse. While some lineages may appear dominant in recent weeks, this is based on a small number of sequences.



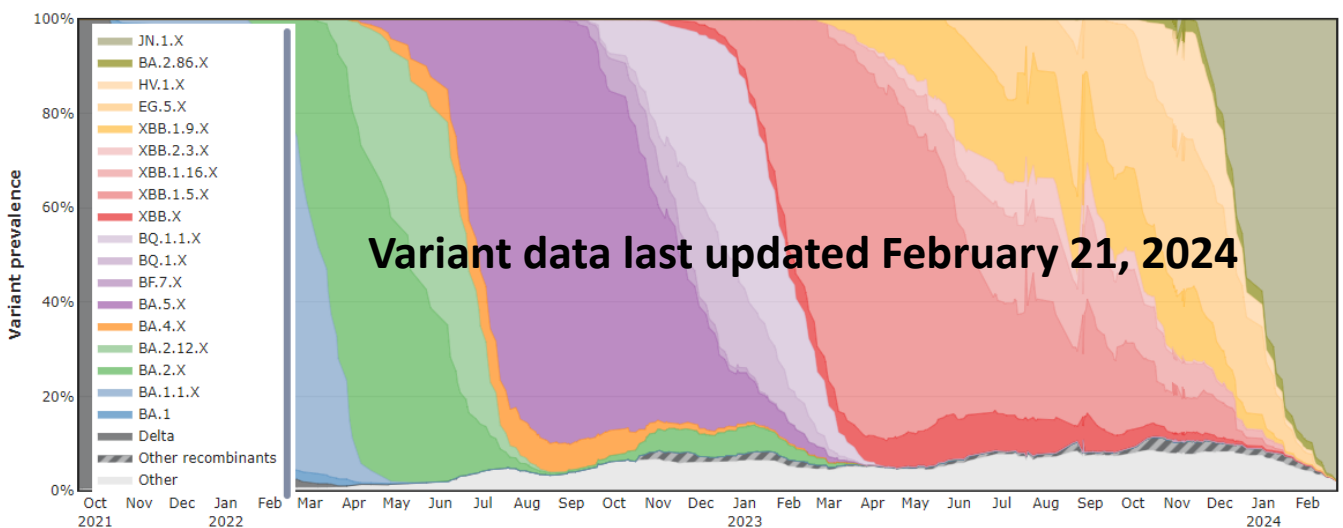
Variant calls for SARS-CoV-2 genomes generated from clinical samples were obtained from the CDPH COVIDNET dashboard and GISAID. Data was then filtered to only include samples from San Diego county within the past 3-months

(<https://testing.covid19.ca.gov/covidnet/>, <https://gisaid.org/>).

For some weeks, very limited specimens may have been tested and findings should be interpreted with caution.

Weeks with fewer than 5 specimens are not shown.

Figure 28. SARS-CoV-2 Wastewater Lineage Prevalence Over Time in San Diego



Source: SARS-CoV-2 variant prevalence in wastewater was generated by the SEARCH consortia

(<https://searchcovid.info/dashboards/wastewater-surveillance/>).

Data through
4/27/2024

Epidemiology and Immunization Services Branch

www.sdepi.org

(619) 692-8499

