



San Diego County Annual 2022-23 Respiratory Virus Surveillance Report

Prepared by Epidemiology and Immunization Services Branch

www.sdepi.org

September 1, 2023

COVID-19

Cases
156,475

Deaths
626

Outbreaks*
498

7/3/2022 – 7/1/2023

Influenza

Cases
21,711

Deaths
44

Outbreaks*
25

7/3/2022 – 7/1/2023

*In residential congregate settings

Report Content Links

- Page 2: [COVID-19 and Influenza Fiscal Year Overview](#)
- Page 3: [COVID-19 and Influenza Cases by Episode Week, Fiscal Year](#)
- Page 4: [Cumulative COVID-19 and Influenza Cases](#)
- Page 5: [COVID-19 Hospital and ICU Census](#)
- Page 6: [Emergency Department Data: COVID-like Illness and Influenza-like Illness](#)
- Page 7: [Monthly COVID-19 Cases, Hospitalizations, and Deaths by Age](#)
- Page 8: [Influenza Case Counts by Age](#)
- Page 9: [COVID-19 and Influenza Outbreaks and Co-Infections](#)
- Page 10: [COVID-19 and Influenza Deaths](#)
- Page 11: [Summary of Deaths, Fiscal Year](#)
- Page 12: [Vaccinations Administered](#)
- Page 13: [Wastewater Surveillance](#)
- Page 14: [COVID-19 Surveillance on Variants](#)
- Page 15: [Respiratory Syncytial Virus \(RSV\) Surveillance](#)

Data are preliminary and may change due to delayed reporting and additional information obtained during investigations.

Most data in this report are presented by fiscal year, which runs July 1–June 30. Because data are also presented by CDC disease week, which runs Sunday–Saturday, we start the data for FY2022-23 on July 3, 2022 and end date of July 1, 2023.

The purpose of the weekly *Respiratory Virus Surveillance Report* is to summarize current COVID-19, RSV, and influenza surveillance in San Diego County. A link to subscribe to this report is available via the Epidemiology Unit [website](#).

Please visit the COVID-19 data dashboards on the County of San Diego COVID-19 [website](#). Additional COVID-19 data are available there in a more interactive format.

Epidemiology and Immunization Services Branch

www.sdepi.org (619) 692-8499

Respiratory Virus Surveillance Report

Data through 7/1/2023



COVID-19 and Influenza Fiscal Year Overview

Figure 1.1. San Diego County COVID-19* Cases by Episode Month

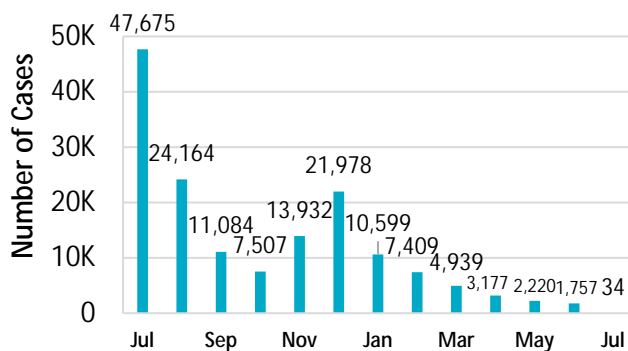


Figure 1.2. San Diego County Influenza Cases by Episode Month

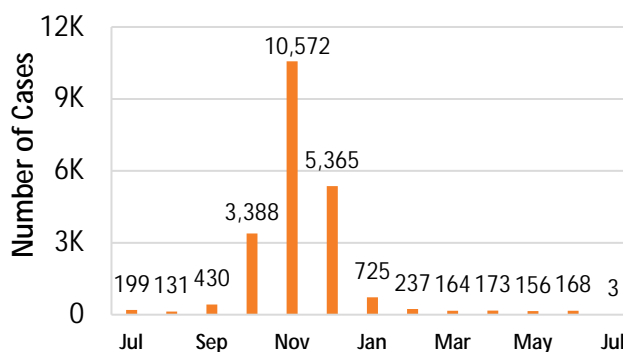


Table 1. Respiratory Surveillance Indicators

Indicator	2022-23 Fiscal Year	2021-22 Fiscal Year	Prior 5-Year Average [†]
COVID-19			
Cases*	156,475	551,121	
Outbreaks [‡]	498	605	
Deaths [§]	626	1,635	
INFLUENZA			
Cases	21,711	4,192	11,253
Outbreaks [‡]	25	1	40
Deaths [§]	44	8	108

FY 2022-23 is 7/3/2022- 7/1/2023, Weeks 27-26. Previous weeks' case counts or percentages may change due to delayed processing or reporting.

*Confirmed COVID-19 cases only.

[†] Includes FYs 2017-18, 2018-19, 2019-20, 2020-21, and 2021-22.

[‡] See page 17 for outbreak definitions. Includes only outbreaks occurring in skilled nursing facilities and other residential congregate settings.

[§] Current FY deaths are shown by week of report; prior FY deaths are shown by week of death.

Respiratory Virus Surveillance Report



COVID-19 and Influenza Cases by Episode Week, Fiscal Year

Figure 2.1. San Diego County COVID-19 Confirmed and Probable Cases by CDC Episode Week, * 2022-23 Fiscal Year (N=177,370)

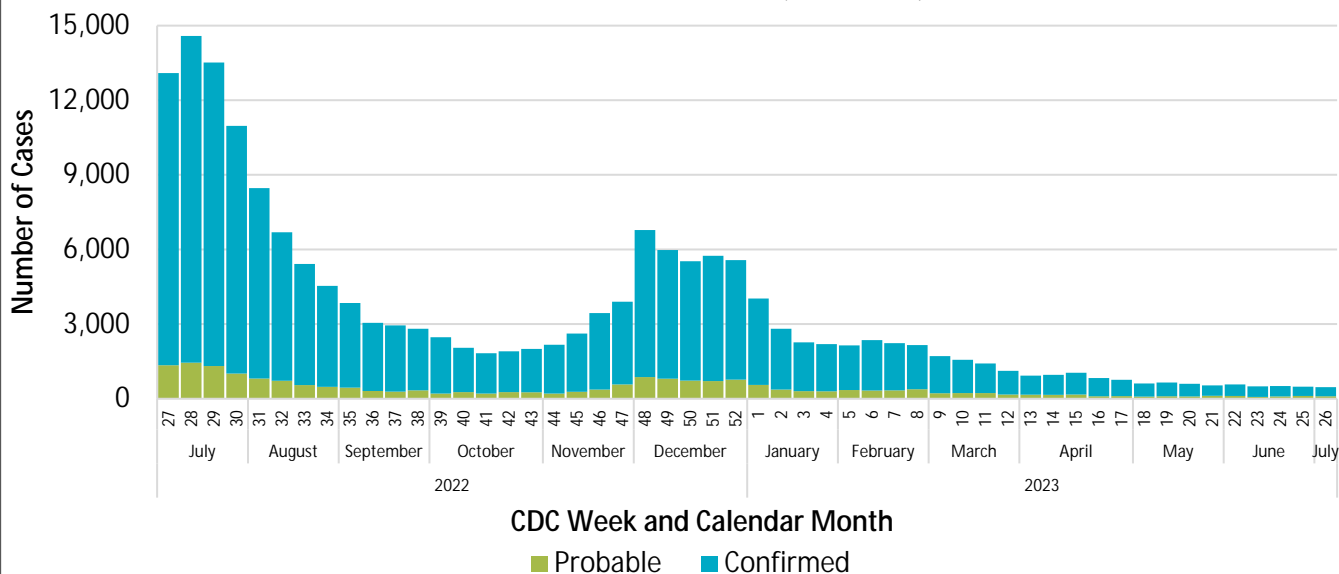
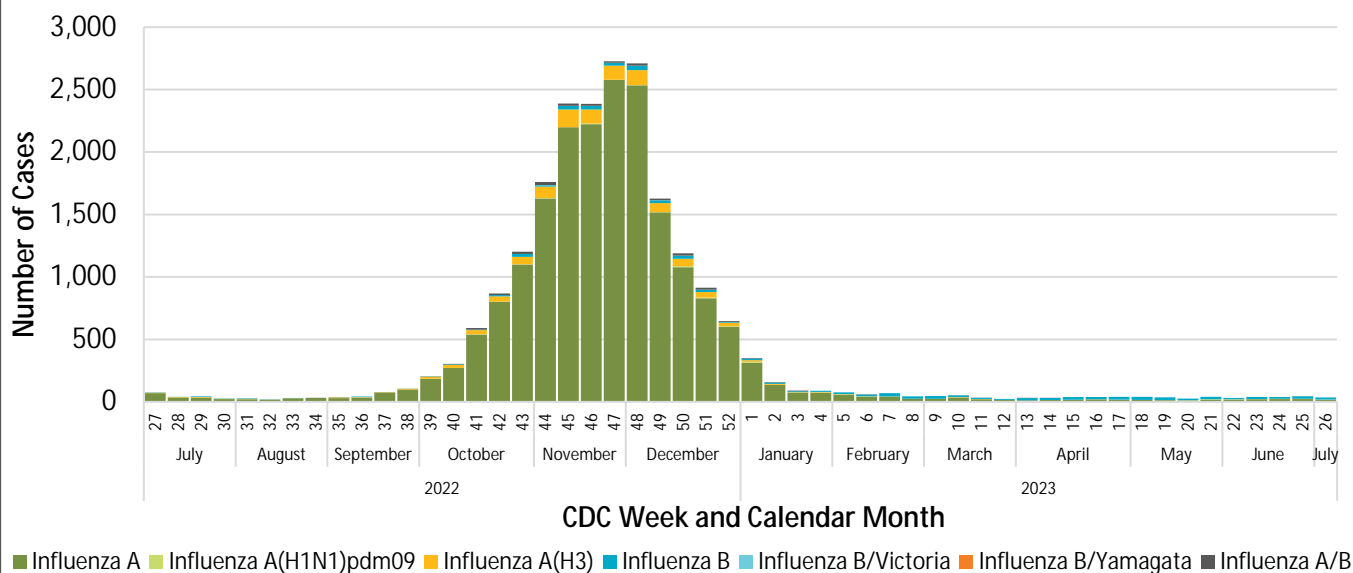


Figure 2.2. San Diego County Influenza Cases by Type and CDC Episode Week, * 2022-23 Fiscal Year (N=21,711)



*Episode date is the earliest available of symptom onset date, specimen collection date, date of death, date reported. Data for the most recent week may be incomplete.

Respiratory Virus Surveillance Report



Cumulative COVID-19 and Influenza Cases

Figure 3.1. Cumulative COVID-19 Confirmed and Probable Cases by CDC Episode Week* and Fiscal Year

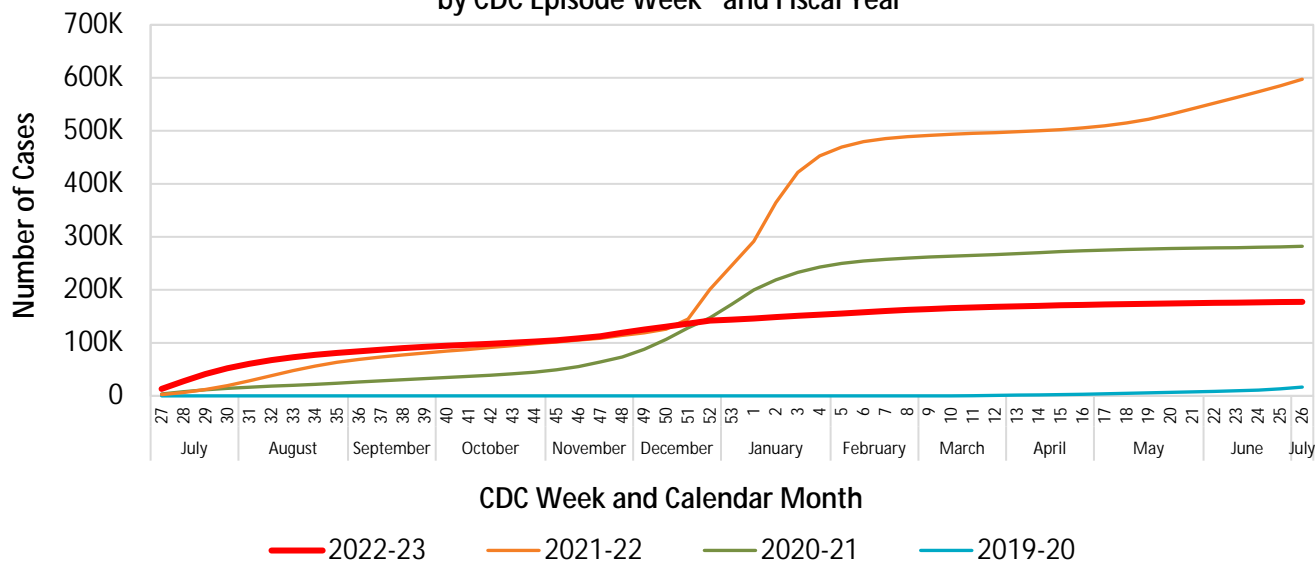
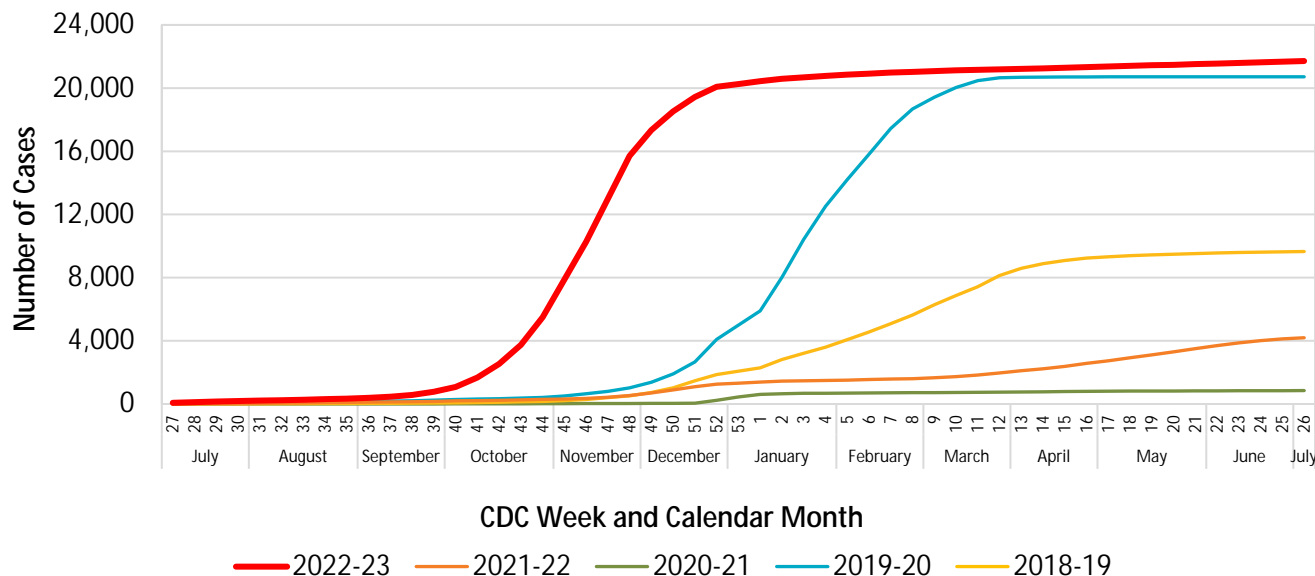


Figure 3.2. Cumulative Influenza Cases by CDC Episode Week* and Fiscal Year



*Episode date is the earliest available of symptom onset date, specimen collection date, date of death, date reported. Data for the most recent week may be incomplete.

† Probable COVID-19 cases are antigen positive tests received since August 1, 2020.

Respiratory Virus Surveillance Report



COVID-19 Hospital and ICU Census

Figure 4. COVID-19-Positive Hospitalized and ICU Patients, 7-Day Rolling Average, San Diego County

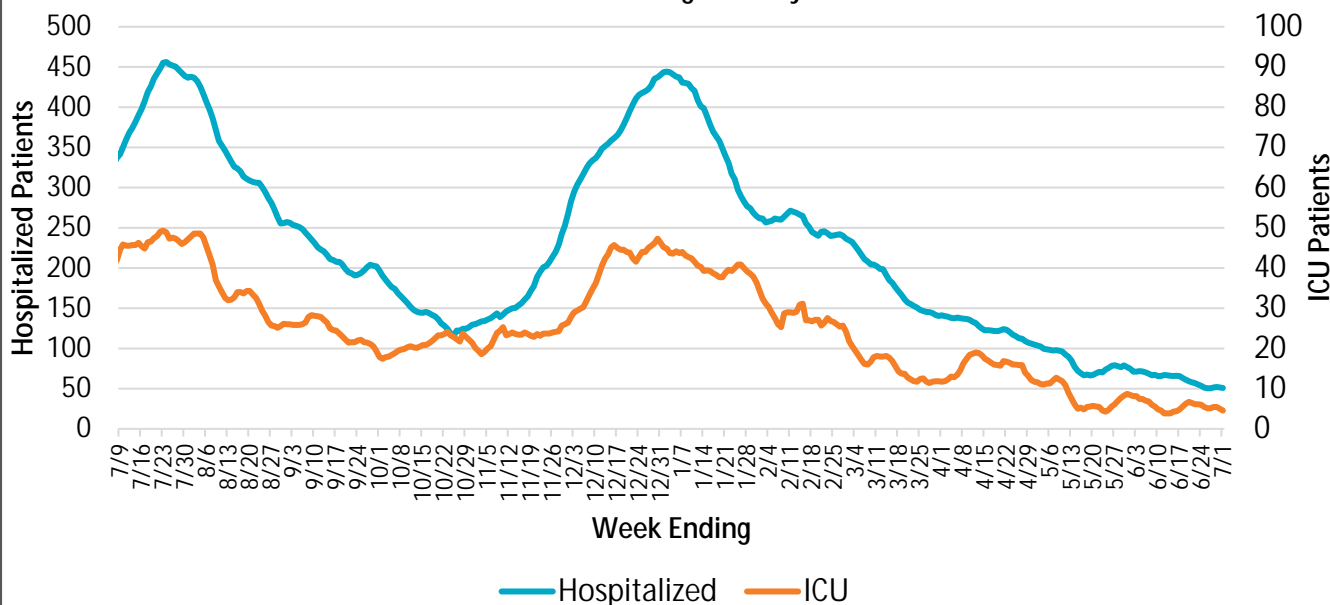
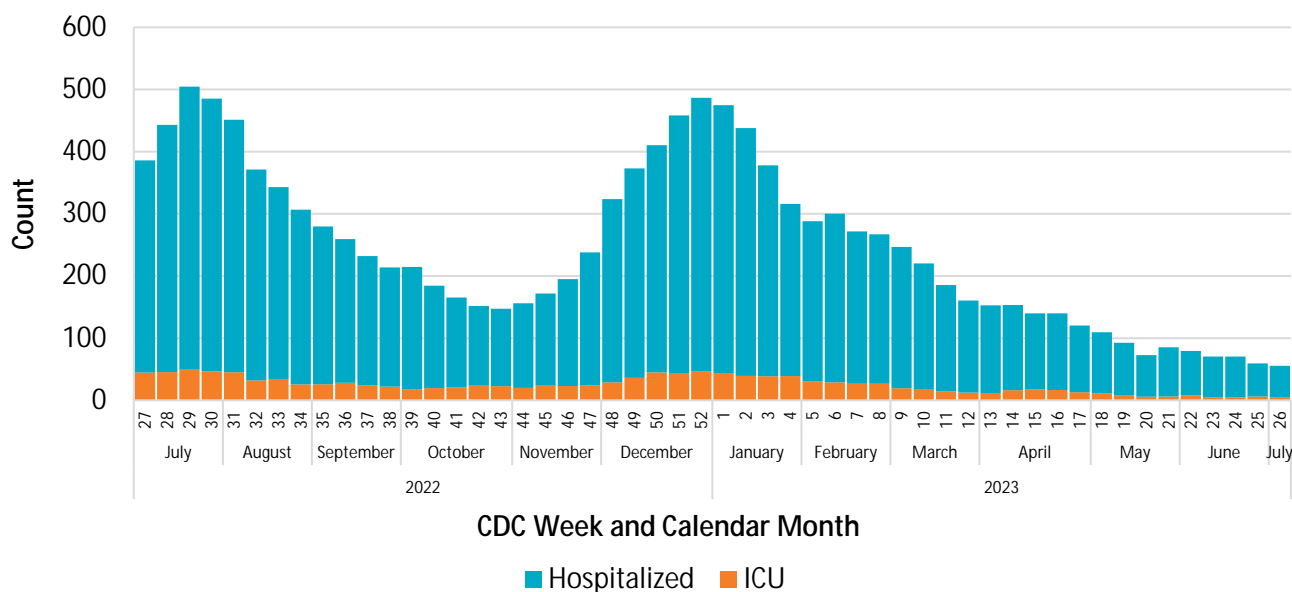


Figure 5. COVID-19-Positive Hospitalized and ICU Patients, 7-Day Rolling Average, San Diego County

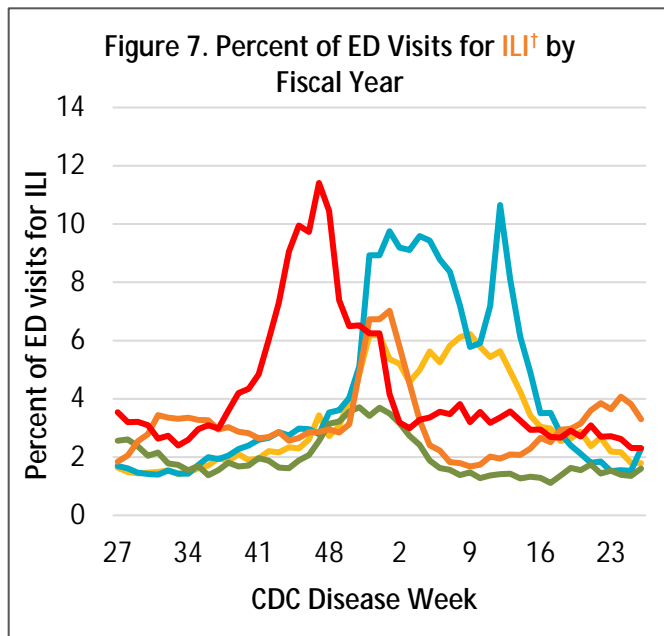
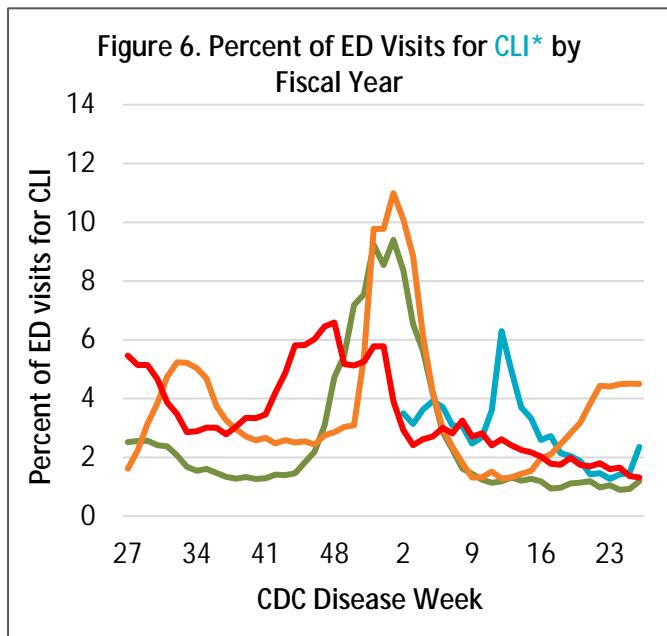


Respiratory Virus Surveillance Report

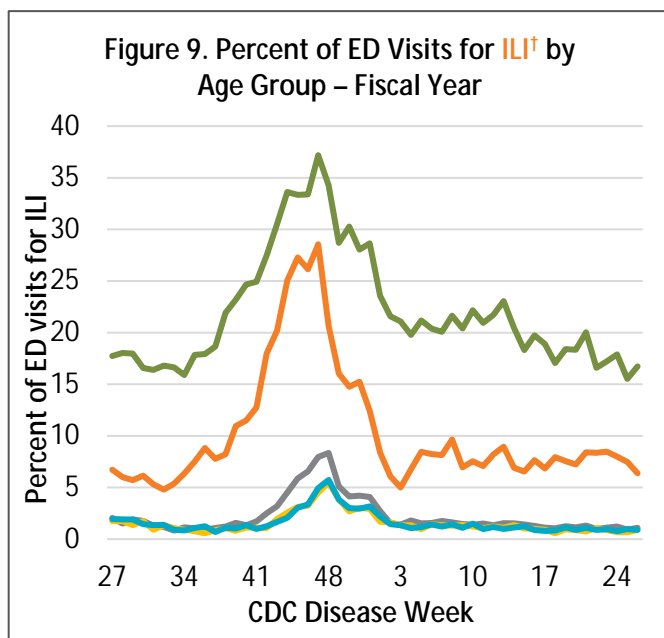
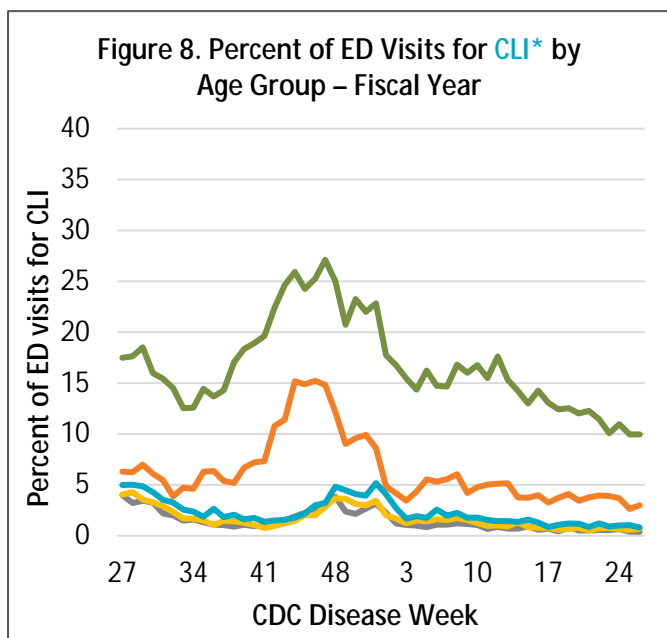


Emergency Department Data: COVID-like Illness and Influenza-like Illness

Fiscal Year 2018-2019 2019-2020 2020-2021 2021-2022 2022-2023



Age Group 0-4 years 5-17 years 18-49 years 50-64 years 65+ years



*COVID-like Illness (CLI) includes fever and cough, shortness of breath, or difficulty breathing OR coronavirus diagnostic codes.

†Influenza-like illness (ILI) includes fever plus cough and/or sore throat.

Data through
7/1/2023

Epidemiology and Immunization Services Branch
www.sdepi.org (619) 692-8499

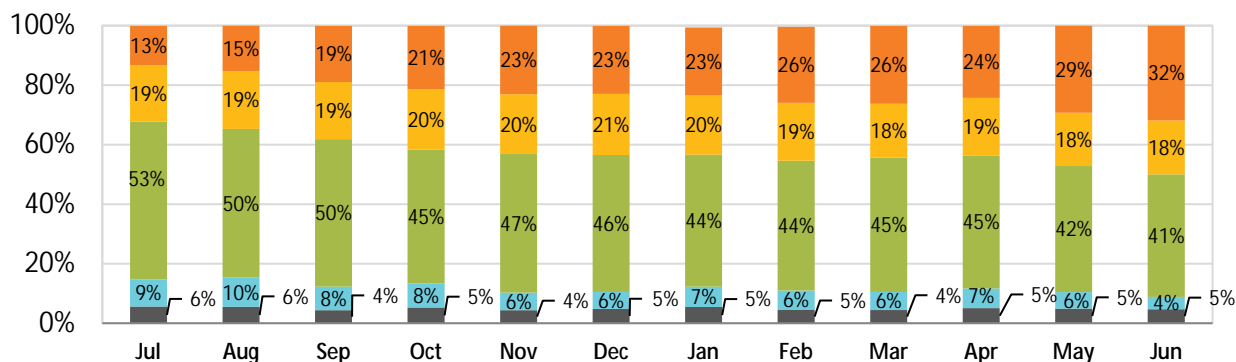
Respiratory Virus Surveillance Report



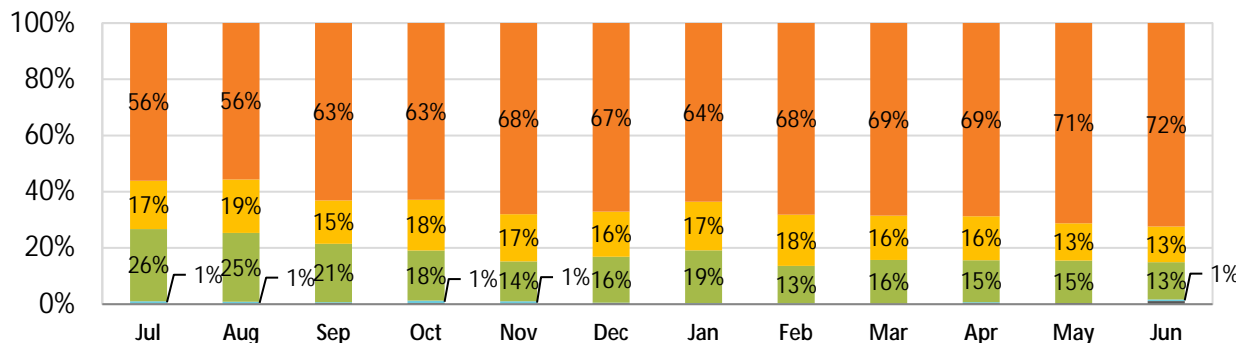
Figures 10-12. Monthly COVID-19 Cases, Hospitalizations, and Deaths by Age

0-4 yrs 5-17 yrs 18-49 yrs 50-64 yrs 65+ yrs

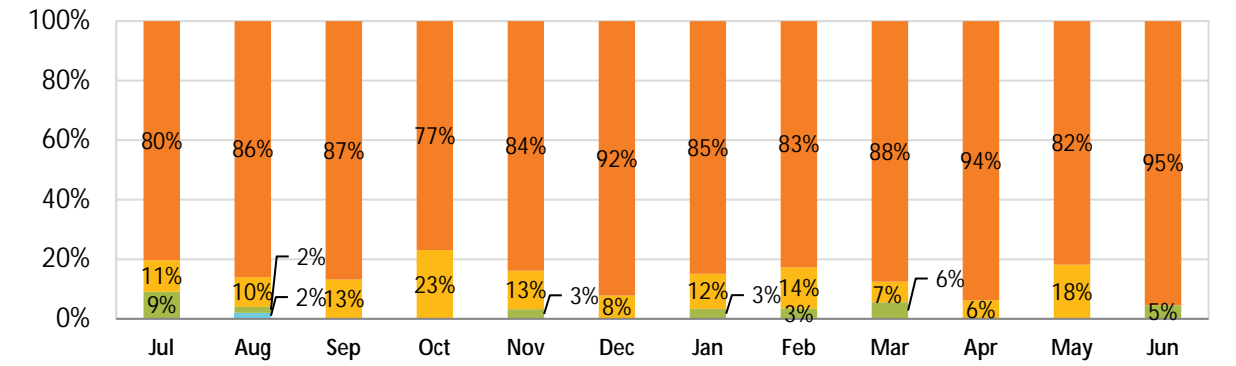
Confirmed Cases



Hospitalizations



Deaths



COVID-19 cases are grouped by episode date, hospitalizations are grouped by date admitted, and deaths are grouped by date of death. Episode date is the earliest available of symptom onset date, specimen collection date, date of death, date reported. Date admitted is not known for all hospitalizations; information may be updated as case investigations proceed.

Respiratory Virus Surveillance Report



Influenza Case Counts by Age

■ 0-4 yrs ■ 5-17 yrs ■ 18-49 yrs ■ 50-64 yrs ■ 65+ yrs

Figure 13. Proportion of Influenza Cases by Age Group and Fiscal Year

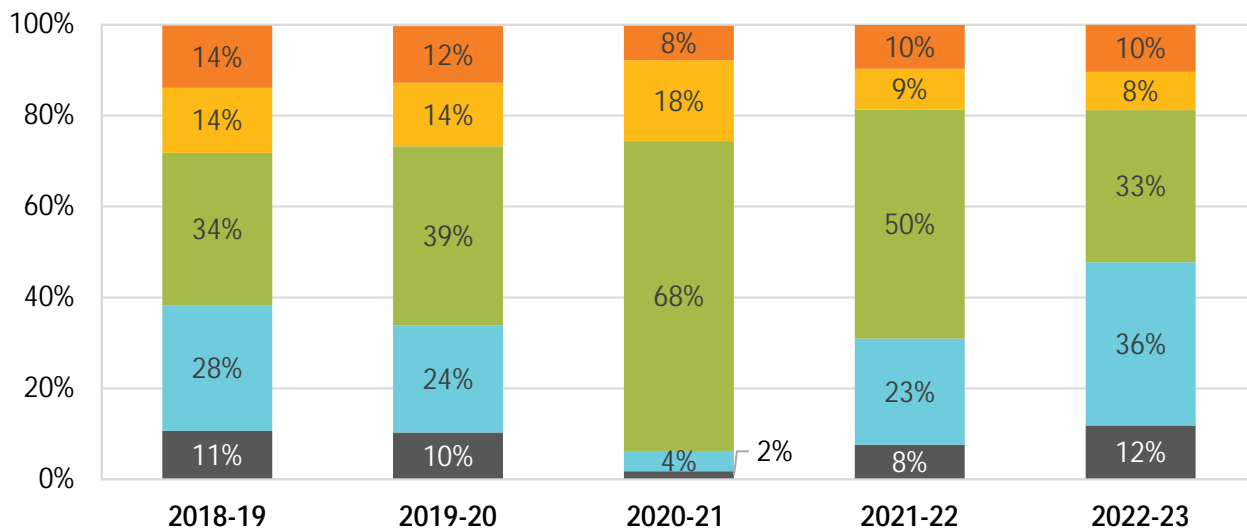
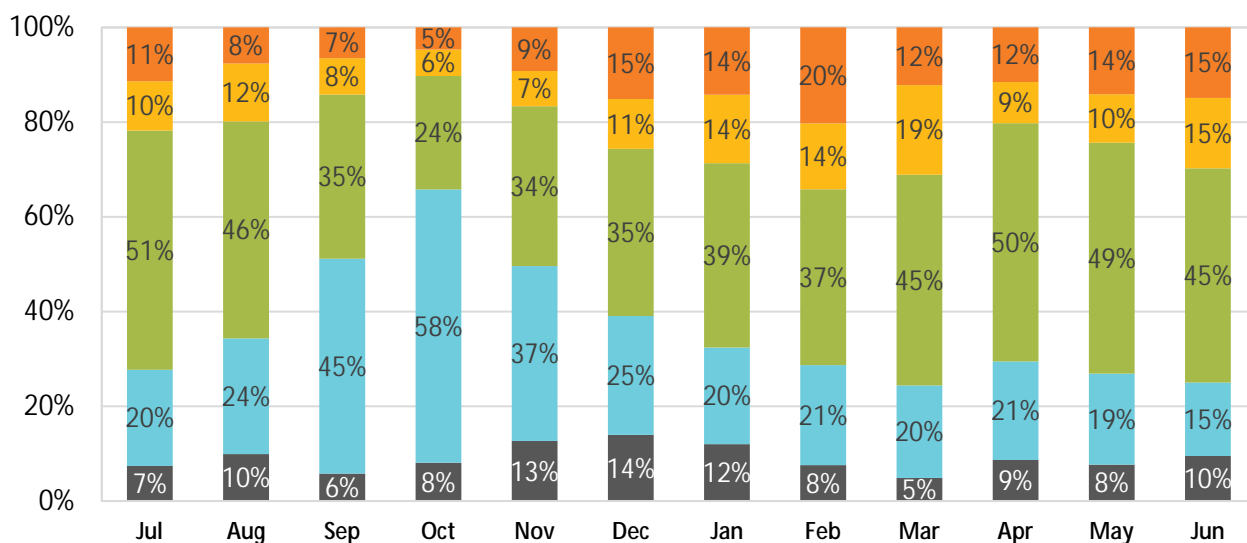


Figure 14. Proportion of Influenza Cases by Age Group and Episode Month, 2022-23 Fiscal Year

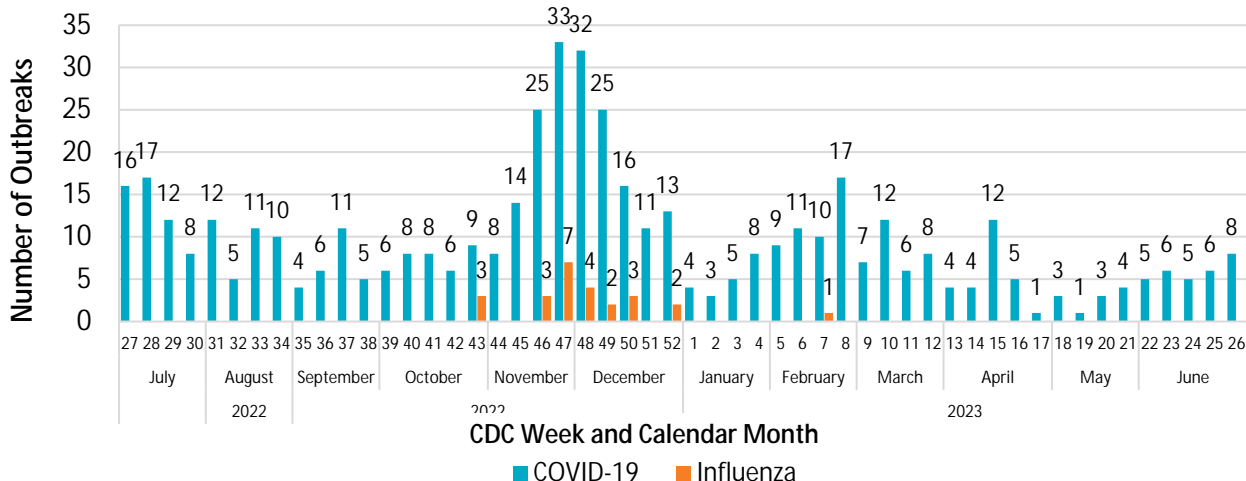


Respiratory Virus Surveillance Report



COVID-19 and Influenza Outbreaks in Residential Congregate Settings*

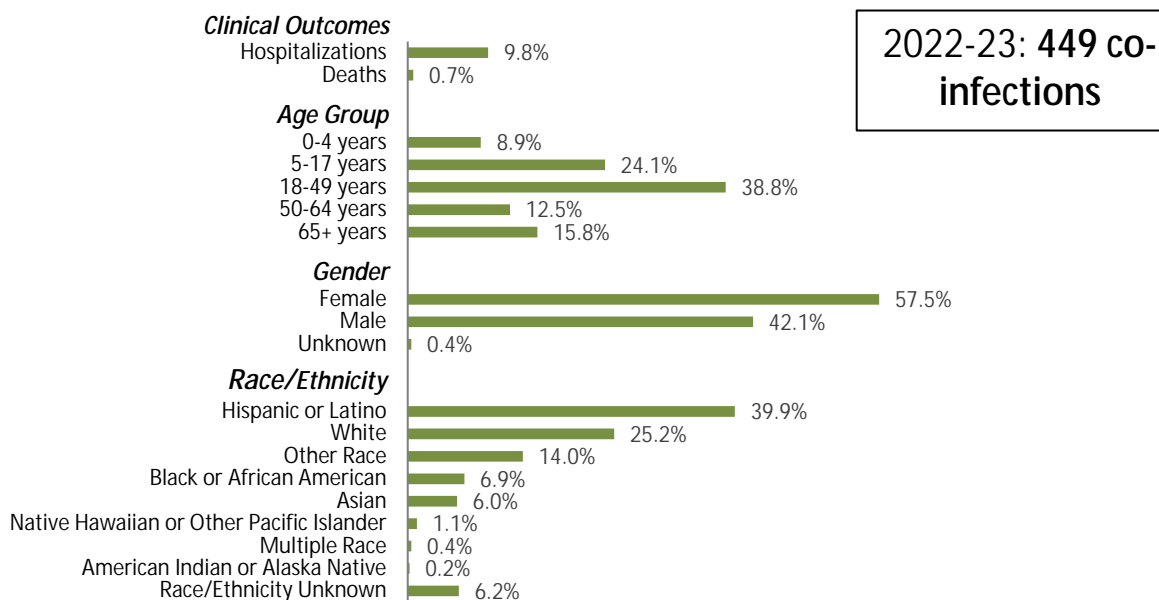
Figure 15. COVID-19 and Influenza Outbreaks by Week of Onset



*Includes skilled nursing facilities, assisted living facilities, group homes, correctional facilities, homeless shelters.

COVID-19 and Influenza Co-infections

Figure 16. Selected Characteristics of COVID-19 and Influenza Co-infections*, 2022-23 Fiscal Year



*Co-infections are identified as any positive influenza tests and positive RT-PCR or antigen tests for SARS-CoV-2 (the causative agent of COVID-19) within one week of each other. There are 416 confirmed and 33 probable COVID-19 cases among the co-infections.

Data through
7/1/2023

Epidemiology and Immunization Services Branch
www.sdepi.org (619) 692-8499

Respiratory Virus Surveillance Report



COVID-19 and Influenza Deaths

Figure 17. COVID-19 Deaths by Fiscal Year

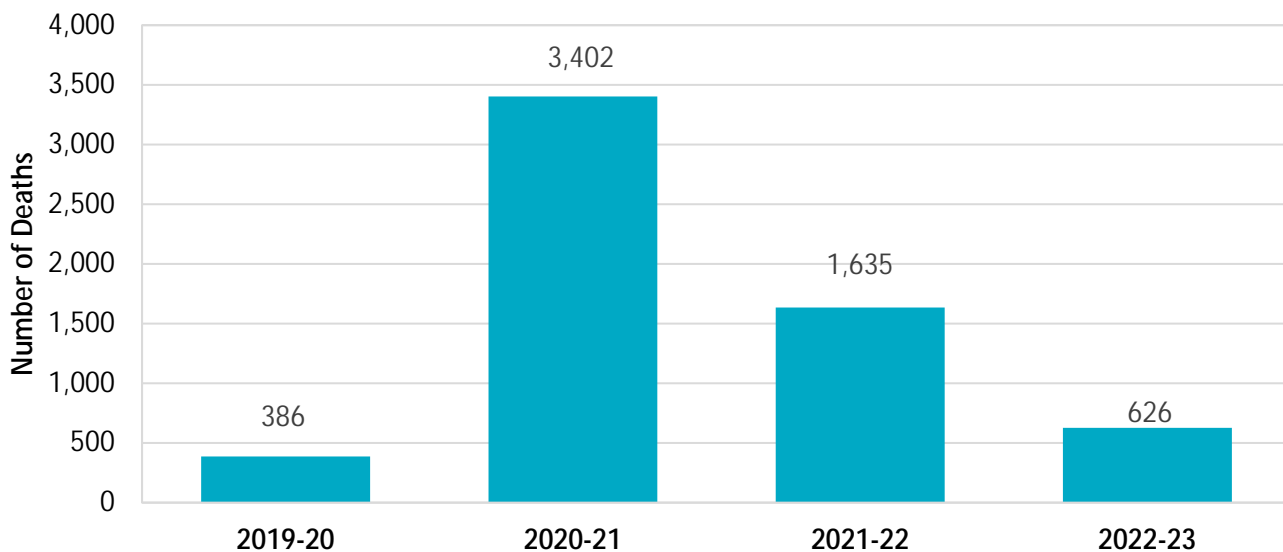
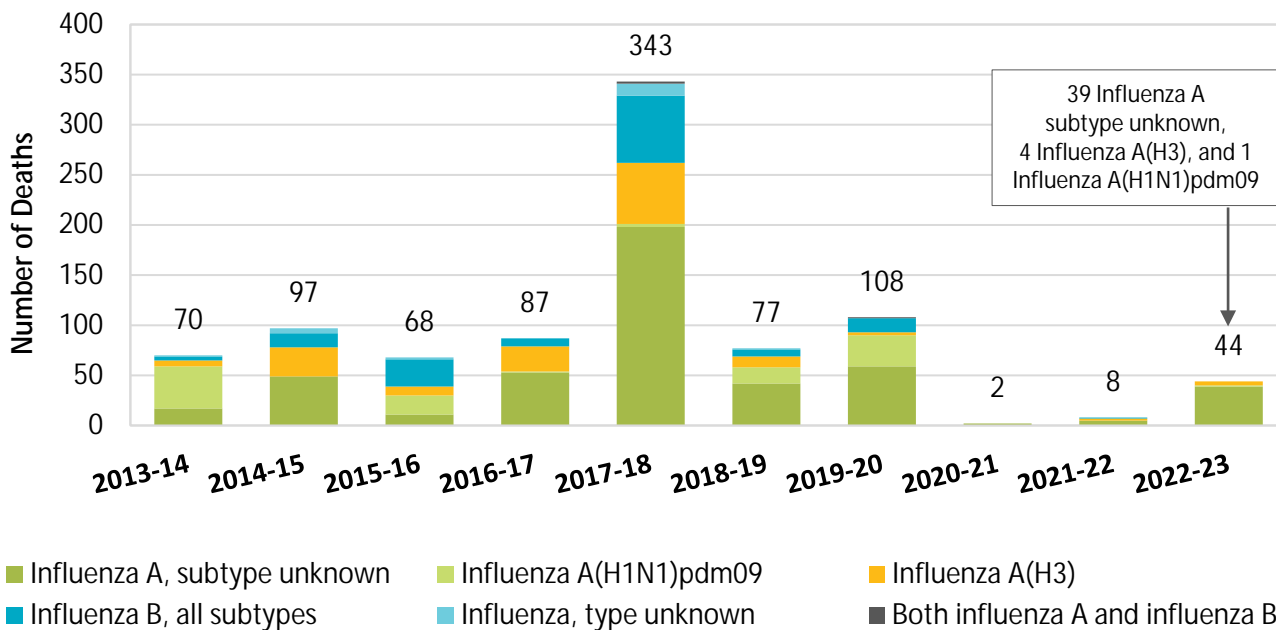


Figure 18. Influenza Deaths by Type and Fiscal Year



Respiratory Virus Surveillance Report



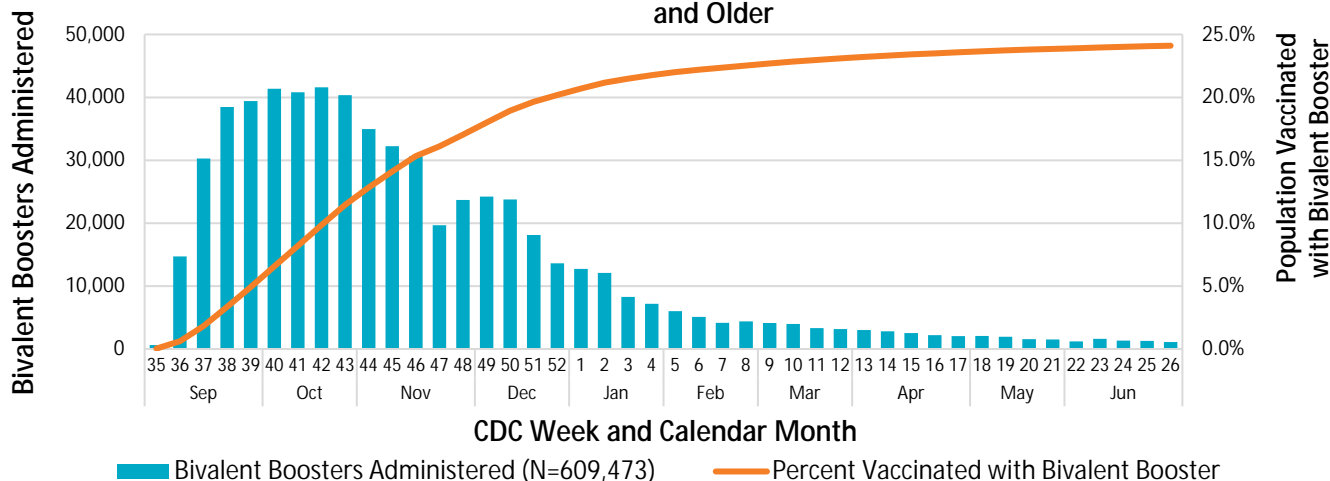
Table 2. Summary of Deaths, 2022-23 Fiscal Year

	COVID-19 Deaths	Influenza Deaths
Age		
0-4 years	0 (0.0%)	1 (2.3%)
5-17 years	1 (0.2%)	0 (0.0%)
18-49 years	19 (3.0%)	3 (6.8%)
50-64 years	67 (10.7%)	5 (11.4%)
65+ years	539 (86.1%)	35 (79.6%)
Gender		
Male	359 (57.3%)	19 (43.2%)
Female	267 (42.7%)	25 (56.8%)
Race/Ethnicity		
American Indian or Alaska Native	3 (0.5%)	0 (0.0%)
Asian	57 (9.1%)	3 (6.8%)
Black or African American	26 (4.2%)	1 (2.3%)
Hispanic or Latino	126 (20.1%)	17 (38.6%)
Native Hawaiian or Other Pacific Islander	5 (0.8%)	0 (0.0%)
Other/Multiple Race	14 (2.2%)	1 (2.3%)
White	395 (63.1%)	22 (50.0%)
Vaccinated*	448 (71.6%)	12 (27.3%)
Underlying Conditions	540 (86.3%)	42 (95.5%)

*Known to be vaccinated for influenza or at least primary series for COVID-19.

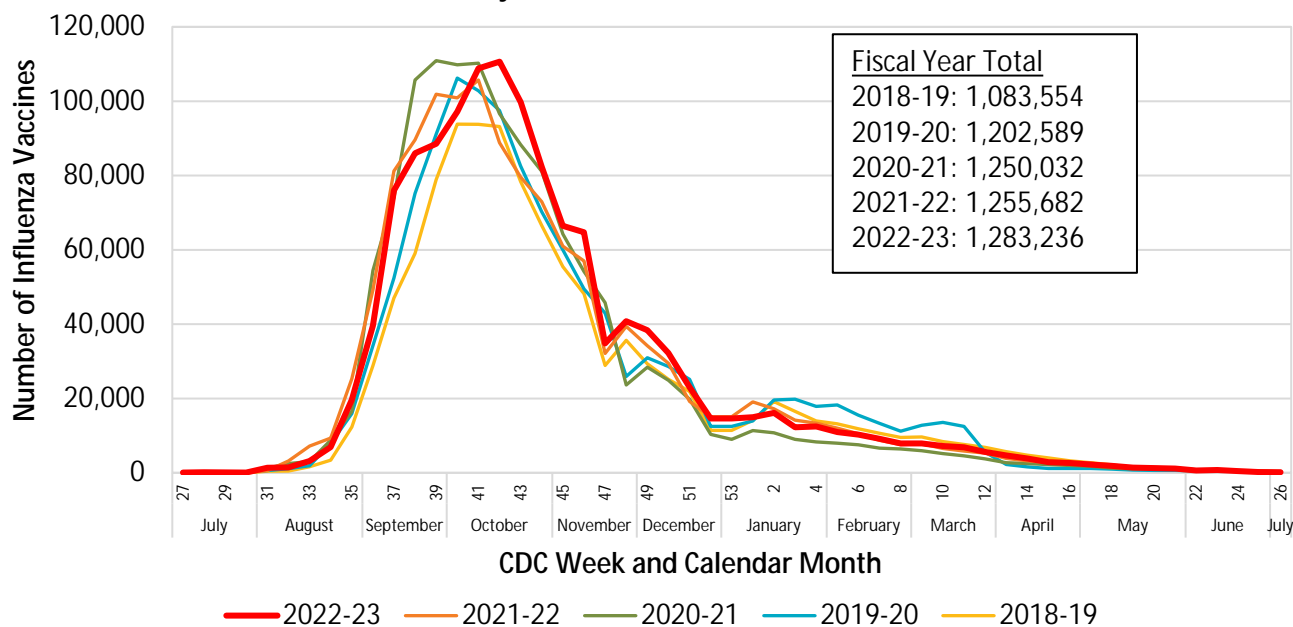
Vaccinations Administered

Figure 19. Number of COVID-19 Bivalent Boosters and Cumulative Percent of Persons Vaccinated With a Bivalent Booster, San Diego County Residents Age 6 Months and Older



The bars show COVID-19 bivalent boosters administered, not individuals vaccinated. The line shows the percent of persons vaccinated with bivalent boosters per the dose and schedule regimen for the vaccine received. The bivalent vaccine was authorized for use in the United States in late August, so the data shown are since the bivalent vaccine became available.

Figure 20. Number of Influenza Vaccinations Administered* by CDC Week and Fiscal Year



*Week 52 data are repeated for week 53 for years that do not include week 53.

Respiratory Virus Surveillance Report



Wastewater Surveillance

Figure 21. SARS-CoV-2 Detection in Wastewater

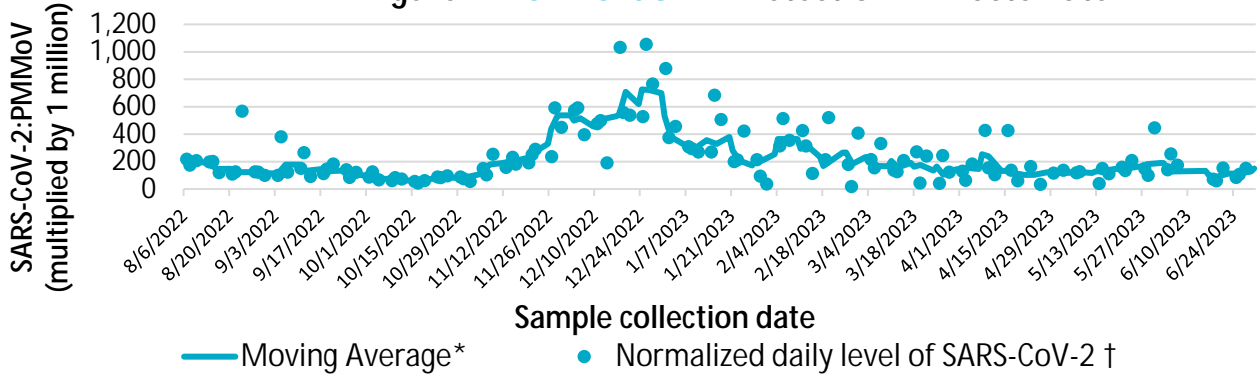


Figure 22. Influenza A[‡] Detection in Wastewater

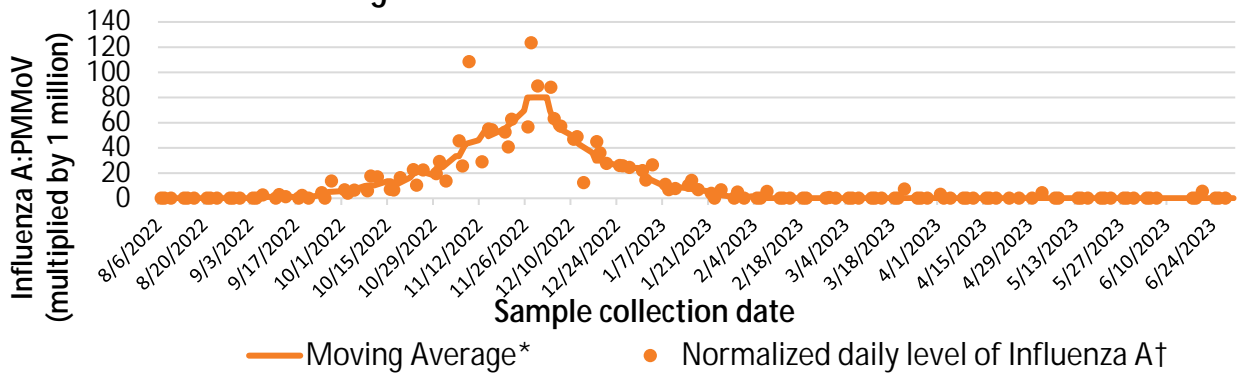
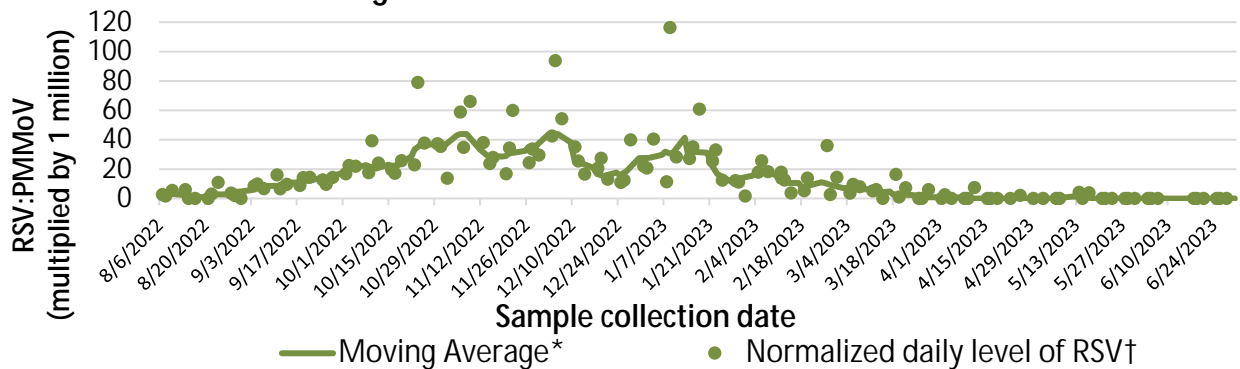


Figure 23. RSV Detection in Wastewater



Data provided by Wastewater SCAN: <https://wastewaterscan.org/>.

*Calculated by taking the average of the 5 samples centered around a date after excluding the highest and lowest values.

† Data are normalized to a common, harmless plant virus that is consumed when people eat called pepper mild mottle virus (PMMoV).

‡ Detection of influenza in wastewater is specific to influenza A.

Data through
7/1/2023

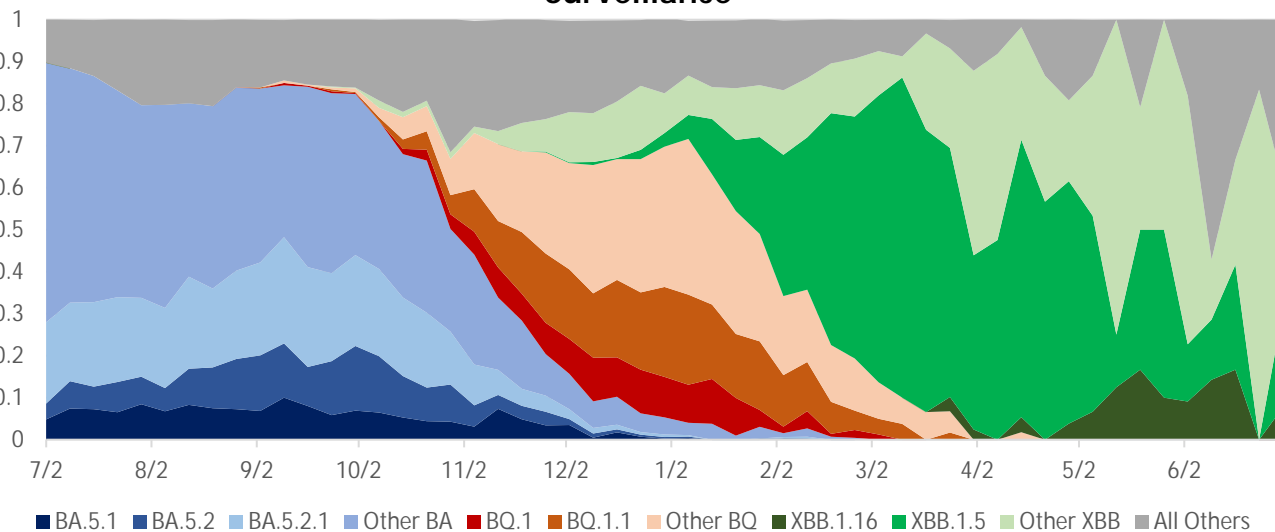
Epidemiology and Immunization Services Branch
www.sdepi.org (619) 692-8499

Respiratory Virus Surveillance Report



COVID-19 Surveillance on Variants

Figure 24. SARS-CoV-2 Variant Prevalence from Genomic Surveillance

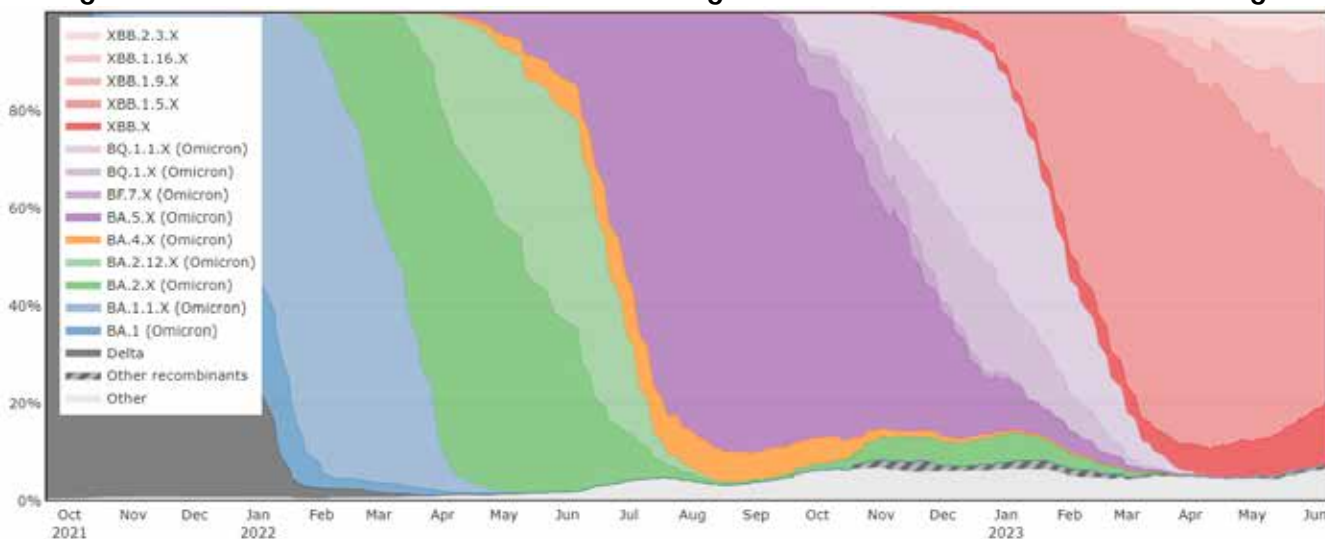


Variant calls for SARS-CoV-2 genomes generated from clinical samples were obtained from the CDPH COVIDNET dashboard and GISAID. Data was then filtered to only include samples from San Diego county within the past 3-months

(<https://testing.covid19.ca.gov/covidnet/>, <https://gisaid.org/>).

For some weeks, very limited specimens may have been tested and findings should be interpreted with caution.

Figure 25. SARS-CoV-2 Wastewater Lineage Prevalence Over Time in San Diego



Source: SARS-CoV-2 variant prevalence in wastewater was generated by the SEARCH consortia

(<https://searchcovid.info/dashboards/wastewater-surveillance/>).

Data through
7/1/2023

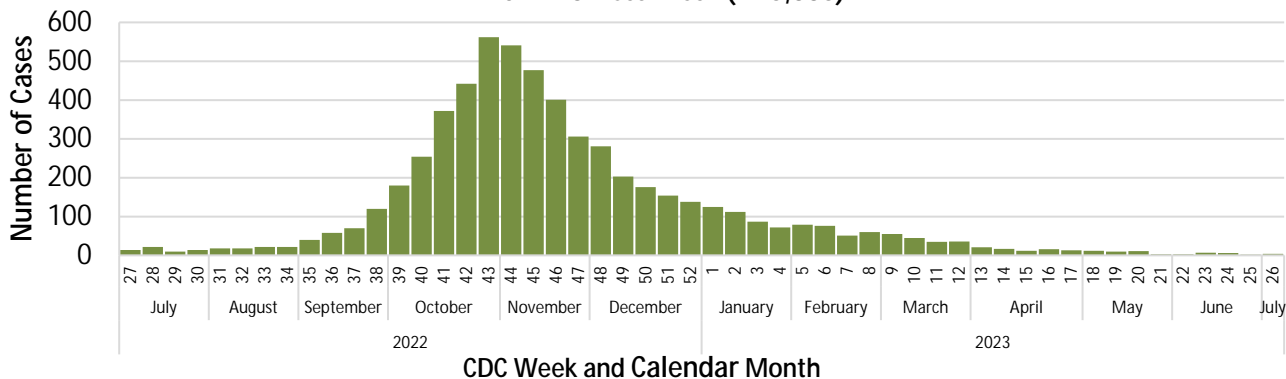
Epidemiology and Immunization Services Branch
www.sdepi.org (619) 692-8499

Respiratory Virus Surveillance Report



Respiratory Syncytial Virus (RSV) Surveillance

Figure 26. San Diego County RSV Cases by CDC Episode Week, *
2022-23 Fiscal Year (N=5,885)



Results displayed were voluntarily reported by local San Diego County health systems. Reporting of RSV test results is not mandated. Interpretation of trends should be made with caution.

Figure 27. Proportion of RSV Cases by Age Group and Month, 2022-23 Fiscal Year

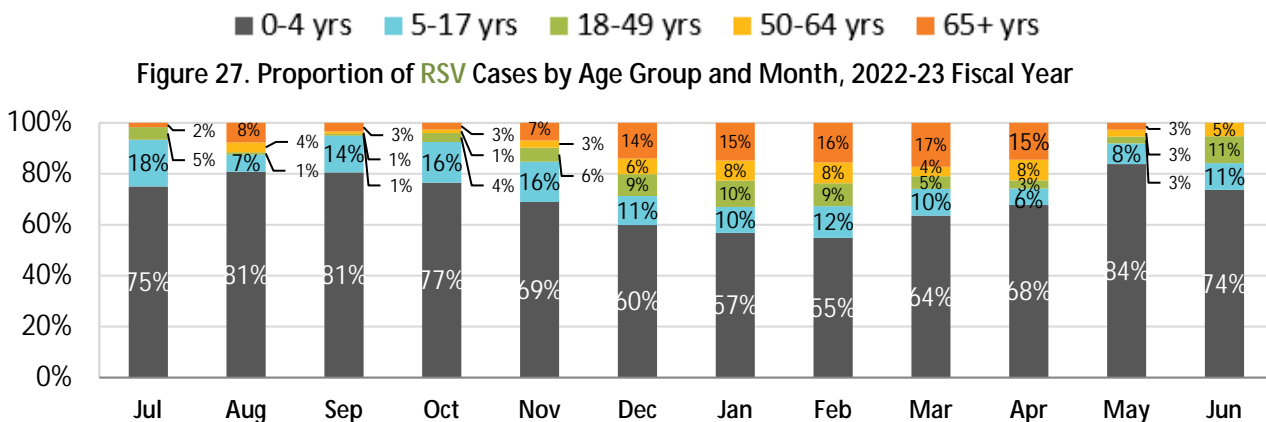
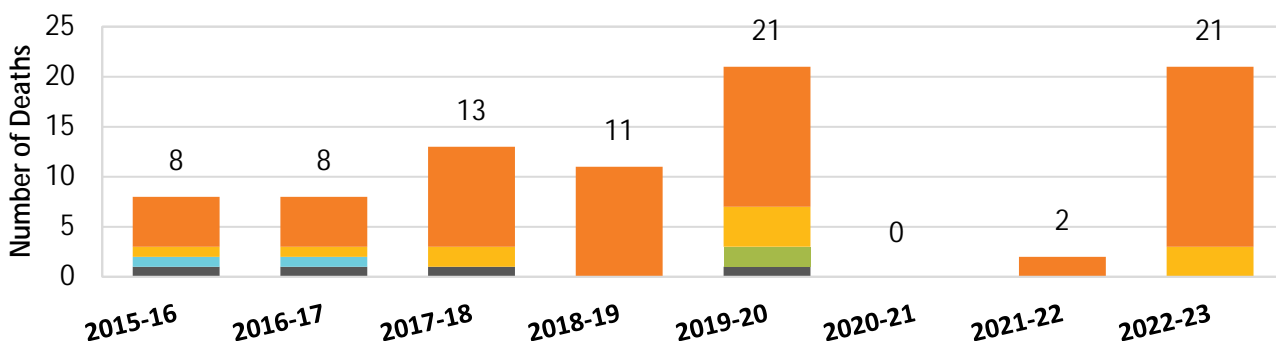


Figure 28. RSV Deaths* by Age and Fiscal Year



*These deaths are RSV-associated, defined as having final underlying cause of death International Classification of Diseases codes of J12.1 (RSV-pneumonia), J20.5 (RSV-bronchitis), or J21.0 (RSV-bronchiolitis), or RSV listed as an immediate cause of death or an other significant condition contributing to death on the death certificate.

Respiratory Virus Surveillance Report



San Diego County Respiratory Virus Surveillance Report: Supplemental Information

Prepared by Epidemiology and Immunization Services Branch

www.sdepi.org

Respiratory Virus Surveillance Report can be found on the County of San Diego COVID-19 data [website](#).

COVID-19 Reporting in San Diego County

Facilities Certified Under CLIA to perform Non-waived Testing are required to report all laboratory-based SARS-CoV-2 NAAT results, including positive and non-positive (i.e., negative, indeterminate). Facilities with a CLIA Certificate of Waiver are required to report SARS-CoV-2 POSITIVE diagnostic results only. Laboratories that test San Diego County residents (regardless of the physical location of the laboratory) must register with CDPH for electronic laboratory reporting (ELR). Information about how to establish an electronic connection with CDPH to route positive and negative COVID-19 results to San Diego County can be found at the CDPH [Health Information Exchange Gateway](#). Laboratories waiting for ELR to be established are required to report laboratory-positive results to the County Epidemiology Unit by FAX at **(858) 715-6458**. Hospitalizations and deaths of patients due to COVID-19 must be reported within one day of identification using a [COVID-19 Confidential Morbidity Report Form](#).

NOTE: Self-administered tests are not reported to the County of San Diego and are not included in COVID-19 data reporting.

Influenza Reporting in San Diego County

Individual influenza cases are reportable to the County of San Diego Epidemiology and Immunization Services Branch. Please report laboratory-positive influenza results to the County Epidemiology Unit by FAX **(858) 715-6458** using a [Confidential Morbidity Report Form](#), or an [Influenza Case Report Form](#), and/or a copy of the laboratory results. Also, please indicate if the patient died and/or is a resident of a congregate living facility (if known).

Influenza specimens may be sent to [Public Health Laboratory](#) (PHL) for confirmation and subtyping. Please contact PHL at **(619) 692-8500** before submitting or for questions and use the current PHL [Test Requisition Form](#). Contact the Epidemiology Unit by telephone **(619) 692-8499** or email (EpiDiv.HHSA@sdcountry.ca.gov) with questions about influenza data. Influenza outbreaks should be reported by telephone to **(619) 692-8499**.

Resource Links

- § County of San Diego Epidemiology Unit www.sdepi.org
- § County of San Diego [2021-22 Influenza Season Summary](#)
- § County of San Diego [COVID-19 Data website](#)
- § County of San Diego Immunization Unit (SDIZ) www.sdiz.org
- § California [Immunization Registry](#) (CAIR2)
- § California Department of Public Health (CDPH) [COVID-19 Update](#)
- § California Department of Public Health (CDPH) [Influenza Update](#)
- § Centers for Disease Control and Prevention (CDC) [COVID-19 Surveillance](#)
- § Centers for Disease Control and Prevention (CDC) [Influenza Surveillance](#)

Data through
7/1/2023

Epidemiology and Immunization Services Branch
www.sdepi.org (619) 692-8499

Respiratory Virus Surveillance Report



Data Sources and Definitions

- **Case reports:** Medical providers and laboratories report individual cases of PCR-confirmed and antigen-positive probable COVID-19 and individual cases of PCR and rapid or antigen test positive influenza via fax or electronic laboratory reporting (ELR) to Public Health Services Epidemiology Unit (Epidemiology). Self-administered tests are not reported. Respiratory syncytial virus (RSV) reporting is not mandated, but many San Diego County health systems voluntarily report positive RSV detections, primarily via ELR.
- **Deaths:** The County of San Diego requests that all deaths related to COVID-19 and influenza be reported for surveillance purposes. Pediatric flu deaths (under 18 years of age) are legally reportable in California. RSV deaths in children under age 5 are also legally reportable. COVID-19, RSV, and influenza-related deaths are also identified through death certificate registration. The County Office of Vital Records notifies Epidemiology when a new death is registered with COVID-19, RSV, or influenza listed as a cause of death or contributing condition. The Epidemiology Unit compiles the data, and only reports deaths that can be verified by a death certificate. As of 7/20/2023, COVID deaths with a date of death of 1/1/2023 and later are based on death certificate data from the California Vital Records Business Intelligence System (VRBIS). These are COVID-associated deaths where COVID-19 or an equivalent term is indicated in the immediate cause of death, underlying cause of death, or significant conditions contributing to death fields in death certificate data. This represents a change from previous surveillance methods and will result in a change in the number of deaths reported in 2023 COVID-19 death surveillance data.
- **Percent pneumonia and influenza deaths:** The percentage of all deaths registered that had either pneumonia and/or influenza listed as a cause of death is obtained directly from the Vital Records data system on a weekly basis.
- **COVID-19 hospitalization data:** Data is from the [California COVID-19 State Dashboard](#). Hospitalization counts include all patients diagnosed with COVID-19 during their stay. This does not necessarily mean they were hospitalized because of COVID-19 complications or that they experienced COVID-19 symptoms. Hospitals report the total number of patients each day, not the number of new patients. Includes residents and non-residents hospitalized at San Diego County hospitals.
- **Emergency department syndromic surveillance:** Electronic emergency department data are reported to the Epidemiology Unit daily. The percent of ED visits for **influenza-like illness (ILI)** and **COVID-like illness (CLI)** based on chief complaints or diagnosis is calculated for each week. CLI is defined as fever and cough, shortness of breath, or difficulty breathing OR coronavirus diagnostic codes. ILI is defined as fever and cough and/or sore throat.
- **Outbreaks:** Outbreaks in residential congregate settings, such as skilled nursing facilities, assisted living facilities, group homes, correctional facilities, and homeless shelters, are included in this report. Epidemiology identifies outbreaks when facilities call to report. Other potential outbreaks are identified when multiple cases share an address or have a residential address that matches a skilled nursing or long-term care facility.
 - **COVID-19 outbreaks:**
 - Skilled Nursing Facilities: at least one facility-acquired case of laboratory-confirmed COVID-19 in a resident.
 - Non-SNF Residential Congregate Settings: At least three suspected, probable, or confirmed COVID-19 cases within a 14-day period in epidemiologically-linked residents and/or staff.
 - § **Influenza outbreaks:** In a congregate living setting, outbreaks are defined as at least one laboratory-confirmed influenza in the setting of a cluster (≥ 2 cases) of influenza-like illness (ILI) within a 72-hour period.
- **Vaccinations:** Number of COVID-19 and influenza vaccinations registered in the California Immunization Registry (CAIR2) by participating providers. Some providers, including the VA, DoD, other military, some tribal, and prisons do not report to CAIR2.
- **Wastewater surveillance:** WastewaterSCAN, a national consortia, provides weekly monitoring for levels of SARS-CoV-2 and Influenza A in wastewater solids collected from the Point Loma processing plant.
- **Variant surveillance:** SARS-CoV-2 variant prevalence from genomic surveillance is based on clinical samples and is obtained from the California Department of Public Health COVIDNET (<https://testing.covid19.ca.gov/covidnet/>) dashboard and GISaid (<https://gisaid.org/>). Wastewater SARS-CoV-2 lineage prevalence was generated by the SEARCH (San Diego Epidemiology and Research for COVID Health) consortia (<https://searchcovid.info/dashboards/wastewater-surveillance/>).
- **SANDAG population estimates, vintage 2019:** Rates are calculated using 2019 population estimates from the San Diego Association of Governments.