



# COMMUNITY & FAITH-BASED ORGANIZATIONS SECTOR TELEBRIEFING

---

County of San Diego  
*Last Updated: 2/2/2022*



# WHEN IS THE NEXT TELEBRIEFING?



## CFBO Telebriefings: 1<sup>st</sup> Wednesdays of the Month

**Next telebriefing: March 2, 2022 | 1pm-2pm**

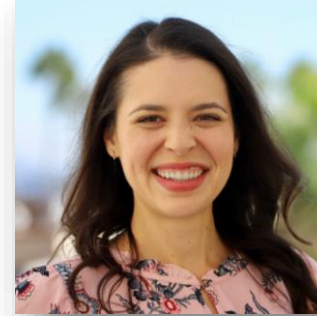
MARCH 2022						
Sun	Mon	Tue	Wed	Thu	Fri	Sat
27	28	1	2 CFBO Tele	3	4	5
6	7	8	9	10	11	12
13	14	15	16	17	18	19
20	21	22	23	24	25	26
27	28	29	30	31	1	2



## Agenda:

- Welcome & Announcements
- Medical Updates
- Reopening Updates
- Q&A
- Closing

## Our Speakers:



**NICOLE VILLA**

Community Health Program  
Specialist - *Live Well San Diego* Support Team



**JENNIFER M. TUTEUR, MD**

County of San Diego  
Deputy Chief Medical Officer



**GARY JOHNSTON**

Chief Resilience Officer, County  
COVID-19 Response Incident  
Commander, COVID-19  
Reopening Lead

# Welcome to the Community & Faith-Based Organizations Telebriefing



LIVE WELL  
SAN DIEGO

**A few reminders before we begin:**



This telebriefing is  
being recorded.



Your lines are muted.



Please enter your  
questions chat box.



Email your COVID-19 questions to:  
[COVID-questions@sdcounty.ca.gov](mailto:COVID-questions@sdcounty.ca.gov)



Email your other questions and connect with  
us at: [LiveWellCFBO@sdcounty.ca.gov](mailto:LiveWellCFBO@sdcounty.ca.gov)



# ANNOUNCEMENTS

---



LIVE WELL  
SAN DIEGO

# FREE HOME COVID TESTS



LIVE WELL  
SAN DIEGO

## ORDER FREE AT-HOME COVID-19 TESTS NOW!

Visit [covidtests.gov](https://covidtests.gov) to order free test kits

- Residential households in the U.S. can order one set of 4 free at-home tests from USPS.com. Here's what you need to know about your order:
  - Limit of one order per residential address
  - One order includes 4 individual rapid antigen COVID-19 tests
  - Orders will ship free starting in late January



# WHAT TO DO IF YOU HAVE COVID-19



LIVE WELL  
SAN DIEGO

## WHAT TO DO IF YOU HAVE COVID-19



### QUE HACER SI TIENES COVID-19

*This page is updated as needed, last updated on 1/6/22.*

If you have been diagnosed with, or are likely to have COVID-19, taking steps to protect yourself and others will help end this pandemic. Because you have a virus that can easily spread to others, not only is it important that you separate yourself from others and self-isolate, it is also mandated by the County of San Diego Public Health Officer Order.

On this page you will find the *Health Officer Order for Isolation of All Persons With or Likely to Have COVID-19* that outlines the legal mandate to isolate, instructions for home isolation, recommendations for close contacts, and resources available.

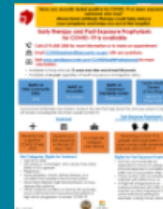
### Ending Home Isolation



Health Officer Order  
Isolation of Persons  
with COVID-19



Home Isolation  
Instructions for  
COVID-19



Available Treatments  
for COVID-19  
Webpage

These instructions are for all who test positive for COVID-19, regardless of vaccination status

If you have COVID-19 symptoms:

- Stay home and isolate for at least 5\* full days.
- Take a repeat diagnostic **test\*\*** (either PCR or antigen) on day 5 or later. A repeat test is required to end isolation after day 5.

## What To Do if You Have COVID-19



# DONATE BLOOD TODAY!



LIVE WELL  
SAN DIEGO



## URGENT NEED FOR BLOOD

Hospital patients need  
your help urgently!

**Schedule a donation today!**

[sandiegobloodbank.org](https://sandiegobloodbank.org) | (619) 400-8251

There is a critical blood shortage.  
Your donation will help save local lives.



There is a critical need for all blood types, and hospital patients need your help! Make an appointment today at [sandiegobloodbank.org/donate](https://sandiegobloodbank.org/donate) or call (619) 400-8251.

# COSD NALOXONE DISTRIBUTION PROGRAM (NDP)



LIVE WELL  
SAN DIEGO

- **Goal:** saturating the community with nasal naloxone is one of many strategies to prevent deaths from the opioid epidemic.
- **Process:** Complete and return a CoSD [NDP Provider Agreement](#) to [HarmReduction@sdcounty.ca.gov](mailto:HarmReduction@sdcounty.ca.gov)
  - **Include:**
    - number of nasal naloxone kits requested (1 kit = 2 doses)
    - shipping address and your organization's point of contact (name, phone number, and email address)
- Please direct questions to the BHS Harm Reduction team at [HarmReduction@sdcounty.ca.gov](mailto:HarmReduction@sdcounty.ca.gov)

# PERINATAL CARE NETWORK (PCN)



LIVE WELL  
SAN DIEGO



**PCN IS A TOLL-FREE PHONE DIRECT LINE THAT LINKS  
PREGNANT PEOPLE LIVING IN SAN DIEGO TO PRENATAL CARE  
AND OTHER SERVICES NEEDED DURING PREGNANCY.**

***1-800-675-2229***  
***(1-800-675-BABY)***



Expedite  
Medi-Cal

Link to  
Prenatal  
Care

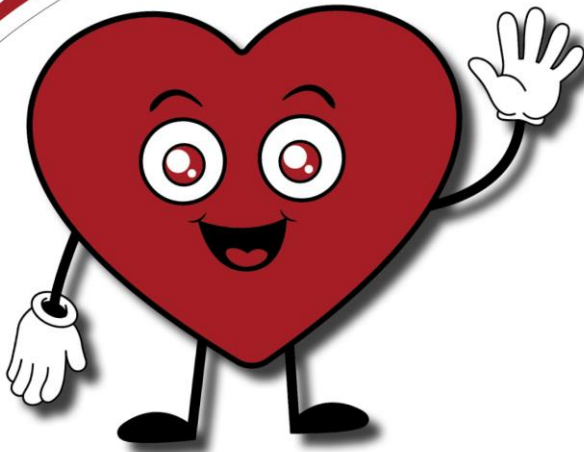
Direct  
Referral(s)

Link to  
Services

# LOVE YOUR HEART 2022



LIVE WELL  
SAN DIEGO



## Love Your Heart Week of Action

February 12-20, 2022

[LoveYourHeartSD.org](https://LoveYourHeartSD.org)

LOVE  YOUR HEART

Visit [LoveYourHeartSD.org](https://LoveYourHeartSD.org) to learn more!

# HOW YOU CAN PARTICIPATE IN LOVE YOUR HEART 2022



LIVE WELL  
SAN DIEGO

♥ **Saturday February 12 – Saturday February 20, 2022**

## PROMOTE

Spread the word about the love your heart event at your workplace, or among your neighbors and community groups.

## OFFER SCREENINGS

Host a screening site at your worksite, for either the public or your employees.

## AT HOME

Share virtual tools and resources to promote heart health!

Contact [loveyourheartSD@sdcounty.ca.gov](mailto:loveyourheartSD@sdcounty.ca.gov) or Visit [loveyourheartsd.org](https://loveyourheartsd.org)





# REOPENING UPDATES

---

**GARY JOHNSTON**  
CHIEF RESILIENCE OFFICER  
COUNTY COVID-19 RESPONSE INCIDENT COMMANDER  
COVID-19 REOPENING LEAD



# UPDATED FACE MASK REQUIREMENT



State of California—Health and Human Services Agency  
**California Department of Public Health**



**UPDATED  
ON 1/05**

**EFFECTIVE 12/15/21 – 2/15/22**

- **Face masks must be worn in all indoor public settings**
- Applicable to vaccinated and unvaccinated individuals
- Surgical masks or higher-level respirators are recommended



# MEDICAL UPDATES

---

*JENNIFER M. TUTEUR, MD, FAAFP  
DEPUTY CHIEF MEDICAL OFFICER  
MEDICAL CARE SERVICES DIVISION  
COUNTY OF SAN DIEGO HEALTH & HUMAN SERVICES AGENCY*





# COVID-19 CASE RATE BY VACCINATION STATUS



LIVE WELL  
SAN DIEGO

Case rate for not fully vaccinated residents is **3 times higher** than those fully vaccinated + booster

Dates: 1/9-1/15/2022

Not Fully Vaccinated\*  
Case Rate  
(per 100,000)

419.9

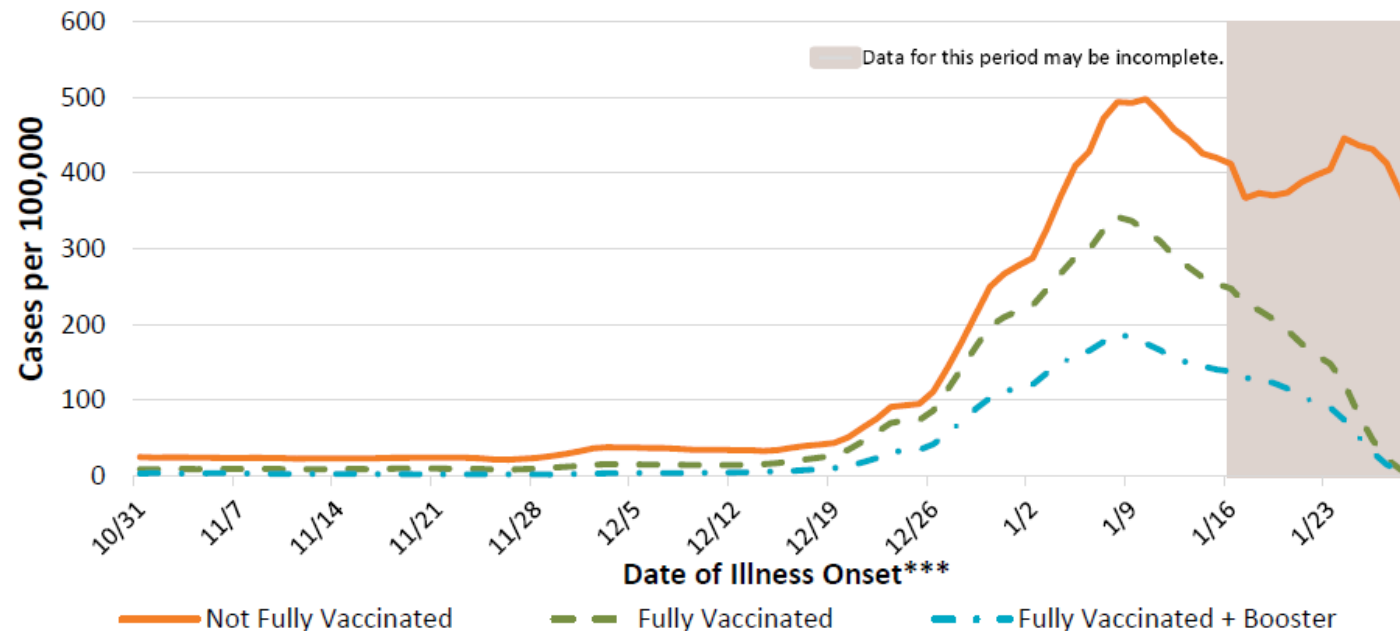
Fully Vaccinated†  
Case Rate  
(per 100,000)

253.4

Fully Vaccinated +  
Booster‡ Case Rate  
(per 100,000)

140.6

Figure 2. 7-Day Rolling Average COVID-19 Case Rate by Vaccination Status in San Diego County Residents in the Previous Three Months



\*Not fully vaccinated includes individuals with one dose of the two-dose series, no doses, or unknown vaccination status. Individuals who are not yet eligible for the vaccine are also included.

\*\*Cases who first tested positive (based on specimen collection date) greater than or equal to 14 days after receiving the final dose of COVID-19 vaccine.

\*\*\*If case did not have symptoms or illness onset date is unavailable, the earliest of specimen collection date, date of death, or date reported is used instead.

For more information see the [COVID-19 Watch](#) and the [Summary of Cases by Vaccination Status](#).

Prepared by the County of San Diego. Data through 01/29/2022, updated 02/02/2022

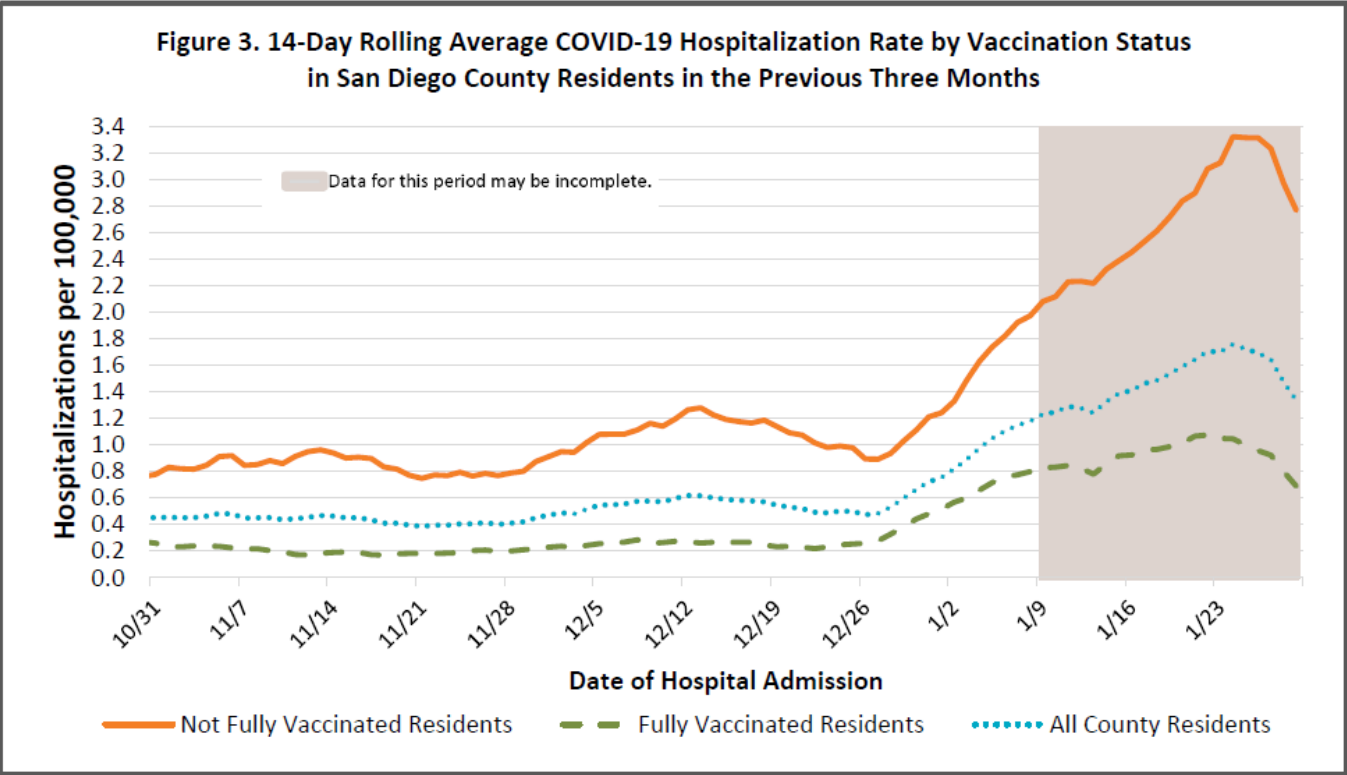
# COVID-19 HOSPITALIZATION RATE BY VACCINATION STATUS



Hospitalization rate for not fully vaccinated residents is **2 times higher** than fully vaccinated residents

→

Dates: 12/26/2021-1/8/2022		
Not Fully Vaccinated* Hospitalization Rate (per 100,000)	Fully Vaccinated ** Hospitalization Rate (per 100,000)	County Overall Hospitalization Rate (per 100,000)
1.98	0.80	1.18



\*Not fully vaccinated includes individuals with one dose of the two-dose series, no doses, or unknown vaccination status. Individuals who are not yet eligible for the vaccine are also included. \*\*Cases who first tested positive (based on specimen collection date) greater than or equal to 14 days after receiving the final dose of COVID-19 vaccine.

For more information see the [COVID-19 Watch](#) and the [Summary of Cases by Vaccination Status](#).

Prepared by the County of San Diego. Data through 01/29/2022, updated 02/02/2022.

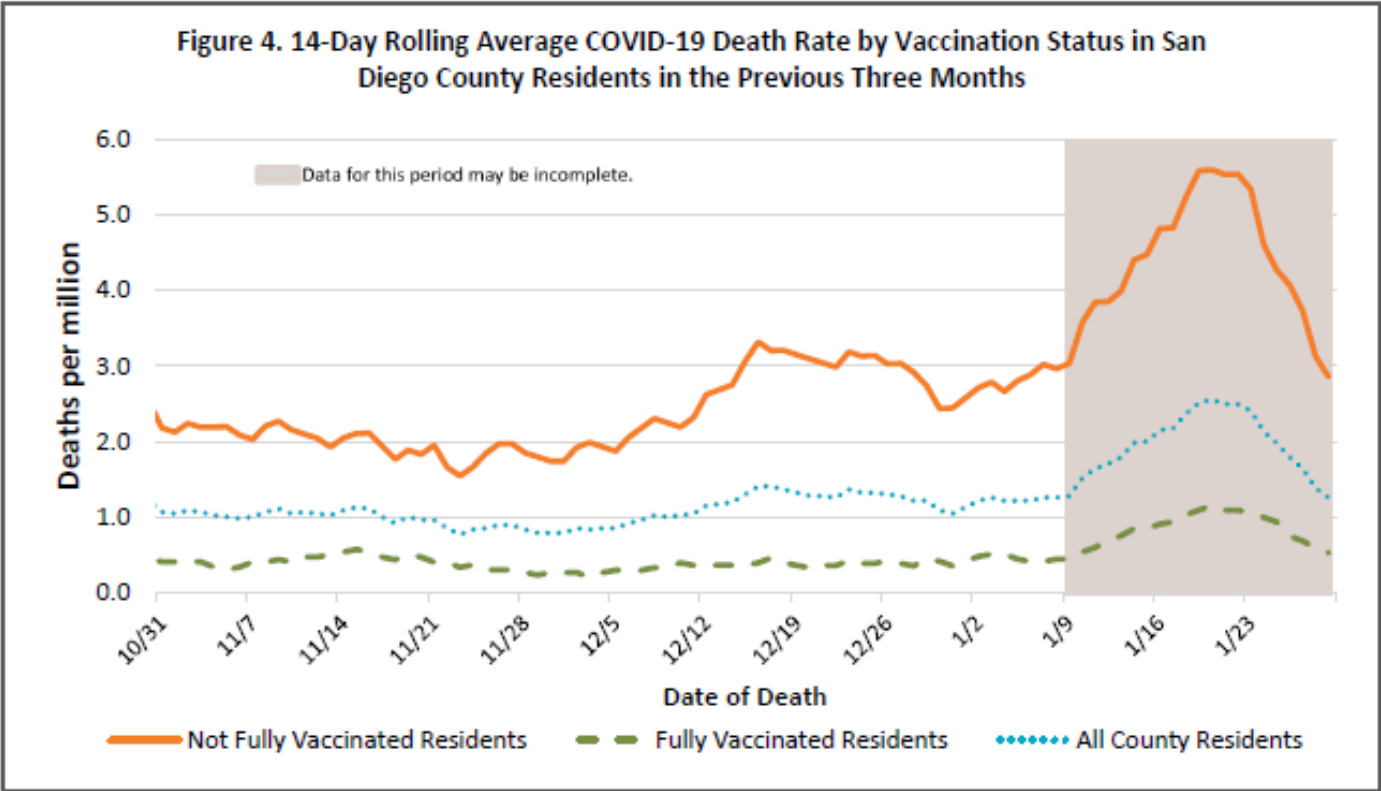
# COVID-19 DEATHS BY VACCINATION STATUS



LIVE WELL  
SAN DIEGO

Death rate for not fully vaccinated residents is **7 times higher** than fully vaccinated residents

Dates: 12/26/2021-1/8/2022		
Not Fully Vaccinated*	Fully Vaccinated **	County Overall
Death Rate (per million)	Death Rate (per million)	Death Rate (per million)
2.96	0.44	1.26



\*Not fully vaccinated includes individuals with one dose of the two-dose series, no doses, or unknown vaccination status. Individuals who are not yet eligible for the vaccine are also included.

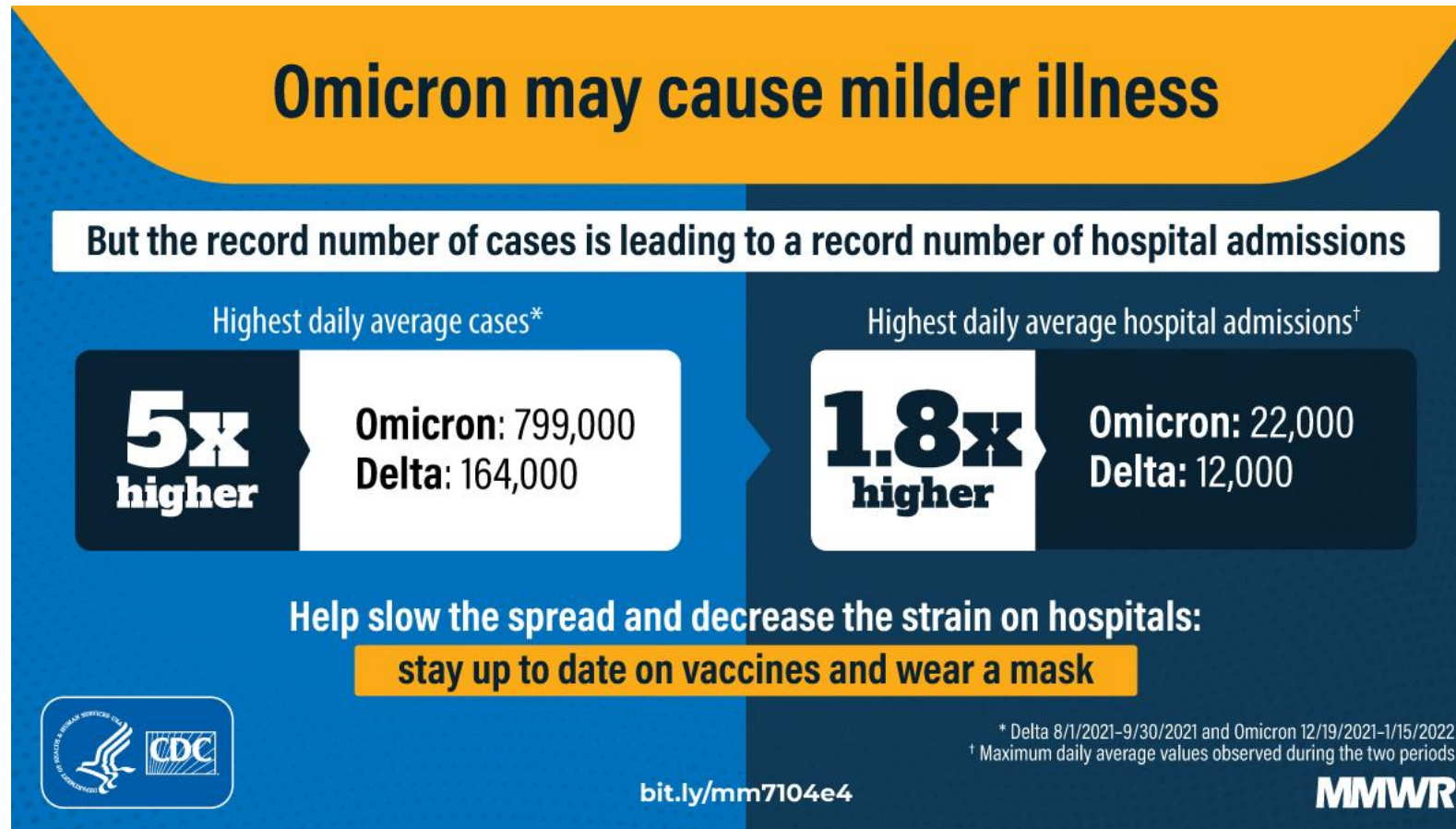
\*\*Cases who first tested positive (based on specimen collection date) greater than or equal to 14 days after receiving the final dose of COVID-19 vaccine. San Diego County Population from SANDAG 2019 Population Estimates (Prepared June 2020) = 3,351,784. The fully vaccinated population for each day is the cumulative number of county residents documented to have received the final dose of COVID-19 vaccine more than 14 days prior to that day. The not fully vaccinated population is the estimated total county population minus the fully vaccinated population. Fully vaccinated + booster death rates are not shown because there are few fully vaccinated + booster deaths to report; see Table 2 for counts. For more information see the [COVID-19 Watch](#) and the [Summary of Cases by Vaccination Status](#).

Prepared by the County of San Diego. Data through 01/29/2022, updated 02/02/2022.

# OMICRON TRENDS: DISEASE SEVERITY & HOSPITALIZATIONS



LIVE WELL  
SAN DIEGO



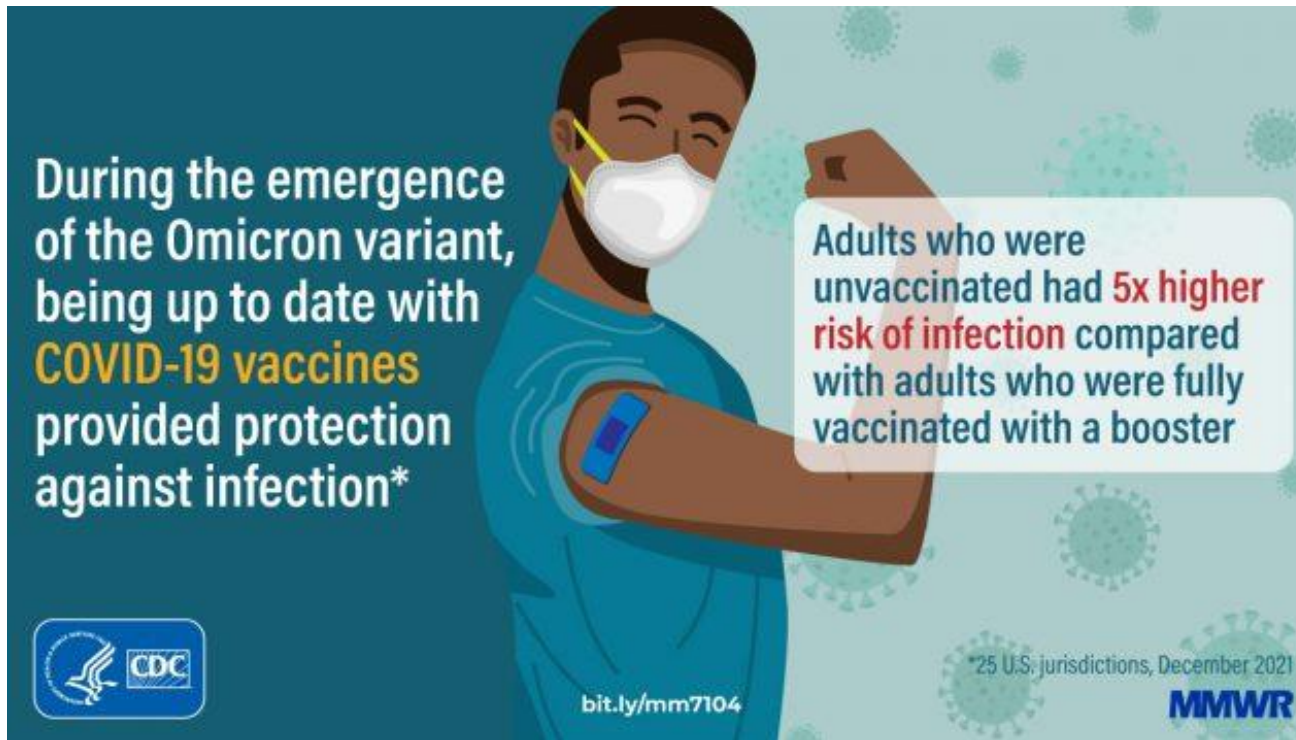
Trends in Disease Severity and Health Care Utilization During the Early Omicron Variant Period Compared with Previous SARS-CoV-2 High Transmission Periods — United States, December 2020–January 2022



# VACCINE EFFECTIVENESS DURING THE DELTA & OMICRON PERIODS

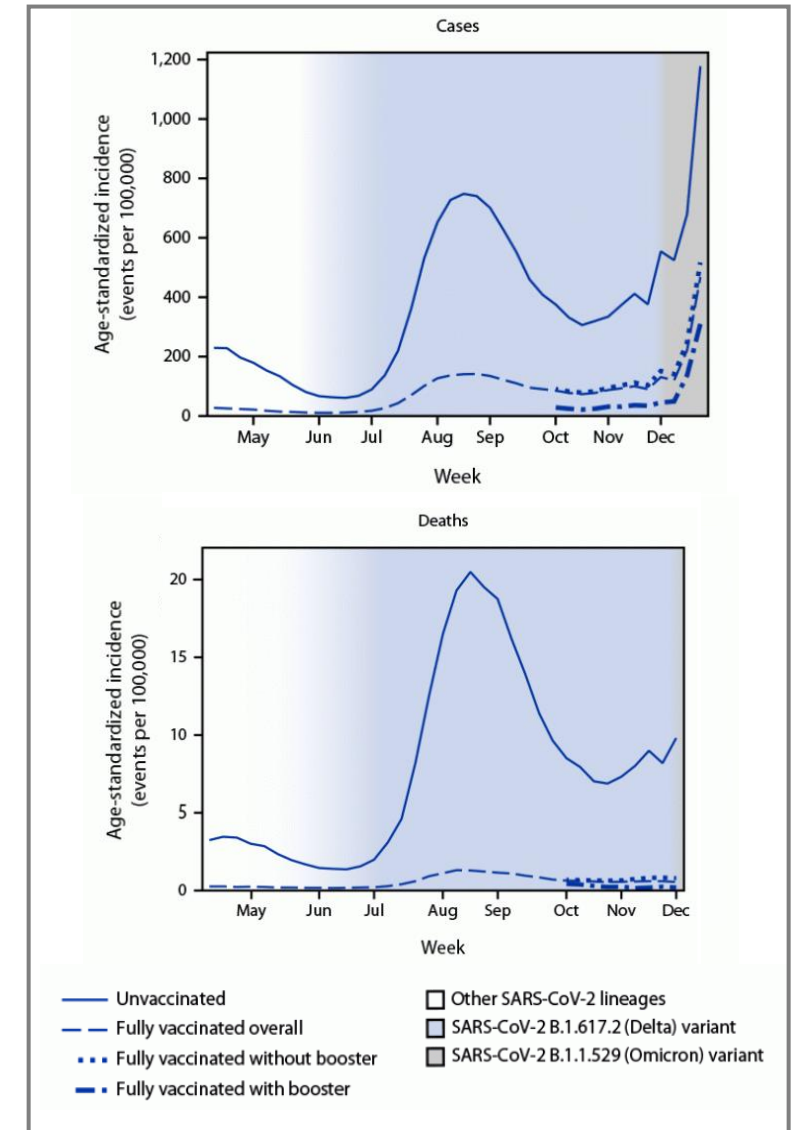


LIVE WELL  
SAN DIEGO



[COVID-19 Incidence and Death Rates Among Unvaccinated and Fully Vaccinated Adults with and Without Booster Doses During Periods of Delta and Omicron Variant Emergence — 25 U.S. Jurisdictions, April 4–December 25, 2021](#)

[Effectiveness of a Third Dose of mRNA Vaccines Against COVID-19–Associated Emergency Department and Urgent Care Encounters and Hospitalizations Among Adults During Periods of Delta and Omicron Variant Predominance — VISION Network, 10 States, August 2021–January 2022](#)



# MODERNA VACCINE: FULL FDA APPROVAL



LIVE WELL  
SAN DIEGO



## Joint Statement on the FDA's Approval of the Moderna COVID- 19 Vaccine for Individuals 18 Years of Age and Older

- On 2/1/22 the California Health and Human Services Agency and CDPH issued a joint statement on the **FDA approval of the Moderna COVID-19 Vaccine for individuals 18 years and older.**
- The vaccine meets the FDA's rigorous standards for safety, effectiveness, and manufacturing quality that are required for approval.
- The approved vaccine will be marketed as Spikevax. Spikevax is the same vaccine as the emergency use authorized Moderna COVID-19 vaccine.
- In updated studies, the vaccine was 93% effective in preventing COVID-19, and 98% effective in preventing severe disease.

# COVID-19 VACCINE BOOSTERS



LIVE WELL  
SAN DIEGO

Primary series COVID-19 vaccine product*	Age for vaccine booster (years)	Interval between final primary & booster dose	COVID-19 vaccines that may be given as a booster dose*
Pfizer-BioNTech	≥ 12	≥ 5 months	12-17: Pfizer-BioNTech 18+: Pfizer-BioNTech or Moderna (or Janssen/J&J)
Moderna	≥ 18	≥ 5 months	Pfizer-BioNTech or Moderna (or Janssen/J&J)
Janssen/J&J	≥ 18	≥ 2 months	Pfizer-BioNTech or Moderna (or Janssen/J&J)

\*Only Pfizer-BioNTech is authorized as a primary series or booster for people aged <18 years. For the prevention of COVID-19 in those aged ≥ 18 years, mRNA vaccines (Pfizer or Moderna) are preferred over the J&J vaccine for both primary series and booster doses.

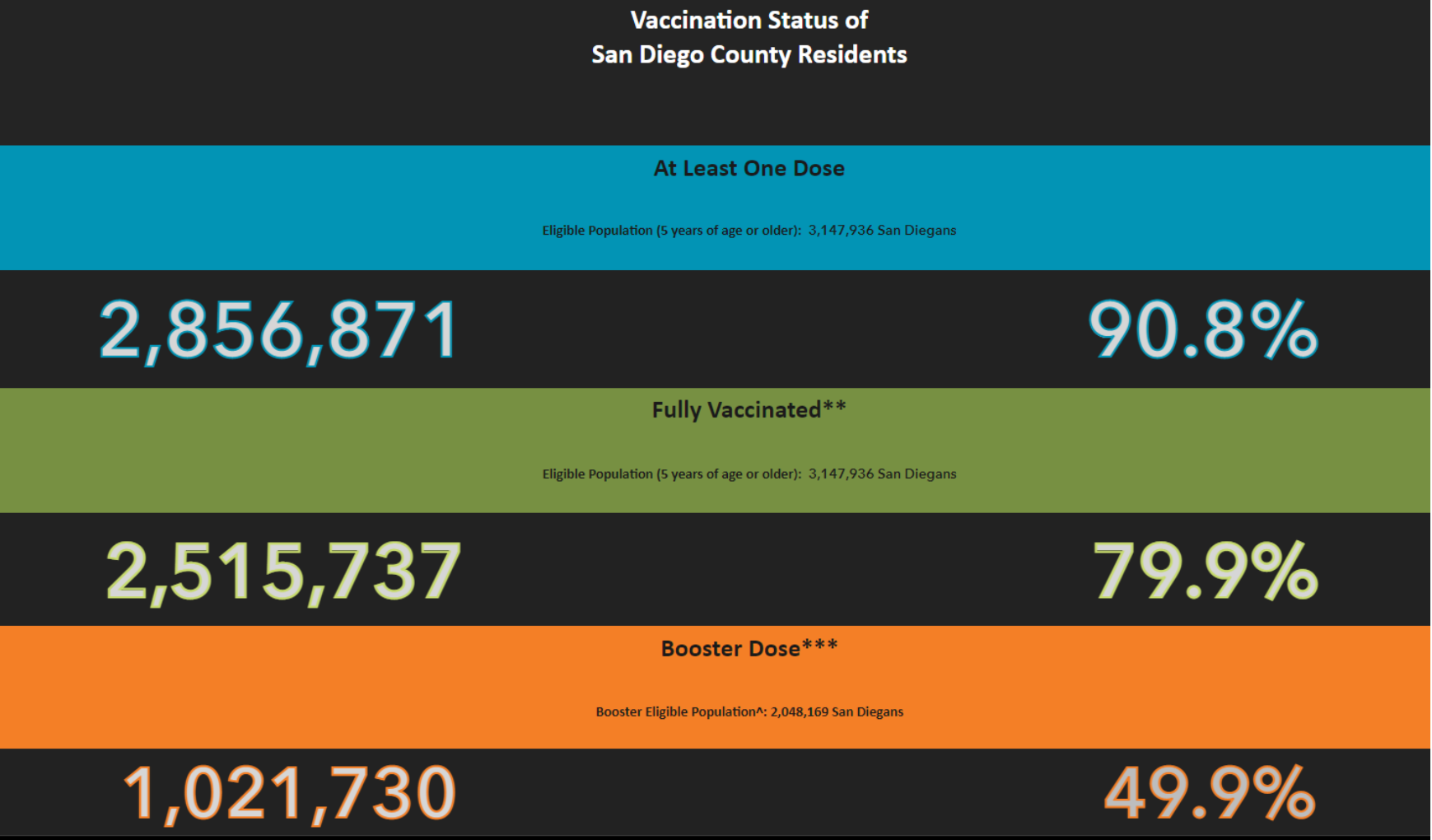
[COVID-19 Booster Vaccines](#)

[CDC Recommends Boosters for 12-15 Year Olds](#)

# VACCINATION IN SAN DIEGO COUNTY



LIVE WELL  
SAN DIEGO



[County of San Diego COVID-19 Vaccination Dashboard](#)

\*\*Fully Vaccinated is based on receiving either a single dose of Johnson & Johnson or both doses of Moderna or Pfizer, therefore completing the recommended vaccination series. However, individuals are not considered fully vaccinated until two weeks after completing the series, as defined by the Centers for Disease Control and Prevention (CDC). \*\*\*Booster doses includes only doses recorded in SDIR (excludes Veterans Affairs and Department of Defense). Beginning 12/22/2021, booster doses administered to 16-17 year age group are included. Beginning 1/12/2022, booster doses administered to 12-15 year age group are included. Eligible Population is San Diego County residents age 5 years and older, or 3,147,936 individuals. The total San Diego County population is 3,343,827.



# WHAT MASK SHOULD I WEAR?



LIVE WELL  
SAN DIEGO

## What Mask Should I Wear?

Along with getting vaccinated and boosted, experts recommend upgrading your mask if you want optimal protection.

No Protection



### No Mask or Improper Use

- Mask should fit over your nose and mouth and be snug against your face with no gaps
- Don't use masks that are damp, dirty or damaged
- Don't wear masks with exhalation valves, which allow virus particles to escape

Some Protection



### Cloth Masks

- Washable and reusable. Masks should be washed at least once a day or as soon as they become dirty
- Multiple layers of woven, breathable fabric



If you don't have access to a high filtration respirator mask, double up. Single layer masks, such as bandanas and gaiters, are less effective, so wear a cloth mask with multiple layers or wear a cloth mask over a surgical mask. Be sure your mask fits properly—nose wires improve fit.



### Surgical Masks

- Disposable, intended for one time use
- Multiple layers of non-woven material
- Provides protection against large droplets

Most Protection



### High Filtration Masks

(Respirators – N95, KN95, KF94)

- Varies by mask type, but reusable up to 5 times with proper care
- Filters up to 95% of particles in the air
- Seals tightly to the face when fitted properly (some facial hair can interfere with this seal)
- Designed and regulated to meet international standards. Check lists of trusted manufacturers from CDC and Project N95 to avoid counterfeit masks

[Shareable Graphic: What Mask Should I Wear?](#)

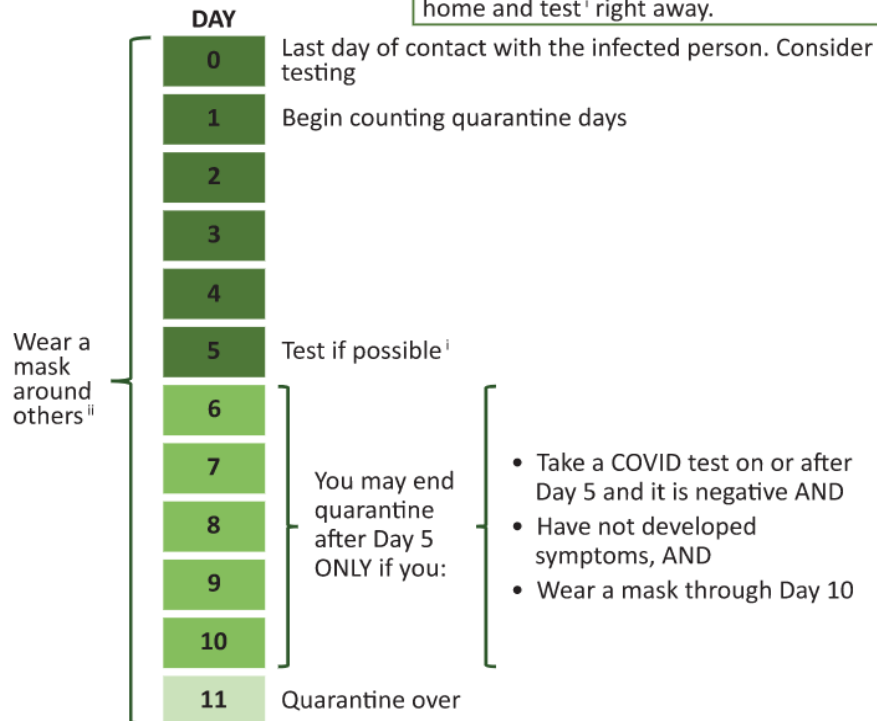
# QUARANTINE & ISOLATION



LIVE WELL  
SAN DIEGO

## QUARANTINE

If symptoms develop at any time, stay home and test<sup>i</sup> right away.



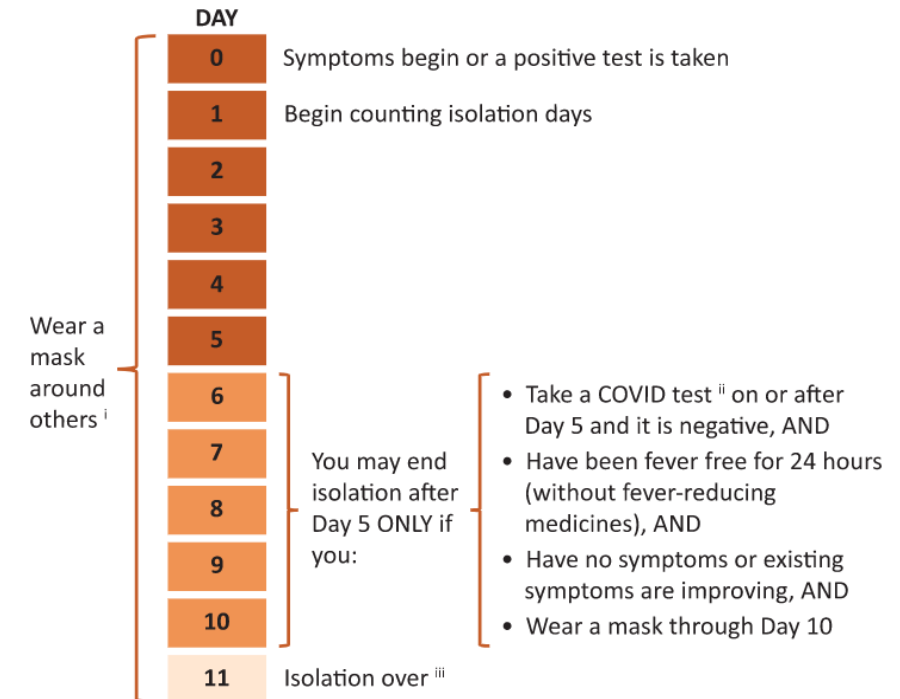
i. If test is positive, follow isolation instructions.

ii. Wear a well-fitting mask around others, even in your own home.

For more information, visit [ph.lacounty.gov/covidquarantine](https://ph.lacounty.gov/covidquarantine).

[LAC | DPH | COVID-19 Quarantine](#)

## ISOLATION



i. Wear a well-fitting masks around others, even in your own home.

ii. Antigen test preferred.

iii. If you still have a fever or your other COVID-19 symptoms are not improving, stay in isolation and talk with your doctor. If you are immunocompromised or had severe COVID-19, you may need to isolate for longer. Talk to your doctor about when you can be around others.

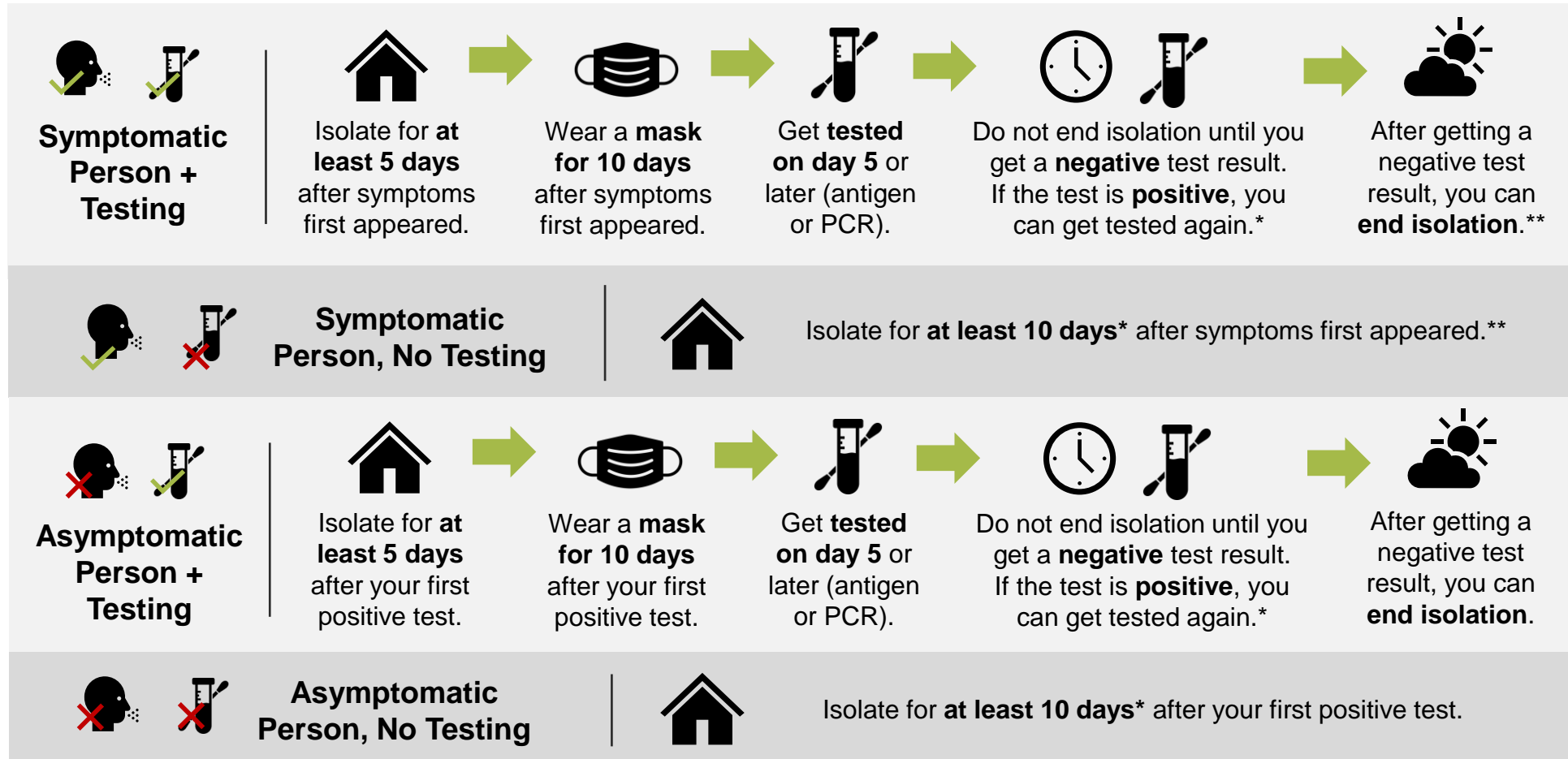
For more information, visit [ph.lacounty.gov/covidisolation](https://ph.lacounty.gov/covidisolation).

[LAC | DPH | COVID-19 Isolation](#)

# ISOLATION GUIDANCE



[County of San Diego: Health Officer Order - Isolation](#) Isolation is required for anyone who has, or is likely to have COVID-19, **regardless of vaccination status.**



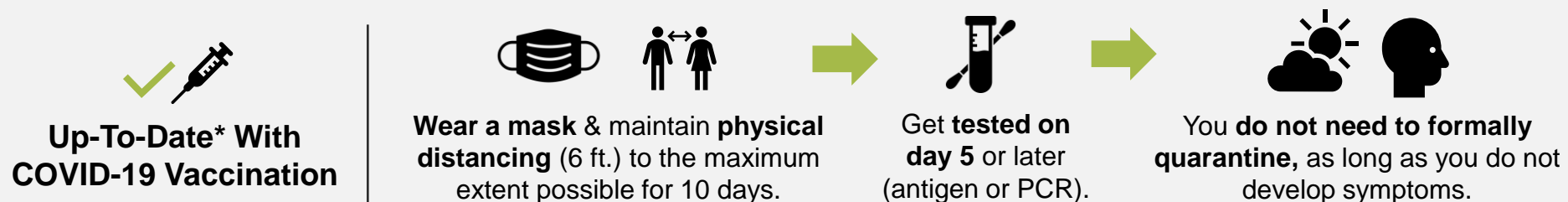
\*You do not need to get tested on day 10 to end isolation on day 11. \*\*Do not end isolation until at least 24 hours after last fever and until other symptoms have improved.

# QUARANTINE GUIDANCE



LIVE WELL  
SAN DIEGO

County of San Diego: Health Officer Order – Quarantine Quarantine is for people who have been in close contact with someone either diagnosed with COVID-19 or likely to have COVID-19 (COVID-19 patient).



If you develop symptoms or test positive for COVID-19, isolate and contact your healthcare provider and/or local public health department and seek testing if you have not already.

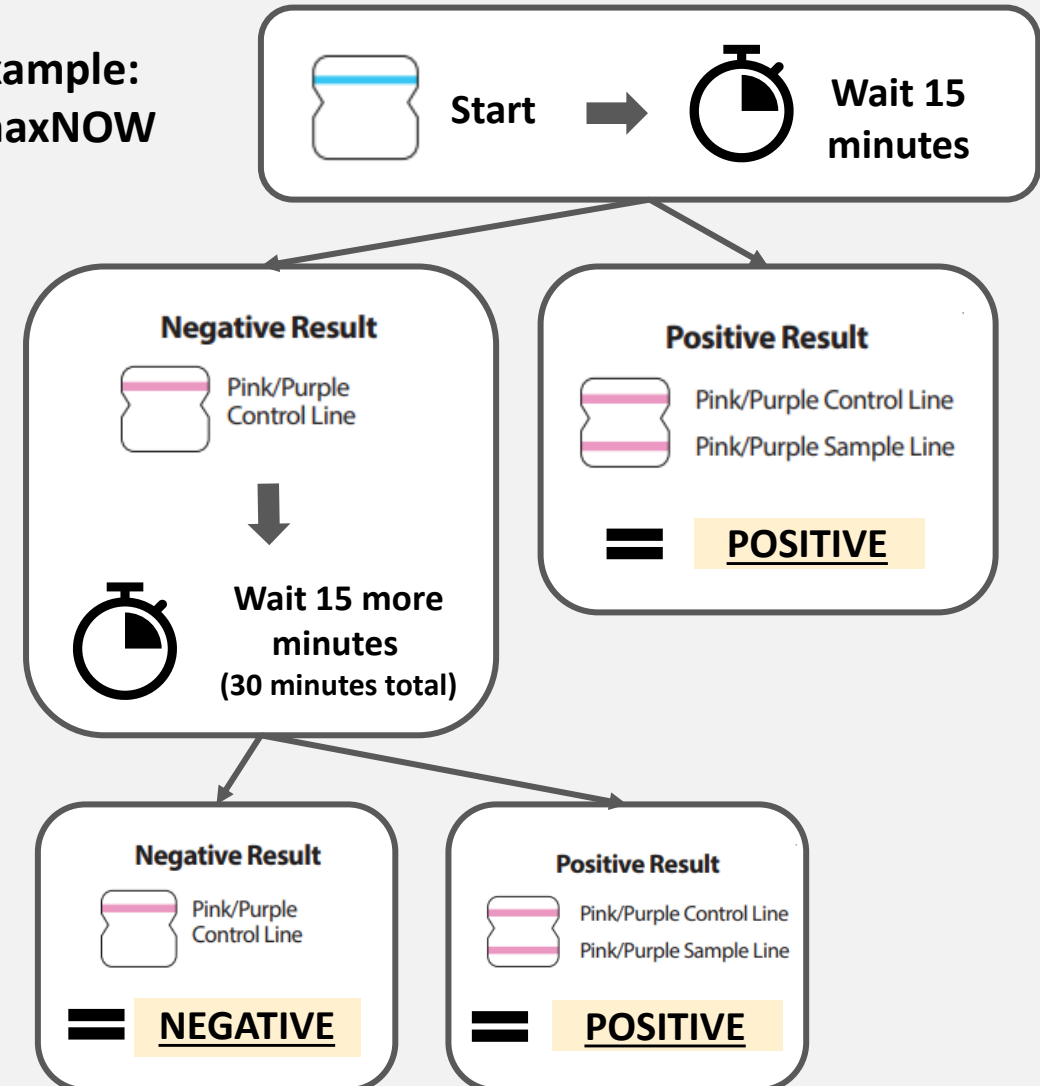
\*People are considered current and up-to-date  $\geq 2$  weeks after the second dose in a 2-dose series (Pfizer-or Moderna), or  $\geq 2$  weeks after they have received a single-dose vaccine (Johnson & Johnson). However, if more than 6 months has passed since receiving the second dose in a 2-dose series (Pfizer or Moderna), or more than 2 months from a 1-dose series (J&J), a booster is required to be considered current and up-to-date.

# RAPID ANTIGEN TESTS



- When using a rapid antigen test kit, wait the **full window** to read the result before determining it is **negative**.
  - For example, the BinaxNOW test kits instruct users to read the results after 15-30 minutes, so you should wait the **full 30 minutes** before determining it is negative.
- If, after the minimum amount of time, your test reads **positive**, you do not need to wait any longer.

## Example: BinaxNOW



# MONOCLONAL ANTIBODIES



LIVE WELL  
SAN DIEGO



## Who can benefit from monoclonal antibodies?

Treatment	Prevention
<ul style="list-style-type: none"><li>• People who have a positive test for COVID-19 and have mild to moderate symptoms, <b>AND</b></li><li>• Have had COVID-19 symptoms for less than 10 days, <b>AND</b></li><li>• Are at <u>high-risk</u> of getting very sick from COVID-19<ul style="list-style-type: none"><li>• Examples include: 65 years of age or older, obese, pregnant, diabetes, heart disease, high blood pressure, &lt; 1 year of age</li></ul></li></ul>	<ul style="list-style-type: none"><li>• People who have been in <u>close contact</u> with someone with a positive test for COVID-19 <b>OR</b> at high risk of exposure, <b>AND</b></li><li>• Are not fully vaccinated <b>OR</b> not expected to mount an immune response</li></ul>

Clinical studies show **≥ 70 % prevention** of hospitalization and death with monoclonal antibody treatment, and **≥ 70 % prevention** of transmission with monoclonal antibody prevention.

Sotrovimab does appears to  
be effective against Omicron



# MARC LOCATIONS ARE AT CAPACITY



LIVE WELL  
SAN DIEGO

**Patients should FIRST contact their physician to see if they meet EUA and to schedule treatment with their provider / Health System**

- **High-risk patients who meet the criteria** can call **(619) 685-2500** to make an appointment.
- For additional information visit:  
[www.sandiegocounty.gov/COVIDHealthProfessionals](http://www.sandiegocounty.gov/COVIDHealthProfessionals)
- Email us at: [CovidTreatment@sdcounty.ca.gov](mailto:CovidTreatment@sdcounty.ca.gov)
- If a skilled nursing facility is interested in monoclonal antibody treatment, contact the Mobile Monoclonal Antibody Administration Team at [mcsdnursingmabinfusion.hhsa@sdcounty.ca.gov](mailto:mcsdnursingmabinfusion.hhsa@sdcounty.ca.gov)



## MARC LOCATIONS

MARC at  
Vista Community Clinic  
Vista

MARC at  
San Ysidro Health  
**OPEN SATURDAYS**  
Chula Vista

MARC at  
Clairemont Friendship  
Center  
**OPEN SATURDAYS**  
Clairemont

Family Health Centers of  
San Diego  
Hillcrest & Chula Vista



# CLOSING

---







## STAY CONNECTED!

- For COVID-19 questions and resources, please email: [COVID-questions@sdcounty.ca.gov](mailto:COVID-questions@sdcounty.ca.gov)
- For CFBO Sector questions and resources, please email: [LiveWellCFBO@sdcounty.ca.gov](mailto:LiveWellCFBO@sdcounty.ca.gov)
- [Community-Based Organizations Website](#)
- [Faith-Based Organizations Website](#)
- [Rural Communities Website](#)
- [Sign up for email updates](#)

