



CORONAVIRUS
DISEASE 2019 (COVID-19)

WEEKLY UPDATE

LONG-TERM CARE AND RESIDENTIAL CARE FACILITIES

Wednesday, July 15, 2020

Greetings Long-Term Care and Residential Care Facilities of San Diego County,

Below information is the latest guidance and resources from state and federal organizations, including 5 new All Facilities Letters (AFLs), new plans for testing from the state, and a new 24/7 advice line that can connect individuals with a nurse to answer questions about COVID-19 from the Department of Health Care Services. The **new** All Facilities letters cover information about:

- updated visitor limitations guidance (AFL 20-38.3)
- suspension of professional certification requirements for Certified Nurse Assistants and Home Health Aides (AFL 20-35.1 and 20-49.1) and suspension of regulatory enforcement of Adult Day Health Care Centers Requirements (AFL 20-34.2), and
- reporting requirements for Public Safety Power Shutoff power outages (AFL 20-59).

Also, please see **new** updates from the County of San Diego, including:

- a summary of the latest Public Health Order updates,
- new technology how-to resources,
- request for Plasma donation,
- a new small business relief grant available, and
- a time-sensitive employment opportunity with the County.

See details below.

As we continue to give updates from our County public health perspective, please be aware that you should always confer with your licensing entity for approval of any operational changes.

If you missed any recent email updates from this sector, [review them here](#). For additional information and resources, please see our website www.coronavirus-sd.com/LTC.

Thank you for your continued efforts and partnership with the County of San Diego!



Announcements and News



Updates from the California Department of Public Health

CDPH publishes news and All Facilities Letters (AFLs) regularly. If you would like to receive email notifications of AFLs, please submit your request to LNCPolicy@cdph.ca.gov. See the newly released advisories below:

Letter to All Facilities – July 13, 2020 **NEW!**

Visitor Limitations Guidance (this AFL supersedes AFL 20-38.2)

This AFL notifies all facilities of updated visitor guidelines for pediatric patients, patients in labor and delivery, neonatal intensive care unit (NICU) patients, pediatric intensive care unit patients (PICU) patients, and patients at end-of-life and patients with physical, intellectual, and/or developmental disabilities and patients with cognitive impairments. Health facilities may permit a support person to accompany a patient for whom a support person has been determined to be essential to the care of the patient (medically necessary), including patients with physical, intellectual, and/or developmental disabilities and patients with cognitive impairments. In addition, this AFL has been updated to clarify that long-term care facilities and hospitals may permit students obtaining their clinical experience as part of an approved nurse assistant, vocational nurse, or registered nurse training program into the facility if they meet the CDC guidelines for healthcare workers.

[Click here to read AFL 20-38.3](#)

Letter to All Facilities – July 13, 2020 **NEW!**

Public Safety Power Shutoff Power Outage Reporting

This AFL notifies health care facilities that California energy companies may proactively turn off electric power to any electric customer in California as a part of a Public Safety Power Shutoff (PSPS) event. Facilities should ensure their local energy company is provided with the most up-to-date contact information to receive outage alerts. PSPS events, when used, are regarded as an unusual occurrence. Facilities must report the unusual occurrence of a PSPS event to the California Department of Public Health (CDPH), Licensing and Certification (L&C) Program. Facilities must report PSPS power outages, generator and fuel status, any impact to patients, and any resource needs to the local L&C district office (DO), local public health officer, and Medical Health Operational Area Coordinator (MHOAC).

[Click here to read AFL 20-59](#)

Letter to All Facilities – July 10, 2020 **NEW!**

Suspension of Professional Certification Requirements for Certified Nurse Assistants (CNAs) (This AFL supersedes AFL 20-35)

This AFL notifies all facilities of a temporary waiver of specified statutory and regulatory requirements for CNAs due to the state of emergency related to the COVID-19 outbreak and has been updated to provide a deadline for CNAs to complete Live Scan submission requirements following the resumption of Live Scan services.

[Click here to read AFL 20-35.1](#)

Letter to All Facilities – July 10, 2020 **NEW!**

Suspension of Professional Certification Requirements for Home Health Aides (HHAs) (This AFL supersedes AFL 20-49)

This AFL notifies all facilities of a temporary waiver of specified statutory and regulatory requirements for HHAs due to the state of emergency related to the COVID-19 outbreak and has been updated to provide a deadline for HHAs to complete Live Scan submission requirements following the resumption of Live Scan services.

[Click here to read AFL 20-49.1](#)

Letter to Adult Day Health Care Centers – July 10, 2020 **NEW!**

Suspension of Regulatory Enforcement of Specified Adult Day Health Care Centers (ADHCs) Requirements (This AFL supersedes AFL 20-34.1)

This AFL notifies ADHCs of a temporary waiver of specified regulatory requirements due to the state of emergency related to the COVID-19 outbreak. This AFL has been updated to extend the waiver until March 1, 2021 and has been updated to provide a deadline for

ADHCs to complete Live Scan submission requirements following the resumption of Live Scan services.

[Click here to read AFL 20-34.2](#)

[Click here to see a full list of recent AFLs](#)



Recent Updates from the California Health Alert Network

California Health and Human Services Agency Announces New Plans for COVID-19 Testing – July 14, 2020 **NEW!**

California Health and Human Services Secretary Dr. Mark Ghaly today announced new plans for COVID-19 testing in California, including updated testing guidance, new requirements for health plans to cover testing, and the new co-chairs of the state's COVID-19 Testing Task Force.

[Click here to read the full press release.](#)



Recent Update from the Department of Health Care Services

Free 24/7 Medi-Nurse Call Line Launches for COVID-19 Questions **NEW!**

The California Department of Health Care Services has launched a new 24/7 advice line for individuals without health care coverage, or for individuals with Medi-Cal but don't have a regular doctor, California's new nurse advice line can help that can connect individuals with a nurse to answer questions about COVID-19, including symptoms, testing, and treatment; and connect individuals with resources. The Medi-Nurse line is (877) 409-9052. It is recommended that providers share this resource with their clients. For more information about the line, or resources to share, [visit their website](#).



Updates from the County of San Diego

Public Health Order Update **NEW!**

[County of San Diego COVID-19 Public Health order has been updated](#), effective July 7 through July 27. These updates align the County's public health order with the State's public health mandate for counties with an increase in COVID-19 rates.

- Dine-in sections of all restaurants, pubs, bars, etc. must close. Outdoor dining and order pickup are allowed. **NOTE:** Long-term care facilities' indoor dining areas **do not** have to close, but should follow all precautionary guidelines as outlined by their licensing entities.
- Bars, Breweries, pubs, and other establishments that do not serve food must close all operations, even if it is outdoors.
- Indoor functions of all recreational facilities must close.
- Update on face covering requirement and face covering guidance for customers at restaurants.
- Places of Worship (wedding ceremonies may be conducted but not receptions).
- Updated description of temperature and health screenings of employees at essential and reopened businesses.

To view the full updated Public Health Order, click [here](#).

New How-To Technology Videos **NEW!**

The County of San Diego is committed to providing the support and information necessary to ensure that members of the community have access to the resources they need to stay healthy, safe and thriving during COVID-19. How-To Technology Videos have been created to help teach you and your loved ones how to stay connected and get the things you need using technology, such as your smartphone, tablet, or computer. Currently, there are videos on how to order food from restaurants and how to order groceries using your phone. We are still in the process of producing more, so stay tuned on our [Live Well @ Home website](#) or on our [Live Well San Diego YouTube channel!](#)

Plasma Donation from Recovered COVID-19 Patients are Needed **NEW!**

Local hospital requests for COVID-19 convalescent plasma (CCP) spiked in the last week and current inventory will not meet demand over the coming days.

Recovered COVID-19 patients are needed to meet demand. While COVID-19 has no proven treatment, plasma taken from those who have recovered may help patients currently fighting the virus because the plasma has developed antibodies against the virus.

Individuals can donate convalescent plasma if they have a confirmed positive laboratory test and no symptoms for the last 28 days. People who test positive with a COVID-19 antibody test can also donate. San Diego Blood Bank has created a form where people can submit their contact information to be qualified for convalescent plasma donation at <http://www.sandiegobloodbank.org/donateplasma>.

Small Business Stimulus Grant Program – Please Share NEW!

Applications are now open for the Small Business Stimulus Grant Program from the County of San Diego to provide economic assistance to local small business and restaurant owners suffering financial losses due to COVID-19. Funded by Board of Supervisors allocated federal CARES Act funding, the goal of this program is to provide a lifeline grant to many for-profit and nonprofit businesses to get them open, keep them open, and help prevent more from going out of business. Financial assistance will be allocated to eligible, qualified small businesses, restaurants, and nonprofit entities with final award recommendations made by individual district offices based on the availability of funds, program guidelines, and the submission of all required information and supporting documentation. To qualify businesses must have: 100 or fewer employees, headquarters in San Diego County, minimum 1-year operating history as of Feb. 14, 2020, and documentation of financial hardship because of COVID-19.

Businesses are urged to apply early. Applications are available now through Oct. 16 – subject to available funding. Please share this information with your networks as appropriate and find social media graphics attached.

For more information and to access the application, visit <https://sandiegocounty.gov/stimulusgrant>.

Time-sensitive Employment Opportunity with the County – Please Share NEW!

Due to the urgent need for Case Investigators, the County of San Diego will begin accepting applications starting Wednesday, July 15, at 8:00 a.m. through Monday, July 20, 11:59 p.m.

Contact tracing and investigation plays an important role in public health responses to infectious disease. By tracing the contacts of COVID-19 confirmed individuals, testing them for infection, treating the COVID-19 confirmed and tracing their contacts in turn, public health aims to reduce infections in the population. For the COVID-19 response, a strong network of Temporary Case Investigators are needed to support individuals with confirmed COVID-19 exposure.

Bilingual applicants are encouraged to apply.

Temporary Case Investigators work will be limited to COVID 19 investigations and incumbents must be able to travel to, and participate in, multiple in-person trainings in San Diego County, be able to report to a County worksite with short notice, and be able to work 40 hours a week, potentially up to 6-9 months. Individuals will perform most of the work from home and should be able to work weekdays and weekends as case investigation is a seven (7) day operation. Temporary Case Investigators may be required to use their own phone, computer (MacOS or Windows, no tablets), and/or internet services.

Interested persons can learn more about the position and apply at sdcounty.ca.gov/hr.



Join the *Live Well San Diego* Fitness Challenge and virtual 5K!

While we wait for a coronavirus vaccine, eating well, exercising and managing stress is an important way to stay healthy and boost your immune system. To help, Live Well San Diego invites you to participate in the [virtual 2020 Live Well San Diego 5K & Fitness Challenge](#), and it's FREE!

There is FREE registration

FREE fitness events

FREE race swag (hat – while supplies last!)

The 5K Fitness Challenge will kick-off on **July 13th** and finish on **August 16th** with a 5K Virtual Race. Join the online fitness community through the Daily Endorphin platform for a little friendly competition and to help keep your step count on track and keep you in-the-know. [Click here to learn more.](#)



Recent Updates from the California Department of Social Services (CDSS)

The Community Care Licensing Division (CCLD) of CDSS publishes Provider Information Notices (PINs) to communicate important license related information to CCLD-licensed providers. The local CDSS San Diego

Adult and Senior Care office can be reached at (619) 767-2300, or CCLASCPSanDiegoRO@dss.ca.gov.

Updated Guidance on Testing, Modification of Visitation Guidelines, Infection Prevention and Control, and Face Coverings in Adult and Senior Care Facilities – June 26, 2020

Provides updated guidance to Adult and Senior Care (ASC) licensees related to the critical role of testing for COVID-19, modification of visitor guidelines, guidance for vigilant adherence to infection control and prevention practices to prevent the transmission of COVID-19 in ASC facilities, and mandated use of face coverings.

[Click here to access PIN 20-23-ASC](#)

Note: There are no new PINs. [Click here to browse the full list of recent PINs.](#)



Upcoming Telebriefings



Telebriefing for **Older Adult and Disability Service Providers**

WHEN: Friday, July 17, 2020 at 4:00 p.m.

Please [pre-submit your questions at least 24 hours before the telebriefing](#), so that they can be answered on the call. Participants will also have the opportunity to ask questions during the call through the online chat feature on the Zoom platform. [Please click here for more information, including access link and call-in option.](#)

This Week!

**Friday, July 17
at 4:00pm**



Telebriefing for **Long-Term Care and Residential Care Facilities**

WHEN: Friday, July 24, 2020 at 4:00pm

Please [pre-submit your questions in advance here](#). All participants will be muted during the meeting. Participants will have the opportunity to ask questions during the call through the online chat feature on the Zoom platform.

**Friday, July 24
at 4:00pm**

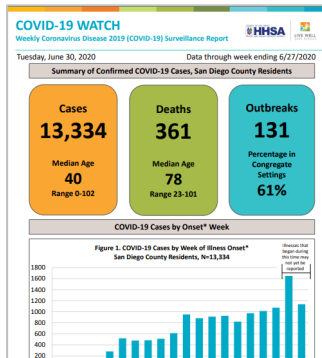
Join the telebriefing at the specified time and date using one of the options below:

- Option 1 | Computer (preferred):
 - Click on the following link <https://zoom.us/j/218631109>
 - Meeting ID: 218 631 109.
 - If you have any difficulties accessing the participant link, please use option 2.
- Option 2 | Phone:
 - Dial-In Number: 1 (669) 900-6833 or 1 (346) 248-7799
 - Meeting ID: 218 631 109.

[Visit the Long-Term Care and Residential Care Facilities Sector Support webpage to learn more.](#)



Ongoing Programs, Services, and Resources



County of San Diego COVID-19 Dashboard and Weekly “COVID-19 Watch” Report

The County of San Diego publishes a weekly surveillance report on the coronavirus-sd.com website called “COVID-19 Watch”.

[Click here to review the report.](#)



Additionally, visualize and track data real time on the interactive web-based dashboard developed by the County of San Diego Epidemiology and Immunization Services Branch.

[See the dashboard here.](#)



Latest San Diego County Public Health Order

The latest updates to the local Public Health Order included additional key items for essential businesses still in operation.

[Read the latest order.](#)



Recent Email Updates and Resources from the Long-Term Care and Residential Care Sector

- [July 8, 2020 Update](#)
- [July 1, 2020 Update](#)
- [June 24, 2020 Update](#)
- [June 17, 2020 Update](#)

[Click here to browse all past email updates.](#)

Additionally, check out resources and state guidance the Long-Term Care and Residential Care Facilities homepage:
www.coronavirus-sd.com/LTC.



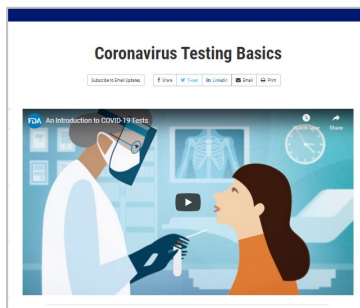
211 San Diego

- For health or testing related questions, contact your healthcare provider. For general questions about COVID-19, information about community resources, or if you are uninsured, call **2-1-1 San Diego**.
- [Click here](#) for free COVID-19 testing information.
- [2-1-1 San Diego Flyer](#) (English & Spanish)



COVID-19 Downloadable Resources and Materials for Your Facility

- [Find FAQs, posters, videos, and other materials.](#)



Coronavirus Testing Basics from the U.S. Food and Drug Administration

The U.S. Food and Drug Administration (FDA) published a resource to help educate about the different types of coronavirus tests, including approximate processing time, what to expect, and whether or not a re-test is generally recommended.

[Click here to view the resource.](#)



Guidance from the Centers for Disease Control and Prevention

- [Guidelines for Group Homes for Individuals with Disabilities](#)
- [Guidelines for Direct Service Providers of Individuals with Disabilities](#)
- [Key Strategies to Prepare for COVID-19 in Long-Term Care Facilities \(LTCFs\)](#)
- [Symptoms of Coronavirus](#)
- [Considerations When Preparing for COVID-19 in Assisted Living Facilities](#)
- [Considerations for Memory Care Units in Long-term Care Facilities](#)

For general information about COVID-19 from the CDC, please visit www.cdc.gov/coronavirus.



General COVID-19 Information from State and Federal Organizations

- [California Department of Public Health, Immunization Branch – COVID-19](#)
- [Centers for Disease Control and Prevention – COVID-19](#)
- [California Department of Social Services – COVID 19](#)
- [World Health Organization – Coronavirus Disease \(COVID-19\) Outbreak](#)



Stay Connected



For questions related to long-term care and residential care facilities, please email: COVID-LTC@sdcounty.ca.gov.



Get the latest information about what's happening across the county with COVID-19.



Text **COSD COVID-19** to **468-311**

to get text alert updates from the County of San Diego.

