



CORONAVIRUS  
DISEASE 2019 (COVID-19)

## WEEKLY UPDATE

### LONG-TERM CARE AND RESIDENTIAL CARE FACILITIES

Wednesday, July 22, 2020

Greetings Long-Term Care and Residential Care Facilities of San Diego County,

Below information is the latest guidance and resources from state and federal organizations, including a **new**:

- All Facilities Letter (AFL) about Dialysis transportation for COVID-19 positive residents,
- AFL about a weekly reporting requirement for SNFs regarding surveillance/response-driven testing, and
- Public Information Notice (PIN) regarding an informational call scheduled for **tomorrow**, July 23, 2020, to provide guidance to licensees on planned activities during COVID-19.

See details below.

As we continue to give updates from our County public health perspective, please be aware that you should always confer with your licensing entity for approval of any operational changes.

If you missed any recent email updates from this sector, [review them here](#). For additional information and resources, please see our website [www.coronavirus-sd.com/LTC](http://www.coronavirus-sd.com/LTC).

Thank you for your continued efforts and partnership with the County of San Diego!



## Announcements and News



### Updates from the California Department of Public Health

CDPH publishes news and All Facilities Letters (AFLs) regularly. If you would like to receive email notifications of AFLs, please submit your request to [LNCPolicy@cdph.ca.gov](mailto:LNCPolicy@cdph.ca.gov). See the newly released advisories below:

Letter to Skilled Nursing Facilities – July 21, 2020 **NEW!**

#### **Dialysis Transportation for COVID-19 Positive Residents**

This AFL provides recommendations to skilled nursing facilities (SNFs) for transporting COVID-19 positive residents to dialysis clinics for treatment.

[Click here to read AFL 20-61](#)

Letter to Skilled Nursing Facilities – July 17, 2020 **NEW!**

#### **SNF Weekly Reporting of COVID-19 Surveillance/Response-Driven Testing**

This AFL requires SNFs to report COVID-19 surveillance/response-driven testing data to the California Department of Public Health (CDPH) weekly via an online survey in the [COVID-19 SNF Survey Hub](#). This reporting is to ensure that California has the information necessary to respond to the COVID-19 outbreak.

[Click here to read AFL 20-60](#)

Letter to All Facilities – July 13, 2020

#### **Visitor Limitations Guidance** (this AFL supersedes AFL 20-38.2)

This AFL notifies all facilities of updated visitor guidelines for pediatric patients, patients in labor and delivery, neonatal intensive care unit (NICU) patients, pediatric intensive care unit patients (PICU) patients, and patients at end-of-life and patients with physical, intellectual, and/or developmental disabilities and patients with cognitive impairments. Health facilities may permit a support person to accompany a patient for whom a support person has been determined to be essential to the care of the patient (medically necessary), including patients with physical, intellectual, and/or developmental disabilities and patients with cognitive impairments.

[Click here to read AFL 20-38.3](#)

Letter to All Facilities – July 13, 2020

### **Public Safety Power Shutoff Power Outage Reporting**

This AFL notifies health care facilities that California energy companies may proactively turn off electric power to any electric customer in California as a part of a Public Safety Power Shutoff (PSPS) event. Facilities should ensure their local energy company is provided with the most up-to-date contact information to receive outage alerts. PSPS events, when used, are regarded as an unusual occurrence. Facilities must report the unusual occurrence of a PSPS event to the California Department of Public Health (CDPH), Licensing and Certification (L&C) Program. Facilities must report PSPS power outages, generator and fuel status, any impact to patients, and any resource needs to the local L&C district office (DO), local public health officer, and Medical Health Operational Area Coordinator (MHOAC).

[Click here to read AFL 20-59](#)

[Click here to see a full list of recent AFLs](#)



### **Recent Updates from the California Department of Social Services (CDSS)**

The Community Care Licensing Division (CCLD) of CDSS publishes Provider Information Notices (PINs) to communicate important license related information to CCLD-licensed providers. The local CDSS San Diego Adult and Senior Care office can be reached at (619) 767-2300, or

[CCLASCPSanDiegoRO@dss.ca.gov](mailto:CCLASCPSanDiegoRO@dss.ca.gov).

### **Informational Call Regarding COVID-19: Planned Activities: Social vs. Physical Isolation in Adult and Senior Care Facilities – July 16, 2020 **New!****

This PIN announces an informational call scheduled for July 23, 2020 to provide guidance to licensees on planned activities during COVID-19. The Community Care Licensing Division (CCLD), ASC Program encourages licensees to participate in an informational call on planned activities: Social vs. Physical Isolation in ASC facilities during the COVID-19 pandemic. The call will feature a panel discussion and will include an opportunity to ask questions.

Thursday, July 23, 2020 – **Tomorrow**

1:00 – 3:00 PM

Toll-Free Call-In Number: 888-889-4956

[Click here to access PIN 20-26-ASC](#)

**Updated Guidance on Testing, Modification of Visitation Guidelines, Infection Prevention and Control, and Face Coverings in Adult and Senior Care Facilities – June 26, 2020**

Provides updated guidance to Adult and Senior Care (ASC) licensees related to the critical role of testing for COVID-19, modification of visitor guidelines, guidance for vigilant adherence to infection control and prevention practices to prevent the transmission of COVID-19 in ASC facilities, and mandated use of face coverings.

[Click here to access PIN 20-23-ASC](#)

[Click here to browse the full list of recent PINs.](#)



**Recent Update from the Department of Health Care Services**

**Free 24/7 Medi-Nurse Call Line Launches for COVID-19 Questions**

The California Department of Health Care Services has launched a new 24/7 advice line for individuals without health care coverage, or for individuals with Medi-Cal but don't have a regular doctor, California's new nurse advice line can help that can connect individuals with a nurse to answer questions about COVID-19, including symptoms, testing, and treatment; and connect individuals with resources. The Medi-Nurse line is (877) 409-9052. It is recommended that providers share this resource with their clients. For more information about the line, or resources to share, [visit their website](#).



**Recent Announcements from the County of San Diego**

**New How-To Technology Videos**

The County of San Diego is committed to providing the support and information necessary to ensure that members of the community have access to the resources they need to stay healthy, safe and thriving during COVID-19. How-To Technology Videos have been created to help teach you and your loved ones how to stay connected and get the things you need using technology, such as your smartphone, tablet, or computer. Currently, there are videos

on how to order food from restaurants and how to order groceries using your phone. We are still in the process of producing more, so stay tuned on our [Live Well @ Home website](#) or on our [Live Well San Diego YouTube channel!](#)

### **Plasma Donation from Recovered COVID-19 Patients are Needed**

Local hospital requests for COVID-19 convalescent plasma (CCP) spiked in the last week and current inventory will not meet demand over the coming days.

Recovered COVID-19 patients are needed to meet demand. While COVID-19 has no proven treatment, plasma taken from those who have recovered may help patients currently fighting the virus because the plasma has developed antibodies against the virus.

Individuals can donate convalescent plasma if they have a confirmed positive laboratory test and no symptoms for the last 28 days. People who test positive with a COVID-19 antibody test can also donate. San Diego Blood Bank has created a form where people can submit their contact information to be qualified for convalescent plasma donation at <http://www.sandiegobloodbank.org/donateplasma>.

### **Join the *Live Well San Diego* Fitness Challenge and virtual 5K!**

While we wait for a coronavirus vaccine, eating well, exercising and managing stress is an important way to stay healthy and boost your immune system. To help, Live Well San Diego invites you to participate in the [virtual 2020 Live Well San Diego 5K & Fitness Challenge](#), and it's FREE!

There is FREE registration

FREE fitness events

FREE race swag (hat – while supplies last!)

The 5K Fitness Challenge will kick-off on **July 13th and finish on August 16th** with a 5K Virtual Race. Join the online fitness community through the Daily Endorphin platform for a little friendly competition and to help keep your step count on track and keep you in-the-know. [Click here to learn more.](#)



## **Upcoming Telebriefings**



## Telebriefing for **Long-Term Care and Residential Care Facilities**

WHEN: Friday, July 24, 2020 at 4:00pm

Please [pre-submit your questions in advance here](#). All participants will be muted during the meeting. Participants will have the opportunity to ask questions during the call through the online chat feature on the Zoom platform.

### **This Week!**

**Friday, July 24  
at 4:00pm**

**Join the telebriefing at the specified time and date using one of the options below:**

- Option 1 | Computer (preferred):
  - Click on the following link <https://zoom.us/j/218631109>
  - Meeting ID: 218 631 109.
  - If you have any difficulties accessing the participant link, please use option 2.
- Option 2 | Phone:
  - Dial-In Number: 1 (669) 900-6833 or 1 (346) 248-7799
  - Meeting ID: 218 631 109.

[Visit the Long-Term Care and Residential Care Facilities Sector Support webpage to learn more.](#)



## Telebriefing for **Older Adult and Disability Service Providers**

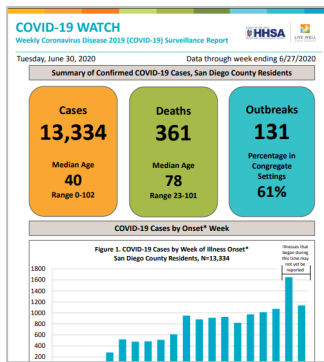
WHEN: Friday, August 21, 2020 at 4:00 p.m.

Please [pre-submit your questions at least 24 hours before the telebriefing](#), so that they can be answered on the call. Participants will also have the opportunity to ask questions during the call through the online chat feature on the Zoom platform. [Please click here for more information, including access link and call-in option.](#)

**Friday, Aug. 21  
at 4:00pm**



**Ongoing Programs, Services, and Resources**



## County of San Diego COVID-19 Dashboard and Weekly “COVID-19 Watch” Report

The County of San Diego publishes a weekly surveillance report on the coronavirus-sd.com website called “COVID-19 Watch”.

[Click here to review the report.](#)

Additionally, visualize and track data real time on the interactive web-based dashboard developed by the County of San Diego Epidemiology and Immunization Services Branch.

[See the dashboard here.](#)



## Latest San Diego County Public Health Order

The latest updates to the local Public Health Order included additional key items for essential businesses still in operation.

[Read the latest order.](#)

SanDiegoCounty.gov Home

Coronavirus Disease 2019

CORONAVIRUS IN SAN DIEGO HEALTH ORDER REOPENING

Long-Term Care and Residential Facilities

The information on this page is intended for those working with populations in long-term care facilities and residential facilities.

- Announcements and Updates
- County Communications
- California Department of Public Health Communications
- California Department of Social Services Communications
- Resource and Guidance Links
- Additional Resources

Announcements and Updates

Sign Up for Email Updates Read Past Email Updates

Join Us for Long-Term Care and Residential Facilities Telebriefings

Submit Questions Before Each Telebriefing

Join Us Every Other Week for Older Adult and Disability Service Provider Telebriefings

## Recent Email Updates and Resources from the Long-Term Care and Residential Care Sector

- [July 15, 2020 Update](#)
- [July 8, 2020 Update](#)
- [July 1, 2020 Update](#)
- [June 24, 2020 Update](#)

[Click here to browse all past email updates.](#)

Additionally, check out resources and state guidance the Long-Term Care and Residential Care Facilities homepage:

[www.coronavirus-sd.com/LTC](http://www.coronavirus-sd.com/LTC).



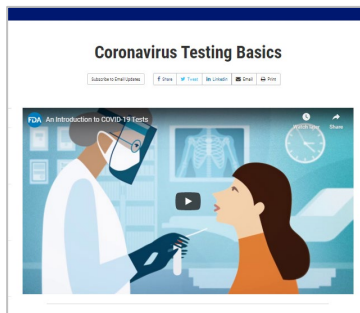
## 211 San Diego

- For health or testing related questions, contact your healthcare provider. For general questions about COVID-19, information about community resources, or if you are uninsured, call **2-1-1 San Diego**.
- [Click here](#) for free COVID-19 testing information.
- [2-1-1 San Diego Flyer](#) (English & Spanish)



## COVID-19 Downloadable Resources and Materials for Your Facility

- [Find FAQs, posters, videos, and other materials.](#)



## Coronavirus Testing Basics from the U.S. Food and Drug Administration

The U.S. Food and Drug Administration (FDA) published a resource to help educate about the different types of coronavirus tests, including approximate processing time, what to expect, and whether or not a re-test is generally recommended.

[Click here to view the resource.](#)



## Guidance from the Centers for Disease Control and Prevention

- [Guidelines for Group Homes for Individuals with Disabilities](#)
- [Guidelines for Direct Service Providers of Individuals with Disabilities](#)
- [Key Strategies to Prepare for COVID-19 in Long-Term Care Facilities \(LTCFs\)](#)
- [Symptoms of Coronavirus](#)
- [Considerations When Preparing for COVID-19 in Assisted Living Facilities](#)



- [Considerations for Memory Care Units in Long-term Care Facilities](#)

For general information about COVID-19 from the CDC, please visit [www.cdc.gov/coronavirus](http://www.cdc.gov/coronavirus).



### **General COVID-19 Information from State and Federal Organizations**

- [California Department of Public Health, Immunization Branch – COVID-19](#)
- [Centers for Disease Control and Prevention – COVID-19](#)
- [California Department of Social Services – COVID 19](#)
- [World Health Organization – Coronavirus Disease \(COVID-19\) Outbreak](#)



## **Stay Connected**



For questions related to long-term care and residential care facilities, please email: [COVID-LTC@sdcounty.ca.gov](mailto:COVID-LTC@sdcounty.ca.gov).



Get the latest information about what's happening across the county with COVID-19.



Text **COSD COVID-19** to **468-311**

to get text alert updates from the County of San Diego.

