



CORONAVIRUS
DISEASE 2019 (COVID-19)

WEEKLY UPDATE

LONG-TERM CARE AND RESIDENTIAL CARE FACILITIES

Wednesday, August 12, 2020

Greetings Long-Term Care and Residential Care Facilities of San Diego County,

Please find information below regarding the latest guidance and resources from county, state and federal organizations, including **new**:

- All Facilities Letters (AFL) regarding visitation guidance (AFL 20-38.4),
- new online survey application for COVID-19 Skilled Nursing Facilities mitigation surveys (AFL 20-63.1),
- upcoming Web Forum on isolation and telehealth hosted by Dialogue4Health, a project of the Public Health Institute,
- Medi-Cal managed care plans cover transportation services, including to COVID-19 testing sites, and
- CDC Morbidity and Mortality Weekly Report Early Release: two reports on COVID-19 Involving Nursing Home Residents Receiving Dialysis and Facility-Wide Testing for COVID-19 in Nursing Homes.

Please see details below.

As we continue to give updates from our County public health perspective, please be aware that you should always confer with your licensing entity for approval of any operational changes.

If you missed any recent email updates from this sector, [review them here](#). For additional information and resources, please see our website www.coronavirus-sd.com/LTC.

Thank you for your continued efforts and partnership with the County of San Diego!



Announcements and News



Updates from the California Department of Public Health

CDPH publishes news and All Facilities Letters (AFLs) regularly. If you would like to receive email notifications of AFLs, please submit your request to LNCPolicy@cdph.ca.gov. See the newly released advisories below:

Letter to Skilled Nursing Facilities: AFL 20-38.4 – August 7, 2020 **NEW!**

Visitor Limitations Guidance

This AFL supersedes AFL 20-38.3 and notifies all facilities of updated visitor guidelines for pediatric patients, patients in labor and delivery, neonatal intensive care unit (NICU) patients, pediatric intensive care unit patients (PICU) patients, and patients at end-of-life and patients with physical, intellectual, and/or developmental disabilities and patients with cognitive impairments. Health facilities may permit a support person to accompany a patient for whom a support person has been determined to be essential to the care of the patient (medically necessary), including patients with physical, intellectual, and/or developmental disabilities and patients with cognitive impairments. This AFL has been updated to clarify that long-term care facilities and hospitals may permit students obtaining their clinical experience into the facility if they meet the CDC guidelines for healthcare workers. This revision also clarifies when a doula may be permitted during labor and delivery.

[Click here to read AFL 20-38.4](#)

Letter to Skilled Nursing Facilities: AFL 20-63.1 – August 7, 2020 **NEW!**

Deployment of Online Survey Application for COVID-19 SNF Mitigation Surveys

This AFL supersedes AFL 20-63 and announces CDPH's phased launch of a new online application for conducting surveys and investigations. Beginning August 7, 2020, CDPH will use the Risk and Safety Solutions (RSS) Inspect to conduct COVID-19 Mitigation Surveys and submit Statements of Deficiencies to SNFs. The **San Diego County RSS go live date is September 8, 2020** (regional launch dates listed [here](#)). Facility-authorized users may access their Statements of Deficiencies and submit their plans of correction in the Risk and Safety Solutions Inspect website <https://hc.riskandsafety.com/>. **Facilities should enroll in the RSS system by August 31, 2020.** This revision outlines the updated process for facility user enrollment.

[Click here to read AFL 20-63.1](#)

[Click here to see a full list of recent AFLs](#)



Updates from the California Department of Social Services (CDSS)

The Community Care Licensing Division (CCLD) of CDSS publishes Provider Information Notices (PINs) to communicate important license related information to CCLD-licensed providers. The local CDSS San Diego Adult and Senior Care office can be reached at (619) 767-2300 or CCLASCPSanDiegoRO@dss.ca.gov.

Home Care Organizations Available to Assist with Temporary Staffing in Adult and Senior Care Facilities with Clients Who Have Tested Positive for COVID-19 Provider – August 5, 2020

This PIN announces a resource list of Home Care Organizations (HCO) available to assist with temporary staffing in Adult and Senior Care (ASC) facilities with clients in care who are COVID-19 positive. This PIN also provides for Home Care Aides serving clients who are COVID-19 positive.

[Click here to read PIN 20-19-CCLD](#)

Food and Drug Administration Safety Notice Regarding Hand Sanitizers Containing Methanol – August 3, 2020

This PIN provides a safety notice to all Adult and Senior Care (ASC) Program licensees and Home Care Organization (HCO) licensees regarding hand sanitizers containing methanol.

[Click here to read PIN 20-18-CCLD](#)

Federal Relief Available to Licensees During the Covid-19 Emergency – July 31, 2020

This PIN provides information on Coronavirus Aid, Relief, and Economic Security (CARES) Act federal relief that may be available to licensees experiencing economic hardship as a result of the COVID-19 emergency.

[Click here to read PIN 20-17-CCLD](#)

[Click here to browse the full list of recent PINs.](#)






Dialogue4Health, a project of the Public Health Institute, is hosting a Web Forum, to address the growing issue of social isolation and long-term care in older adults, and the many ways providers are working to combat this issue. The Web Forum will also address the roadblocks of current health management in older adults that have increased due to the shift to telemedicine.

Addressing Social Isolation and Long-Term Care through Telehealth During COVID-19

Tuesday, August 18, 2020, 9:00 am to 10:00 am Pacific

NEW! The COVID-19 pandemic has affected millions around the world physically as well as mentally, but a specific group of people have been enduring a double pandemic. Older adults, many who already endured social isolation prior to COVID-19, are more alone than ever before. This isolation can lead to increased health risks, including those already living with chronic illnesses. In addition, older adults with chronic illnesses who are used to face-to-face meetings with their primary care provider are now forced to rapidly learn and navigate the world of telehealth.

For more information and to register, click [here](#).






Healthy San Diego (Medi-Cal)
Health Plan Contact Card

Health Plan	Member Services	Pharmacy Line	Transportation	Telephone Advice Line	Behavioral Health Services
Access Better Health	1-855-712-8076	1-800-795-5732	1-855-712-8076	1-855-712-8076 (24/7)	1-855-712-8076
Blue Shield of California	1-855-488-0757	1-855-488-0757	1-855-488-0757	1-800-488-4155	1-855-571-3711
Community Health Group	1-800-274-7766	1-800-274-7766	1-800-274-7766	1-800-467-4868	1-800-467-4868
Health Net	1-800-475-4333	1-800-897-8344	1-800-475-4333	1-800-475-4333	1-888-424-0056
Kaiser Permanente	1-800-654-6888	1-800-798-0000	1-800-654-6888	1-800-798-3000	1-877-961-0476
Molina Healthcare	1-888-865-4622	1-888-865-4622	1-888-865-4622	1-888-276-8700	1-888-461-4611
UnitedHealthcare	1-866-270-5785	1-800-338-6826	1-866-270-5785	1-866-270-5785	1-866-270-5785

Medi-Cal beneficiaries not enrolled in a Medi-Cal Managed Care Plan or who have no insurance and need general health care advice can call the OHS Medi-Nurse Line at 1-877-469-3622 24 hours a day, 7 days a week.

County Mental Health Plan: To access Specialty Mental Health and the Drug Medi-Cal Organized Delivery System: 1-888-725-2789
 Health Family Service: Crisis Helpline/Program: 1-800-475-2333
 Complete and Enhanced Residential Psychiatric Services: 1-888-475-2333
 Community Center for Health Education & Advocacy: Help obtaining needed services and breaking down barriers: 1-877-734-0268



Medi-Cal Managed Care Plans cover transportation to all Medi-Cal covered services including Specialty Mental Health, Drug Medi-Cal Organized Delivery System and Dental Care.

Medi-Cal Managed Care Plans Cover Transportation to Covered Services, Including to COVID-19 Testing Sites

NEW! Medi-Cal Managed Care Plans cover transportation to all Medi-Cal covered services including to COVID-19 Testing Sites, Specialty Mental Health, Drug Medi-Cal Organized Delivery System, Denti-Cal, and to the temporary isolation hotels. The Plans transportation numbers can be found on the [Healthy San Diego Health Plan Contact Card](#).



Updates from the Centers for Disease Control and Prevention

NEW! Morbidity and Mortality Weekly Report Early Release – August 11, 2020

Please see below for two reports on SARS-CoV-2 (COVID-19):

- 1) [Transmission of SARS-CoV-2 Involving Residents Receiving Dialysis in a Nursing Home — Maryland, April 2020](#)
- 2) [Facility-Wide Testing for SARS-CoV-2 in Nursing Homes — Seven U.S. Jurisdictions, March–June 2020](#)

Duration of Isolation & Precautions for Adults – Updated July 22, 2020

Accumulating evidence supports ending isolation and precautions for persons with COVID-19 using a symptom-based strategy. This update incorporates recent evidence to inform the duration of isolation and precautions recommended to prevent transmission of SARS-CoV-2 to others, while limiting unnecessary prolonged isolation and unnecessary use of laboratory testing resources.

[Click here to read the full update.](#)





**Friday, Aug. 14
at 4:00pm**

Telebriefing for **Long-Term Care and Residential Care Facilities with Special Guests from the County Office of Emergency Services on Fire Season Safety & Preparedness**

WHEN: Friday, August 14, 2020 at 4:00pm

Please [pre-submit your questions in advance here](#). All participants will be muted during the meeting. Participants will have the opportunity to ask questions during the call through the online chat feature on the Zoom platform.

Join the telebriefing at the specified time and date using one of the options below:

- Option 1 | Computer (preferred):
 - Click on the following link <https://zoom.us/j/218631109>
 - Meeting ID: 218 631 109.
 - If you have any difficulties accessing the participant link, please use option 2.
- Option 2 | Phone:
 - Dial-In Number: 1 (669) 900-6833 or 1 (346) 248-7799
 - Meeting ID: 218 631 109.

[Visit the Long-Term Care and Residential Care Facilities Sector Support webpage to learn more.](#)



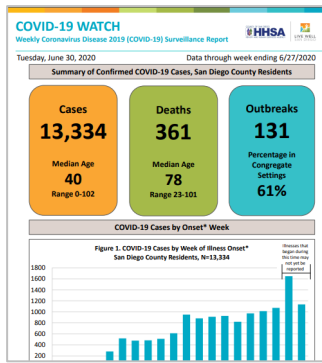
**Friday, Aug. 21
at 4:00pm**

Telebriefing for **Older Adult and Disability Service Providers**

WHEN: Friday, August 21, 2020 at 4:00 p.m.

Please [pre-submit your questions at least 24 hours before the telebriefing](#), so that they can be answered on the call. Participants will also have the opportunity to ask questions during the call through the online chat feature on the Zoom platform. [Please click here for more information, including access link and call-in option.](#)





County of San Diego COVID-19 Dashboard and Weekly “COVID-19 Watch” Report

The County of San Diego publishes a weekly surveillance report on the coronavirus-sd.com website called “COVID-19 Watch”.

[Click here to review the report.](#)

Additionally, visualize and track data real time on the interactive web-based dashboard developed by the County of San Diego Epidemiology and Immunization Services Branch.

[See the dashboard here.](#)



Latest San Diego County Public Health Order

The latest updates to the local Public Health Order included additional key items for essential businesses still in operation.

[Read the latest order.](#)

SanDiegoCounty.gov Home
Coronavirus Disease 2019
CORONAVIRUS IN SAN DIEGO HEALTH ORDER REOPENING HEA

Long-Term Care and Residential Facilities

The information on this page is intended for those working with populations in long-term care facilities and residential facilities.

- [Announcements and Updates](#)
- [County Communications](#)
- [California Department of Public Health Communications](#)
- [California Department of Social Services Communications](#)
- [Resource and Guidance Links](#)
- [Additional Resources](#)

Announcements and Updates

[Sign Up for Email Updates](#) [Read Past Email Updates](#)

[Join Us for Long-Term Care and Residential Facilities Telebriefings](#)

[Submit Questions Before Each Telebriefing](#)

[Join Us Every Other Week for Older Adult and Disability Service Provider Telebriefings](#)

Recent Email Updates and Resources from the Long-Term Care and Residential Care Sector

- [August 5, 2020 Update](#)
- [July 29, 2020 Update](#)
- [July 22, 2020 Update](#)

[Click here to browse all past email updates.](#)

Additionally, check out resources and state guidance the Long-Term Care and Residential Care Facilities homepage:

www.coronavirus-sd.com/LTC.



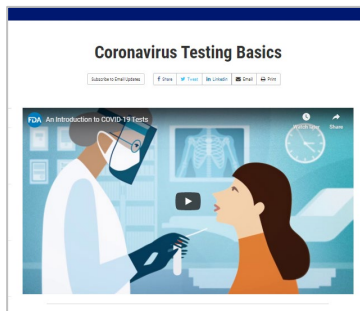
211 San Diego

- For health or testing related questions, contact your healthcare provider. For general questions about COVID-19, information about community resources, or if you are uninsured, call **2-1-1 San Diego**.
- [Click here](#) for free COVID-19 testing information.
- [2-1-1 San Diego Flyer](#) (English & Spanish)



COVID-19 Downloadable Resources and Materials for Your Facility

- [Find FAQs, posters, videos, and other materials.](#)



Coronavirus Testing Basics from the U.S. Food and Drug Administration

The U.S. Food and Drug Administration (FDA) published a resource to help educate about the different types of coronavirus tests, including approximate processing time, what to expect, and whether or not a re-test is generally recommended.

[Click here to view the resource.](#)



Guidance from the Centers for Disease Control and Prevention

- [Guidelines for Group Homes for Individuals with Disabilities](#)
- [Guidelines for Direct Service Providers of Individuals with Disabilities](#)
- [Key Strategies to Prepare for COVID-19 in Long-Term Care Facilities \(LTCFs\)](#)
- [Symptoms of Coronavirus](#)
- [Considerations When Preparing for COVID-19 in Assisted Living Facilities](#)

- [Considerations for Memory Care Units in Long-term Care Facilities](#)

For general information about COVID-19 from the CDC, please visit www.cdc.gov/coronavirus.



General COVID-19 Information from State and Federal Organizations

- [California Department of Public Health, Immunization Branch – COVID-19](#)
- [Centers for Disease Control and Prevention – COVID-19](#)
- [California Department of Social Services – COVID 19](#)
- [World Health Organization – Coronavirus Disease \(COVID-19\) Outbreak](#)



Stay Connected



For questions related to long-term care and residential care facilities, please email: COVID-LTC@sdcounty.ca.gov.



Get the latest information about what's happening across the county with COVID-19.



Text **COSD COVID-19** to **468-311**

to get text alert updates from the County of San Diego.

