



Live Well San Diego LONG-TERM CARE FACILITIES



[Facebook](#) | [Twitter](#) | [Instagram](#) | [YouTube](#) | [Tik Tok](#)

TELEBRIEFING

Upcoming Telebriefing will be **Thursday, September 22, 2022, 2:00-3:00 PM**

[Zoom Meeting Link](#)

[Submit Telebriefing Questions](#)

[Submit Telebriefing Topics](#)

For listen mode only, call: 1 (669) 900-6833, when prompted, enter the following Meeting ID:
826 2009 8291. Passcode: 242111

SECTOR ANNOUNCEMENTS

August 31, 2022,

California Health Alert Network released an update to notify healthcare facilities that California has now entered Phase II of the State Contingency Plan for Excessive Heat Emergencies. High temperatures are expected to begin on 8-31-22 and may last through 9-10-22. You can go to the [National Weather Service](#) to access any heat advisories in your area. **Healthcare facilities should implement recommended precautionary measures to keep individuals safe and comfortable during extremely hot**

weather. Facilities must have contingency plans in place to deal with the loss of air conditioning, or in the case when no air conditioning is available, take measures to ensure patients and residents are free of adverse conditions that may cause heat-related health complications. Facilities must report extreme heat conditions that compromise patient health and safety and/or require an evacuation, transfer, or discharge of patients. You can revisit [AFL 21-16](#) for additional details.

The Centers for Disease Control and Prevention (CDC) also released a Health Alert to provide updates on **recent variant influenza virus infections** and summarize CDC's recommendations for identification, treatment, and prevention of variant influenza virus infection for the summer and fall of 2022. Individuals, especially those at increased risk of influenza complications, can take public health measures to limit their risk of infection (e.g., limiting exposure to infected animals). You can see the entire [Health Advisory](#) for more information on this evolving situation.

Additionally, this [Healthcare Provider Health Advisory](#) provides updates on laboratory testing and treatment for Monkeypox (MPX) virus infection in California. Testing for Orthopoxvirus and/or MPX virus is currently available through 11 public health laboratories and multiple commercial laboratories. People with suspected MPX should isolate while awaiting testing results and if confirmed positive continue isolation until all lesions are healed. Please see the link shared above for more information.

Lastly, during our telebriefing last week, we had an Ombudsman representative speak about the **Long-Term Care (LTC) Ombudsman Program**. This program advocates for residents in LTC facilities, listens to resident's concerns, provides information and assistance when requested, and will investigate and resolve complaints related to care or personal rights. Contact the LTC Ombudsman at 800-640-4661. You can also find more information [here](#).

Please find a summary of important resources the County and other partners are currently offering below:

Vaccines and Boosters

- Visit [COVID-19 Vaccines](#) to locate vaccination sites for staff
- If you have immobile residents who need vaccines or boosters, our County of San Diego Rapid Response Team can assist. Please email COVID-HealthcareStatus@sdcounty.ca.gov and one of our team members can help you.

Testing

- Visit the [County's webpage](#) to find free COVID-19 testing site locations and times
- If your facility is in need of antigen test kits, please email logs.testing.hhsa@sdcounty.ca.gov
- if you're a SNF and in need of test kits for visitors, please email moc.logs.hhsa@sdcounty.ca.gov.
- If you are a California Department of Social Services (CDSS)-licensed facility and in need of Over-The-Counter COVID-19 test kits that can now be used for visitors, staff, or residents, please email moc.logs.hhsa@sdcounty.ca.gov. These kits do not require a CLIA waiver.
- You can request free, at-home COVID-19 tests for personal use from the federal government. See more details [here](#). U.S. households can place a total of 3 separate orders for free, at-home COVID-19 rapid tests (4 tests per order).
- If you have a health plan, you can purchase over-the-counter COVID-19 tests at no cost. See more details [here](#).

Treatment

- Visit [Treatment \(sandiegocounty.gov\)](#) for COVID-19 treatment options near you.

For other questions, email COVID-LTC@sdcounty.ca.gov or for more information for long-term care facilities, visit www.coronavirus-sd.com/LTC.

Thank you for your continued efforts and partnership with the County of San Diego!



California Department of Public Health

[AFL 22-17](#) to All Health Facilities, July 7, 2022

This AFL informs licensees of FY 2022-23 license renewal fees as approved by the Governor and effective on July 1, 2022.

[AFL 20-34.7](#) to Adult Day Health Care Centers (ADHCs), June 30, 2022

This AFL notifies ADHCs of a temporary waiver of specified regulatory requirements due to the state of emergency related to the Coronavirus Disease 2019 (COVID-19) outbreak. In accordance with Executive Order [N-11-22](#) (PDF), issued June 17, 2022, this AFL extends the temporary waiver of specified regulatory requirements until September 30, 2022.

Effective October 1, 2022, ADHCs must be open and providing all basic services in the center.

[AFL 20-49.6](#) to All Facilities, June 30, 2022

In accordance with Executive Order [N-11-22](#) (PDF), issued June 17, 2022, this AFL notifies all facilities that the temporary waiver of specified statutory and regulatory requirements is extended until the end of the declared COVID-19 emergency.

[AFL 21-36.3](#) to Skilled Nursing Facilities, June 30, 2022

This AFL notifies skilled nursing facilities (SNFs) of a temporary waiver of specified regulatory requirements due to the state of emergency related to the Coronavirus Disease 2019 (COVID-19) outbreak. In accordance with Executive Order [N-11-22](#) (PDF), issued June 17, 2022, this AFL extends the temporary waiver of specified space conversion requirements until the end of the declared COVID-19 emergency.

[AFL 22-13](#) to Skilled Nursing Facilities, June 9, 2022

This AFL incorporates updated recommendations from the California Department of Public Health (CDPH) for SNFs conducting diagnostic screening testing of SNF HCP and response testing of SNF residents and HCP to prevent spread of COVID-19 in the facility informed by [CDC recommendations](#) and Centers for Medicare and Medicaid Services requirements. This AFL includes [updated CDC guidance](#) related to quarantine and outbreak investigations. This AFL revision incorporates the January, 25 2022 amended [Public Health Order](#) requiring SNF HCP to receive boosters and complete their primary series and booster dose by March 1, 2022, unless exempt. This revision also updates the testing requirements to require twice weekly COVID-19 testing for unvaccinated exempt HCP and booster-eligible HCP who have not yet received their booster. CDPH continues to recommend that all HCP in SNFs (including those that have completed their primary series and booster dose) undergo at least twice weekly screening testing wherever feasible.

[Recent AFLs](#)



California Department of Social Services

[PIN 22-26-ASC](#) to All Adult and Senior Care Program Licensees, August 12, 2022
announces an upcoming informational call with Adult and Senior Care (ASC) licensees and their staff on August 17, 2022 to review infection control information: Monkeypox and COVID-19. CCLD encouraged licensees and staff to view the [PowerPoint Presentation](#) while participating on the call.

[PIN 22-25-ASC](#) to All Adults and Senior Care Program Licensees, July 22, 2022
PIN 22-25-ASC announced an informational call with Adult and Senior Care (ASC) licensees and their staff on July 27, 2022 to review Adult Day Program (ADP) Guidance, Infection Preventionist resources, Ventilation, and Emergency Preparedness.

[PIN 22-24-ASC](#) to All Residential Care Facility for the Elderly Licensees, July 20, 2022
PIN 22-24-ASC provides guidance to licensees in collaborating with home health agencies (HHAs) and hospice agencies to provide care to residents in Residential Care Facilities for the Elderly (RCFEs). The information provided below is not an exhaustive list of the responsibilities related to working with HHAs and hospice agencies. It is the responsibility of the licensee to ensure all statutes and regulations are followed

[PIN-22-23-ASC](#) to All Adult and Senior Care Providers, July 18, 2022
PIN 22-23-ASC provides updated guidance on infection control specific to Adult Day Programs (ADP) during the Coronavirus Disease 2019 (COVID-19) pandemic. Specifically, this PIN provides new guidance on participation in day programs, as well as updated guidance on mitigation plans, masking, testing, COVID-19 vaccination, visitors, communal dining, public outings, and transportation. All residential Adult and Senior Care (ASC) licensees with participants in an ADP should review this PIN. This PIN supersedes PIN 21-33-ASC, dated July 27, 2021.

[PIN 22-21-ASC](#) to All Adult and Senior Care Licensees, June 29, 2022
PIN 22-21-ASC supersedes PIN 22-12-ASC, dated March 29, 2022, and notifies Adult and Senior Care (ASC) licensees and Continuing Care Retirement Community providers that pursuant to the Governor's Executive Order N-11-22, dated June 17, 2022, facilities operating under existing California Department of Social Services (CDSS) COVID-19

waivers are permitted to continue operating pursuant to such waivers through the expiration date set forth by CDSS, or for the duration of the Governor's March 4, 2020 Proclamation of a State of Emergency, whichever occurs first.

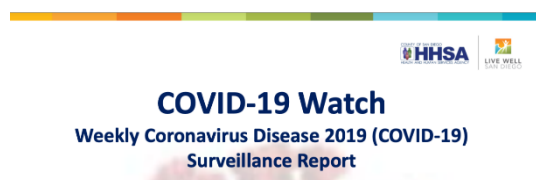
[PIN 22-19-ASC](#) to All Adult and Senior Care Program Licensees, June 10, 2022
Announces an upcoming informational call with Adult and Senior Care (ASC) licensees and their staff on June 15, 2022 to review new and current COVID-19 updates on the second booster, Test to Treat program, and infection control plan forms

[PIN 22-18-ASC](#) to all Adult and Senior Care Providers June 03, 2022
PIN 22-18-ASC announces the release of the Infection Control Plan courtesy forms for Adult and Senior Care (ASC) facilities with the exception of Adult Residential Facilities for Persons with Special Health Care Needs.

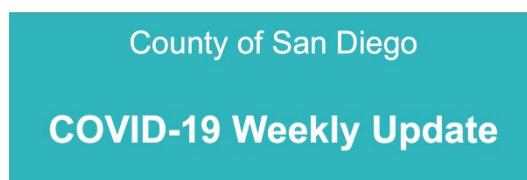
Recent PINs

COVID-19 UPDATES & RESOURCES

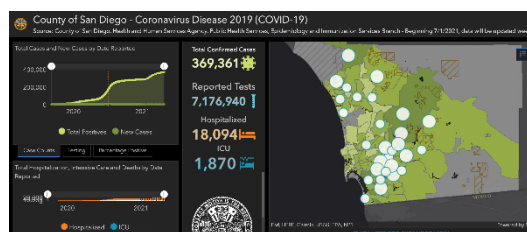
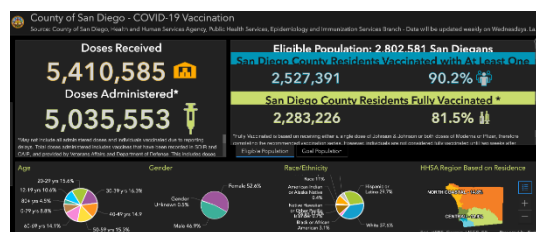
COVID-19 in San Diego County



[COVID-19 Watch: Weekly COVID-19
Surveillance Report \(8/25/22\)](#)



[COVID-19 Weekly
Update Presentation \(8/25/22\)](#)



PREVENTION

COVID-19 Vaccines - Cornerstone of Prevention



Second COVID-19 mRNA boosters are authorized for all persons ≥ 50 years of age and for persons ≥ 12 years of age with moderate to severe immunosuppression. A study published in the NEJM demonstrated increased [Vaccine Effectiveness with the Second Booster](#), when given at least 4 months after the first booster.

Please email COVID-HealthcareStatus@sdcounty.ca.gov if your facility would like onsite assistance from the Rapid Response Team (RRT) to administer vaccinations and boosters for immobile residents.



EVUSHELD INFORMATIONAL SHEET SUMMARY

Pre-Exposure Prophylaxis for COVID-19

A Prescription Guide for Providers

Evusheld is a combination of tixagevimab plus cilgavimab monoclonal antibodies issued under Emergency Use Authorization (EUA) for individuals: (1) who do not have COVID-19, (2) who have not been recently exposed to COVID-19, **AND** (3) who are severely to moderately immunocompromised **OR** who are not able to be fully vaccinated **with any available COVID-19 vaccine** due to a history of severe adverse reaction to a COVID-19 vaccine or any of its components.

Dosage and Administration

Evusheld is only for pre-exposure prophylaxis. A negative COVID test is required 5 days prior to administration along with a history of no known recent exposures. If a person has received a COVID-19 vaccine, Evusheld should be administered at least 2 weeks after vaccination. The drug is not authorized for treatment of COVID-19. One dose of Evusheld, administered as two separate gluteal 3 mL injections consecutively (one 300-mg injection per monoclonal antibody), likely provides protection in the 3-month range with new variants. A one-hour observation period is required following treatment. Limited data inform the timing of repeat doses and are not included in the current EUA.

Dosing for individuals who initially received 150 mg of tixagevimab and 150 mg cilgavimab: Initial dose ≤ 3 months prior: 150 mg tixagevimab and 150 mg cilgavimab; Initial dose > 3 months prior: 300 mg tixagevimab and 300 mg cilgavimab.



Evusheld Injection

Evusheld is a combination monoclonal antibody indicated for prevention (pre-exposure prophylaxis) of COVID-19 for adults and pediatric individuals (≥ 12 years of age, weighing at least 40kg) with [moderate or severe immunosuppression](#) or who have had a severe allergic reaction to COVID-19 vaccine. Evusheld reduces the relative risk of getting COVID by up to 77%. Persons eligible include those who:

- Are receiving active cancer treatment
- Received an organ transplant and are taking medicine to suppress the immune system
- Have moderate or severe primary immunodeficiency (such as DiGeorge syndrome, Wiskott-Aldrich syndrome)
- Have advanced or untreated HIV infection
- Take high-dose corticosteroids or other drugs that may suppress their immune response

Evusheld Availability:

Evusheld can be found throughout San Diego at hospital systems, medical groups, and community health centers using the [therapeutics locator](#), and at Family Health Centers of San Diego by completing a [treatment request form](#). For more information, call ASPR at 1-800-232-0233.

If your skilled nursing facility is interested in Evusheld, please email MCSDNursingM_MAT.HHSA@sdcounty.ca.gov for more information. Please note that the County is available to provide both the drug **and** the administration for qualifying patients at your facility.

If your facility is interested in carrying Evusheld, email moc.logs.hhsa@sdcounty.ca.gov to learn more about becoming a provider.

[Evusheld Informational Flyer](#)

TREATMENT



PAXLOVID INFORMATIONAL SHEET SUMMARY

ORAL ANTIVIRAL MEDICATIONS TO TREAT MILD TO MODERATE COVID-19

A Prescription Guide for Providers

PAXLOVID is a combination of nirmatrelvir and ritonavir protease inhibitors issued under Emergency Use Authorization (EUA) for treatment of mild to moderate COVID-19 in adults and children older than 12 years and weighing at least 40 kg. Nirmatrelvir inhibits the SARS-CoV-2 main protease preventing viral replication. Ritonavir inhibits the CYP3A-mediated metabolism of nirmatrelvir, resulting in increased plasma concentrations of nirmatrelvir.

The medication has EUA for those at high risk for progression to severe COVID-19, including hospitalization and death. PAXLOVID is not authorized for patients requiring hospitalization or for pre-exposure or post-exposure prophylaxis.

Dosage and Administration

- Initiate as soon as possible after diagnosis of COVID-19 and **within 5 days** of symptom onset
- 300 mg (two 150-mg tablets) nirmatrelvir and one 100-mg tablet ritonavir all taken together twice daily for 5 days.
- For moderate renal impairment (eGFR ≥ 30 to < 60 mL/min): 150 mg nirmatrelvir (one 150-mg tablet) with 100 mg ritonavir (one 100-mg tablet) taken together twice daily for 5 days.
- PAXLOVID is not recommended in patients with severe renal impairment (eGFR < 30 mL/min) or severe hepatic impairment (Child Pugh Class C)
- Take with or without food. Swallow all tablets whole – do not chew, break, or crush tablets.
- If a dose is missed within 8 hours, take as soon as possible and resume normal dosing schedule. If missed by more than 8 hours, do not take the missed dose. Instead take the next dose at the regularly scheduled time.



Paxlovid Oral Therapy - First Line of Therapy

Paxlovid is a combination of protease inhibitors to treat mild to moderate COVID-19 in high-risk outpatient adults and children over 12, weighing at least 40kg. Paxlovid reduces the relative risk of hospitalization and mortality by up to 88%. The potential for Drug Interactions can be checked using the [Liverpool COVID-19 Interactions Tool](#). Please note that there is potential for extensive drug-drug interaction which can either result in high levels of co-administered drug or result in increased clearance. Additionally, dosage and administration must be modified for patients experiencing Renal failure.

Paxlovid Availability:

Paxlovid requires a prescription. The [therapeutics locator](#) identifies pharmacies and community health centers that may carry Paxlovid.

Paxlovid Informational Flyer

BEBTELOVIMAB INFORMATIONAL SHEET SUMMARY

4 April 2022



Monoclonal Antibody for Treatment of COVID-19

A Prescription Guide for Providers

The U.S. Food and Drug Administration (FDA) issued Emergency Use Authorization (EUA) of intravenous bebtelovimab monoclonal antibody for the treatment of mild-to-moderate COVID-19 in adults and pediatric patients (12 years of age and older weighing at least 40 kg [88 lbs]). Bebtelovimab is a human immunoglobulin G1 (IgG1 variant) monoclonal antibody composed of 449 amino acids produced by a cell culture or cell line. Bebtelovimab binds the spike protein of SARS-CoV-2 virus and blocks attachment to the human ACE2 receptor. Of significance, bebtelovimab is active against the BA.2 Omicron variant.

Dosage and Administration

Dosage of bebtelovimab in adults and pediatric patients (≥ 12 years of age and weighing at least 40 kg [88 lbs]) is 175 mg/2 mL. The medication should be administered as soon as possible after positive results of SARS-CoV-2 viral testing and within 7 days of symptom onset. The medication is administered as a single intravenous injection over at least 30 seconds. After the entire contents of the syringe has been administered, flush the injection line with 0.9% sodium chloride to ensure delivery of the required dose.



Bebtelovimab Intravenous - Minimum 30 Second Infusion

Monoclonal antibody treatment for mild to moderate COVID-19 reduces risk of hospitalization and death 70% in those with a risk of progression to severe COVID-19.

Bebtelovimab Availability:

Bebtelovimab is available at the Monoclonal Antibody Regional Centers (**MARCs**) located throughout San Diego County to medically eligible individuals who are 12 years of age and older. Call **619-685-2500** to access a MARC site, open 7 days a week, There is no cost to patients, regardless of insurance or immigration status. Provider referral is not required.

If your skilled nursing facility is interested in monoclonal antibody treatment, email MCSDNursingM_MAT.HHSA@sdcounty.ca.gov for more information. Please note that the County is available to provide both the drug **and** the administration for qualifying patients at your facility.

Bebtelovimab can also be found at other sites using the [therapeutics locator](#).

If your facility is interested in carrying Bebtelovimab, email moc.logs.hhsa@sdcounty.ca.gov to learn more about becoming a provider.

[Bebtelovimab Informational Flyer](#)



Federal Retail Pharmacy Program (FRPP) Update on COVID-19 Vaccines

The CDC allocates COVID-19 vaccines directly to enrolled retail and LTC pharmacies. Three LTC-specific groups (MHA, Innovatix-PharMerica, and GeriMed) receive federal doses and allocate them to member pharmacies who can then provide vaccines to LTC facilities. Not

every LTC pharmacy in California is enrolled in the the Federal Retail Pharmacy Program (FRPP). To request vaccines from your contracted LTC pharmacy:

1. Enroll in the San Diego Immunization Registry: <http://www.sdiz.org/cair-sdir/enrollment.html>
2. Contact your pharmacy to determine if they are enrolled in the FRPP.
 - If the LTC pharmacy is enrolled in the FRPP, the pharmacy can subcontract with facilities to also administer the vaccine, and the facility does NOT need to enroll as a vaccine provider.
 - If the LTC pharmacy is **NOT** enrolled in the FRPP, facilities can register to be a vaccinators through <https://mycavax.cdph.ca.gov/s/>.
3. If your contracted pharmacy cannot assist, you may request assistance from other San Diego LTC pharmacies enrolled in the FRPP:
 - Guardian Pharmacy Services (MHA): cvrs@guardianpharmacy.net
 - Omnicare of San Diego: Chadd.Eno@omnicare.com
 - Pharmerica (Innovatix): ImmunizeLTC@pharmerica.com
 - SNP Pharmacy LLC (MHA): vaccines@snp-rx.com

UPDATED: Please view contact information for [additional retail pharmacies](#) that offer on-site clinics:

If you have residents that are immobile or unable to leave the facility (such as those with dementia or behavioral health challenges) and the resources above are not able to accommodate your facility for an on-site vaccination clinic, please email COVID-HealthCareStatus@sdcounty.ca.gov.



CDC Streamlines COVID-19 Guidance

Starting August 11, 2022, the Centers for Disease Control and Prevention streamlined its COVID-19 guidance to help people better understand their risk, how to protect themselves and others, what actions to take if exposed to COVID-19, and what actions to take if they are sick or test positive for the virus. See the [CDC website](#) for more information.

CDC COVID-19 Community Level:



San Diego County Surge has Experts Concerned About Long COVID-19

San Diego County has moved into the high-risk level for COVID-19. Case numbers have continued to increase over the last few weeks, which has experts worried about the risk for severe outcomes from infection and long COVID-19. To learn more view the [article](#).



COVID-19 Resources

Visit these links for quick COVID-19 resources in San Diego County.

- [COVID-19 Vaccine & Booster](#)
- [What to do if you have COVID-19](#)
- [What to do if you have been exposed to COVID-19](#)
- [COVID-19 Treatment](#)
- [Free At-Home COVID-19 Tests](#)

MONKEYPOX RESOURCES & UPDATES



Monkeypox Home Isolation Guidance

On August 18th, 2022 the CDPH released new Monkeypox (MPX) Home Isolation Guidance for people with confirmed MPX and those with MPX symptoms who are waiting to be evaluated or waiting for test results. Please visit [CDPH MPX website](#) for more information.



San Diego County Declares Monkeypox a Public Health Emergency

On August 1, 2022, Governor Gavin Newsom declared a State of Emergency as part of California's ongoing response to the monkeypox outbreak. On August 2, 2022, the County of San Diego followed suit by declaring monkeypox a Public Health Emergency.

Keep yourself and your family safe by practicing the following health and harm reduction strategies:

1. Limit close skin to skin contact with multiple partners
2. Know the Signs: Check yourself and ask your partner(s) about recent rashes and illnesses
3. See your healthcare provider if you are experiencing symptoms

For more information visit San Diego County's [monkeypox website](#) and sign up to get [County News Center stories](#) emailed directly to you.



What is Monkeypox?

Anyone can get monkeypox. While risk remains low, it is important to stay informed about how it spreads and contact your health provider if you have been exposed or have symptoms. To learn more about monkeypox please visit the California Department of Public Health [website](#).

COMMUNITY RESOURCES



Be Prepared for Wildfire & Public Safety

SDG&E continually monitors weather and other climate conditions and may have to shut off power to help prevent a wildfire. All residents in San Diego county could be affected and should be prepared. To learn how to stay informed and how to be prepared visit the [SDGE Wildfire Safety website](#).



SD Emergency App

Download the free SD Emergency App to help you plan, prepare, stay informed and recover from an emergency. Find out more by visiting the [Ready San Diego website](#).



Live Well San Diego 5K Sponsor & Exhibitor Opportunities

The [Live Well San Diego 5K](#) will be back in person at Waterfront Park on **Sunday, 9/18/22!** There are [sponsor and exhibitor opportunities](#) to connect with thousands of San Diegans, distribute information or promotional items, and connect with other local organizations. There is **no cost** for *Live Well San Diego* recognized partners to be an exhibitor. Please see the [5K Sponsorship and Exhibitor Form](#) if interested in signing up as a sponsor or exhibitor.



Southeastern Live Well Center Public Art Community Input Tour

The new [Southeastern Live Well Center](#) (SELWC) will be a beautiful, environmentally-friendly facility that will provide easy access to a variety of health and social services and community meeting space for residents. The public art displayed will represent and celebrate the history, diversity and cross-cultural experiences of the community, and your input is needed! View the artists' concept designs presentation, community events and meetings, and provide your input via the public art [survey form](#). To learn more, please see [additional information](#) about the SELWC.