



Live Well San Diego LONG-TERM CARE FACILITIES



[Facebook](#) | [Twitter](#) | [Instagram](#) | [YouTube](#) | [Tik Tok](#)

TELEBRIEFING

Upcoming Telebriefing will be **Thursday, February 10, 2022, 2:00-3:00 PM**

[Zoom Meeting Link](#)

[Submit Telebriefing Questions](#)

For listen mode only, call: 1 (669) 900-6833, when prompted, enter the following Meeting ID: 826 2009 8291. Passcode: 242111

Telebriefing Slides and Recording: January 27, 2022

NEW: Dr. Raymond Chinn, County of San Diego Medical Consultant, [COVID-19 Update](#)

NEW: Jennifer Wheeler, County of San Diego, [LTC Update](#)

[Telebriefing Recording](#)

SECTOR ANNOUNCEMENTS

January 31, 2022

This week, the state issued new Public Health Officer Orders ([Order of the State Public](#)

[Health Officer Health Care Worker Vaccine Requirement; Order of the State Public Health Officer Adult and Senior Care Facilities and Direct Care Worker Vaccine Requirement](#)) extending the deadline for healthcare workers to acquire **their booster doses to March 1, 2022**. Visit [COVID-19 Vaccines](#) for vaccination sites for staff or utilize local pharmacies and your staff's primary healthcare providers. For our vulnerable populations in facilities who need **on-site booster vaccinations** (such as residents who are immobile or unable to leave the facility), there is a new CDPH resource. If you need assistance with boosters or are still waiting to be scheduled for an on-site clinic, please go to this [link](#) for requesting resources to support COVID-19 vaccination from the State.

As the Omicron variant is making its way across San Diego County and our facilities, the impact has caused a strain at County testing sites. We encourage you to make testing appointments at pharmacies, medical providers, and County testing sites to reduce your wait time. You can check out locations and times at the [County's webpage](#) for updated information. The County of San Diego Public Health Laboratory is prioritizing testing of SNFs in outbreak settings. We appreciate your understanding of capacity limitations. If you are a SNF without an outbreak, please use commercial laboratories until further notice. Click [here](#) to view commercial lab resources.

If your facility is in need of antigen testing kits please reach out to logs.testing.hhsa@sdcounty.ca.gov. CDPH recently sent antigen testing kits to local health departments for SNFs to use for visitors only due to new visitation requirements. If you are a SNF and are interested in obtaining these tests for your visitors, please email MOC.LOGS.HHSA@sdcounty.ca.gov

The Statewide Logistics Task Force has made available a 30-day sustainment supply of PPE to all local public health and medical stakeholders. Your facility can request items to include procedural masks, BYD N95 masks, face shields, hand sanitizer, goggles, gowns, and gloves. This is a one-time allotment that **must be requested by February 28, 2022**. You can find details on how to submit your request [here](#).

The federal government is also providing COVID-19 tests. To request four free, at-home COVID-19 tests for personal family use, visit <http://www.covidtests.gov>. Additionally, most people with a health plan can go online or to a pharmacy to purchase over-the-counter COVID-19 tests at no cost, either through reimbursement or free of charge through insurance. See more information [here](#).

We know your facility and your staff are doing all you can to protect the health and safety of your residents and staff. If you would like to share a personal story of how our

information or resources have assisted you, or the impact your healthcare workers have made, please feel free to share with us at COVID-LTC@sdcounty.ca.gov. We would love to highlight the amazing work and compassionate care you provide.

Please find information below regarding the latest guidance and resources from county, state, and federal organizations, including new updates:

- [PowerPoint slides](#) Presentation from Infection Prevention: Upcoming COVID-19 Requirements & Guidance from CDSS Informational Call.
- [AFL 21-28.2](#) Guidance for COVID-19 Testing, Vaccination Verification and Personal Protective Equipment for Health Care Personnel at Skilled Nursing Facilities.
- [AFL 21-29.2](#) Guidance for COVID-19 Testing, Vaccination, and Personal Protective Equipment for Health Care Personnel at Health Care Facilities.
- [AFL 21-30.2](#) Guidance for COVID-19 Testing, Vaccination Verification and Personal Protective Equipment for Health Care Personnel at the Various Types of Intermediate Care Facilities.
- [AFL 21-34.2](#) Guidance for COVID-19 Vaccine Requirement for Healthcare Personnel
- [AFL 22-04](#) Notifies some facilities of the Compassionate Access to Medical Cannabis Act
- [AFL 22-05](#) Notifies Hospice the Extension of Palliative Care Pilot Program
- [AFL 22-06](#) Announces the Online Application Period for Patient Needs Waiver and Workforce Shortage Waiver

For other questions, email COVID-LTC@sdcounty.ca.gov or for more information for long-term care facilities, visit www.coronavirus-sd.com/LTC. Thank you for your continued efforts and partnership with the County of San Diego!



California Department of Public Health

NEW! [AFL 21-28.2](#) to Skilled Nursing Facilities, January 26, 2022

This AFL requires SARS-CoV-2 diagnostic screening testing for HCP in SNFs. The [Public Health Order](#) issued July 26, 2021 related to unvaccinated workers in high risk setting becomes effective August 9, 2021. This AFL requires SNFs to develop and implement processes for verifying the vaccination status of all HCP and for obtaining and tracking documentation of results of SARS-CoV-2 diagnostic screening testing from HCP who are unvaccinated or incompletely vaccinated and includes additional PPE requirements. These

requirements are effective August 9th and should begin as soon as reasonably possible, with full compliance no later than August 23, 2021. This AFL revision notifies all facilities of the January 25, 2022 [Public Health Order](#) and requires HCP to be up to date with vaccinations and receive boosters by March 1, 2022, unless exempt. This revision also requires at least twice weekly COVID-19 testing for all HCP for unvaccinated exempt HCP and booster-eligible HCP who have not yet received their booster in long-term care settings. Facilities must begin testing of all booster-eligible HCP who have not yet received their booster by December 27, 2021 and be in full compliance by January 7, 2022. The California Department of Public Health (CDPH) strongly recommends that all HCP in SNFs (including those that are fully vaccinated and boosted) undergo at least twice weekly screening testing.

NEW! [AFL 21-29.2](#) to All Facilities, January 16, 2022

This AFL requires weekly SARS-CoV-2 diagnostic screening testing for healthcare personnel that are unvaccinated or incompletely vaccinated working the above specified in health care facilities. Facilities must develop and implement processes for verifying the vaccination status of all HCP, and for obtaining and tracking documentation of results of weekly SARS-CoV-2 diagnostic screening testing from HCP who are unvaccinated or incompletely vaccinated as soon as reasonably possible with full compliance no later than August 23, 2021. This AFL revision notifies all facilities of the January 25, 2022 [Public Health Order](#) and requires HCP be up to date with vaccinations and receive boosters by March 1, 2022, unless exempt. This revision also updates the testing requirements to require at least weekly COVID-19 testing for unvaccinated exempt HCP and booster-eligible HCP who have not yet received their booster. Facilities must begin testing of all booster-eligible HCP who have not yet received their booster by December 27, 2021 and be in full compliance by January 7, 2022.

NEW! [AFL 21-30.2](#) to the Various Types of Intermediate Care Facilities, January 26, 2022

This AFL requires twice-weekly SARS-CoV-2 diagnostic screening testing for HCP that are unvaccinated or incompletely vaccinated. Facilities must develop and implement processes for verifying the vaccination status of all HCP, and for obtaining and tracking documentation of results of weekly SARS-CoV-2 diagnostic screening testing from HCP who are not fully vaccinated when reasonably possible with full compliance no later than August 23, 2021. This AFL revision notifies all facilities of the January 25, 2022 [Public Health Order](#) and requires HCP to be up to date with vaccinations and receive boosters by March 1, 2022, unless exempt. This revision also updates the testing requirements to require at least twice weekly COVID-19 testing for all unvaccinated exempt HCP and booster-eligible HCP who have not yet received their booster. Facilities must begin testing of all booster-eligible workers who have not yet received their booster by December 27,

2021 and be in full compliance by January 7, 2022.

NEW! [AFL 21-34.2](#) to All Facilities, January 26, 2022

This AFL notifies all facilities of the August 5, 2021 [Public Health Order](#) related to mandatory vaccination for healthcare workers in identified healthcare settings. This AFL requires all HCP who provide services or work in healthcare facilities to have received either the first dose of a one-dose regimen or their second dose of a two-dose regimen no later than September 30, 2021, unless exempt. This AFL notifies all facilities of the September 28, 2021 [Public Health Order](#) that establishes COVID-19 vaccination requirements for settings in which direct care and services are provided, and were not included in the August 5, 2021 Public Health Order. Direct care workers must receive either the first dose of a one-dose regimen or their second dose of a two-dose regimen no later than November 30, 2021, unless exempt. This includes the following: All in-home direct services workers, including registered home care aides and certified home health aides, except for those workers who only provide services to a recipient with whom they live or who are a family member of the recipient for whom they provide services. All hospice workers who are providing services in the home or in a licensed facility. Facilities and providers must document HCP COVID-19 vaccination or exemption status by the following dates to be in compliance with the public health orders: Home health agencies and hospice providers: November 30, 2021. Healthcare facilities: September 30, 2021. This AFL revision notifies all facilities of the January 25, 2022 [Public Health Order](#) and requires HCP to be up to date with vaccinations and receive boosters by March 1, 2022, unless exempt. This revision also updates the testing requirements to require at least twice weekly COVID-19 testing for unvaccinated exempt HCP and booster-eligible HCP who have not yet received their booster in an acute care or long-term care setting and requires at least weekly COVID-19 testing such HCP other health care settings. [AFL 22-02](#) to Skilled Nursing Facilities, January 14, 2022

Notifies SNFs that the state is sending roughly 330,000 Clinical Laboratory Improvement Amendments (CLIA) waived BinaxNow antigen tests to SNFs for the purposes of testing visitors seeking indoor visitation.

NEW! [AFL 22-04](#) to General Acute Care Hospitals, Special Hospitals, Skilled Nursing Facilities, Congregate Living Health Facilities, and Hospice Facilities, January 26, 2022
Notifies facilities of the chaptering of [SB 311 \(Chapter 384, Statutes of 2021\)](#) permitting the use of medicinal cannabis by terminally ill patients.

NEW! [AFL 22-05](#) to Hospice, January 26, 2022

Notifies hospices of the chaptering of [SB 353 \(Chapter 488, Statutes of 2021\)](#) extending the PCPP until January 1, 2027 and updating the PCPP reporting deadlines.

NEW! [AFL 22-06](#) to Skilled Nursing Facilities, January 26, 2022

Announces the opening of the application period for SNFs requesting a PNW and WSW for fiscal year 2022-2023.

[AFL 21-08.7](#) to General Acute Care Hospitals, Acute Psychiatric Hospitals, and Skilled Nursing Facilities, January 8, 2022

Notifies facilities that until February 1, 2022, HCP who test positive for SARS-CoV-2 and are asymptomatic, may return to work immediately without isolation and without testing, and HCPs who have been exposed and are asymptomatic may return to work immediately without quarantine and without testing. These HCPs must wear an N95 respirator for source control.

[AFL 22-01](#) to All Facilities, January 7, 2022

Provides the rollout schedule for centralization of the program flexibility process by district office and prioritization criteria for registering users for the online application. This AFL announces the new online application for Program Flexibility and Patient Needs Waiver and Workforce Shortage Waiver Applications and provides information on how to register as a user.

[AFL 20-35.6](#) to All Facilities, December 31, 2021

Notifies all facilities of a temporary waiver of specified statutory and regulatory requirements for CNAs due to the state of emergency related to the COVID-19 outbreak. Informs all facilities and applicants that the temporary waiver of specified regulatory requirements for initial certification, renewal, and expired certification have been extended until March 31, 2022, in compliance with Executive Order [N-21-21](#) (PDF). This AFL informs applicants and certificate holders how to obtain/maintain an active/employable status after the expiration of the listed waivers.

View other AFLs at the [All Facilities Letter](#) webpage.



California Department of Social Services

NEW! [PIN 22-02-ASC](#) to All Adult and Senior Care Program Licensees, January 14, 2022
[PowerPoint slides](#) presentation from Infection Prevention: Upcoming COVID-19 Requirements & Guidance from CDSS Informational Call.

[PIN 22-03-ASC](#) to All Adult and Senior Care Program Licensees, January 18, 2022
Announces organizational changes in the Adult and Senior Care Program.

[PIN 22-04-ASC](#) to All Adult and Senior Care Program Licensees, January 18, 2022
Informs Adult and Senior Care (ASC) residential licensees of the Public Health Officer Order of December 31, 2021, which supersedes the August 26, 2021 Requirements for Visitors in Acute Health Care and Long-Term Care Settings. Pursuant to the terms of this Order, this PIN updates the Visitation Waiver and processes for verifying the vaccination status and test results of all visitors, in order to have an indoor or outdoor visit. This Order took effect on January 7, 2022. and will remain in effect until February 7, 2022, and CDPH and CDSS will continue to assess ongoing conditions during this time to determine any further updates.

[PIN 22-01-ASC](#) to All Adult Care Program Licensees, January 6, 2022
Announces the release of an updated Emergency and Disaster Plan form for Adult Care Facilities.

[PIN 21-53-ASC](#) to All Adult and Senior Care Program Licensees, December 28, 2021
Provides notification regarding update COVID-19 vaccination and booster requirements for all workers of ASC facilities. This PIN informs licensees that workers currently eligible for boosters who provide services or work in indoor settings where (1) care is provided to individuals, or (2) persons in care have access for any purpose, are required to be fully vaccinated and receive a booster dose for COVID-19 no later than February 1, 2022, if eligible. Workers not yet eligible for boosters must be in compliance no later than 15 days after the recommended timeframe as specified in the table below for receiving the booster dose.

View the [Adult and Senior Care Winter 2021-22 Quarterly Update](#).

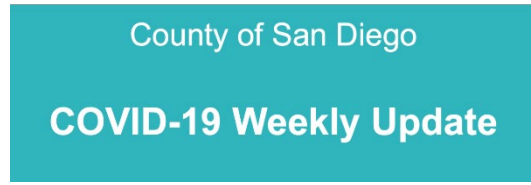
[See the full list of recent PINs](#)

COVID-19 UPDATES & RESOURCES

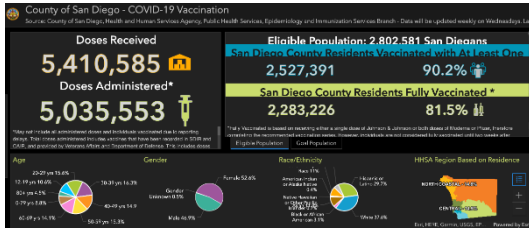
COVID-19 in San Diego County



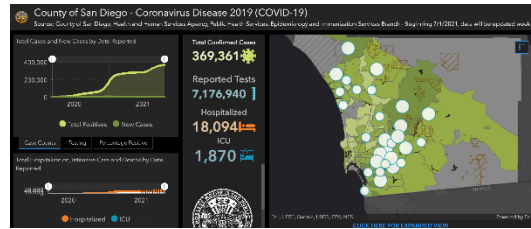
[COVID-19 Watch: Weekly COVID-19 Surveillance Report \(1/19/22\)](#)



[COVID-19 Weekly Update Presentation \(1/19/22\)](#)



[County of San Diego - COVID-19 Vaccination Dashboard](#)



[County of San Diego - COVID-19 Dashboard](#)



Federal Retail Pharmacy Program (FRPP) Update on COVID-19 Vaccines

The CDC allocates COVID-19 vaccines directly to enrolled retail and LTC pharmacies. Three LTC-specific groups (MHA, Innovatix-PharMerica, and GeriMed) receive federal doses and allocate them to member pharmacies who can then provide vaccines to LTC facilities. Not every LTC pharmacy in California is enrolled in the the Federal Retail Pharmacy Program (FRPP). To request vaccines from your contracted LTC pharmacy:

1. Enroll in the San Diego Immunization Registry: <http://www.sdiz.org/cair-sdir/enrollment.html>
2. Contact your pharmacy to determine if they are enrolled in the FRPP.
 - If the LTC pharmacy is enrolled in the FRPP, the pharmacy can subcontract with facilities to also administer the vaccine, and the facility does NOT need to enroll as a vaccine provider.
 - If the LTC pharmacy is **NOT** enrolled in the FRPP, facilities can register to be a vaccinator through <https://mycavax.cdph.ca.gov/s/>.

3. If your contracted pharmacy cannot assist, you may request assistance from other San Diego LTC pharmacies enrolled in the FRPP:
- Guardian Pharmacy Services (MHA): cvrs@guardianpharmacy.net
 - Omnicare of San Diego: Chadd.Eno@omnicare.com
 - Pharmerica (Innovatix): ImmunizeLTC@pharmerica.com
 - SNP Pharmacy LLC (MHA): vaccines@snp-rx.com

UPDATED: Please view contact information for [additional retail pharmacies](#) that offer on-site clinics:

If you have residents that are immobile or unable to leave the facility (such as those with dementia or behavioral health challenges) and the resources above are not able to accommodate your facility for an on-site vaccination clinic, please email COVID-HealthCareStatus@sdcounty.ca.gov. **Due to a high number of requests, it may take our County team a few weeks to complete incoming vaccination clinic requests.**



Get Free At-Home COVID Tests

Every home in the U.S. is eligible to order 4 free at-home COVID-19 tests through covidtests.gov. Health insurers (including Medicaid and CHIP) will also be required to cover [up to 8 home COVID-19 tests](#) per month per member. [Learn more](#) about how to get these COVID-19 home tests for free.



Visiting Healthcare Settings

Planning a visit to a hospital or nursing home? COVID-19 prevention rules for visitors to healthcare settings were recently updated, and will be in effect until at least February 7, 2022. Visit the [revised toolkit](#) to help inform Californians about current rules for visiting hospitals and nursing homes.



County Expands COVID-19 Testing to Meet Demand Caused by Omicron

The County of San Diego is continuing to [expand regional COVID-19 testing](#) to meet the increased demand brought on by the Omicron variant. The County has a network of [free testing sites](#), both walk-up and appointment-based. Local health care providers and many pharmacies also offer testing.



What Mask Should I Wear?

Along with getting vaccinated and boosted, wearing a well-fitting mask over your mouth and nose in indoor public settings or crowds is crucial to protect yourself and others from COVID-19. Visit the [CDC - Your Guide to Masks](#) and the [Shareable Graphic: What Mask Should I Wear?](#) for more information.



Updated COVID-19 Vaccine Recommendations

The CDC has [recommended](#) that individuals to receive a mRNA COVID-19 vaccine (Pfizer or Moderna) over the Johnson & Johnson vaccine, including for booster doses. For more information, visit the [Clinical Considerations for Use of COVID-19 Vaccines](#).



Oral Antiviral Treatments for COVID-19

The FDA recently authorized two oral antiviral treatments for COVID-19: [Merck's molnupiravir](#) and [Pfizer's Paxlovid](#). The two COVID-19 oral treatments will be available in San Diego in the coming days. Please visit the [County News Center](#) for information about how the California Department Public Health will distribute the first shipments in San Diego County.



Mask Mandate for Indoor Public Places

Starting on December 15, Californians must wear a mask in all indoor public settings, regardless of their vaccination status. **The indoor face covering mandate was extended at least through February 15, 2022** and then will be reevaluated. For more information, check out the [CDPH Face Coverings Q&A](#). [Masking signage](#) has also been updated.



Updated Mega Events Guidance

The [CDPH Beyond the Blue Print for Industry and Business and Sectors Guidance](#) was updated on December 31. People who cannot provide proof of full COVID-19 vaccination status at a Mega Event must get a negative COVID-19 test result within 1 day for an antigen test and 2 days for a PCR test before the event.



COVID-19 Omicron Variant

To [protect yourself from the Omicron variant](#), you can get vaccinated and get a booster if you qualify, wear a well-fitting mask, get tested if you have COVID-19 symptoms, wash your hands frequently, and practice physical distancing.

Resources: Answers to Tough Questions: [Omicron Variant](#) | [CDPH Fact Sheet: Omicron Variant](#) | [CDC: Omicron Variant: What You Need to Know](#)



COVID-19 Booster Dose

The COVID-19 booster dose is recommended for everyone ages 16 and older. No-cost booster vaccines are widely available throughout the region, including at medical providers' offices, pharmacies, health clinics, and County vaccination locations. Visit coronavirus-sd.com/vaccine for more information.

Resources: [COVID-19 Booster Vaccines](#) | [Boosters Questions & Answers](#) | [Booster Dose Messaging & Outreach Tools](#)



CDPH Toolkit: Prevent a Winter COVID-19 Surge

In response to the increase in cases and hospitalizations, and to slow the spread of Delta and the Omicron variants, CDPH created a toolkit to help [Prevent a Winter COVID-19 Surge](#). Visit the toolkit for a fact sheet and social media messages to share with your networks.



Crucial Vaccination Conversations: A Roadmap to Engage Women and Their Communities

As women make approximately 80 percent of household decisions about health care in their families, women caregivers play an important role in immunization education. The Society for Women's Health Research created [Crucial Vaccination Conversations: A Roadmap to Engage Women and Their Communities](#), which is a flexible, open-ended tool for community vaccine outreach.



COVID-19 Vaccination & Testing

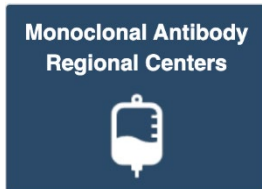
- [COVID-19 Vaccine Eligibility](#)
- [COVID-19 Vaccination in San Diego County](#)
- [Testing in San Diego County](#)
- [COVID-19 Testing Options](#)
- [Video: How to Use a COVID-19 Self-Test](#)



Local Doctors Address COVID-19 Misinformation

An independent panel of local doctors participated in a virtual

event that addressed COVID-19 misinformation brought up by members of the public at the January 11 County Board of Supervisors meeting. Watch the COVID-19 Misinformation Panel in [English](#) and [Spanish](#).



Monoclonal Antibody Therapy

Monoclonal antibodies are used for treatment and prevention to keep eligible individuals from getting very sick and/or hospitalized due to COVID. Monoclonal antibodies are authorized for all ages, including younger pediatric patients and newborns. Call (619) 685-2500 for more information or to schedule an appointment. You are also encouraged to talk to your doctor to see if you are medically eligible for this treatment and to receive a referral. To learn more, visit the [COVID-19 Health Professionals Website](#).

COMMUNITY RESOURCES



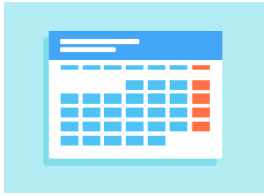
Love Your Heart Week of Action

Join the Heart Health Movement this February! The best way to know if you have high blood pressure is to have it checked, so take control of your heart health by knowing your numbers and what they mean. Make an appointment with your primary care physician or check it with a home blood pressure cuff. Visit LoveYourHeartSD.org to learn more.



Get Your Flu Vaccine!

The influenza vaccine is available at doctors' offices, pharmacies, the County's six Public Health Centers, and local community clinics. Californians can also schedule a flu vaccine appointment on [My Turn](#). [Learn more about the flu](#) and find a vaccination site near you.



Community Testing, Vaccination, & Outreach Events

Visit the [Community Testing, Vaccination, and Outreach Events Calendar](#) for upcoming events in San Diego County. You can also submit events to be added to this calendar online.