

[View this email in your browser](#)



[Facebook](#) | [Twitter](#) | [Instagram](#) | [YouTube](#) | [Tik Tok](#)

TELEBRIEFING

Upcoming Telebriefing will be **Thursday, December 22, 2022, 2:00-3:00 PM**

For listen mode only, call: 1 (669) 900-6833, when prompted, enter the following Meeting ID:
826 2009 8291. Passcode: 242111

[Zoom Meeting Link](#)

[Submit Telebriefing Topics](#)

[Submit Telebriefing Questions](#)

SECTOR ANNOUNCEMENTS

November 23, 2022

The Long-Term Care Sector team wishes you, your colleagues, residents, and all of your loves ones, a very happy Thanksgiving. We are so grateful for all you do to care for some of the most vulnerable individuals in our county.

California has recently secured a limited supply *Status™* COVID-19/Flu A+B CLIA waived antigen tests for point of care testing. CDPH will allocate to skilled nursing facilities (SNFs) and select other congregate living facilities through the MHOAC system. **Facilities must have an active CLIA waiver and follow the requirements outlined** in the [COVID-19 and Flu Distribution Form](#) before ordering tests. If a facility meets all of the requirements, including an active CLIA waiver, they can request up to 150 Status COVID-19/Flu A+B antigen tests by emailing MOC.LOGS.HHSA@sdcounty.ca.gov. Status COVID-19 Influenza A+B Antigen Tests may be used to test residents or healthcare personnel (HCP) within 5 days of symptom onset via anterior nasal or nasopharyngeal specimen collection. Tests should NOT be used to test asymptomatic residents or staff. Please see the following links for additional information: [Status™ COVID-19/Flu A&B](#), [Princeton BioMeditech Corp. Status Letter](#).

Please find information below regarding the latest guidance and resources from county, state, and federal organizations, including new updates:

- [PIN 22-32-ASC](#): 2022 Chaptered Legislation Affecting Adult and Senior Care Facilities: Summary and Implementation.

Please find a summary of important resources the County and other partners are currently offering below:

Influenza

- Visit [Flu Vaccines](#) to locate vaccination sites for staff and mobile residents.
- If you have immobile residents who need their flu vaccine, our County of San Diego Rapid Response Team can assist. Please email COVID-HealthcareStatus@sdcounty.ca.gov and one of our team members can help you.

Vaccines and Boosters

- Visit [COVID-19 Vaccines](#) to locate vaccination sites for staff or mobile residents.

- Our County of San Diego Rapid Response Team can also assist with COVID-19 vaccines and bivalent boosters. Please email COVID-HealthcareStatus@sdcounty.ca.gov and one of our team members can help you.

Testing

- Visit the [County's webpage](#) to find free COVID-19 testing site locations and times.
- If your facility is in need of antigen or Over-The -Counter(no CLIA waiver required) test kits, please email moc.logs.hhsa@sdcounty.ca.gov
- If you have a health plan, you can purchase over-the-counter COVID-19 tests at no cost. See more details [here](#).

Treatment

- Visit [Treatment \(sandiegocounty.gov\)](#) for COVID-19 treatment options near you. Please note since demand for treatment has decreased, our number of local sites has been reduced as well.

For other questions, email COVID-LTC@sdcounty.ca.gov or for more information for long-term care facilities, visit www.coronavirus-sd.com/LTC.

Thank you for your continued efforts and partnership with the County of San Diego!



California Department of Public Health

[AFL 22-23](#) to All Health Care Facilities, November 11, 2022

This AFL outlines the temporary waiver of specific regulations and statutes during the COVID-19 State of Emergency related to use of space. This AFL also outlines the program flexibility process that allows flexibility from regulatory requirements. This AFL also provides guidance to facilities on planning for and responding to pediatric surge related to RSV and other respiratory viruses

[AFL 22-07.1](#) to Skilled Nursing Facilities, October 6, 2022

This AFL notifies SNFs of updated California Department of Public Health (CDPH), Centers for Medicare and Medicaid Services (CMS), and Centers for Disease Control and Prevention (CDC) guidance for improving their infection control and prevention practices to prevent

the transmission of COVID-19, including guidance for visitation. This AFL provides CDPH guidance for group activities and communal dining. This AFL revision announces that, effective September 17, 2022, the visitation requirements outlined in the [August 26, 2021 Public Health Order](#) (PHO) are rescinded. Visitors are no longer required to show proof of vaccination or a negative test to have indoor visitation. Visitors must continue to comply with [CDPH Masking Guidance](#) while visiting in these indoor healthcare settings and should continue to maintain all current infection prevention practices to continue protecting these most vulnerable populations.

[AFL 21-14.2](#) to all Intermediate Care Facilities, October 6, 2022

This AFL notifies all ICF/DD-H-N-CN facilities of the Centers for Medicare and Medicaid Services (CMS) and Centers for Disease Control and Prevention (CDC) guidance for improving their infection control and prevention practices to prevent the transmission of COVID-19, including guidance for visitation. This AFL revision announces that, effective September 17, 2022, the visitation requirements outlined in the [August 26, 2021 Public Health Order](#) (PHO) are rescinded. Visitors are no longer required to show proof of vaccination or a negative test to have indoor visitation. Visitors must continue to comply with [CDPH Masking Guidance](#) while visiting in these indoor healthcare settings and should continue to maintain all current infection prevention practices to continue protecting these most vulnerable populations.

[AFL 22-13.1](#) to Skilled Nursing Facilities, October 5, 2022

This AFL revision provides updated testing recommendations from the California Department of Public Health (CDPH) for SNFs. This AFL revision incorporates the September 13, 2022 amended [Public Health Order](#) which maintains the current vaccination and booster requirement for healthcare personnel (HCP) but rescinds the requirement for routine diagnostic screening testing for unvaccinated exempt HCP and booster-eligible HCP who have not yet received their booster.

[AFL 21-34.4](#) to All Facilities, October 5, 2022

This AFL revision notifies all facilities of the [Public Health Order](#) – Health Care Worker Vaccine Requirement and [State Public Health Order – Adult Care Facilities and Direct Care Worker Vaccine Requirement](#) issued September 13, 2022. The routine diagnostic screening COVID-19 testing requirements for all unvaccinated exempt HCP and booster-eligible HCP who have not yet received their booster are rescinded.

[AFL 22-21](#) to Skilled Nursing Facilities, October 5, 2022

This AFL supersedes AFL 19-22, and releases updated guidance on Enhanced Standard

Precautions for Skilled Nursing Facilities

[AFL 22-13.1](#) to Skilled Nursing Facilities, October 5, 2022

This AFL revision provides updated testing recommendations from the California Department of Public Health (CDPH) for SNFs. This AFL revision incorporates the September 13, 2022 amended [Public Health Order](#) which maintains the current vaccination and booster requirement for healthcare personnel (HCP) but rescinds the requirement for routine diagnostic screening testing for unvaccinated exempt HCP and booster-eligible HCP who have not yet received their booster.

[AFL 22-20](#) to Skilled Nursing Facilities, September 12, 2022

This AFL provides guidance recommending that all SNF residents with symptomatic COVID-19 be evaluated by a prescribing clinician to be considered for COVID-19 therapeutics. In addition, SNFs should evaluate all residents for any oral COVID-19 therapeutics drug-drug interaction risk, renal and hepatic impairment in advance of a COVID-19 diagnosis and indicate such information in charts to facilitate access to appropriate therapeutics when a COVID-19 diagnosis is made. This AFL also provides information regarding available guidance and resources for evaluating, prescribing, and obtaining COVID-19 therapeutics for SNF residents. This AFL encourages SNFs to provide information for healthcare personnel (HCP) who test positive for COVID-19 to obtain treatment with appropriate therapeutics.

[Recent AFLs](#)



California Department of Social Services

NEW! [PIN 22-32-ASC](#) to All Adult and Senior Care Program Licensees, November 18, 2022

This PIN provides a summary of and implementation information for legislation chaptered in 2022 affecting licensed Adult and Senior Care facilities. The changes to the statutes referenced in this PIN become operative January 1, 2023, unless otherwise specified. Important! A summary of and implementation information for legislation chaptered in 2022

affecting criminal record clearances/exemptions and exclusive to Continuing Care Retirement Communities, will be released in forthcoming PINs

[PIN 22-10-CCLD](#) to All Residential Community Care providers, November 15, 2022

This PIN releases the updated estimated Social Security Income (SSI) and State Supplementary Payment (SSP) payment standards effective January 1, 2023 for Non-Medical Out-of-Home Care (NMOHC) - Licensed Facility or Without In-Kind Room and Board.

[PIN 22-31-ASC](#) to All Adult and Senior Care Program Licensees, November 14, 2022

This PIN announced an informational call with Adult and Senior Care (ASC) licensees and their staff on November 16, 2022 to discuss the latest updates in Infection Control and Guidance, including the end of the California COVID-19 State of Emergency and related COVID-19 waivers, and the triple threat of RSV, Flu and COVID-19. CCLD encourages licensees and staff to view the [PowerPoint Presentation](#) from the call.

[PIN 22-09-CCLD](#) to All CCLD Facility Licensees and Providers, November 8, 2022

PIN 22-09-CCLD announces its second live Guardian webinar for all providers on November 15, 2022, from 10:00 AM - 11:30 AM

[PIN 22-30-ASC](#) to All Adult and Senior Care Licensees, November 1, 2022

PIN 22-30-ASC supersedes PIN 22-21-ASC, dated June 29, 2022, and notifies Adult and Senior Care (ASC) licensees and Continuing Care Retirement Community providers that the California Department of Social Services (CDSS) is rescinding all COVID-19 waivers on February 28, 2023. In addition, this PIN advises licensees and providers that all licensing requirements will be reinstated on March 1, 2023.

[PIN 22-29-ASC](#) to All Adult and Senior Care Program Licensees, October 11, 2022

PIN 22-29-ASC supersedes PIN 22-20-ASC, dated June 22, 2022, and informs Adult and Senior Care (ASC) licensees about CDPH resources on COVID-19 vaccines, including how to access COVID-19 vaccines for updated (bivalent) booster doses.

[PIN 22-05.2-ASC](#) to All Adult and Senior Care Program Licensees

PIN 22-05.2-ASC supersedes PIN 22-05.1-ASC, dated March 18, 2022, and notifies all Adult and Senior Care (ASC) licensees of updated COVID-19 vaccination, booster, and testing requirements for all workers in ASC facilities, pursuant to the State Public Health Officer Order of September 13, 2022

[PIN 22-28-ASC](#) to All Adult and Senior Care Program Residential Licensees

PIN 22-28-ASC provides best practices for visitation related to COVID-19 as a result of the State Public Health Officer Order of September 15, 2022. Effective September 17, 2022, the State Public Health Officer Order of September 15, 2022, rescinds the February 11, 2022, State Public Health Officer Order and the Statewide Waiver of Licensing Standards for Visitation in PIN 22-07-ASC, dated February 7, 2022

[PIN 22-06-CCLD](#) to All CCLD Providers and Licensees

PIN 22-06-CCLD notifies all Community Care Licensing Division licensees, providers, and applicants of best practices when initiating a background check and provide step-by-step instructions on how to navigate the application process in the Guardian system.

[PIN 22-15.1-ASC](#) to All Adult and Senior Care Program Residential Licensees, September 1, 2022

PIN 22-15.1-ASC supersedes PIN 22-15-ASC, dated May 13, 2022, and updates the definition of close contact, the recommended timeframe to test after an exposure, and duration of resident quarantine. This PIN also provides guidance related to resident cohorting, isolation and quarantine, staffing considerations, and use of Personal Protective Equipment (PPE) based on the resident's COVID-19 status.

[Recent PINs](#)

COVID-19 UPDATES & RESOURCES

COVID-19 in San Diego County



San Diego County
Respiratory Virus Surveillance Report

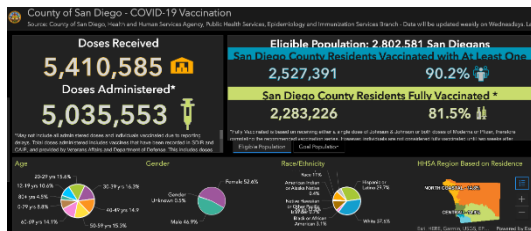
[Respiratory Virus Surveillance Report](#)

(11/17/22)

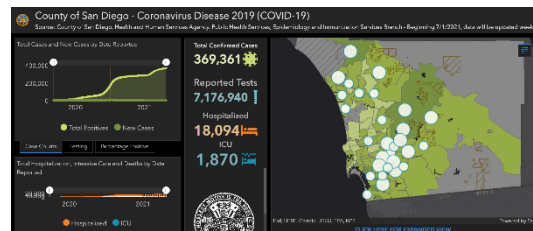
County of San Diego

COVID-19 Weekly Update

[COVID-19 Weekly
Update Presentation](#) (11/17/22)



[County of San Diego - COVID-19 Vaccination Dashboard](#)



[County of San Diego - COVID-19 Dashboard](#)

PREVENTION

COVID-19 Vaccines - Cornerstone of Prevention



Bivalent vaccines are available for all persons age 5 and older. The bivalent vaccine can be given 2 months after the completion of the primary series or after the last monovalent booster.

Please email COVID-HealthcareStatus@sdcounty.ca.gov if your facility would like onsite assistance from the Rapid Response Team (RRT) to administer vaccinations and boosters for immobile residents.

WHAT Is Evusheld?

BE COVIDSAFE ✓

- Evusheld is a medicine with Emergency Use Authorization (EUA) by the Food and Drug Administration (FDA) that gives you extra protection from COVID-19. If you have a weak immune system, you may need this medicine.
- Evusheld contains antibodies, which boost your immune system for up to 6 months and help fight COVID-19.
- **Get Evusheld before you have an exposure to COVID-19!**

WHY Is Evusheld Important?

- Some medicines weaken your immune system. Sometimes vaccines don't work as well when you have a weak immune system.
- People with weak immune systems, even if vaccinated, are at high risk for serious health problems from COVID-19.
- Evusheld is given by injection in a single visit. Evusheld works in addition to the COVID-19 vaccine to protect you before you get COVID-19.

WHO can get Evusheld?

- You must be at least 12 years old and weigh 88 pounds or more, **AND**
- You cannot have COVID-19 now, **AND**
- You cannot have a recent exposure to COVID-19, **AND**
- You must:
 - Have a weak immune system (moderate to severe)
 - Take medicine that weakens your immune system
 - Have received a solid organ transplant and take medicine that weakens your immune system
 - Are allergic to the COVID-19 vaccine
 - Have advanced HIV/AIDS
 - Have a primary immunodeficiency. This means your immune system doesn't have everything it needs to protect you from getting sick.

[Fact Sheet for Patients, Parents And Caregivers Emergency Use Authorization \(EUA\) of EVUSHELD™](#)

[Evusheld Informational Flyer](#)

TREATMENT



PAXLOVID INFORMATIONAL SHEET SUMMARY

ORAL ANTIVIRAL MEDICATIONS TO TREAT MILD TO MODERATE COVID-19

A Prescription Guide for Providers

PAXLOVID is a combination of nirmatrelvir and ritonavir protease inhibitors issued under Emergency Use Authorization (EUA) for treatment of mild to moderate COVID-19 in adults and children older than 12 years and weighing at least 40 kg. Nirmatrelvir inhibits the SARS-CoV-2 main protease preventing viral replication. Ritonavir inhibits the CYP3A-mediated metabolism of nirmatrelvir, resulting in increased plasma concentrations of nirmatrelvir.

The medication has EUA for those at high risk for progression to severe COVID-19, including hospitalization and death. PAXLOVID is not authorized for patients requiring hospitalization or for pre-exposure or post-exposure prophylaxis.

Dosage and Administration

- Initiate as soon as possible after diagnosis of COVID-19 and **within 5 days** of symptom onset
- 300 mg (two 150-mg tablets) nirmatrelvir and one 100-mg tablet ritonavir all taken together twice daily for 5 days.
- For moderate renal impairment (eGFR ≥ 30 to < 60 mL/min): 150 mg nirmatrelvir (one 150-mg tablet) with 100 mg ritonavir (one 100-mg tablet) taken together twice daily for 5 days.
- PAXLOVID is not recommended in patients with severe renal impairment (eGFR < 30 mL/min) or severe hepatic impairment (Child Pugh Class C)
- Take with or without food. Swallow all tablets whole – do not chew, break, or crush tablets.
- If a dose is missed within 8 hours, take as soon as possible and resume normal dosing schedule. If missed by more than 8 hours, do not take the missed dose. Instead take the next dose at the regularly scheduled time.



Paxlovid Oral Therapy - First Line of Therapy

Paxlovid is a combination of protease inhibitors to treat mild to moderate COVID-19 in high-risk outpatient adults and children over 12, weighing at least 40kg. Paxlovid reduces the relative risk of hospitalization and mortality by up to 88%. The potential for Drug Interactions can be checked using the [Liverpool COVID-19 Interactions Tool](#). Please note that there is potential for extensive drug-drug interaction which can either result in high levels of co-administered drug or result in increased clearance. Additionally, dosage and administration must be modified for patients experiencing Renal failure.

Paxlovid Availability:

Paxlovid requires a prescription. The [therapeutics locator](#) identifies pharmacies and community health centers that may carry Paxlovid.

[Paxlovid Informational Flyer](#)

BEBTELOVIMAB INFORMATIONAL SHEET SUMMARY

4 April 2022



Monoclonal Antibody for Treatment of COVID-19

A Prescription Guide for Providers

The U.S. Food and Drug Administration (FDA) issued Emergency Use Authorization (EUA) of intravenous bebtelovimab monoclonal antibody for the treatment of mild-to-moderate COVID-19 in adults and pediatric patients (12 years of age and older weighing at least 40 kg [88 lbs]). Bebtelovimab is a human immunoglobulin G1 (IgG1 variant) monoclonal antibody composed of 449 amino acids produced by a cell culture or cell line. Bebtelovimab binds the spike protein of SARS-CoV-2 virus and blocks attachment to the human ACE2 receptor. Of significance, bebtelovimab is active against the BA.2 Omicron variant.

Dosage and Administration

Dosage of bebtelovimab in adults and pediatric patients (≥ 12 years of age and weighing at least 40 kg [88 lbs]) is 175 mg/2 mL. The medication should be administered as soon as possible after positive results of SARS-CoV-2 viral testing and within 7 days of symptom onset. The medication is administered as a single intravenous injection over at least 30 seconds. After the entire contents of the syringe has been administered, flush the injection line with 0.9% sodium chloride to ensure delivery of the required dose.



Bebtelovimab Intravenous - Minimum 30 Second Infusion

Monoclonal antibody treatment for mild to moderate COVID-19 reduces risk of hospitalization and death 70% in those with a risk of progression to severe COVID-19.

Bebtelovimab Availability:

Bebtelovimab is available at Vista Community Clinic and Family Health Centers of San Diego in Hillcrest. Both sites are open Tuesday through Friday. Telehealth visits offer a virtual visit and prescription for treatment. Call 1-888-897-1244. You can also find sites providing treatment at the [COVID-19 Test to Treat Locator](#).

If your skilled nursing facility is interested in monoclonal antibody treatment, email MCSDNursingM_MAT.HHSA@sdcounty.ca.gov for more information. Please note that the County is available to provide both the drug **and** the administration for qualifying patients at your facility.

If your facility is interested in carrying Bebtelovimab, email moc.logs.hhsa@sdcounty.ca.gov to learn more about becoming a provider.

[Bebtelovimab Informational Flyer](#)



Federal Retail Pharmacy Program (FRPP) Update on COVID-19 Vaccines

The CDC allocates COVID-19 vaccines directly to enrolled retail and LTC pharmacies. Three LTC-specific groups (MHA, Innovatix-PharMerica, and GeriMed) receive federal doses and allocate them to member pharmacies who can then provide vaccines to LTC facilities. Not every LTC pharmacy in California is enrolled in the the Federal Retail Pharmacy Program (FRPP). To request vaccines from your contracted LTC pharmacy:

1. Enroll in the San Diego Immunization Registry: <http://www.sdiz.org/cair-sdir/enrollment.html>
2. Contact your pharmacy to determine if they are enrolled in the FRPP.
 - If the LTC pharmacy is enrolled in the FRPP, the pharmacy can subcontract with facilities to also administer the vaccine, and the facility does NOT need to enroll as a vaccine provider.
 - If the LTC pharmacy is **NOT** enrolled in the FRPP, facilities can register to be a vaccinator through <https://mycavax.cdph.ca.gov/s/>.
3. If your contracted pharmacy cannot assist, you may request assistance from other San Diego LTC pharmacies enrolled in the FRPP:
 - Guardian Pharmacy Services (MHA): cvrs@guardianpharmacy.net
 - Omnicare of San Diego: Chadd.Eno@omnicare.com
 - Pharmerica (Innovatix): ImmunizeLTC@pharmerica.com
 - SNP Pharmacy LLC (MHA): vaccines@snp-rx.com

UPDATED: Please view contact information for [additional retail pharmacies](#) that offer on-site clinics:

If you have residents that are immobile or unable to leave the facility (such as those with dementia or behavioral health challenges) and the resources above are not able to accommodate your facility for an on-site vaccination clinic, please email COVID-HealthCareStatus@sdcounty.ca.gov.



CDC Streamlines COVID-19 Guidance

Starting August 11, 2022, the Centers for Disease Control and Prevention streamlined its COVID-19 guidance to help people better understand their risk, how to protect themselves and others, what actions to take if exposed to COVID-19, and what actions to take if they are sick or test positive for the virus. See the [CDC website](#) for more information.

CDC COVID-19 Community Level:



San Diego County Surge has Experts Concerned About Long COVID-19

San Diego County has moved into the high-risk level for

COVID-19. Case numbers have continued to increase over the last few weeks, which has experts worried about the risk for severe outcomes from infection and long COVID-19. To learn more view the [article](#).



COVID-19 Resources

Visit these links for quick COVID-19 resources in San Diego County.

- [COVID-19 Vaccine & Booster](#)
- [What to do if you have COVID-19](#)
- [What to do if you have been exposed to COVID-19](#)
- [COVID-19 Treatment](#)
- [Free At-Home COVID-19 Tests](#)

MONKEYPOX RESOURCES & UPDATES



Monkeypox Home Isolation Guidance

On August 18th, 2022 the CDPH released new Monkeypox (MPX) Home Isolation Guidance for people with confirmed MPX and those with MPX symptoms who are waiting to be evaluated or waiting for test results. Please visit [CDPH MPX website](#) for more information.



San Diego County Declares Monkeypox a Public Health Emergency

On August 1, 2022, Governor Gavin Newsom declared a State of Emergency as part of California's ongoing response to the monkeypox outbreak. On August 2, 2022, the County of San

Diego followed suit by declaring monkeypox a Public Health Emergency.

Keep yourself and your family safe by practicing the following health and harm reduction strategies:

1. Limit close skin to skin contact with multiple partners
2. Know the Signs: Check yourself and ask your partner(s) about recent rashes and illnesses
3. See your healthcare provider if you are experiencing symptoms

For more information visit San Diego County's [monkeypox website](#) and sign up to get [County News Center stories](#) emailed directly to you.



What is Monkeypox?

Anyone can get monkeypox. While risk remains low, it is important to stay informed about how it spreads and contact your health provider if you have been exposed or have symptoms. To learn more about monkeypox please visit the California Department of Public Health [website](#).

COMMUNITY RESOURCES



Be Prepared for Wildfire & Public Safety

SDG&E continually monitors weather and other climate conditions and may have to shut off power to help prevent a wildfire. All residents in San Diego county could be affected and should be prepared. To learn how to stay informed and how to be prepared visit the [SDGE Wildfire Safety website](#).

SD Emergency App



Download the free SD Emergency App to help you plan, prepare, stay informed and recover from an emergency. Find out more by visiting the [Ready San Diego website](#).

This email was sent to Laura.DelFierro@sdcounty.ca.gov

[Update your email preferences](#) or [unsubscribe from this list](#).

County of San Diego • 1255 Imperial Ave Ste 720 • County Of San Diego / Office Of Strategy And Innov •
San Diego, CA 92101-7402 • USA



LIVEWELLSD.ORG



Urgent Need for Blood

There is a critical need for all blood types, and local patients rely on caring blood donors like you to stay healthy and thrive! Make an appointment today at sandiegobloodbank.org/donate or call (619) 400-8251.