

[View this email in your browser](#)



[Facebook](#) | [Twitter](#) | [Instagram](#) | [YouTube](#) | [Tik Tok](#)

TELEBRIEFING

Upcoming Telebriefing will be **Thursday, March 23, 2023, 2:00-3:00 PM**
For listen mode only, call: 1 (669) 900-6833, when prompted, enter the following Meeting
ID: 826 2009 8291. Passcode: 242111

[Zoom Meeting Link](#)

[Submit Telebriefing Topics](#)

[Submit Telebriefing Questions](#)

SECTOR ANNOUNCEMENTS

March 17, 2023

On April 3, mask mandates for healthcare and long-term care facilities will no longer be in effect. It is important for staff and residents to get vaccinated and boosted. If your facility is in need of onsite vaccination assistance, please email COVID-HealthcareStatus@sdcountry.ca.gov and one of our team members can help you.

Additionally, the Community Care Licensing Division (CCLD) released [PIN 23-05-ASC](#) to announce an informational call about the end of the COVID-19 State of Emergency and recently released Public Health Orders and guidance; reporting requirements; Norovirus; and anticipated new guidance for Adult and Senior Care (ASC) licensees and their staff. If you missed the informational call, you can still view the [PowerPoint Presentation](#). We will be sharing new PINs and AFLs in this update when they are released.

Influenza

- Visit [Flu Vaccines](#) to locate vaccination sites for staff and mobile residents.
- If you have immobile residents who need their flu vaccine, our County of San Diego Rapid Response Team can assist. Please email COVID-HealthcareStatus@sdcounty.ca.gov and one of our team members can help you.

Vaccines and Boosters

- Visit [COVID-19 Vaccines](#) to locate vaccination sites for staff or mobile residents.
- Our County of San Diego Rapid Response Team can also assist by setting up a team to come on site and provide COVID-19 vaccines and bivalent boosters. Please email COVID-HealthcareStatus@sdcounty.ca.gov and one of our team members can help you.

Testing

- Visit the [County's webpage](#) to find free COVID-19 testing site locations and times.
- If your facility is in need of antigen or Over-The -Counter(no CLIA waiver required) test kits, please email moc.logs.hhsa@sdcounty.ca.gov
- If you have a health plan, you can purchase over-the-counter COVID-19 tests at no cost. See more details [here](#).
- The United States Postal Services has re-initiated test distribution, and each household can order four free COVID-19 tests. The order form can be found here: <https://special.usps.com/testkits>

Treatment

- If you have insurance, contact your doctor, urgent care center, or visit a [Test-to-Treat](#) location. You can get Paxlovid delivered to your home or facility via [Walgreens.com](#) and [riteaid.com](#).
- Skilled Nursing Facilities please work with your pharmacy to obtain and administer remdesivir. Retail and Specialty pharmacies can purchase remdesivir (Veklury) on behalf of SNF if the pharmacy can attest that the facility will administer it to their residents.
- If you don't have insurance or cannot reach a provider within 24 hours, visit [Sesamecare.com/covidca](#) or call 833-686-5051 to make a free phone or video appointment.
- If you need help finding treatment, call the COVID-19 hotline 833-422-4255.

For other questions, email COVID-LTC@sdcounty.ca.gov or for more information for long-term care facilities, visit www.coronavirus-sd.com/LTC.

Thank you for your continued efforts and partnership with the County of San Diego!



California Department of Public Health

[AFL 23-15](#) to Skilled Nursing Facilities, March 10, 2023

This AFL notifies SNFs and interested stakeholders that the Center for Health Care Quality (CHCQ) is holding a stakeholder meeting on March 29, 2023, from 10:00 am to 12:00 pm to discuss SNF application fees. Please use the [Zoom Registration link](#) to register. When choosing an audio connection, select "Phone Call."

[AFL 23-13](#) to All Facilities, February 8, 2023

In accordance with the end of the declared COVID-19 state of emergency, this AFL reminds facilities that the temporary waivers specified in this AFL will expire February 28, 2023:

[AFL 20-26.13](#)

[AFL 20-30.9](#)

[AFL 20-35.8](#)

[AFL 20-40.5](#)

[AFL 20-49.6](#)

[AFL 20-57.5](#)

[AFL 21-36.3](#)

All facilities must be in compliance with the statutory and regulatory requirements by March 1, 2023.

[AFL 23-12](#) to Skilled Nursing Facilities, January 24, 2023

This AFL revision updates recommendations for PPE, resident placement/movement, and staffing based on the residents' COVID-19 status. This revision includes clarifications to recommendations for eye protections and N95 respirators.

[AFL 22-07.2](#) to Skilled Nursing Facilities, January 23, 2023

This AFL notifies SNFs of updated California Department of Public Health (CDPH), Centers for Medicare and Medicaid Services (CMS), and Centers for Disease Control and Prevention (CDC) guidance for improving their infection control and prevention practices to prevent the transmission of COVID-19, including guidance for visitation.

This AFL provides CDPH guidance for group activities and communal dining. This AFL announces that, effective September 17, 2022, the visitation requirements outlined in the [August 26, 2021 Public Health Order](#) (PHO) are rescinded. Visitors are no longer required to show proof of vaccination or a negative test to have indoor visitation. Visitors must continue to comply with [CDPH Masking Guidance](#) while visiting in these indoor healthcare settings and should continue to maintain all current infection prevention practices to continue protecting these most vulnerable populations. This revision provides additional clarity regarding the use of passive screening methods for visitors.

[AFL 21-34.5](#) to All Facilities, January 23, 2026

This AFL notifies all facilities of the [Public Health Order – Health Care Worker Vaccine Requirement](#) and [State Public Health Order – Adult Care Facilities and Direct Care Worker Vaccine Requirement](#) issued September 13, 2022. The routine diagnostic screening COVID-19 testing requirements for all unvaccinated exempt HCP and booster-eligible HCP who have not yet received their booster are rescinded.

This revision clarifies that all HCP who provide services or work in health care facilities must be fully vaccinated and boosted for COVID-19, unless exempt. This revision also updates the vaccine booster dose requirements in the California Immunization Requirements for Covered HCP Table.

[AFL 23-01](#) to Skilled Nursing Facilities and Intermediate Care Facilities, January 18, 2023

This AFL notifies SNFs and ICFs of the chaptering of [AB 895 \(Chapter 577, Statutes 2022\)](#), requiring these licensed facilities to provide prospective residents or their representative with a written notice about local long-term care ombudsman programs and specified websites prior to or at the time of admission. AB 895 also requires these facilities to update their grievance forms to include the ombudsman program information, the

California Department of Public Health's (CDPH's) information, and how to file a grievance.

[AFL 23-03](#) to Skilled Nursing Facilities, Hospice Facilities and Intermediate Care Facilities, January 18, 2023

This AFL notifies all HOFAs, SNFs, and ICFs of the chaptering of [AB 1852 \(Chapter 111, Statutes of 2022\)](#), expanding current authorization for use of automated drug dispensing systems (ADDS) to include automated unit dose systems (AUDS) and allowing HOFAs to use either an ADDS or AUDS.

[AFL 23-06](#) to Skilled Nursing Facilities, January 18, 2023

This AFL notifies SNFs of the chaptering of [AB 2511 \(Chapter 788, Statutes of 2022\)](#) requiring SNFs to have an alternative source of power for no fewer than 96 hours during any type of power outage by January 1, 2024.

[AFL 23-09](#) to All Facilities, January 18, 2023

This AFL reminds licensed health facilities of requirements to report outbreaks and unusual infectious disease occurrences to their local health department (LHD) and Licensing and Certification District Office and provides investigation and reporting thresholds for reporting for COVID-19. This AFL revision incorporates updated joint Council for Outbreak Response – Healthcare-Associated Infections and Antimicrobial Resistance (CORHA) and Council of Territorial Epidemiologists (CSTE) outbreak investigation and reporting thresholds for hospitals and long-term care facilities

[AFL 22-31](#) to Skilled Nursing Facilities and General Acute Care Hospitals, December 12, 2022

This AFL provides guidance for admission and readmission of skilled nursing facility (SNF) residents during seasonal hospital surges and the COVID-19 pandemic. This AFL also provides guidance on working with local public health departments (LHD) and hospital discharge planners to ensure appropriate placement of resident following hospital discharge. This AFL revision includes updated guidance based on SARS-CoV-2 testing and management of new SNF admissions and readmissions.

[AFL 21-08.9](#) to Skilled Nursing Facilities and Hospitals, December 2, 2022

The purpose of this AFL is to provide hospitals and SNFs with updated guidance on:

- Exposure risk assessment and management of asymptomatic HCP with SARS-CoV-2 exposures
- Work restrictions for HCP diagnosed with SARS-CoV-2 infection (isolation)

- This revision incorporates updated Centers for Disease Control and Prevention (CDC) guidance on [Interim Guidance for Managing Healthcare Personnel with SARS-CoV-2 Infection or Exposure to SARS-CoV-2](#) and [Strategies to Mitigate Healthcare Personnel Staffing Shortages](#).
- Pursuant to [Welfare and Institutions Code section 14126.033](#) a SNF's receipt of the annual increase in the weighted average Medi-Cal reimbursement rate may be conditioned on the facility's good faith compliance with CDPH AFLs related to the COVID-19 Public Health Emergency, as a result the recommendations included in this AFL are requirements for SNFs. CDPH is also requesting updated AFL recipient information.

Recent AFLs



California Department of Social Services

NEW! [PIN 23-05-ASC](#) to All Adult and Senior Care Program Licensees, March 10, 2023

This PIN announced an upcoming informational call about the end of the COVID-19 State of Emergency and recently released Public Health Orders and guidance; reporting requirements; Norovirus; and anticipated new guidance for Adult and Senior Care (ASC) licensees and their staff on March 15, 2023. Please see the [PowerPoint Presentation](#) from the call.

[PIN 23-05-CCLD](#) to All CCLD Facility Licensees and Providers, March 2, 2023

This PIN provides updated guidance to applicants, licensees, and providers, and agencies regarding a change in how transfers of a criminal record clearance or exemption are requested, including the requirement for licensees to verify the individual's identity

[PIN 23-04-CCLD](#) to Adult and Senior Care Program Licensees, Home Care Organization Licensees and Home Care Aides, February 27, 2023

This PIN supersedes PIN 20-13-ASC, dated April 16, 2020, and updated April 27, 2020; PIN 20-15-ASC, dated April 24, 2020; PIN 20-22-ASC, dated June 25, 2020; PIN 20-32-

ASC, dated September 28, 2020; and PIN 21-34-ASC, dated July 30, 2021, and provides updated information on reporting requirements for COVID-19 outbreaks in licensed facilities. COVID-19 cases/outbreaks reporting are best practice recommendations for Home Care Organization licensees or Home Care Aides at this time.

[PIN 23-04-ASC](#) to All Adult and Senior Care Program Licensees, February 13, 2023
This PIN announces a live Guardian webinar for all Adult and Senior Care Licensees and Home Care Organizations on February 22, 2023, from 11:00 AM - 12:00 PM

[PIN-23-03-CCLD](#) to Adult and Senior Care Program Licensees, February 13, 2023
This PIN supersedes [PIN 22-05-CCLD](#), dated September 13, 2022. This PIN informs licensees, providers, and home care aides that Governor Newsom has rescinded a Proclamation of a State of Emergency for California in response to monkeypox (mpox), provides general information and resources related to the mpox virus, and reminders on reporting requirements.

[PIN 23-03-ASC](#) to All Adult and Senior Care Program Licensees, February 10, 2023
This PIN announces an upcoming informational call about resumption of inspections using the full CARE Tools, the end of the COVID-19 State of Emergency, and newly updated guidance on screening, testing, isolation and quarantine, and masking and therapeutics with Adult and Senior Care (ASC) licensees and their staff on February 15, 2023.

[PIN 23-02-ASC](#) to All Adult and Senior Care Program Licensees, February 9, 2023
This PIN supersedes PIN 22-16-ASC, dated May 16, 2022; PIN 22-15.1-ASC, dated September 1, 2022; PIN 22-09-ASC, dated February 14, 2022; PIN 21-38-ASC, dated August 19, 2021; and supersedes PIN 20-23-ASC in part, dated June 26, 2020. This PIN provides updated guidance for Adult and Senior Care (ASC) facility licensees on testing, isolation and quarantine, and masking for facility staff and residents. In addition, this PIN provides updated guidance for Continuing Care Retirement Communities (CCRCs).

[PIN 23-01-ASC](#) to All Adult and Senior Care Facility Licensees, January 30, 2023
This PIN announces the resumption of inspections using the Community Care Licensing Division's (CCLD) full inspections tools, known as CARE Tools, beginning March 1, 2023.

[PIN 22-14-CCLD](#) to All Adult and Senior Care Licensees, December 30, 2022
This PIN provides updated guidance to applicants, providers, and agencies regarding the Criminal Record Statement and the addition of simplified criminal record exemption criteria to the Health and Safety Code. These changes are effective January 1, 2023.

[Adult and Senior Care Program Winter 2022/2023 Quarterly Update](#)

[PIN 22-13-CCLD](#) to Adult and Senior Care Program Licensees, December 21, 2022

This PIN announces the availability of the Community Care Licensing Complaint Web Page. The new web page offers a way to file a complaint directly on the Community Care Licensing Division (CCLD) website.

[PIN 22-35-ASC](#) to All Adult and Senior Care Program Licensees, December 15, 2022

This PIN announces an informational call with Adult and Senior Care (ASC) licensees and their staff on December 21, 2022 to discuss the latest on new visitation guidance, clarification of current guidance, holiday safety, and winter viruses. CCLD also encourages licensees and staff to view the [PowerPoint Presentation](#) from the call.

[PIN 22-11-CCLD](#) to All CCLD Facility Licensees and Providers, December 8, 2022

This PIN announces a live Guardian webinar for all providers on December 20, 2022, from 10:00 AM - 11:30 AM.

[PIN 22-28. 1-ASC](#) to All Adult and Senior Care Program Residential Licensees, November 29, 2022

This PIN provides updated best practices for visitation related to COVID-19 as a result of the State Public Health Officer Order of September 15, 2022. This PIN specifically updates best practices related to screening protocols for visitors and best practices related to masking for residents who have had close contact with an individual with a COVID-19 infection.

[PIN 22-31-ASC](#) to All Adult and Senior Care Program Licensees, November 14, 2022

This PIN announced an informational call with Adult and Senior Care (ASC) licensees and their staff on November 16, 2022 to discuss the latest updates in Infection Control and Guidance, including the end of the California COVID-19 State of Emergency and related COVID-19 waivers, and the triple threat of RSV, Flu and COVID-19. CCLD encourages licensees and staff to view the [PowerPoint Presentation](#) from the call.

[Recent PINs](#)

COVID-19 UPDATES & RESOURCES

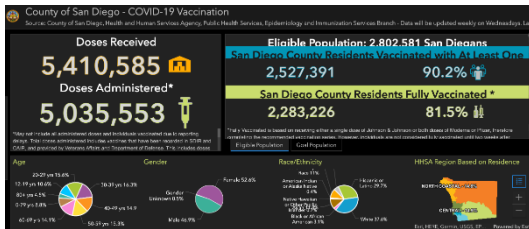
COVID-19 in San Diego County



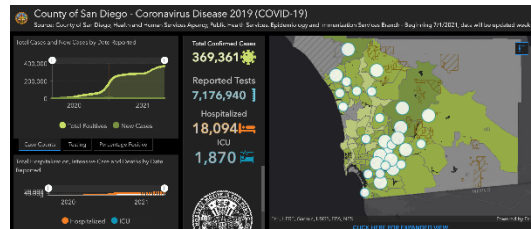
[Respiratory Virus Surveillance Report](#)
(3/16/23)



[COVID-19 Weekly Update Presentation](#) (2/23/23)



[County of San Diego - COVID-19 Vaccination Dashboard](#)



[County of San Diego - COVID-19 Dashboard](#)

PREVENTION

COVID-19 Vaccines - Cornerstone of Prevention



Bivalent vaccines are available for all persons age 6 months and older. The bivalent vaccine can be given 2 months after the completion of the primary series or after the last monovalent booster.

Please email COVID-HealthcareStatus@sdcounty.ca.gov if your facility would like onsite assistance from the Rapid Response Team (RRT) to administer vaccinations and boosters for immobile residents.

TREATMENT



PAXLOVID INFORMATIONAL SHEET SUMMARY

ORAL ANTIVIRAL MEDICATIONS TO TREAT MILD TO MODERATE COVID-19

A Prescription Guide for Providers

PAXLOVID is a combination of nirmatrelvir and ritonavir protease inhibitors issued under Emergency Use Authorization (EUA) for treatment of mild to moderate COVID-19 in adults and children older than 12 years and weighing at least 40 kg. Nirmatrelvir inhibits the SARS-CoV-2 main protease preventing viral replication. Ritonavir inhibits the CYP3A-mediated metabolism of nirmatrelvir, resulting in increased plasma concentrations of nirmatrelvir.

The medication has EUA for those at high risk for progression to severe COVID-19, including hospitalization and death. PAXLOVID is not authorized for patients requiring hospitalization or for pre-exposure or post-exposure prophylaxis.

Dosage and Administration

- Initiate as soon as possible after diagnosis of COVID-19 and **within 5 days** of symptom onset
- 300 mg (two 150-mg tablets) nirmatrelvir and one 100-mg tablet ritonavir all taken together twice daily for 5 days.
- For moderate renal impairment (eGFR ≥ 30 to < 60 mL/min): 150 mg nirmatrelvir (one 150-mg tablet) with 100 mg ritonavir (one 100-mg tablet) taken together twice daily for 5 days.
- PAXLOVID is not recommended in patients with severe renal impairment (eGFR < 30 mL/min) or severe hepatic impairment (Child Pugh Class C)
- Take with or without food. Swallow all tablets whole – do not chew, break, or crush tablets.
- If a dose is missed within 8 hours, take as soon as possible and resume normal dosing schedule. If missed by more than 8 hours, do not take the missed dose. Instead take the next dose at the regularly scheduled time.



Paxlovid Oral Therapy - First Line of Therapy

Paxlovid is a combination of protease inhibitors to treat mild to moderate COVID-19 in high-risk outpatient adults and children over 12, weighing at least 40kg. Paxlovid reduces the relative risk of hospitalization and mortality by up to 88%. The potential for Drug Interactions can be checked using the [Liverpool COVID-19 Interactions Tool](#). Please note that there is potential for extensive drug-drug interaction which can either result in high levels of co-administered drug or result in increased clearance. Additionally, dosage and administration must be modified for patients experiencing Renal failure.

Paxlovid Availability:

Paxlovid requires a prescription. The [therapeutics locator](#) identifies pharmacies and community health centers that may carry Paxlovid.

[Paxlovid Informational Flyer](#)



Federal Retail Pharmacy Program (FRPP) Update on COVID-19 Vaccines

The CDC allocates COVID-19 vaccines directly to enrolled retail and LTC pharmacies. Three LTC-specific groups (MHA, Innovatix-PharMerica, and GeriMed) receive federal doses and allocate them to member pharmacies who can then provide vaccines to LTC facilities. Not every LTC pharmacy in California is enrolled in the the Federal Retail Pharmacy Program (FRPP). To request vaccines from your contracted LTC pharmacy:

1. Enroll in the San Diego Immunization Registry: <http://www.sdiz.org/cair-sdir/enrollment.html>
2. Contact your pharmacy to determine if they are enrolled in the FRPP.
 - o If the LTC pharmacy is enrolled in the FRPP, the pharmacy can subcontract with facilities to also administer the vaccine, and the facility does NOT need to enroll as a vaccine provider.

- If the LTC pharmacy is **NOT** enrolled in the FRPP, facilities can register to be a vaccinator through <https://mycavax.cdph.ca.gov/s/>.
- 3. If your contracted pharmacy cannot assist, you may request assistance from other San Diego LTC pharmacies enrolled in the FRPP:
 - Guardian Pharmacy Services (MHA): cvrs@guardianpharmacy.net
 - Omnicare of San Diego: Chadd.Eno@omnicare.com
 - Pharmerica (Innovatix): ImmunizeLTC@pharmerica.com
 - SNP Pharmacy LLC (MHA): vaccines@snp-rx.com

UPDATED: Please view contact information for [additional retail pharmacies](#) that offer on-site clinics:

If you have residents that are immobile or unable to leave the facility (such as those with dementia or behavioral health challenges) and the resources above are not able to accommodate your facility for an on-site vaccination clinic, please email COVID-HealthCareStatus@sdcounty.ca.gov.



CDC Streamlines COVID-19 Guidance

Starting August 11, 2022, the Centers for Disease Control and Prevention streamlined its COVID-19 guidance to help people better understand their risk, how to protect themselves and others, what actions to take if exposed to COVID-19, and what actions to take if they are sick or test positive for the virus. See the [CDC website](#) for more information.



COVID-19 Resources

Visit these links for quick COVID-19 resources in San Diego County.

- [COVID-19 Vaccine & Booster](#)
 - [What to do if you have COVID-19](#)
 - [What to do if you have been exposed to COVID-19](#)
 - [COVID-19 Treatment](#)
 - [Free At-Home COVID-19 Tests](#)
-

MONKEYPOX RESOURCES & UPDATES



Monkeypox Home Isolation Guidance

On August 18th, 2022 the CDPH released new Monkeypox (MPX) Home Isolation Guidance for people with confirmed MPX and those with MPX symptoms who are waiting to be evaluated or waiting for test results. Please visit [CDPH MPX website](#) for more information.



What is Monkeypox?

Anyone can get monkeypox. While risk remains low, it is important to stay informed about how it spreads and contact your health provider if you have been exposed or have symptoms. To learn more about monkeypox please visit the California Department of Public Health [website](#).

COMMUNITY RESOURCES



Love Your Heart is an annual event in which organizations from across the U.S. and Mexico join together to provide free blood pressure screenings to the public.

If you'd like to get involved, please see [this flyer](#) which includes links for applying to be a host site and the volunteer interest form.

Please visit LOVEYOURHEARTSD.org for more information. If you have any questions, please email LoveYourHeartSD@sdcounty.ca.gov.



Be Prepared for Wildfire & Public Safety

SDG&E continually monitors weather and other climate conditions and may have to shut off power to help prevent a wildfire. All residents in San Diego county could be affected and should be prepared. To learn how to stay informed and how to be prepared visit the [SDGE Wildfire Safety website](#).



SD Emergency

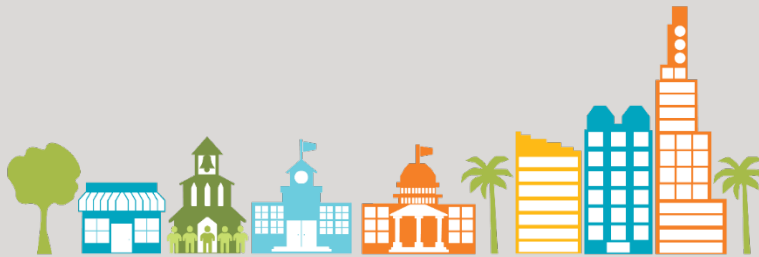
SD Emergency App

Download the free SD Emergency App to help you plan, prepare, stay informed and recover from an emergency. Find out more by visiting the [Ready San Diego website](#).

This email was sent to Laura.DelFierro@sdcounty.ca.gov

[Update your email preferences](#) or [unsubscribe from this list](#).

County of San Diego · 1255 Imperial Ave Ste 720 · County Of San Diego / Office Of Strategy And Innov ·
San Diego, CA 92101-7402 · USA



LIVEWELLSD.ORG



Urgent Need for Blood

There is a critical need for all blood types, and local patients rely on caring blood donors like you to stay healthy and thrive!

Make an appointment today at sandiegobloodbank.org/donate or
call (619) 400-8251.