



## Live Well San Diego LONG-TERM CARE FACILITIES



[Facebook](#) | [Twitter](#) | [Instagram](#) | [YouTube](#) | [Tik Tok](#)

### TELEBRIEFING

Upcoming Telebriefing will be **Thursday, April 28, 2022, 2:00-3:00 PM**

**Please note: starting in March, these telebriefings will transition to one session per month - the fourth Thursday of every month**

[Zoom Meeting Link](#)

[Submit Telebriefing Questions](#)

For listen mode only, call: 1 (669) 900-6833, when prompted, enter the following Meeting ID: 826 2009 8291. Passcode: 242111

#### **Telebriefing Slides and Recording: March 24, 2022**

**NEW:** Dr. Raymond Chinn, County of San Diego Medical Consultant, [COVID-19 Updates](#)

**NEW:** Jennifer Wheeler, County of San Diego, [LTC Updates](#)

[Telebriefing Recording](#)

### SECTOR ANNOUNCEMENTS

March 29, 2022

As we reach the two-year mark since COVID-19 was declared a global pandemic, we would like thank all of you for your courageous efforts to protect your residents and staff during these very challenging times.

Exciting news! As we get back to our new version of normal, we are planning the first emergency preparedness exercise specifically for all of our long-term care facilities. This exercise will be conducted **Thursday July 21, 2022**. This exercise is meant to promote awareness at each facility for disaster preparedness plans, countywide coordination, and helps meet Center for Medicare and Medicaid Emergency Preparedness requirements. We are looking for 10-15 facility partners to join the exercise planning team. Email us at [COVID-HealthcareStatus@sdcounty.ca.gov](mailto:COVID-HealthcareStatus@sdcounty.ca.gov) to find out how you can participate in the exercise and join the planning team.

In addition, we would like to share resources for COVID-19 treatment. [Paxlovid](#) is an antiviral treatment for high-risk folks who have been newly diagnosed with mild or moderate COVID that can significantly reduce the need for hospitalization. This treatment, and other COVID-19 therapies, can be located at a local pharmacy by utilizing the [COVID-19 Therapeutics Locator](#). If you have difficulties utilizing this tool, please reach out to [COVID-HealthcareStatus@sdcounty.ca.gov](mailto:COVID-HealthcareStatus@sdcounty.ca.gov) for further assistance. **PAXLOVID is not authorized for treatment in patients requiring hospitalization or pre-exposure or post-exposure prophylaxis, those under 12 years of age and those weighing less than 88 pounds.** You can find more information on Paxlovid [here](#).

Finally, if you are a DSS facility, please see [PIN 22-11-ASC](#) which outlines organizational changes to Community Care Licensing including San Diego County. Please refer to the zip codes the San Diego ASC Regional Offices cover as your facility may now be under a new Regional Manager and office.

Please see below for additional guidance and community resources. You can find the latest communication tools, resources, and guidance from CDPH in their weekly newsletters. Click [here](#) to view their latest update.

Please find a summary of important resources the County and other partners are currently offering below:

## **Vaccines**

- Visit [COVID-19 Vaccines](#) to locate vaccination sites for staff
- If you have immobile residents who need vaccines or boosters, our County of San Diego Rapid Response Team can assist. Please email [COVID-HealthcareStatus@sdcounty.ca.gov](mailto:COVID-HealthcareStatus@sdcounty.ca.gov) and one of our team members can assist you.

## Testing

- Visit the [County's webpage](#) to find COVID-19 testing site locations and times
- If your facility is in need of antigen test kits, please email [logs.testing.hhsa@sdcounty.ca.gov](mailto:logs.testing.hhsa@sdcounty.ca.gov)
- if you're a SNF and in need of test kits for visitors, please email [MOC.LOGS.HHSA@sdcounty.ca.gov](mailto:MOC.LOGS.HHSA@sdcounty.ca.gov)
- If you are a California Department of Social Services (CDSS)-licensed facility and in need of Over-The-Counter COVID-19 test kits for visitors, please email [moc.logs.hhsa@sdcounty.ca.gov](mailto:moc.logs.hhsa@sdcounty.ca.gov). These kits do not require a CLIA waiver.
- You can request free, at-home COVID-19 tests for personal use from the federal government. See more details [here](#). U.S. households can place a total of 2 separate orders for free, at-home COVID-19 rapid tests (4 tests per order). If an order was previously placed for your address, you can place a second order now.
- If you have a health plan, you can purchase over-the-counter COVID-19 tests at no cost. See more details [here](#).

Please find information below regarding the latest guidance and resources from county, state, and federal organizations, including new updates:

- [PIN 22-05.1 ASC](#) Notifies all Adult and Senior Care (ASC) licensees of updated COVID-19 vaccination and booster requirements for all workers of ASC facilities, pursuant to the State Public Health Officer Order of February 22, 2022
- [Supplemental Guidance](#) for PIN 22-05.1-ASC Notifies Adult and Senior Care Facility Workers of COVID-19 Vaccination and Booster Requirements
- [Spring 2022 Quarterly Updates](#) Adult and Senior Care Program Update

For other questions, email [COVID-LTC@sdcounty.ca.gov](mailto:COVID-LTC@sdcounty.ca.gov) or for more information for long-term care facilities, visit [www.coronavirus-sd.com/LTC](http://www.coronavirus-sd.com/LTC). Thank you for your continued efforts and partnership with the County of San Diego!

---



## California Department of Public Health

### [AFL 20-34.6](#) to Adult Day Health Care Centers (ADHCs), March 16, 2022

This AFL notifies ADHCs of a temporary waiver of specified regulatory requirements due to the state of emergency related to the Coronavirus Disease 2019 (COVID-19) outbreak. In accordance with Executive Order [N-04-22](#) (PDF), issued February 25, 2022, this AFL extends the temporary waiver of specified regulatory requirements until June 30, 2022.

### [AFL 20-35.7](#) to All Facilities, March 16, 2022

This AFL notifies all facilities of a temporary waiver of specified statutory and regulatory requirements for CNAs due to the state of emergency related to the COVID-19 outbreak. This AFL revision informs all facilities and applicants that the temporary waiver of specified regulatory requirements for initial certification, renewal, and expired certification have been extended until June 30, 2022, in accordance with Executive Order [N-04-22](#) (PDF), issued February 25, 2022. This AFL informs applicants and certificate holders how to obtain/maintain an active/employable status after the expiration of the listed waivers.

### [AFL 20-40.4](#) to All Facilities and Nurse Assistant Training Programs , March 16, 2022

This AFL notifies all facilities of a temporary waiver of specified statutory and regulatory requirements for NATPs and nursing facilities due to the state of emergency related to the COVID-19 outbreak. In accordance with Executive Order [N-04-22](#) (PDF), issued February 25, 2022, this AFL extends the temporary waiver of specified regulatory requirements contained in this AFL until June 30, 2022.

### [AFL 20-49.5](#) to All Facilities, March 16, 2022

This AFL notifies all facilities of a temporary waiver of specified statutory and regulatory requirements for HHAs due to the state of emergency related to the COVID-19 outbreak. In accordance with Executive Order [N-04-22](#) (PDF), issued February 25, 2022, this AFL notifies all facilities that the temporary waiver of specified statutory and regulatory requirements is extended until June 30, 2022.

### [AFL 20-57.4](#) to All Facilities, March 16, 2022

This AFL notifies all HHA Training Programs of a temporary waiver of specified statutory and regulatory requirements for HHA Training Programs due to the state of emergency related to the COVID-19 outbreak. In accordance with Executive Order [N-04-22](#) (PDF) issued February 25, 2022, this AFL notifies all facilities that the temporary waiver of specified statutory and regulatory requirements is extended until June 30, 2022.

[AFL 21-36.2](#) to Skilled Nursing Facilities, March 16, 2022

This AFL notifies skilled nursing facilities (SNFs) of a temporary waiver of specified regulatory requirements due to the state of emergency related to the Coronavirus Disease 2019 (COVID-19) outbreak. In accordance with Executive Order [N-04-22](#) (PDF), issued February 25, 2022, this AFL extends the temporary waiver of specified space conversion requirements until June 30, 2022.

[AFL 21-08.8](#) to Skilled Nursing Facilities, March 7, 2022

The purpose of this AFL is to provide hospitals and SNF with updated guidance on exposure risk assessment and work restriction for asymptomatic HCP with SARS-CoV-2 exposures (quarantine) Work restrictions for HCP diagnosed with SARS-CoV-2 infection (isolation). This revision incorporates updated Centers for Disease Control and Prevention (CDC) guidance on [Interim Guidance for Managing Healthcare Personnel with SARS-CoV-2 Infection or Exposure to SARS-CoV-2](#) and [Strategies to Mitigate Healthcare Personnel Staffing Shortages](#). Pursuant to Welfare and Institutions Code section 14126.033 a SNF's receipt of the annual increase in the weighted average Medi-Cal reimbursement rate may be conditioned on the facility's good faith compliance with CDPH AFLs related to the COVID-19 Public Health Emergency, as a result the recommendations included in this AFL are requirements for SNFs. This AFL update supersedes and removes the temporarily adjusted return-to-work criteria in place from January 8, 2022 – February 1, 2022, which was not renewed. **Hospitals should and SNFs must now resume using the table, below, to guide work restrictions for HCP with SARS-CoV-2 infection and for asymptomatic HCP with exposures based upon HCP vaccination status and facility staffing level.**

[AFL 21-28.3](#) to Skilled Nursing Facilities, February 22, 2022

This AFL requires SARS-CoV-2 diagnostic screening testing for HCP in SNFs. The [Public Health Order](#) issued July 26, 2021 related to unvaccinated workers in high risk settings becomes effective August 9, 2021. This AFL requires SNFs to develop and implement processes for verifying the vaccination status of all HCP and for obtaining and tracking documentation of results of SARS-CoV-2 diagnostic screening testing from HCP who are unvaccinated or incompletely vaccinated and includes additional PPE requirements. These requirements are effective August 9<sup>th</sup> and should begin as soon as reasonably possible, with full compliance no later than August 23, 2021. This AFL revision notifies all facilities of the February 22, 2022 [Public Health Order](#) and requires HCP to be up to date with vaccinations and receive boosters by March 1, 2022, unless exempt. The revision also allows HCP who have completed their primary vaccination series and provide proof of subsequent COVID-19 infection may defer booster administration for up to 90 days from

the date of clinical diagnosis or first positive test, which in some situations, may extend the booster dose requirement beyond March 1st. This revision also requires at least twice weekly COVID-19 testing for all HCP for unvaccinated exempt HCP and booster-eligible HCP who have not yet received their booster in long-term care settings. Facilities must begin testing of all booster-eligible HCP who have not yet received their booster by December 27, 2021 and be in full compliance by January 7, 2022. The California Department of Public Health (CDPH) strongly recommends that all HCP in SNFs (including those that are fully vaccinated and boosted) undergo at least twice weekly screening testing.

[AFL 21-29.3](#) to Health Care Facilities, February 22, 2022

The [Public Health Order](#) issued July 26, 2021, becomes effective August 9, 2021. This AFL requires weekly SARS-CoV-2 diagnostic screening testing for healthcare personnel (HCP) that are unvaccinated or incompletely vaccinated working the above specified in health care facilities. Facilities must develop and implement processes for verifying the vaccination status of all HCP, and for obtaining and tracking documentation of results of weekly SARS-CoV-2 diagnostic screening testing from HCP who are unvaccinated or incompletely vaccinated as soon as reasonably possible with full compliance no later than August 23, 2021. This AFL revision notifies all facilities of the February 22, 2022 [Public Health Order](#) and requires HCP be up to date with vaccinations and receive boosters by March 1, 2022, unless exempt. The revision also allows HCP who have completed their primary vaccination series and provide proof of subsequent COVID-19 infection may defer booster administration for up to 90 days from the date of clinical diagnosis or first positive test, which in some situations, may extend the booster dose requirement beyond March 1st. This revision also updates the testing requirements to require at least weekly COVID-19 testing for unvaccinated exempt HCP and booster-eligible HCP who have not yet received their booster. Facilities must begin testing of all booster-eligible HCP who have not yet received their booster by December 27, 2021 and be in full compliance by January 7, 2022.

[AFL 21-30.3](#) to Various Types of Intermediate Care Facilities, February 22, 2022

The [Public Health Order](#) issued July 26, 2021 becomes effective August 9, 2021. This AFL requires twice-weekly SARS-CoV-2 diagnostic screening testing for HCP that are unvaccinated or incompletely vaccinated. Facilities must develop and implement processes for verifying the vaccination status of all HCP, and for obtaining and tracking documentation of results of weekly SARS-CoV-2 diagnostic screening testing from HCP who are not fully vaccinated when reasonably possible with full compliance no later than August 23, 2021. This AFL revision notifies all facilities of the February 22, 2022 [Public Health Order](#) and requires HCP to be up to date with vaccinations and receive boosters by

March 1, 2022, unless exempt. The revision also allows HCP who have completed their primary vaccination series and provide proof of subsequent COVID-19 infection may defer booster administration for up to 90 days from the date of clinical diagnosis or first positive test, which in some situations, may extend the booster dose requirement beyond March 1st. This revision also updates the testing requirements to require at least twice weekly COVID-19 testing for all unvaccinated exempt HCP and booster-eligible HCP who have not yet received their booster. Facilities must begin testing of all booster-eligible workers who have not yet received their booster by December 27, 2021 and be in full compliance by January 7, 2022.

[AFL 21-34.3](#) to All Facilities, February 22, 2022

This AFL notifies all facilities of the August 5, 2021 [Public Health Order](#) related to mandatory vaccination for healthcare workers in identified healthcare settings. This AFL requires all HCP who provide services or work in healthcare facilities[i] to have received either the first dose of a one-dose regimen or their second dose of a two-dose regimen no later than September 30, 2021, unless exempt. This AFL notifies all facilities of the September 28, 2021 [Public Health Order](#) that establishes COVID-19 vaccination requirements for settings in which direct care and services[ii] are provided, and were not included in the August 5, 2021 Public Health Order. Direct care workers must receive either the first dose of a one-dose regimen or their second dose of a two-dose regimen no later than November 30, 2021, unless exempt. This includes the following:

- All in-home direct services workers, including registered home care aides and certified home health aides, except for those workers who only provide services to a recipient with whom they live or who are a family member of the recipient for whom they provide services
  - All hospice workers who are providing services in the home or in a licensed facility
- Facilities and providers must document HCP COVID-19 vaccination or exemption status by the following dates to be in compliance with the public health orders:
  - Healthcare facilities: September 30, 2021
  - Home health agencies and hospice providers: November 30, 2021
- This AFL revision notifies all facilities of the February 22, 2022 [Public Health Order](#) and requires HCP to be up to date with vaccinations and receive boosters by March 1, 2022, unless exempt. The revision also allows HCP who have completed their primary vaccination series and provide proof of subsequent COVID-19 infection may defer booster administration for up to 90 days from the date of clinical diagnosis or first positive test, which in some situations, may extend the booster dose requirement beyond March 1st. This revision also updates the testing

requirements to require at least twice weekly COVID-19 testing for unvaccinated exempt HCP and booster-eligible HCP who have not yet received their booster in an acute care or long-term care setting and requires at least weekly COVID-19 testing such HCP other health care settings.

[AFL 22-09](#) to All Facilities, February 24, 2022

The California Department of Public Health recommends facilities offer COVID-19 vaccinations and booster doses to clinically eligible individuals

[AFL 22-07](#) to Skilled Nursing Facilities, February 7, 2022

This AFL notifies SNFs of updated CDPH, Centers for Medicare and Medicaid Services (CMS), and Centers for Disease Control and Prevention (CDC) guidance for improving their infection control and prevention practices to prevent the transmission of COVID-19, including guidance for visitation. This AFL provides CDPH guidance for group activities and communal dining based upon vaccination status of residents. This AFL requires SNFs to develop and implement processes for verifying the vaccination status of all visitors, and for obtaining and tracking documentation of SARS-CoV-2 diagnostic test of all visitors. This AFL updates restrictions on visitation and also removes outdated exemptions to visitation restrictions.

[AFL 22-08](#) to Skilled Nursing Facilities, February 7, 2022

This AFL announces updates to [WIC section 14126.022](#) regarding penalties and appeal rights for skilled nursing facilities (SNFs) that are non-compliant with the direct care service hours per patient day (DHPPD) requirement. This AFL provides SNFs with the procedures for appealing penalties assessed as a result of staffing audits for non-compliance with DHPPD requirements for nurses and certified nurse assistants.

[AFL 20-34.5](#) to Adult Day Health Care Centers, February 8, 2022

This AFL notifies ADHCs of a temporary waiver of specified regulatory requirements due to the state of emergency related to the Coronavirus Disease 2019 (COVID-19) outbreak. This revision extends the temporary waiver of specified regulatory requirements in this AFL until March 31, 2022.

[AFL 22-02](#) to Skilled Nursing Facilities, January 14, 2022

Notifies SNFs that the state is sending roughly 330,000 Clinical Laboratory Improvement Amendments (CLIA) waived BinaxNow antigen tests to SNFs for the purposes of testing visitors seeking indoor visitation.

View other AFLs at the [All Facilities Letter](#) webpage.





## California Department of Social Services

**NEW!** [PIN 22-05.1-ASC](#) to All Adult and Senior Care Program Licensees, March 18, 2022  
Supersedes [PIN 22-05-ASC](#) Adult and Senior Care Facility Worker Coronavirus Disease 2019 (Covid-19) Vaccination and Booster requirements. Workers who provide proof of COVID-19 infection after completion of their primary series may defer booster administration for up to 90 days from date of first positive test or clinical diagnosis. Workers with a deferral due to a proven COVID-19 infection must be in compliance no later than 15 days after the expiration of their deferral.

**NEW!** [Supplemental Guidance](#) for PIN 22-05.1-ASC to Adult and Senior Care Facility Workers

Workers who have recovered from a diagnosis of COVID-19 in the last 90 days, and remained asymptomatic, do not need to submit to testing until after 90 days has expired but must self-monitor for symptoms and continue to follow all other infection control requirements, including masking, as stated in the July 26 Order (see Adult Care Facilities and Direct Care Worker Vaccine Requirement Q&A). Workers must provide documentation of previous diagnosis from a healthcare provider or confirmed laboratory results to refrain from testing. Workers must immediately follow self-isolation guidelines and be evaluated, (including testing) if new COVID-19 symptoms occur during the 90 days post-infection.

**NEW!** [Quarterly Update Spring 2022](#) To Adult and Senior Care Programs, March 28, 2022

[PIN 20-11-ASC](#) to All Adult and Senior Care Program Licensees, March 15, 2022  
Announcing organizational changes in the Adult and Senior Care Program. Certain facilities licensed by CCLD in the northern part of San Diego County will now fall under the jurisdiction of the Riverside Regional Office

[PIN 22-08-ASC](#) to All Adult and Senior Care Program Licensees, February 11, 2022  
Here are the [PowerPoint Slides](#) for informational call with Adult and Senior Care (ASC) licensees and their staff held on February 16, 2022 to review new and current COVID-19 guidance and updates.

[PIN 22-09-ASC](#) to Adult and Senior Care Program Licensees, February 14, 2022  
Updates quarantine and isolation guidance for Adult and Senior Care (ASC) facility staff

based on staff vaccination status and facility staffing levels.

[PIN 22-07-ASC](#) to All Adult and Senior Care Program Residential licensees, February 7, 2022

PIN 22-07-ASC supersedes PIN 22-04-ASC, dated January 18, 2022 and PIN 21-40-ASC, dated August 27, 2021, related to the Visitation Waiver. PIN 22-07-ASC informs Adult and Senior Care (ASC) residential licensees the State Public Health Officer Order of December 31, 2021 is being amended at this time to reflect indoor visitation requirements that were in place, prior to December 31, 2021, with the elimination of the six feet distancing requirement, in all covered settings. This amended Order is effective February 8, 2022

[New PINs Organized by Topic](#) - Community Care Licensing Division: Adult and Senior Care (ASC) COVID-19

[PIN 22-06-ASC](#) to All Adult and Senior Care Program Licensees, February 3, 2022

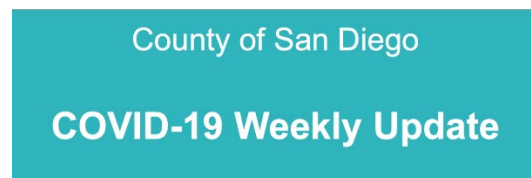
PIN 22-06-ASC supersedes PIN 21-51-ASC, dated December 15, 2021, and informs Adult and Senior Care (ASC) licensees about the availability of both the third (additional) dose and booster dose of COVID-19 vaccines. Specifically, this PIN provides updates in the following areas:

- New preferential recommendation for mRNA vaccinations (Pfizer-BioNTech or Moderna) for both primary series and boosters.
- New boosters for individuals aged 12 and older.
- New booster eligibility five (5) months after completing primary series.
- Boosters for people vaccinated outside of the United States.

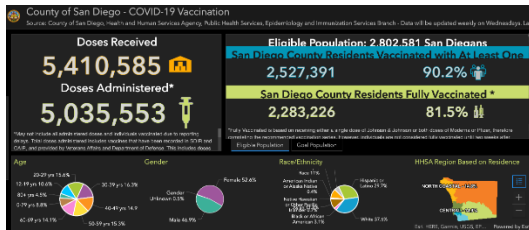
[See the full list of recent PINs](#)

## COVID-19 UPDATES & RESOURCES

### COVID-19 in San Diego County

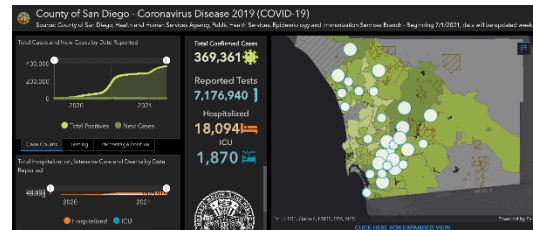


[COVID-19 Watch: Weekly COVID-19  
Surveillance Report \(3/23/22\)](#)



[County of San Diego - COVID-19  
Vaccination Dashboard](#)

[COVID-19 Weekly  
Update Presentation \(3/23/22\)](#)



[County of San Diego - COVID-19  
Dashboard](#)



## Federal Retail Pharmacy Program (FRPP) Update on COVID-19 Vaccines

The CDC allocates COVID-19 vaccines directly to enrolled retail and LTC pharmacies. Three LTC-specific groups (MHA, Innovatix-PharMerica, and GeriMed) receive federal doses and allocate them to member pharmacies who can then provide vaccines to LTC facilities. Not every LTC pharmacy in California is enrolled in the the Federal Retail Pharmacy Program (FRPP). To request vaccines from your contracted LTC pharmacy:

1. Enroll in the San Diego Immunization Registry: <http://www.sdiz.org/cair-sdir/enrollment.html>
2. Contact your pharmacy to determine if they are enrolled in the FRPP.
  - If the LTC pharmacy is enrolled in the FRPP, the pharmacy can subcontract with facilities to also administer the vaccine, and the facility does NOT need to enroll as a vaccine provider.
  - If the LTC pharmacy is **NOT** enrolled in the FRPP, facilities can register to be a vaccinator through <https://mycavax.cdph.ca.gov/s/>.
3. If your contracted pharmacy cannot assist, you may request assistance from other San Diego LTC pharmacies enrolled in the FRPP:
  - Guardian Pharmacy Services (MHA): [cvrs@guardianpharmacy.net](mailto:cvrs@guardianpharmacy.net)
  - Omnicare of San Diego: [Chadd.Eno@omnicare.com](mailto:Chadd.Eno@omnicare.com)
  - Pharmerica (Innovatix): [ImmunizeLTC@pharmerica.com](mailto:ImmunizeLTC@pharmerica.com)

- SNP Pharmacy LLC (MHA): [vaccines@snp-rx.com](mailto:vaccines@snp-rx.com)

**UPDATED:** Please view contact information for [additional retail pharmacies](#) that offer on-site clinics:

If you have residents that are immobile or unable to leave the facility (such as those with dementia or behavioral health challenges) and the resources above are not able to accommodate your facility for an on-site vaccination clinic, please email [COVID-HealthCareStatus@sdcounty.ca.gov](mailto:COVID-HealthCareStatus@sdcounty.ca.gov). **Due to a high number of requests, it may take our County team a few weeks to complete incoming vaccination clinic requests.**



### **Changes to California Masking Requirements**

As of March 1, masks are no longer required for unvaccinated individuals in California, but will be strongly recommended for all individuals in most indoor settings. After March 11, in schools and child care facilities, masks will not be required but will be strongly recommended. Masks are required in all long term care facilities. More information is available in the updated CDPH [guidance for face coverings](#).



### **Updated Fact Sheet and Toolkit: Masking & COVID-19**

Visit CDPH's updated [Masking & COVID-19 toolkit](#) to download the updated [When Should You Wear a Mask Fact Sheet](#) and updated social media messages.



### **COVID-19 Boosters Highly Encouraged**

With masks coming off indoors in many public places, County health officials are urging eligible San Diegans to get all the recommended COVID-19 vaccine doses, including the additional dose and booster shot. Visit the [County News Center](#) for more information.

## Planning to Visit a Hospital?

Here's what you need to know...



## Visiting Healthcare Settings

Planning a visit to a hospital or nursing home? Visit the [revised toolkit](#) to help inform Californians about current rules for visiting hospitals and nursing homes.



## Post-COVID Conditions Toolkit

Some individuals experience returning illness, recurring health problems, or a range of new symptoms four or more weeks after having COVID-19. This is referred to as post-COVID conditions, long COVID or other names. CDPH has published [new information](#), a [Q&A](#) and a [social media toolkit](#) about post-COVID conditions.



## The SMARTER Plan

[The SMARTER Plan](#) is the next phase of California's COVID-19 response. COVID-19 will remain with us for the foreseeable future. The SMARTER Plan focuses on how California will manage that reality and is not just for COVID-19. It will be used for strategies and systems in future emergencies.

U.S. COVID-19 Community Levels by County Map



## COVID-19 Community Levels

In addition to [CDPH Face Covering Guidance](#), [COVID-19 Community Levels](#) can help communities and individuals make decisions based on their local context and their unique needs. The San Diego County Health Officer Orders still remain in effect.



### Got COVID? Get Treatment to Recover Faster

The County Health and Human Services Agency is reminding San Diegans that monoclonal antibody treatment is available for people at high risk of serious illness from COVID-19. The treatment is available at no cost, regardless of health insurance or immigration status, and a doctor's referral is not required. Please visit the [County News Center](#) to learn more about the monoclonal antibody regional centers, or [MARGs](#).

---

### COVID-19 Vaccination & Testing



- [COVID-19 Vaccine Eligibility](#)
- [COVID-19 Vaccination in San Diego County](#)
- [COVID-19 Vaccine Boosters](#)
- [Testing in San Diego County](#)
- [COVID-19 Testing Options](#)

## COMMUNITY RESOURCES



### March is Women's History Month

Join the [Library of Congress](#) in commemorating and encouraging the study, observance and celebration of the vital role of women in American history. Explore the new [online research guide](#) highlighting hundreds of sources that tell the stories of women through a wide variety of perspectives and media.



### Tai Chi Classes

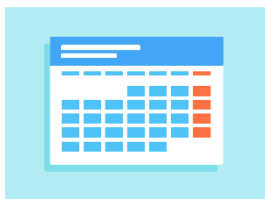
The County of San Diego Health and Human Services Agency, Aging & Independence Services has several new and upcoming tai chi classes! Classes are free and anyone may join. If you have questions or would like more information about any of

these classes, please see the [flyers](#) or email [HealthierLiving.HHSA@sdcountry.ca.gov](mailto:HealthierLiving.HHSA@sdcountry.ca.gov).



### Urgent Need for Blood

There is a critical need for all blood types, and local patients rely on caring blood donors like you to stay healthy and thrive! Make an appointment today at [sandiegobloodbank.org/donate](http://sandiegobloodbank.org/donate) or call (619) 400-8251.



### Community Testing, Vaccination, & Outreach Events

Visit the [Community Testing, Vaccination, and Outreach Events Calendar](#) for upcoming events in San Diego County. You can also submit events to be added to this calendar online.