



CORONAVIRUS
DISEASE 2019

(COVID-19)

WEEKLY UPDATE

LONG-TERM CARE AND RESIDENTIAL CARE FACILITIES

Friday, March 5, 2021

Greetings Long-Term Care and Residential Care Facilities of San Diego County,

Vaccination efforts are an on-going priority for long-term care facilities, and we have now also begun vaccinating [Phase 1B](#). The CDC and CDPH are expected to release updated guidance in the near future regarding steps to follow after residents are fully vaccinated. Until then, please continue following the current CDPH and CDSS guidance. CDSS is also in the process of updating guidance for Adult Day Programs.

Please find information below regarding the latest guidance and resources from county, state, and federal organizations, including **new updates**:

- **CAHAN San Diego Health Advisory Updates:**

- Health Advisory Update #27 (March 2, 2021): **COVID-19 Variants**
- Health Advisory Update #26 (March 1, 2021): **COVID-19 Vaccine and Monoclonal Antibody Update**

- **California Department of Public Health All Facilities Letters (AFLs):**

- [AFL 20-32.2](#) notifies Skilled Nursing Facilities of the suspension of regulatory enforcement of specified Skilled Nursing Facility requirements
- [AFL 20-34.3](#) notifies Adult Day Health Centers of the suspension of regulatory enforcement of specificized Adult Day Health Centers requirements
- [AFL 20-69.1](#) notifies all facilities of survey priorities during the COVID-19 pandemic and announces the discontinuing of Mitigation Surveys and the

resumption of relicensing and recertification surveys in Skilled Nursing Facilities
April 1, 2021

- **California Department of Social Services, Community Care Licensing Division
Provider Information Notices (PINs):**

- [PIN 21-14-ASC](#) to all Adult and Senior Care Program Residential Licensees regarding vaccination of residents and facility staff for COVID-19. Specific sections of this PIN include: Increasing Vaccine Confidence, CDC Pharmacy Partnership for Long-Term Care Program, Consent Requirements and Procedures, Personal Rights and COVID-19 Vaccines, Facility Staff Acceptance and Refusal, TB and COVID-19 Vaccines, Post Vaccine Considerations for Residents and Facility Staff, and additional resources.
- [PIN 21-03-CCLD](#) to all CCLD Providers and Licensees provides information regarding a statewide waiver for tuberculosis testing specific to the timing of COVID-19 vaccinations for licensees, providers, and staff
- CCLD is currently working on an updated PIN for Adult Day Programs

- **COVID-19 Information Phone Numbers:**

- **Public COVID-19 Call Center:** 1-833-422-4255, Monday-Friday 8:00 AM – 8:00 PM; Saturday and Sunday 9:00 AM – 5:00 PM, for general questions about COVID-19, including vaccines, scheduling vaccination appointments through My Turn, return to school, testing, and more.
- [My Turn](#) Call Center: 1-833-422-4255 for Californians to sign up for a notification when it's their turn to get a vaccine.
- **CCLD Helpline:** A CCLD clinician will be available Monday – Friday (excluding holidays) during business hours of 8:00 AM – 5:00 PM to answer questions related to infection prevention and control. Additionally, a voicemail system is available for leaving a message after business hours, on weekends, and on holidays. **During business hours:** 1-844-538-8766 (Press #7 when prompted); **After business hours, on weekends, and on holidays:** 1-833-498-2027

- **Telebriefing:** Our next Long-Term Care and Residential Care Facilities telebriefing will be **Thursday, March 11**, 2021, 2:00-3:00 PM, with a **special guest** representative from the California Department of Social Services, Community Care Licensing Division, San Diego Regional Office.

- **Feedback survey** closing on Monday, March 8, 2021; we appreciate your suggestions on ways to improve our COVID-19 Long-Term Care and Residential Care Sector outreach, education, and communication efforts. The survey for your input can be found [here](#).

As a reminder, if you have a positive COVID-19 case at your facility, please report it by calling the County of San Diego Public Health Epidemiology Unit at (619) 692-8499 or (858) 565-5255 for after-hours or on the weekend. The County as well as your State licensing departments are here to support you.

For additional information, please see our website www.coronavirus-sd.com/LTC. Please email us at moc.logs.hhsa@sdcounty.ca.gov if you need personal protective equipment.

Thank you for your continued efforts and partnership with the County of San Diego.



Announcements and News



California Health Alert Network San Diego

Health Advisory Updates

New: Health Advisory Update #27: Coronavirus Disease 2019 (COVID-19) Variants
(March 2, 2021)

Key Messages:

- National, state, and local public health departments have been closely monitoring the evolving genome of the SARS-CoV-2 virus to determine the clinical and epidemiological impacts of variants of concern.
- Whole genome sequencing (WGS) of SARS-CoV-2 is necessary to better define the prevalence and clinical significance of variants of concern. Indications for specimen referral for WGS are provided in this advisory.

To learn more about the situation and actions requested, **please see attached PDF** titled "CAHAN_SD_03-02-2021"

New: Health Advisory Update #26: COVID-19 Vaccine and Monoclonal Antibody Update (March 1, 2021)

Key Messages:

- COVID-19 vaccine dose allocation may not reflect the amount requested by provider, as vaccine supply continues to be limited.

- The California Department of Public Health (CDPH) released [updated vaccine allocation guidance](#) with additional clarification on eligibility for Phase 1A and defined eligibility for Phase 1B.
- Beginning February 27, 2021, all individuals in Phase 1B are eligible for vaccines, including workers in Education and Childcare, Emergency Services, and Food and Agriculture Sectors.
- Providers should monitor the Centers for Disease Control and Prevention [Clinical Considerations](#) webpage for frequently updated guidance on COVID-19 vaccination.
- As per the [Food and Drug Administration](#), undiluted frozen vials of the Pfizer vaccine can be safely transported and stored in conventional pharmaceutical freezers -25°C to -15°C for up to two weeks.
- CDPH's vaccine provider enrollment sites has been changed to myCAVax on February 27, 2021.
- Monoclonal Antibody treatment is available at the [Monoclonal Antibody Regional Center \(MARC\)](#) for persons symptomatic with COVID-19 and at high risk for progression to severe disease.

To learn more about the situation, vaccination guidance, post vaccination symptoms versus potential COVID-19 infection, COVID-19 vaccine provider enrollment, Monoclonal Antibody Regional Center, and actions requested **please see attached PDF** titled "CAHAN_SD_03-01-2021"



California Department of Public Health

CDPH publishes news and All Facilities Letters (AFLs) regularly. If you would like to receive email notifications of AFLs, please submit your request to LNCPolicy@cdph.ca.gov.

NEW: Letter to Skilled Nursing Homes: [AFL 20-32.2](#) notifies Skilled Nursing Facilities of a temporary waiver of specified regulatory requirements due to the state of emergency related to the COVID-19 outbreak. This revision extends this waiver until June 1, 2021. This revision also rescinds all temporary COVID-19 staffing waivers. Effective March 1, 2021, SNFs must maintain required staffing levels at all times

NEW: Letter to Adult Day Health Care Centers: [AFL 20-34.3](#) – March 1, 2021

This AFL notifies ADHCs of a temporary waiver of specified regulatory requirements due to the state of emergency related to the COVID-19 outbreak. This revision extends the waiver until June 1, 2021. This revision also rescinds the temporary waiver of Health and Safety Code section 1575.7. Effective March 1, 2021, all administrators, program directors, and fiscal officers must obtain Live Scan services prior to license issuance.

NEW: Letter to All Facilities: [AFL 20-69.1](#) – March 1, 2021

This AFL supersedes AFL 20-69 and describes the surveys that CDPH will conduct during the COVID-19. This revision is being updated to announce the discontinuing of Mitigation Surveys and the resumption of relicensing and recertification surveys in Skilled Nursing Facilities April 1, 2021.

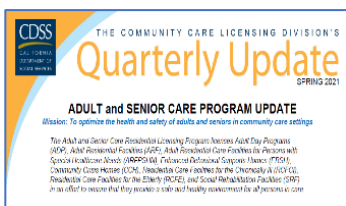
[Click here to see a full list of recent AFLs](#)



California Department of Social Services

The Community Care Licensing Division (CCLD) of the California Department of Social Services (CDSS) publishes Provider Information Notices (PINs) to communicate important license related information to CCLD-licensed providers. The local San Diego Adult and Senior Care Regional Office can be reached at (619) 767-2300 or

CCLASCPSanDiegoRO@dss.ca.gov.



CDSS **Spring 2021 Quarterly Updates** is available on their website [here](#).

NEW: [PIN 21-14-ASC](#) (March 4, 2021) to all Adult and Senior Care Programs Residential Licensees providing guidance to Adult and Senior Care residential licensees related to the COVID-19 vaccine. This twenty-page PIN includes sections such as Background, Increasing Vaccine Confidence, CDC Pharmacy Partnership for Long-Term Care Program, Consent Requirements and Procedures, Personal Rights and COVID-19 Vaccines, Facility Staff Acceptance and Refusal, TB and COVID-19 Vaccines, Post Vaccine Considerations for Residents and Facility Staff, and additional resources.

NEW: [PIN 21-03-CCLD](#) (February 26, 2021) to all CCLD Providers and Licensees provides information regarding a statewide waiver for tuberculosis (TB) testing specific to the timing of COVID-19 vaccinations for licensees, providers, and staff. This PIN provides follow up guidance to an ASC Program alert released via Everbridge on February 5, 2021.

[Click here to browse the full list of recent PINs](#)



Updated Public Health Orders

San Diego County Public Health Order (2/6/2021) Click [here](#).

Order of the Public Health Officer (2/12/2021):

- **Quarantine** guidance has been updated (page 2, number 2) Click [here](#).



Monoclonal Antibody Treatment is Available

Reminder:

- The [Monoclonal Antibody Regional Center](#) (MARC) is open to treat mild to moderate COVID-19 in adults and pediatric patients (12 years of age and older weighing at least 40 kg) with positive results of PCR or Rapid Antigen SARS-CoV-2 testing, and who are at high risk for progressing to severer COVID-19 and/or hospitalization. Treatment should be administered as soon as possible after positive results of SARS-CoV-2 testing, and within 10 days of symptom onset.
- The MARC is open 7 days a week from 8:00 AM to 8:00 PM at the Palomar Medical Center Downtown ([555 East Valley Parkway, Escondido, CA 92025](#)).
- Another MARC location in the South Region is being explored to provide services in the area.
- Treatment is available at **no-cost** to those who live or work in San Diego County, regardless of health insurance or immigration status.
- Patients 65 years of age or older do not require a referral and may call **(619) 685-2500** with questions and/or to schedule an appointment for COVID-19 monoclonal antibody treatment.
- Patients younger than 65 years old, talk to your doctor to see if you are medically eligible for this treatment and to receive a referral.

For questions, please email COVIDtreatment@sdcounty.ca.gov. For additional information, please visit www.sandiegocounty.gov/COVIDHealthProfessionals.

Please click on patient flyer links for more information:

[MARC Patient Flyer \(English\)](#), [MARC Patient Flyer \(Spanish\)](#)



California COVID-19 Vaccination Program Update

Federal Retail Pharmacy Program Activation

The Federal Retail Pharmacy Program has been activated and some pharmacy partners include **CVS, Rite Aid, Walgreens, and Albertsons**. Target population includes people 65+ and healthcare workers. Appointments will be required. Eligible Californians should not contact individual stores for appointments or come to the store seeking a vaccination without an appointment. Eligible individuals should be directed to the following scheduling links below for an appointment:

CVS: <https://www.cvs.com/immunizations/covid-19-vaccine>

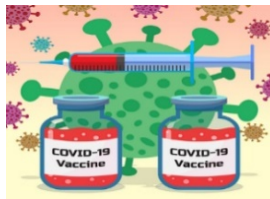
Rite Aid: <https://www.riteaid.com/pharmacy/covid-qualifier>

Walgreens: <https://www.walgreens.com/topic/promotion/covid-vaccine.jsp>

Albertsons: <https://www.albertsons.com/pharmacy/covid-19.html>

Additionally for CVS only, appointment can also be scheduled via CVS pharmacy app and eligible individuals without internet access can call **CVS at 800-746-7287** for assistance on scheduling.

For questions, please email: COVIDvaccinePharm@cdph.ca.gov



COVID-19 Vaccine Resources for Long-Term Care Facilities

Updated: **COVID-19 vaccine eligibility** for people who live and work in San Diego County AND are in [Phase 1A or Phase 1B](#) (includes persons age 65 and older). Please continue to share the County [COVID-19 Vaccine webpage for appointments](#) with your staff and ambulatory residents.

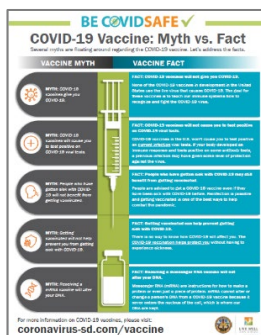
Tip: If you are a formal or informal caregiver, staff or resident of a behavioral health residential facility, or in any other classification listed in the Phase 1A category, please note that you will need to choose the **“health care worker”** category in order to make an appointment on My Turn. We suggest taking a **copy of the attached PDF** titled “Additional Phase 1A settings and healthcare workers determined by CDPH” or the County’s “Who Can Get Vaccinated NOW” eligible list on our website [here](#) if any questions arise at the vaccination site.

If you are aware of residents or staff members who have friends or family members who are 65 years of age or older and do not have access to a computer or someone to assist them, please encourage them to **dial 2-1-1** for help connecting with their health care provider or making a vaccination appointment at a County of San Diego site.

Transportation- If you are aware of staff, ambulatory residents, and/or their family members who may need transportation to a vaccination site, the Metropolitan Transit System (MTS) and North County Transit District (NCTD) are offering **free rides** for everyone in the region who needs a lift to their vaccine appointment. Ride any bus, trolley, SPRINTER or COASTER for FREE with proof of vaccine appointment. MTS has created a [transit trip planner](#) with vaccine sites to help residents get to their appointments. For more information, visit the [MTS webpage](#).

There are also appointment ride options for seniors who are age 65 and over. They have free transportation options through the MTS, Facilitating Access to Coordinated Transportation (FACT), and through Medi-Cal Transportation Services. Please click on flyer for more information: [COVID-19 Vaccinations: Appointment Ride Options for Seniors Flyer \(English\)](#)

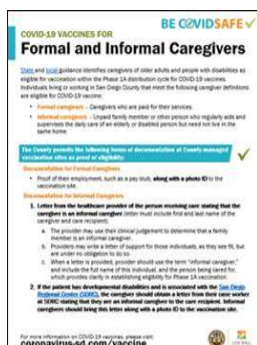
COVID-19 vaccine presentations are available through the *Live Well San Diego* [Speaker's Bureau](#) that provides free presentations delivered by volunteer medical professionals, including doctors and nurses, who are subject matter experts. Fill out an [online interest form](#) on our *Live Well San Diego* website to request a presentation.



COVID-19 Vaccine Myth vs. Fact handouts are available in English and Spanish.

Please click link below for the flyer:

[COVID-19 Vaccine – Myth vs. Fact \(English/Spanish\)](#)



Both **formal and informal caregivers** to elderly and people with disabilities are identified in the [additional Phase 1A priority groups](#) to receive the COVID-19 vaccine .

Formal Caregivers: Caregivers who are paid for their services.

Informal Caregivers: Unpaid family member or other person who regularly aids and supervises the daily care of an elderly or disabled person but need not live in the same home.

Please click links below for the flyers, including documentation needed:

[COVID-19 Vaccination for Formal and Informal Caregivers \(English\)](#)

[COVID-19 Vaccination for Formal and Informal Caregivers \(Spanish/Español\)](#)

Reminder: Please check out the County's webpage with COVID-19 educational materials in different languages. Please [click here](#) and scroll down the list of options in Spanish, Tagalog, Arabic, Aramaic, Chinese, Farsi, Japanese, Vietnamese, Korean, and more. The County COVID-19 [Information and Resources in Other Languages](#) webpage is a great resource.

Stay informed about COVID-19 vaccination information by bookmarking the [County COVID-19 vaccine webpage](#). Information regarding how the COVID-19 vaccine works, safety, and phases of vaccine administration, and more can be found on this webpage.

COVID-19 Vaccine Community Conversation Toolbox

The County of San Diego has created the [COVID-19 Vaccine Community Conversation Toolbox](#). This toolbox is primarily for healthcare workers (doctors and nurses who have been identified as trusted messengers of COVID-19 vaccine information) to have conversations about the COVID-19 vaccine. Fact sheets, links to important websites, handouts (English and Spanish), and Frequently Asked Questions are included.

CDC Vaccine Considerations

Please [click here](#) for some CDC vaccine considerations.

1. Both mRNA vaccines require a 2nd dose: Pfizer at 21 days and Moderna at 28 days
2. The second dose should NOT be administered any sooner than 21 days (Pfizer) or 28 days (Moderna)
3. The second dose of both mRNA vaccines may be administered up to 6 weeks after the first dose

Long-Term Care Facility Resources

Post Vaccine Considerations for Residents — While [this guidance](#) is intended for long-term care facilities, it could also be applied to patients in other healthcare settings. Considerations are based on the current understanding of signs and symptoms following COVID-19 vaccination, including timing and duration, and might change as experience with the vaccine accumulates.

Frequently Asked Questions about COVID-19 Vaccination in Long-Term Care Facilities (LTCF) — Making sure LTCF residents can receive COVID-19 vaccination as soon as vaccine is available will help save the lives of those who are most at risk of dying from COVID-19. CDC updates [frequently asked questions](#) for Healthcare Infection Prevention and Control and Healthcare Professionals regularly based on feedback from professionals on the ground.

The [Vaccination Toolkit for Long-term Care Facilities](#) is available on CDC's website.

Importance of COVID-19 Vaccination for Residents of Long-term Care Facilities —

This guidance has been updated to include long-term care consent information for COVID-19 vaccination. To learn more visit, [Vaccinating Long-Term Care Facility Residents](#).

CDC Pharmacy Partnership for Long-Term Care Program

As you know, the Centers for Disease Control and Prevention's Pharmacy Partnership for Long-Term Care Program partners with **CVS and Walgreens pharmacies** to provide on-site no-cost COVID-19 vaccinations.

For more information, please see the Pharmacy Partnership for Long-Term Care Program for COVID-19 Vaccination [FAQs](#). If a facility would like to email CVS or Walgreens directly, please see below:

- **CVS Email:** CovidVaccineClinicsLTCF@CVSHealth.com
- **Walgreens Email:** immunizeltc@walgreens.com



COVID-19 Long-Term Care and Residential Care Facilities Sector

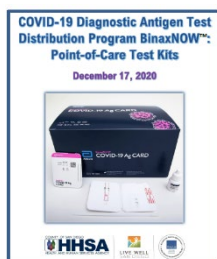
Feedback Welcome

Reminder- Survey Closing Monday, March 8th: We welcome your input to help us improve our outreach, education, and communication efforts. This quick feedback form should take no longer than 5 minutes to complete.

Please click on the link below and provide us with your valuable input:

Long-Term Care and Residential Care Facilities Sector Feedback Form ([click here](#))

Thank you to those who have responded. We read each comment thoroughly and take everything into consideration. We appreciate your time.



County of San Diego COVID-19 Diagnostic Antigen Test BinaxNOW Distribution Program

Access to the **Abbott BinaxNOW POC antigen tests** is being coordinated by the federal government and State through our local Medical Health Operational Area Coordinator local program within the County. Kits are available in San Diego County for approved health care partners. These point-of-care (POC) antigen diagnostic tests detect the presence of the SARS-CoV-2 virus and can provide results in less than 20 minutes. Antigen tests have been added to the COVID-19 testing arena to meet the growing demand.

If you are interested in receiving these test kits, note a few of the **following requirements** which are listed in the attachment in further detail:

- Obtain (and attach) a Clinical Laboratory Improvement Amendments (CLIA) waiver
- Read and acknowledge responsibilities in the attached BinaxNOW Distribution Program
- Allow for a minimum of 48 hours for process and 2-3 days for delivery

Please email moc.logs.hhsa@sdcounty.ca.gov for more information.



Upcoming Telebriefings



**Thursday,
March 11
at 2:00 PM**

Telebriefing for the **Long-Term Care and Residential Care Facilities Sector** with a **special guest** representative from the California Department of Social Services, Community Care Licensing Division, San Diego Regional Office

WHEN: Telebriefings will be held the 2nd and 4th Thursdays of the month from 2:00 – 3:00 PM.

[Zoom Meeting Link](#)

[Submit Telebriefing Questions](#)

Visit the **Long-Term Care and Residential Care Facilities** sector [webpage](#)



**Friday,
March 19
at 3:00 PM**

Telebriefing for the **Older Adult and Disability Sector**

WHEN: Telebriefings will be held on the 3rd Friday of the month from 3:00 – 4:00 PM.

[Zoom Meeting Link](#)

[Submit Telebriefing Questions](#)

Visit the **Older Adult and Disability Sector** sector [webpage](#).



Ongoing Programs, Services, and Resources



County of San Diego Coronavirus Disease 2019

For up-to-date local information on COVID-19 within the County of San Diego, visit

www.coronavirus-sd.com



COVID-19 Testing Information & Resources

For testing locations or to make an appointment at a drive-up location, visit the

[Testing in San Diego County webpage.](#)



CDC Infection Control Resources

CDC Guidance and Resources for Infection Control in Facilities

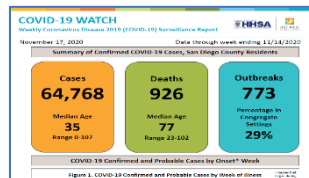
[CLICK HERE](#)



Case Rates by Zip Code

To view an interactive COVID-19 case rates by ZIP code map,

[CLICK HERE](#)



COVID-19 Watch Surveillance Report

County of San Diego COVID-19 Dashboard and Weekly Report

[CLICK HERE](#)



Triggers Dashboard: Testing Positivity Rate

The frequency of routine testing of skilled nursing facility staff depends on the San Diego County Positivity Rate.

[View the current Positivity Rate here](#) (Item #10: Testing Positivity)



2-1-1 San Diego

For general health questions about COVID-19, community resources, or if you are uninsured, dial 2-1-1

[2-1-1 San Diego](#)



Live Well @ Home

Interested in free resources, tips, and strategies to stay healthy in both mind and body while staying at home?

[CLICK HERE](#)



Questions?

For questions related to long-term care and residential care facilities, please email:

COVID-LTC@sdcounty.ca.gov



Stay Connected



For questions related to long-term care and residential care facilities, please email: COVID-LTC@sdcounty.ca.gov.

Visit the Long-Term Care and Residential Care Facilities sector support [webpage](#)



Text **COSD COVID-19** to **468-311** to get text alert updates from the County of San Diego.





To: CAHAN San Diego Participants
Date: March 1, 2021
From: Public Health Services

Health Advisory Update #26: Coronavirus Disease 2019 (COVID-19) Vaccine and Monoclonal Antibody Update

Key Messages

- COVID vaccine dose allocation may not reflect the amount requested by provider, as vaccine supply continues to be limited.
- The California Department of Public Health (CDPH) released [updated vaccine allocation guidance](#) with additional clarifications on eligibility for Phase 1A and defined eligibility for Phase 1B.
- Beginning February 27, all individuals in Phase 1B are eligible for vaccines, including workers in Education and Childcare, Emergency Services, and Food and Agriculture Sectors.
- Providers should monitor the Centers for Disease Control and Prevention (CDC) [Clinical Considerations](#) webpage for frequently updated guidance on COVID-19 vaccination.
- As per the [Food and Drug Administration](#), undiluted frozen vials of the Pfizer vaccine can be safely transported and stored at in conventional pharmaceutical freezers -25°C to -15°C for up to two weeks.
- CDPH's vaccine provider enrollment site has been changed to [myCAvax](#) on February 27.
- Monoclonal antibody treatment is available at the [Monoclonal Antibody Regional Center \(MARC\)](#) for persons symptomatic with COVID-19 and at high risk for progression to severe disease.

Situation

- **Vaccine Priorities Updates**
 - Vaccine supply continues to be limited and approved dose allocation may not reflect the amount requested by provider. All requests are reviewed, and vaccine is distributed with a focus on health equity and in line with recommendations set forth by the Public Health Officer, in consultation with the [County COVID-19 Vaccine Clinical Advisory Group](#). The County of San Diego (County) thanks all providers for their continued support in immunizing San Diegans with COVID-19 vaccines. The County intends to fulfill requests for vaccines as soon as supply is available from the State.
 - California Department of Public Health (CDPH) has [clarified vaccine allocation guidance](#) to include the following workers in Phase 1A:
 - Workers in the Health Care and Public Health Sector who may come into direct contact with the COVID-19 virus through research, development, manufacture, or testing.
 - Workers who are manufacturing vaccine, therapeutics, devices, supplies or personal protective equipment supporting the COVID-19 response.
 - Family member caregivers of regional center consumers are eligible as healthcare providers for Phase 1A. Other family members within the same household not providing direct care do not qualify for Phase 1A [See [CAHAN #25](#) for additional details on caregivers and handouts here in [English and Spanish](#)].

- The following have been clarified as **not** included in Phase 1A:
 - Workers that manage health plans, billing, and health information (as opposed to administrative workers in clinical or other settings).
 - Workers supporting operations of outdoor recreational facilities that facilitate physically distanced personal health and wellness through outdoor exercise.
 - All state and local clarifications for Phase 1A can be found [here](#).
 - **Phase 1B fully opened on February 27** to also include essential workers at risk of exposure at work in the following sectors:
 - Workers at risk in any role in the [Emergency Services Sector](#) (e.g., law enforcement, fire and rescue services, emergency managers, security staff, animal control officers, workers in judicial or administrative facilities involved in the administration of justice).
 - Appointments exclusive to uniformed law enforcement officers will be organized by Scripps Health.
 - Persons at risk of exposure through their work in [childcare and education](#) settings include:
 - Staff members in Pre-kindergarten, elementary, middle, and high schools. This includes public, parochial, charter, and private schools.
 - The San Diego County Office of Education and the California Schools Voluntary Employees Benefits Association (VEBA) will exclusively schedule appointments for transitional kindergarten (TK) through 12th grade teachers and staff **only** through [vebavaccinates.com](#).
 - Prioritization is by schools open and planning to open, then those closed, starting with those in the fourth quartile of the [California Healthy Places Index \(HPI\)](#).
 - Childcare and institutions of higher education staff should go the County vaccination sites or superstations.
 - Formal and informal childcare workers, including day care providers.
 - Staff in colleges, universities, junior colleges, community colleges, and other postsecondary education facilities.
 - Staff in educational support services and administration.
 - Staff in technical and trade schools.
 - Any other workers involved in child and/or student care, including school bus drivers and monitors, crosswalk guards, etc.
 - Workers at risk in any role in the Food and Agriculture Sector (e.g., workers supporting groceries, pharmacies, convenience stores, restaurant carry-out and quick serve food operations, and other retail that sells food or beverage products, and food and beverage manufacturer employees).
 - For farm workers in fields and rural locations, CAL FIRE and Operation Collaboration will lead efforts to schedule remote vaccination events.
 - Those not covered by specific vaccination plans for their occupation should contact their primary care doctor or schedule an appointment at [vaccinationsuperstationsd.com](#).
 - The County has developed materials to clarify acceptable documentation needed for those in [Emergency Services](#), [Childcare and Education](#), and [Food](#) and [Agriculture](#).
 - CDPH [clarified vaccine allocation guidance](#) to **include** veterinary services employees in Phase 1B as part of food and agriculture.
 - [CDPH announced](#) that beginning **March 15**, providers may use their clinical judgement to vaccinate individuals age 16-64 who are deemed to be at the very highest risk for morbidity and mortality from COVID-19 as a direct result of one or more of the severe health conditions included in this [provider bulletin](#).
- **Vaccination Guidance**
 - Centers for Disease Control and Prevention (CDC) posted additional [Clinical Considerations for Use of mRNA COVID-19 Vaccines Currently Authorized in the United States](#).
 - The Food and Drug Administration updated the [EUA Fact Sheet for Healthcare Providers](#) regarding storage of the Pfizer Vaccine. Undiluted frozen vials of the vaccine can be transported and stored at in conventional

pharmaceutical freezers -25°C to -15°C (-13°F to 5°F) for a period of up to two weeks as an alternative to the preferred storage in ultra-low temperature freezers between -80°C to -60°C (-112°F to -76°F).

- Asymptomatic, fully vaccinated (i.e., ≥2 weeks following receipt of the second dose in a 2-dose series, or ≥2 weeks following receipt of one dose of a single-dose vaccine) persons within 3 months following receipt of the last dose in the series will no longer require quarantine after an exposure to someone with COVID-19 **except** for patients or residents in inpatient or healthcare settings.
- Note that vaccinated inpatients and residents in healthcare settings should **continue** to quarantine following an exposure to someone with suspected or confirmed COVID-19.
- The local [Quarantine Order](#) has been updated to reflect this vaccine-related guidance, as well as the recent [CDC recommendation](#) **not** to quarantine those who have recovered from laboratory-confirmed SARS-CoV-2 infection if it is within the first 90 days of symptom onset or within the first 90 days of their first positive SARS-CoV-2 test result if they were asymptomatic during initial infection and have remained asymptomatic since the new exposure.
- Updates to CDC guidance on contraindications and precautions to mRNA COVID-19 vaccination:
 - Medically diagnosed allergy to polyethylene glycol (PEG), polysorbate, or another mRNA vaccine component, is a [contraindication to COVID-19 vaccination](#).
 - Immediate allergic reactions to a vaccine or injectable therapy that contain multiple components including PEG, polysorbate, or another component of mRNA COVID-19 vaccines, but it is not known which component elicited the reaction, is a precaution.
 - Immediate allergic reaction to any other vaccine or injectable therapy not related to a component of mRNA COVID-19 vaccines or polysorbate is a precaution.
 - Delayed, local injection-site reactions after the first mRNA vaccine dose are neither a contraindication nor a precaution to receiving the second dose of mRNA COVID-19 vaccines.
- Additional information and updated recommendations for preventing, reporting, and managing mRNA COVID-19 vaccine administration errors and for timing of testing for tuberculosis infection are also provided in the [CDC update](#).

- ***Post Vaccination Symptoms versus Potential COVID-19 Infection***

- As with other vaccines, COVID-19 vaccines can cause local reactions, hypersensitivity reactions, and systemic signs and symptoms (fever, fatigue, headache, chills, myalgia, and arthralgia).
 - Most systemic post-vaccination signs and symptoms are mild to moderate in severity, occur within the first three days of vaccination—most the day after vaccination, and resolve within 1-2 days of onset.
 - Symptoms are greater following the second dose, especially among younger persons compared to those >55 years of age. This means that the immune system is responding to the vaccine.
 - For details on reactogenicity, see [Pfizer](#) and [Moderna](#) COVID-19 vaccine trial data.
- Local reactions should not require workup for COVID-19.
- Symptoms **not** associated with vaccination response include cough, shortness of breath, rhinorrhea, sore throat, or loss of taste or smell. These symptoms are indicative of COVID-19 or other infections.
- To aid in distinguishing systemic post-vaccination signs and symptoms among healthcare workers from those due to COVID-19 or other infections, CDC has posted [Post Vaccine Considerations for Healthcare Personnel](#).
- For non-healthcare workers, CDC does not have post-vaccination guidance for those experiencing systemic signs and symptoms that overlap with COVID-19 infection. Providers are encouraged to use clinical judgment and consider these suggestions if the person has developed symptoms within 3 days of COVID-19 vaccination (day of vaccination is day 1) and not had an exposure to a person with suspected or confirmed COVID-19 in the preceding 14 days:
 - Vaccine recipients should self-isolate while they are experiencing these symptoms, plus 24 hours.
 - If the symptoms started 1-2 days after the first or second vaccine dose, **and** symptoms resolved within 72 hours of that dose **and** there are no other symptoms or signs of COVID-19 disease (e.g., loss of taste/smell; sore throat, cough, others), then this individual may end isolation 24 hours after the systemic side effects have abated.

- If the symptoms did not start 1-2 days after the vaccine was administered **or** all symptoms did not resolve within 72 hours after starting, then do **not** attribute these symptoms to vaccine side effects. Continue isolation and evaluate the symptoms as if the individual may have COVID-19.

- **COVID-19 Vaccine Provider Enrollment**

- CDPH's COVID-19 vaccine provider enrollment site has been upgraded to [myCAvax](#) beginning February 27th.
- CalVax and COVIDreadi will no longer be in use.
- Instructions for enrollment to provide COVID-19 vaccination is available [here](#) and FAQs about this name change are [here](#).

- **Monoclonal Antibody Regional Center**

- Monoclonal antibodies have been shown in clinical trials to reduce COVID-19-related hospitalization and emergency room visits. Bamlanivimab, a monoclonal antibody therapy from Eli Lilly, has been authorized for emergency use by FDA to treat mild to moderate COVID-19 in adults and pediatric patients (12 years of age and older weighing at least 40 kg) with positive results of direct SARS-CoV-2 viral testing, and who are at high risk for progressing to severe COVID-19 and/or hospitalization.
- [Medically eligible](#), symptomatic COVID-19 positive patients whose COVID-19 symptoms have developed within the last 10 days can receive monoclonal antibody treatment at the [Monoclonal Antibody Regional Center \(MARC\)](#).
- Treatment will be provided at no cost to the patient, regardless of health insurance or immigration status. The MARC is available to those who live or work in San Diego County. The MARC is open 7 days a week from 8:00am to 8:00pm and is located at the Palomar Medical Center Downtown at 555 East Valley Parkway, Escondido, CA 92025. Appointments are required.
- To refer patients, complete the [referral form](#) (using Chrome, Firefox, or Safari) and either call (619) 685-2500 or fax the completed form to (760) 739-2851 to schedule a patient's appointment.
- Persons 65 years and older may call (619) 685-2500 with questions or to schedule an appointment directly.
- Please provide your patient with an [FDA mAb EUA Fact Sheet for Patients, Parents and Caregivers](#) ([Spanish](#)) as well as a completed copy of the referral form (if available) to bring to his or her appointment.
- Additional patient and provider resources are available on the [MARC webpage](#), or email COVIDtreatment@sdcounty.ca.gov with questions.

Actions Requested

1. Providers administering vaccines should:
 - Continue to vaccinate patients in Phase 1A and those [65 years and older](#) in addition to the essential sectors newly eligible in Phase 1B.
 - Be aware of Phase 1A additional [clarifications](#) on eligibility for Phase 1A and 1B.
2. All providers should stay up to date on CDC's [Interim Clinical Considerations for Use of mRNA COVID-19 Vaccines Currently Authorized in the United States](#) (last updated 02/10/2021).
3. Use [myCAvax](#) for vaccine provider enrollment/management.
4. Refer [medically eligible](#) patients who are symptomatic with COVID-19 and at high risk for progression to severe COVID-19 to the [Monoclonal Antibody Regional Center](#) for treatment.
5. Providers should:
 - Report vaccine-related adverse events to the [Vaccine Adverse Event Reporting System \(VAERS\)](#)
 - Strongly encourage vaccine recipients to enroll in [V-safe](#) for active monitoring.

CAHAN San Diego

County of San Diego Health & Human Services Agency
 Epidemiology and Immunization Services Branch
 Phone: (619) 692-8499; Fax: (858) 715-6458
 Urgent Phone for pm/weekends/holidays: (858) 565-5255

E-mail: cahan@sdcounty.ca.gov
 Secure Website: <https://member.everbridge.net/892807736722952/login>
 Public Website: <http://www.cahansandiego.com>



To: CAHAN San Diego Participants
Date: March 2, 2021
From: Public Health Services

Health Advisory Update #27: Coronavirus Disease 2019 (COVID-19) Variants

This health advisory informs physicians about emerging SARS-CoV-2 variants and the need to submit samples for whole genome sequencing in certain clinical situations.

Key Messages

- National, state, and local public health departments have been closely monitoring the evolving genome of the SARS-CoV-2 virus to determine the clinical and epidemiological impacts of variants of concern.
- Whole genome sequencing (WGS) of SARS-CoV-2 is necessary to better define the prevalence and clinical significance of variants of concern. Indications for specimen referral for WGS are provided in this advisory.

Situation

Viruses are constantly changing, and this includes SARS-CoV-2, the virus that causes COVID-19. These genetic mutations occur and accumulate over time and can lead to the emergence of new variants that may have different characteristics compared to viruses circulating earlier in the pandemic. Whole genome sequencing (WGS) allows monitoring of how the SARS-CoV-2 virus changes over time into new variants, understanding of how these changes affect the characteristics of the virus, and using this information to predict how emerging variants might impact health.

The California Department of Public Health (CDPH) recently released the attached health alert that summarizes information on current SARS-CoV-2 variants of concern. To date, the B.1.1.7 (i.e., United Kingdom or UK) variant has been detected in San Diego County and other parts of California, while the B.1.351 (i.e., South Africa) and P1 (i.e., Brazil) variants have not been reported in the state. There are also two variants of interest that are increasingly being found in isolates sequenced throughout the state, including San Diego County. The B.1.427 and B.1.429 (i.e., West Coast) variants are being monitored to determine whether they are variants of concern.

Current case counts for emerging variants may be found at the [national level](#) (updated by the Centers for Disease Control and Prevention three times a week), at the [state level](#) (updated every Thursday by CDPH), and in [San Diego County](#) (updated every Wednesday by the County Epidemiology Unit). More systematic WGS of SARS-CoV-2 is necessary to better define the prevalence of emerging variants in California and in San Diego County.

Actions Requested

1. Providers are requested to submit specimens for WGS from individuals with SARS-CoV-2 virus infection confirmed by nucleic acid testing who meet at least one of the following criteria:
 - Recent international travel other than to Mexico;
 - Exposure to persons with recent international travel (excluding Mexico);
 - Marked differences in real-time RT-PCR viral target(s) cycle threshold (Ct) values (e.g., ORF1ab target detected, N target detected, and S target **not detected**);
 - Possible re-infection (e.g., recurrence of symptoms with positive molecular testing or positive molecular testing at least 90 days after initial infection); or
 - Infection between 15 and 90 days of a complete series of vaccination (i.e., two doses for the Pfizer or Moderna vaccines, one dose for the Johnson & Johnson vaccine).
2. Providers can contact the County Epidemiology Unit for assistance in both evaluation and specimen submission during business hours Monday through Friday by calling 619-692-8499. San Diego providers should not directly contact CDPH to request WGS and requests should not be made after hours.
3. Providers should report any receipt of sequence data identifying a variant of concern to the County Epidemiology Unit within one working day using a [Confidential Morbidity Report](#) faxed to 858-715-6458 or sent by secure email to epi-cdreporting.hhsa@sdcounty.ca.gov.

Thank you for your participation.

CAHAN San Diego

County of San Diego Health & Human Services Agency
Epidemiology and Immunization Services Branch
Phone: (619) 692-8499; Fax: (858) 715-6458
Urgent Phone for pm/weekends/holidays: (858) 565-5255
E-mail: cahan@sdcounty.ca.gov
Secure Website: <http://cahan.ca.gov>
Public Website: <http://www.cahansandiego.com>

Effective 01/23/21, and until further notice from the County Public Health Officer, the County of San Diego is only vaccinating people who live or work in San Diego County.

Additional Clarification on California Department of Public Health Phase 1A settings and healthcare workers

- Adult Day/Health Program staff
- Alternative medical practitioners
- Ambulatory surgical centers
- Ancillary staff at COVID-19 testing sites
- Ancillary staff at long-term care facilities, such as transport, consulting specialists, dentists
- Blood bank/blood center workers
- Cal/OSHA personnel working on COVID-19 response
- Coroner's office staff with exposure to infectious agents
- Delivery vendors for healthcare facilities that enter the facilities for drop-off/pick-up
- Disability support workers
- Eye and tissue donation center staff (with direct exposure to COVID-19 positive tissue)
- Formal and informal caregivers for elderly and people with disabilities, including private duty caregivers and nursing aides caring for elderly in their homes
- Healthcare workers requiring vaccinations to return to work
- Homeless outreach workers
- Inpatient and outpatient hospice workers
- Janitors or cleaning staff in contact with COVID-19 patients or healthcare facilities; applies to offices where medical or therapeutic services are provided
- Laboratory workers who work in a facility that has CLIA licensure or is conducting research with SarsCOV2
- Lactation consultants
- Lifeguards
- Long-term care ombudsman staff
- Manufacturers of vaccine, therapeutics, devices, supplies or PPE to support the COVID-19 response
- Mortuary or funeral staff
- Non-emergency medical transportation
- Non-San Diego County residents who work in healthcare settings in San Diego County, regardless of immigration status
- Ophthalmology
- Out-of-hospital midwives
- Pain treatment
- Pharmacy clerk
- Physician or healthcare workers with out of state license
- Receptionists who check-in and pre-screen clients that enter the office and conduct temperature screenings where health services are being provided
- Reproductive Health Clinics, such as Planned Parenthood
- Respiratory care centers
- Senior care managers
- Ski Patrol
- Social workers and case managers providing services directly in the home
- Staff that are currently working frontline in offices where medical or therapeutic services are provided
- State Hospital patients
- Transportation drivers for adult day care facilities
- Unemployed or active-licensed physicians seeking employment

A partir del 23/01/21, y hasta nuevo aviso del Oficial de Salud Pública del Condado, el Condado de San Diego está vacunando solo a las personas que viven o trabajan en el Condado de San Diego.

Aclaración adicional sobre los entornos de Fase 1A del Departamento de Salud Pública de California y los trabajadores de la salud

- Personal de los centros de día/salud de adultos
- Médicos alternativos
- Centros quirúrgicos ambulatorios
- Personal auxiliar en los sitios de prueba contra COVID-19
- Personal auxiliar en centros de atención a largo plazo, como transporte, especialistas en consultoría, dentistas
- Trabajadores de almacenamiento de sangre/centros de sangre
- Personal de Cal/OSHA que trabaja en la respuesta al COVID-19
- Personal de la oficina del forense con riesgo de exposición a los agentes infecciosos
- Trabajadores de entrega para instalaciones de atención médica que entran a las instalaciones para dejar/recoger
- Trabajadores de apoyo a la discapacidad
- Personal del centro de donación de ojos y tejidos (con exposición directa a tejido positivo para COVID-19)
- Cuidadores formales e informales de ancianos y personas con discapacidades, incluidos cuidadores privados y auxiliares de enfermería que cuidan ancianos en sus hogares
- Trabajadores que ofrecen servicios a las personas sin hogar
- Trabajadores de la salud que requieren vacunas para regresar al trabajo
- Trabajadores de cuidados paliativos para pacientes hospitalizados y ambulatorios
- Empleados de limpieza o porteros en contacto con pacientes con COVID-19 o centros de salud; se aplica a las oficinas donde se brindan servicios médicos o terapéuticos
- Trabajadores de laboratorio que trabajan en una instalación que tiene una licencia CLIA o que están realizando investigaciones con SarsCOV2
- Consultoras de lactancia
- Salvavidas
- Defensor del pueblo de cuidados a largo plazo
- Fabricantes de vacunas, productos terapéuticos, dispositivos, suministros o EPP para respaldar la respuesta al COVID-19
- Trabajadores de funerarias o mortuorios
- Transporte médico que no sea de emergencia
- Personas que no son residentes de San Diego pero trabajan en entornos de atención médica en condado de San Diego
- Oftalmología
- Parteras que no trabajan en el hospital
- Tratamiento del dolor
- Secretario de farmacia
- Médico o trabajadores de la salud con licencia de otro estado
- Recepcionistas que registran y revisan a clientes que vienen a la oficina y hacen revisión de temperatura donde proveen los servicios de salud
- Clínicas de salud reproductiva, Planned Parenthood
- Centro de cuidados respiratorios
- Gerentes de cuidado de personas mayores
- Patrulla de esquí
- Trabajadores sociales y administradores de casos que brindan servicios directamente en el hogar
- Personal que trabaja en frente actualmente en oficinas donde se administran servicios médicos y de terapia. Pacientes del hospital estatal
- Conductores de transporte para instalaciones de día para adultos
- Médicos con licencia activos o desempleados que buscan empleo