



CORONAVIRUS
DISEASE 2019 (COVID-19)

WEEKLY UPDATE

LONG-TERM CARE AND RESIDENTIAL CARE FACILITIES

Wednesday, November 25, 2020

Greetings Long-Term Care and Residential Care Facilities of San Diego County,

Please find information below regarding the latest guidance and resources from county, state, and federal organizations, including **new updates**:

- All Facilities Letter (AFL) provides guidance to Skilled Nursing Facilities regarding movement of patients/residents in the healthcare continuum during seasonal surges and COVID-19 pandemic **(AFL 20-87)**
- AFL that supersedes AFL 20-86 and provides COVID-19 infection control recommendations during holiday celebrations, including additional guidance for intermediate care facilities for the developmentally disabled – habilitative, nursing, and continuous nursing **(AFL 20-86.1)**
- California Department of Public Health announced membership in the Community Vaccine Advisory Committee regarding COVID-19 vaccine distribution and allocation
- Provider Information Notice (PIN) provides guidance to all Adult and Senior Care Licensees on COVID-19 infection control recommendations for celebrations and outings **(PIN 20-42-ASC)**
- California Health Alert Network (CAHAN) **Potential Safety Power Shutoff** may impact San Diego County on 11/26/20 – 11/28/20
- National Institute for Occupational Safety and Health approves first elastomeric half mask respirator without an exhalation valve

- Pre-registration instructions at a County testing site when you do not have an appointment

As a reminder, if you have a positive COVID-19 case at your facility, please report it by calling the County Epidemiology Unit phone line at (619) 692-8499 or (858) 565-5255 for after-hours or on the weekend. The County as well as your State licensing departments are here to support you.

For additional information, please see our website www.coronavirus-sd.com/LTC. Please email us at moc.logs.hhsa@sdcounty.ca.gov if you need personal protective equipment.

Thank you for your continued efforts and partnership with the County of San Diego. We wish you a safe Thanksgiving holiday.



Announcements and News



California Department of Public Health

CDPH publishes news and All Facilities Letters (AFLs) regularly. If you would like to receive email notifications of AFLs, please submit your request to LNCPolicy@cdph.ca.gov.

NEW! Letter to Skilled Nursing Facilities and General Acute Care Hospitals:

AFL 20-87 – November 24, 2020

This AFL provides guidance for admission and readmission of Skilled Nursing Facility residents during seasonal hospital surges and the COVID-19 pandemic. This AFL also provides guidance on working with local public health departments and hospital discharge planners to ensure appropriate placement of resident following hospital discharge. [Click here to read AFL 20-87](#)

NEW! Letter to Long-Term Care Facilities: **AFL 20-86.1** – November 20, 2020

This AFL provides COVID-19 infection control recommendations during holiday celebrations for residents, families, and facilities. This includes guidance for private gatherings, resident placement after returning to the facility, and communal activities in facilities. This revision provides additional guidance for intermediate care facilities for the developmentally disabled – habilitative, nursing, and continuous nursing (ICF/DD-H-N-CN). [Click here to read AFL 20-86.1](#)

NEW! CDPH announced membership in the **Community Vaccine Advisory Committee** with broad representation from organizations throughout California to provide input into the distribution and allocation of the COVID-19 vaccine. Committee members will advise the state on advancing principles of safety, equity, and transparency in vaccine distribution and allocation. [Click here to read the news release.](#)

[Click here to see a full list of recent AFLs](#)

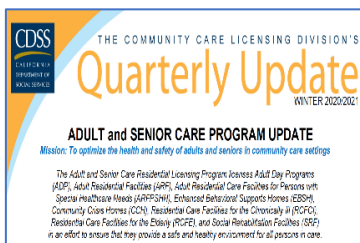


California Department of Social Services

The Community Care Licensing Division (CCLD) of the California Department of Social Services (CDSS) publishes Provider Information Notices (PINs) to communicate important license related information to CCLD-licensed providers. The local San Diego Adult and Senior Care Regional Office can be reached at (619) 767-2300 or CCLASCPSanDiegoRO@dss.ca.gov.

NEW! All Adult and Senior Care Licensees – November 20, 2020

PIN 20-42-ASC provides guidance on COVID-19 infection control recommendations for celebrations and outings for licensees and staff, residents, friends, and families. This PIN includes guidance for private gatherings, resident cohorting after returning to the facility, and group activities in facilities. [Click here to read PIN 20-42-ASC](#)



The Community Care Licensing Division's **Winter 2020/2021 Quarterly Update** is now available and provides important Adult and Senior Care Program updates. Inside this issue: Deputy Director's Message, Take Steps to Prevent Colds & Flu, Reviewing and Updating of Facility Files, Ways Checklists are Used to Ensure Compliance, Holiday Blues, Roles of Virtual Tools in Today's Environment, Exercise for Seniors, Supporting Residents in Managing Diabetes and COVID-19, and Caregiver Background Check Bureau Guardian System Update. [Click here for CCLD's Winter 2020/2021 Quarterly Update.](#)

[Click here to browse the full list of recent PINs](#)



Potential Safety Power Shutoff in San Diego County

NEW! The California State Warning Center received notification from San Diego Gas & Electric (SDGE) of a Potential Safety Power Shutoff (PSPS). SDGE PSPW EVENT 11242020 may impact San Diego County. **The proposed date and time for de-energization is 11/26/10 at 2100 hours (9:00 PM) to 11/28/20 1400 hours (2:00 PM).**

Extreme weather conditions that may cause or intensify a fire will lead to execution of a PSPS.

Due to the possibility of an extended power shutoff to your facility, check generator fuel supplies, and/or plans for obtaining more fuel or evacuating if necessary.

If the PSPS program is in effect and causes the power to go out in your facility, this triggers an “unusual event” as defined in the Public Health and Medical Emergency Operations Manual and response protocol.

Report any outages related to the PSPS to the L&C District Office and to the local Medical and Health Operational Area Coordinator (MHOAC).

AFL 20-59 - Public Safety Power Shutoff Power Outage Reporting, reminds facilities that licensing regulations require facilities to report the unusual occurrence of a PSPS event to the California Department of Public Health (CDPH), Center for Health Care Quality (CHCQ) Licensing and Certification (L&C) Program. AFL 20-59:

<https://www.cdph.ca.gov/Programs/CHCQ/LCP/Pages/AFL-20-59.aspx>

To register for updates to this PSPS event or for future events please contact **San Diego Gas & Electric-** <https://www.sdge.com/our-commitment-wildfire-safety> or call 1-800-411-7343



NIOSH Approves First Elastomeric Half Mask Respirator Without an Exhalation Valve

NEW! The National Institute for Occupational Safety and Health (NIOSH) eNews Flash:

Respirators are an important resource in reducing the transmission of SARS-CoV-2, the virus that causes COVID-19. When workers wear respirators to protect themselves against workplace hazards, they also need to maintain source control to protect others in case they are themselves

sick with COVID-19. Concerns were raised that respirators with exhalation valves may allow unfiltered exhaled air to escape into the environment, therefore not offering source control.

NIOSH is working to identify solutions to address exhalation valve concerns in both filtering facepiece respirators and elastomeric half mask respirators (EHMR). Several research studies are underway on this issue.

In parallel with the NIOSH research on exhalation valves, manufacturers have been conducting research and development to produce an elastomeric respirator that addresses the exhalation valve concerns.

To this end, NIOSH has approved the first EHMR without an exhalation valve. This respirator is approved for use with either P95 or P100 particulate filters (**NIOSH approval numbers: TC-84A-9260, TC-84A-9261, TC-84A-9256, TC-84A-9257**). This EHMR can be used for both personal protection and source control. Exhalation is accomplished through the particulate filters meeting all NIOSH requirements, thereby allowing it to also serve as a means of source control since it will maintain the high level of filtration upon exhalation. This EHMR can be cleaned and disinfected as part of a respiratory protection program's standard procedures. The particulate filters are available with an integrated splash guard to improve the ease of completing a user seal check, to help protect from liquids, and to aid in wiping down the filter housing with disinfectant.

More information on NIOSH-approved respirators, including the first EHMR without an exhalation valve, is available on the [NIOSH Certified Equipment List](#)



Waiting in line when you visit a County of San Diego testing site without an appointment? Save time and pre-register. Here's how...

NEW! If you visit a County of San Diego testing site and do not have an appointment, you can use a QR code to help speed up your registration while you wait in line.

- Look for the QR code that is posted at each County Walk Up Testing Site. Scan that code with your cell phone by opening the Camera App on the cell phone and hover over the code (like you are taking a photo of it). The phone will recognize the QR code and will show a notification.

- Tap that notification to open the “HealthBook” link that is associated with the QR code.
- On the HealthBook website page, scroll to the bottom of the page and enter the unique site code of the day (this is posted at the testing site along with the QR code).
- Answer the registration questions.
- After completing the questions, you will see a green confirmation that registration is complete.

Don't have a cell phone? Not to worry. A County staff will use a laptop to register you.

Remember to bring a form of identification for verification.

Please see attached PDF “NAME-QR Process for Pre-Registration FINAL Pg 2-3 Walk in” for more information on the steps to enter the site code.

For more detailed information on testing in San Diego County, please check out the County [webpage here](#).



Characterization of COVID-19 in Assisted Living Facilities – 39 States

The Centers for Disease Control and Prevention’s Morbidity and Mortality Weekly Report includes an important article, “Characterization of COVID-19 in Assisted Living Facilities – 39 States, October 2020”.

By October 15, 2020, in 39 states with available data, 22% of ALFs reported one or more cases of COVID-19 among residents and staff members. Among ALF residents with COVID-19, 21% died, compared with 3% who died among the general population with COVID-19.

[Click here to read Characterization of COVID-19 in Assisted Living Facilities – 39 States, October 2020.](#)



Case Rate by Zip Code Map

As COVID-19 cases continue to rise in the state of California, the County of San Diego is working closely with federal and state agencies and the local healthcare community to monitor and test for the spread of COVID-19 virus in the region. To view an interactive COVID-19 case rate by ZIP code map, click [here](#).



San Diego County Public Health Order

The Public Health Order has been updated and is effective November 21, 2020. [Read the latest order.](#)



COVID-19 Holiday Guidance Steps to Stay Healthy

To minimize the spread of COVID-19 and keep families safe during the upcoming holidays, the County of San Diego has issued guidance that outlines recommendations, what's not recommended, what's not allowed, and safer alternatives for traditional activities that can be high-risk for spreading viruses.

- **Guidance for Celebrating Thanksgiving flyer** ([PDF](#))
- **Celebrating Winter Holidays Guidance** ([PDF](#))

For more information on steps to stay safe during the entire holiday season, visit the County of San Diego's Holidays and COVID-19 webpage [here](#).



Flu Vaccine Information

The influenza vaccine is available at doctors' offices and pharmacies throughout San Diego County and is covered by medical insurance. For **Flu Season 2020-2021 information**, check out the County of San Diego Immunization Program [influenza webpage](#) and find information on [Flu Vaccine Locations](#). For additional information, [click here](#) for the Centers for Disease Control and Prevention ways to protect your health this season.

Category	Value	Target	Status
COVID-19 Testing Positivity Rate	6.7%	72%	On Track
COVID-19 Testing Positivity Rate	20%	-2%	On Track
COVID-19 Testing Positivity Rate	1%	36%	On Track
COVID-19 Testing Positivity Rate	0.3%	53%	On Track
COVID-19 Testing Positivity Rate		87%	On Track
COVID-19 Testing Positivity Rate		3.6%	On Track
COVID-19 Testing Positivity Rate		97%	On Track
COVID-19 Testing Positivity Rate		95%	On Track
COVID-19 Testing Positivity Rate		38%	On Track

REMINDER to check the County Triggers Dashboard for the Testing Positivity Rate

The frequency of routine testing of skilled nursing facility staff depends on the San Diego County Positivity Rate. Please click the link below to access the **COVID-19 Testing Positivity Rate**.

[View the current Positivity Rate here](#) (Item #10: Testing Positivity).



Upcoming Telebriefings



Friday, December 11
at 4:00 pm

Telebriefing for **Long-Term Care and Residential Care Facilities** with Special Guest, Dr. Michael Krelstein, County of San Diego Behavioral Health Services.

WHEN: Friday, December 11, 2020, at 4:00 p.m.

Click [here](#) to learn more about the telebriefing, [submit questions](#) before each telebriefing, and visit the **Long-Term Care and Residential Care Facilities** sector support [webpage](#).



Friday, December 18
at 4:00 pm

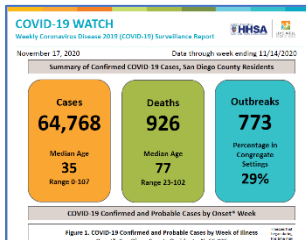
Telebriefing for **Older Adult and Disability Service Providers**.

WHEN: Friday, December 18, 2020, at 4:00 p.m.

Click [here](#) to learn more about the telebriefing, [submit questions](#) before each telebriefing, and visit the **Older Adult and Disability Service Providers** sector support [webpage](#).



Ongoing Programs, Services, and Resources

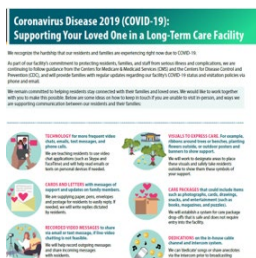


County of San Diego COVID-19 Dashboard and Weekly “COVID-19 Watch” Report

The County of San Diego publishes a weekly surveillance report on the coronavirus-sd.com website called “COVID-19 Watch”.

[Click here to review the report.](#)

Visualize and track data real time on the interactive web-based dashboard developed by the County of San Diego Epidemiology and Immunization Services Branch. [See the dashboard here.](#)



Supporting Your Loved One in a Long-Term Care Facility

Nursing homes and long-term care facilities can communicate actions the facility is taking to protect them and/or their loved ones, any visitor restrictions that are in place, and actions residents and families should take to protect themselves in the facility, emphasizing the importance of

hand hygiene and source control. [Please click here to access this document.](#)



- [COVID-19 in Nursing Homes and Long-Term Care Facilities](#)
- [Considerations for Use of SARS-CoV-2 Antigen Testing in Nursing Homes](#)
- [Printable Algorithm](#) for considerations for testing asymptomatic and symptomatic residents or HCP.
- [Guidelines on Masks, How to Select, Wear, and Clean Your Mask](#)
- [Guidelines for Group Homes for Individuals with Disabilities](#)
- [Guidelines for Direct Service Providers of Individuals with Disabilities](#)
- [Considerations When Preparing for COVID-19 in Assisted Living Facilities](#)
- [Considerations for Memory Care Units in Long-term Care Facilities](#)

For general information about COVID-19 from the CDC, please visit www.cdc.gov/coronavirus.



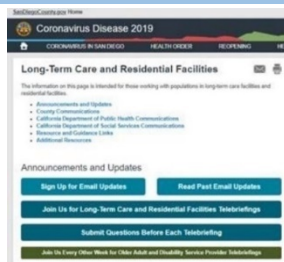
211 San Diego

For health or testing related questions, contact your healthcare provider. For general questions about COVID-19, information about community resources, or if you are uninsured, call **2-1-1 San Diego**. [Click here](#) for free COVID-19 testing information.



General COVID-19 Information from Federal and State Organizations

- [Centers for Disease Control and Prevention – COVID-19](#)
- [California Department of Public Health, Immunization Branch – COVID-19](#)
- [California Department of Social Services – COVID 19](#)



Recent Email Updates from the County of San Diego Long-Term Care and Residential Care Sector

- [November 19, 2020 Update](#)
- [November 10, 2020 Update](#)
- [November 5, 2020 Update](#)

[Click here to browse all past email updates.](#)



Stay Connected



For questions related to long-term care and residential care facilities, please email: COVID-LTC@sdcounty.ca.gov.



Get the latest information about what's happening across the county with COVID-19.



Text **COSD COVID-19** to **468-311**
to get text alert updates from the County of San Diego.



Step 1: Scroll to the bottom of the page and enter the unique Site Code.

The screenshot shows a mobile browser interface for the County of San Diego COVID-19 Test Registration page. At the top, the browser address bar displays "sdcounty.service-now.com". Below the header, there is a section with text: "Residents can schedule a drive-up testing appointment below or call 2-1-1. State Testing Appointments: County Residents can visit LHI or also call (888) 634-1123 to schedule a walk-up testing appointment." Two red buttons are visible: "Coronavirus Disease 2019 Information" and "Testing Information". Below these buttons, a black arrow points to a text input field labeled "Please enter the Site Code:". Underneath the input field is a dark blue "Continue" button. At the bottom of the page, a red banner contains a question mark icon and the text "More about COVID-19 resources and response »".

Camera LTE 9:11 AM 69%

AA sdcounty.service-now.com

County of San Diego | COVID-19 Test Registration

Residents can schedule a drive-up testing appointment below or call 2-1-1.

State Testing Appointments: County Residents can visit [LHI](#) or also call (888) 634-1123 to schedule a walk-up testing appointment.

Coronavirus Disease 2019 Information

Testing Information

Please enter the Site Code:

Continue

More about COVID-19 resources and response »

Step 2: Answer the Registration Questions

Camera LTE 9:33 AM 66%

sdcounty.service-now.com

County of San Diego | COVID-19 Test Registration

COVID-19 Testing

Appointment Scheduling

*What are your Symptoms? / ¿Cuáles son tus síntomas?

-- None --

*Do you identify with any of these risk categories? / ¿Se identifica con alguna de estas categorías de riesgo?

-- None --

*Do you have a primary care physician? / ¿Tiene un médico de atención primaria?

-- None --

[More about COVID-19 resources and response »](#)

Contact
General County Information
(858) 694-3900
2-1-1 San Diego

© Copyright 2020 County of San Diego. All rights reserved.

Sprint LTE 9:38 AM 63%

sdcounty.service-now.com

County of San Diego | COVID-19 Test Registration

CONFIRMATION APPT0001227589

Client First Name / Nombre del cliente: [REDACTED]

Client Last Name / Apellido del cliente: [REDACTED]

Client Phone Number / Número de teléfono del cliente: (909) [REDACTED]

Email / Correo electrónico: [REDACTED]

Tuesday
21 Jul 2020

Testing Site Address
Will Appear Here

[More about COVID-19 resources and response »](#)

Contact
General County Information
(858) 694-3900
2-1-1 San Diego

© Copyright 2020 County of San Diego. All rights reserved.

Step 3: Upon completing the questions, you will be given a **GREEN Confirmation that your registration is complete:**