



CORONAVIRUS
DISEASE 2019 (COVID-19)

WEEKLY UPDATE

LONG-TERM CARE AND RESIDENTIAL CARE FACILITIES

Thursday, December 10, 2020

Greetings Long-Term Care and Residential Care Facilities of San Diego County,

Please find information below regarding the latest guidance and resources from county, state, and federal organizations, including **new updates**:

- All Facilities Letter (AFL) notifies all facilities on state-run alternate care sites and guidance for the transfer of COVID-19 positive patients to alleviate strain on hospitals and skilled nursing facilities (**AFL 20-48.2**)
- Notes from the California Department of Public Health conference call for Skilled Nursing Facilities to provide updates on COVID-19 (December 2 and 3, 2020)
- Community Care Licensing Division notice regarding enrollment of all Adult and Senior Care Licensees into the Centers for Disease Control and Prevention **Pharmacy Partnership for Long-Term Care Program** for COVID-19 Vaccination
- California Department of Social Services' **Adult Residential Facility Medication Guide**
- Southern California **Regional Stay At Home Order** and updated **Public Health Order**
- **Reminder:** Long-Term Care and Residential Care Facility telebriefing being held **this Friday, 12/11, at 4:00 pm** with special guest speaker, Dr. Michael Krelstein, County of San Diego Behavioral Health Services.

As a reminder, if you have a positive COVID-19 case at your facility, please report it by calling the County Epidemiology Unit phone line at (619) 692-8499 or (858) 565-5255 for after-hours or on the weekend. The County as well as your State licensing departments are here to support you.

For additional information, please see our website www.coronavirus-sd.com/LTC. Please email us at moc.logs.hhsa@sdcounty.ca.gov if you need personal protective equipment.

Thank you for your continued efforts and partnership with the County of San Diego.



Announcements and News



California Department of Public Health

CDPH publishes news and All Facilities Letters (AFLs) regularly. If you would like to receive email notifications of AFLs, please submit your request to LNCPolicy@cdph.ca.gov.

NEW! Letter to All Facilities: AFL 20-48.2 – December 7, 2020

This AFL provides information on state-run alternate care sites and guidance for the transfer of COVID-19 positive patients to alleviate strain on hospitals and skilled nursing facilities and ensure patient safety. It also addresses transfers to congregate living health facilities licensed by the California Department of Social Services. This guidance has been updated to revise the admission criteria and to provide additional information regarding effectuating a transfer between the alternate care site and health facility.

[Click here to read AFL 20-48](#)

NEW! Notes from the California Department of Public Health conference call on infection prevention for skilled nursing facilities on December 2, 2020, and a conference call for skilled nursing facilities on December 3, 2020 to provide updates on infection prevention.

Please see attached PDF titled “AFC-SNF+IP+Call+Notes+12_2_20”

[Click here to see a full list of recent AFLs](#)



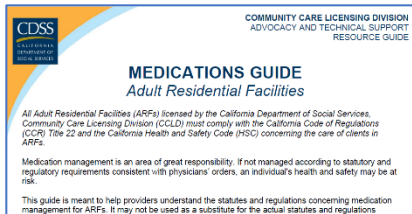
California Department of Social Services

The Community Care Licensing Division (CCLD) of the California Department of Social Services (CDSS) publishes Provider Information Notices (PINs) to communicate important license related information to CCLD-licensed providers. The local San Diego Adult and Senior Care Regional Office can be reached at (619) 767-2300 or CCLASCPSanDiegoRO@dss.ca.gov.

NEW! Notice to All Adult and Senior Care (ASC) Licensees – December 7, 2020

The Community Care Licensing Division **has enrolled all ASC facilities** into the Centers for Disease Control and Prevention's **Pharmacy Partnership for Long-Term Care Program** that partners with CVS and Walgreens pharmacies to provide on-site no-cost COVID-19 vaccinations of residents in ASC facilities. This program provides end-to-end management of the COVID-19 vaccination process, including cold chain management, on-site vaccinations, and fulfillment of reporting requirements. Facility staff who have not received a COVID-19 vaccine can also be vaccinated under this program. Please note, this program is not mandatory and facilities who care to do so may opt out of this program. For more information, [click here to read Pharmacy Partnership for Long-Term Care Program for COVID-19 Vaccination FAQs](#). For specific questions, please contact eocevent494@cdc.gov.

NEW! Adult Residential Facility Medication Guide – December 7, 2020



This guide is meant to help providers understand the statutes and regulations concerning medication management for Adult Residential Facilities. This guide has been published and is available on the CDSS website. [Click here to read the guide.](#)

All Residential Care Facilities for the Elderly- Continuing Care Contracts – December 1, 2020

PIN 20-43-ASC-CCR shares the recent Adult and Senior Care PIN 20-42-ASC which provides guidance on COVID-19 infection control recommendations for celebrations and outings for licensees and staff, residents, friends, and families. This PIN includes guidance for private gatherings, resident cohorting after returning to the facility, and group activities in facilities. Pages five and six include Continuing Care Retirement Community-specific information. [Click here to read PIN 20-43-ASC-CCR](#)

[Click here to browse the full list of recent PINs](#)



Healing After Loss Virtual Presentations

This presentation will focus on practical concerns of adults who are grieving the loss of a loved one during this holiday season.

Strategies for Coping with Grief – December 14, 2020 from 3:30-4:30 pm

Register individually either by:

- Calling 1-800-82-sharp (1-800-827-4277)

- Registering online [here](#).

- You can attend via phone, computer or mobile device (smartphone or tablet). You will be sent the login instructions in a separate email from your registration confirmation.



COVID-19 Holiday Guidance

Steps to Stay Healthy

To minimize the spread of COVID-19 and keep families safe during the upcoming holidays, the County of San Diego has issued guidance that outlines recommendations, what's not recommended, what's not allowed, and safer alternatives for traditional activities that can be high-risk for spreading viruses.

- **Celebrating Winter Holidays Guidance** ([PDF](#))

For more information on steps to stay safe during the entire holiday season. The holiday guidance is available in **8 languages**; visit the County of San Diego's Holidays and COVID-19 webpage [here](#).



Case Rates by Zip Code

The County of San Diego is working closely with federal and state agencies and the local healthcare community to monitor and test for the spread of COVID-19 virus in the region. To view an interactive COVID-19 case rates by ZIP code map, click [here](#).



Regional Stay At Home Order and Public Health Order

UPDATED! The Southern California intensive care unit bed capacity has dropped below 15%, requiring San Diego County to implement a [Regional Stay At Home Order](#) that prohibits gatherings of any size and closes operations in multiple sectors, including restaurants, bars, wineries and personal services. For additional information, visit the [County News Center](#).

The San Diego County **Public Health Order** has been updated, effective December 6, 2020.

[Read the latest order.](#)



Flu Vaccine Information

The influenza vaccine is available at doctors' offices and pharmacies throughout San Diego County and is covered by medical insurance. For **Flu Season 2020-2021 information**, check out the County of San Diego Immunization Program [influenza webpage](#) and find information on [Flu Vaccine Locations](#). For additional information, [click here](#) for the Centers for Disease Control and Prevention ways to protect your health this season.

Category	Value	Target	Status
1. Case Rate	6.7%	72%	On Track
2. Hospitalization Rate	20	2%	On Track
3. ICU Rate	1%	36%	On Track
4. Death Rate	0.3%	53%	On Track
5. Testing Positivity Rate	38%	87%	On Track

REMINDER to check the County Triggers Dashboard for the Testing Positivity Rate

The frequency of routine testing of skilled nursing facility staff depends on the San Diego County Positivity Rate. Please click the link below to access the **COVID-19 Testing Positivity Rate**.

[View the current Positivity Rate here](#) (Item #10: Testing Positivity).



Upcoming Telebriefings



**Friday, December 11
at 4:00 pm**

Telebriefing for **Long-Term Care and Residential Care Facilities** with Special Guest, Dr. Michael Krelstein, County of San Diego Behavioral Health Services.

WHEN: Friday, December 11, 2020, at 4:00 p.m.

Please [pre-submit your questions in advance here](#). Participants will have the opportunity to ask questions during the call through the online chat feature on the Zoom platform.

Join the telebriefing using one of the options below:

- Option 1 | Computer (preferred):
 - Click on the following link <https://zoom.us/j/218631109>
 - Meeting ID: 218 631 109
 - If you have any difficulties accessing the participant link, please use option 2.
- Option 2 | Phone:
 - Dial-In Number: 1 (669) 900-6833 or 1 (346) 248-7799
 - Meeting ID: 218 631 109.



Telebriefing for **Older Adult and Disability Service Providers.**

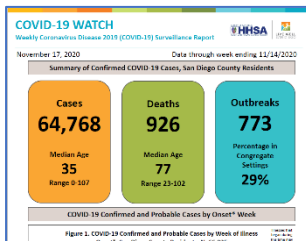
**Friday, December 18
at 4:00 pm**

WHEN: Friday, December 18, 2020, at 4:00 p.m.

Click [here](#) to learn more about the telebriefing, [submit questions](#) before each telebriefing, and visit the **Older Adult and Disability Service Providers** sector support [webpage](#).



Ongoing Programs, Services, and Resources

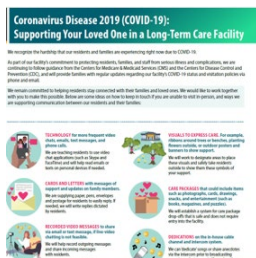


County of San Diego COVID-19 Dashboard and Weekly “COVID-19 Watch” Report

The County of San Diego publishes a weekly surveillance report on the coronavirus-sd.com website called “COVID-19 Watch”.

[Click here to review the report.](#)

Visualize and track data real time on the interactive web-based dashboard developed by the County of San Diego Epidemiology and Immunization Services Branch. [See the dashboard here.](#)



Supporting Your Loved One in a Long-Term Care Facility

Nursing homes and long-term care facilities can communicate actions the facility is taking to protect them and/or their loved ones, any visitor restrictions that are in place, and actions residents and families should take to protect themselves in the facility, emphasizing the importance of hand hygiene and source control. [Please click here to access this document.](#)



- [COVID-19 in Nursing Homes and Long-Term Care Facilities](#)
- [Considerations for Use of SARS-CoV-2 Antigen Testing in Nursing Homes](#)
- [Printable Algorithm](#) for considerations for testing asymptomatic and symptomatic residents or HCP.
- [Guidelines on Masks, How to Select, Wear, and Clean Your Mask](#)
- [Guidelines for Group Homes for Individuals with Disabilities](#)
- [Guidelines for Direct Service Providers of Individuals with Disabilities](#)

- [Considerations When Preparing for COVID-19 in Assisted Living Facilities](#)
 - [Considerations for Memory Care Units in Long-term Care Facilities](#)
- For general information about COVID-19 from the CDC, please visit www.cdc.gov/coronavirus.



211 San Diego

For health or testing related questions, contact your healthcare provider. For general questions about COVID-19, information about community resources, or if you are uninsured, call **2-1-1 San Diego**. [Click here](#) for free COVID-19 testing information.



General COVID-19 Information from Federal and State Organizations

- [Centers for Disease Control and Prevention – COVID-19](#)
- [California Department of Public Health, Immunization Branch – COVID-19](#)
- [California Department of Social Services – COVID 19](#)



Recent Long-Term Care and Residential Care Sector Email Updates

- [December 3, 2020 Update](#)
- [November 25, 2020 Update](#)
- [November 19, 2020 Update](#)

[Click here to browse all past email updates.](#)



Stay Connected



For questions related to long-term care and residential care facilities, please email: COVID-LTC@sdcounty.ca.gov.



Get the latest information about what's happening across the county with COVID-19.



Text **COSD COVID-19** to **468-311**

to get text alert updates from the County of San Diego.



COUNTY OF SAN DIEGO
HHSA
HEALTH AND HUMAN SERVICES AGENCY

10
LIVE WELL
SAN DIEGO

