



CORONAVIRUS
DISEASE 2019 (COVID-19)

WEEKLY UPDATE

LONG-TERM CARE AND RESIDENTIAL CARE FACILITIES

Friday, February 26, 2021

Greetings Long-Term Care and Residential Care Facilities of San Diego County,

Delays in vaccine shipments due to weather conditions resulted in some rescheduling at on-site vaccination clinics. Thank you for your flexibility. Facilities continue to receive vaccines from CVS and Walgreens. We are also working with County CalFire, Champions for Health, and heal Physicians Group to provide on-site vaccinations to help with non-ambulatory new admits, second dosing, vaccinating those who have changed their minds, or those facilities that may have experienced an outbreak. Please email or look for a survey sent from COVID-healthcaresetatus@sdcountry.ca.gov to let us know if you have any needs.

The CDC and CDPH are expected to release updated guidance in the near future regarding steps to follow after residents are fully vaccinated. Until then, please continue following the current CDPH and CDSS guidance.

Please find information below regarding the latest guidance and resources from county, state, and federal organizations, including **new updates**:

- **PowerPoint slides** from Long-Term Care Telebriefing on 2/25/2021:
 - o Dr. Sayone Thihalolipavan, County of San Diego **COVID-19 Update**
- **CAHAN Health Alert (2/25/2021):** SARS-CoV-2 Virus Variants of Concern Identified in California
- **CAHAN San Diego Health Advisory Update (2/23/2021):** Ongoing Risk of Highly Drug-Resistant Infections in Patients Following Hospitalization or Invasive Procedures in Mexico

- All Facilities Letter (AFL) notifies all facilities about a paperless process for issuing health care facility licenses, effective March 1, 2021 (**AFL 20-10**)
- Provider Information Notice (PIN) to all Adult and Senior Care Program Licensees informing providers of a mental health and supplemental security income required survey (**PIN 21-13-ASC**)
- **Free Rides** to Vaccination Appointments from MTS and NCTD
- County COVID-19 [Information and Resources in Other Languages](#) webpage provides various **educational materials in many different languages**
- [COVID-19 Vaccine Myths vs. Fact Handout](#) is available in English/Spanish
- **Feedback Welcome:** Thank you for your suggestions on ways we can improve our COVID-19 Long-Term Care and Residential Care Sector outreach, education, and communication efforts. The survey for your input can be found [here](#).
- Based on what we received, we will begin attaching a PDF version of this weekly update in case it is easier to view and/or print (please find attached).

As a reminder, if you have a positive COVID-19 case at your facility, please report it by calling the County of San Diego Public Health Epidemiology Unit at (619) 692-8499 or (858) 565-5255 for after-hours or on the weekend. The County as well as your State licensing departments are here to support you.

For additional information, please see our website www.coronavirus-sd.com/LTC. Please email us at moc.logs.hhsa@sdcounty.ca.gov if you need personal protective equipment.

Thank you for your continued efforts and partnership with the County of San Diego.

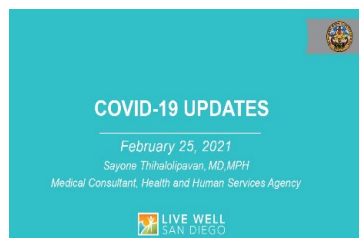


Announcements and News

PowerPoint Slides

Long-Term Care & Residential Care Facilities Telebriefing

February 25, 2021



NEW: Dr. Sayone Thihalolipavan, County of San Diego, Medical Consultant, provided a **COVID-19 Update**.

Please see attached PDF titled

“Dr Sayone_CountyCOVID19_Updates 2 25 21”.



California Department of Public Health Health Alert

New: SARS-CoV-2 Virus Variants of Concern Identified in California (February 25, 2021)

Recently, multiple variants of SARS-CoV-2 virus have been identified globally and nationally, including in California. These variants have one or more mutations in the spike protein, which is responsible for viral adhesion to cells and is also a major antigenic region for the human immune response. To learn more about the current variants of concern (B.1.1.7, B.1.351, P.1) **please see attached PDF** titled “CAHAN_Variants_022521_Final”.



California Health Alert Network San Diego Health Advisory Update

Updated: Ongoing Risk of Highly Drug-Resistant Infections in Patients Following Hospitalizations or Invasive Procedures in Mexico (February 23, 2021)

Key Messages:

- Highly drug-resistant infections are being reported in patients following hospitalization or invasive medical procedures in Mexico.
- Recommendations are provided to identify multidrug resistant organism in patients who have had hospitalizations or invasive procedures outside the United States. Proactive infection control measures will limit the transmission risk from these organisms.
- Providers should report all cases of carbapenemase-producing organisms and any case of a surgical site infection in patients who have recently undergone surgery in foreign medical facilities within one working day to the [Epidemiology Unit](#).

To learn more about the situation, background, recommendations for providers, and resources, **please see attached PDF** titled “CAHAN SD 02-23-2021” and “CDPH+VIM-CRPA+Mexico+2.15.21”



California Department of Public Health

CDPH publishes news and All Facilities Letters (AFLs) regularly. If you would like to receive email notifications of AFLs, please submit your request to

LNCPolicy@cdph.ca.gov.

NEW: Letter to All Facilities: [AFL 21-10](#) – February 22, 2021

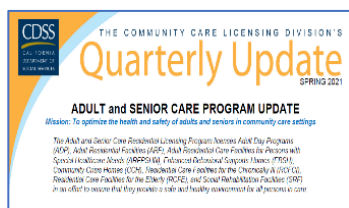
This AFL notifies all facilities that effective March 1, 2021, the California Department of Public Health, Centralized Applications Branch, will change the way it issues licenses to health care facilities. To increase efficiency and reduce the carbon footprint, a paperless process for issuing health care licenses will be implemented.

[Click here to see a full list of recent AFLs](#)



California Department of Social Services

The Community Care Licensing Division (CCLD) of the California Department of Social Services (CDSS) publishes Provider Information Notices (PINs) to communicate important license related information to CCLD-licensed providers. The local San Diego Adult and Senior Care Regional Office can be reached at (619) 767-2300 or CCLASCPSanDiegoRO@dss.ca.gov.



CDSS **Spring 2021 Quarterly Updates** is available on their website [here](#).

NEW: [PIN 21-13-ASC](#) (February 26, 2021) to all Adult and Senior Care Program Licensees to inform providers of a recent survey that has been distributed via email and will be distributed annually to all licensees of Adult Residential Facilities and Residential Care Facilities for the Elderly.

[PIN 20-29-CCLD](#) announces a **Helpline** resource for providers to obtain information on infection prevention and control best practices. A CCLD clinician will be available M-F (excluding holidays) from 8:00 am – 5:00 pm to answer questions related to infection prevention and control. **During business hours:** 1-844-538-8766 (Press #7 when prompted); **After business hours, on weekends, and on holidays:** 1-833-498-2027

[Click here to browse the full list of recent PINs](#)



Updated Public Health Orders

San Diego County Public Health Order (2/6/2021) Click [here](#).

Updated: Order of the Public Health Officer (2/12/2021):

- **Quarantine** guidance has been updated (page 2, number 2) Click [here](#).



Monoclonal Antibody Treatment is Available

Reminder:

- The [Monoclonal Antibody Regional Center](#) (MARC) is open to treat mild to moderate COVID-19 in adults and pediatric patients (12 years of age and older weighing at least 40 kg) with positive results of PCR or Rapid Antigen SARS-CoV-2 testing, and who are at high risk for progressing to severe COVID-19 and/or hospitalization. Treatment should be administered as soon as possible after positive results of SARS-CoV-2 testing, and within 10 days of symptom onset.
- The MARC is open 7 days a week from 8:00 AM to 8:00 PM at the Palomar Medical Center Downtown ([555 East Valley Parkway, Escondido, CA 92025](#)).
- Another MARC location in the South Region is being explored to provide services in the area.
- Treatment is available at **no-cost** to those who live or work in San Diego County, regardless of health insurance or immigration status.
- Patients 65 years of age or older do not require a referral and may call **(619) 685-2500** with questions and/or to schedule an appointment for COVID-19 monoclonal antibody treatment.
- Patients younger than 65 years old, talk to your doctor to see if you are medically eligible for this treatment and to receive a referral.

For questions, please email COVIDtreatment@sdcounty.ca.gov. For additional information, please visit www.sandiegocounty.gov/COVIDHealthProfessionals.

Please click on patient flyer links for more information:

[MARC Patient Flyer \(English\)](#), [MARC Patient Flyer \(Spanish\)](#)



Counterfeit Notification: 3M Surgical Respirators

Reports have increased of fake/counterfeit products related to the following three 3M surgical respirator models:

- 3M™ Health Care Particulate Respirator and Surgical Mask 1860;
- 3M™ Health Care Particulate Respirator and Surgical Mask 1860S; and
- 3M™ Aura™ Health Care Particulate Respirator and Surgical Mask 1870+.

Please see PDF attached titled “3m-counterfeit-communication-letter” for more information on Lot Codes and when to contact the anti-fraud hotline at 1-800-426-8688. It is strongly recommended to only purchase 3M respirators through 3M authorized distributors, or through existing contracting vehicles (i.e., Federal Supply Schedules).

For additional information, including tips to help identify counterfeit respirators, please check out the www.3M.com/covid/fraud website.



California COVID-19 Vaccination Program Update

Federal Retail Pharmacy Program Activation

The Federal Retail Pharmacy Program has been activated and our initial pharmacy partners, **CVS and Rite Aid**, started Friday, February 12. Select store locations have been identified for the initial rollout with a total of 128 CVS stores and 374 Rite Aid stores in CA. Both pharmacy partners will be using Moderna COVID-19 vaccine.

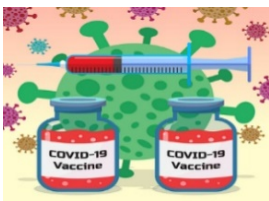
Target population includes people 65+ and healthcare workers. Appointments will be required. Eligible Californians should not contact individual stores for appointments or come to the store seeking a vaccination without an appointment. Eligible individuals should be directed to the following scheduling links below for an appointment:

CVS: <https://www.cvs.com/immunizations/covid-19-vaccine> (live February 11th)

Rite Aid: <https://www.riteaid.com/pharmacy/covid-qualifier> (live February 12th)

Additionally for CVS only, appointment can also be scheduled via CVS pharmacy app and eligible individuals without internet access can call **CVS at 800-746-7287** for assistance on scheduling.

For questions, please email: COVIDvaccinePharm@cdph.ca.gov



COVID-19 Vaccine Resources for Long-Term Care Facilities

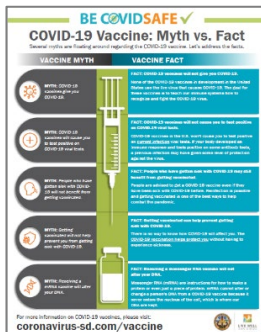
COVID-19 vaccine eligibility currently includes healthcare personnel, others in [Phase 1A](#) (Tiers 1-3), and those **65 years of age and older** (Phase 1B, Tier 1). Please continue to share the County [COVID-19 Vaccine webpage for appointments](#) with your staff and ambulatory residents.

If you are aware of residents' family members or friends who are 65 years of age or older and do not have access to a computer or someone to assist them, please encourage them to **dial 2-1-1** for help connecting with their health care provider or making a vaccination appointment at a County of San Diego site.

Reminder: Transportation- If you are aware of staff, ambulatory residents, and/or their family members who may need transportation to a vaccination site, the Metropolitan Transit System (MTS) and North County Transit District (NCTD) are offering **free rides** for everyone in the region who needs a lift to their vaccine appointment. Ride any bus, trolley, SPRINTER or COASTER for FREE with proof of vaccine appointment. MTS has created a [transit trip planner](#) with vaccine sites to help residents get to their appointments. For more information, visit the [MTS webpage](#).

There are also appointment ride options for seniors who are age 65 and over. They have free transportation options through the MTS, Facilitating Access to Coordinated Transportation (FACT), and through Medi-Cal Transportation Services. Please click on flyer for more information: [COVID-19 Vaccinations: Appointment Ride Options for Seniors Flyer \(English\)](#)

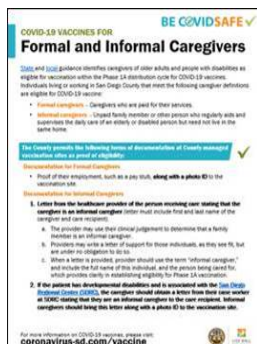
Reminder: COVID-19 vaccine presentations are available through the *Live Well San Diego Speaker's Bureau* that provides free presentations delivered by volunteer medical professionals, including doctors and nurses, who are subject matter experts. Fill out an [online interest form](#) on our *Live Well San Diego* website to request a presentation.



Reminder: COVID-19 Vaccine Myth vs. Fact handouts are available in English and Spanish.

Please click link below for the flyer:

[COVID-19 Vaccine – Myth vs. Fact \(English/Spanish\)](#)



Both **formal and informal caregivers** to elderly and people with disabilities are identified in the [additional Phase 1A priority groups](#) to receive the COVID-19 vaccine .

Formal Caregivers: Caregivers who are paid for their services.

Informal Caregivers: Unpaid family member or other person who regularly aids and supervises the daily care of an elderly or disabled person but need not live in the same home.

Reminder: Please click links below for the flyers, including documentation needed:

[COVID-19 Vaccination for Formal and Informal Caregivers \(English\)](#)

[COVID-19 Vaccination for Formal and Informal Caregivers \(Spanish/Español\)](#)

Updated: Please check out the County's webpage with COVID-19 educational materials in different languages. Please [click here](#) and scroll down the list of options in Spanish, Tagalog, Arabic, Aramaic, Chinese, Farsi, Japanese, Vietnamese, Korean, and more. The County COVID-19 [Information and Resources in Other Languages](#) webpage is a great resource.

Stay informed about COVID-19 vaccination information by bookmarking the [County COVID-19 vaccine webpage](#). Information regarding how the COVID-19 vaccine works, safety, and phases of vaccine administration, and more can be found on this webpage.

COVID-19 Vaccine Community Conversation Toolbox

The County of San Diego has created the [COVID-19 Vaccine Community Conversation Toolbox](#). This toolbox is primarily for healthcare workers (doctors and nurses who have been identified as trusted messengers of COVID-19 vaccine information) to have conversations about the COVID-19 vaccine. Fact sheets, links to important websites, handouts (English and Spanish), and Frequently Asked Questions are included.

CDC Vaccine Considerations

Please [click here](#) for some CDC vaccine considerations.

1. Both mRNA vaccines require a 2nd dose: Pfizer at 21 days and Moderna at 28 days
2. The second dose should NOT be administered any sooner than 21 days (Pfizer) or 28 days (Moderna)
3. The second dose of both mRNA vaccines may be administered up to 6 weeks after the first dose

Long-Term Care Facility Resources

Post Vaccine Considerations for Residents — While [this guidance](#) is intended for long-term care facilities, it could also be applied to patients in other healthcare settings. Considerations are based on the current understanding of signs and symptoms following COVID-19 vaccination, including timing and duration, and might change as experience with the vaccine accumulates.

Frequently Asked Questions about COVID-19 Vaccination in Long-Term Care Facilities (LTCF) — Making sure LTCF residents can receive COVID-19 vaccination as soon as vaccine is available will help save the lives of those who are most at risk of dying from COVID-19. CDC

updates [frequently asked questions](#) for Healthcare Infection Prevention and Control and Healthcare Professionals regularly based on feedback from professionals on the ground.

The [Vaccination Toolkit for Long-term Care Facilities](#) is available on CDC's website.

Importance of COVID-19 Vaccination for Residents of Long-term Care Facilities —

This guidance has been updated to include long-term care consent information for COVID-19 vaccination. To learn more visit, [Vaccinating Long-Term Care Facility Residents](#).

CDC Pharmacy Partnership for Long-Term Care Program

As you know, the Centers for Disease Control and Prevention's Pharmacy Partnership for Long-Term Care Program partners with **CVS and Walgreens pharmacies** to provide on-site no-cost COVID-19 vaccinations.

For more information, please see the Pharmacy Partnership for Long-Term Care Program for COVID-19 Vaccination [FAQs](#). If a facility would like to email CVS or Walgreens directly, please see below:

- **CVS Email:** CovidVaccineClinicsLTCF@CVSHealth.com
- **Walgreens Email:** immunizeltc@walgreens.com



COVID-19 Long-Term Care and Residential Care Facilities Sector

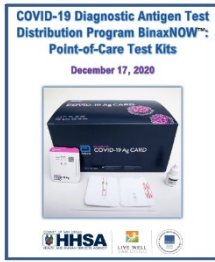
Feedback Welcome

Reminder: We welcome your input to help us improve our outreach, education, and communication efforts. This quick feedback form should take no longer than 5 minutes to complete.

Please click on the link below and provide us with your valuable input:

Long-Term Care and Residential Care Facilities Sector Feedback Form ([click here](#))

Thank you to those who have responded. We read each comment thoroughly and take everything into consideration. We appreciate your time.



County of San Diego COVID-19 Diagnostic Antigen Test BinaxNOW Distribution Program

Access to the **Abbott BinaxNOW POC antigen tests** is being coordinated by the federal government and State through our local Medical Health Operational Area Coordinator local program within the County. Kits are available in San Diego County for approved health care partners. These point-of-care (POC) antigen diagnostic tests detect the presence of the SARS-CoV-2 virus and can provide results in less than 20 minutes. Antigen tests have been added to the COVID-19 testing arena to meet the growing demand.

If you are interested in receiving these test kits, note a few of the **following requirements** which are listed in the attachment in further detail:

- Obtain (and attach) a Clinical Laboratory Improvement Amendments (CLIA) waiver
- Read and acknowledge responsibilities in the attached BinaxNOW Distribution Program
- Allow for a minimum of 48 hours for process and 2-3 days for delivery

Please email moc.logs.hhsa@sdcountry.ca.gov for more information.



Upcoming Telebriefings



Telebriefing for the **Long-Term Care and Residential Care Facilities Sector**

WHEN: Telebriefings will be held the 2nd and 4th Thursdays of the month from 2:00 – 3:00 PM.

**Thursday,
March 11
at 2:00 PM**

[Zoom Meeting Link](#)

[Submit Telebriefing Questions](#)

Visit the **Long-Term Care and Residential Care Facilities** sector [webpage](#)



Telebriefing for the **Older Adult and Disability Sector**

WHEN: Telebriefings will be held on the 3rd Friday of the month from 3:00 – 4:00 PM.

Friday,
March 19
at 3:00 PM

Zoom Meeting Link

Submit Telebriefing
Questions

Visit the **Older Adult and Disability Sector** sector [webpage](#).



Ongoing Programs, Services, and Resources



County of San Diego Coronavirus Disease 2019

For up-to-date local information on COVID-19 within the County of San Diego, visit

www.coronavirus-sd.com



COVID-19 Testing Information & Resources

For testing locations or to make an appointment at a drive-up location, visit the

[Testing in San Diego County webpage](#).



CDC Infection Control Resources

CDC Guidance and Resources for Infection Control in Facilities

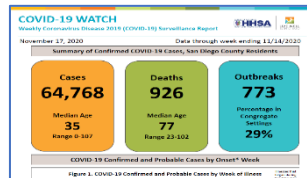
[CLICK HERE](#)



Case Rates by Zip Code

To view an interactive COVID-19 case rates by ZIP code map,

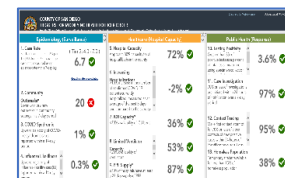
[CLICK HERE](#)



COVID-19 Watch Surveillance Report

County of San Diego COVID-19 Dashboard and Weekly Report

[CLICK HERE](#)



Triggers Dashboard: Testing Positivity Rate

The frequency of routine testing of skilled nursing facility staff depends on the San Diego County Positivity Rate.

[View the current Positivity Rate here](#) (Item #10: Testing Positivity)



2-1-1 San Diego

For general health questions about COVID-19, community



Live Well @ Home



Questions?

resources, or if you are uninsured, dial **2-1-1**

[2-1-1 San Diego](#)

Interested in free resources, tips, and strategies to stay healthy in both mind and body while staying at home?

[CLICK HERE](#)

For questions related to long-term care and residential care facilities, please email:

COVID-LTC@sdcounty.ca.gov



Stay Connected



For questions related to long-term care and residential care facilities, please email: COVID-LTC@sdcounty.ca.gov.

Visit the Long-Term Care and Residential Care Facilities sector support [webpage](#)



Text **COSD COVID-19** to **468-311** to get text alert updates from the County of San Diego.

