



CORONAVIRUS
DISEASE 2019 (COVID-19)

WEEKLY UPDATE LONG-TERM CARE AND RESIDENTIAL CARE FACILITIES

Friday, April 9, 2021

Greetings Long-Term Care and Residential Care Facilities of San Diego County,

Our County Healthcare Status Provider Taskforce will be emailing a questionnaire on Monday, April 12, to long-term care facilities to assess vaccination needs. If you are having challenges securing an on-site vaccination for a new admit or need a second dosing for a non-ambulatory resident, please let us know in that questionnaire. If you do not receive that email and are receiving this weekly update, please contact us at COVID-LTC@sdcounty.ca.gov.

If one of your fully vaccinated staff or residents are asymptomatic and test positive, please isolate the individual and contact County Epidemiology at 619-692-8499 for further assessment. There are many factors to be considered, including asymptomatic infection, circulating SARS-CoV-2 variants, and vaccine breakthrough. You may consider repeating the COVID test using a molecular (e.g. PCR) method to aid in the assessment.

Please find information below regarding the latest guidance and resources from county, state, and federal organizations, including **new updates**:

- **PowerPoint slides** from Long-Term Care Telebriefing on 4/8/2021:
 - Dr. Sayone Thihalolipavan, County of San Diego **COVID-19 Update**
- San Diego County currently in the [Orange Tier](#), effective April 7, 2021; general population 16+ will be eligible to receive the vaccine as of April 15, 2021. For more information, please [click here](#).
- Updated County of San Diego [Public Health Order](#), effective April 7, 2021
- Updated County of San Diego [Order of the Health Officer- Quarantine of Persons Exposed to COVID-19](#), effective April 5, 2021

- New Monoclonal Antibody Regional Center (MARC) opening on April 19, 2021, at San Ysidro Health, 391 Oxford Street, Chula Vista
- **California Department of Social Services, Community Care Licensing Division:**
 - [PIN 21-04-CCLD](#) informs licensees and providers about the FEMA Funeral Assistance Program for COVID-19 funeral expenses.
- **Updated:** FEMA COVID-19 [Funeral Assistance](#) applications begin on Monday, April 12, 2021 through a dedicated call center: 844-684-6333; up to \$9,000 per funeral and a maximum of \$35,000 per application; **Fraud alert:** FEMA has not sent any notifications to people offering to register them for assistance and they do not contact people prior to them registering for assistance.
- **Reminder:** If you are experiencing vaccine hesitancy from staff or residents at your facility, we have a team comprised of doctors and nurses that are available to provide an educational session/presentation on vaccine effectiveness and confidence. If you would like to request this, please email us at COVID-LTC@sdcounty.ca.gov.

As a reminder, if you have a positive COVID-19 case at your facility, please report it by calling the County of San Diego Public Health Epidemiology Unit at (619) 692-8499 or (858) 565-5255 for after-hours or on the weekend. The County as well as your State licensing departments are here to support you.

Please email us at moc.logs.hhsa@sdcounty.ca.gov if you need personal protective equipment. For other questions, please feel free to email us at COVID-LTC@sdcounty.ca.gov or visit our webpage at www.coronavirus-sd.com/LTC.

Thank you for your continued efforts and partnership with the County of San Diego!

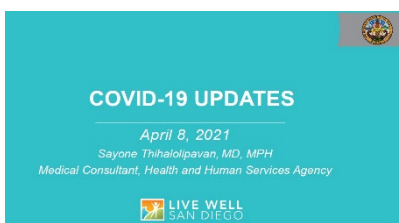


Announcements and News

PowerPoint Slides

Long-Term Care & Residential Care Facilities Telebriefing

April 8, 2021



NEW: Dr. Sayone Thihalolipavan, County of San Diego, Medical Consultant, provided a **COVID-19 Update**.

Please see attached PDF titled

“Dr Sayone_CountyCOVID19_Updates_4_8_21”



County of San Diego Public Health Orders

Updated: County of San Diego [Public Health Order](#) (4/7/2021: Please note, section 15a (page 7), which refers to visitors and non-essential personnel, has not changed. Visitation aligns with and will defer to the most recent guidance by CDPH and CDSS.

15a: "Non-essential personnel do not include visitors to hospitals and long-term care facilities who are granted entry by the facility's director, or designee, because they are family or friends who are visiting a resident in an end of life or similar situation, are parents or guardians visiting a child who is a patient, or because of any other circumstances deemed appropriate by the facility director, or designee, and where appropriate precautions by the facility that follow federal, State, and local public health guidance regarding COVID-19 are followed."

Updated: County of San Diego [Order of the Public Health Officer - Quarantine of Persons Exposed to COVID-19](#) (4/5/2021): Please note, this guidance is for fully vaccinated and unvaccinated individuals and references healthcare workers and those in congregate settings.



California Department of Public Health

CDPH publishes news and All Facilities Letters (AFLs) regularly. If you would like to receive email notifications of AFLs, please submit your request to LNCPolicy@cdph.ca.gov.

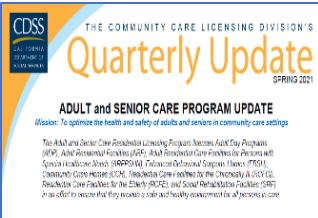
[CDPH COVID-19 Toolkit](#) serves as a one-stop-shop for partners to access materials available for download and sharing in support of outreach and education. This toolkit has numerous videos, social media messages, infographics, handouts, fact sheets, and more.

[Click here to see a full list of recent AFLs](#)



California Department of Social Services

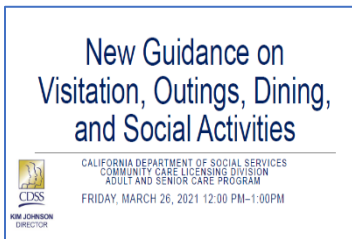
The Community Care Licensing Division (CCLD) of the California Department of Social Services (CDSS) publishes Provider Information Notices (PINs) to communicate important license related information to CCLD-licensed providers. The local San Diego Adult and Senior Care Regional Office can be reached at (619) 767-2300 or CCLASCPSanDiegoRO@dss.ca.gov.



CDSS Spring 2021 Quarterly Updates available [here](#).

NEW: [PIN 21-04-CCLD](#) (April 6, 2021) informs licensees about assistance available through the Federal Emergency Management Agency (FEMA) to assist with COVID-19 funeral expenses.

[PIN 21-19-ASC](#) (April 2, 2021) provides guidance to Adult and Senior Care Program Licensees on COVID-19 prevention and mitigation strategies for **persons in care with dementia** and **persons in care in memory care units**.



[PowerPoint Slides](#) (March 26, 2021) from the Informational Call Regarding COVID-19: New Guidance on Visitation, Outing, Dining, and Social Activities [PIN 21-18-ASC](#)

[PIN 21-17-ASC](#) (March 19, 2021) to all Adult and Senior Care Programs Residential Licensees provides updates for visitation, guidance on communal dining, group activities, non-essential services, residents returning from outings and new admissions.

[PIN 21-16-ASC](#) (March 15, 2021) to all Adult and Senior Care Programs Residential Licensees provides guidance to licensees about **antigen tests** in general, and specifically, about the Abbott BinaxNOW COVID-19 Ag Card Test Kit; includes addendums: 1) Precautions and Limitations, and 2) Fact Sheet for Persons in Care.

***Please see more information below on the San Diego County BinaxNOW Distribution Program to request kits.**

[Click here to browse the full list of recent PINs](#)



County of San Diego COVID-19 Diagnostic Antigen Test BinaxNOW Distribution Program

Reminder: Access to the **Abbott BinaxNOW POC antigen tests** is being coordinated by the federal government and State through our local Medical Health Operational Area Coordinator

local program within the County. Kits are available in San Diego County for approved health care partners. These point-of-care (POC) antigen diagnostic tests detect the presence of the SARS-CoV-2 virus and can provide results in less than 20 minutes. Antigen tests have been added to the COVID-19 testing arena to meet the growing demand.

If you are interested in receiving these test kits, note a few of the **following requirements** which are listed in the attachment in further detail:

- Obtain (and attach) a Clinical Laboratory Improvement Amendments (CLIA) waiver
- Read and acknowledge responsibilities in the attached BinaxNOW Distribution Program
- Allow for a minimum of 48 hours for process and 2-3 days for delivery

For more detailed information, please [click here](#).

Please email moc.logs.hhsa@sdcounty.ca.gov for more information.



FEMA

COVID-19 Funeral Assistance

Updated: The Federal Emergency Management Agency (FEMA) will provide financial assistance for COVID-19-related funeral expenses (up to \$9,000 per funeral and a maximum of \$35,000 per application) incurred after January 20, 2020. FEMA will begin accepting applications for Funeral Assistance on **Monday, April 12, 2021** through their dedicated call center: **844-684-6333** | TTY: **800-462-7585**

Fraud alert: FEMA has not sent any notifications to people offering to register them for assistance and they do not contact people prior to them registering for assistance.

Please see attached PDF titled "fema_policy_covid-19_funeral_assistance_updated" and FEMA's webpage [COVID-19 Funeral Assistance](#).



Early Treatment for COVID-19 is Available at the Monoclonal Antibody Regional Center (MARC)

Updated:

- Monoclonal antibodies have been shown in [clinical trials](#) to reduce COVID-19-related hospitalization and emergency room visits.
- The [Monoclonal Antibody Regional Center](#) is open to treat mild to moderate COVID-19 in adults and pediatric patients (12 years of age and older weighing at least 40 kg) with

positive results of PCR or Rapid Antigen SARS-CoV-2 testing, and who are at high risk for progressing to severer COVID-19 and/or hospitalization. Treatment should be administered as soon as possible after positive results of SARS-CoV-2 testing, and within 10 days of symptom onset.

- **Escondido Location:** Palomar Medical Center Downtown, 555 East Valley Parkway, Escondido, CA 92025; open seven days a week from 8:00 AM to 8:00 PM
- **New Site: Chula Vista Location:** Another MARC site will be opening on Monday, **April 19, 2021 at San Ysidro Health, 391 Oxford Street, Chula Vista, CA 91911** (in the former Chula Vista Fire Station #5 building); open seven days a week from 8:00 AM to 5:00 PM
- Phone number is the same for both sites: **619-685-2500**
- Treatment is available at **no-cost** to those who live or work in San Diego County, regardless of health insurance or immigration status.

For questions, please email COVIDtreatment@sdcounty.ca.gov. For additional information, please visit www.sandiegocounty.gov/COVIDHealthProfessionals.

Please click on patient flyer links for more information:

[MARC Patient Flyer \(English\)](#), [MARC Patient Flyer \(Spanish\)](#)



Centers for Disease Control and Prevention **Guidelines for Fully Vaccinated Individuals to Safely Visit with Others**

The Centers for Disease Control and Prevention guidance for vaccinated individuals and visitation – March 8, 2021. Please note, this is not intended for healthcare personnel or congregate settings. For more information, please see [CDC Issues First Set of Guidelines on How Fully Vaccinated People Can Visit Safely with Others | CDC Online Newsroom | CDC](#).

It is recommended to **follow the strictest guidance** when there is a discrepancy.

Please always consult with your local licensing staff if you have questions.



Centers for Medicare & Medicaid Services **Visitation Guidance for Skilled Nursing Facilities**

The Centers for Medicare & Medicaid Services revised Skilled Nursing Facilities visitation guidance – March 10, 2021. For details, please see [QSO-20-39-NH Revised \(cms.gov\)](#)

It is recommended to **follow the strictest guidance** when there is a discrepancy.

Please always consult with your local licensing staff if you have questions.



COVID-19 Helpful Hotlines

- **Public COVID-19 Call Center:** 1-833-422-4255, Monday-Friday 8:00 AM – 8:00 PM; Saturday and Sunday 9:00 AM – 5:00 PM, for general questions about COVID-19, including vaccines, scheduling vaccination appointments through My Turn, return to school, testing, and more.
- **My Turn Call Center:** 1-833-422-4255 for Californians to sign up for a notification when it's their turn to get a vaccine.
- **Community Care Licensing Division Helpline:** A CCLD clinician will be available Monday – Friday (excluding holidays) during business hours of 8:00 AM – 5:00 PM to answer questions related to infection prevention and control. Additionally, a voicemail system is available for leaving a message after business hours, on weekends, and on holidays. **During business hours:** 1-844-538-8766 (Press #7 when prompted); **After business hours, on weekends, and on holidays:** 1-833-498-2027



California COVID-19 Vaccination Program Update Federal Retail Pharmacy Program Activation

The Federal Retail Pharmacy Program has been activated and some pharmacy partners include **CVS, Rite Aid, Walgreens, and Albertsons**. Target population includes people 65+ and healthcare workers. Appointments will be required. Eligible Californians should not contact individual stores for appointments or come to the store seeking a vaccination without an appointment. Eligible individuals should be directed to the following scheduling links below for an appointment:

CVS: <https://www.cvs.com/immunizations/covid-19-vaccine>

Rite Aid: <https://www.riteaid.com/pharmacy/covid-qualifier>

Walgreens: <https://www.walgreens.com/topic/promotion/covid-vaccine.jsp>

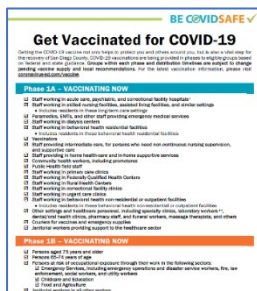
Albertsons: <https://www.albertsons.com/pharmacy/covid-19.html>

Additionally for CVS only, appointment can also be scheduled via CVS pharmacy app and eligible individuals without internet access can call **CVS at 800-746-7287** for assistance on scheduling.

For questions, please email: COVIDvaccinePharm@cdph.ca.gov



COVID-19 Vaccine Resources for Long-Term Care Facilities



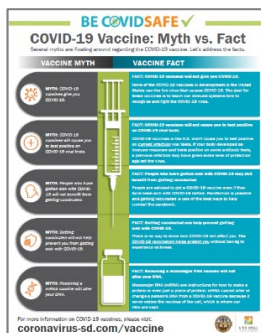
Updated: Beginning April 15, 2021, the general population 16 years of age and older will be eligible for the COVID-19 vaccination.

- [Know Your Vaccination Phase \(English\)](#)
- [Know Your Vaccination Phase \(Spanish\)](#)

Also, please continue to share the County [COVID-19 Vaccine webpage for appointments](#) with your staff and ambulatory residents.

Transportation- If you are aware of staff, ambulatory residents, and/or their family members who may need transportation to a vaccination site, the Metropolitan Transit System and North County Transit District are offering **free rides** for everyone in the region who needs a lift **to their vaccine appointment**. Ride any bus, trolley, SPRINTER or COASTER for FREE with proof of vaccine appointment. For more information, visit the [MTS webpage](#).

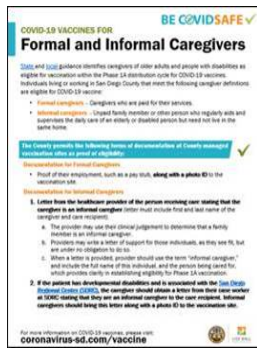
COVID-19 vaccine presentations are available through the *Live Well San Diego* [Speaker's Bureau](#) that provides free presentations delivered by volunteer medical professionals, including doctors and nurses, who are subject matter experts. Fill out an [online interest form](#) on our *Live Well San Diego* website to request a presentation.



COVID-19 Vaccine Myth vs. Fact handouts are available in English and Spanish.

Please click link below for the flyer:

[COVID-19 Vaccine – Myth vs. Fact \(English/Spanish\)](#)



Both **formal and informal caregivers** to elderly and people with disabilities are identified in the [additional Phase 1A priority groups](#) to receive the COVID-19 vaccine .

Please click links below for the flyers, including documentation needed:

[COVID-19 Vaccination for Formal and Informal Caregivers \(English\)](#)

[COVID-19 Vaccination for Formal and Informal Caregivers](#)

[\(Spanish/Español\)](#)

Reminder: Please check out the County’s webpage with COVID-19 educational materials in different languages. Please [click here](#) and scroll down the list of options in Spanish, Tagalog, Arabic, Aramaic, Chinese, Farsi, Japanese, Vietnamese, Korean, and more. The County COVID-19 [Information and Resources in Other Languages](#) webpage is a great resource.

Stay informed about COVID-19 vaccination information by bookmarking the [County COVID-19 vaccine webpage](#). Information regarding how the COVID-19 vaccine works, safety, and phases of vaccine administration, and more can be found on this webpage.

COVID-19 Vaccine Community Conversation Toolbox

The County of San Diego has created the [COVID-19 Vaccine Community Conversation Toolbox](#). This toolbox is primarily for healthcare workers (doctors and nurses who have been identified as trusted messengers of COVID-19 vaccine information) to have conversations about the COVID-19 vaccine. Fact sheets, links to important websites, handouts (English and Spanish), and Frequently Asked Questions are included.

CDC Vaccine Considerations

Please [click here](#) for some CDC vaccine considerations.

1. Both mRNA vaccines require a 2nd dose: Pfizer at 21 days and Moderna at 28 days
2. The second dose should NOT be administered any sooner than 21 days (Pfizer) or 28 days (Moderna)
3. The second dose of both mRNA vaccines may be administered up to 6 weeks after the first dose

Long-Term Care Facility Resources

Post Vaccine Considerations for Residents — While [this guidance](#) is intended for long-term care facilities, it could also be applied to patients in other healthcare settings. Considerations are based on the current understanding of signs and symptoms following COVID-19 vaccination, including timing and duration, and might change as experience with the vaccine accumulates.

Frequently Asked Questions about COVID-19 Vaccination in Long-Term Care Facilities

(LTCF) — Making sure LTCF residents can receive COVID-19 vaccination as soon as vaccine is available will help save the lives of those who are most at risk of dying from COVID-19. CDC updates [frequently asked questions](#) for Healthcare Infection Prevention and Control and Healthcare Professionals regularly based on feedback from professionals on the ground.

The [Vaccination Toolkit for Long-term Care Facilities](#) is available on CDC's website.

Importance of COVID-19 Vaccination for Residents of Long-term Care Facilities —

This guidance has been updated to include long-term care consent information for COVID-19 vaccination. To learn more visit, [Vaccinating Long-Term Care Facility Residents](#).

CDC Pharmacy Partnership for Long-Term Care Program

As you know, the Centers for Disease Control and Prevention's Pharmacy Partnership for Long-Term Care Program partners with **CVS and Walgreens pharmacies** to provide on-site no-cost COVID-19 vaccinations.

For more information, please see the Pharmacy Partnership for Long-Term Care Program for COVID-19 Vaccination [FAQs](#). If a facility would like to email CVS or Walgreens directly, please see below:

- **CVS Email:** CovidVaccineClinicsLTCF@CVSHealth.com
- **Walgreens Email:** immunizeltc@walgreens.com



Upcoming Telebriefings



Telebriefing for the **Long-Term Care and Residential Care Facilities Sector**

WHEN: Telebriefings will be held the 2nd and 4th Thursdays of the month from 2:00 – 3:00 PM.

**Thursday,
April 22
at 2:00 PM**

[Zoom Meeting Link](#)

[Submit Telebriefing Questions](#)

Visit the **Long-Term Care and Residential Care Facilities** sector [webpage](#)



Telebriefing for the **Older Adult and Disability Sector**

WHEN: Telebriefings will be held on the 3rd Friday of the month from 3:00 – 4:00 PM.

**Friday,
April 16
at 3:00 PM**

[Zoom Meeting Link](#)

[Submit Telebriefing Questions](#)

Visit the **Older Adult and Disability Sector** [webpage](#).



Ongoing Programs, Services, and Resources



County of San Diego Coronavirus Disease 2019

For up-to-date local information on COVID-19 within the County of San Diego, visit

www.coronavirus-sd.com



COVID-19 Testing Information & Resources

For testing locations or to make an appointment at a drive-up location, visit the

[Testing in San Diego County webpage](#).



CDC Infection Control Resources

CDC Guidance and Resources for Infection Control in Facilities

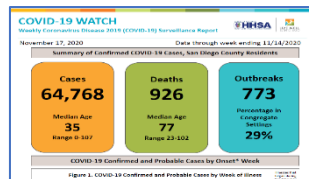
[CLICK HERE](#)



Case Rates by Zip Code

To view an interactive COVID-19 case rates by ZIP code map,

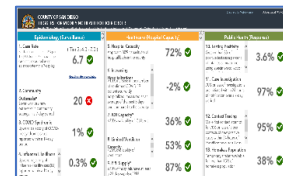
[CLICK HERE](#)



COVID-19 Watch Surveillance Report

County of San Diego COVID-19 Dashboard and Weekly Report

[CLICK HERE](#)



Triggers Dashboard: Testing Positivity Rate

The frequency of routine testing of skilled nursing facility staff depends on the San Diego County Positivity Rate.

[View the current Positivity Rate here](#) (Item #10: Testing Positivity)



2-1-1 San Diego

For general health questions about COVID-19, community resources, or if you are uninsured, dial **2-1-1**

[2-1-1 San Diego](#)

Live Well @ Home

Interested in free resources, tips, and strategies to stay healthy in both mind and body while staying at home?

[CLICK HERE](#)

Questions?

For questions related to long-term care and residential care facilities, please email:

COVID-LTC@sdcounty.ca.gov



Stay Connected



For questions related to long-term care and residential care facilities, please email: COVID-LTC@sdcounty.ca.gov.

Visit the Long-Term Care and Residential Care Facilities sector support [webpage](#)



Text **COSD COVID-19** to **468-311** to get text alert updates from the County of San Diego.

