



CORONAVIRUS
DISEASE 2019 (COVID-19)

WEEKLY UPDATE

LONG-TERM CARE AND RESIDENTIAL CARE FACILITIES

Friday, April 2, 2021

Greetings Long-Term Care and Residential Care Facilities of San Diego County,

As guidance continues to change with the evolving COVID-19 pandemic, we recognize your steadfast commitment and flexibility. Thank you for your continued efforts to keep your residents and staff safe and healthy.

Please find information below regarding the latest guidance and resources from county, state, and federal organizations, including **new updates**:

- As of April 1st, COVID-19 vaccine eligibility expanding to all individuals ages 50+. Starting April 15th all individuals age 16+ will be eligible to receive the vaccine. For more information, please [click here](#).
- **California Department of Social Services, Community Care Licensing Division:**
 - [PIN 21-19-ASC](#) provides guidance to Adult and Senior Care Program Licensees on COVID-19 prevention and mitigation for persons in care with dementia and persons in care in memory care units.
- **Update:** FEMA will begin accepting applications for COVID-19 [Funeral Assistance](#) on Monday, April 12, 2021, through a dedicated call center: 844-684-6333. **Fraud alert:** FEMA has not sent any notifications to people offering to register them for assistance and they do not contact people prior to them registering for assistance.
- Our next **telebriefing** will be held on **Thursday, April 8, 2:00 - 3:00 PM**, with a **special guest, Icela Estrada**, Regional Manager, San Diego Adult & Senior Care Regional Office, Community Care Licensing Division, California Department of Social Service to discuss PIN 21-17-ACS.

- **Reminder:** If you are experiencing vaccine hesitancy from staff or residents at your facility, we have a team comprised of doctors and nurses that are available to provide an educational session/presentation on vaccine effectiveness and confidence. If you would like to request this, please email us at COVID-LTC@sdcounty.ca.gov.

As a reminder, if you have a positive COVID-19 case at your facility, please report it by calling the County of San Diego Public Health Epidemiology Unit at (619) 692-8499 or (858) 565-5255 for after-hours or on the weekend. The County as well as your State licensing departments are here to support you.

Please email us at moc.logs.hhsa@sdcounty.ca.gov if you need personal protective equipment. For other questions, please feel free to email us at COVID-LTC@sdcounty.ca.gov or visit our webpage at www.coronavirus-sd.com/LTC.

Thank you for your continued efforts and partnership with the County of San Diego!



Announcements and News



California Department of Public Health

CDPH publishes news and All Facilities Letters (AFLs) regularly. If you would like to receive email notifications of AFLs, please submit your request to LNCPolicy@cdph.ca.gov.

[AFL 21-08.2](#) to General Acute Care Hospitals, Acute Psychiatric Hospitals, Skilled Nursing Facilities – March 23, 2021

Provides health care facilities with updated guidance on exposure risk assessment and the duration of quarantine for SARS-CoV-2 exposed health care personnel working in hospitals, SNFs, and SNF residents. This revision includes updated risk and quarantine guidance from the CDC for health care personnel working in hospitals and SNFs and SNF residents who have been fully vaccinated against SARS-CoV-2.

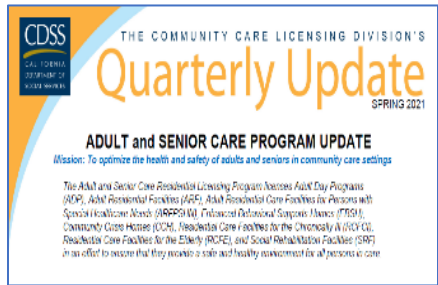
[CDPH COVID-19 Toolkit](#) serves as a one-stop-shop for partners to access materials available for download and sharing in support of outreach and education. This toolkit has numerous videos, social media messages, infographics, handouts, fact sheets, and more.

[Click here to see a full list of recent AFLs](#)



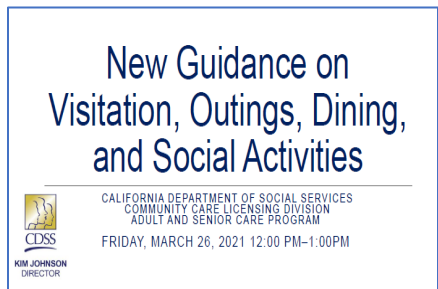
California Department of Social Services

The Community Care Licensing Division (CCLD) of the California Department of Social Services (CDSS) publishes Provider Information Notices (PINs) to communicate important license related information to CCLD-licensed providers. The local San Diego Adult and Senior Care Regional Office can be reached at (619) 767-2300 or CCLASCPSanDiegoRO@dss.ca.gov.



CDSS **Spring 2021 Quarterly Updates** is available on their website [here](#).

New: [PIN 21-19-ASC](#) provides guidance to Adult and Senior Care Program Licensees on COVID-19 prevention and mitigation strategies for **persons in care with dementia** and **persons in care in memory care units**.



[PowerPoint Slides](#) (March 26, 2021) from the Informational Call Regarding COVID-19: New Guidance on Visitation, Outing, Dining, and Social Activities, held Friday, March 26, 2021, 12:00 PM – 1:00 PM [PIN 21-18-ASC](#)

[PIN 21-17-ASC](#) (March 19, 2021) to all Adult and Senior Care Programs Residential Licensees provides updates for visitation, guidance on communal dining, group activities, non-essential services, residents returning from outings and new admissions.

[PIN 21-16-ASC](#) (March 15, 2021) to all Adult and Senior Care Programs Residential Licensees provides guidance to licensees about **antigen tests** in general, and specifically, about the Abbott BinaxNOW COVID-19 Ag Card Test Kit; includes addendums: 1) Precautions and Limitations, and 2) Fact Sheet for Persons in Care.

***Please see more information below on the San Diego County BinaxNOW Distribution Program to request kits.**

[Click here to browse the full list of recent PINs](#)



County of San Diego COVID-19 Diagnostic Antigen Test BinaxNOW Distribution Program

Reminder: Access to the **Abbott BinaxNOW POC antigen tests** is being coordinated by the federal government and State through our local Medical Health Operational Area Coordinator local program within the County. Kits are available in San Diego County for approved health care partners. These point-of-care (POC) antigen diagnostic tests detect the presence of the SARS-CoV-2 virus and can provide results in less than 20 minutes. Antigen tests have been added to the COVID-19 testing arena to meet the growing demand.

If you are interested in receiving these test kits, note a few of the **following requirements** which are listed in the attachment in further detail:

- Obtain (and attach) a Clinical Laboratory Improvement Amendments (CLIA) waiver
- Read and acknowledge responsibilities in the attached BinaxNOW Distribution Program
- Allow for a minimum of 48 hours for process and 2-3 days for delivery

For more detailed information, please [click here](#).

Please email moc.logs.hhsa@sdcounty.ca.gov for more information.



FEMA

COVID-19 Funeral Assistance

Update: The COVID-19 pandemic has brought overwhelming grief to many families. The Federal Emergency Management Agency (FEMA) will provide financial assistance for COVID-19-related funeral expenses incurred after January 20, 2020. FEMA will begin accepting applications for Funeral Assistance on **Monday, April 12, 2021** through their call center: **844-684-6333** | TTY: **800-462-7585**.

More information will be available on their webpage soon: [COVID-19 Funeral Assistance](#)



**Early Treatment for COVID-19 is Available at the
Monoclonal Antibody Regional Center (MARC)**

Reminder:

- Monoclonal antibodies have been shown in [clinical trials](#) to reduce COVID-19-related hospitalization and emergency room visits.
- The [Monoclonal Antibody Regional Center](#) is open to treat mild to moderate COVID-19 in adults and pediatric patients (12 years of age and older weighing at least 40 kg) with positive results of PCR or Rapid Antigen SARS-CoV-2 testing, and who are at high risk for progressing to severer COVID-19 and/or hospitalization. Treatment should be administered as soon as possible after positive results of SARS-CoV-2 testing, and within 10 days of symptom onset.
- The MARC is open 7 days a week from 8:00 AM to 8:00 PM at the Palomar Medical Center Downtown ([555 East Valley Parkway, Escondido, CA 92025](#)).
- Another MARC location in the South Region is in the final stages of development. Stay tuned!
- Treatment is available at **no-cost** to those who live or work in San Diego County, regardless of health insurance or immigration status.
- Patients 65 years of age or older do not require a referral and may call **(619) 685-2500** with questions and/or to schedule an appointment for COVID-19 monoclonal antibody treatment.
- Patients younger than 65 years old, talk to your doctor to see if you are medically eligible for this treatment and to receive a referral.

For questions, please email COVIDtreatment@sdcounty.ca.gov. For additional information, please visit www.sandiegocounty.gov/COVIDHealthProfessionals.

Please click on patient flyer links for more information:

[MARC Patient Flyer \(English\)](#), [MARC Patient Flyer \(Spanish\)](#)



California Health Alert Network San Diego Health Advisory Update

Health Advisory Update #28: Coronavirus Disease 2019 (COVID-19) Vaccine Update – March 16, 2021

Key Messages:

- The Janssen (Johnson & Johnson) vaccine has received an Emergency Use Authorization (EUA) and interim recommendations for use in the United States have been made.

- Providers should monitor the Centers for Disease Control and Prevention’s Clinical Considerations webpage for frequently updated guidance on COVID-19 vaccination.
- The California Department of Public Health (CDPH) has authorized as eligible for vaccination individuals age 16-64 at the highest risk for morbidity and mortality from COVID-19 as a direct result of severe health conditions.
- CDPH provided updates and additional clarifications to groups eligible for vaccination.

For more information on the Janssen COVID-19 vaccine, vaccination guidance, recommendations for fully vaccinated people, vaccine allocation updates, and actions requested please see the **attached PDF** titled “CAHAN_SD_03_16_2021”



Centers for Disease Control and Prevention Guidelines for Fully Vaccinated Individuals to Safely Visit with Others

The Centers for Disease Control and Prevention guidance for vaccinated individuals and visitation – March 8, 2021. Please note, this is not intended for healthcare personnel or congregate settings. For more information, please see [CDC Issues First Set of Guidelines on How Fully Vaccinated People Can Visit Safely with Others | CDC Online Newsroom | CDC.](#)

It is recommended to **follow the strictest guidance** when there is a discrepancy. Please always consult with your local licensing staff if you have questions.



Centers for Medicare & Medicaid Services Visitation Guidance for Skilled Nursing Facilities

The Centers for Medicare & Medicaid Services revised Skilled Nursing Facilities visitation guidance – March 10, 2021. For details, please see [QSO-20-39-NH Revised \(cms.gov\)](#)

It is recommended to **follow the strictest guidance** when there is a discrepancy. Please always consult with your local licensing staff if you have questions.



COVID-19 Helpful Hotlines

- **Public COVID-19 Call Center:** 1-833-422-4255, Monday-Friday 8:00 AM – 8:00 PM; Saturday and Sunday 9:00 AM – 5:00 PM, for general questions about COVID-19, including vaccines, scheduling vaccination appointments through My Turn, return to school, testing, and more.
- **My Turn Call Center:** 1-833-422-4255 for Californians to sign up for a notification when it's their turn to get a vaccine.
- **Community Care Licensing Division Helpline:** A CCLD clinician will be available Monday – Friday (excluding holidays) during business hours of 8:00 AM – 5:00 PM to answer questions related to infection prevention and control. Additionally, a voicemail system is available for leaving a message after business hours, on weekends, and on holidays. **During business hours:** 1-844-538-8766 (Press #7 when prompted); **After business hours, on weekends, and on holidays:** 1-833-498-2027



Updated Public Health Order

San Diego County Public Health Order (2/6/2021) Click [here](#).

Order of the Public Health Officer (2/12/2021):

- **Quarantine** guidance has been updated (page 2, number 2) Click [here](#).



California COVID-19 Vaccination Program Update Federal Retail Pharmacy Program Activation

The Federal Retail Pharmacy Program has been activated and some pharmacy partners include **CVS, Rite Aid, Walgreens, and Albertsons**. Target population includes people 65+ and healthcare workers. Appointments will be required. Eligible Californians should not contact individual stores for appointments or come to the store seeking a vaccination without an appointment. Eligible individuals should be directed to the following scheduling links below for an appointment:

CVS: <https://www.cvs.com/immunizations/covid-19-vaccine>

Rite Aid: <https://www.riteaid.com/pharmacy/covid-qualifier>

Walgreens: <https://www.walgreens.com/topic/promotion/covid-vaccine.jsp>

Albertsons: <https://www.albertsons.com/pharmacy/covid-19.html>

Additionally for CVS only, appointment can also be scheduled via CVS pharmacy app and eligible individuals without internet access can call **CVS at 800-746-7287** for assistance on scheduling.

For questions, please email: COVIDvaccinePharm@cdph.ca.gov



COVID-19 Vaccine Resources for Long-Term Care Facilities

BE COVIDSAFE ✓

Get Vaccinated for COVID-19

Getting the COVID-19 vaccine not only helps to protect you and others around you, but is also a vital step for the recovery of San Diego County. COVID-19 vaccinations are being provided in phases to eligible groups based on federal and state guidance. Groups within each phase and distribution timelines are subject to change pending vaccine supply and local recommendations. For the latest vaccination information, please visit coronavirus.cdph.ca.gov/locate

Phase 1A - VACCINATING NOW

- Staff working in acute care, psychiatric, and correctional health facilities
- Staff working in skilled nursing facilities, assisted living facilities, and similar settings
 - Inclusive residents in those facilities who are eligible
- Paramedics, EMTs, and other staff providing emergency medical services
- Staff working in dialysis centers
- Staff working in behavioral health residential facilities
- Inclusive residents in those behavioral health residential facilities

Vaccinators

- Staff providing intermediate care, for persons who need non-continuous nursing supervision, and supportive care
- Staff providing in-home health care and in-home supportive services
- Community health workers, including promotoras
- Public Health Field staff
- Staff working in primary care clinics
- Staff working in Federally Qualified Health Centers
- Staff working in correctional facility clinics
- Staff working in support care clinics

Staff working in behavioral health non-residential or outpatient facilities

- Inclusive residents in those behavioral health non-residential or outpatient facilities

Other settings and healthcare personnel, including specialty clinics, laboratory workers, dental/oral health clinics, pharmacy staff, and forensic workers, massage therapists, and others

- Clinical for vaccines and emergency response
- Janitorial workers providing support to the healthcare sector

Phase 1B - VACCINATING NOW

- Persons aged 75 years and older
- Persons 65+ years of age
- Persons at risk of displacement through their work in the following sectors:
 - Emergency Services, including emergency operations and disaster service workers, fire, law enforcement, social services, and utility workers
 - Childcare and Education
 - Food and Agriculture
 - Healthcare workers in all other sectors

People who live and work in San Diego County AND in [Phase 1](#) or [Phase 2](#) are currently eligible for the COVID-19 vaccine. For printable flyers, please see below:

- [Know Your Vaccination Phase \(English\)](#)
- [Know Your Vaccination Phase \(Spanish\)](#)

Also, please continue to share the County [COVID-19 Vaccine webpage for appointments](#) with your staff and ambulatory residents.

Transportation- If you are aware of staff, ambulatory residents, and/or their family members who may need transportation to a vaccination site, the Metropolitan Transit System and North County Transit District are offering **free rides** for everyone in the region who needs a lift **to their vaccine appointment**. Ride any bus, trolley, SPRINTER or COASTER for FREE with proof of vaccine appointment. For more information, visit the [MTS webpage](#).

COVID-19 vaccine presentations are available through the *Live Well San Diego* [Speaker's Bureau](#) that provides free presentations delivered by volunteer medical professionals, including doctors and nurses, who are subject matter experts. Fill out an [online interest form](#) on our *Live Well San Diego* website to request a presentation.

BE COVIDSAFE ✓

COVID-19 Vaccine: Myth vs. Fact

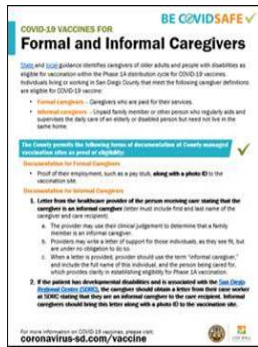
Learn common COVID-19 vaccine myths and facts. Visit coronavirus-sd.com/vaccine

VACCINE MYTH	VACCINE FACT
MYTH: COVID-19 vaccine will change your DNA.	COVID-19 vaccines are made from genetic material that cannot be passed on to others. The genetic material in the vaccine is broken down and cannot be used to make new viruses.
MYTH: COVID-19 vaccine will make you sick.	COVID-19 vaccines are made from genetic material that cannot be passed on to others. The genetic material in the vaccine is broken down and cannot be used to make new viruses.
MYTH: COVID-19 vaccine will give you COVID-19.	COVID-19 vaccines are made from genetic material that cannot be passed on to others. The genetic material in the vaccine is broken down and cannot be used to make new viruses.
MYTH: COVID-19 vaccine will give you COVID-19.	COVID-19 vaccines are made from genetic material that cannot be passed on to others. The genetic material in the vaccine is broken down and cannot be used to make new viruses.
MYTH: COVID-19 vaccine will give you COVID-19.	COVID-19 vaccines are made from genetic material that cannot be passed on to others. The genetic material in the vaccine is broken down and cannot be used to make new viruses.
MYTH: COVID-19 vaccine will give you COVID-19.	COVID-19 vaccines are made from genetic material that cannot be passed on to others. The genetic material in the vaccine is broken down and cannot be used to make new viruses.

COVID-19 Vaccine Myth vs. Fact handouts are available in English and Spanish.

Please click link below for the flyer:

[COVID-19 Vaccine – Myth vs. Fact \(English/Spanish\)](#)



Both **formal and informal caregivers** to elderly and people with disabilities are identified in the [additional Phase 1A priority groups](#) to receive the COVID-19 vaccine .

Please click links below for the flyers, including documentation needed:

[COVID-19 Vaccination for Formal and Informal Caregivers \(English\)](#)

[COVID-19 Vaccination for Formal and Informal Caregivers](#)

[\(Spanish/Español\)](#)

Reminder: Please check out the County's webpage with COVID-19 educational materials in different languages. Please [click here](#) and scroll down the list of options in Spanish, Tagalog, Arabic, Aramaic, Chinese, Farsi, Japanese, Vietnamese, Korean, and more. The County COVID-19 [Information and Resources in Other Languages](#) webpage is a great resource.

Stay informed about COVID-19 vaccination information by bookmarking the [County COVID-19 vaccine webpage](#). Information regarding how the COVID-19 vaccine works, safety, and phases of vaccine administration, and more can be found on this webpage.

COVID-19 Vaccine Community Conversation Toolbox

The County of San Diego has created the [COVID-19 Vaccine Community Conversation Toolbox](#). This toolbox is primarily for healthcare workers (doctors and nurses who have been identified as trusted messengers of COVID-19 vaccine information) to have conversations about the COVID-19 vaccine. Fact sheets, links to important websites, handouts (English and Spanish), and Frequently Asked Questions are included.

CDC Vaccine Considerations

Please [click here](#) for some CDC vaccine considerations.

1. Both mRNA vaccines require a 2nd dose: Pfizer at 21 days and Moderna at 28 days
2. The second dose should NOT be administered any sooner than 21 days (Pfizer) or 28 days (Moderna)
3. The second dose of both mRNA vaccines may be administered up to 6 weeks after the first dose

Long-Term Care Facility Resources

Post Vaccine Considerations for Residents — While [this guidance](#) is intended for long-term care facilities, it could also be applied to patients in other healthcare settings. Considerations are based on the current understanding of signs and symptoms following COVID-19 vaccination, including timing and duration, and might change as experience with the vaccine accumulates.

Frequently Asked Questions about COVID-19 Vaccination in Long-Term Care Facilities

(LTCF) — Making sure LTCF residents can receive COVID-19 vaccination as soon as vaccine is available will help save the lives of those who are most at risk of dying from COVID-19. CDC updates [frequently asked questions](#) for Healthcare Infection Prevention and Control and Healthcare Professionals regularly based on feedback from professionals on the ground.

The [Vaccination Toolkit for Long-term Care Facilities](#) is available on CDC's website.

Importance of COVID-19 Vaccination for Residents of Long-term Care Facilities —

This guidance has been updated to include long-term care consent information for COVID-19 vaccination. To learn more visit, [Vaccinating Long-Term Care Facility Residents](#).

CDC Pharmacy Partnership for Long-Term Care Program

As you know, the Centers for Disease Control and Prevention's Pharmacy Partnership for Long-Term Care Program partners with **CVS and Walgreens pharmacies** to provide on-site no-cost COVID-19 vaccinations.

For more information, please see the Pharmacy Partnership for Long-Term Care Program for COVID-19 Vaccination [FAQs](#). If a facility would like to email CVS or Walgreens directly, please see below:

- **CVS Email:** CovidVaccineClinicsLTCF@CVSHealth.com
- **Walgreens Email:** immunizeltc@walgreens.com



Upcoming Telebriefings



Telebriefing for the **Long-Term Care and Residential Care Facilities Sector**

WHEN: Telebriefings will be held the 2nd and 4th Thursdays of the month from 2:00 – 3:00 PM.

**Thursday,
April 8
at 2:00 PM**

[Zoom Meeting Link](#)

[Submit Telebriefing Questions](#)

Visit the **Long-Term Care and Residential Care Facilities** sector [webpage](#)



Telebriefing for the **Older Adult and Disability Sector**

WHEN: Telebriefings will be held on the 3rd Friday of the month from 3:00 – 4:00 PM.

**Friday,
April 16
at 3:00 PM**

[Zoom Meeting Link](#)

[Submit Telebriefing Questions](#)

Visit the **Older Adult and Disability Sector** [webpage](#).



Ongoing Programs, Services, and Resources



County of San Diego Coronavirus Disease 2019

For up-to-date local information on COVID-19 within the County of San Diego, visit www.coronavirus-sd.com



COVID-19 Testing Information & Resources

For testing locations or to make an appointment at a drive-up location, visit the [Testing in San Diego County webpage](#).



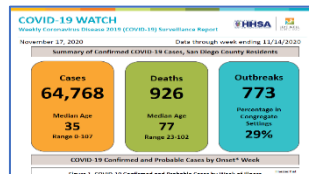
CDC Infection Control Resources

CDC Guidance and Resources for Infection Control in Facilities
[CLICK HERE](#)



Case Rates by Zip Code

To view an interactive COVID-19 case rates by ZIP code map, [CLICK HERE](#)



COVID-19 Watch Surveillance Report

County of San Diego COVID-19 Dashboard and Weekly Report
[CLICK HERE](#)



Triggers Dashboard: Testing Positivity Rate

The frequency of routine testing of skilled nursing facility staff depends on the San Diego County Positivity Rate.
[View the current Positivity Rate here](#) (Item #10: Testing Positivity)



2-1-1 San Diego

For general health questions about COVID-19, community resources, or if you are uninsured, dial **2-1-1**

[2-1-1 San Diego](#)



Live Well @ Home

Interested in free resources, tips, and strategies to stay healthy in both mind and body while staying at home?

[CLICK HERE](#)



Questions?

For questions related to long-term care and residential care facilities, please email:

COVID-LTC@sdcounty.ca.gov



Stay Connected



For questions related to long-term care and residential care facilities, please email: COVID-LTC@sdcounty.ca.gov.

Visit the Long-Term Care and Residential Care Facilities sector support [webpage](#)



Text **COSD COVID-19** to **468-311** to get text alert updates from the County of San Diego.

