



CORONAVIRUS
DISEASE 2019

(COVID-19)

WEEKLY UPDATE

LONG-TERM CARE AND RESIDENTIAL CARE FACILITIES

Friday, April 30, 2021

Greetings Long-Term Care and Residential Care Facilities of San Diego County,

Please find information below regarding the latest guidance and resources from county, state, and federal organizations, including **new updates**:

- **Telebriefing date changes in May:** our Long-Term Care Sector telebriefings in May will be held on **Thursday, May 6, and Thursday, May 20, 2:00 – 3:00 PM** (1st and 3rd Thursday of the month for May only; usually held on the 2nd and 4th Thursdays). Thank you for your flexibility in this reschedule.
- **Revised: The Centers for Medicare & Medicaid Services** revised Skilled Nursing Facilities visitation guidance (April 27, 2021). For details, please see [QSO-20-39-NH Revised \(cms.gov\)](#)
- **CDC Guidance for Post-Acute Care Facilities, including Skilled Nursing Facilities: Updated Healthcare Infection Prevention and Control Recommendations in Response to COVID-19 Vaccination** (April 27, 2021). See guidance [here](#).
- **CAHAN, San Diego Health Advisory Update #32: COVID-19 Vaccine Update** (April 26, 2021) regarding resuming vaccination with Johnson & Johnson (Janssen) COVID-19 vaccine with informed consent of benefits and risks.
- **California Department of Public Health All Facilities Letters (AFL):**
 - [AFL 21-13](#) informs Skilled Nursing Facilities that the California Governor's Office of Emergency Services will be distributing PPE push packs to SNFs beginning May 3, 2021.
-

- **California Department of Social Services, Community Care Licensing Division Provider Information Notices (PINs):**
 - [PIN 21-24-ASC](#) announces an upcoming **Informational Call** via Zoom regarding “**COVID-19 Inspections: The New Infection Control Domain**”, Wednesday, May 5, 2021, 1:00 – 2:30 PM.
 - [PIN 21-17.1-ASC](#) supersedes PIN 21-17-ACS and is regarding COVID-19 visitation, communal dining, group activities, non-essential services, outings, new admissions, and entertainment. **Please note*, this PIN will be reviewed during the Informational Call mentioned above on May 5, 1:00 – 2:30 PM.
- Reminder: Long-Term Care Pharmacies Participating in the **Federal Retail Pharmacy Program** (please find a complete list [here](#)).
- All County COVID-19 Vaccine Sites **Now Accepting Walk-Up Vaccinations (No Appointment Required)**. To learn more, click [here](#).
- **Reminder:** If you are experiencing vaccine hesitancy from staff or residents at your facility, we have a team comprised of doctors and nurses who are available to provide an educational session/presentation on vaccine effectiveness and confidence. If you would like to request this, please email us at COVID-LTC@sdcounty.ca.gov.

As a reminder, if you have a positive COVID-19 case at your facility, please report it by calling the County of San Diego Public Health Epidemiology Unit at (619) 692-8499 or (858) 565-5255 for after-hours or on the weekend. The County as well as your State licensing departments are here to support you.

Please email us at moc.logs.hhsa@sdcounty.ca.gov if you need personal protective equipment. For other questions, please feel free to email us at COVID-LTC@sdcounty.ca.gov or visit our webpage at www.coronavirus-sd.com/LTC.

Thank you for your continued efforts and partnership with the County of San Diego!



Upcoming Telebriefings



**Thursday,
May 6**

Telebriefing for the **Long-Term Care and Residential Care Facilities Sector**

WHEN: In May, our telebriefings will be held on **Thursday, May 6, and Thursday, May 20**, 2:00 – 3:00 PM (1st and 3rd Thursday of the month for May only; usually held on the 2nd and 4th Thursdays).

[Zoom Meeting Link](#)

[Submit Telebriefing Questions](#)

at 2:00 PM

Visit the **Long-Term Care and Residential Care Facilities** sector [webpage](#)



Telebriefing for the **Older Adult and Disability Sector**

WHEN: Telebriefings will be held on the 3rd Friday of the month from 3:00 – 4:00 PM.

Friday,
May 21

[Zoom Meeting Link](#)

[Submit Telebriefing Questions](#)

at 3:00 PM

Visit the **Older Adult and Disability Sector** [webpage](#).



Announcements and News



Centers for Medicare & Medicaid Services

Visitation Guidance for Skilled Nursing Facilities

Revised: The Centers for Medicare & Medicaid Services revised Skilled Nursing Facilities visitation guidance – April 27, 2021. For details, please see [QSO-20-39-NH Revised \(cms.gov\)](#)

It is recommended to **follow the strictest guidance** when there is a discrepancy.

Please always consult with your local licensing staff if you have questions.



California Health Alert Network San Diego Health Advisory Updates

NEW: Health Advisory Update #32: Coronavirus Disease 2019 (COVID-19) Update – April 26, 2021

Key Messages:

- Resume vaccination with Johnson & Johnson (Janssen) COVID-19 vaccine with informed consent on benefits and risks of this product.
- [Janssen Vaccination Fact Sheet](#) (CHPH version [here](#)).

For more information regarding the situation and actions requested, please see the **attached PDF** titled “CAHAN+COVID-19+Vaccine+Update+4-26-21”



California Department of Public Health

CDPH publishes news and All Facilities Letters (AFLs) regularly. If you would like to receive email notifications of AFLs, please submit your request to LNCPolicy@cdph.ca.gov.

New: [AFL 21-13](#) to Skilled Nursing Facilities– April 30, 2021

Informs SNFs that the California Governor's Office of Emergency Services will be distributing PPE push packs to SNFs beginning May 3, 2021. The quantities for each PPE push pack will be based on the facility's total number of beds and will include the following: Build Your Dreams (BYD) procedure/surgical masks, BYD N95 masks, hand sanitizer, goggles, gowns, nitrile gloves, disinfecting wipes.

[AFL 20-22.7](#) to Long-Term Care Facilities– April 16, 2021

Notifies long-term care facilities of the CMS and CDC guidance for improving their infection control and prevention practices to prevent the transmission of COVID-19, including guidance for visitation; authorizes LTC facilities to temporarily modify their facility's visitation policies in accordance with CMS and CDC COVID-19 guidance when necessary to protect the health and safety of residents, staff and the public; provides CDPH's visitation guidance for expanded opportunities for indoor in-room visitation and physical touch and infection control measures for fully vaccinated residents and visitors; includes additional guidelines for pediatric residents.

[CDPH COVID-19 Toolkit](#) serves as a one-stop-shop for partners to access materials available for download and sharing in support of outreach and education. This toolkit has numerous videos, social media messages, infographics, handouts, fact sheets, and more.

[Click here to see a full list of recent AFLs](#)



California Department of Social Services

The Community Care Licensing Division (CCLD) of the California Department of Social Services (CDSS) publishes Provider Information Notices (PINs) to communicate important license related information to CCLD-licensed providers. The local San Diego Adult and Senior Care Regional Office can be reached at (619) 767-2300 or CCLASCPSanDiegoRO@dss.ca.gov.

NEW: [PIN 21-24-ASC](#) (April 28, 2021) announces an upcoming informational call with Adult and Senior Care licensees and their staff:

“COVID-19 Inspections: The New Infection Control Domain”

Zoom Webinar

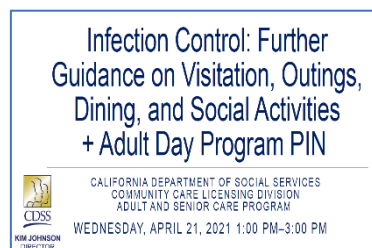
Wednesday, May 5, 2021

1:00 PM – 2:30 PM

CCLD representatives and guest panelists will describe the new facility inspection process and implementation of the new “Infection Control” domain within the Inspection Tools as they resume on-site inspections. In addition, PIN 21-17.1-ASC will be reviewed, which continues the statewide waiver related to visitation and provides specific updates related to communal dining, group activities, residents returning from outings, new admissions, and entertainment. Please see [PIN 21-24-ASC](#) for details on how to log in to participate in this important informational zoom meeting.

NEW: [PIN 21-17.1-ASC](#) (April 23, 2021) supersedes PIN 21-17-ASC dated March 19, 2021, continues the statewide waiver related to visitation, and provides specific updates related to communal dining, group activities, residents returning from outings, new admissions, and entertainment.

[PIN 21-23-ASC](#) (April 20, 2021) provides updated quarantine and isolation guidance to Adult and Senior Care licensees with facility staff who are fully vaccinated, facility staff who were exposed to a person with COVID-19, and facility staff who test positive for COVID-19. In addition, this PIN provides infection control practices for facility staff to safely commute to work.



[PowerPoint Slides](#) (April 21, 2021) from the Informational Call Regarding COVID-19 Infection Control: Further Guidance on Visitation, Outings, Dining, and Social Activities + Adult Day Program [PIN 21-22-ASC](#)

[PIN 21-21-ASC](#) (April 15, 2021) addresses the Community Care Licensing Division support for Adult Day Programs to operate during the COVID-19 pandemic and provides information on COVID-19 vaccinations.

[PIN 21-20-ASC](#) (April 15, 2021) provides further information about how Adult and Senior Care residential licensees, facility staff, and residents can access the COVID-19 vaccine. Please note, now that the Pharmacy Partnership for Long-Term Care Program has concluded, the [Federal Retail Pharmacy Program for COVID-19 Vaccination](#) has been activated. This program includes 21 participating national pharmacy partners that provide COVID-19 vaccinations at retail pharmacy locations. There are also [Long-term Care Pharmacies](#) distributing the COVID-19 vaccine through this program.

[Click here to browse the full list of recent PINs](#)



County of San Diego COVID-19 Diagnostic Antigen Test BinaxNOW Distribution Program

Reminder: Access to the **Abbott BinaxNOW POC antigen tests** is being coordinated by the federal government and State through our local Medical Health Operational Area Coordinator local program within the County. Kits are available in San Diego County for approved health care partners. These point-of-care (POC) antigen diagnostic tests detect the presence of the SARS-CoV-2 virus and can provide results in less than 20 minutes. Antigen tests have been added to the COVID-19 testing arena to meet the growing demand.

If you are interested in receiving these test kits, note a few of the **following requirements** which are listed in the attachment in further detail:

- Obtain (and attach) a Clinical Laboratory Improvement Amendments (CLIA) waiver
- Read and acknowledge responsibilities in the attached BinaxNOW Distribution Program
- Allow for a minimum of 48 hours for process and 2-3 days for delivery

For more detailed information, please [click here](#).

Please email moc.logs.hhsa@sdcounty.ca.gov for more information.



FEMA

COVID-19 Funeral Assistance

The Federal Emergency Management Agency (FEMA) will provide financial assistance for COVID-19-related funeral expenses (up to \$9,000 per funeral and a maximum of \$35,000 per application) incurred after January 20, 2020. FEMA is accepting applications for Funeral Assistance through their dedicated call center: **844-684-6333** | TTY: **800-462-7585**

Fraud Alert: The Federal Trade Commission has issued a [Consumer Alert](#) including important things to know, such as FEMA will **not** contact you until you have called FEMA or have applied for assistance.

Please see FEMA's webpage [COVID-19 Funeral Assistance](#) and FEMA's [Funeral Assistance FAQs](#) for more information.



Early Treatment for COVID-19 is Available at the Monoclonal Antibody Regional Center (MARC)

- Monoclonal antibodies have been shown in [clinical trials](#) to reduce COVID-19-related hospitalization and emergency room visits.
- The [Monoclonal Antibody Regional Center](#) is open to treat mild to moderate COVID-19 in adults and pediatric patients (12 years of age and older weighing at least 40 kg) with positive results of PCR or Rapid Antigen SARS-CoV-2 testing, and who are at high risk for progressing to severer COVID-19 and/or hospitalization. Treatment should be administered as soon as possible after positive results of SARS-CoV-2 testing, and within 10 days of symptom onset.
- **Escondido Location:** Palomar Medical Center Downtown, 555 East Valley Parkway, Escondido, CA 92025; open seven days a week from 8:00 AM to 8:00 PM
- **New Site: Chula Vista Location:** Another MARC site is now open at **San Ysidro Health, 391 Oxford Street, Chula Vista, CA 91911** (in the former Chula Vista Fire Station #5 building); open seven days a week from 8:00 AM to 5:00 PM
- Phone number is the same for both sites: **619-685-2500**
- Treatment is available at **no-cost** to those who live or work in San Diego County, regardless of health insurance or immigration status.

For questions, please email COVIDtreatment@sdcounty.ca.gov. For additional information, please visit www.sandiegocounty.gov/COVIDHealthProfessionals.

Please click on patient flyer links for more information:

[MARC Patient Flyer \(English\)](#), [MARC Patient Flyer \(Spanish\)](#)



Centers for Disease Control and Prevention **Guidelines for Fully Vaccinated Individuals to Safely Visit with Others**

The Centers for Disease Control and Prevention guidance for vaccinated individuals and visitation – March 8, 2021. Please note, this is not intended for healthcare personnel or congregate settings. For more information, please see [CDC Issues First Set of Guidelines on How Fully Vaccinated People Can Visit Safely with Others | CDC Online Newsroom | CDC](#).

It is recommended to **follow the strictest guidance** when there is a discrepancy. Please always consult with your local licensing staff if you have questions.



County of San Diego Public Health Orders

Updated 4/7/21: County of San Diego [Public Health Order](#) Please note, section 15a (page 7), which refers to visitors and non-essential personnel, has not changed. Visitation aligns with and will defer to the most recent guidance by CDPH and CDSS.

County of San Diego [Order of the Public Health Officer - Quarantine of Persons Exposed to COVID-19](#) (4/5/2021): Please note, this guidance is for fully vaccinated and unvaccinated individuals and references healthcare workers and those in congregate settings.



California COVID-19 Vaccination Program Update **Federal Retail Pharmacy Program Activation**

The Federal Retail Pharmacy Program has been activated and some pharmacy partners include **CVS, Rite Aid, Walgreens, and Albertsons**. Target population includes people 65+ and healthcare workers. Appointments will be required. Eligible Californians should not contact individual stores for appointments or come to the store seeking a vaccination without an appointment. Eligible individuals should be directed to the following scheduling links below for an appointment:

CVS: <https://www.cvs.com/immunizations/covid-19-vaccine>

Rite Aid: <https://www.riteaid.com/pharmacy/covid-qualifier>

Walgreens: <https://www.walgreens.com/topic/promotion/covid-vaccine.jsp>

Albertsons: <https://www.albertsons.com/pharmacy/covid-19.html>

Additionally for CVS only, appointment can also be scheduled via CVS pharmacy app and eligible individuals without internet access can call **CVS at 800-746-7287** for assistance on scheduling.

For questions, please email: COVIDvaccinePharm@cdph.ca.gov



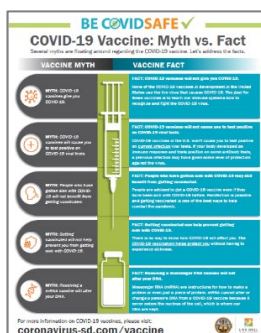
COVID-19 Vaccine Resources for Long-Term Care Facilities

Stay informed about COVID-19 vaccination information by bookmarking the [County COVID-19 vaccine webpage](#). Please continue to share the County [COVID-19 Vaccine webpage for appointments](#) with your staff and ambulatory residents.

Transportation- If you are aware of staff, ambulatory residents, and/or their family members who may need transportation to a vaccination site, the Metropolitan Transit System and North County Transit District are offering **free rides** for everyone in the region who needs a lift **to their vaccine appointment**. Ride any bus, trolley, SPRINTER or COASTER for FREE with proof of vaccine appointment. For more information, visit the [MTS webpage](#).

Appointment Ride Options for Seniors: Individuals age 65 and over are also eligible for a ride to their COVID-19 vaccination appointment. Please view the following flyer below for options available in the San Diego region: [COVID-19 Vaccinations: Appointment Ride Options for Seniors Flyer \(English\)](#)

COVID-19 vaccine presentations are available through the *Live Well San Diego* [Speaker's Bureau](#) that provides free presentations delivered by volunteer medical professionals, including doctors and nurses, who are subject matter experts. Fill out an [online interest form](#) on our *Live Well San Diego* website to request a presentation.



COVID-19 Vaccine Myth vs. Fact handouts are available in English and Spanish.

Please click link below for the flyer:

[COVID-19 Vaccine – Myth vs. Fact \(English/Spanish\)](#)

Reminder: Please check out the County's webpage with COVID-19 educational materials in different languages. Please [click here](#) and scroll down the list of options in Spanish, Tagalog, Arabic, Aramaic, Chinese, Farsi, Japanese, Vietnamese, Korean, and more. The County COVID-19 [Information and Resources in Other Languages](#) webpage is a great resource.

COVID-19 Vaccine Community Conversation Toolbox

The County of San Diego has created the [COVID-19 Vaccine Community Conversation Toolbox](#). This toolbox is primarily for healthcare workers (doctors and nurses who have been identified as trusted messengers of COVID-19 vaccine information) to have conversations about the COVID-19 vaccine. Fact sheets, links to important websites, handouts (English and Spanish), and Frequently Asked Questions are included.

CDC Vaccine Considerations

Please [click here](#) for some CDC vaccine considerations.

1. Both mRNA vaccines require a 2nd dose: Pfizer at 21 days and Moderna at 28 days
2. The second dose should NOT be administered any sooner than 21 days (Pfizer) or 28 days (Moderna)
3. The second dose of both mRNA vaccines may be administered up to 6 weeks after the first dose

Long-Term Care Facility Resources

Post Vaccine Considerations for Residents — While [this guidance](#) is intended for long-term care facilities, it could also be applied to patients in other healthcare settings. Considerations are based on the current understanding of signs and symptoms following COVID-19 vaccination, including timing and duration, and might change as experience with the vaccine accumulates.

Frequently Asked Questions about COVID-19 Vaccination in Long-Term Care Facilities (LTCF) — Making sure LTCF residents can receive COVID-19 vaccination as soon as vaccine is available will help save the lives of those who are most at risk of dying from COVID-19. CDC updates [frequently asked questions](#) for Healthcare Infection Prevention and Control and Healthcare Professionals regularly based on feedback from professionals on the ground.

The [Vaccination Toolkit for Long-term Care Facilities](#) is available on CDC's website.

Importance of COVID-19 Vaccination for Residents of Long-term Care Facilities —

This guidance has been updated to include long-term care consent information for COVID-19 vaccination. To learn more visit, [Vaccinating Long-Term Care Facility Residents](#).



COVID-19 Helpful Hotlines

- **Public COVID-19 Call Center:** 1-833-422-4255, Monday-Friday 8:00 AM – 8:00 PM; Saturday and Sunday 9:00 AM – 5:00 PM, for general questions about COVID-19, including vaccines, scheduling vaccination appointments through My Turn, return to school, testing, and more.
- **My Turn Call Center:** 1-833-422-4255 for Californians to sign up for a notification when it's their turn to get a vaccine.
- **Community Care Licensing Division Helpline:** A CCLD clinician will be available Monday – Friday (excluding holidays) during business hours of 8:00 AM – 5:00 PM to answer questions related to infection prevention and control. Additionally, a voicemail system is available for leaving a message after business hours, on weekends, and on holidays. **During business hours:** 1-844-538-8766 (Press #7 when prompted); **After business hours, on weekends, and on holidays:** 1-833-498-2027



Ongoing Programs, Services, and Resources



County of San Diego Coronavirus Disease 2019

For up-to-date local information on COVID-19 within the County of San Diego, visit www.coronavirus-sd.com



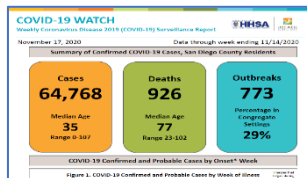
COVID-19 Testing Information & Resources

For testing locations or to make an appointment at a drive-up location, visit the [Testing in San Diego County webpage](#).



CDC Infection Control Resources

CDC Guidance and Resources for Infection Control in Facilities
[CLICK HERE](#)



Case Rates by Zip Code

To view an interactive COVID-19 case rates by ZIP code map, [CLICK HERE](#)

COVID-19 Watch Surveillance Report

County of San Diego COVID-19 Dashboard and Weekly Report [CLICK HERE](#)

Triggers Dashboard: Testing Positivity Rate

The frequency of routine testing of skilled nursing facility staff depends on the San Diego County Positivity Rate. [View the current Positivity Rate here](#) (Item #10: Testing Positivity)



2-1-1 San Diego

For general health questions about COVID-19, community resources, or if you are uninsured, dial **2-1-1**

[2-1-1 San Diego](#)



Live Well @ Home

Interested in free resources, tips, and strategies to stay healthy in both mind and body while staying at home?

[CLICK HERE](#)



Questions?

For questions related to long-term care and residential care facilities, please email:

COVID-LTC@sdcounty.ca.gov



Stay Connected



For questions related to long-term care and residential care facilities, please email: COVID-LTC@sdcounty.ca.gov.

Visit the Long-Term Care and Residential Care Facilities sector support [webpage](#)



Text **COSD COVID-19** to **468-311** to get text alert updates from the County of San Diego.

