

*Sending on behalf of the County of San Diego,
Long-Term Care and Residential Care Facilities Sector, COVID-19 Response*



September 14, 2021

Greetings Long-Term Care and Residential Care Facilities of San Diego County,

With COVID-testing needs on the rise around the County, please be aware that Mondays are often particularly busy at [County testing sites](#). If possible, individuals needing COVID-19 testing at County sites may want to consider obtaining tests on other days to reduce wait times.

Please find information below regarding the latest guidance and resources from county, state, and federal organizations, including new updates:

- Next Telebriefing for the Long-Term Care Sector will be held Thursday, September 23, 2021, 2:00 - 3:00 PM
- Long-Term Care Telebriefing PowerPoint Slides and Recording from September 9, 2021
 - Dr. Raymond Chinn, County of San Diego, Medical Consultant, COVID-19 Update
 - Jennifer Wheeler, County of San Diego, LTC Update
- [AFL 21-08.4](#) Guidance on Quarantine for Health Care Personnel Exposed to SARS-CoV-2
- [AFL 21-34](#) COVID-19 Vaccine Requirement for Healthcare Personnel

- [AFL 20-35.5](#) Suspension of Professional Certification Requirements for Certified Nurse Assistants
- [AFL 20-40.2](#) Suspension of Specified Regulatory Requirements for Nurse Assistant Training Programs
- [AFL 20-49.3](#) Suspension of Professional Certification Requirements for Home Health Aides
- [AFL 20-57.2](#) Suspension of Professional Certification Requirements for Home Health Aide Training Programs
- [PIN 21-42-ASC](#) Informational Call on Wednesday, September 15, 1:00 - 3:00 PM regarding **COVID-19 Updates & Planning For Flu Season During The Pandemic**
- [PIN 21-18-CCLD](#) Governor's Executive Order N-12-21 Regarding Coronavirus Disease 2019 And Expiration Of Statewide Waivers In The Administrator Certification Program
- MMWR Article - Monitoring Incidence of COVID-19 Cases, Hospitalizations, and Deaths, by Vaccination Status

For other questions, email COVID-LTC@sdcounty.ca.gov or for more information for long-term care facilities visit www.coronavirus-sd.com/LTC.

Thank you for your continued efforts and partnership with the County of San Diego!

TELEBRIEFINGS



Upcoming Long-Term Care and Residential Care Facilities Sector

Our next telebriefing will be **Thursday, September 23, 2021, 2:00 - 3:00 PM.**

[Zoom Meeting Link](#)

[Submit Telebriefing Questions](#)



Long-Term Care Sector Telebriefing Slides and Recording: September 9, 2021

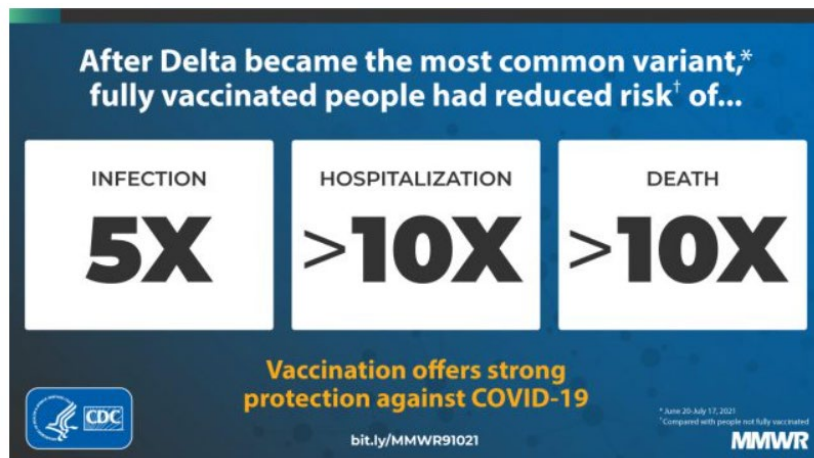
NEW: Dr. Raymond Chinn, County of San Diego Medical Consultant, [COVID-19 Update](#)

NEW: Jennifer Wheeler, County of San

Diego, [LTC Update](#)

Recording for this telebriefing is available [here](#)

ANNOUNCEMENTS AND NEWS



NEW: MMWR article published September 10, 2021 that highlights the vaccine efficacy against the delta variant. Read [Monitoring Incidence of COVID-19 Cases, Hospitalizations, and Deaths, by Vaccination Status — 13 U.S. Jurisdictions, April 4–July 17, 2021](#)



Additional Dose of COVID-19 Vaccine vs. Booster

Additional Doses Are Not Boosters. Providers should ensure that your clinic only administers additional doses of COVID-19 vaccine for immunocompromised patients and not COVID-19 vaccine booster doses at this time.

Additional Dose Recommended for Immunocompromised

- An additional mRNA COVID-19 vaccine dose is recommended for moderately to severely immunocompromised people after an initial 2-dose primary mRNA vaccine series.
- An additional doses is administered when the immune response following a primary vaccine series is likely to be insufficient.
- An additional mRNA COVID-19 dose is recommended only for patients with [moderate to severe immune compromise](#) due to a medical condition or receipt of immunosuppressive medications or treatments.

Booster Dose Not Yet Authorized or Recommended

- According to the CDC, [vaccine recipients may be eligible for a COVID-19 booster shot beginning in the fall](#), with individuals being eligible starting 8 months after they received their [second dose](#) of an mRNA vaccine (either [Pfizer-BioNTech](#) or [Moderna](#)).
- This is subject to authorization by the U.S. Food and Drug Administration and recommendation by CDC's Advisory Committee on Immunization Practices (ACIP).
- FDA is conducting an independent evaluation to determine the safety and effectiveness of a booster dose of the mRNA vaccines. ACIP will decide whether to issue a booster dose recommendation based on a thorough review of the evidence. Stay tuned for upcoming guidelines.

For more information, please visit:

- [Interim Clinical Considerations for Use of COVID-19 Vaccines](#)
- [COVID-19 Vaccine Indications for Patients Who Are Immunocompromised](#)



**California Department of Public
Health**

CDPH publishes news and All Facilities Letters (AFLs) regularly. If you would like to receive email notifications of AFLs, please submit your request

to LNCPolicy@cdph.ca.gov

NEW: [AFL 21-08.4](#) to General Acute Care Hospitals (GACHs), Acute Psychiatric Hospitals (APHs), Skilled Nursing Facilities (SNFs) - September 9, 2021

This AFL provides health care facilities with guidance on exposure risk assessment and the duration of quarantine for SARS-CoV-2 exposed HCP working in hospitals and SNFs, and SNF residents. This revision includes guidance on return to work for HCP diagnosed with COVID-19, including strategies to mitigate HCP staffing shortages.

NEW: [AFL 21-34](#) to All Facilities - September 9, 2021

This AFL notifies all facilities of the August 5, 2021 [Public Health Order](#) related to mandatory vaccination for health care workers in identified healthcare settings. This AFL requires HCP to receive COVID-19 vaccination. HCP must ensure they have received either the first dose of a one-dose regimen or their second dose of a two-dose regimen no later than September 30, 2021, unless exempt. Facilities must document HCP COVID-19 vaccination or exemption status by September 30, 2021 to be in full compliance. A [template form](#) containing sample language for documenting vaccine declination under this Order due to medical reasons by your employees is available for your use. There is no requirement to obtain a religious statement from a clergyperson if the employee declines due to religious reasons.

NEW: [AFL 20-35.5](#) to All Facilities - September 8, 2021

This AFL revision informs all facilities and applicants that the temporary waiver of specified regulatory requirements contained in this AFL are extended until December 31, 2021, in compliance with [Executive Order N-12-21](#) (PDF). This revision informs applicants and certificate holders how to obtain/maintain an active/employable status after the expiration of the listed waivers on December 31, 2021.

NEW: [AFL 20-40.2](#) to All Facilities, Nurse Assistant Training Programs - September 8, 2021

This revision notifies all facilities the temporary waiver of specified regulatory requirements contained in this AFL are extended until December 31, 2021 in compliance with [Executive Order N-12-21](#) (PDF).

NEW: [AFL 20-49.3](#) to All Facilities - September 8, 2021

This AFL notifies all facilities that the temporary waiver of specified statutory and regulatory requirements is extended until December 31, 2021, in compliance with Executive Order [N-12-21](#) (PDF).

NEW: [AFL 20-57.2](#) to All Facilities - September 8, 2021

This revision notifies all facilities that the temporary waiver of specified statutory and regulatory requirements is extended until December 31, 2021 in compliance with Executive Order [N-12-21](#) (PDF).

[AFL 20-46](#) to All Facilities - September 7, 2021

This All Facilities Letter supersedes AFL 20-46.2, and clarifies the process for requesting staffing resources for healthcare facilities and alternate care sites during the COVID-19 pandemic. This AFL provides a quick reference guide for multi-jurisdictional responses to emergencies and disasters in California. This AFL provides clarification regarding the costs facilities will incur when accessing staffing resources. Facilities requesting staffing resources through the state staffing contract will have to pay the full cost.

[AFL 21-33](#) to All Facilities - August 24, 2021

This All Facilities Letter notifies that the California Department of Public Health (CDPH) is requesting updated emergency contact information from all facilities. CDPH is also requesting updated AFL recipient information.

[AFL 20-22](#) to Skilled Nursing Facilities - August 12, 2021

This All Facilities Letter supersedes AFL 20-22.8, and notifies SNFs of updated CDPH, Centers for Medicare and Medicaid Services (CMS), and Centers for Disease Control and Prevention (CDC) guidance for improving their infection control and prevention practices to prevent the transmission of COVID-19, including guidance for visitation.

[CDPH COVID-19 Toolkit](#) serves as a one-stop-shop for partners to access materials available for download and sharing in support of outreach and education. This toolkit has numerous videos, social media messages, infographics, handouts, fact sheets, and more.

[See a full list of recent AFLs](#)



California Department of Social Services

The Community Care Licensing Division (CCLD) of the California Department of Social Services (CDSS) publishes [Provider Information Notices \(PINs\)](#) to communicate important license related information to CCLD-licensed providers.

The local San Diego Adult and Senior Care Regional Office can be reached at (619) 767-2300 or CCLASCPSanDiegoRO@dss.ca.gov.

NEW: [PIN 21-42-ASC](#) to All Adult and Senior Care Program Residential Licensees, Informational Call Regarding Coronavirus Disease 2019 (Covid-19): Covid-19 Updates & Planning For Flu Season During The Pandemic, September 13, 2021

PIN 21-42-ASC announces an upcoming informational call with Adult and Senior Care (ASC) licensees and their staff on September 15, 2021 to provide COVID-19 updates and planning for the upcoming flu season during the pandemic.

NEW: [PIN 21-18-CCLD](#) to Certified Administrators (Prospective and Current) and Administrator Certification Program Training Vendors, September 10, 2021
PIN 21-18-CCLD supersedes, in part, PIN 20-28-CCLD, dated December 15, 2020, related to statewide waivers allowing certain online courses available to Prospective and Current Certified Administrators of Adult Residential Facilities, Group Homes, Residential Care Facilities for the Elderly, and Short-Term Residential Therapeutic Programs and Administrator Certification Program Training Vendors. PIN 21-18- CCLD also supersedes PIN 21-10-CCLD, dated July 8, 2021, in its entirety and sets an expiration date for the waivers described in this PIN, as authorized by the Governor's Executive Order, N-12-21, dated August 16, 2021.

[PIN 21-41-ASC](#) to All Adult and Senior Care Program Residential Licensees, August 27, 2021

[PowerPoint Slides](#) from informational call with Adult and Senior Care licensees regarding "Updated Statewide Visitation Guidance."

[PIN 21-40-ASC](#) to All Adult and Senior Care Program Residential Licensees, August 27, 2021

PIN 21-40-ASC supersedes in part PIN 21-17.2-ASC, dated May 14, 2021, related to the Visitation Waiver and processes for verifying the vaccination status of all visitors, COVID-19 diagnostic tests of visitors who are unvaccinated or incompletely vaccinated, and adds a requirement that licensees obtain and track documentation of vaccination or COVID-19 diagnostic tests of visitors who are unvaccinated or incompletely vaccinated, in order to have an indoor visit. This PIN also supersedes in part PIN 21-17.2-ASC related to Best Practices for Visitation.

[PIN 21-39-ASC](#) to All Adult and Senior Care Program Residential Licensees, August 25, 2021

Notifies Adult and Senior Care (ASC) licensees and Continuing Care Retirement

Community providers that pursuant to the Governor's Executive Order N-12- 21, dated August 16, 2021, authority for COVID-19 related waivers was extended and the waivers will expire no later than December 31, 2021, or earlier as determined by California Department of Social Services.

[PIN 21-38-ASC](#) to All Adult and Senior Care Program Residential Licensees, August 19, 2021

PIN 21-38-ASC supersedes [PIN 21-12-ASC](#), dated February 10, 2021, and [PIN 21-17.2-ASC](#), dated May 14, 2021, in part and provides updated guidance to Adult and Senior Care residential licensees related to face masks, surgical masks, and N95 respirators for facility staff, residents, and visitors. Important! Guidance in PIN 21-12-ASC related to resident isolation and cohorting, staffing considerations based on the resident's COVID-19 status, and use of personal protective equipment (i.e., eye protection, gowns, and gloves) still applies.

[See the full list of recent PINs](#)



Monoclonal Antibody Treatment Available at New Locations!

The U.S. Food and Drug Administration issued an [Emergency Use Authorization \(EUA\)](#) for a monoclonal antibody therapy combination called REGEN-COV, comprised of the casirivimab and imdevimab monoclonal antibodies from Regeneron. This life-saving combination therapy is authorized for the treatment of mild to moderate COVID-19 in symptomatic patients with positive results who are at high risk for progressing to severe COVID-19 disease or hospitalization. [High risk persons](#) include those ≥ 65 years of age, or with a BMI ≥ 25 , or with diabetes, or pregnancy, or who have certain chronic medical conditions.

A new MARC location is coming soon to Clairemont Friendship Center in Clairemont. For more information, please visit the [Monoclonal Antibody Regional Center webpage](#).

Rapid Response Teams were recently developed to conduct on-site administration of the treatment and provide training for Skilled Nursing Facility staff in order for the Skilled Nursing Facility staff to administer the treatment in the future. Skilled Nursing Facility staff can contact mcsdnursingmabinfusion.hhsa@sdcountry.ca.gov to request Rapid Response Teams or ask questions.



Federal Retail Pharmacy Program (FRPP) Update on COVID-19 Vaccines

UPDATED: Through the Federal Retail Pharmacy Program (FRPP), the CDC is allocating COVID-19 vaccines directly to enrolled retail and **LTC pharmacies**. Three LTC-specific groups (MHA, Innovatix-PharMerica, and GeriMed) receive federal doses and allocate them to member pharmacies who can then provide vaccines to LTC facilities. Please note, not every LTC pharmacy in California is enrolled in the FRPP. Those not enrolled in the FRPP may enroll as vaccine providers at [myCAvax](#) or LTC pharmacies may enroll under one of the current Group Purchasing Organizations (MHA, Innovatix-PharMerica, and GeriMed) to receive federal vaccine doses. **To request vaccines from your contracted LTC pharmacy:**

1. Enroll in the San Diego Immunization Registry: <http://www.sdiz.org/cair-sdir/enrollment.html>
2. Contact your pharmacy to determine if they are enrolled in the FRPP.
 - If the LTC pharmacy is enrolled in the FRPP, the pharmacy can subcontract with facilities to also administer the vaccine, and the facility does NOT need to enroll as a vaccine provider.
 - **If the LTC pharmacy is not enrolled in the FRPP, facilities can register to be a vaccinator through <https://mycavax.cdph.ca.gov/s/>.**
3. If your contracted pharmacy cannot assist, you may request assistance from other San Diego LTC pharmacies enrolled in the FRPP:
 - Guardian Pharmacy Services (MHA): cvrs@guardianpharmacy.net
 - Omnicare of San Diego: Chadd.Eno@omnicare.com
 - Pharmerica (Innovatix): ImmunizeLTC@pharmerica.com
 - SNP Pharmacy LLC (MHA): vaccines@snp-rx.com

FACILITY RESOURCES AND GUIDANCE

[County of San Diego, Public Health Order](#)

[CAHAN San Diego](#)

[Cal/OSHA and Statewide Industry Guidance on COVID-19](#)

[California Department of Social Services, Provider Information Notices](#)

[California Department of Public Health, All Facilities Letters](#)

[CDC Guidance and Resources for Infection Control in Facilities](#)

[Centers for Medicare & Medicaid Services Visitation Guidance](#)



Our mailing address is:
COVID-LTC@sdcounty.ca.gov

Want to change how you receive these emails?
You can [update your preferences](#) or [unsubscribe from this list](#).