



CORONAVIRUS
DISEASE 2019

(COVID-19)

WEEKLY UPDATE

LONG-TERM CARE AND RESIDENTIAL CARE FACILITIES

Thursday, October 1, 2020

Greetings Long-Term Care and Residential Care Facilities of San Diego County,

Please find information below regarding the latest guidance and resources from county, state, and federal organizations, including **new updates**:

- All Facilities Letter (AFL) to Skilled Nursing Facilities, Nursing Facilities, Intermediate Care Facilities, and Swing Bed Hospitals regarding changes on the Minimum Data Set 3.0v1.17.2 effective October 1, 2020 (**AFL 20-76**)
- Notes from the California Department of Public Health conference call for Skilled Nursing Facilities Infection Prevention Calls (September 23 – 24, 2020)
- Provider Information Notice (PIN) regarding influenza, COVID-19, and pneumonia in Adult Day Programs (**PIN 20-35-ASC**)
- PIN regarding influenza, COVID-19, and pneumonia in Adult and Senior Care Residential Facilities (**PIN 20-34-ASC**)
- PIN providing Adult Day Programs COVID-19 guidelines (**PIN 20-33-ASC**)
- PIN providing an update to information on an important licensee COVID-19 status survey disseminated via the Everbridge Mass Notification System (**PIN-20-32-ASC**)
- PIN regarding assisting residents with telehealth visits (**PIN 20-31-ASC**)
- Reminder where to view the current San Diego County COVID-19 **Testing Positivity Rate**
- CDC webinar “**Wear it, Don’t Share it – The Art and Science of Cloth Masks**”, Monday, October 5, 2020
- The California Medical Association’s wellness initiative launched **Care 4 Caregivers Now** which recently expanded its mission to help more health care workers

- Halloween and Holiday Guidance during the COVID-19 pandemic
- Slide presentation by Rosie Rascon, County of San Diego Registrar of Voters, from our last telebriefing on September 25, 2020
- County Public Health Order updated September 30, 2020
- Check Your Mood 2020: 10-Day Social Media Campaign

As a reminder, if you have a positive COVID-19 case at your facility, please report it by calling the County Epidemiology Unit phone line at (619) 692-8499 or (858) 565-5255 for after-hours or on the weekend. The County as well as your State licensing departments are here to support you.

Please be sure to email us at moc.logs.hhsa@sdcounty.ca.gov if you need personal protective equipment. For additional information and resources, please see our website www.coronavirus-sd.com/LTC.

Thank you for your continued efforts and partnership with the County of San Diego!



Announcements and News



California Department of Public Health

CDPH publishes news and All Facilities Letters (AFLs) regularly. If you would like to receive email notifications of AFLs, please submit your request to LNCPolicy@cdph.ca.gov. See the newly released advisories below:

NEW! Letter to Skilled Nursing Facilities, Nursing Facilities, Intermediate Care Facilities, and Swing Bed Hospitals: AFL 20-76 – September 29, 2020

This AFL informs all Medicare and/or Medicaid certified nursing facilities to use the revised MDS 3.0 v1.17.2, effective October 1, 2020.

[Click here to read AFL 20-76](#)

NEW! Notes from the CDPH conference call for Skilled Nursing Facilities Infection Prevention Calls September 23 – 24, 2020.

Please see attached PDF titled, “AFC-SNF+IP+Call+Notes+9.23+&+9.24.20”.

Letter to All Facilities: AFL 20-75 – September 22, 2020

This AFL reminds licensed health facilities of requirements to report outbreaks and unusual infectious disease occurrences to their local health department and Licensing and

Certification District Office and provides investigation and reporting thresholds for reporting for COVID-19. The national Council of State and Territorial Epidemiologists recently posted [Proposed Investigation/Reporting Thresholds and Outbreak Definition for COVID-19 in Acute Care Hospitals, Critical Access Hospitals, Long-Term Care Facilities \(LTCFs\) and Long-Term Care Acute Hospitals](#) (PDF). These thresholds are intended to expedite facilities' investigation of COVID-19 cases and reporting to public health authorities, to help ensure early detection of possible outbreaks and timely intervention to prevent the virus' spread.

[Click here to read AFL 20-75](#)

Letter to Skilled Nursing Facilities: AFL 20-53.3 – September 12, 2020

This AFL supersedes 20-53.2 and provides recommendations for SNFs developing COVID-19 Mitigation Plans. This includes recommendations for baseline, screening, and response-driven testing of SNF residents and health care personnel to prevent spread of infection in the facility. This revision updates and clarifies testing guidelines to align with the Centers for Medicare and Medicaid Services interim final rule on facility and resident COVID-19 testing and terminology from [new CDC testing guidance](#), and includes the use of point of care antigen test instruments. **Attachment 1 explains Baseline Symptomatic and Response COVID-19 Testing of SNF Resident and Health Care Providers is available [here](#).**

[Click here to read AFL 20-53](#)

[Click here to see a full list of recent AFLs](#)



California Department of Social Services

The Community Care Licensing Division (CCLD) of the California Department of Social Services (CDSS) publishes [Provider Information Notices \(PINs\)](#) to communicate important license related information to CCLD-licensed providers. The local CDSS San Diego Adult and Senior Care office can be reached at (619) 767-2300 or CCLASCPSanDiegoRO@dss.ca.gov.

NEW! Letter to All Adult Day Program Licensees– October 1, 2020

PIN 20-35-ASC provides information for Adult Day Programs licensees related to the prevention, mitigation, and containment of the flu, COVID-19, and pneumonia based on the recommendations from the Centers for Disease Control and Prevention and California Department of Public Health guidance.

[Click here to read PIN 20-35-ASC](#)

NEW! Letter to All Adult and Senior Care Program Residential Licensees – September 30, 2020

PIN 20-34-ASC provides information for the prevention, mitigation, and containment of the flu, COVID-19, and pneumonia in Adult and Senior Care residential facilities based on the recommendations from the Centers for Disease Control and Prevention and California Department of Public Health guidance. This PIN must be posted in the facility where residents can easily access it and licensees must distribute the following sections of this PIN to persons in care and if applicable, their Authorized Representative:

Addendum F: Persons in Care Fact Sheet, and attach to it:

- Addendum A: Signs and Symptoms of Flu, COVID-19 and Pneumonia
- Addendum C: Prevention (Vaccinations), Testing and Treatment Measures

[Click here to read PIN 20-34-ASC](#)

NEW! Letter to Adult Day Program Licensees– September 30, 2020

PIN 20-33-ASC provides guidance specifically for Adult Day Program licensees related to the prevention, containment, and mitigation of COVID-19 as well as information about changing program operations. Please post this PIN in the facility where clients can easily access it and distribute the Addendum F, Client Fact Sheet, of this PIN to the clients and if applicable, their Authorized Representative.

[Click here to read PIN 20-33-ASC](#)

NEW! Letter to All Adult and Senior Care Facility Licensees – September 28, 2020

PIN 20-32-ASC provides an update to information on an important licensee COVID-19 status survey disseminated via the Everbridge Mass Notification System. CCLD has replaced the *Licensee Assistance Survey* that you have been receiving since June with the new *Weekly Licensee Survey*. Beginning on Monday, September 28, this new survey now focuses on resident/client and staff COVID-19 testing in your facility to ensure our efforts to track and project the COVID-19 pandemic data and assist in protecting individuals in your care continue.

[Click here to read PIN 20-32-ASC](#)

NEW! Letter to All Adult and Senior Care Program Residential Licensees – September 25, 2020

PIN 20-31-ASC provides Adult and Senior Care (ASC) residential licensees with guidance on assisting residents with telehealth visits. Please post this PIN in the facility where residents can easily access it and distribute the Resident Fact Sheet (located at the end of this PIN) to residents and if applicable their representatives.

[Click here to read PIN 20-31-ASC](#)

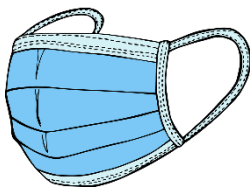
[Click here to browse the full list of recent PINs](#)



REMINDER to check the County Triggers Dashboard for the Testing Positivity Rate

The frequency of routine testing of SNF staff depends on the San Diego County Positivity Rate. Please click the link below to access the **COVID-19 Testing Positivity Rate**.

[View the current Positivity Rate here](#) (Item #10: Testing Positivity).



NEW! The Centers for Disease Control and Prevention is hosting a COVID-19 webinar to discuss updates and cloth mask utilization.

“Wear It, Don’t Share It – The Art and Science of Cloth Masks”

Monday, October 5, 2020, 12:00 PM (PST)

Dr. Cliff McDonald, CDC’s Acting Chief Medical Officer and Dr. Nancy Burton, Industrial Hygienist, NIOSH Division of Field Studies and Engineering will present. LCDR Samantha Morgan, Deputy, Policy Unit Partnerships & Risk Management Team will moderate. Dr. McDonald will share updates on CDC’s COVID-19 response, including the latest scientific information and what everyone should know about protecting themselves and others. In addition, Dr. Burton will cover guidance on cloth masks. [Click here to register.](#)

Submitting questions in advance is strongly encouraged. Please email eocevent337@cdc.gov with “Partner Call 10/5” in the subject line. This call will be recorded and posted on CDC’s COVID-19 Webinar and Partner Call Videos found [here](#).



Care 4 Caregivers Now

NEW! In response to the pandemic, the California Medical Association’s wellness initiative launched Care 4 Caregivers Now which recently expanded its mission to help more health care workers. Peer coaching is now available at no cost for all health care workers struggling with any stress-related challenge or who simply want to take action to feel more empowered. This is a confidential and virtual service.

[To learn more, click here.](#)



Flu and Vaccine Information

Getting Vaccinated Against the Flu More Important Than Ever

In an effort to prevent a "twindemic" of COVID-19 and seasonal influenza, California Department of Public Health (CDPH) is urging Californians to get vaccinated against the flu now to protect themselves and their loved ones. Caregivers and residents in long-term care facilities are at higher risk of getting severe flu disease. For more information about the flu, visit [CDPH's website](#). For the flu vaccine location nearest you, visit www.flu.gov. To read the full CDPH article, click [here](#).

For additional **Flu Season 2020-2021 information**, please see resources below:

[Click here](#) for the County of San Diego Immunization Program influenza webpage

[Click here](#) for the Centers for Disease Control and Prevention (CDC) ways to protect your health this season and more:

- [The Difference between Flu and COVID-19](#)
- [Information for Health Care Professionals 2020-2021 Flu Season](#)
- [Frequently Asked Influenza \(flu\) Questions: 2020-2021 Season](#)



COVID-19 Holiday Guidance

NEW! COVID-19 Considerations for the upcoming holiday season:

[County of San Diego Halloween Guidance](#) To minimize the spread of COVID-19 and ensure children have a fun, safe Halloween, the County of San Diego offers guidance for the most common activities to protect you and your loved ones.

[CDC Guidance for Celebrating Holidays](#) The CDC provides considerations to help protect individuals, their families, friends, and communities from COVID-19 for the holidays.



NEW! Slide presentation by Rosie Rascon, County of San Diego Registrar of Voters, from her presentation during our telebriefing on 9/25/20, regarding how to help residents safely exercise their right to vote and information on what voters need to know about this upcoming election. Visit [SDVOTE.COM](https://sdvote.com) or call 858-565-5800. Please note the [Accessible Voting](#) and [Where's My Ballot](#) links.

Please see attached PDF titled, "November Election 2020"



Latest San Diego County Public Health Order

UPDATED! The latest updates to the local Public Health Order included additional key items for reopening businesses (September 30, 2020). [Read the latest order.](#)



Check Your Mood 2020: 10-Day Social Media Campaign

NEW! This year's Virtual Check Your Mood 2020: 10-Day Social Media Campaign will be taking place from September 28th – October 8th. The Check Your Mood campaign is designed to raise mental health awareness in local communities in conjunction with the National Depression Screening Day on October 8, 2020.

The Check Your Mood website provides messaging, an e-toolkit, and downloadable resource materials for organizations and mental health advocates to utilize and to share with employees, clients, community members, families, and friends. To view these resources, click [here](#).



TRACIE
HEALTHCARE EMERGENCY PREPAREDNESS
INFORMATION GATEWAY

COVID-19 Considerations for Long-Term Care Facilities Toolkit – September 2020

“This toolkit is a compilation of considerations for LTC facilities based on lessons learned during the early months of the pandemic accompanied by resources to inform planning and response efforts.” Click [here](#) for the full Toolkit.



Upcoming Telebriefings



**Friday, October 9
at 4:00pm**

Telebriefing for **Long-Term Care and Residential Care Facilities**

WHEN: Friday, October 9, 2020, at 4:00 p.m.

Click [here](#) to learn more about the telebriefing, [submit questions](#) before each telebriefing, and visit the **Long-Term Care and Residential Care Facilities** sector support [webpage](#).



**Friday, October 16
at 4:00pm**

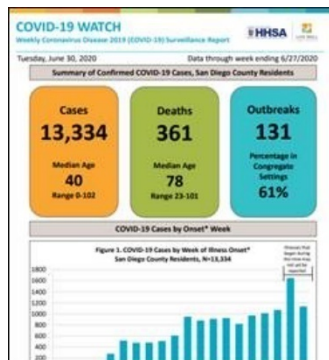
Telebriefing for **Older Adult and Disability Service Providers**

WHEN: Friday, October 16, 2020, at 4:00 p.m.

Click [here](#) to learn more about the telebriefing, [submit questions](#) before each telebriefing, and visit the **Older Adult and Disability Service Providers** sector support [webpage](#).



Ongoing Programs, Services, and Resources



County of San Diego COVID-19 Dashboard and Weekly “COVID-19 Watch” Report

The County of San Diego publishes a weekly surveillance report on the [coronavirus-sd.com](#) website called “COVID-19 Watch”.

[Click here to review the report.](#)

Visualize and track data real time on the interactive web-based dashboard developed by the County of San Diego Epidemiology and Immunization Services Branch.

[See the dashboard here.](#)



San Diego County Emergency Site

As parts of California continue to battle wildfires, it is a sobering reminder that disasters can happen at any time and that everyone should be prepared for emergencies. Here are some resources for the public to stay informed about and prepare for fires and other disasters in San Diego County:

- For fire, disaster information updates, and the County of San Diego Emergency Map, visit www.sdcountyemergency.com
- To prepare for, plan for, and stay informed on disasters in San Diego County, visit www.ReadySanDiego.org
- Download the **SDEmergencyApp**, a no-cost mobile application available to download for iOS and Android devices. To learn more, click [here](#)
- Register [here](#) with **AlertSanDiego** to get emergency notifications, like evacuation orders and warnings, on your cell phone during a disaster in your area. (Listed and unlisted landlines are already included in this system and do not need to be registered)



- [COVID-19 in Nursing Homes and Long-Term Care Facilities](#)
- [Considerations for Use of SARS-CoV-2 Antigen Testing in Nursing Homes](#)
- [Printable Algorithm](#) for considerations for testing asymptomatic and symptomatic residents or HCP.
- [Guidelines on Masks, How to Select, Wear, and Clean Your Mask](#)
- [Guidelines for Group Homes for Individuals with Disabilities](#)
- [Guidelines for Direct Service Providers of Individuals with Disabilities](#)
- [Considerations When Preparing for COVID-19 in Assisted Living Facilities](#)
- [Considerations for Memory Care Units in Long-term Care Facilities](#)

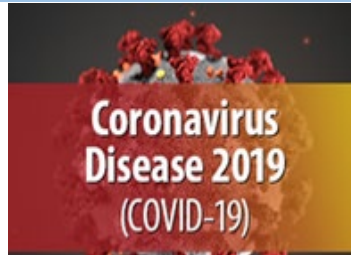
For general information about COVID-19 from the CDC, please visit www.cdc.gov/coronavirus.



211 San Diego

For health or testing related questions, contact your healthcare provider. For general questions about COVID-19, information about community resources, or if you are uninsured, call **2-1-1 San Diego**.

[Click here](#) for free COVID-19 testing information.



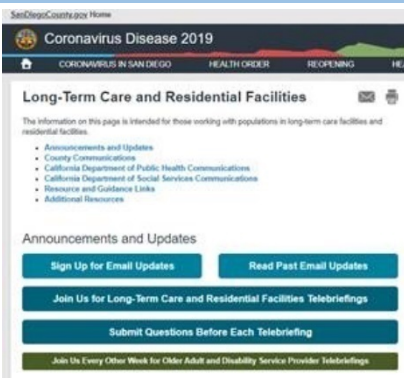
General COVID-19 Information from Federal and State Organizations

- [Centers for Disease Control and Prevention – COVID-19](#)
- [California Department of Public Health, Immunization Branch – COVID-19](#)
- [California Department of Social Services – COVID 19](#)



COVID-19 Downloadable Resources and Materials for Your Facility

[Find FAQs, posters, videos, and other materials.](#)



Recent Email Updates from the County of San Diego Long-Term Care and Residential Care Sector

- [September 24, 2020 Update](#)
- [September 17, 2020 Update](#)
- [September 10, 2020 Update](#)

[Click here to browse all past email updates.](#)



Stay Connected



For questions related to long-term care and residential care facilities, please email: COVID-LTC@sdcounty.ca.gov.



Get the latest information about what's happening across the county with COVID-19.



Text **COSD COVID-19** to **468-311**

to get text alert updates from the County of San Diego.





**California Department of Public Health
Center for Health Care Quality
AFC Skilled Nursing Facilities Infection Prevention Calls
September 23rd – 24th, 2020**

The September 23rd webinar reviewed the following AFLs and memos. The recording and handouts can be found at: <https://www.hsag.com/cdph-ip-webinars>.

- September 12th, [CDPH AFL 20-53.3](#): COVID-19 Mitigation Plan Recommendations for Testing of HCP and Residents at SNFs
- August 25, 2020, [CDPH AFL 20-22.4](#) Guidance for Limiting the Transmission of COVID-19 in Long-Term Care Facilities
 - Outdoor visitation has been required in California since June 26, 2020. This AFL will be updated next week with further visitation guidance.
- September 17, 2020, [CMS QSO-20-39-NH](#) Nursing Home Visitation—COVID-19
- September 22, 2020, [CDPH AFL 20-74](#) COVID-19 Recommendations for Personal Protective Equipment (PPE), Resident Placement/Movement, and Staffing in Skilled Nursing Facilities

Important Updates:

COVID-19 Data Reports: Per [AFL 20-68](#), HSAG creates COVID-19 trend reports every Monday for all nursing homes in the state using data from NHSN. To access your report, please complete the [HSAG QIIP Administrator Form](#). To ensure your facility's data report is updated, confer rights to HSAG by following these [instructions](#). If you notice errors in your data, you can log into NHSN to fix your data or contact Rose Chen from HSAG at rchen@hsag.com and she can help you.

CMS Targeted COVID-19 Training for Frontline Nursing Home Staff and Management: Access CMS scenario based trainings for your staff at the CMS Quality, Safety and Education Portal (QSEP): <https://qsep.cms.gov>. To get a certificate of completion, staff need to complete the pre- and post-test, training and the evaluation.

October 30th Deadline: iNSPIRE Grant Available to 60 Nursing Homes: LeadingAge California received CMP funds for 60 nursing homes to get free technology and equipment. This project will provide residents with internet applications so they can stay in touch with the world, including email and video chat tools, to stay connected with family and friends. It also has social-oriented content like music, videos, holiday activities, TV, and sing-alongs to encourage social interaction with residents. There are 30 more spots to sign up. To apply for iNSPIRE equipment, training, and 24 months of software subscription, apply by October 30th at <https://www.leadingageca.org/inspire-grant>. Contact Amanda with questions: 916.469.3385 adavidson@leadingageca.org.

Questions & Answers from September 23rd:

Q: Question related to communal dining and activities.

A: [CMS QSO-20-39-NH](#) states that communal activities and dining may occur while adhering to the core principles of COVID-19 infection prevention. Residents may eat in the same room with social distancing. Facilities should consider additional limitations based on status of COVID-19 infections in the facility. Additionally, group activities may also be facilitated (for residents who

have fully recovered from COVID-19, and for those not in isolation for observation, or with suspected or confirmed COVID-19 status) with social distancing among residents, appropriate hand hygiene, and use of a face covering. Facilities may be able to offer a variety of activities while also taking necessary precautions. CDPH will be updating an AFL soon to incorporate new guidance for visitation. In this guidance we didn't go into much detail about activities related to indoor dining. This still needs to be done with proper distancing and would still need to be done in well-ventilated areas. If you have residents who have a high risk of choking, it is more dangerous for them to be eating alone or with no assistance, as compared to a communal space. We have stated that if the SNF can schedule this, as well as keep sufficient PPE on hand and being mindful of cohorting and regular cleaning, to encourage this culture of new normal. Process and protocols need to be in place to prevent infection and the spread of disease.

Q: Question related to compassionate care rules. Because new admits with dementia cannot leave their rooms during 14-day quarantine and are on droplet/contact precautions would visitation be allowed under compassionate care rules?

A: [CMS QSO-20-39-NH](#) states that "compassionate care situations" do not exclusively refer to end-of-life situations. Examples of other types of compassionate care situations include, but are not limited to: • A resident, who was living with their family before recently being admitted to a nursing home, is struggling with the change in environment and lack of physical family support. • A resident who is grieving after a friend or family member recently passed away. • A resident who needs cueing and encouragement with eating or drinking, previously provided by family and/or caregiver(s), is experiencing weight loss or dehydration. • A resident, who used to talk and interact with others, is experiencing emotional distress, seldom speaking, or crying more frequently (when the resident had rarely cried in the past). The question regarding new admits with dementia will be something that CDPH will take into consideration in providing further guidance. There are different factors and challenges to consider with memory care patients. CDPH will take this back to consider creative strategies to enable safety in these situations.

Q: If a facility does not have any outside place or a large ventilation area, how can they do visitations safely?

A: In these situations, we encourage facilities to exercise creative solutions. We can also take this question back to our Infection Prevention team to try and get more guidance for these situations.

Q: We have kept our dialysis in the yellow zone since the beginning, if there's no critical concern for COVID-19, may we include such residents in our program of distance masked monitored with a family member?

A: This would be okay. These are residents that wouldn't have a known exposure, but you are keeping them in a potentially exposed area and using PPE for that purpose. We have seen that there is an increased risk for infection in patients that go to and from dialysis, but we don't think an outbreak in the facility would preclude visitation in an outdoor setting.

Q: For outside healthcare workers coming into a facility, do they need to produce evidence that they have been tested in the last seven days?

A: Yes, per the [CMS QSO-20-38-NH](#) memo it does ask that any visiting Healthcare professional needs to have their testing completed. It would be up to the employer to test them, but it

would be the responsibility of the SNF to document that the individual is COVID-negative from the contracting employer.

Q: If I am a nurse for multiple yellow zone patients, can I wear the same N95 mask or do I need a different mask for every patient? Also, can I reuse my face shield for yellow and green zone patients?

A: Related to the respirator and face shield, you can wear it continuously between residents and between zones over the course of your shift. It is not necessary to disinfect in between each resident, so long as staff member does not touch the face shield/respirator before or after completing hand hygiene.

Q: If a hospital tests a patient for COVID on the day of discharge and it's negative, does the nursing home still need to keep the patient in isolation for 14 days?

A: Yes, because the incubation period is 14 days. Even if the test is negative, it doesn't rule out the possibility that the individual was incubating and might become positive later.

Q: When does the 14-day observation start? The day the patient was admitted into the hospital or when they are admitted to the SNF?

A: This depends on criteria that's described in AFL 20-53.3. If there are no transmissions and exposures in the hospital, then we can start when the patient is admitted to the hospital. If the hospital is undergoing transmission and exposure, then the 14 days would start when they are admitted to the SNF.

Q: Patient on the 14-day incubation period how do they do rehab?

A: Ideally, we are going to have them do rehab in the room. When there is rehab that requires more space and equipment then there are solution that we just mentioned that there are areas outside being used as a gym, PPE in place, physical distancing, and scheduling these activities such that a common space is shared properly by cohorts.

Questions & Answers from September 24th:

Q: Question regarding AFL 20.74. If residents on wings are exposed, and a CNA in one unit becomes positive, should all staff in that unit working be considered exposed as well as residents?

A: These types of situations have many nuances and factors to consider. To address this situation specifically, when you identify a single case in a SNF (regardless if it is staff or a resident), there are often a lot more cases that are attributed to this single case. More times than not, these single cases are the tip of the iceberg and a signal that other cases may not have been identified for different reasons such as being asymptomatic. Regarding whether the residents should be moved, this is dependent on availability, configuration of the facility, and bed capacity. If sufficient private rooms are available, this would be advised as well.

Q: What if CDPH's guidance conflicts with a local health department's guidance?

A: As stated before, it is always advised to defer to guidance that is stricter or more conservative in nature. Facilities have different structures, layouts, and capacities, and these guidelines should be applied in a manner that best addresses those specific needs.

Q: Can CPAP patients be cohorted with other patients, if they are all in the green zone?

A: Based on the scenario you described, this shouldn't be a problem. Because there are no positive/exposed cases involved, cohorting these patients together would be okay, and no other considerations would be needed.

Q: Are staff now required to wear eye protection in green zones?

A: This is probably related to a CDC guidance about a month ago recommending broadly in areas with moderate community transition that eye protection should be used. The CDC indicated this applies to all types of healthcare settings, including SNFs.

Q: Question related to enhanced standard precautions. Are these now mandated?

A: This refers to certain practices that put certain healthcare personnel at risk and some residents are at higher risk for infection. For these types of residents, when you are performing certain types of care, CDPH is saying for these types of residents that the appropriate type of PPE must be worn. To address this original question, enhanced standard precautions are mandated.

Q: Can staff use face shields over multiple days?

A: Yes, this would be allowed however it is crucial they are cleaned and stored safely. This prevents any potential contamination before reusing.

Q: Our management team is having a challenge educating staff that they should not wear a surgical mask over their N95 per CalOSHA guidance. Staff are resistant and feel more comfortable double masking. Can you please address what the negative outcomes are to the resident if staff double mask?

A: We understand that some staff are using non-N95 masks to cover their N95 to prolong its use. While we understand the inclination to put another layer of protection on, doing so defeats the purpose of the respirator. The effectiveness of the respirator depends on the seal. If another mask is put under or on top of the respirator, it will affect the fit and therefore will not be operating correctly. If your staff are concerned about the respirator surface getting contaminated, a better way is to use a face shield that would be a barrier that would cover the respirator, but not rest on it or push on it that would disrupt the seal. In this case, more layers of protection are not better.

Q: Question related to weekly testing. Staff are pushing back against getting the flu shot.

A: This year it is more critical than ever for healthcare personnel to receive their flu shot. Regardless of guidance prior to COVID-19, it is imperative that healthcare personnel especially take every precaution possible to prevent any additional outbreaks – even if it is the flu.

Q: Question related to mandated testing. The high level of testing impedes upon the completion of other vital procedures that need to be done.

A: Thank you and these concerns are well taken. We understand that this is not an easy situation and is very challenging. We understand that you do not want to sacrifice quality of care for your patients in order to meet these deadlines. Please do not hesitate to reach out to us for further assistance if need be.



[SDVOTE.COM](https://sdvote.com)

Key Dates

Countywide Mailer

Sample Ballot & Voter Info Pamphlet Mailing
(*starts*)

All Voters Mailed a Ballot & In-Office Voting
(*begins*)

Last Day To Register

Super Polls (*open*)

ELECTION DAY

Certification of Election

Week of
Aug 3

Sep 24

Oct 5

Oct 19

Oct 31

Nov 3

Dec 3

Call To Action

Communicate Message

- ▶ Confirm Addresses
- ▶ Encourage Voting, Signing, Sealing & Returning Mail Ballot via a Trusted Source
 - ▶ US post office
 - ▶ mail ballot drop off location
 - ▶ polling place
 - ▶ Informed Delivery (USPS)
 - ▶ Where's My Ballot?
- ▶ Use polling place as alternative
 - ▶ likelihood it has changed



&

**Many More
Organizations**