



CORONAVIRUS
DISEASE 2019 (COVID-19)

WEEKLY UPDATE

LONG-TERM CARE AND RESIDENTIAL CARE FACILITIES

Wednesday, August 26, 2020

Greetings Long-Term Care and Residential Care Facilities of San Diego County,

Please find information below regarding the latest guidance and resources from county, state, and federal organizations, including **new**:

- All Facilities Letter regarding guidance for limiting transmission of COVID-19 in long-term care facilities (AFL 20-22.4),
- AFL regarding guidance to Skilled Nursing Facilities for evacuating and transferring residents in emergency situations (AFL 20-67),
- Provider Information Notice providing guidance to adult and senior care program licensees for evacuating and transferring residents in emergency situations during the COVID-19 pandemic (PIN 20-28-ASC), and
- Notes from the California Department of Public Health conference call for Skilled Nursing Facilities to provide updates on COVID-19 on 8-20-20.

As a reminder, if you have a positive COVID-19 case at your facility, please report it by calling the County Epidemiology Unit phone line at (619) 692-8499 or (858) 565-5255 for after-hours or on the weekend. The County as well as your State licensing departments are here to support you and can offer on-site technical assistance with infection control and prevention, staff training, and testing resources.

We promised to provide follow-up to two questions asked during a recent Long-Term Care and Residential Facilities Providers telebriefing. Please see answers below:

1. **What coordination is made with Residential Care Facilities for the Elderly (RCFE) industry groups in sharing guidance to facility owners and care workers?** The California Department of Social Services, Community Care Licensing (CCL) leadership on the state level meets at least twice a month with RCFE industry groups, such as the California Assisted Living Association, to review guidance and specifically discuss pending Provider Information Notices (PINs) for feedback as well as best ways to disseminate information to members and stakeholders.
2. **Are there translators available for operators and caregivers where English is not the first language and medical terms are not easily understood?** Yes, CCL does have translation services available if needed when communicating information to facility owners and staff. In addition, they have bilingual in-house staff (for languages such as Tagalog and Spanish). The PINs and other resources are available in various languages. Also, CCL staff strive to avoid medical jargon when communicating with facility personnel.

As we continue to give updates from our County public health perspective, please always confer with your licensing entity for approval of any operational changes.

If you missed any recent email updates from this sector, [review them here](#). For additional information and resources, please see our website www.coronavirus-sd.com/LTC.

Thank you for your continued efforts and partnership with the County of San Diego!



Announcements and News



California Department of Public Health

CDPH publishes news and All Facilities Letters (AFLs) regularly. If you would like to receive email notifications of AFLs, please submit your request to LNCPolicy@cdph.ca.gov. See the newly released advisories below:

NEW! Letter to Skilled Nursing Facilities: AFL 20-22.4 – August 25, 2020

Guidance for Limiting the Transmission of COVID-19 in Long-Term Care Facilities (This AFL supersedes guidance provided in AFL 20-22.3)

- This AFL notifies long-term care (LTC) facilities of Centers for Medicare and Medicaid Services (CMS) and Centers for Disease Control and Prevention (CDC) guidance for improving their infection control and prevention practices to prevent the transmission of COVID-19, including revised guidance for visitation,
- authorizes LTC facilities to temporarily modify their facility's visitation policies in accordance with CMS and CDC COVID-19 guidance when necessary to protect the health and safety of residents, staff, and the public, and
- updates visitation guidance to require facilities to permit ombudsman to enter regardless of whether or not there is a COVID-19 outbreak.

[Click here to read AFL 20-22.4](#)

NEW! Letter to Skilled Nursing Facilities: AFL 20-67 – August 20, 2020

Emergency Resident Transfers during the COVID-19 Pandemic

This AFL provides guidance to skilled nursing facilities (SNFs) for evacuating and transferring residents in emergency situations during the COVID-19 pandemic. Facilities must be prepared for natural disasters and emergencies such as wildfires, floods, earthquakes, and widespread serious illnesses. To keep residents and staff safe in emergency situations during the COVID-19 pandemic, the California Department of Public Health recommends all SNFs review and modify, as needed, their emergency plans to ensure COVID-19 infection control measures are addressed. State and federal regulations require SNFs to develop and maintain an emergency preparedness plan that must be reviewed and updated at least annually.

[Click here to read AFL 20-67](#)

NEW! Notes from the California Department of Public Health conference call for Skilled Nursing Facilities to provide updates on COVID-19 on 8-20-20.

Please see attached PDF titled, "AFC-SNF+IP+Call+Notes+8.20.20".

Letter to Skilled Nursing Facilities: AFL 20-66 – August 17, 2020

Updated Guidance for the Provision of Home Dialysis Services in a Skilled Nursing Facilities

This AFL supersedes AFL 07-23, and notifies Skilled Nursing Facilities (SNFs) and dialysis clinics of updated guidance from the Centers for Medicare and Medicaid Services regarding the provision of dialysis services to SNF residents through a collaborative arrangement between the SNF and a qualified dialysis facility.

[Click here to read AFL 20-66](#)

[Click here to see a full list of recent AFLs](#)



California Department of Social Services

The Community Care Licensing Division (CCLD) of the California Department of Social Services (CDSS) publishes Provider Information Notices (PINs) to communicate important license related information to CCLD-licensed providers. The local CDSS San Diego Adult and Senior Care office can be reached at (619) 767-2300 or CCLASCPSanDiegoRO@dss.ca.gov.

NEW! Emergency Resident Transfers During the COVID-19 Pandemic – August 20, 2020 (PIN 20-28-ASC)

This PIN provides guidance for evacuation and transferring of residents during emergency situations while also taking precautions for the COVID-19 pandemic. This PIN also includes the following addendums:

Addendum A: Checklist. List of what to consider when evacuating residents during infectious disease outbreaks.

Addendum B: Decision Tree. Receiving emergency transfer placements decision tree based on COVID-19 screening and/or testing

[Click here to read PIN 20-28-ASC and Addendum](#)

[Click here to browse the full list of recent PINs.](#)



California Health Alert Network San Diego Updates

Health Advisory Update #17: Updated COVID-19 Testing Guidance and Additional Updates – August 17, 2020

Key Messages:

[Centers for Disease Control and Prevention \(CDC\) testing priorities](#) were updated as well as [California Department of Public Health \(CDPH\) testing priorities](#). These have been adapted locally to San Diego County to address local operational considerations and allow organizations to reference in the context of decreased testing-related supplies that some facilities are experiencing. This interim guidance is subject to change as the situation evolves.

Local reporting guidance and resources are highlighted in addition to [updated guidance from Cal/OSHA](#) on respirator supply shortages; an [announcement](#) from the Center for Medicare and Medicaid Services (CMS) that providers can be reimbursed for patient counseling; and CDC updated guidance on several topics, including ending home isolation and discontinuation of transmission-based precautions for hospitalized patients, retesting with or without symptom development in individuals within 3 months of initial symptom onset, eye protection for healthcare workers in communities of moderate to substantial spread, and a new peer to peer clinical management resource.

Please click for [here](#) the **Health Advisory Update #17: Updated COVID-19 Testing Guidance and Additional Guidance.**

Please click [here](#) for the **Priority Level for Testing Criteria: Federal, State, and County Recommendations.**



Voting during the COVID-19 Pandemic: Telebriefing Presentation by the Registrar of Voters

The San Diego County Registrar of Voters will be presenting on Friday, August 28, 2020, at 1:00 pm during the Community-Based Organization- Rural Communities Telebriefing. Please join online to learn more about voting in the November election. To join the Zoom meeting, use the link <https://zoom.us/j824793721> or Call-in at 1 (669) 900-6833 or 1 (346) 248-7799 Meeting ID:824 793 721. Participants will be able to ask questions via the online chat feature on Zoom.



Upcoming Telebriefings



**Friday, Aug. 28
at 4:00pm**

Telebriefing for Long-Term Care and Residential Care Facilities with Special Guest: San Diego Regional Center

WHEN: Friday, August 28, 2020, at 4:00 p.m.

Kate Kinnamont, M.S., Director, Case Management Services, San Diego Regional Center, will present ways on working with people with intellectual disabilities and cognitive impairments during COVID-19.

Please [pre-submit your questions in advance here](#). Participants will have the opportunity to ask questions during the call through the online chat feature on the Zoom platform.

Join the telebriefing at the specified time and date using one of the options below:

- Option 1 | Computer (preferred):
 - Click on the following link <https://zoom.us/j/218631109>
 - Meeting ID: 218 631 109
 - If you have any difficulties accessing the participant link, please use option 2.
- Option 2 | Phone:
 - Dial-In Number: 1 (669) 900-6833 or 1 (346) 248-7799
 - Meeting ID: 218 631 109.

[Visit the Long-Term Care and Residential Care Facilities Sector Support webpage to learn more.](#)



**Friday, Sept. 18
at 4:00pm**

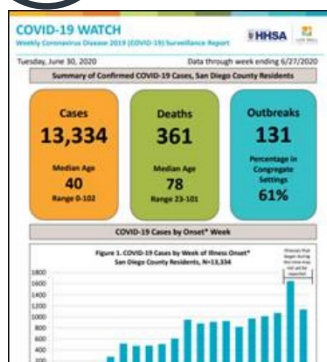
Telebriefing for **Older Adult and Disability Service Providers**

WHEN: Friday, September 18, 2020, at 4:00 p.m.

Please [pre-submit your questions at least 24 hours before the telebriefing](#), so that they can be answered on the call. Participants will have the opportunity to ask questions during the call through the online chat feature on the Zoom platform. [Please click here for more information, including access link and call-in option.](#)



Ongoing Programs, Services, and Resources



County of San Diego COVID-19 Dashboard and Weekly “COVID-19 Watch” Report

The County of San Diego publishes a weekly surveillance report on the coronavirus-sd.com website called “COVID-19 Watch”.

[Click here to review the report.](#)

Additionally, visualize and track data real time on the interactive web-based dashboard developed by the County of San Diego Epidemiology and Immunization Services Branch.

[See the dashboard here.](#)



Latest San Diego County Public Health Order

The latest updates to the local Public Health Order included additional key items for essential businesses still in operation (Effective August 22, 2020).

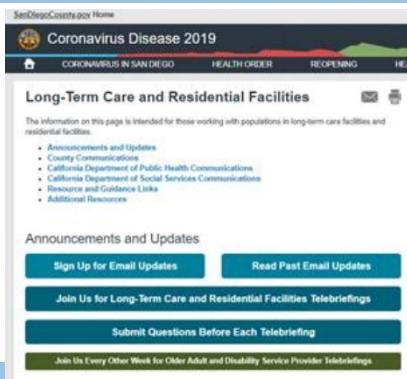
[Read the latest order.](#)

Amended Section 4:

Institutions of Higher Education (IHEs) may open, which includes Vocational and Tech schools, in accordance with the States Reopening Guidance for IHEs.

Amended Section 16b:

Require temperature screening of all employees and prohibit entry to the workplace of employees with a temperature of 100 degrees or more, employees exhibiting COVID19 symptoms as described by the Centers for Disease Control and Prevention, or employees who have recently been exposed to a person who has tested positive for COVID-19 (either directly or through a breach of Personal Protective Equipment in the case of healthcare workers/first responders).



Recent Email Updates and Resources from the Long-Term Care and Residential Care Sector

- [August 19, 2020 Update](#)
- [August 12, 2020 Update](#)
- [August 5, 2020 Update](#)

[Click here to browse all past email updates.](#)



211 San Diego

For health or testing related questions, contact your healthcare provider. For general questions about COVID-19, information

about community resources, or if you are uninsured, call **2-1-1 San Diego**.

[Click here](#) for free COVID-19 testing information.



COVID-19 Downloadable Resources and Materials for Your Facility

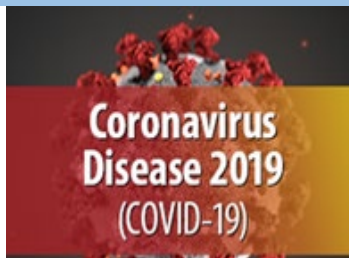
[Find FAQs, posters, videos, and other materials.](#)



Guidance from the Centers for Disease Control and Prevention

- [Guidelines for Group Homes for Individuals with Disabilities](#)
- [Guidelines for Direct Service Providers of Individuals with Disabilities](#)
- [Symptoms of Coronavirus](#)
- [Considerations When Preparing for COVID-19 in Assisted Living Facilities](#)
- [Considerations for Memory Care Units in Long-term Care Facilities](#)

For general information about COVID-19 from the CDC, please visit www.cdc.gov/coronavirus.



General COVID-19 Information from Federal and State Organizations

- [Centers for Disease Control and Prevention – COVID-19](#)
- [California Department of Public Health, Immunization Branch – COVID-19](#)
- [California Department of Social Services – COVID 19](#)



Stay Connected



For questions related to long-term care and residential care facilities, please email: COVID-LTC@sdcounty.ca.gov.



Get the latest information about what's happening across the county with COVID-19.



Text **COSD COVID-19** to **468-311**

to get text alert updates from the County of San Diego.





**California Department of Public Health
Center for Health Care Quality
AFC Skilled Nursing Facilities IP Call
August 20, 2020, 12:00 pm**

I: Questions & Answers:

Q: Question related to FDA-approval of flu vaccines. Any updates on if it will be finalized prior to flu season?

A: We have no updates on FDA timeline, however we do anticipate a lot of influenza vaccines to be made available in CA. We will be connecting facilities with resources throughout the state, for both residents and healthcare personnel.

Q: Question related to guidance and any efforts to streamline the process.

A: We acknowledge that guidelines are complex and constantly evolving. We want to encourage everyone to not hesitate to bring up these issues, so that we can continue to improve and focus alignment efforts. We are always learning everyday and appreciate the patience in fixing these issues.

Q: Wanted to follow up on daily reporting questions and if they will be updated for facilities?

A: Yes, this process will happen however we do not have a concrete timeline yet for when this will be complete.

Q: Follow up on Cal OSHA guidance for N95s and disinfecting.

A: We understand your concerns related to these changes; however, these are the new standards going forward. If these standards are hindering efforts in your respective communities, please contact Cal OSHA related to your specific shortages. We will follow up with the best contact information to use.

Q: Question on cohorting in yellow zone. Can staff assigned in observation/yellow unit cross over to normal/green zone or the opposite?

A: It's most important to be cognizant of staff dedicated to the red area. For this specific scenario discussed, staff can be permitted to move between. It is especially important to note that extended use of PPE should NEVER be practiced in this situation.

Q: Do observation zone staff need separate break rooms from other staff members?

A: This is not necessary. Only staff members in red zones require this.

Q: Question related to dialysis patients. When they return, do they need to be put in observation area?

A: Initially we recommended this, however these individuals will end up perpetually being in this area if this practice continues. They can be monitored and tested, and if they are a known-negative it is not necessary. We encourage facilities to develop strategies for dialysis patients specifically.

Q: Where can I find CDC guidance on healthcare facility workers and quarantine, if their family members are positive?

A: This can be found on the FAQ page for CDC. We will send out the link. Essentially, it says these individuals should be excluded from work for 14 days. What's important to note is if they can reasonably isolate in the household, otherwise the isolation would have to begin after the positive person goes through isolation themselves.

Q: Question related to hospital testing. What is the hospital protocol for testing, when are they allowed to rule out COVID testing?

A: This is a clinical determination and it is hard for us to comment on without more context.

Q: Question related to Cal OSHA guidance. The guidance on extended use respirators maximum wear time is in contradiction to CDC guidance. What takes priority?

A: Cal OSHA is the state regulatory body and takes precedence over the CDC.