



CORONAVIRUS  
DISEASE 2019 (COVID-19)

## WEEKLY UPDATE

### LONG-TERM CARE AND RESIDENTIAL CARE FACILITIES

Wednesday, January 13, 2021

Greetings Long-Term Care and Residential Care Facilities of San Diego County,

Please find information below regarding the latest guidance and resources from county, state, and federal organizations, including **new updates**:

- County of San Diego **Vaccination Super Station** for those eligible for **All Phase 1A (Tiers 1, 2 & 3): Vaccinating NOW**
- California Health Alert Network San Diego, Health Advisory Update #22: **COVID-19 Vaccine Update, January 8, 2021**
- All Facilities Letter (AFL) regarding interdisciplinary team authorized medical interventions for residents unable to provide informed consent and without a health care decision maker (**AFL 20.83.1**)
- AFL providing notification of the implementation of Assembly Bill 1128- Program of All-Inclusive Care for the Elderly: Facility Licensing Exemption (**AFL 21-03**)
- AFL regarding annual announcement: online application period for Patient Needs Waiver and Workforce Shortage Waiver (**AFL 21-01**)
- CDSS Provider Information Notice (PIN) regarding a **Zoom webinar today**, Wednesday, **January 13, 2021, 1:15 PM – 2:55 PM** on **COVID-19 Vaccines: Steps for Success**
- PIN regarding benefits and impacts of the implementation of *Guardian* (**PIN 21-01-CCLD**)
- PIN providing information on Residential Alternate Care Sites to increase bed capacity due to anticipated surge in COVID-19 (**PIN 21-01-ASC**)

- PIN announcing Valley fever in Adult and Senior Care facilities (**PIN 21-03-ASC**)
- **Long-Term Care and Residential Care Facilities Sector telebriefing this Thursday, January 14, 2021, 2:00 – 3:00 pm**; learn about the San Diego County COVID-19 vaccine distribution rollout and COVID-19 variant strain.
- Older Adult and Disability Sector telebriefing this **Friday, January 15, 3:00 – 4:00 pm**.
- Community Care Licensing Division's infection prevention and control **Helpline** to speak to a clinician, M-F, 8 AM – 5 PM (excluding holidays):
  - **During business hours:** 1-844-538-8766 (Press #7 when prompted)
  - **After business hours, on weekends, and on holidays:** 1-833-498-2027

As a reminder, if you have a positive COVID-19 case at your facility, please report it by calling the County of San Diego Public Health Epidemiology Unit at (619) 692-8499 or (858) 565-5255 for after-hours or on the weekend. The County as well as your State licensing departments are here to support you.

For additional information, please see our website [www.coronavirus-sd.com/LTC](http://www.coronavirus-sd.com/LTC). Please email us at [moc.logs.hhsa@sdcounty.ca.gov](mailto:moc.logs.hhsa@sdcounty.ca.gov) if you need personal protective equipment.

Thank you for your continued efforts and partnership with the County of San Diego.



## Announcements and News



## COVID-19 Vaccine Resources for Long-Term Care Facilities

**Updated!** [County of San Diego to Open First “Vaccination Super Station”](http://www.VaccinationSuperStationSD.com) in partnership with UC San Diego Health, Padres and City of San Diego. Starting Monday, January 11, 2021, the **Vaccination Super Station** will be operating from 7 a.m. to 7 p.m. seven days a week for those who are eligible in **Phase 1A (Tier 1, 2 and 3)** who have made an **APPOINTMENT** online at [www.VaccinationSuperStationSD.com](http://www.VaccinationSuperStationSD.com).

### 1A-Tier 1 Vaccinating NOW

- Acute care, psychiatric, and correctional facility hospitals\*
- Skilled nursing facilities, assisted living facilities, and similar settings for older or medically vulnerable individuals

### 1A-Tier 2 Vaccinating NOW

- Intermediate care, for persons who need non-continuous nursing supervision, and supportive care
- Home healthcare and in-home supportive services
- Community health workers

### 1A-Tier 3 Vaccinating NOW

- Other settings and healthcare workers, including:
- Specialty clinics, laboratory workers, dental/oral health clinics, pharmacy staff not working in settings at higher tiers

## Things to Know Before You Go...

1. This is a drive-through vaccination event at Petco Park (Address: 1235 K St, San Diego, 92101; Entrance: Corner of K Street and 13<sup>th</sup> Street).
2. Expect to remain in your car for the duration of the visit. Please practice safety guidelines such as opening windows, hand sanitizing, wearing masks especially if you have more than one resident in a vehicle.
3. For **residents** of the facility: If your residents are able to be transported in a vehicle, please bring documentation of their residence at your facility (proof of residence at a long-term care facility). This can include a letter signed by the administrator or on-site lead **AND** a photo ID.
4. For **all staff**: At the time of your appointment, you must present an employee ID badge with your photo (or other valid documentation) that establishes you are a healthcare worker within eligible Phase 1A groups (Tiers 1-3).
  - Other documents accepted for healthcare work identification: Professional license **AND** a photo ID; or, a signed letter from your employer on facility letterhead **AND** a photo ID; or, a payment stub or timesheet from your healthcare employer or in-home supportive services **AND** a photo ID.
5. You will be required to **wear a mask** and adhere to **social distancing** guidelines for the duration of the visit.
6. After your vaccine has been administered, you will be asked to remain at the location for a **15-minute** observation period.

Stay informed about COVID-19 vaccination information by bookmarking the [County COVID-19 vaccine webpage](#). Information regarding how the COVID-19 vaccine works, safety, and phases of vaccine administration, and more can be found on this webpage.

## **NEW! California Health Alert Network San Diego, Health Advisory Update #22: COVID-19 Vaccine Update (January 8, 2021)**

- Two COVID-19 vaccines from Pfizer-BioNTech and Moderna have received Emergency Use Authorization (EUA) from the United States (U.S.) Food and Drug Administration (FDA) and have been recommended by the Centers for Disease Control and Prevention (CDC) Advisory Committee on Immunization Practices (ACIP).
- The California Department of Public Health (CDPH) is working closely with counties to plan the allocation and distribution of COVID-19 vaccine. The County has convened a COVID-19

Vaccine Clinical Advisory Group to provide additional local guidance, where applicable, and ensure equitable access to vaccines among affected populations.

- Due to limited vaccine supplies, allocation and distribution is taking place using a phased approach recommended by CDC/ACIP, with prioritization within each phase using a CDPH tier-based system.
- Healthcare personnel and residents and employees of long-term care facilities (LTCF) are prioritized to be vaccinated during Phase 1A.
- Facilities intending to administer COVID-19 vaccines must register in the State COVIDReadi system and monitor CDPH informational sources for updates. Prior to enrollment in COVIDReadi, facilities must be enrolled in the San Diego Immunization Registry (SDIR).
- Facilities unable to administer vaccine should fill out a notification form to ensure the County is aware and can offer vaccinations directly or through a partner.
- Healthcare providers play a critical role in educating patients about COVID-19 vaccines and helping them to understand the importance of vaccination and reinforcing the continued need for preventive measures such as mask-wearing, hand washing, and social distancing.

**Please see PDF attached** titled “CAHAN\_SD\_HealthAdvisory\_22\_Covid-19\_Vaccine Updat\_1-8-2021) for more information.

## **Long-Term Care Facility Resources**

The [Vaccination Toolkit for Long-term Care Facilities](#) is available on CDC’s website. For the LTC Vaccination Toolkit and all COVID-19 vaccination toolkits visit: [COVID-19 Vaccination Toolkits | CDC](#)

### **Importance of COVID-19 Vaccination for Residents of Long-term Care Facilities —**

This guidance has been updated to include long-term care consent information for COVID-19 vaccination. To learn more visit, [Vaccinating Long-Term Care Facility Residents](#).

**Post Vaccine Considerations for Residents —** While [this guidance](#) is intended for long-term care facilities, it could also be applied to patients in other healthcare settings. Considerations are based on the current understanding of signs and symptoms following COVID-19 vaccination, including timing and duration, and might change as experience with the vaccine accumulates.

### **Frequently Asked Questions about COVID-19 Vaccination in Long-Term Care Facilities**

**(LTCF) —** Making sure LTCF residents can receive COVID-19 vaccination as soon as vaccine is available will help save the lives of those who are most at risk of dying from COVID-19. CDC

updates [frequently asked questions](#) for Healthcare Infection Prevention and Control and Healthcare Professionals regularly based on feedback from professionals on the ground.

## CDC Pharmacy Partnership for Long-Term Care Program

The Centers for Disease Control and Prevention's Pharmacy Partnership for Long-Term Care Program partners with **CVS and Walgreens pharmacies** to provide on-site no-cost COVID-19 vaccinations.

The California Department of Public Health is activating Part A of the CDC Pharmacy Partnership, in which teams from many local CVS and Walgreens pharmacies plan to immunize thousands of California's Skilled Nursing Facilities that register to participate. Immunization began December 28, 2020.

For more information, please see the Pharmacy Partnership for Long-Term Care Program for COVID-19 Vaccination [FAQs](#). For specific questions, email [eocevent494@cdc.gov](mailto:eocevent494@cdc.gov)

### Other Resources:

- Information from the CDC about **COVID-19 Vaccination Planning**, [click here](#).
- View the CDC PowerPoint "What Clinicians Need to Know About the Pfizer-BioNTech COVID-19 Vaccine", [click here](#).



## California Department of Public Health

CDPH publishes news and All Facilities Letters (AFLs) regularly. If you would like to receive email notifications of AFLs, please submit your request to [LNCPolicy@cdph.ca.gov](mailto:LNCPolicy@cdph.ca.gov).

**NEW!** Letter to Skilled Nursing Facilities and Intermediate Care Facilities: [AFL 20-83.1](#) – January 12, 2021

This AFL supersedes AFL 20-83 and notifies SNFs and ICFs of the appellate court's decision in *California Advocates for Nursing Home Reform (CANHR), et al. v. Sonia Angell, Director of CDPH*, regarding the interdisciplinary team (IDT) process codified in Health and Safety Code section 1418.8. The AFL provides guidance and clarification to facilities regarding the court's decision pertaining to the IDT process. This AFL clarifies an IDT's authority to administer antipsychotic medications and create or change certain orders according to HSC section 1418.9. This AFL clarifies that a patient representative serving as part of the IDT must be unaffiliated with the facility.

**NEW!** Letter to Primary Care Clinics, Adult Day Health Centers, and Home Health Agencies: [AFL 21-03](#) – January 12, 2021



This AFL provides notification regarding implementation of Assembly Bill (AB) 1128 (Chapter 821, Statutes of 2019). AB 1128 exempts those facilities that exclusively serve Program of All-Inclusive Care for the Elderly (PACE) participants, or that serve individuals being assessed for PACE program eligibility, from licensure by the California Department of Public Health. Beginning January 1, 2021, the Department of Health Care Services will be solely responsible for regulating license-exempt PACE facilities.

**NEW!** Letter to Skilled Nursing Facilities: [AFL 21-01](#) – January 11, 2021

This AFL announces the opening of the application period for SNFs requesting Patient Needs Waiver and Workforce Shortage Waiver for fiscal year 2021-2022.

[Click here to see a full list of recent AFLs](#)



## California Department of Social Services

The Community Care Licensing Division (CCLD) of the California Department of Social Services (CDSS) publishes Provider Information Notices (PINs) to communicate important license related information to CCLD-licensed providers. The local San Diego Adult and Senior Care Regional Office can be reached at (619) 767-2300 or [CCLASCPSanDiegoRO@dss.ca.gov](mailto:CCLASCPSanDiegoRO@dss.ca.gov).

**NEW! PIN 21-02-ASC** announces a Zoom webinar with Adult and Senior Care licensees and their staff:

## COVID-19 Vaccines: Steps for Success Zoom Webinar

Wednesday, January 13, 2021

**1:15 PM – 2:55 PM** (updated time)

**Zoom Webinar Information:** Please click the link below to join the webinar:

<https://ucsf.zoom.us/j/98217850064?pwd=SEhRRkVkJW0zUnpFemtIVEltTUhKZz09>

**Passcode:** 684820

**Or iPhone one-tap:**

US: +16692192599,,98217850064#,,,,\*684820# or +16699006833,,98217850064#,,,,\*684820#

**Or Telephone:**

Dial (for higher quality, dial a number based on your current location):

US: +1 669 219 2599 or +1 669 900 6833 or +1 213 338 8477

**Webinar ID:** 982 1785 0064

**Passcode:** 684820

CCLD also encourages licensees and staff to view the [PowerPoint Presentation](#) available on the CCLD website while participating in the webinar.

**NEW! [PIN 21-01-CCLD](#)** (January 12, 2021) announces upcoming benefits and impacts with the implementation of a new background check data system, *Guardian*, to all Providers and Licensees.

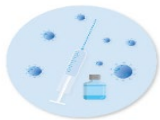
**NEW! [PIN 21-01-ASC](#)** (January 11, 2021) provides regarding contracts for Adult and Senior Care Residential Alternate Care Sites that were first announced in PIN-20-17-ASC, along with information on placement, services, operating requirements, and waivers for licensees to temporarily assist in caring for COVID-19 positive individuals.

**NEW! [PIN 21-03-ASC](#)** (January 8, 2021) provides information for the prevention, mitigation, and containment of Valley fever in Adult and Senior Care facilities based on the recommendations from the CDC and CDPH.

**[PIN 20-29-CCLD](#)** (12-21-20) announces a **Helpline** resource for providers to obtain information on infection prevention and control best practices. A CCLD clinician will be available M-F (excluding holidays) from 8:00 am – 5:00 pm to answer questions related to infection prevention and control.

- **During business hours:** 1-844-538-8766 (Press #7 when prompted)
- **After business hours, on weekends, and on holidays:** 1-833-498-2027

[Click here to browse the full list of recent PINs](#)



## Flu Vaccine Information

Protect Yourself! Your Loved Ones! Your Community! It's not too late to get a flu vaccine. Flu season is October – May.

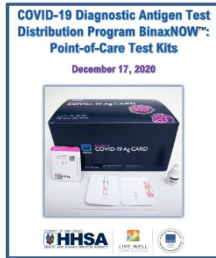
- [Flu vaccines available at County of San Diego Public Health Centers](#)
- [Champions for Health offers free flu vaccines throughout the County](#)



**Free On-Site  
Flu Vaccine Clinics**

Champions for Health

Champions for Health, a County of San Diego mass vaccination flu provider, is looking for senior nursing facilities, adult residential facilities, single living occupancies, and more to **provide free flu shots on site**. They bring all the materials, vaccine, and San Diego Immunization Registry staff to enter vaccination data in real time. They can provide needed medical volunteers if your medical staff can't help with vaccinations. Preference will be given to locations in COVID-19 hot spots and facilities serving a population that is high-risk for COVID-19. Contact [Andrew.Gonzalez@ChampionsFH.org](mailto:Andrew.Gonzalez@ChampionsFH.org) or text 213-550-9429. Complete an interest form [here](#).



## County of San Diego COVID-19 Diagnostic Antigen Test BinaxNOW Distribution Program

Access to the **Abbott BinaxNOW POC antigen tests** is being coordinated by the federal government and State through our local Medical Health Operational Area Coordinator local program within the County. Kits are now available in San Diego County for approved health care partners. These point-of-care (POC) antigen diagnostic tests detect the presence of the SARS-CoV-2 virus and can provide results in less than 20 minutes. Antigen tests have been added to the COVID-19 testing arena to meet the growing demand.

If you are interested in receiving these test kits, note a few of the **following requirements** which are listed in the attachment in further detail:

- Obtain (and attach) a Clinical Laboratory Improvement Amendments (CLIA) waiver
- Read and acknowledge responsibilities in the attached BinaxNOW Distribution Program
- Complete and sign the Appendix A – Organizational Checklist and Attestation and Staffing List for the BinaxNOW Antigen Test Kits
- Email completed and signed PDF [Checklist](#), [Attestation](#) AND [CLIA Waiver](#) to: [LOGS.TESTING.HHSA@sdcounty.ca.gov](mailto:LOGS.TESTING.HHSA@sdcounty.ca.gov) (incomplete forms delay delivery)
- Allow for a minimum of 48 hours for process and 2-3 days for delivery

Please direct program questions to the relevant point of contact below:

**Quick Reference Resources:**

Topic	Name	Contact Information
Application, Test Allotment and Shipments	CoSD MOC	<a href="mailto:LOGS.TESTING.HHSA@sdcounty.ca.gov">LOGS.TESTING.HHSA@sdcounty.ca.gov</a>



<b>Electronic Reporting of Test Results</b>	CoSD PUBLIC HEALTH Electronic Reporting On-boarding Team	<a href="mailto:Epi-CDReporting.HHSA@sdcounty.ca.gov">Epi-CDReporting.HHSA@sdcounty.ca.gov</a>
<b>CLIA related questions</b>	CDPH Laboratory Field Services	Call 510-620-3800 or <a href="mailto:LFSCC@cdph.ca.gov">LFSCC@cdph.ca.gov</a>
<b>Infectious Waste Disposal</b>	Department of Environmental Health	<a href="#">Hazardous Materials Duty Desk</a> at (858) 505-6880 Monday through Friday, from 8 am to 5 pm.
<b>Training</b>	Abbott (Manufacturer)	<a href="mailto:ts.scr@abbott.com">ts.scr@abbott.com</a> or call 1-800-257-9525. Training videos can be found <a href="#">here</a> .

**Helpful Documents for the BinaxNOW COVID-19 Test Kit** including

BinaxNOW COVID-19 Ag Healthcare Provider Fact Sheet, BinaxNOW COVID-19 Ag Patient Fact Sheet, Procedure Card and Package Insert [Click here](#).

For more information on the BinaxNOW Distribution Program, **please see the attached PDFs** titled “BinaxNOW Distribution Program 12 19 20 Final.2” and “BinaxNOW-Attestation and Trained Staff Table REQUIRED”



## State and Local Public Health Orders

**County of San Diego Order of the Health Officer (12/24/2020)**

- **Isolation** of All Persons with or Likely to Have COVID-19. Click [here](#).
- **Quarantine** of Persons Exposed to COVID-19. Click [here](#).

**County of San Diego Public Health Order (12/10/2020)** Click [here](#).

[Order of the State Public Health Officer-Hospital Surge \(1/5/2021\)](#)

[Accompanying Amendment \(1/6/2021\)](#)

[Regional Stay at Home Order](#) from the California Department of Public Health for the Southern California region, including San Diego County, has been extended. For more information, visit the [County News Center](#).



### Upcoming Telebriefings



Telebriefing for the **Long-Term Care and Residential Care Facilities Sector**

**WHEN:** Beginning January 2021, telebriefings will be held the 2<sup>nd</sup> and 4<sup>th</sup> Thursdays of the month from 2:00 – 3:00 PM.

**Thursday,  
January 14  
at 2:00 PM**

[Zoom Meeting Link](#)

[Submit Telebriefing Questions](#)

**Option 1- Computer (*preferred*):**

Click on the following link using your computer

<https://us02web.zoom.us/j/82620098291?pwd=WHh2ZGVzc3FhSWVFMlFeGpjVlg5Zz09>.

**Meeting ID:** 826 2009 8291

**Password:** 242111

**Option 2- Phone (*listen-in only*):**

Call into the meeting: 1 (669) 900-6833

**Meeting ID:** 826 2009 8291

**Password:** 242111

Visit the **Long-Term Care and Residential Care Facilities** sector [webpage](#)



Telebriefing for the **Older Adult and Disability Sector**

**WHEN:** Beginning January 2021, telebriefings will be held on the 3<sup>rd</sup> Friday of the month from 3:00 – 4:00 PM.

**Friday,  
January 15  
at 3:00 PM**

[Zoom Meeting Link](#)

[Submit Telebriefing Questions](#)

Visit the **Older Adult and Disability Sector** support [webpage](#).



## Ongoing Programs, Services, and Resources



### County of San Diego Coronavirus Disease 2019

For up-to-date local information on COVID-19 within the County of San Diego, visit



### COVID-19 Testing Information & Resources

For testing locations or to make an appointment at a drive-up location, visit the



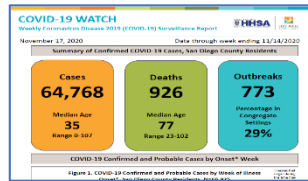
### CDC Infection Control Resources

CDC Guidance and Resources for Infection Control in Facilities



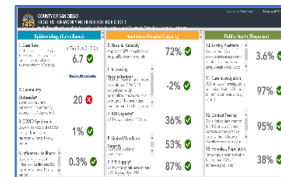
### Case Rates by Zip Code

To view an interactive COVID-19 case rates by ZIP code map, [CLICK HERE](#)



### COVID-19 Watch Surveillance Report

County of San Diego COVID-19 Dashboard and Weekly Report [CLICK HERE](#)



### Triggers Dashboard: Testing Positivity Rate

The frequency of routine testing of skilled nursing facility staff depends on the San Diego County Positivity Rate. [View the current Positivity Rate here](#) (Item #10: Testing Positivity)



### 2-1-1 San Diego

For general health questions about COVID-19, community resources, or if you are uninsured, dial 2-1-1

[2-1-1 San Diego](#)



### Live Well @ Home

Interested in free resources, tips, and strategies to stay healthy in both mind and body while staying at home?

[CLICK HERE](#)



### Questions?

For questions related to long-term care and residential care facilities, please email:

[COVID-LTC@sdcounty.ca.gov](mailto:COVID-LTC@sdcounty.ca.gov)



## Stay Connected



For questions related to long-term care and residential care facilities, please email: [COVID-LTC@sdcounty.ca.gov](mailto:COVID-LTC@sdcounty.ca.gov).



Text **COSD COVID-19** to **468-311** to get text alert updates from the County of San Diego.





To: CAHAN San Diego Participants  
Date: January 8, 2020  
From: Public Health Services

## Health Advisory Update #22: Coronavirus Disease 2019 (COVID-19) Vaccine Update

### Key Messages

- Two COVID-19 vaccines from Pfizer-BioNTech and Moderna have received Emergency Use Authorization (EUA) from the United States (U.S.) Food and Drug Administration (FDA) and have been recommended by the Centers for Disease Control and Prevention (CDC) Advisory Committee on Immunization Practices (ACIP).
- The California Department of Public Health (CDPH) is working closely with counties to plan the allocation and distribution of COVID-19 vaccine. The County has convened a COVID-19 Vaccine Clinical Advisory Group to provide additional local guidance, where applicable, and ensure equitable access to vaccines among affected populations.
- Due to limited vaccine supplies, allocation and distribution is taking place using a phased approach recommended by CDC/ACIP, with prioritization within each phase using a CDPH tier-based system.
- Healthcare personnel and residents and employees of long-term care facilities (LTCF) are prioritized to be vaccinated during Phase 1A.
- Facilities intending to administer COVID-19 vaccines must register in the State COVIDReadi system and monitor CDPH informational sources for updates. Prior to enrollment in COVIDReadi, facilities must be enrolled in the San Diego Immunization Registry (SDIR).
- Facilities unable to administer vaccine should fill out a notification form to ensure the County is aware and can offer vaccinations directly or through a partner.
- Healthcare providers play a critical role in educating patients about COVID-19 vaccines and helping them to understand the importance of vaccination and reinforcing the continued need for preventive measures such as mask-wearing, hand washing, and social distancing.

### Situation

- Multiple COVID-19 vaccines are currently in clinical trials, and the U.S. FDA has granted EUA to the [Pfizer-BioNTech \(12/11/20\)](#) and [Moderna \(12/18/20\)](#) vaccines.
- Advisory Committee on Immunization Practices (ACIP) issued interim recommendations for the use of the [Pfizer-BioNTech](#) and [Moderna](#) vaccines, and both vaccines are already being allocated and distributed by CDC to the region.
- California Department of Public Health (CDPH) is working closely with local health jurisdictions to plan the allocation and distribution of COVID-19 vaccine. The County of San Diego has convened a [COVID-19 Vaccine Clinical Advisory Group](#), consisting of public health officials and community and clinical partners, to provide local guidance, where applicable, and to use a health equity lens to ensure equitable distribution of vaccine in the region.
- Due to limited initial vaccine supply, [a phased approach](#) to vaccine allocation will be taken. Phases were initially determined by the National Academies of Sciences (NAS) in their [Framework for Equitable Allocation of Vaccine for Novel Coronavirus](#). ACIP modified NAS phases for allocation of COVID-19 vaccine that will be used to guide vaccine allocations in California and elsewhere.

- **Phase 1A** is the initial phase of the national vaccination program and includes [healthcare personnel](#) and residents of Long Term Care Facilities, based on [ACIP's Interim Recommendations for Allocating Initial Supplies of COVID-19 Vaccine](#).
- CDPH formed a [Scientific Safety Review Workgroup](#) to assess the national recommendations and develop vaccine prioritization and allocation guidance for California. This workgroup presented a framework for tiered sub-prioritization within ACIP-recommended Phase 1A to better match the level of available supplies with demand. CDPH also has convened a [Drafting Guidelines Workgroup](#) that recommends tiers to the State's [Community Vaccine Advisory Committee](#). CDPH published [Allocation Guidelines for COVID-19 Vaccine During Phase 1A](#) that divide intended Phase 1A vaccine recipients into three tiers, each of which includes categories of persons to receive vaccine in ranked order. These include:
  - **Tier 1:**
    - Staff at acute care, psychiatric, and correctional facility hospitals
    - Staff and residents of skilled nursing facilities, assisted living facilities, and similar settings for older or medically vulnerable individuals
    - Paramedics, emergency medical technicians, and others providing emergency medical services
    - Staff at dialysis centers
    - Staff of residential substance use disorder (SUD) and behavioral health facilities
  - **Tier 2:**
    - Staff at intermediate care facilities for persons who need non-continuous nursing supervision and supportive care
    - Staff of home health care and in-home support services
    - Community health workers, including promotoras
    - Public health field staff
    - Staff at primary care clinics, including federally qualified health centers, rural health centers, correctional facility clinics, and urgent care clinics
    - Staff of outpatient SUD treatment and behavioral health facilities
  - **Tier 3:**
    - Staff at specialty clinics
    - Laboratory workers
    - Staff at dental and other oral health clinics
    - Pharmacy and other healthcare staff not working in settings at higher tiers
- **Phase 1B** Tier 1 includes persons aged 75 years and older and those at risk of exposure at work in the following sectors: education and childcare workers, food and agricultural workers, and emergency service workers (e.g., firefighters and police officers).
- **Phase 1B** Tier 2 includes persons aged 65-74 years, persons in congregate settings with outbreak risk: incarcerated and homeless, and those at risk of exposure at work in the following sectors: transportation and logistics; industrial, commercial, residential, and sheltering facilities and services; critical manufacturing.
- **Phase 1C** includes persons 50-64 years, persons 16-64 years with medical conditions that increase risk for severe COVID-19; and those at risk of exposure at work in the following sectors: water and wastewater; defense, energy; chemical and hazardous materials; communications and IT; financial services; government operations/community-based essential functions.
- **Phase 2** includes general population 16 years of age and older.

### **Actions Requested**

- [Enroll to become a COVID-19 vaccine provider if able to meet requirements](#). Hospitals, pharmacies, and clinics interested in administering COVID-19 vaccine must be enrolled in the federal COVID-19 Vaccination Program. Vaccines and ancillary supplies will be procured and distributed by the federal government at no cost to enrolled, approved COVID-19 vaccination providers. CDPH coordinates enrollment for the region and as per CDPH and the [Department of Consumer Affairs](#), allocated vaccines must be administered consistent with the Phase and Tier structure.



- **Apply online through [COVIDReadi](#)**, CDPH’s registration and enrollment system.
- **If you are not already enrolled in the San Diego Immunization Registry (SDIR), e-mail [SDIR.HHSA@sdcounty.ca.gov](mailto:SDIR.HHSA@sdcounty.ca.gov), or call the SDIR Help Desk at (619) 692-5656 for assistance.** Potential vaccination sites must be enrolled in SDIR.
- For questions about the enrollment process or to request technical assistance, e-mail [COVIDVaxEnrollment.HHSA@sdcounty.ca.gov](mailto:COVIDVaxEnrollment.HHSA@sdcounty.ca.gov), or call (858) 569-3300.
- Providers should count eligible persons and doses in advance before thawing or removing from storage AND create standby lists of prioritized persons in the same Phase and preferably same or subsequent Tier when possible should there be unused doses.
- Providers who have extra doses should consult immediately with [covidvaxinquiry.hhsa@sdcounty.ca.gov](mailto:covidvaxinquiry.hhsa@sdcounty.ca.gov) and provide as much advance notice regarding doses that may be expiring.
- **Submit a [NOTIFICATION FORM](#) if you are a healthcare facility unable to administer COVID–19 vaccination.** This form provides information to the County’s COVID–19 Vaccine Branch to be notified when vaccines become available to you.
- **Stay updated with the latest COVID-19 vaccine information** by regularly reviewing and monitoring educational resources available through CDC, CDPH, and the County of San Diego.
  - CDC/ACIP:
    - [COVID-19 Vaccination website](#)
    - [Interim Clinical Considerations for Use of mRNA Vaccines Currently Authorized](#)
    - [COVID-19 Vaccination Training Programs and Reference Materials for Healthcare Professionals](#)
    - [ACIP COVID-19 Vaccine Recommendations](#)
  - CDPH:
    - [COVID-19 Vaccines website](#)
    - [California COVID-19 Vaccination Program](#)
    - [COVID-19 Vaccines Questions and Answers \(Q&A\)](#)
  - County of San Diego:
    - [COVID-19 Vaccine website](#)
    - [Information for Healthcare Professionals](#)
- **Educate patients** regarding the importance of COVID-19 vaccination, including the rigorous evaluation and safety of the two COVID-19 vaccines that are currently approved for EUA, and the continued need for other preventive measures such as mask-wearing, hand washing, and social distancing. Resources that may be helpful for these discussions include:
  - [CDC COVID-19 Vaccination Recipient Education website](#)
  - [CDC Understanding and Explaining mRNA COVID-19 Vaccines](#)
  - [CDC Making a Strong Recommendation for COVID-19 Vaccination](#)
  - [CDC Answering Patients’ Questions](#)
  - [County of San Diego Coronavirus Disease 2019 Information for Health Professionals](#)

We are all in this together! To support the current statewide effort to vaccinate as many healthcare personnel, as quickly as possible, all Tiers of Phase 1A are open in January, following with Phase 1B. Thank you for your continued participation.

### CAHAN San Diego

County of San Diego Health & Human Services Agency

Epidemiology and Immunization Services Branch

Secure Website: <https://member.everbridge.net/892807736722952/login>

Phone: (619) 692-8499; Fax: (858) 715-6458

Urgent Phone for pm/weekends/holidays: (858) 565-5255

E-mail: [cahan@sdcounty.ca.gov](mailto:cahan@sdcounty.ca.gov)

Public Website: <http://www.cahansandiego.com>