



CORONAVIRUS
DISEASE 2019

(COVID-19)

WEEKLY UPDATE

LONG-TERM CARE AND RESIDENTIAL CARE FACILITIES

Friday, April 23, 2021

Greetings Long-Term Care and Residential Care Facilities of San Diego County,

Please find information below regarding the latest guidance and resources from county, state, and federal organizations, including **new updates**:

- **PowerPoint Slides:** Long-Term Care (LTC) Telebriefing on April 22, 2021
 - Jennifer Wheeler, County of San Diego, **LTC COVID-19 Updates**
 - Alex Vo, Community Care Licensing Division, **PIN 21-21-ASC Overview**
 - For the **telebriefing recording**, please [click here](#)

- **California Department of Public Health (CDPH)**
 - **CDPH Health Advisory** (April 21, 2021): Pause in administration of the Johnson & Johnson COVID-19 vaccine; Reporting of cases of thrombosis with thrombocytopenia syndrome after receipt of Johnson & Johnson vaccine

- **California Department of Social Services, Community Care Licensing Division**
Provider Information Notices (PINs):
 - [PIN 21-23-ASC](#) provides updated **quarantine** and **isolation guidance** for facility staff during the COVID-19 pandemic
 - [PowerPoint slides](#): CCLD Informational Call on April 21, 2021, "COVID-19 Infection Control: Further Guidance on Visitation, Outings, Dining, and Social Activities + Adult Day Program"

- **Telebriefing date changes in May:** our telebriefings in May will be held on **Thursday, May 6, and Thursday, May 20, 2:00 – 3:00 PM** (1st and 3rd Thursday of the month for May only; usually held on the 2nd and 4th Thursdays). Thank you for your flexibility.
- **Reminder:** If you are experiencing vaccine hesitancy from staff or residents at your facility, we have a team comprised of doctors and nurses who are available to provide an educational session/presentation on vaccine effectiveness and confidence. If you would like to request this, please email us at COVID-LTC@sdcounty.ca.gov.

As a reminder, if you have a positive COVID-19 case at your facility, please report it by calling the County of San Diego Public Health Epidemiology Unit at (619) 692-8499 or (858) 565-5255 for after-hours or on the weekend. The County as well as your State licensing departments are here to support you.

Please email us at moc.logs.hhsa@sdcounty.ca.gov if you need personal protective equipment. For other questions, please feel free to email us at COVID-LTC@sdcounty.ca.gov or visit our webpage at www.coronavirus-sd.com/LTC.

Thank you for your continued efforts and partnership with the County of San Diego!



Announcements and News

PowerPoint Slides

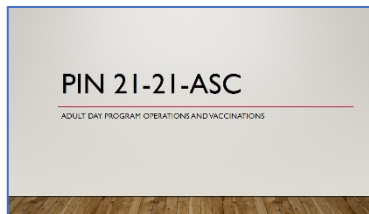
Long-Term Care & Residential Care Facilities Telebriefing

April 22, 2021



NEW: Jennifer Wheeler, County of San Diego, **COVID-19 Update**

Please see attached PDF titled
“LTC_COVID19_Updates_4_22_21”



NEW: Alex Vo, Community Care Licensing Division **PIN 21-21-ASC Overview**

Please see attached PDF titled
“CCLD_LTC_PIN 21_21_ASC_Overview”



California Health Alert Network San Diego Health Advisory Updates

Health Advisory Update #31: Coronavirus Disease 2019 (COVID-19) Vaccine

Adverse Events and Update – April 15, 2021

Key Messages:

- The Centers for Disease Control and Prevention (CDC) has provided clinical information on Cerebral Venous Sinus Thrombosis (CVST) following vaccination with the Johnson & Johnson (Janssen) COVID-19 vaccine.
- Advisory Committee on Immunization Practices voted to continue a [pause in the use of the Janssen vaccine](#).
- A Clinician Outreach and Communication Activity occurred on April 15, 2021 (*recording available [here](#)*).

For more information, please see the **attached PDF** titled “CAHAN+COVID-19+Vaccine+Update+4-15-21”



California Department of Public Health

CDPH publishes news and All Facilities Letters (AFLs) regularly. If you would like to receive email notifications of AFLs, please submit your request to LNCPolicy@cdph.ca.gov.

NEW: CDPH Health Advisory (April 21, 2021): Pause in administration of the Johnson & Johnson COVID-19 vaccine; Reporting of cases of thrombosis with thrombocytopenia syndrome after receipt of Johnson & Johnson vaccine. **Please see PDF attached** “CAHAN+TTS+reporting+042121”

[AFL 20-22.7](#) to Long-Term Care Facilities– April 16, 2021

- Notifies long-term care (LTC) facilities of the Centers for Medicare and Medicaid Services (CMS) and Centers for Disease Control and Prevention (CDC) guidance for improving their infection control and prevention practices to prevent the transmission of COVID-19, including guidance for visitation
- Authorizes LTC facilities to temporarily modify their facility’s visitation policies in accordance with CMS and CDC COVID-19 guidance when necessary to protect the health and safety of residents, staff and the public

- Provides CDPH's visitation guidance for expanded opportunities for indoor in-room visitation and physical touch and infection control measures for fully vaccinated residents and visitors
- Includes additional guidelines for pediatric residents

[CDPH COVID-19 Toolkit](#) serves as a one-stop-shop for partners to access materials available for download and sharing in support of outreach and education. This toolkit has numerous videos, social media messages, infographics, handouts, fact sheets, and more.

[Click here to see a full list of recent AFLs](#)

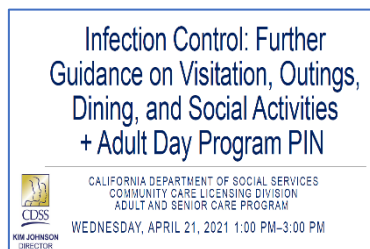


California Department of Social Services

The Community Care Licensing Division (CCLD) of the California Department of Social Services (CDSS) publishes Provider Information Notices (PINs) to communicate important license related information to CCLD-licensed providers. The local San Diego Adult and Senior Care Regional Office can be reached at (619) 767-2300 or

CCLASCPSanDiegoRO@dss.ca.gov.

NEW: [PIN 21-23-ASC](#) (April 20, 2021) provides updated quarantine and isolation guidance to Adult and Senior Care licensees with facility staff who are fully vaccinated, facility staff who were exposed to a person with COVID-19, and facility staff who test positive for COVID-19. In addition, this PIN provides infection control practices for facility staff to safely commute to work.



NEW: [PowerPoint Slides](#) (April 21, 2021) from the Informational Call Regarding COVID-19 Infection Control: Further Guidance on Visitation, Outings, Dining, and Social Activities + Adult Day Program [PIN 21-22-ASC](#)

[PIN 21-21-ASC](#) (April 15, 2021) addresses the Community Care Licensing Division support for Adult Day Programs to operate during the COVID-19 pandemic and provides information on COVID-19 vaccinations.

[PIN 21-20-ASC](#) (April 15, 2021) provides further information about how Adult and Senior Care residential licensees, facility staff, and residents can access the COVID-19 vaccine. Please note, now that the Pharmacy Partnership for Long-Term Care Program has concluded, the [Federal Retail Pharmacy Program for COVID-19 Vaccination](#) has been activated. This program includes 21 participating national pharmacy partners that provide COVID-19 vaccinations at

retail pharmacy locations. There are also [Long-term Care Pharmacies](#) distributing the COVID-19 vaccine through this program. This program may be a way licensees can arrange for participating pharmacies to provide vaccinations on-site at their facilities. **Please contact the nearest long-term care pharmacy directly to understand which services they are able to offer.**

Updated: Some pharmacies in San Diego include:

1. **Guardian Pharmacy Services**, contact cvsr@guardianpharmacy.net
2. **SNP Pharmacy, LLC**, contact vaccines@snp-rx.com
3. **Pharmerica**, contact ImmunizeLTC@pharmerica.com

For the complete list of participating pharmacies, please [click here](#).

[PIN 21-05 CCLD](#) (April 13, 2021) introduces a new website to assist with checking on applicant's background check status.

[PIN 21-19-ASC](#) (April 2, 2021) provides guidance to Adult and Senior Care Program Licensees on COVID-19 prevention and mitigation strategies for **persons in care with dementia** and [Click here to browse the full list of recent PINs](#)



County of San Diego COVID-19 Diagnostic Antigen Test BinaxNOW Distribution Program

Reminder: Access to the **Abbott BinaxNOW POC antigen tests** is being coordinated by the federal government and State through our local Medical Health Operational Area Coordinator local program within the County. Kits are available in San Diego County for approved health care partners. These point-of-care (POC) antigen diagnostic tests detect the presence of the SARS-CoV-2 virus and can provide results in less than 20 minutes. Antigen tests have been added to the COVID-19 testing arena to meet the growing demand.

If you are interested in receiving these test kits, note a few of the **following requirements** which are listed in the attachment in further detail:

- Obtain (and attach) a Clinical Laboratory Improvement Amendments (CLIA) waiver
- Read and acknowledge responsibilities in the attached BinaxNOW Distribution Program
- Allow for a minimum of 48 hours for process and 2-3 days for delivery

For more detailed information, please [click here](#).

Please email moc.logs.hhsa@sdcounty.ca.gov for more information.



FEMA

COVID-19 Funeral Assistance

The Federal Emergency Management Agency (FEMA) will provide financial assistance for COVID-19-related funeral expenses (up to \$9,000 per funeral and a maximum of \$35,000 per application) incurred after January 20, 2020. FEMA is accepting applications for Funeral Assistance through their dedicated call center: **844-684-6333** | TTY: **800-462-7585**

Fraud Alert: A [Consumer Alert](#) from the Federal Trade Commission has issued points to know below:

- FEMA will **not** contact you until you have called FEMA or have applied for assistance.
- The government will **not** ask you to pay anything to get this financial help.
- The government will **not** call, text, email, or contact you on social media and ask for your Social Security, bank account, or credit card number.
- Do **not** give your own or your deceased loved one's personal or financial information to anyone who contacts you out of the blue.

Please see FEMA's webpage [COVID-19 Funeral Assistance](#) and FEMA's [Funeral Assistance FAQs](#) for more information.



Early Treatment for COVID-19 is Available at the Monoclonal Antibody Regional Center (MARC)

Reminder:

- Monoclonal antibodies have been shown in [clinical trials](#) to reduce COVID-19-related hospitalization and emergency room visits.
- The [Monoclonal Antibody Regional Center](#) is open to treat mild to moderate COVID-19 in adults and pediatric patients (12 years of age and older weighing at least 40 kg) with positive results of PCR or Rapid Antigen SARS-CoV-2 testing, and who are at high risk for progressing to severer COVID-19 and/or hospitalization. Treatment should be administered as soon as possible after positive results of SARS-CoV-2 testing, and within 10 days of symptom onset.
- **Escondido Location:** Palomar Medical Center Downtown, 555 East Valley Parkway, Escondido, CA 92025; open seven days a week from 8:00 AM to 8:00 PM

- **New Site: Chula Vista Location:** Another MARC site opened on Monday, **April 19, 2021 at San Ysidro Health, 391 Oxford Street, Chula Vista, CA 91911** (in the former Chula Vista Fire Station #5 building); open seven days a week from 8:00 AM to 5:00 PM
- Phone number is the same for both sites: **619-685-2500**
- Treatment is available at **no-cost** to those who live or work in San Diego County, regardless of health insurance or immigration status.

For questions, please email COVIDtreatment@sdcounty.ca.gov. For additional information, please visit www.sandiegocounty.gov/COVIDHealthProfessionals.

Please click on patient flyer links for more information:

[MARC Patient Flyer \(English\)](#), [MARC Patient Flyer \(Spanish\)](#)



Centers for Disease Control and Prevention Guidelines for Fully Vaccinated Individuals to Safely Visit with Others

The Centers for Disease Control and Prevention guidance for vaccinated individuals and visitation – March 8, 2021. Please note, this is not intended for healthcare personnel or congregate settings. For more information, please see [CDC Issues First Set of Guidelines on How Fully Vaccinated People Can Visit Safely with Others | CDC Online Newsroom | CDC](#).

It is recommended to **follow the strictest guidance** when there is a discrepancy. Please always consult with your local licensing staff if you have questions.



Centers for Medicare & Medicaid Services Visitation Guidance for Skilled Nursing Facilities

The Centers for Medicare & Medicaid Services revised Skilled Nursing Facilities visitation guidance – March 10, 2021. For details, please see [QSO-20-39-NH Revised \(cms.gov\)](#)

It is recommended to **follow the strictest guidance** when there is a discrepancy. Please always consult with your local licensing staff if you have questions.



County of San Diego Public Health Orders

Updated 4/7/21: County of San Diego [Public Health Order](#) Please note, section 15a (page 7), which refers to visitors and non-essential personnel, has not changed. Visitation aligns with and will defer to the most recent guidance by CDPH and CDSS.

County of San Diego [Order of the Public Health Officer - Quarantine of Persons Exposed to COVID-19](#) (4/5/2021): Please note, this guidance is for fully vaccinated and unvaccinated individuals and references healthcare workers and those in congregate settings.



California COVID-19 Vaccination Program Update Federal Retail Pharmacy Program Activation

The Federal Retail Pharmacy Program has been activated and some pharmacy partners include **CVS, Rite Aid, Walgreens, and Albertsons**. Target population includes people 65+ and healthcare workers. Appointments will be required. Eligible Californians should not contact individual stores for appointments or come to the store seeking a vaccination without an appointment. Eligible individuals should be directed to the following scheduling links below for an appointment:

CVS: <https://www.cvs.com/immunizations/covid-19-vaccine>

Rite Aid: <https://www.riteaid.com/pharmacy/covid-qualifier>

Walgreens: <https://www.walgreens.com/topic/promotion/covid-vaccine.jsp>

Albertsons: <https://www.albertsons.com/pharmacy/covid-19.html>

Additionally for CVS only, appointment can also be scheduled via CVS pharmacy app and eligible individuals without internet access can call **CVS at 800-746-7287** for assistance on scheduling.

For questions, please email: COVIDvaccinePharm@cdph.ca.gov

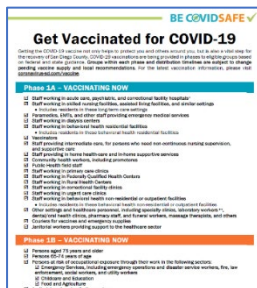


COVID-19 Helpful Hotlines

- **Public COVID-19 Call Center:** 1-833-422-4255, Monday-Friday 8:00 AM – 8:00 PM; Saturday and Sunday 9:00 AM – 5:00 PM, for general questions about COVID-19, including vaccines, scheduling vaccination appointments through My Turn, return to school, testing, and more.
- **My Turn Call Center:** 1-833-422-4255 for Californians to sign up for a notification when it's their turn to get a vaccine.
- **Community Care Licensing Division Helpline:** A CCLD clinician will be available Monday – Friday (excluding holidays) during business hours of 8:00 AM – 5:00 PM to answer questions related to infection prevention and control. Additionally, a voicemail system is available for leaving a message after business hours, on weekends, and on holidays. **During business hours:** 1-844-538-8766 (Press #7 when prompted); **After business hours, on weekends, and on holidays:** 1-833-498-2027



COVID-19 Vaccine Resources for Long-Term Care Facilities



Updated: As of April 15, 2021, the general population 16 years of age and older is eligible for the COVID-19 vaccination.

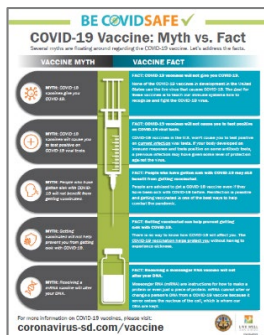
- [Know Your Vaccination Phase \(English\)](#)
- [Know Your Vaccination Phase \(Spanish\)](#)

Also, please continue to share the County [COVID-19 Vaccine webpage for appointments](#) with your staff and ambulatory residents.

Transportation- If you are aware of staff, ambulatory residents, and/or their family members who may need transportation to a vaccination site, the Metropolitan Transit System and North County Transit District are offering **free rides** for everyone in the region who needs a lift **to their vaccine appointment**. Ride any bus, trolley, SPRINTER or COASTER for FREE with proof of vaccine appointment. For more information, visit the [MTS webpage](#).

COVID-19 vaccine presentations are available through the *Live Well San Diego* [Speaker's Bureau](#) that provides free presentations delivered by volunteer medical professionals, including

doctors and nurses, who are subject matter experts. Fill out an [online interest form](#) on our *Live Well San Diego* website to request a presentation.



COVID-19 Vaccine Myth vs. Fact handouts are available in English and Spanish.

Please click link below for the flyer:

[COVID-19 Vaccine – Myth vs. Fact \(English/Spanish\)](#)

Reminder: Please check out the County's webpage with COVID-19 educational materials in different languages. Please [click here](#) and scroll down the list of options in Spanish, Tagalog, Arabic, Aramaic, Chinese, Farsi, Japanese, Vietnamese, Korean, and more. The County COVID-19 [Information and Resources in Other Languages](#) webpage is a great resource.

Stay informed about COVID-19 vaccination information by bookmarking the [County COVID-19 vaccine webpage](#). Information regarding how the COVID-19 vaccine works, safety, and phases of vaccine administration, and more can be found on this webpage.

COVID-19 Vaccine Community Conversation Toolbox

The County of San Diego has created the [COVID-19 Vaccine Community Conversation Toolbox](#). This toolbox is primarily for healthcare workers (doctors and nurses who have been identified as trusted messengers of COVID-19 vaccine information) to have conversations about the COVID-19 vaccine. Fact sheets, links to important websites, handouts (English and Spanish), and Frequently Asked Questions are included.

CDC Vaccine Considerations

Please [click here](#) for some CDC vaccine considerations.

1. Both mRNA vaccines require a 2nd dose: Pfizer at 21 days and Moderna at 28 days
2. The second dose should NOT be administered any sooner than 21 days (Pfizer) or 28 days (Moderna)
3. The second dose of both mRNA vaccines may be administered up to 6 weeks after the first dose

Long-Term Care Facility Resources

Post Vaccine Considerations for Residents — While [this guidance](#) is intended for long-term care facilities, it could also be applied to patients in other healthcare settings. Considerations are

based on the current understanding of signs and symptoms following COVID-19 vaccination, including timing and duration, and might change as experience with the vaccine accumulates.

Frequently Asked Questions about COVID-19 Vaccination in Long-Term Care Facilities

(LTCF) — Making sure LTCF residents can receive COVID-19 vaccination as soon as vaccine is available will help save the lives of those who are most at risk of dying from COVID-19. CDC updates [frequently asked questions](#) for Healthcare Infection Prevention and Control and Healthcare Professionals regularly based on feedback from professionals on the ground.

The [Vaccination Toolkit for Long-term Care Facilities](#) is available on CDC's website.

Importance of COVID-19 Vaccination for Residents of Long-term Care Facilities —

This guidance has been updated to include long-term care consent information for COVID-19 vaccination. To learn more visit, [Vaccinating Long-Term Care Facility Residents](#).



Upcoming Telebriefings



**Thursday,
May 6
at 2:00 PM**

Telebriefing for the **Long-Term Care and Residential Care Facilities Sector**

WHEN: In May, our telebriefings will be held on **Thursday, May 6, and Thursday, May 20**, 2:00 – 3:00 PM (1st and 3rd Thursday of the month for May only; usually held on the 2nd and 4th Thursdays). Thank you for your flexibility.

[Zoom Meeting Link](#)

[Submit Telebriefing Questions](#)

Visit the **Long-Term Care and Residential Care Facilities** sector [webpage](#)



**Friday,
May 21
at 3:00 PM**

Telebriefing for the **Older Adult and Disability Sector**

WHEN: Telebriefings will be held on the 3rd Friday of the month from 3:00 – 4:00 PM.

[Zoom Meeting Link](#)

[Submit Telebriefing Questions](#)

Visit the **Older Adult and Disability Sector** [webpage](#).



Ongoing Programs, Services, and Resources



County of San Diego Coronavirus Disease 2019

For up-to-date local information on COVID-19 within the County of San Diego, visit

www.coronavirus-sd.com



COVID-19 Testing Information & Resources

For testing locations or to make an appointment at a drive-up location, visit the

[Testing in San Diego County webpage.](#)



CDC Infection Control Resources

CDC Guidance and Resources for Infection Control in Facilities

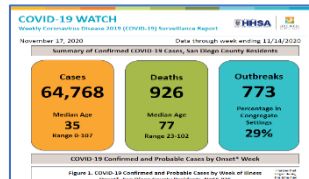
[CLICK HERE](#)



Case Rates by Zip Code

To view an interactive COVID-19 case rates by ZIP code map,

[CLICK HERE](#)



COVID-19 Watch Surveillance Report

County of San Diego COVID-19 Dashboard and Weekly Report

[CLICK HERE](#)

Facility Name	Testing Positivity Rate	Target
11111111	6.7%	72%
11111112	20%	2%
11111113	1%	36%
11111114	0.3%	53%
11111115		87%
11111116		97%
11111117		95%
11111118		38%

Triggers Dashboard: Testing Positivity Rate

The frequency of routine testing of skilled nursing facility staff depends on the San Diego County Positivity Rate.

[View the current Positivity Rate here](#) (Item #10: Testing Positivity)



2-1-1 San Diego

For general health questions about COVID-19, community resources, or if you are uninsured, dial 2-1-1

[2-1-1 San Diego](#)



Live Well @ Home

Interested in free resources, tips, and strategies to stay healthy in both mind and body while staying at home?

[CLICK HERE](#)



Questions?

For questions related to long-term care and residential care facilities, please email:

COVID-LTC@sdcounty.ca.gov



Stay Connected



For questions related to long-term care and residential care facilities, please email: COVID-LTC@sdcounty.ca.gov.

Visit the Long-Term Care and Residential Care Facilities sector support [webpage](#)



Text **COSD COVID-19** to **468-311** to get text alert updates from the County of San Diego.

