



Our Speakers:

JENNIFER M. TUTEUR, MD
County of San Diego
Deputy Chief Medical Officer



GARY JOHNSTON
County of San Diego
Chief Resilience Officer
Planning Lead for Reopening



Wednesday, June 3, 2020

Faith-Based Organization Telebriefing 1pm – 2pm

County of San Diego
Health and Human Services Agency



DEVELOPING YOUR COVID-19 SAFE *REOPENING PLAN*

FAITH-BASED ORGANIZATION SECTOR

Updated June 3, 2020



RESOURCE DOCUMENTS

1. California Department of Public Health COVID-19 Industry Guidance: Places of Worship and Providers of Religious Services and Cultural Ceremonies
2. County Public Health Order
3. Safe Reopening Plan



SAFE REOPENING PLAN

Business Name: _____

Facility Address: _____

This plan does not need to be submitted at this time. This plan is to be used to prepare when businesses open per the Governor's Order. The County will not require approval for this plan. Please check back for further information on 6/16/2020.

Businesses must implement all C and D below and be prepared to provide specific detail



A. Signage (Mandatory):

☐ Signage at each public entrance to the facility if from one another; an

☐ Signage posting a cop

B. Measures To Protect Employees

☐ Teleworking opportunity

☐ All employees have breaks

☐ All employees must be allowed in workplace if shortness of breath

☐ All employees must wear masks

☐ All desks or individual workstations

☐ Break rooms, bathrooms

☐ Personal Protective Equipment (describe below)

NICK MACCHIONE, FACHE

AGENCY DIRECTOR

Pursuant to California Health Officer of the County of San Diego

Effective 12:00 a.m. on _____ will be in effect for San Diego County

1. All persons are to remain at home or customers travel activities as defined activity as allowed
2. All public or private facilities
3. All businesses not listed below are referred closed for the duration comply with the requirements business may remain including by telecommunication
4. All public or private facilities where students colleges and universities workers. Parents of students in activities prohibited



County of San Diego




COVID-19 INDUSTRY GUIDANCE:

Places of Worship and Providers of Religious Services and Cultural Ceremonies

May 25, 2020

covid19.ca.gov



Using the Safe Reopening Plan Template




This plan does not need to be submitted at this time.

- To be used to prepare when businesses and houses of worship open per the Governor's Order.
- County will not require approval for this plan.

- *This plan is not intended for food preparation and service, delivery of items to those in need, childcare and daycare services, school and educational activities, in-home caregiving, counseling, office work, and other activities that places and organizations of worship may provide.*

https://www.sandiegocounty.gov/content/dam/sdc/hhsa/programs/phs/Epidemiology/covid19/Community_Sector_Support/BusinessesandEmployers/SafeReopeningPlanTemplate.pdf (available also in [Spanish](#))

 **SAFE REOPENING PLAN**

Business Name:

Facility Address:

This plan does not need to be submitted at this time. This plan is to be used to prepare when businesses open per the Governor's Order. The County will not require approval for this plan. Please check back for further information on 5/8/2020. Businesses must implement all mandatory measures listed in A and B below. Businesses shall select applicable measures listed in C and D below and be prepared to explain why any measure that is not implemented is inapplicable to the business. Businesses shall also provide specific details regarding their Safe Reopening Plan pertaining to their business in section E below.

A. Signage (Mandatory):

- ☒ Signage at each public entrance of the facility to inform all employees and customers that they should: avoid entering the facility if they have a cough or fever; wear facial coverings, maintain a minimum six-foot distance from one another; and not shake hands or engage in any unnecessary physical contact.
- ☒ Signage posting a copy of the Safe Reopening Plan at each public entrance to the facility.

B. Measures To Protect Employee Health (Mandatory):

- ☒ Teleworking opportunities have been maximized.
- ☒ All employees have been told not to come to work if sick.
- ☒ All employees must have temperature taken upon reporting to work; if 100 degrees or more, should not be allowed in workplace. If a thermometer is not available, employees must be screened for symptoms (cough, shortness of breath or trouble breathing, fever, chills, muscle pain, sore throat, new loss of taste or smell)
- ☒ All employees must wear facial coverings in the workplace, if within six feet of others.
- ☒ All desks or individual work stations are separated by at least six feet.
- ☒ Break rooms, bathrooms, and other common areas are being disinfected frequently, on the following schedule:
Describe disinfection schedule here
- ☒ Personal Protective Equipment (PPE) has been provided at a level appropriate to employee job duties (describe below)
PPE has been provided to all

Mandatory & Recommendations



LIVE WELL
SAN DIEGO

Mandatory

Safe Reopening Plan

- ✓ Signage
- ✓ Measures To Protect Employee and Volunteer Health

Houses Of Worship

- ✓ *25% of building capacity **OR** 100 attendees, whichever is lower, unless other guidance is given*

Recommendations

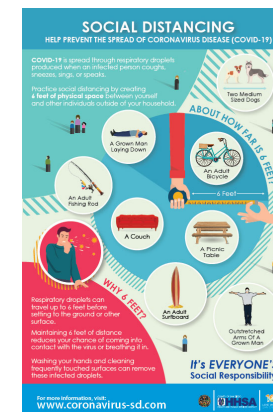
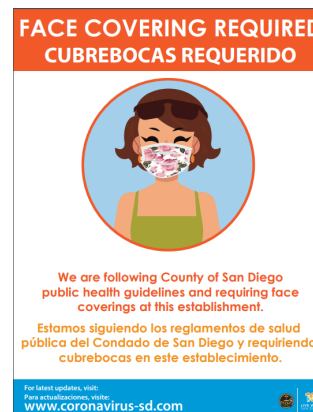
- Continued outdoor or streaming services encouraged.
- Vulnerable members of the population (over 65, compromised immune system or underlying condition) are strongly encouraged to participate through remote technology.

Mandatory Requirements For All Businesses And Houses of Worship



A. Signage

- ✓ At each public entrance to inform all employees and customers that they should: avoid entering the facility if they have a cough or fever; wear facial coverings, maintain a minimum six-foot distance from one another; and not shake hands or engage in any unnecessary physical contact




Mandatory Requirements For All Businesses And Houses of Worship



LIVE WELL
SAN DIEGO

B. Measures To Protect Employee And Volunteer Health

- ✓ Teleworking opportunities have been maximized.
- ✓ All have been told not to come to work if sick.
- ✓ All must have temperature taken upon reporting to work; if 100 degrees or more, should not be allowed in workplace. 
- ✓ **If a thermometer is not available, all must be screened for symptoms (cough, shortness of breath or trouble breathing, fever, chills, muscle pain, sore throat, new loss of taste or smell).**
- ✓ All must wear facial coverings in the workplace, if within six feet of others.



Mandatory Requirements For All Businesses And Houses of Worship



LIVE WELL
SAN DIEGO

B. Measures To Protect Employee And Volunteer Health--Continued

- ✓ All desks or individual workstations are separated by at least six feet.
- ✓ Break rooms, bathrooms, and other common areas are being disinfected frequently, in accordance to a set schedule.
- ✓ PPE has been provided at a level appropriate to employee job duties.
- ✓ Soap and water are available to all employees at _____ locations.
- ✓ Copies of the Protocol have been distributed to all employees.



Mandatory Requirements For All Businesses And Houses of Worship



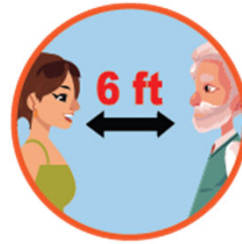
LIVE WELL
SAN DIEGO

C. Measures To Protect Customer Safety

- ✓ Limit the number of customers (congregants/visitors) in the store (house of worship) at any one time to (insert #) which allows for customers and employees to easily maintain at least a six-foot distance from one another at all practicable times.
- ✓ All patrons/visitors must wear facial coverings.
- ✓ Curbside or outdoor service is made available where feasible.
- ✓ Optional – Describe other measures



Use a face covering
if you leave your home.



Maintain at least 6 feet
between you and others.

Mandatory Requirements For All Businesses And Houses of Worship



D. Measures to Keep People at Least Six Feet Apart

- ✓ Placing signs outside the business or house of worship, reminding people to be at least six feet apart, including when in line. Include encouragement for pedestrian traffic to follow one-way migration paths, if appropriate.
- ✓ Placing tape or other markings at least six feet apart in visitor line areas inside the business or house of worship and on sidewalks at public entrances with signs directing visitors to use the markings to maintain distance.
- ✓ All employees have been instructed to maintain at least six feet distance from visitors and from each other, except employees may momentarily come closer when necessary to accept payment, deliver goods or services, or as otherwise necessary.
- ✓ Appointment system is utilized, when appropriate.

Mandatory Requirements For All Businesses And Houses of Worship



LIVE WELL
SAN DIEGO

E. Additional Measures Specific to Business (Mandatory)

Examples may include:

Funerals

- Consider reduced visitor capacity and stagger visitation times at funerals, wakes, if possible.
- Remind visitors to maintain physical distance from each other, from staff and volunteers, and from the deceased.

Communion

- Consider modifying practices that are specific to particular faith traditions that might encourage the spread of COVID-19. Examples are avoiding the use of a common cup, offering communion in the hand instead of on the tongue, providing pre-packed communion items on chairs prior to service, etc., in accordance with CDC guidelines.

Offerings

- Discontinue passing offering plates and similar items that move between people. Use alternative giving options such as secure drop boxes that do not require opening/closing and can be cleaned and disinfected. Consider implementing digital systems that allow congregants/visitors to make touch-free offerings.

Examples of websites and apps you can use to transfer money online (Venmo, Cash App, PayPal)



THANK YOU

For additional information, visit coronavirus-sd.com

For questions, email COVID-CBO-FAITH@sdcounty.ca.gov

LINKS:

[California Department of Public Health Guidance](#)

[County Public Health Order](#)

[Safe Reopening Plan](#)



LIVE WELL
SAN DIEGO