



COMMUNITY-BASED ORGANIZATIONS

FREQUENTLY ASKED QUESTIONS

Information updated on 6/12/20

For the most current updates, visit coronavirus-sd.com



LIVE WELL
SAN DIEGO

COMMUNITY BASED ORGANIZATIONS FAQs



LIVE WELL
SAN DIEGO

WHERE CAN PEOPLE BE SCREENED OR TESTED FOR COVID-19?

COVID-19 tests:

- If you have [symptoms](#), contact your medical provider. If you don't have one, call 2-1-1. If you have serious symptoms, like difficulty breathing, call 9-1-1.
- Contact your health care provider to find out if they have free testing.
- For free County testing sites, make an appointment by calling 2-1-1.
- For free state testing sites, make appointment [online](#) or call [888-634-1123](#). State sites are in various locations around San Diego County.
- These are diagnostic tests. The test takes about 5-10 minutes. Test results generally come back in 3-5 days.





CAN YOU EXPLAIN ANTIBODY TESTING AND WHERE IT IS AVAILABLE?

- An antibody (or serologic) test shows if you were infected at some point in the past. It requires a blood sample to check for antibodies - proteins in blood that are developed when the body fights an infection. Antibody tests do not check for the virus itself.
- The County or state is not offering antibody tests at this time.
- For more details, see the FDA's [Coronavirus Testing Basics](#).



COMMUNITY BASED ORGANIZATIONS FAQs



WE'RE ALL GETTING TEXTS AND INFORMATION ABOUT PANDEMIC EBT, IS THIS LEGITIMATE? WHAT IS THE APPLICATION PROCESS?

- While schools are closed due to COVID-19, families with students who were receiving free or reduced-price breakfast and lunch at school can get up to \$365 per child for groceries this summer.
- This federal nutrition benefit is called Pandemic-EBT (P-EBT) and is available for families in addition to continued grab-and-go meal services at many school sites in San Diego County.
- For more information, eligibility or to apply go to: <https://www.sandiegohungercoalition.org/p-ebt>



COMMUNITY BASED ORGANIZATIONS FAQs



LIVE WELL
SAN DIEGO

IS THERE A PLAN TO REVIVE THE SAN DIEGO ECONOMY OR IS THERE ASSISTANCE FOR BUSINESSES AND NON-PROFITS?

- A new low-interest loan program for small retailers and other businesses in San Diego County's unincorporated area is now accepting applications. Businesses hit by COVID-related losses, and with 50 employees or less, can seek loans between \$5,500 and \$50,000. To apply go to <https://us.accion.org/covidrelief>.
- For more information about other loan programs, go to the San Diego County COVID-19 Small Business & Nonprofit Loan Program. Find more information at: <https://sandiegosbnlp.org/>



COMMUNITY BASED ORGANIZATIONS FAQs



LIVE WELL
SAN DIEGO

DO WE NEED TO FILL OUT THE SAFE REOPENING PLAN? DO WE NEED TO POST THIS ON OUR DOORS? IS ANYONE FROM THE COUNTY OR STATE GOING TO APPROVE THIS OR CAN WE JUST POST AND IMPLEMENT?

- Per the Public Health Order, all organizations open to the public need to fill out the Safe Reopening Plan, as well as post it publicly, share it with your employees, and follow state guidance.
- You do not need to submit these forms to the County.



COMMUNITY BASED ORGANIZATIONS FAQs



WHAT IS THE GUIDANCE FOR SUMMER CAMPS, YOUTH CAMPS AND OTHER ACTIVITIES DONE BY YOUTH-SERVING ORGANIZATIONS?

Summer Day Camps are authorized to open if:

1. They are not sports camps
2. Stable group sizes of 12 kids or less without mixing
3. Practice physical distancing to greatest extent possible.
4. Wear face coverings if/when within 6' of another
5. Maintain infection control protocol: personal hygiene and routine cleaning of contact areas and the like.



COMMUNITY BASED ORGANIZATIONS FAQs

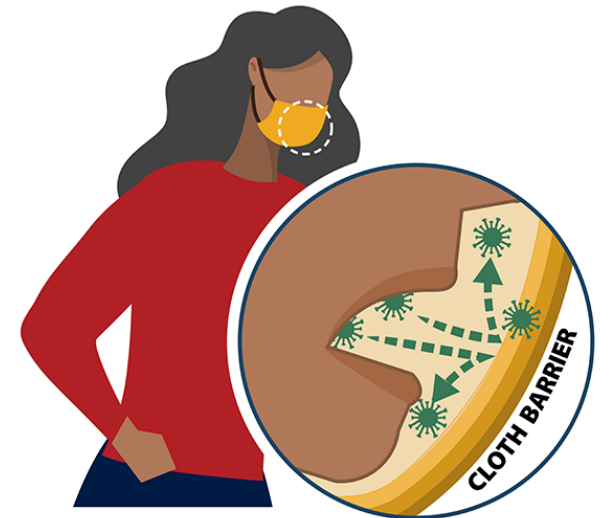


WHAT ARE THE GUIDELINES REGARDING FACIAL COVERINGS?

San Diego County Face Covering Information

Face coverings are required whenever you leave your home and are within 6 feet of a non-household member

- Face coverings can be made of cloth. Homemade coverings, bandanas, scarves and neck gaiters are all OK. Medical grade masks should be saved for healthcare workers.
- Face covering should be used in addition to other protective measures, including frequent hand washing, avoid touching eyes, nose and mouth with unwashed hands, staying at home, and practicing social distancing when around others outside of your household.



FACE SHIELDS BEST PRACTICES



LIVE WELL
SAN DIEGO

Best Practices for using Face Shields when interacting with individuals with hearing loss or disabilities

Face coverings should be worn by employees who are interacting with the public at businesses.



When interacting with a person who may need access to important facial cues, properly place the face shield on your face after washing or sanitizing your hands.



Remove your facial covering and continue to maintain physical distancing during your interaction.



After the interaction, place your facial covering back on your face.



Once you have put on your facial covering, remove the face shield and wash or sanitize your hands.





THANK YOU

For additional information, visit coronavirus-sd.com

For questions, email COVID-CBO-FAITH@sdcounty.ca.gov

LINKS:

[California Department of Public Health Guidance](#)

[County Public Health Order](#)

[Safe Reopening Plan](#)

[CDC Guidance for Small Businesses](#)



LIVE WELL
SAN DIEGO