



Sexually Transmitted Diseases in San Diego County, 2011 Data Slides

County of San Diego,
Health and Human Services Agency,
HIV, STD and Hepatitis Branch of
Public Health Services



September 2012

www.STDSanDiego.org

Preface

This publication, *Sexually Transmitted Diseases in San Diego County, 2011 Data Slides*, includes reported disease data collected through 2011 for chlamydia, gonorrhea and syphilis. All tables and figures published here supersede those in prior publications.

This slide set provides a comprehensive picture of reported sexually transmitted disease trends and current morbidity in San Diego. These data are compiled to guide policy and program development within the County of San Diego's HIV, STD and Hepatitis Branch, local STD programs, and other public health agencies.

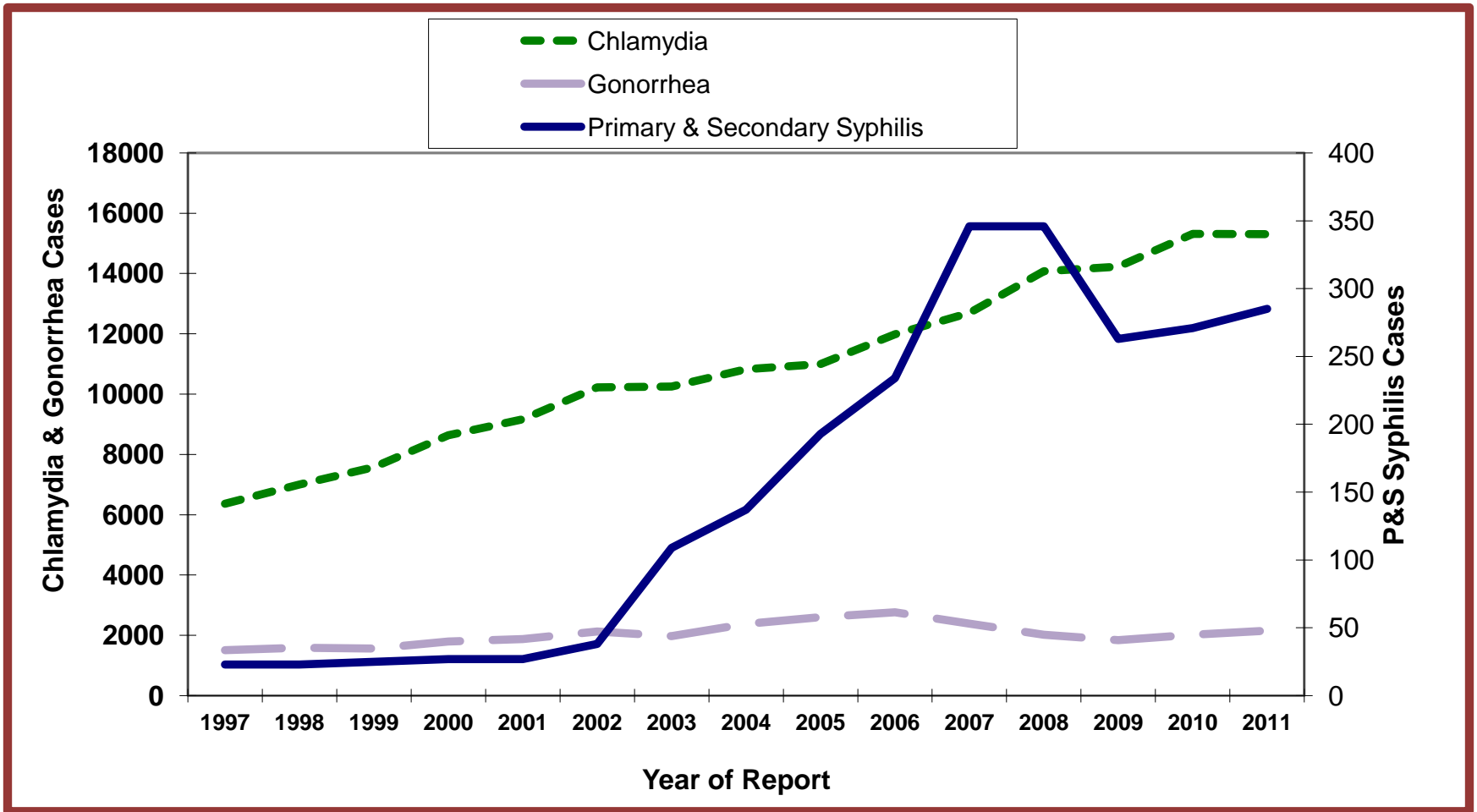
Copyright Information

All material contained in this report is in the public domain and may be used and reprinted without permission. Citation to source is requested.

Suggested Citation

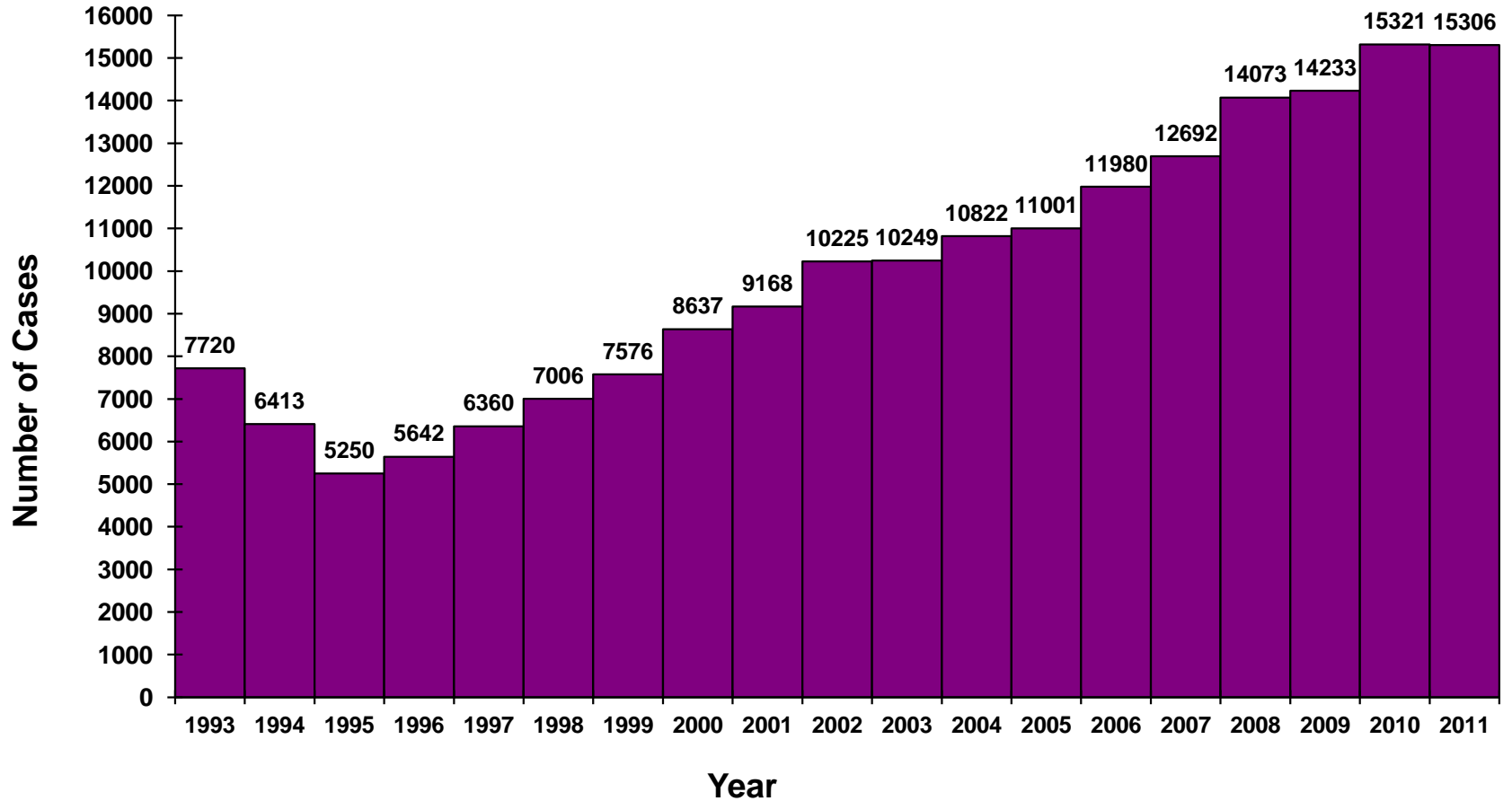
County of San Diego, Health and Human Services Agency, Public Health Services, HIV, STD and Hepatitis Branch. 2012. *Sexually Transmitted Diseases in San Diego County, 2011 Data Slides*. Accessed MM/DD/YY from www.STDSanDiego.org.

STDs Reported Among San Diego County Residents by Year, 1997 – 2011

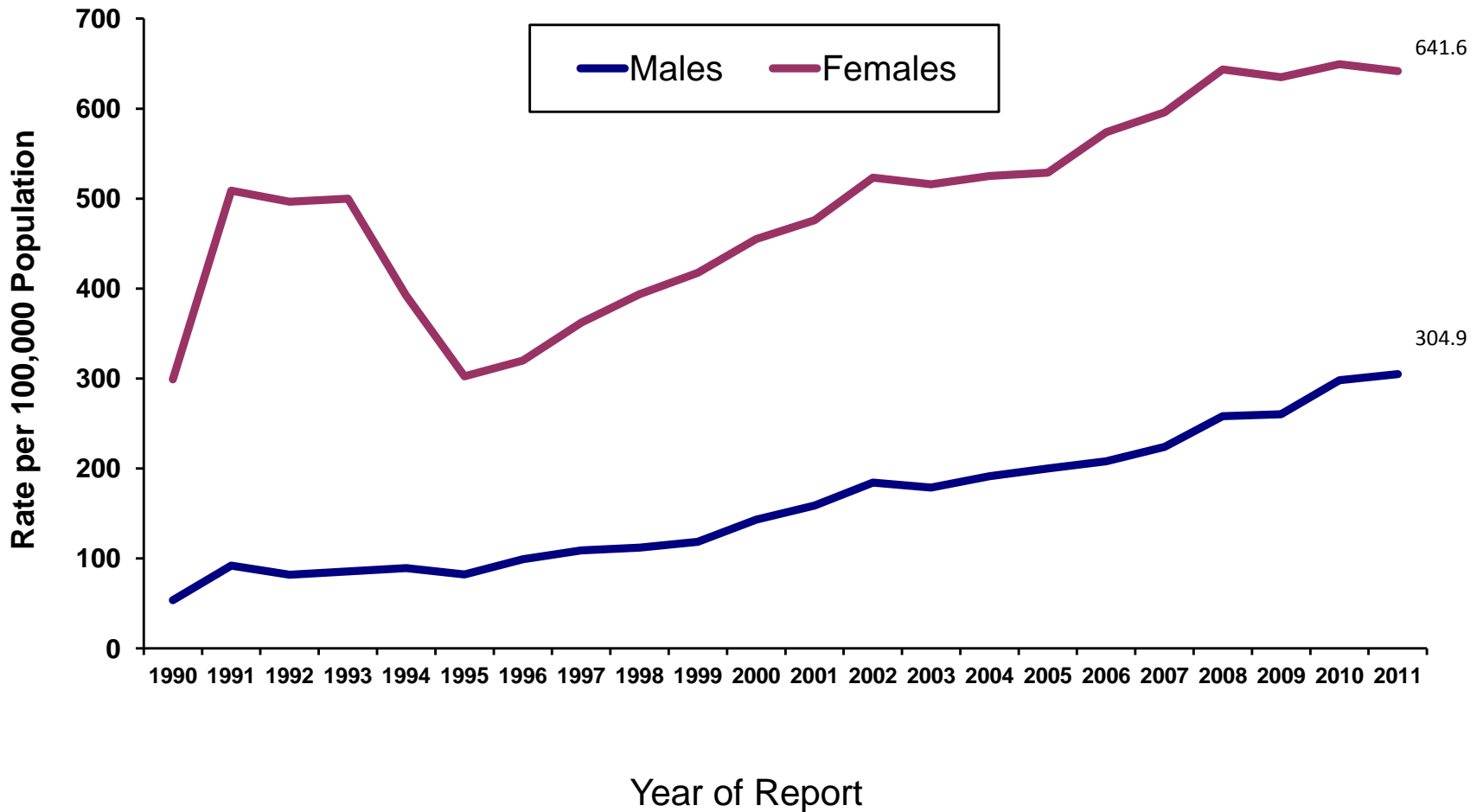


Note: The scale for syphilis differs from the scale for chlamydia and gonorrhea.

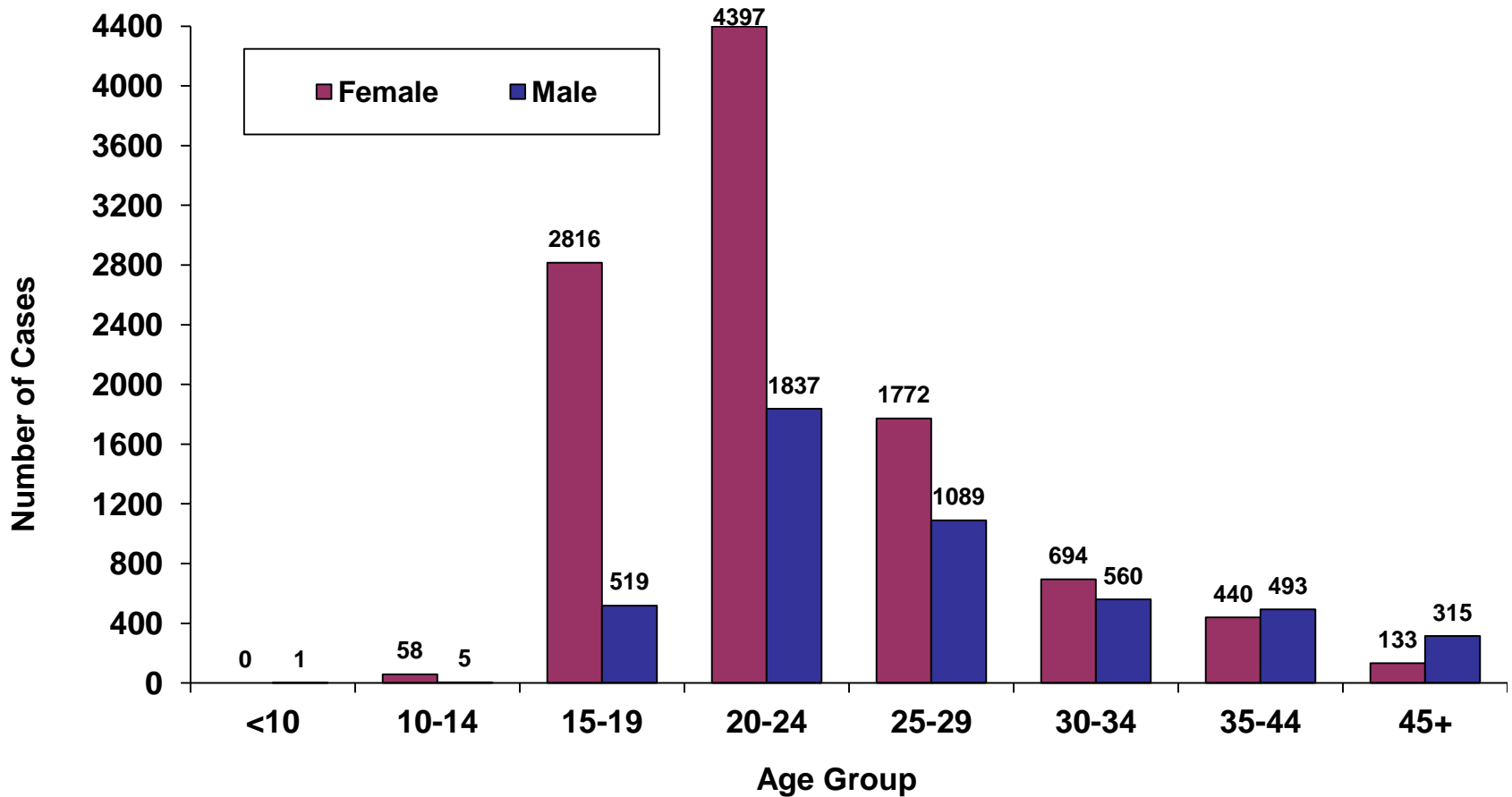
Chlamydia Cases by Year San Diego County, 1993–2011



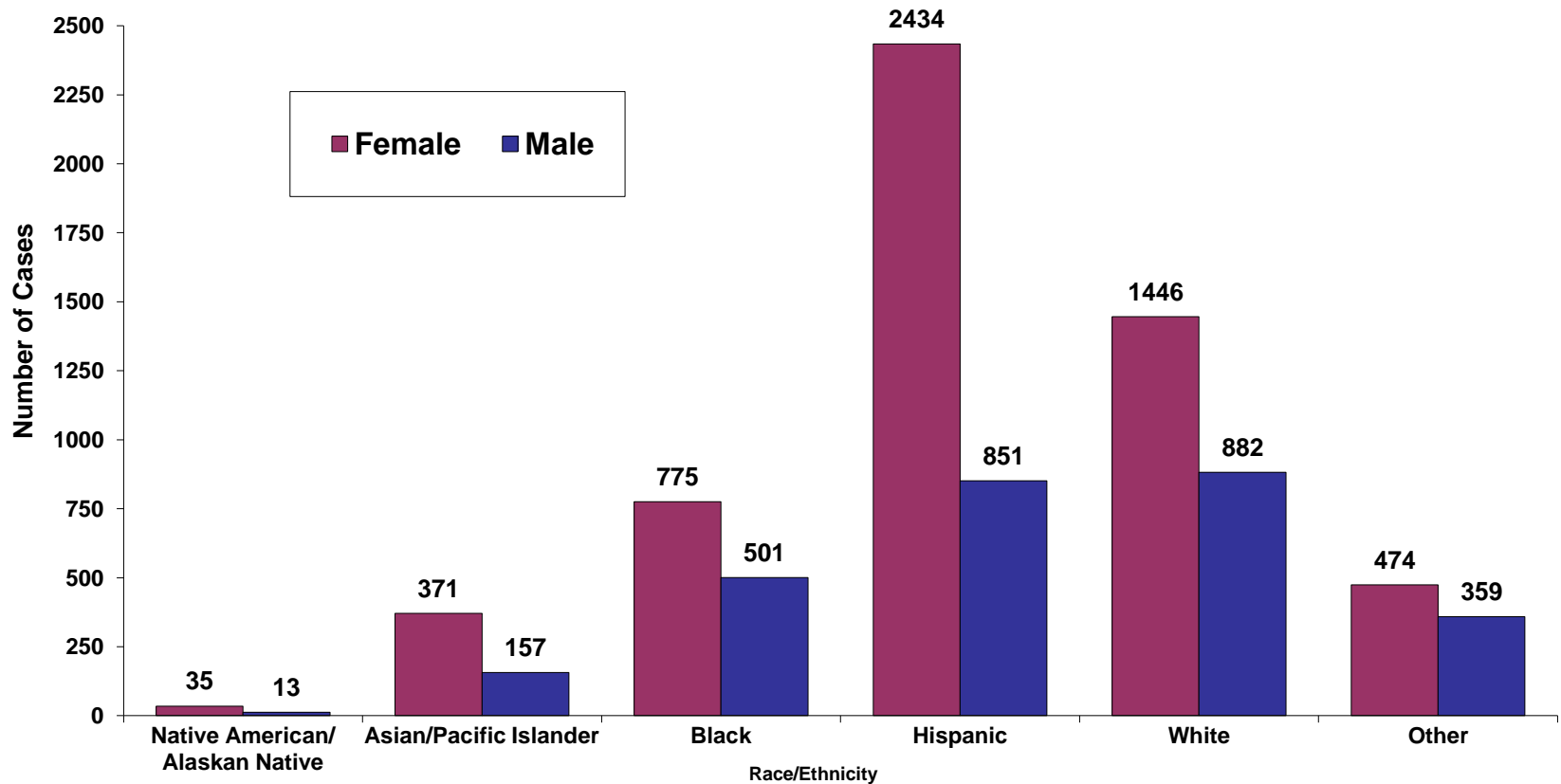
Chlamydia Rates by Gender and Year — San Diego County, 1990 – 2011



Chlamydia Cases by Gender and Age San Diego County, 2011

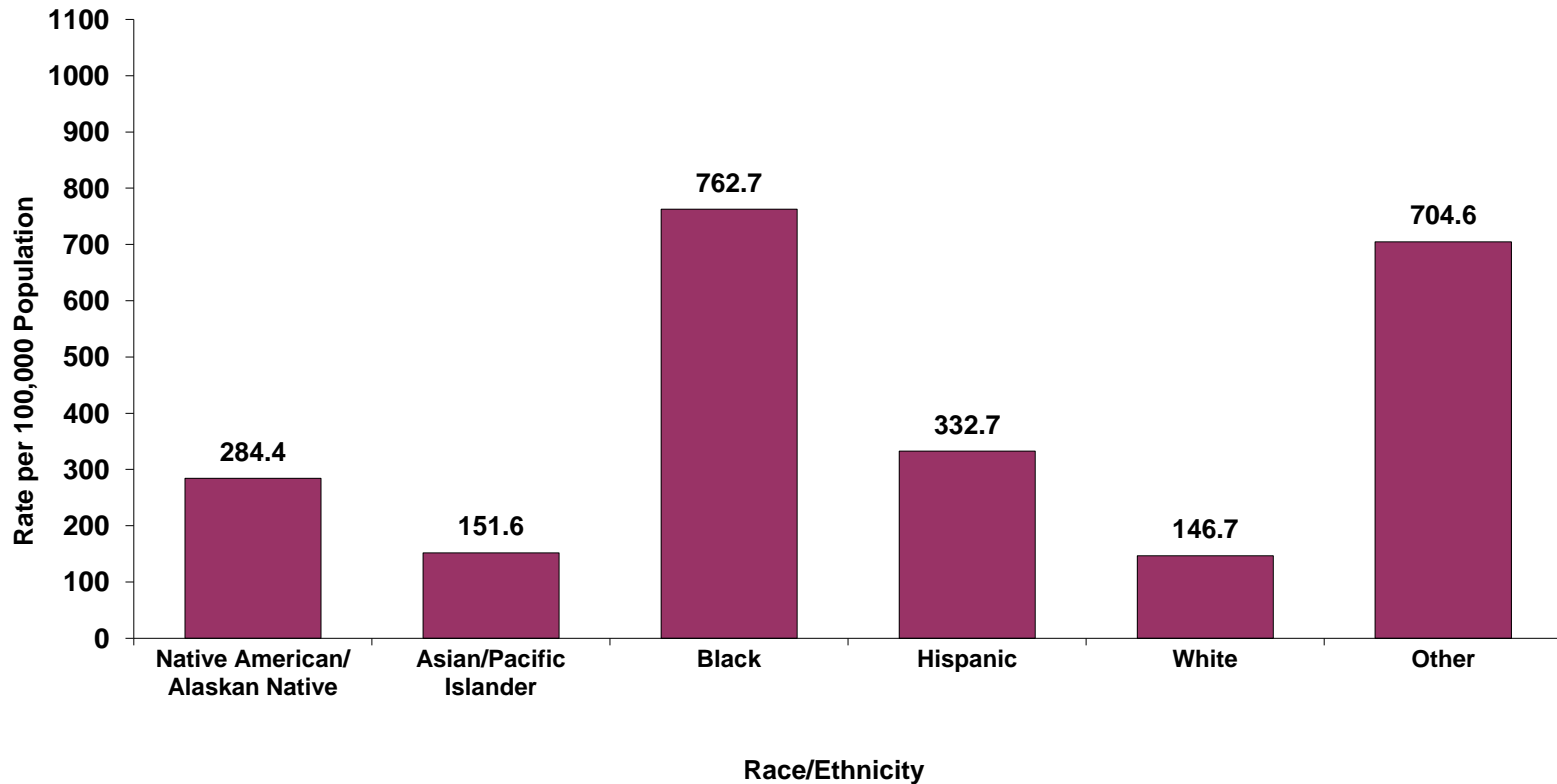


Chlamydia Cases by Gender and Race/Ethnicity – San Diego County, 2011



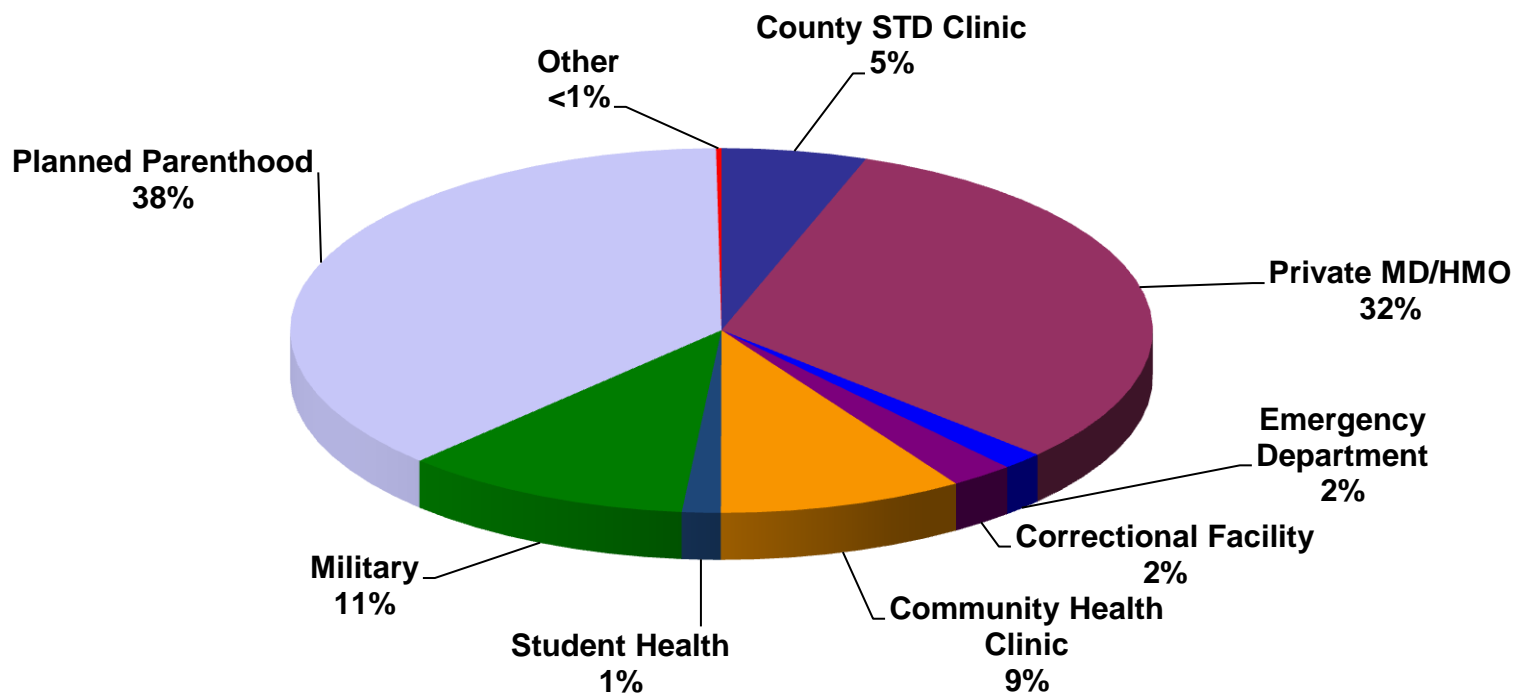
Note: 46% of cases are missing race/ethnicity and are not included in rates above

Chlamydia Rates by Race/Ethnicity – San Diego County, 2011

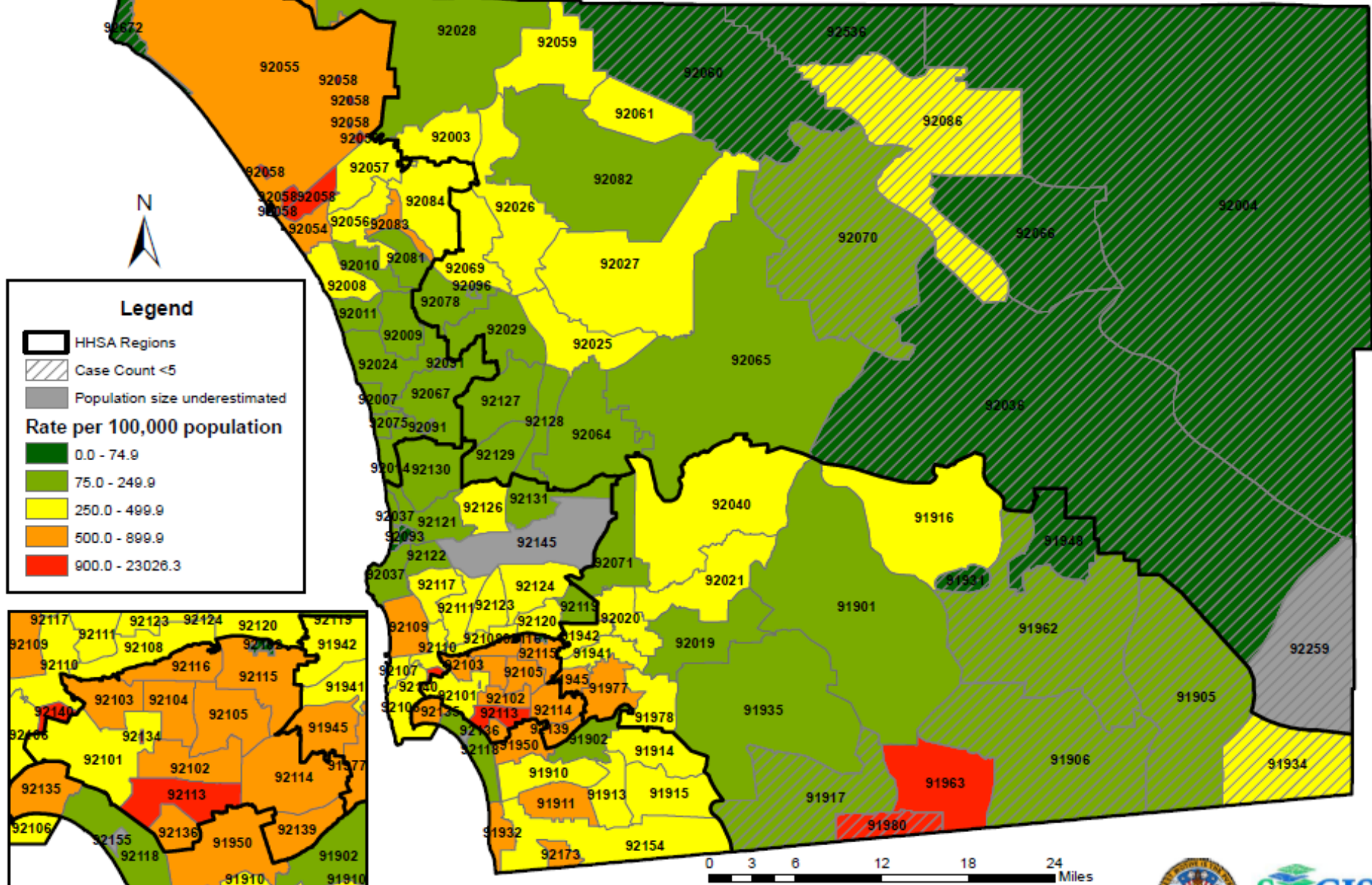


Note: 46% of cases are missing race/ethnicity and are not included in rates above.

Chlamydia Cases Reported By Provider Type San Diego County, 2011



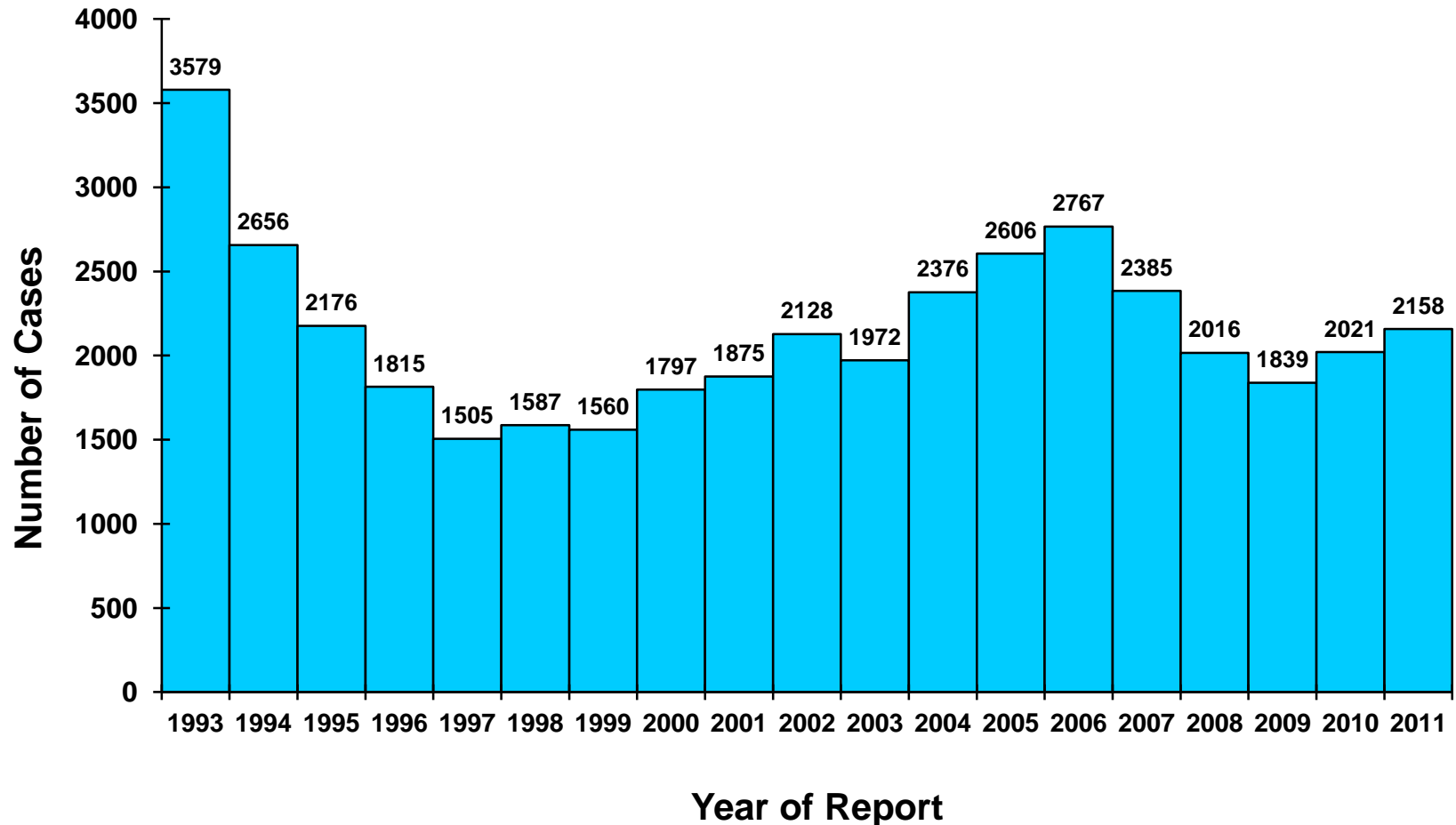
Chlamydia Rates by Zip Code San Diego County, 2011



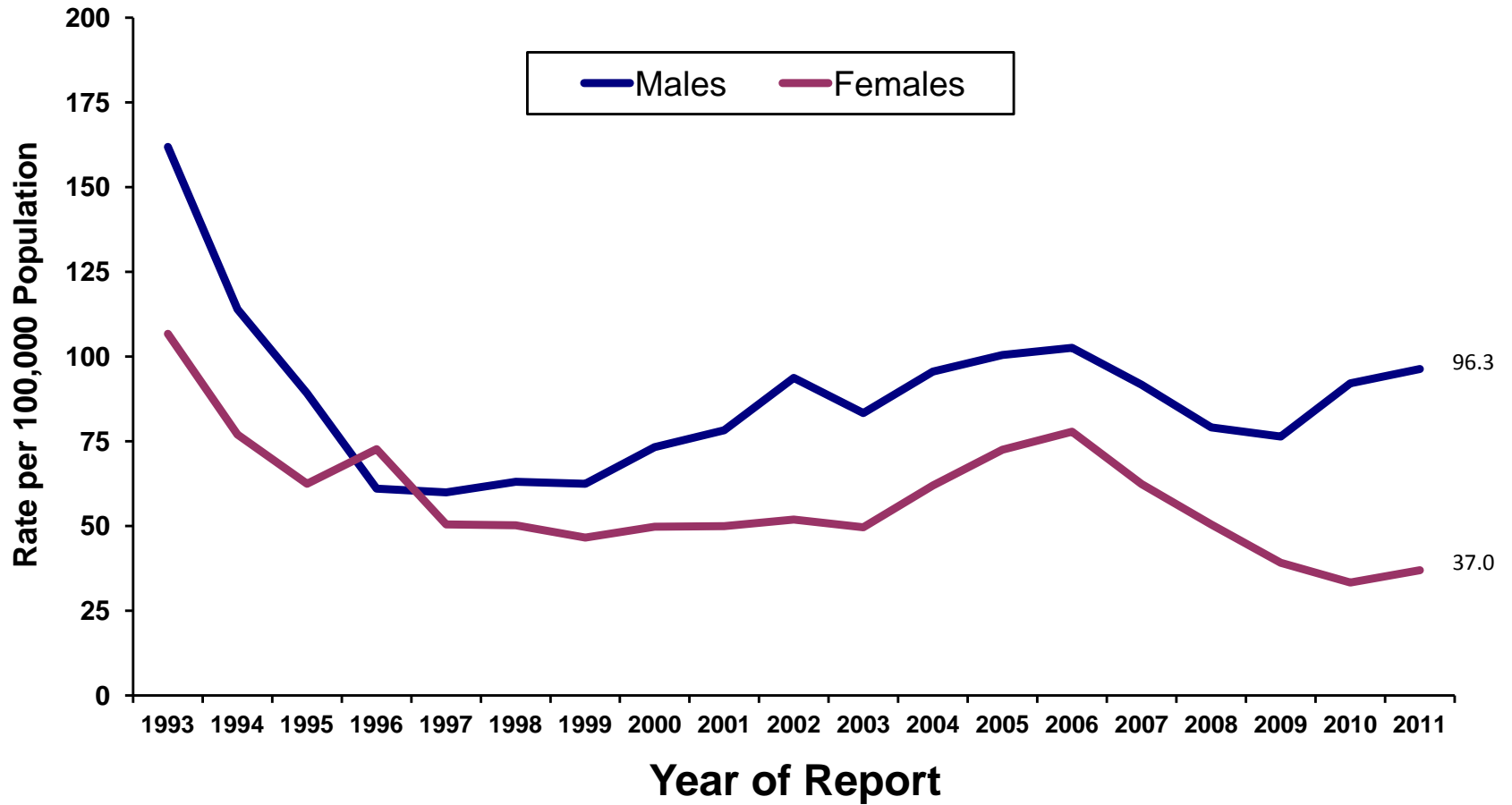
Source: County of San Diego, Health and Human Services Agency, HIV, STD and Hepatitis Branch, Morbidity Database
 Map Date: August 20, 2012
 Contact: Marjorie Lee



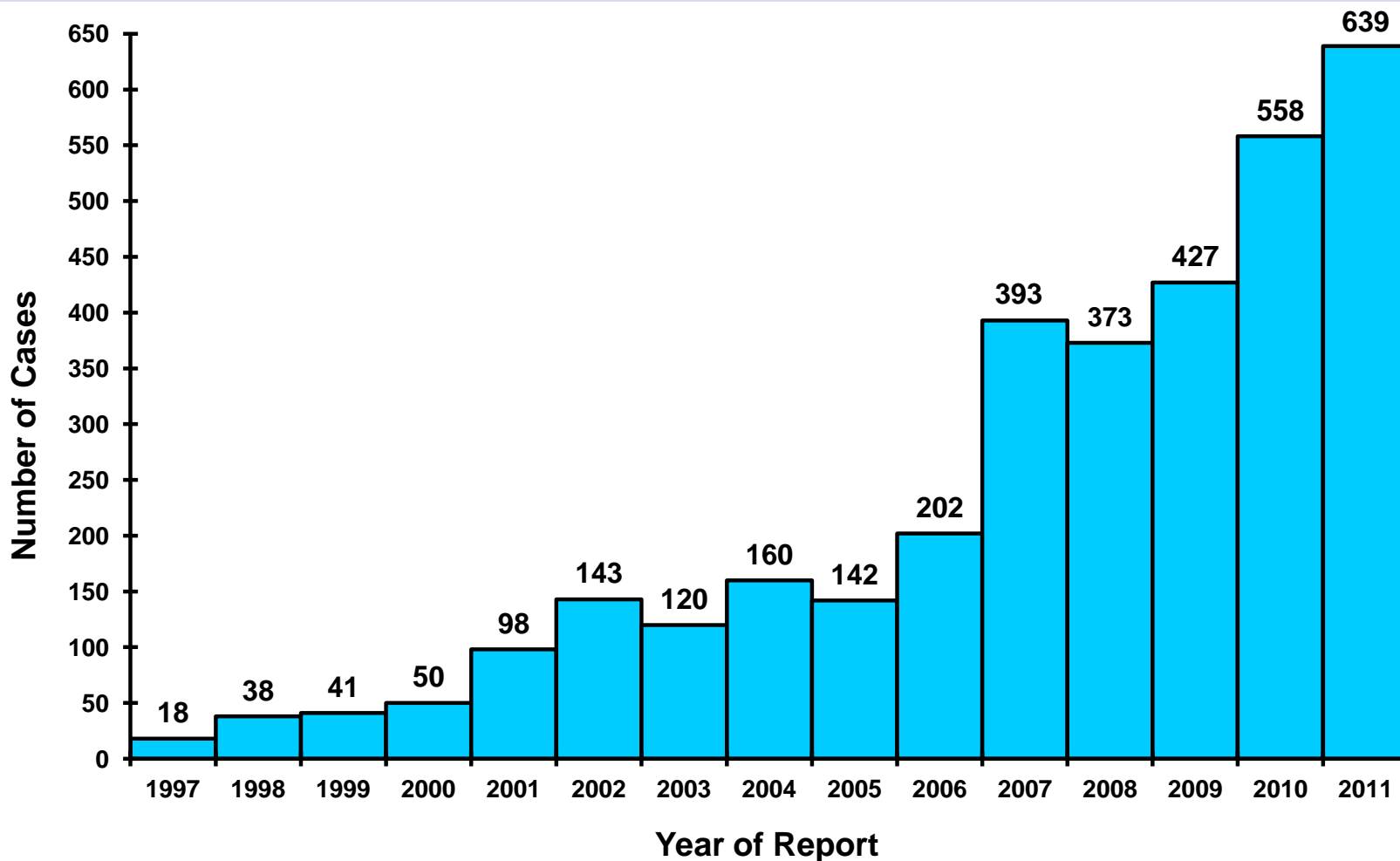
Gonorrhea Cases by Year San Diego County, 1993 – 2011



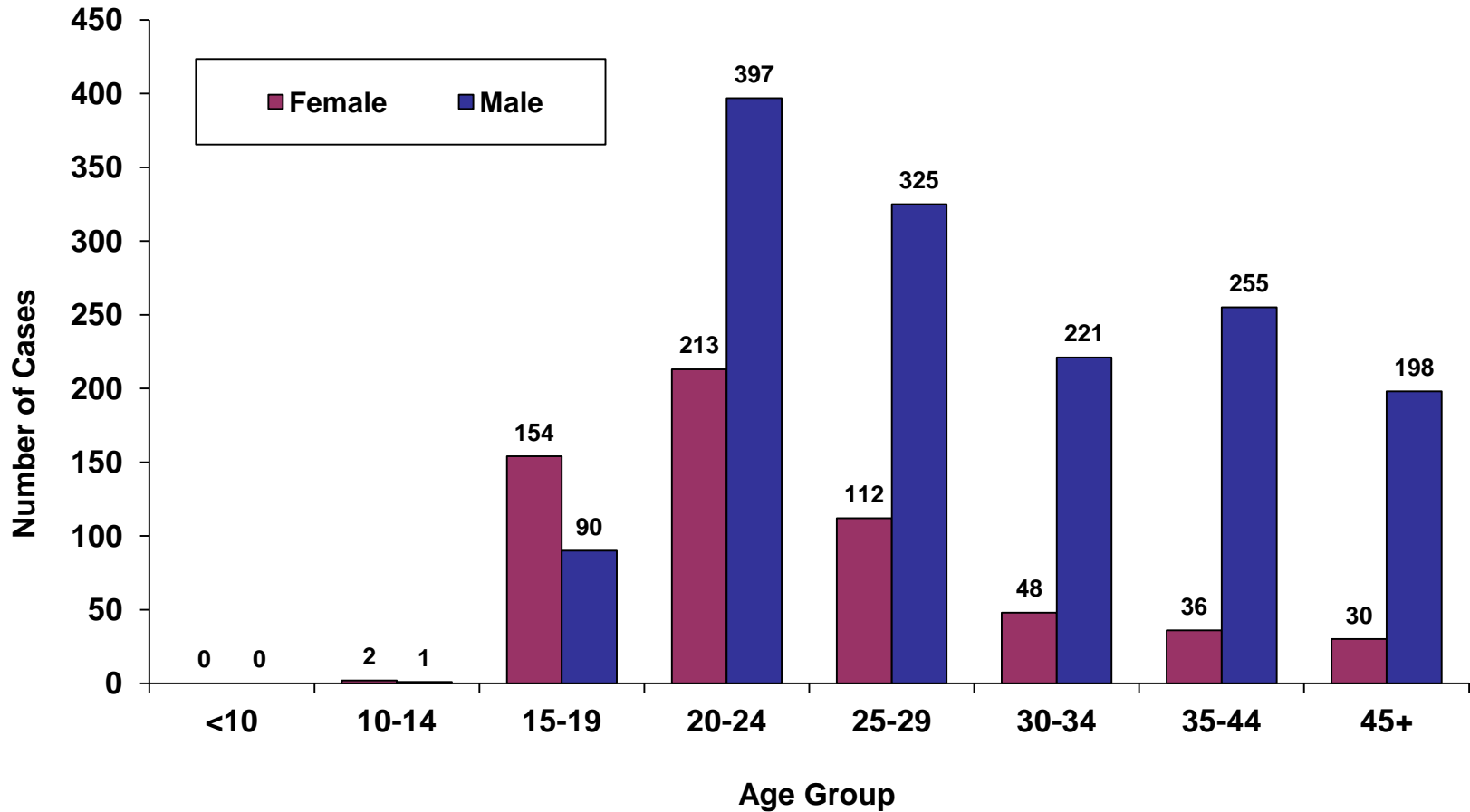
Gonorrhea Rates by Gender and Year San Diego County, 1993 – 2011



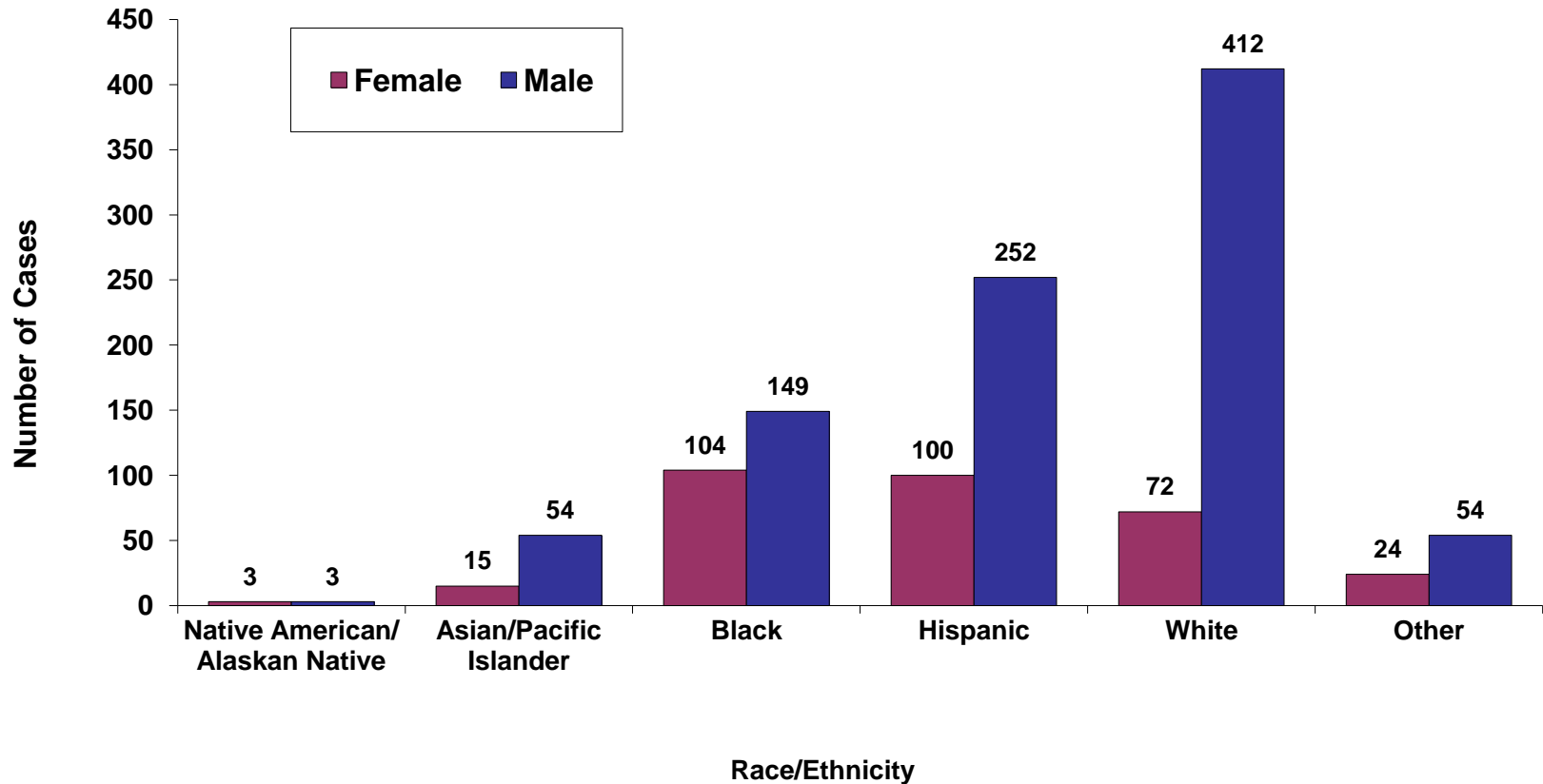
Rectal or Pharyngeal Gonorrhea Infections Males, San Diego County, 1997 – 2011



Gonorrhea Cases by Gender and Age San Diego County, 2011

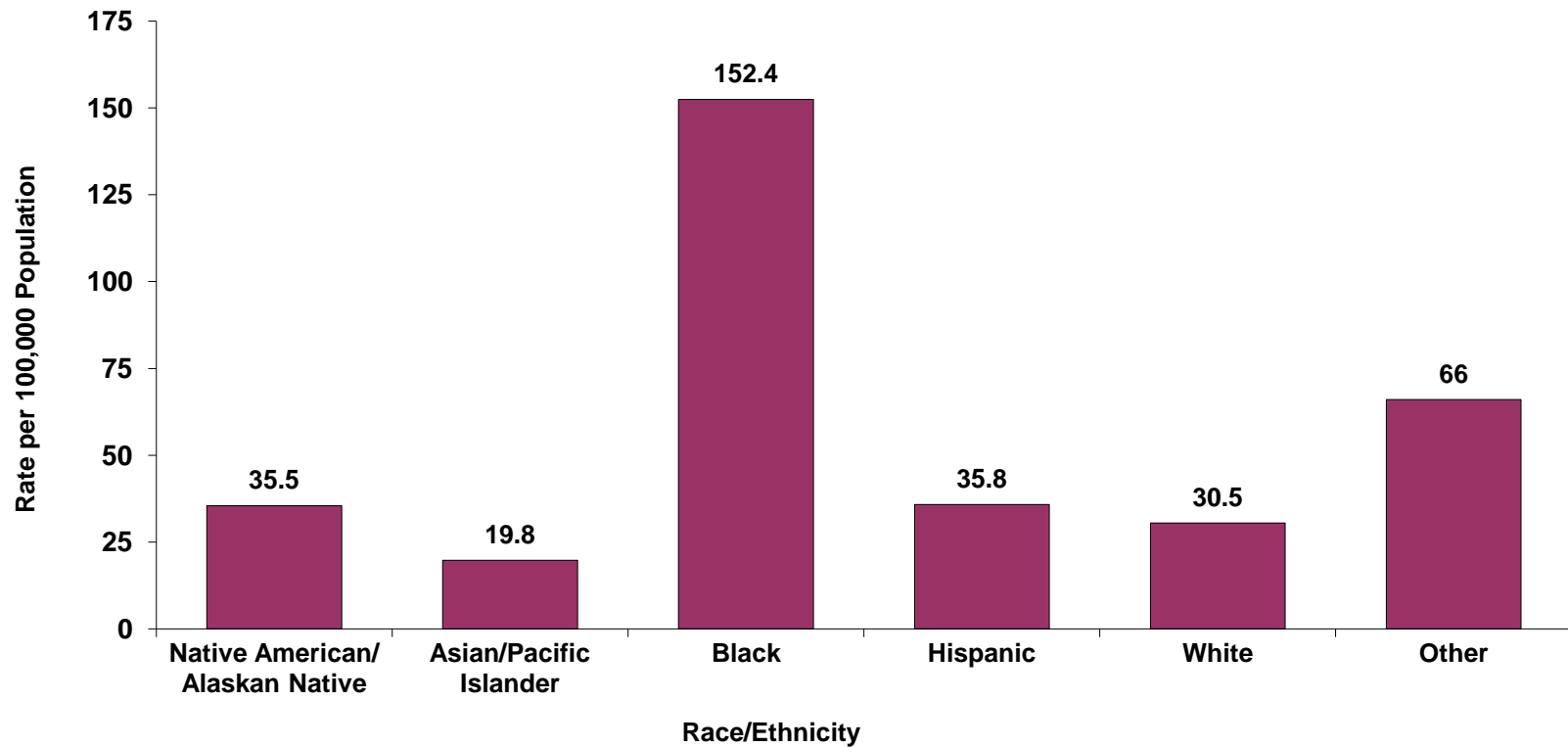


Gonorrhea Cases by Gender and Race/Ethnicity – San Diego County, 2011



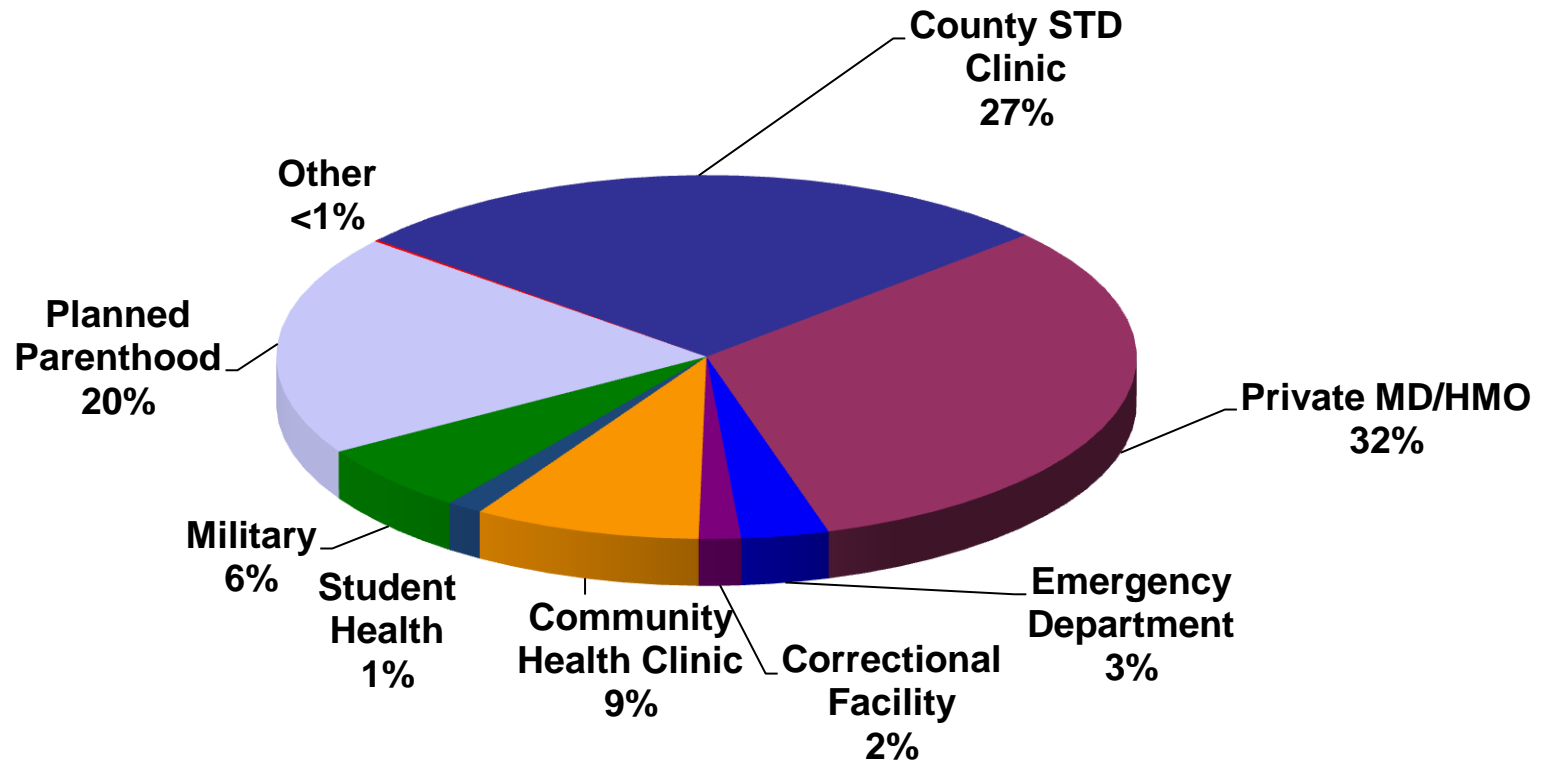
Note: 42% of cases are missing race/ethnicity and are not included in counts above.

Gonorrhea Rates by Race/Ethnicity San Diego County, 2011

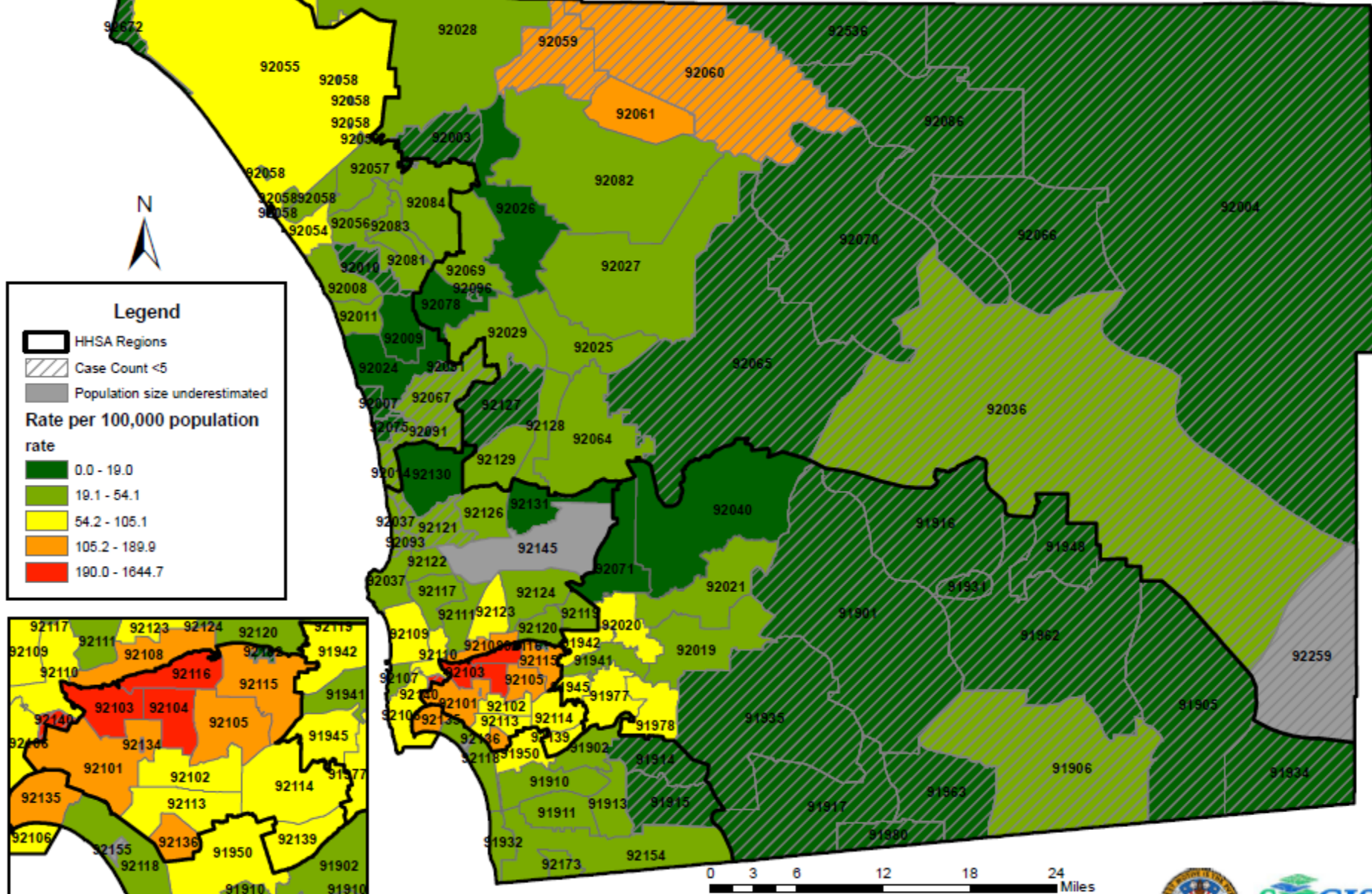


Note: 42% of cases are missing race/ethnicity and are not included in counts above

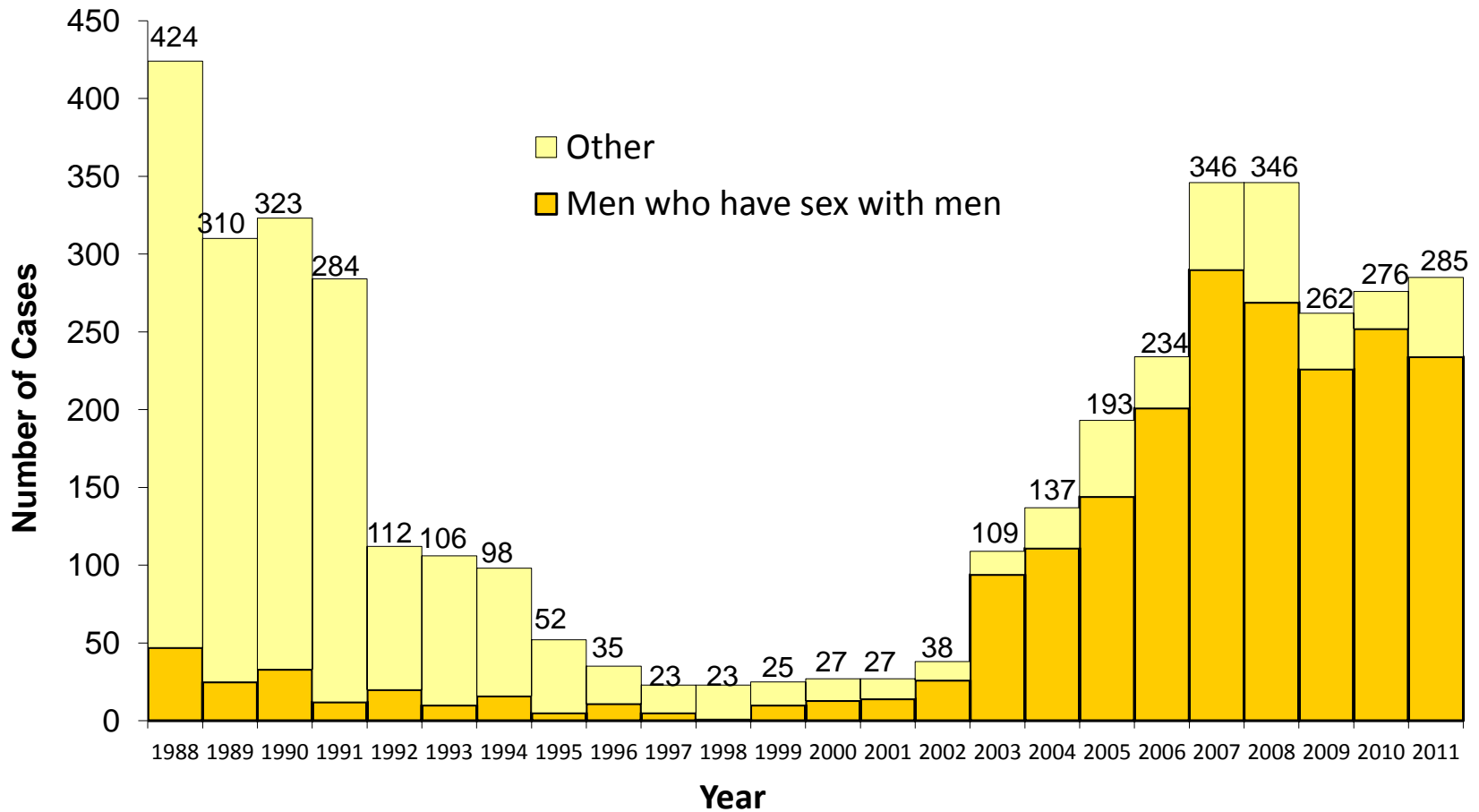
Gonorrhea Cases Reported by Provider Type San Diego County, 2011



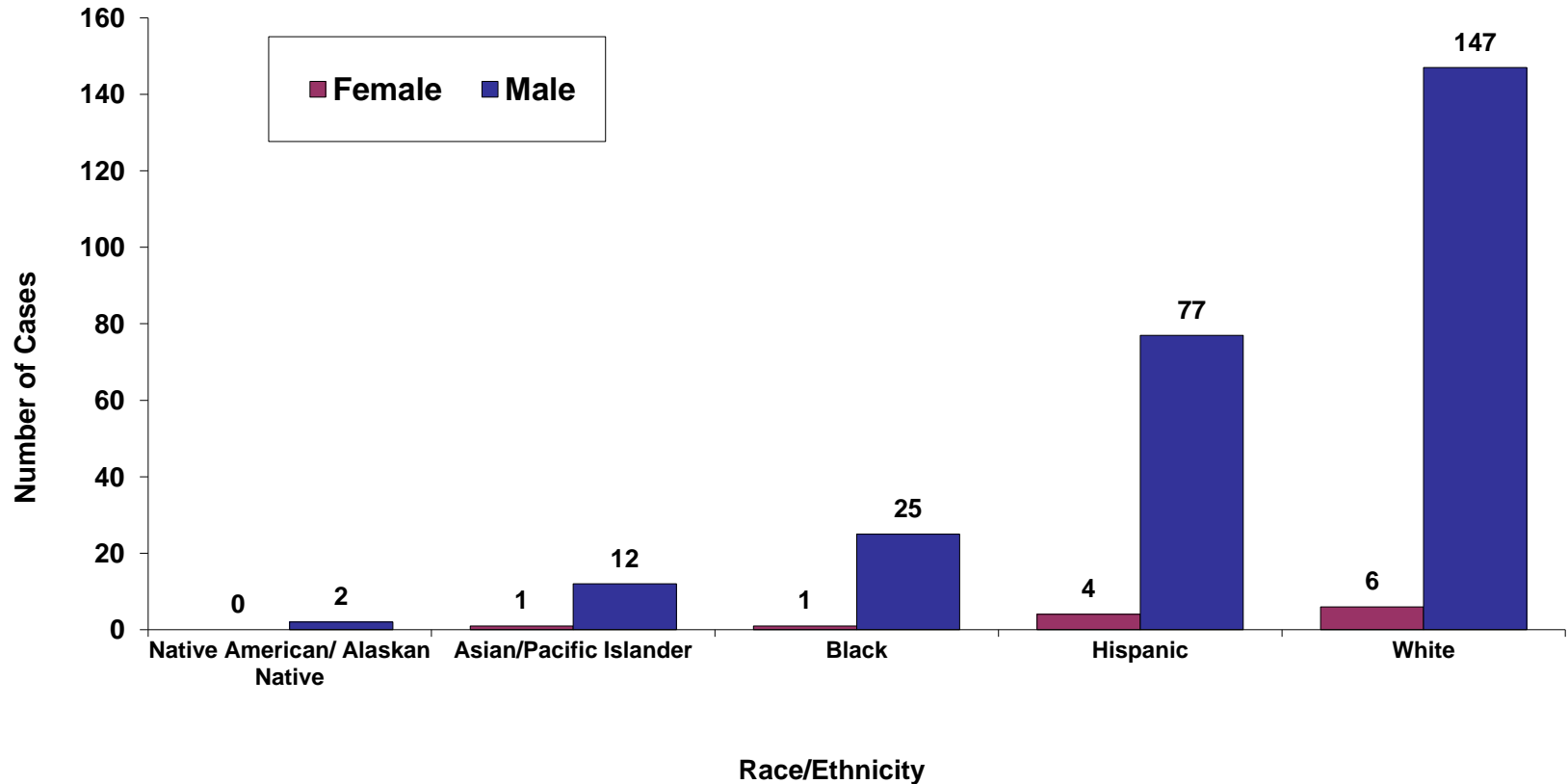
Gonorrhea Rates by Zip Code San Diego County, 2011



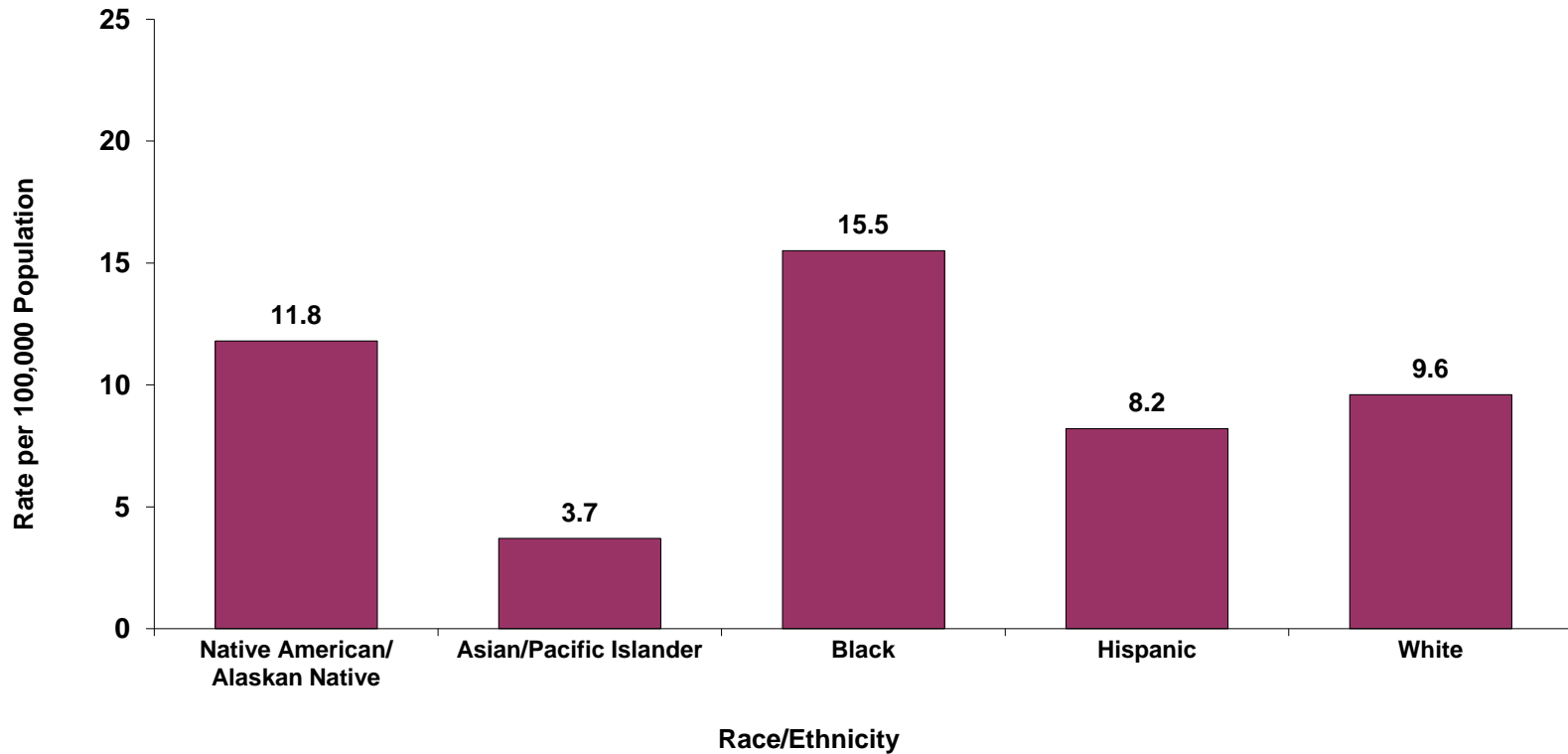
Primary & Secondary Syphilis Cases San Diego County, 1988 – 2011



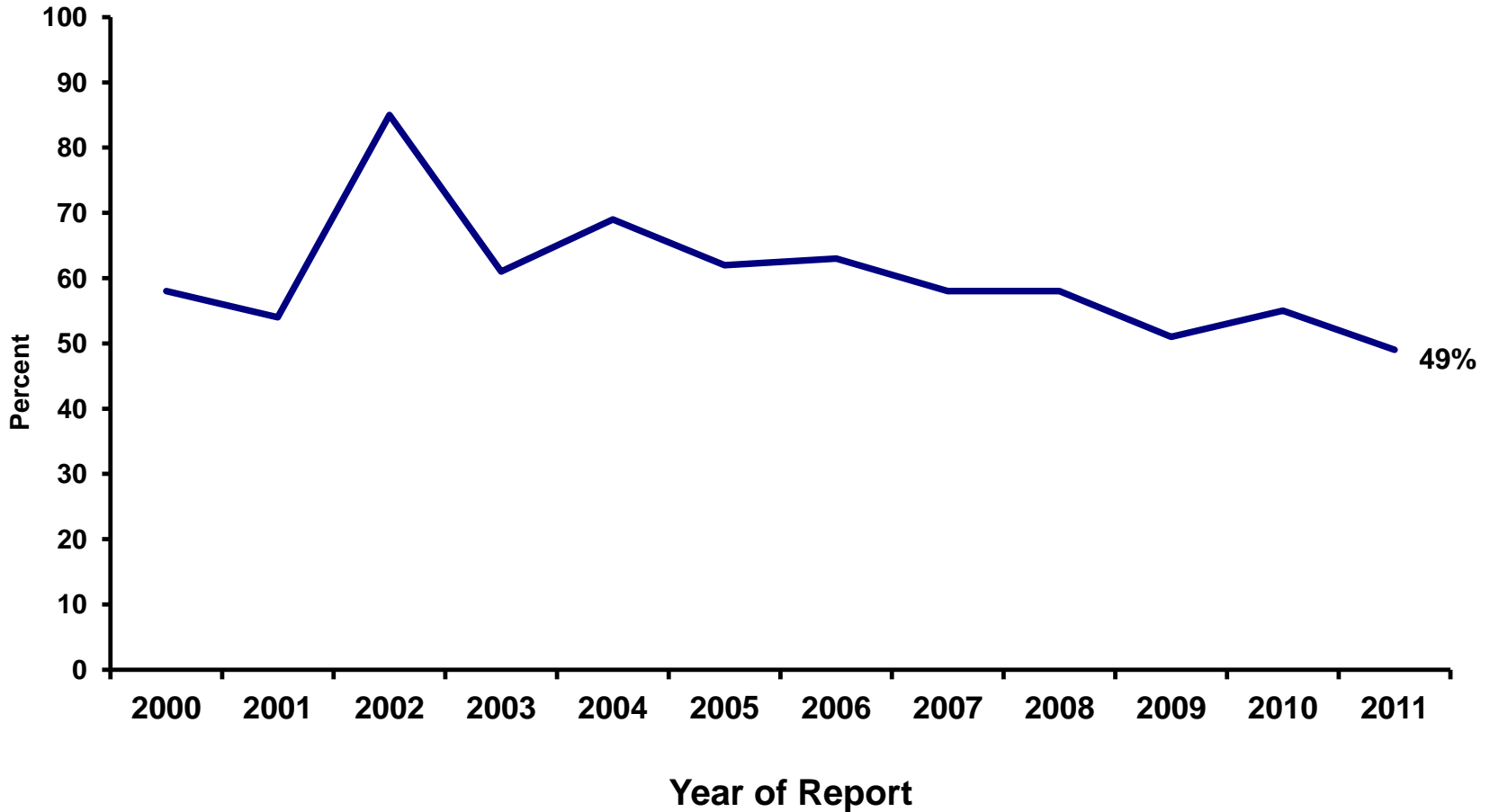
Primary & Secondary Syphilis Cases by Gender and Race/Ethnicity – San Diego County, 2011



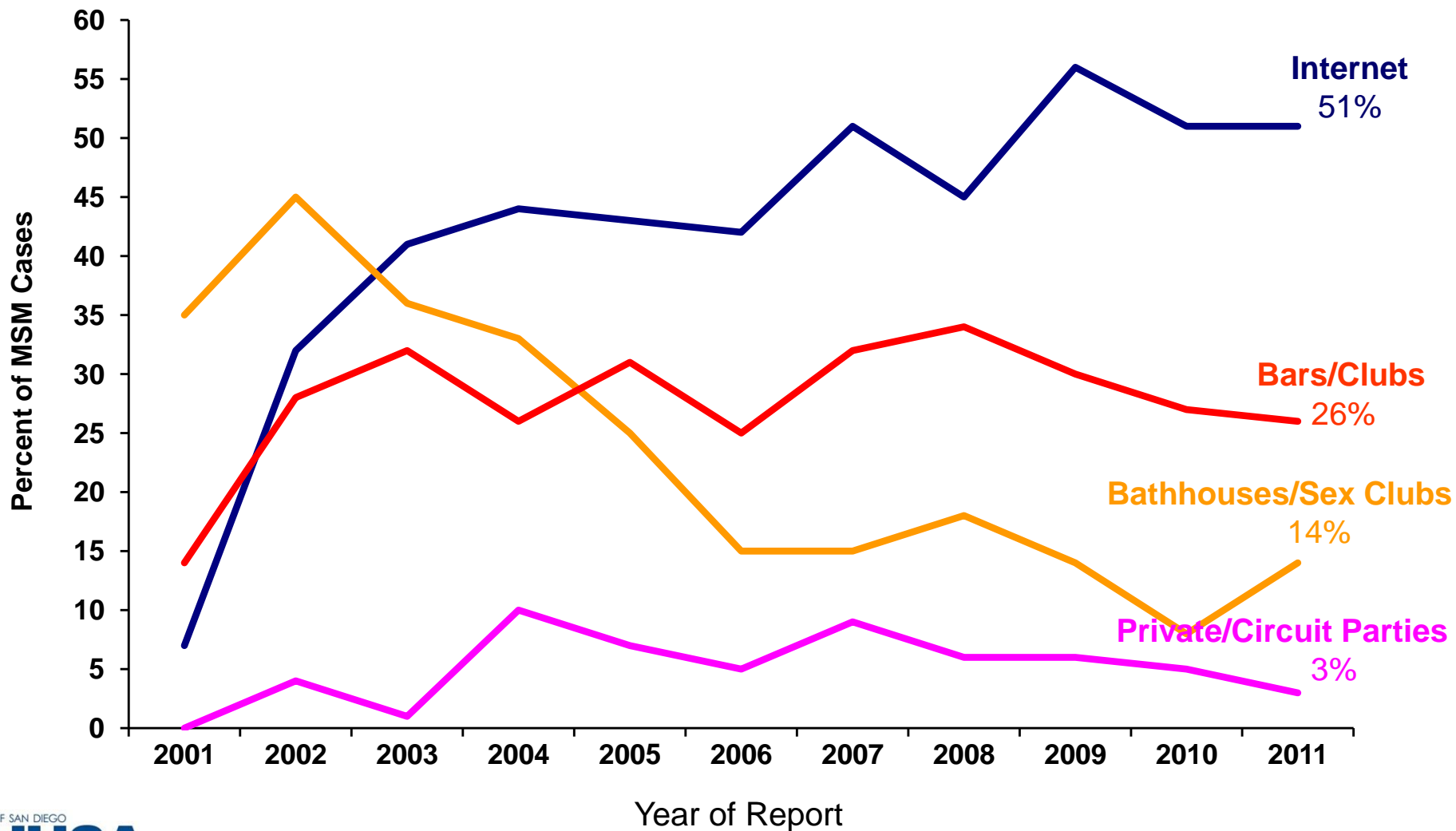
Primary & Secondary Syphilis Rates by Race/Ethnicity, San Diego County, 2011



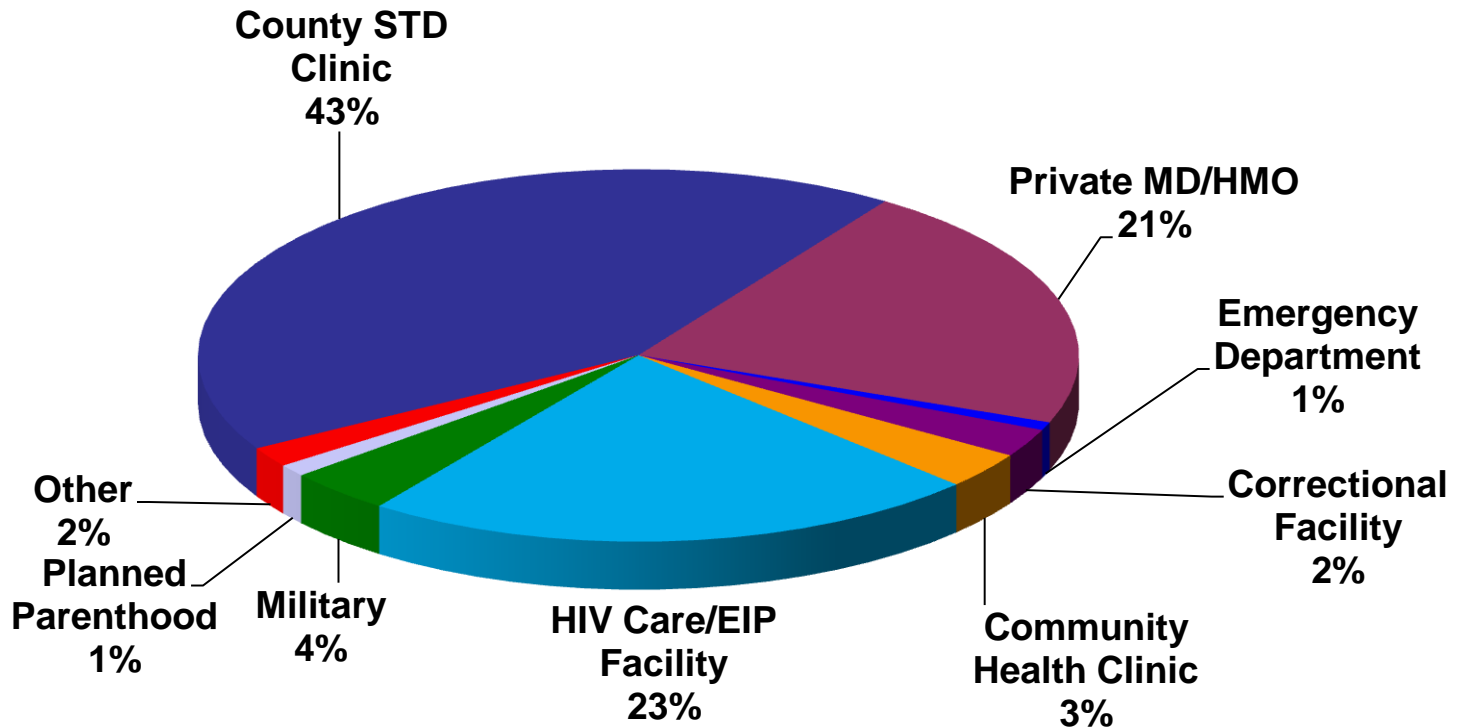
MSM Primary & Secondary Syphilis Cases Co-Infected with HIV by Year – San Diego County, 2000 - 2011



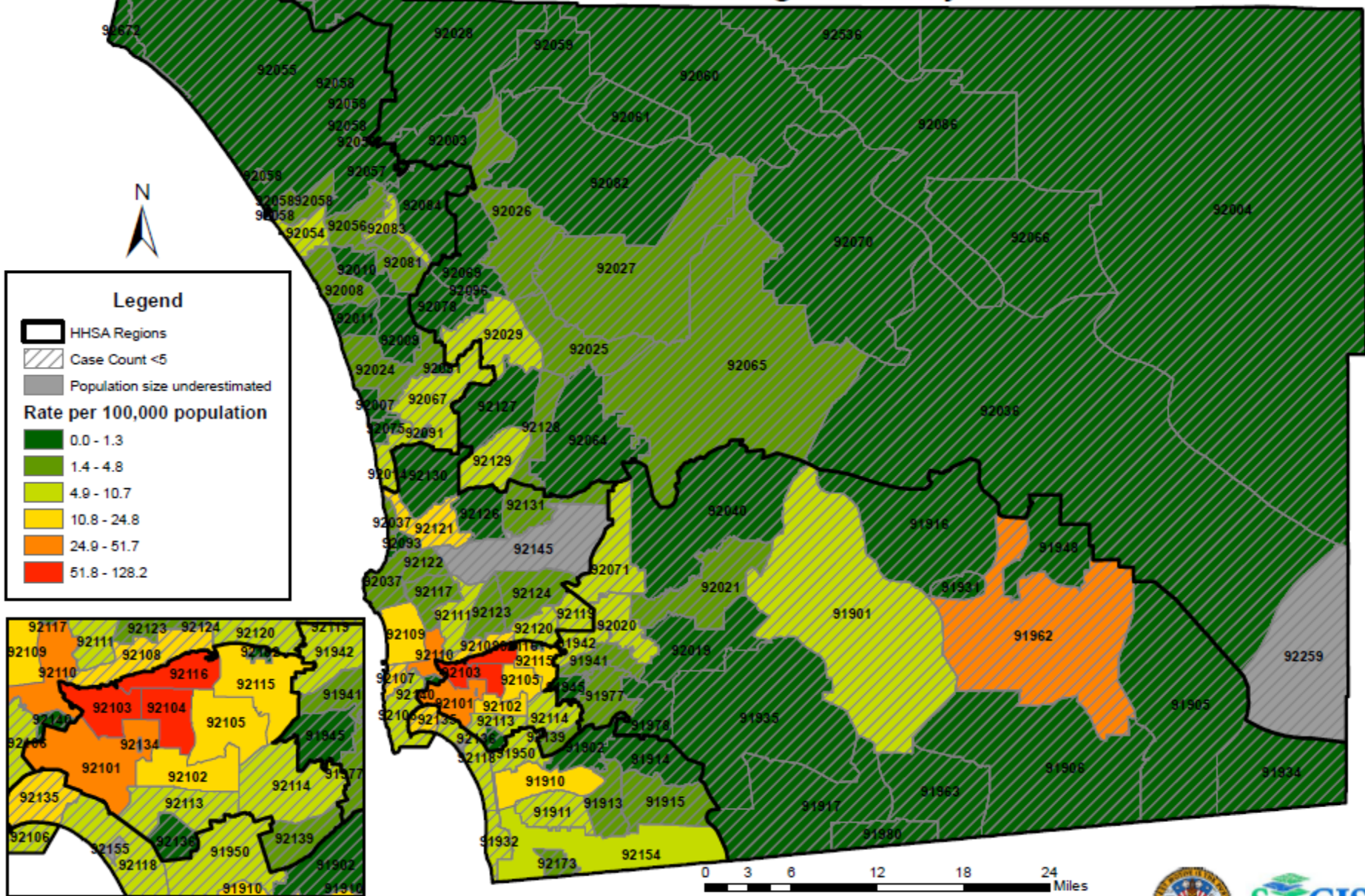
Meeting Venues, Interviewed MSM Primary & Secondary Syphilis Cases – San Diego County, 2001 – 2011



Primary & Secondary Syphilis Cases Reported by Provider Type, San Diego County, 2010



Primary and Secondary Syphilis Rates by Zip Code San Diego County, 2011



Source: County of San Diego, Health and Human Services Agency, HIV, STD and Hepatitis Branch, Syphilis Case Data
 Map Date: August 14, 2012
 Contact: Marjorie Lee

