



# County of San Diego Monthly STD Report

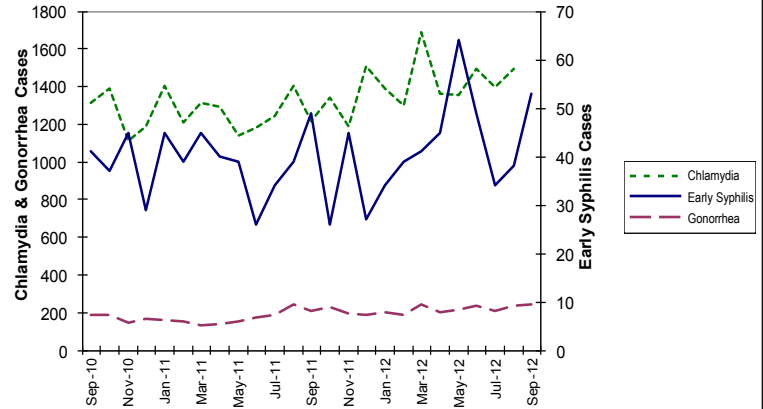
Issue No. 45: Data through September 30, 2012; Report released January 3, 2013.



Table 1. STDs reported among San Diego County residents, by month (September 2012) and year-to-date.

Table with 5 columns: STD Type, 2011 Sep, 2011 YTD, 2012 Sep, 2012 YTD. Rows include Chlamydia\*, Gonorrhea, Early Syphilis, and HIV Infection\*\*\*.

Figure 1. Chlamydia,\* early syphilis\*\* and gonorrhea cases reported among San Diego County residents, by month.



\*Chlamydia data through August 2012 due to data entry delay. \*\*Early syphilis includes primary, secondary and early latent syphilis.

YTD: Year to Date

\*Chlamydia data through August 2012 due to data entry delay, with comparison data through August 2011.

\*\*Includes confirmed and probable cases of neurosyphilis among cases of early syphilis only.

\*\*\*New infections are reported either as HIV or, if an individual was also diagnosed with AIDS within one month, as AIDS.

Table 2. Selected STD cases and annualized rates per 100,000 population for San Diego County, by age and race/ethnicity, year-to-date, 2012.

Table with 10 columns: STD Type, All races\*\* (cases, rate), Asian/PI (cases, rate), Black (cases, rate), Hispanic (cases, rate), White (cases, rate). Rows include All ages and Under 20 yrs for Chlamydia, Gonorrhea, and Early syphilis.

Note: Rates calculated using 2012 SANDAG population estimates.

\*Chlamydia data through August 2012 due to data entry delay.

\*\*Includes cases denoted as "other" or "unknown" and for which no race/ethnicity data are specified.

### Key Points comparing YTD cases reported through September 2011 to September 2012.

- Chlamydia has increased 13%\*. - Female (18-25) chlamydia has increased 10%\*. - Female (<=17) chlamydia has decreased 35%\*. - Male rectal chlamydia has increased 34%\*.
Gonorrhea has increased 27%. - Female (18-25) gonorrhea has increased 49%. - Female (<=17) gonorrhea has decreased 29%. - Male rectal gonorrhea has increased 9%.
Early syphilis has increased 12%.

\*Data compares August 2011 to August 2012.

Note: All data are provisional. Case count is based on the earliest of date of diagnosis, date of specimen collection and treatment date. Totals for past months might change because of delays in reporting from labs and providers.

### Editorial Note: Integration of the County Health Services Complex STD and HIV Testing Clinics

In mid-January, the County Health Services Complex, located at 3851 Rosecrans Street, will consolidate its stand-alone HIV Alternative Testing Site (ATS) into the recently renovated STD Clinic in order to streamline and improve services for all clients.

The integrated STD Clinic will continue to offer comprehensive STD evaluation and treatment, counseling services for HIV and STD prevention, and vaccination for hepatitis A and B.

Court-ordered HIV testing will still be performed at the clinic, but anonymous testing will no longer be offered. Free, anonymous, confidential HIV testing will continue to be offered by County staff at the San Diego LGBT Community Center on Mondays and Wednesdays.

After this transition to integrated services, clients can anticipate decreased waiting times while accessing a greater range of STD and HIV testing services.

