

County of San Diego Monthly STD Report

Volume 13, Issue 12: Data through July 2021; Report released December 27, 2021.



Table 1. STDs Reported Among County of San Diego Residents, by Month and Previous 12 Months Combined.

	2020		2021	
	July	Previous 12-Month Period*	July	Previous 12-Month Period*
Chlamydia	1491	20323	1330	17954
Female age 18-25	559	7668	482	6650
Female age ≤ 17	58	731	46	605
Male rectal chlamydia	97	1137	103	1362
Gonorrhea	527	6094	741	7747
Female age 18-25	80	1003	111	1174
Female age ≤ 17	8	110	9	139
Male rectal gonorrhea	90	706	111	1198
Early Syphilis (adult total)	92	1109	104	1280
Primary	16	168	11	195
Secondary	31	373	34	426
Early latent	45	568	59	659
Congenital syphilis	2	19	5	24

* Cumulative case count of the previous 12 months.

Table 2. Selected STD Cases and Annualized Rates per 100,000 Population for San Diego County by Age and Race/Ethnicity, Year-to-Date.

	All Races*		Asian/PI		Black		Hispanic		White	
	cases	rate	cases	rate	cases	rate	cases	rate	cases	rate
<i>All ages</i>										
Chlamydia	10285	527.4	245	113.8	362	389.6	958	143.7	1143	127.5
Gonorrhea	4788	245.5	141	65.5	377	405.7	775	116.2	885	98.8
Early Syphilis	781	40.0	44	20.4	82	88.2	334	50.1	258	28.8
<i>Under 20 yrs</i>										
Chlamydia	1586	308.1	24	42.3	66	269.7	153	87.0	183	77.5
Gonorrhea	424	82.4	7	12.3	24	98.1	54	30.7	51	21.6
Early Syphilis	12	2.3	0	0.0	2	8.2	6	3.4	3	1.3

Note: Rates are calculated using 2020 Population Estimates; County of San Diego, Health and Human Services Agency, Public Health Services Division, Community Health Statistics Unit. 8/2021.

* Includes cases designated as "other," "unknown," or missing race/ethnicity.

Note: All data are provisional. Case counts are based on the earliest of date of diagnosis, date of specimen collection, and treatment date. Totals for past months might change because of delays in reporting from labs and providers.

Figure 1. Chlamydia and Gonorrhea Reported Among County of San Diego Residents, by 3-Month Period.

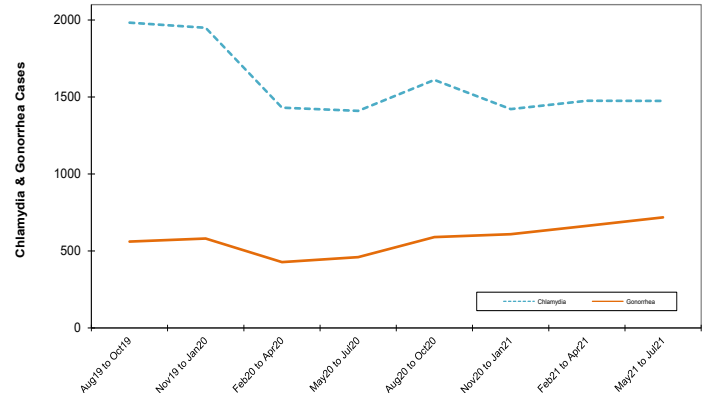
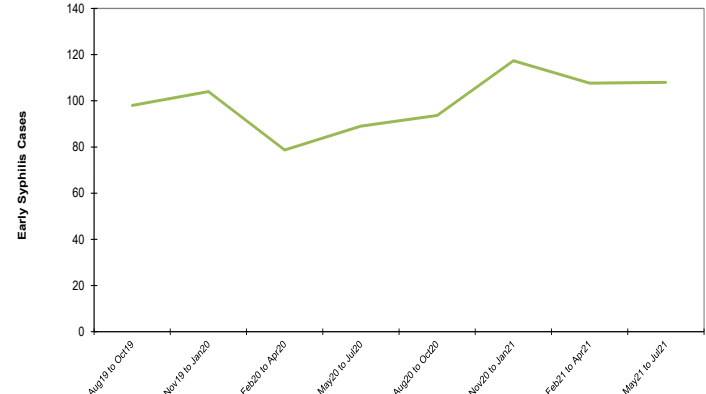


Figure 2. Early Syphilis Reported Among County of San Diego Residents, by 3-Month Period.



Editorial Note: FDA Approves Injectable Cabotegravir for HIV-1 Pre-exposure Prophylaxis

On December 20, 2021, the Food and Drug Administration (FDA) approved an extended-release injectable suspension of the integrase strand transfer inhibitor cabotegravir (APRETUDE) for intramuscular use for human immunodeficiency virus-1 (HIV-1) pre-exposure prophylaxis (PrEP). The first injectable agent for HIV-1 PrEP, APRETUDE is indicated for adults and adolescents weighing at least 35 kg who have a negative test for HIV-1 [1]. Two clinical trials, one conducted with cis men who have sex with men (MSM) and transgender women, and another conducted with ciswomen, demonstrated high efficacy and safety for injections every two months for PrEP [2][3].

The U.S. Public Health Service (PHS) recently released PrEP clinical guidelines that recommend PrEP with intramuscular cabotegravir, conditional on FDA approval, for HIV prevention in adults reporting sexual behaviors that place them at substantial ongoing risk of HIV exposure and acquisition (IA recommendation). The guidelines also include cabotegravir-specific recommendations, since it has a different dosing and recommended follow-up schedule than oral PrEP medications [4].

PrEP to prevent HIV infection is one of the primary strategies of the County of San Diego's Getting to Zero initiative to end the HIV epidemic in the region. By adding a PrEP option that does not require daily oral medication, injectable cabotegravir has the potential to extend the benefits of PrEP to people who experience barriers to adhering to a daily oral medication.

APRETUDE may be initiated with or without an oral lead-in. After two initiation injections given consecutively one month apart, the recommended continuation injection dose of APRETUDE is a single 600-mg (3-mL) intramuscular injection every two months. More detailed guidance, including how to manage missed injections, is available in the [FDA announcement](#) and the [PHS PrEP guidelines](#).