

# County of San Diego Monthly STD Report

Volume 14, Issue 10: Data through May 2022; Report released November 29, 2022.



**Table 1. STDs Reported Among County of San Diego Residents, by Month and Previous 12 Months Combined.**

	2021		2022	
	May	Previous 12-Month Period*	May	Previous 12-Month Period*
Chlamydia	1474	18041	1442	18172
Female age 18-25	525	6719	521	6438
Female age ≤ 17	54	615	48	607
Male rectal chlamydia	114	1333	107	1659
Gonorrhea	685	7289	629	8090
Female age 18-25	108	1108	96	1260
Female age ≤ 17	14	134	10	119
Male rectal gonorrhea	111	1094	121	1473
Early Syphilis (adult total)	102	1241	97	1157
Primary	9	197	18	177
Secondary	35	425	36	382
Early latent	58	619	43	598
Congenital syphilis	3	14	3	39

\* Cumulative case count of the previous 12 months.

**Table 2. Selected STD Cases and Annualized Rates per 100,000 Population for San Diego County by Age and Race/Ethnicity, Year-to-Date.**

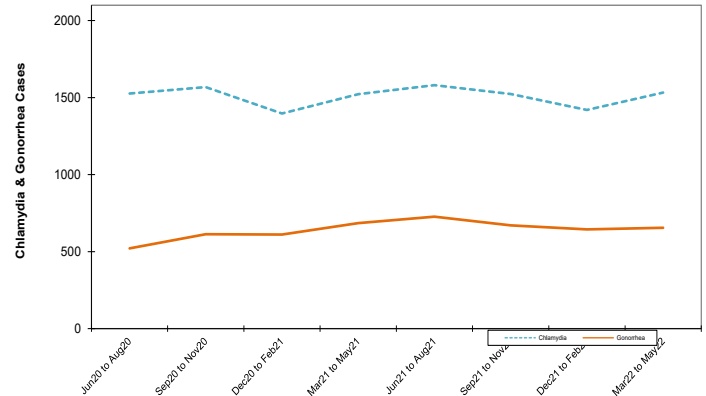
	All Races*		Asian/PI		Black		Hispanic		White	
	cases	rate	cases	rate	cases	rate	cases	rate	cases	rate
<i>All ages</i>										
Chlamydia	7408	531.8	205	133.3	222	334.5	710	149.1	800	125.0
Gonorrhea	3271	234.8	85	55.3	203	305.9	453	95.1	538	84.0
Early Syphilis	462	33.2	24	15.6	39	58.8	187	39.3	147	23.0
<i>Under 20 yrs</i>										
Chlamydia	1088	295.9	29	71.5	44	251.7	110	87.5	96	56.9
Gonorrhea	304	82.7	3	7.4	31	177.4	46	36.6	24	14.2
Early Syphilis	7	1.9	1	2.5	2	11.4	3	2.4	1	0.6

Note: Rates are calculated using 2020 Population Estimates; County of San Diego, Health and Human Services Agency, Public Health Services Division, Community Health Statistics Unit. 8/2021.

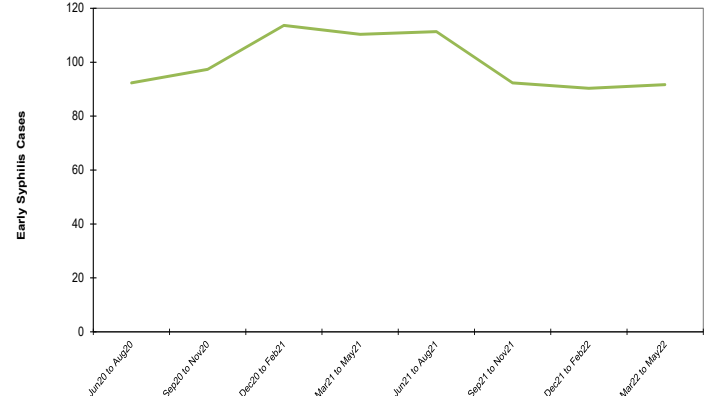
\* Includes cases designated as "other," "unknown," or missing race/ethnicity.

**Note: All data are provisional.** Case counts are based on the earliest of date of diagnosis, date of specimen collection, and treatment date. Totals for past months might change because of delays in reporting from labs and providers.

**Figure 1. Chlamydia and Gonorrhea Reported Among County of San Diego Residents, by 3-Month Period.**



**Figure 2. Early Syphilis Reported Among County of San Diego Residents, by 3-Month Period.**



## Editorial Note: Monkeypox Cases Are Declining in San Diego County

Since the first case of human monkeypox (MPX) was reported in San Diego County in June 2022, a total of 452 cases have been reported in the region as of November 19, 2022. Cases of MPX in San Diego County have declined from a peak of 60 cases, reported during the week ending on August 6, 2022, to one case, reported during the week ending on November 5, 2022 (data for later weeks may be incomplete) [1]. These declining cases mirror state and national trends and are likely attributable to local efforts to make vaccination available to those who are vulnerable to MPX and steps that people have taken to protect themselves against the MPX virus [2].

The two-dose JYNNEOS MPX/smallpox vaccine is available at multiple sites throughout San Diego County to the following groups:

- Gay or bisexual men, or any men or transgender people who have sex with men or transgender people
- Persons of any gender or sexual orientation who engage in commercial and/or transactional sex (e.g., sex in exchange for money, shelter, food, or other goods and needs)
- Persons living with HIV, especially in persons with uncontrolled or advanced HIV disease
- Persons who had skin-to-skin or intimate contact with someone with suspected or confirmed MPX, including those who have not yet been confirmed by Public Health [3].

For additional resources, including guidance about testing for MPX virus, reporting of confirmed and probable MPX cases, indications for tecovirimat, and other supportive measures, please visit the [County of San Diego MPOX Resources for Healthcare Professionals page](#).

County of San Diego STD Clinics: [www.STDSanDiego.org](http://www.STDSanDiego.org)  
 Phone: (619) 692-8550 Fax: (619) 692-8543  
 STD Clinical Consultation Line: (619) 609-3245 (8am-5pm, M-F)



Provider STD Reporting: (619) 692-8520; fax (619) 692-8541  
 Sign up to receive Monthly STD Reports, email [STD@sdcountry.ca.gov](mailto:STD@sdcountry.ca.gov)