

County of San Diego Monthly STD Report

Volume 14, Issue 12: Data through July 2022; Report released December 27, 2022.



Table 1. STDs Reported Among County of San Diego Residents, by Month and Previous 12 Months Combined.

	2021		2022	
	Jul	Previous 12-Month Period*	Jul	Previous 12-Month Period*
Chlamydia	1474	18166	1290	17782
Female age 18-25	530	6710	421	6240
Female age ≤ 17	48	609	38	574
Male rectal chlamydia	120	1392	122	1672
Gonorrhea	743	7730	612	7866
Female age 18-25	111	1170	78	1224
Female age ≤ 17	9	140	8	107
Male rectal gonorrhea	129	1212	125	1466
Early Syphilis (adult total)	103	1285	90	1100
Primary	12	197	19	182
Secondary	34	432	23	354
Early latent	57	656	48	564
Congenital syphilis	5	21	2	36

* Cumulative case count of the previous 12 months.

Table 2. Selected STD Cases and Annualized Rates per 100,000 Population for San Diego County by Age and Race/Ethnicity, Year-to-Date.

	All Races*		Asian/PI		Black		Hispanic		White	
	cases	rate	cases	rate	cases	rate	cases	rate	cases	rate
<i>All ages</i>										
Chlamydia	10155	520.7	281	130.6	297	319.6	1017	152.5	1068	119.2
Gonorrhea	4511	231.3	114	53.0	270	290.6	673	100.9	715	79.8
Early Syphilis	635	32.6	33	15.3	56	60.3	271	40.6	193	21.5
<i>Under 20 yrs</i>										
Chlamydia	1427	277.2	39	68.7	51	208.4	156	88.7	122	51.7
Gonorrhea	378	73.4	6	10.6	38	155.3	61	34.7	27	11.4
Early Syphilis	12	2.3	1	1.8	2	8.2	7	4.0	2	0.8

Note: Rates are calculated using 2020 Population Estimates; County of San Diego, Health and Human Services Agency, Public Health Services Division, Community Health Statistics Unit. 8/2021.

* Includes cases designated as "other," "unknown," or missing race/ethnicity.

Note: All data are provisional. Case counts are based on the earliest of date of diagnosis, date of specimen collection, and treatment date. Totals for past months might change because of delays in reporting from labs and providers.

Figure 1. Chlamydia and Gonorrhea Reported Among County of San Diego Residents, by 3-Month Period.

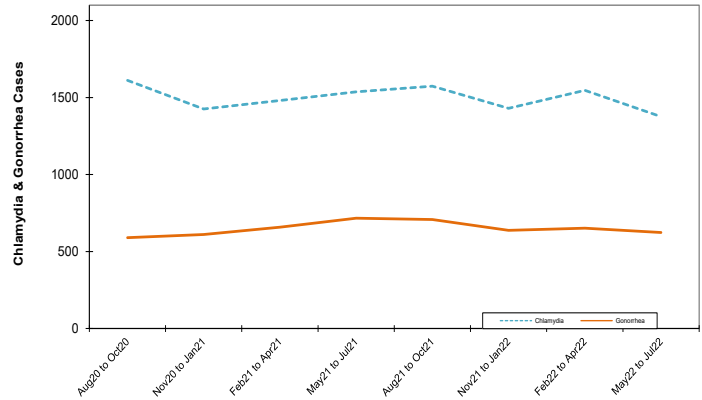
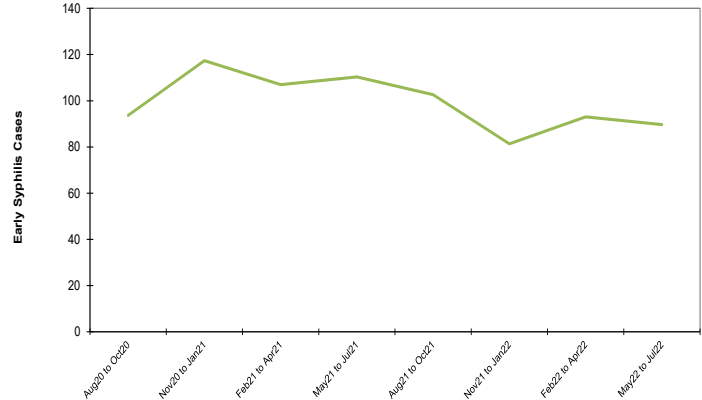


Figure 2. Early Syphilis Reported Among County of San Diego Residents, by 3-Month Period.



Editorial Note: Updated California STI Screening and Treatment Guidelines

Updated guidelines for screening and treatment of sexually transmitted infections (STIs) are now available through the California Department of Public Health (CDPH) and the California Prevention Training Center. These include:

- [California STI Screening Recommendations \(PDF\)](#)
- [California STI/HIV Screening Recommendations in Pregnancy \(PDF\)](#)
- [California STI Treatment Recommendations in Pregnancy \(PDF\)](#)
- [California STI Treatment Guidelines for Adults and Adolescents \(PDF\)](#)

These updated recommendations and other clinical tools and resources are also available at the [STD Control Branch – Clinical Guidelines and Job Aids](#) webpage. These recommendations align with the [2021 Centers for Disease Control and Prevention \(CDC\) STI Treatment Guidelines](#) and recommendations from the United States Preventive Services Task Force, Infectious Diseases Society of America, and the CDPH STD Control Branch.

Laminated hard copies of these resources are available by contacting us at STD@sdcounty.ca.gov.

As 2022 comes to a close, the HIV, STD, and Hepatitis Branch of Public Health Services, in the County of San Diego Health and Human Services Agency, would like to thank you for being a valued partner in STI prevention and for striving to maintain and improve the sexual health of San Diegans. Happy holidays to you and your loved ones, and best wishes for 2023!

County of San Diego STD Clinics: www.STDSanDiego.org
 Phone: (619) 692-8550 Fax: (619) 692-8543
 STD Clinical Consultation Line: (619) 609-3245 (8am-5pm, M–)



Provider STD Reporting: (619) 692-8520; fax (619) 6928541
 Sign up to receive Monthly STD Reports,
 email STD@sdcounty.ca.gov