

County of San Diego Monthly STD Report

Volume 15, Issue 4: Data through November, 2022; Report released May 2, 2023.



Table 1. STDs Reported Among County of San Diego Residents, by Month and Previous 12 Months Combined.

	2021		2022	
	Nov	Previous 12-Month Period*	Nov	Previous 12-Month Period*
Chlamydia	1455	18070	1484	17829
Female age 18-25	499	6500	481	6153
Female age ≤ 17	47	596	42	543
Male rectal chlamydia	146	1539	136	1649
Gonorrhea	602	8080	651	7692
Female age 18-25	99	1263	75	1109
Female age ≤ 17	6	136	8	100
Male rectal gonorrhea	109	1390	157	1539
Early Syphilis (adult total)	74	1283	71	1076
Primary	11	203	10	185
Secondary	31	428	21	330
Early latent	32	652	40	561
Congenital syphilis	2	29	2	29

* Cumulative case count of the previous 12 months.

Table 2. Selected STD Cases and Annualized Rates per 100,000 Population for San Diego County by Age and Race/Ethnicity, Year-to-Date.

	All Races*		Asian/PI		Black		Hispanic		White	
	cases	rate	cases	rate	cases	rate	cases	rate	cases	rate
<i>All ages</i>										
Chlamydia	16378	538.9	433	129.4	495	341.0	1632	156.5	1726	124.0
Gonorrhea	7066	232.5	185	55.3	430	296.2	1140	109.3	1127	81.0
Early Syphilis	993	32.7	51	15.2	100	68.9	435	41.7	291	20.9
<i>Under 20 yrs</i>										
Chlamydia	2193	270.2	50	66.5	84	212.1	226	65.2	189	62.6
Gonorrhea	531	65.4	9	12.0	52	131.3	86	24.8	47	15.6
Early Syphilis	20	2.5	1	1.3	2	5.0	12	3.5	3	1.0

Note: Rates are calculated using 2021 Population Estimates; County of San Diego, Health and Human Services Agency, Public Health Services Division, Community Health Statistics Unit. 9/2022.

* Includes cases designated as "other," "unknown," or missing race/ethnicity.

Note: All data are provisional. Case counts are based on the earliest of date of diagnosis, date of specimen collection, and treatment date. Totals for past months might change because of delays in reporting from labs and providers.

Figure 1. Chlamydia and Gonorrhea Reported Among County of San Diego Residents, by 3-Month Period.

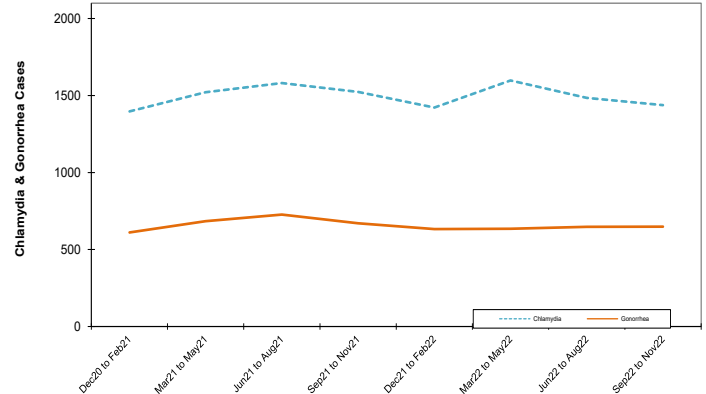
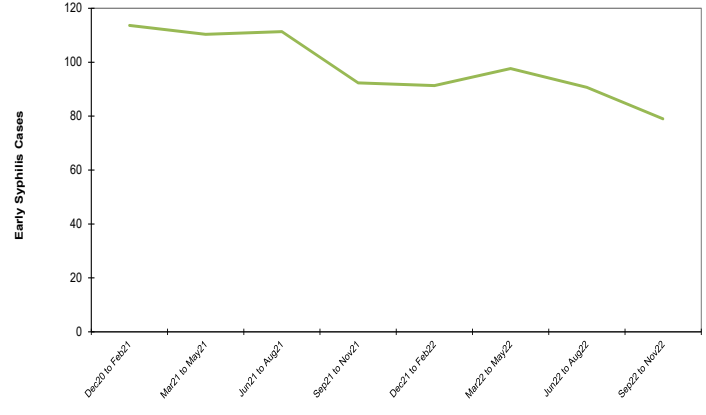


Figure 2. Early Syphilis Reported Among County of San Diego Residents, by 3-Month Period.



Editorial Note: Potential Access Challenges to Bicillin L-A[®]

The United States Food and Drug Administration (FDA) has announced a [shortage of benzathine penicillin G long-acting \(Bicillin L-A[®]\)](#), the recommended first-line agent for most stages of syphilis (excluding neurosyphilis, ocular syphilis, and otosyphilis) and the only recommended treatment for syphilis in pregnancy. Pfizer, the sole producer of Bicillin L-A[®], has attributed the shortage to increased demand due to nationwide increases in syphilis and Group A β -hemolytic streptococcal pharyngitis. According to the FDA, the shortage may persist until the fourth quarter of 2023. As outlined in a [recent health alert](#) issued by the County of San Diego Health and Human Services Agency, providers are urged to do the following to mitigate the effects of this shortage on the health of San Diego County residents:

- 1. Monitor** inventory of Bicillin L-A[®] at your institution.
- 2. Prioritize** the use of Bicillin L-A[®] to treat: 1) pregnant people infected with or exposed to syphilis and their partners; 2) babies with congenital syphilis; and 3) persons with allergy or other contraindication to doxycycline (or who are unable to adhere to doxycycline). If supply is adequate to expand use of the medication, other groups to be prioritized include the following (in descending order):
 - Cases of primary and secondary syphilis (including those with positive darkfield microscopy)
 - Cases who meet CDC criteria for early latent syphilis
 - Cases of late latent syphilis or syphilis of unknown duration with high non-treponemal titer (i.e., 1:8 or higher)
 - Cases of late latent syphilis or syphilis of unknown duration with low non-treponemal titer (i.e., 1:4 or lower)

County of San Diego STD Clinics: www.STDSanDiego.org
 Phone: (619) 692-8550 Fax: (619) 692-8543
 STD Clinical Consultation Line: (619) 609-3245 (8am-5pm, M-F)



Provider STD Reporting: (619) 692-8520; fax (619) 692-8541
 Sign up to receive Monthly STD Reports,
 email STD@sdcounty.ca.gov

County of San Diego Monthly STD Report

Volume 15, Issue 4: Data through November, 2022; Report released May 2, 2023.



Editorial Note (Continued) :

3. **Test** for syphilis in persons who present with compatible signs and symptoms and **screen** for syphilis in the absence of signs and symptoms based on [CDC recommendations](#). Screen pregnant persons for syphilis at least twice during pregnancy, including at the first prenatal visit and at 28-32 weeks gestation. Screen at delivery unless the patient had a negative third trimester screen and is not at increased risk of syphilis acquisition [1].
4. **Notify** the HIV, STD, and Hepatitis Branch (HSHB) of Public Health Services of any shortages or low inventories of Bicillin L-A[®]. You may also contact HSHB for assistance obtaining Bicillin L-A[®] for situations with no alternative treatment options.
5. **Avoid** using Bicillin L-A[®] for conditions other than syphilis (e.g., Group A β -hemolytic streptococcal pharyngitis, primary and secondary rheumatic fever prophylaxis) unless a patient cannot take oral medications. Do not give extra doses of Bicillin L-A[®] in addition to what is recommended by CDC.
6. **Report** all cases of syphilis within 24 hours of diagnosis to HSHB by faxing a Confidential Morbidity Report to (619) 692-8541 or via encrypted e-mail to PHS-HSHB-STDReporting-Fax.HHSA@sdcounty.ca.gov.

