

# County of San Diego Monthly STD Report

Volume 15, Issue 6: Data through January 2023; Report released July 10, 2023.



**Table 1. STDs Reported Among County of San Diego Residents, by Month and Previous 12 Months Combined.**

	2022		2023	
	Jan	Previous 12-Month Period*	Jan	Previous 12-Month Period*
Chlamydia	1409	18089	1384	18116
Female age 18-25	503	6453	475	6243
Female age ≤ 17	48	610	44	527
Male rectal chlamydia	136	1605	130	1677
Gonorrhea	672	8151	628	7748
Female age 18-25	112	1273	80	1081
Female age ≤ 17	9	133	2	93
Male rectal gonorrhea	127	1428	131	1598
Early Syphilis (adult total)	85	1206	66	1079
Primary	9	174	13	195
Secondary	24	395	18	319
Early latent	52	637	35	565
Congenital syphilis	2	30	3	34

\* Cumulative case count of the previous 12 months.

**Table 2. Selected STD Cases and Annualized Rates per 100,000 Population for San Diego County by Age and Race/Ethnicity, Year-to-Date.**

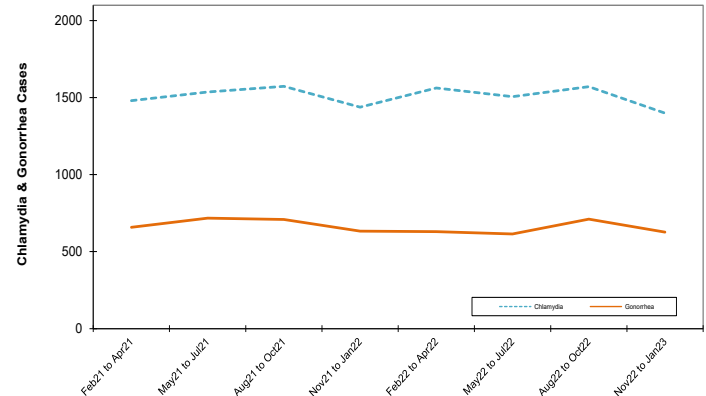
	All Races*		Asian/PI		Black		Hispanic		White	
	cases	rate	cases	rate	cases	rate	cases	rate	cases	rate
<i>All ages</i>										
Chlamydia	1384	500.9	35	115.0	42	318.3	142	149.8	133	105.1
Gonorrhea	628	227.3	18	59.2	39	295.5	100	105.5	94	74.3
Early Syphilis	66	23.9	2	6.6	9	68.2	31	32.7	16	12.6
<i>Under 20 yrs</i>										
Chlamydia	197	267.0	3	43.9	12	333.3	20	63.5	20	72.9
Gonorrhea	27	36.6	0	0.0	4	111.1	6	19.0	1	3.6
Early Syphilis	2	2.7	1	14.6	0	0.0	1	3.2	0	0.0

Note: Rates are calculated using 2021 Population Estimates; County of San Diego, Health and Human Services Agency, Public Health Services Division, Community Health Statistics Unit. 9/2022.

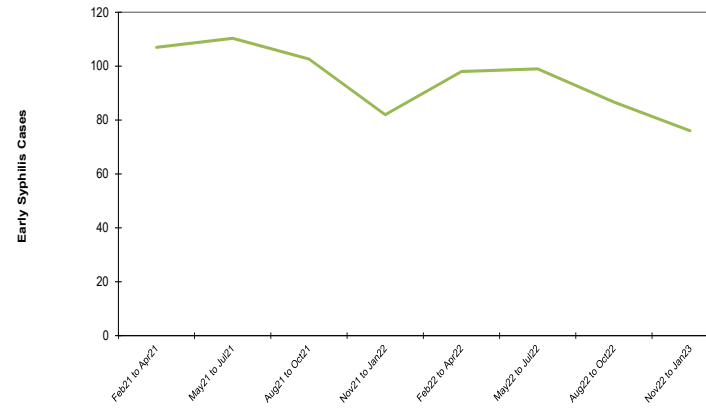
\* Includes cases designated as "other," "unknown," or missing race/ethnicity.

**Note: All data are provisional.** Case counts are based on the earliest of date of diagnosis, date of specimen collection, and treatment date. Totals for past months might change because of delays in reporting from labs and providers.

**Figure 1. Chlamydia and Gonorrhea Reported Among County of San Diego Residents, by 3-Month Period.**



**Figure 2. Early Syphilis Reported Among County of San Diego Residents, by 3-Month Period.**



## Editorial Note: STD Clinic Location Change and Continued Bicillin® L-A Shortage

**STD Clinic Location Change:** On Friday, July 21, 2023, the Sexually Transmitted Diseases (STD) clinic that currently operates at the [Central Region Public Health Center](#) (CRPHC, 5202 University Avenue, San Diego, CA 92105) will move to the new [Southeastern Live Well Center](#) (SELWC, 5101 Market Street, San Diego, CA 92114). STD clinic will be held at CRPHC on July 21, 2023, but the clinic will stop accepting new clients at 1:30pm or earlier if capacity is reached. Effective Monday, July 24, 2023, the CRPHC will be closed permanently. The first SELWC STD clinic will take place on Tuesday, July 25, 2023, and the STD clinic at the Southeastern location will have the same hours of operation as the current Central clinic (9:00am-4:00pm on Tuesday, Wednesday, and Friday). This information is subject to change; please visit [www.stdsandiego.org](http://www.stdsandiego.org) for updates and the most current clinic information.

**Continued Bicillin® L-A Shortage:** The nationwide shortage of Bicillin® L-A, previously reported in [Vol 15, Issue 4](#) of this report and via a California Health Alert Network (CAHAN) advisory on [April 25, 2023](#), continues, with estimated recovery in the [second quarter of 2024](#) (see CAHAN health advisory from [June 15, 2023](#)). Providers are reminded to monitor Bicillin® L-A inventory closely and to ensure continued availability of Bicillin® L-A for patients for whom there is no alternative treatment for syphilis (e.g., pregnant persons) by continuing to follow the recommendations outlined in recent communications.