

County of San Diego Monthly STD Report

Volume 15, Issue 7: Data through February 2023; Report released August 4, 2023.



Table 1. STDs Reported Among County of San Diego Residents, by Month and Previous 12 Months Combined.

	2022		2023	
	Feb	Previous 12-Month Period*	Feb	Previous 12-Month Period*
Chlamydia	1404	18143	1328	18040
Female age 18-25	493	6448	447	6197
Female age ≤ 17	50	614	50	527
Male rectal chlamydia	139	1624	145	1683
Gonorrhea	598	8143	528	7677
Female age 18-25	93	1270	81	1069
Female age ≤ 17	10	125	3	86
Male rectal gonorrhea	119	1451	111	1590
Early Syphilis (adult total)	102	1216	56	1040
Primary	19	175	9	186
Secondary	45	408	21	299
Early latent	38	633	26	555
Congenital syphilis	2	32	4	36

* Cumulative case count of the previous 12 months.

Table 2. Selected STD Cases and Annualized Rates per 100,000 Population for San Diego County by Age and Race/Ethnicity, Year-to-Date.

	All Races*		Asian/PI		Black		Hispanic		White	
	cases	rate	cases	rate	cases	rate	cases	rate	cases	rate
<i>All ages</i>										
Chlamydia	2712	490.8	72	118.3	71	269.0	283	149.3	281	111.0
Gonorrhea	1155	209.0	33	54.2	56	212.2	171	90.2	171	67.6
Early Syphilis	130	23.5	3	4.9	14	53.0	63	33.2	36	14.2
<i>Under 20 yrs</i>										
Chlamydia	385	260.9	5	36.6	20	277.7	37	58.7	47	85.7
Gonorrhea	60	40.7	0	0.0	5	69.4	11	17.4	2	3.6
Early Syphilis	4	2.7	1	7.3	1	13.9	2	3.2	0	0.0

Note: Rates are calculated using 2021 Population Estimates; County of San Diego, Health and Human Services Agency, Public Health Services Division, Community Health Statistics Unit. 9/2022.

* Includes cases designated as "other," "unknown," or missing race/ethnicity.

Note: All data are provisional. Case counts are based on the earliest of date of diagnosis, date of specimen collection, and treatment date. Totals for past months might change because of delays in reporting from labs and providers.

Figure 1. Chlamydia and Gonorrhea Reported Among County of San Diego Residents, by 3-Month Period.

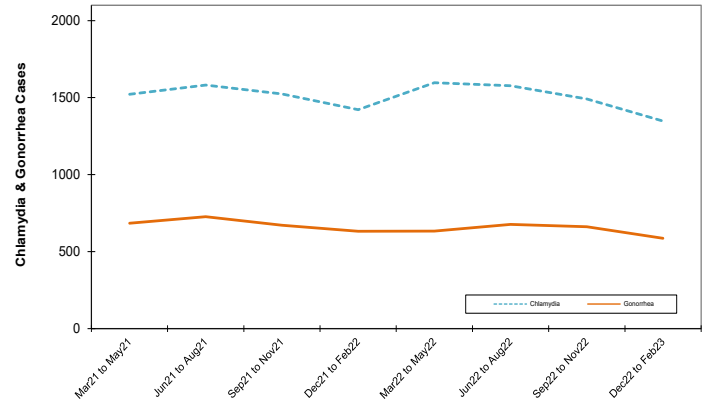
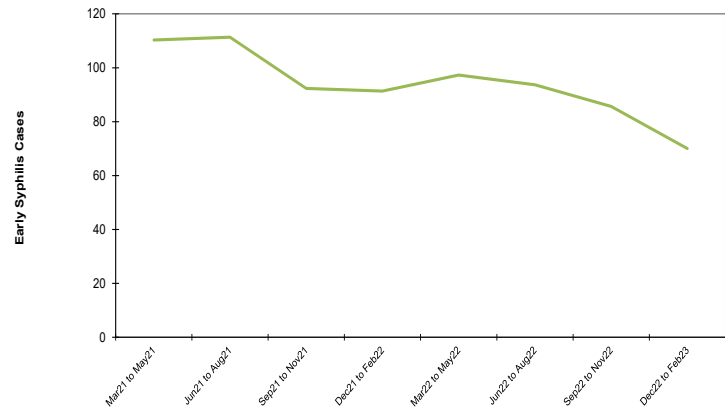


Figure 2. Early Syphilis Reported Among County of San Diego Residents, by 3-Month Period.



Editorial Note: Doxycycline Post-Exposure Prophylaxis (Doxy-PEP) Available in County STD Clinics

Effective August 1, 2023, the Sexually Transmitted Disease (STD) Clinics operated by the County of San Diego Health and Human Services Agency offer doxycycline post-exposure prophylaxis (i.e., doxy-PEP) to eligible clients for prevention of bacterial sexually transmitted infections (STIs). Clinical decision making will align with evidence-based recommendations from the [California Department of Public Health](#) and the [County of San Diego](#). Clients who are started on doxy-PEP will receive a starter pack with 14 tablets of doxycycline hyclate 100 mg (or 7 doses of doxy-PEP) and a written prescription for doxy-PEP.

Doxy-PEP, which involves taking 200 mg of doxycycline ideally within 24 hours and no later than 72 hours following condomless oral, anal, or vaginal intercourse, significantly reduced bacterial STI incidence among people assigned male sex at birth with recent STI in the United States (Seattle and San Francisco) and France [1][2]. Doxy-PEP did not reduce STI incidence among cisgender women in Kisumu, Kenya, most likely due to low levels of adherence (based on recently presented unpublished data) [3]. Further studies of doxy-PEP in cisgender women are needed. Effects of long-term doxycycline use on antimicrobial resistance and the gut microbiome are still under investigation.

With increasing rates of early syphilis and gonorrhea, and continued high rates of chlamydia in the region, new STI prevention strategies are urgently needed. For STD clinic information and the most recent STD data for San Diego County, please visit www.stdsandiego.org.

County of San Diego STD Clinics: www.STDSanDiego.org
 Phone: (619) 692-8550 Fax: (619) 692-8543
 STD Clinical Consultation Line: (619) 609-3245 (8am-5pm, M-F)

Provider STD Reporting: (619) 692-8520; fax (619) 6928541
 Sign up to receive Monthly STD Reports,
 email STD@sdcounty.ca.gov