

# County of San Diego Monthly STD Report

Volume 17, Issue 5: Data through December 2024; Report released May 29, 2025.



**Table 1. STDs Reported Among County of San Diego Residents, by Month and Previous 12 Months Combined.**

	2023		2024	
	December Month Period*	Previous 12-December Month Period*	December Month Period*	Previous 12-December Month Period*
Chlamydia	1215	17509	1124	16092
Female age 18-25	409	5664	366	5332
Female age ≤ 17	47	634	49	567
Male rectal chlamydia	115	1692	71	1191
Gonorrhea	507	6427	430	6030
Female age 18-25	37	709	28	568
Female age ≤ 17	8	89	6	81
Male rectal gonorrhea	127	1510	103	1441
Early Syphilis (adult total)	58	1020	46	699
Primary	8	155	7	106
Secondary	11	304	20	195
Early latent	39	561	19	398
Congenital syphilis	1	35	4	32

\* Cumulative case count of the previous 12 months.

**Table 2. Selected STD Cases and Annualized Rates per 100,000 Population for San Diego County by Age and Race/Ethnicity, Year-to-Date.**

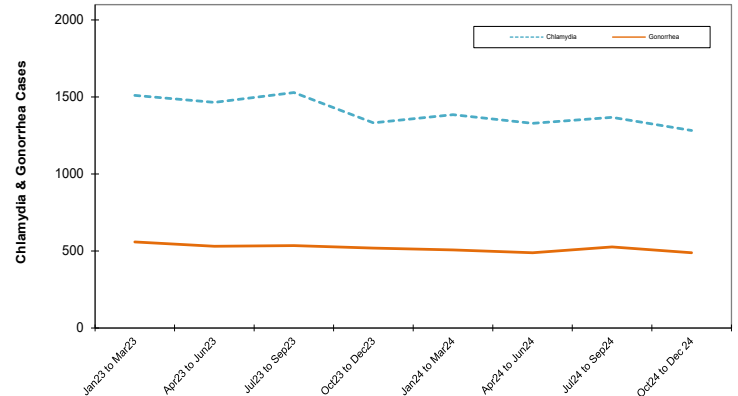
	All Races*		Asian/PI		Black		Hispanic		White	
	cases	rate	cases	rate	cases	rate	cases	rate	cases	rate
All ages										
Chlamydia	16090	489.0	489	117.2	656	424.7	1753	153.2	2104	147.7
Gonorrhea	6030	183.3	230	55.1	390	252.5	1188	332.5	1295	90.9
Early Syphilis	705	21.4	37	8.9	68	44.0	305	26.7	202	14.2
Under 20 yrs										
Chlamydia	2422	295.4	42	48.4	98	258.9	237	66.3	344	121.0
Gonorrhea	404	49.3	5	5.8	32	84.5	72	20.2	50	17.6
Early Syphilis	22	2.7	1	1.2	2	5.3	11	3.1	2	0.7

Note: Rates are calculated using 2023 Population Estimates; County of San Diego, Health and Human Services Agency, Public Health Services Division, Community Health Statistics Unit. 01/2025.

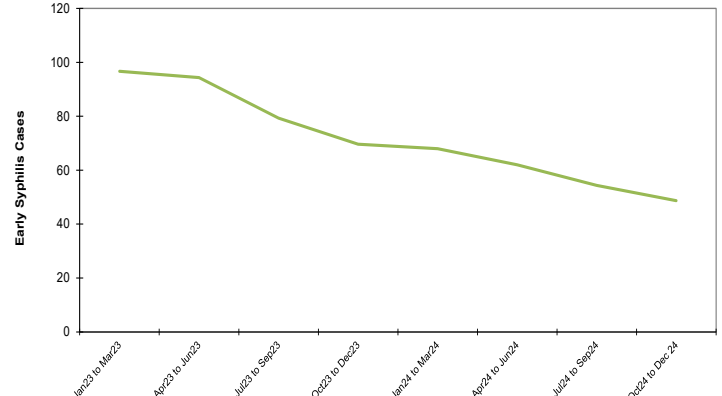
\* Includes cases designated as "other," "unknown," or missing race/ethnicity.

**Note: All data are provisional.** Case counts are based on the earliest of date of diagnosis, date of specimen collection, and treatment date. Totals for past months might change because of delays in reporting from labs and providers.

**Figure 1. Chlamydia and Gonorrhea Reported Among County of San Diego Residents, by 3-Month Period.**



**Figure 2. Early Syphilis Reported Among County of San Diego Residents, by 3-Month Period.**



## CDC Releases New Non-Occupational HIV Post-Exposure Prophylaxis Guidelines

The Centers for Disease Control and Prevention (CDC) has released [updated guidelines](#) for antiretroviral post-exposure prophylaxis after sexual, injection drug use, or other nonoccupational exposure to HIV (i.e., nPEP). Key changes from the 2016 nPEP guidelines include:

- Expanded discussion of nPEP indications, including situations in which the source (e.g., a person with HIV) has consistent viral suppression, in which the person exposed has been taking HIV pre-exposure prophylaxis (PrEP), and in which the known or possible exposure occurred due to sexual assault
- Increased emphasis on the urgency of nPEP initiation, including optimal administration within the first 24 hours
- Recommendation of the following *preferred* regimens for most adults and adolescents:
  - Bictegravir (BIC)/emtricitabine (FTC)/tenofovir alafenamide (TAF) OR
  - Dolutegravir (DTG) plus TAF OR tenofovir disoproxil fumarate (TDF) plus FTC OR lamivudine (3TC)
- Recommendation of diagnostic HIV nucleic acid tests (NATs) along with HIV antigen/antibody (Ag/Ab) tests when initiating nPEP for someone with exposure to long-acting injectable antiretroviral medication in the past 12 months and during follow-up testing for all nPEP recipients at 4-6 weeks and 12 weeks after exposure
- Update to routine follow-up testing of serum creatinine, alanine aminotransferase (ALT), and aspartate aminotransferase (AST), indicating that it is not necessary unless baseline tests are abnormal or other specific clinical indications are present

nPEP clinical consultation is available through the STD clinical consultation line from 8:00am-5:00pm Monday-Friday (excluding County holidays, see bottom left of this document) and through the National Clinical Consultation Center (888-448-4911 or <https://nccc.ucsf.edu/clinician-consultation/pep-post-exposure-prophylaxis>) during the same weekday hours as well as weekends and holidays.

County of San Diego STD Clinics: [www.STDSanDiego.org](http://www.STDSanDiego.org)

Phone: (619) 692-8550 Fax: (619) 692-8543

STD Clinical Consultation Line: (619) 609-3245 (8am-5pm, M-F)



**Provider STD Reporting:** (619) 692-8520; fax (619) 692-8541  
Sign up to receive Monthly STD Reports,  
email [STD@sdcounty.ca.gov](mailto:STD@sdcounty.ca.gov)