

# County of San Diego Monthly STD Report

Volume 17, Issue 7: Data through February 2025; Report released August 1, 2025.



**Table 1. STDs Reported Among County of San Diego Residents, by Month and Previous 12 Months Combined.**

|                              | 2024     |                           | 2025     |                           |
|------------------------------|----------|---------------------------|----------|---------------------------|
|                              | February | Previous 12-Month Period* | February | Previous 12-Month Period* |
| Chlamydia                    | 1323     | 17381                     | 1260     | 15868                     |
| Female age 18-25             | 441      | 5598                      | 418      | 5245                      |
| Female age ≤ 17              | 46       | 633                       | 52       | 585                       |
| Male rectal chlamydia        | 96       | 1650                      | 69       | 1099                      |
| Gonorrhea                    | 487      | 6360                      | 390      | 5842                      |
| Female age 18-25             | 40       | 646                       | 27       | 537                       |
| Female age ≤ 17              | 3        | 90                        | 4        | 80                        |
| Male rectal gonorrhea        | 98       | 1521                      | 95       | 1417                      |
| Early Syphilis (adult total) | 65       | 992                       | 21       | 617                       |
| Primary                      | 9        | 148                       | 4        | 94                        |
| Secondary                    | 18       | 289                       | 6        | 172                       |
| Early latent                 | 38       | 555                       | 11       | 351                       |
| Congenital syphilis          | 5        | 34                        | 4        | 32                        |

\* Cumulative case count of the previous 12 months.

**Table 2. Selected STD Cases and Annualized Rates per 100,000 Population for San Diego County by Age and Race/Ethnicity, Year-to-Date.**

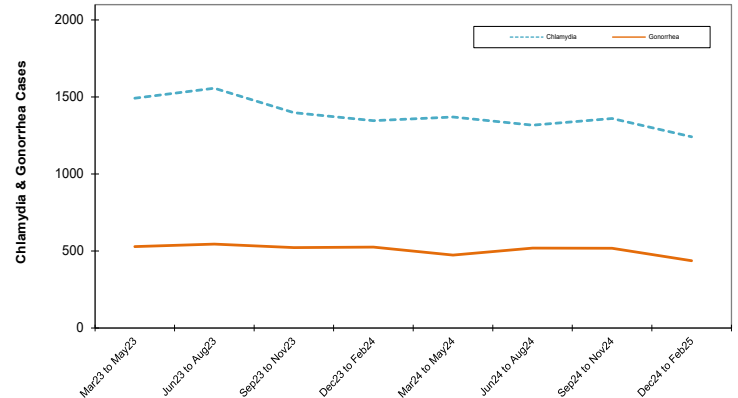
|                | All Races* |       | Asian/PI |      | Black |       | Hispanic |       | White |       |
|----------------|------------|-------|----------|------|-------|-------|----------|-------|-------|-------|
|                | cases      | rate  | cases    | rate | cases | rate  | cases    | rate  | cases | rate  |
| All ages       |            |       |          |      |       |       |          |       |       |       |
| Chlamydia      | 2600       | 474.1 | 67       | 96.3 | 104   | 404.0 | 290      | 152.1 | 349   | 147.0 |
| Gonorrhea      | 880        | 160.5 | 35       | 50.3 | 59    | 229.2 | 198      | 332.5 | 171   | 72.0  |
| Early Syphilis | 61         | 11.1  | 3        | 4.3  | 9     | 35.0  | 27       | 14.2  | 16    | 6.7   |
| Under 20 yrs   |            |       |          |      |       |       |          |       |       |       |
| Chlamydia      | 400        | 292.7 | 2        | 13.8 | 17    | 269.5 | 27       | 45.3  | 55    | 116.1 |
| Gonorrhea      | 41         | 30.0  | 2        | 13.8 | 8     | 126.8 | 6        | 10.1  | 2     | 4.2   |
| Early Syphilis | 1          | 0.7   | 0        | 0.0  | 1     | 15.9  | 0        | 0.0   | 0     | 0.0   |

Note: Rates are calculated using 2023 Population Estimates; County of San Diego, Health and Human Services Agency, Public Health Services Division, Community Health Statistics Unit. 01/2025.

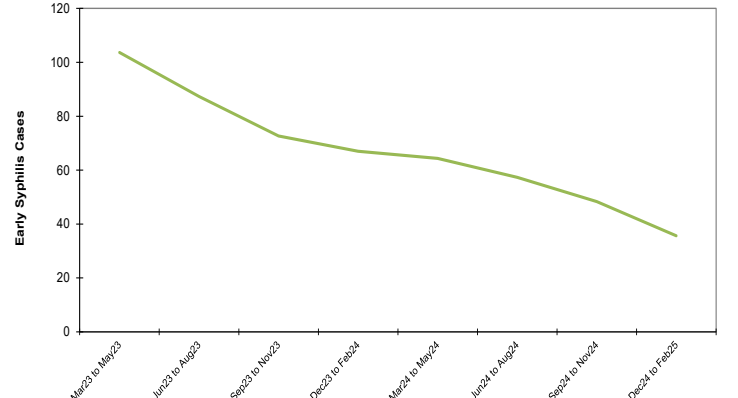
\* Includes cases designated as "other," "unknown," or missing race/ethnicity.

**Note: All data are provisional.** Case counts are based on the earliest of date of diagnosis, date of specimen collection, and treatment date. Totals for past months might change because of delays in reporting from labs and providers.

**Figure 1. Chlamydia and Gonorrhea Reported Among County of San Diego Residents, by 3-Month Period.**



**Figure 2. Early Syphilis Reported Among County of San Diego Residents, by 3-Month Period.**



## Editorial Note: Bicillin® L-A Shortage and Recall

On July 10, 2025, Pfizer announced an anticipated [near-term stockout](#) for long-acting injectable penicillin G benzathine (Bicillin® L-A) 1.2 million units/2mL and 2.4 million units/4mL pre-filled syringes. Further, [Pfizer has recalled multiple lots of Bicillin® L-A](#) distributed from December 11, 2023 through June 24, 2025 due to particulate matter in the syringes. The Food and Drug Administration (FDA) is reporting [limited availability](#) of Bicillin® L-A without a projected resolution date. Two imported forms of long-acting benzylpenicillin, [Extencilline®](#) and [Lentocilin®](#), were approved for temporary importation by the FDA due to prior Bicillin® L-A shortages and remain available.

Recommended actions include the following:

1. **Check your inventory of Bicillin® L-A to determine if your supply includes recalled doses. If so, discontinue use, stop distribution, and quarantine the product immediately.** Follow [Pfizer's instructions](#) to return affected lots.
2. Monitor your inventory of Bicillin® L-A and contact your wholesaler to determine availability. Consider Extencilline® or Lentocilin® if available.
3. **Prioritize use of Bicillin® L-A for pregnant people in need of syphilis treatment, infants exposed to syphilis in utero, and those with an allergy or other medical contraindication to doxycycline.**
  - a. If supply is limited, use [alternative treatments](#) such as doxycycline to treat nonpregnant adults with primary, secondary, early latent or late latent syphilis and contacts to syphilis.
  - b. Use alternative medications to treat Group A streptococcal pharyngitis and for primary prophylaxis for rheumatic fever when possible.
4. Contact the HIV, STD, and Hepatitis Branch if you need assistance (see contact information below).
5. For additional information and resources, please see the [health advisory](#) issued on July 16, 2025 through the California Health Alert Network San Diego and the [health update](#) issued by the California Department of Public Health on July 21, 2025.

County of San Diego STD Clinics: [www.STDSanDiego.org](http://www.STDSanDiego.org)  
Phone: (619) 692-8550 Fax: (619) 692-8543  
STD Clinical Consultation Line: (619) 609-3245 (8am-5pm, M-F)



Provider STD Reporting: (619) 692-8520; fax (619) 692-8541  
Sign up to receive Monthly STD Reports,  
email [STD@sdcounty.ca.gov](mailto:STD@sdcounty.ca.gov)