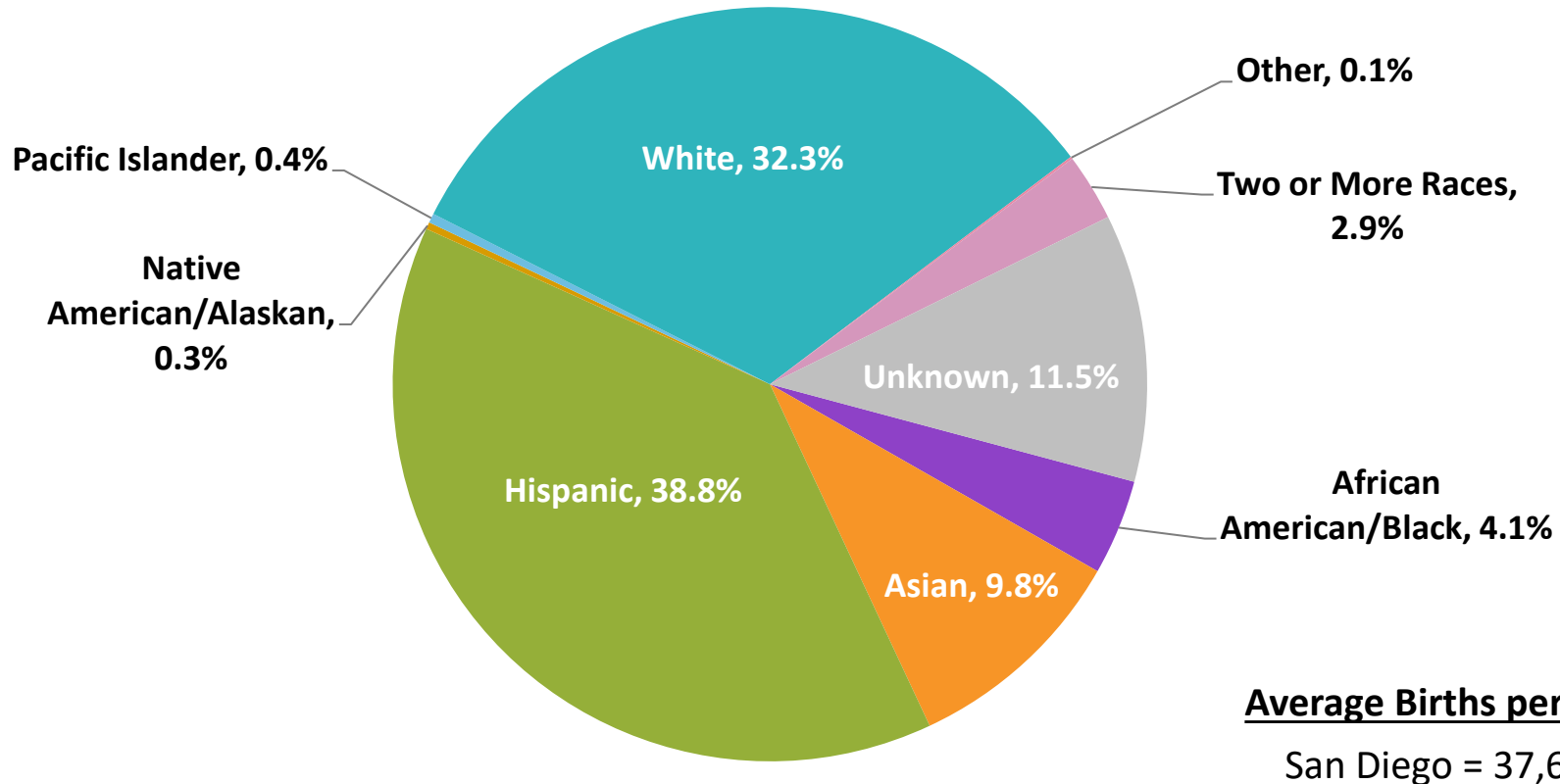


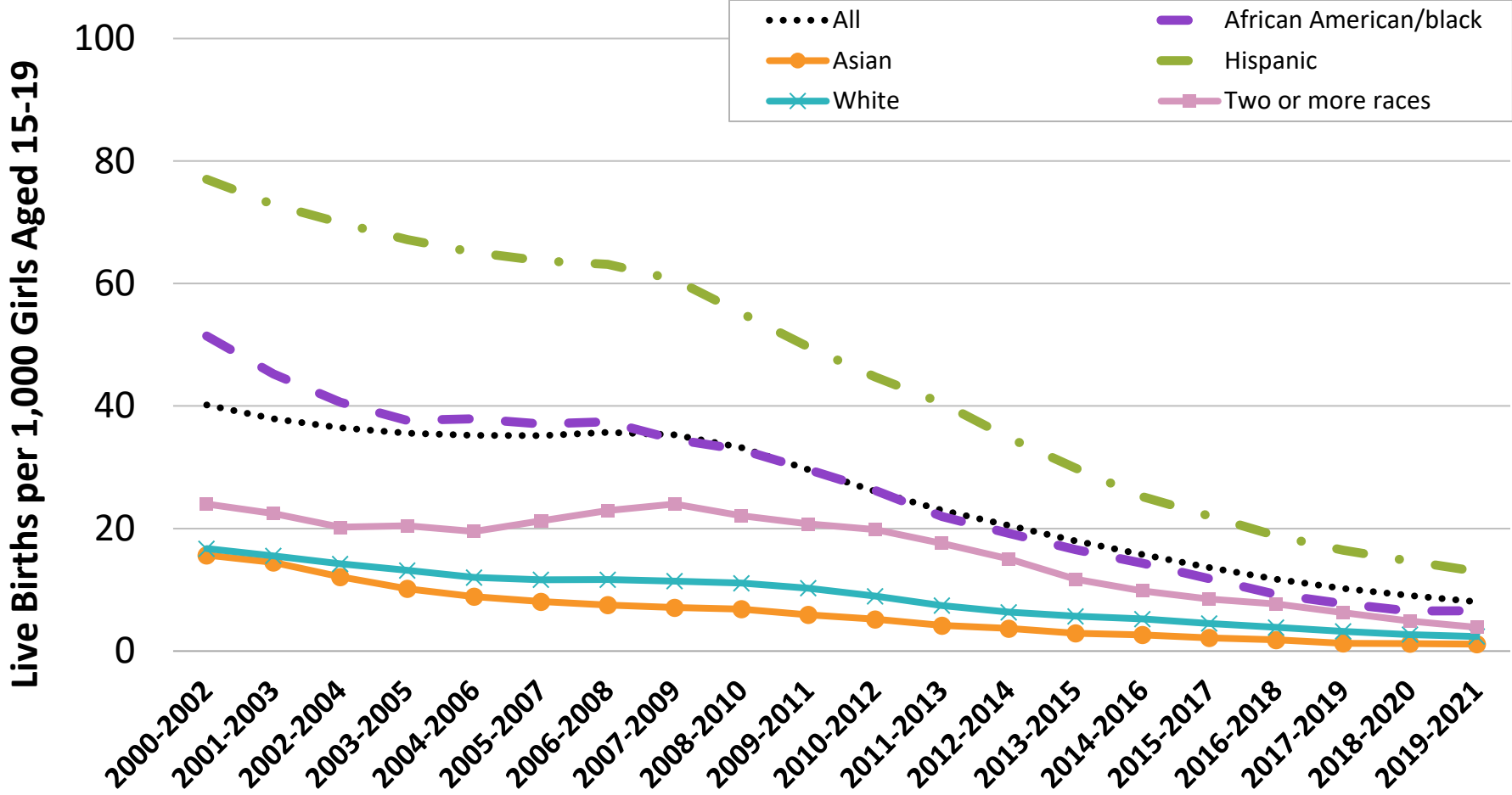
# Live Births by Mother's Race/Ethnicity San Diego County Residents, 2019-2021



- Source: California Department of Public Health, Center for Health Statistics and Informatics, California Comprehensive Birth Files.  
- Prepared by: County of San Diego, Health and Human Services Agency, Public Health Services, Maternal, Child and Family Health Services.

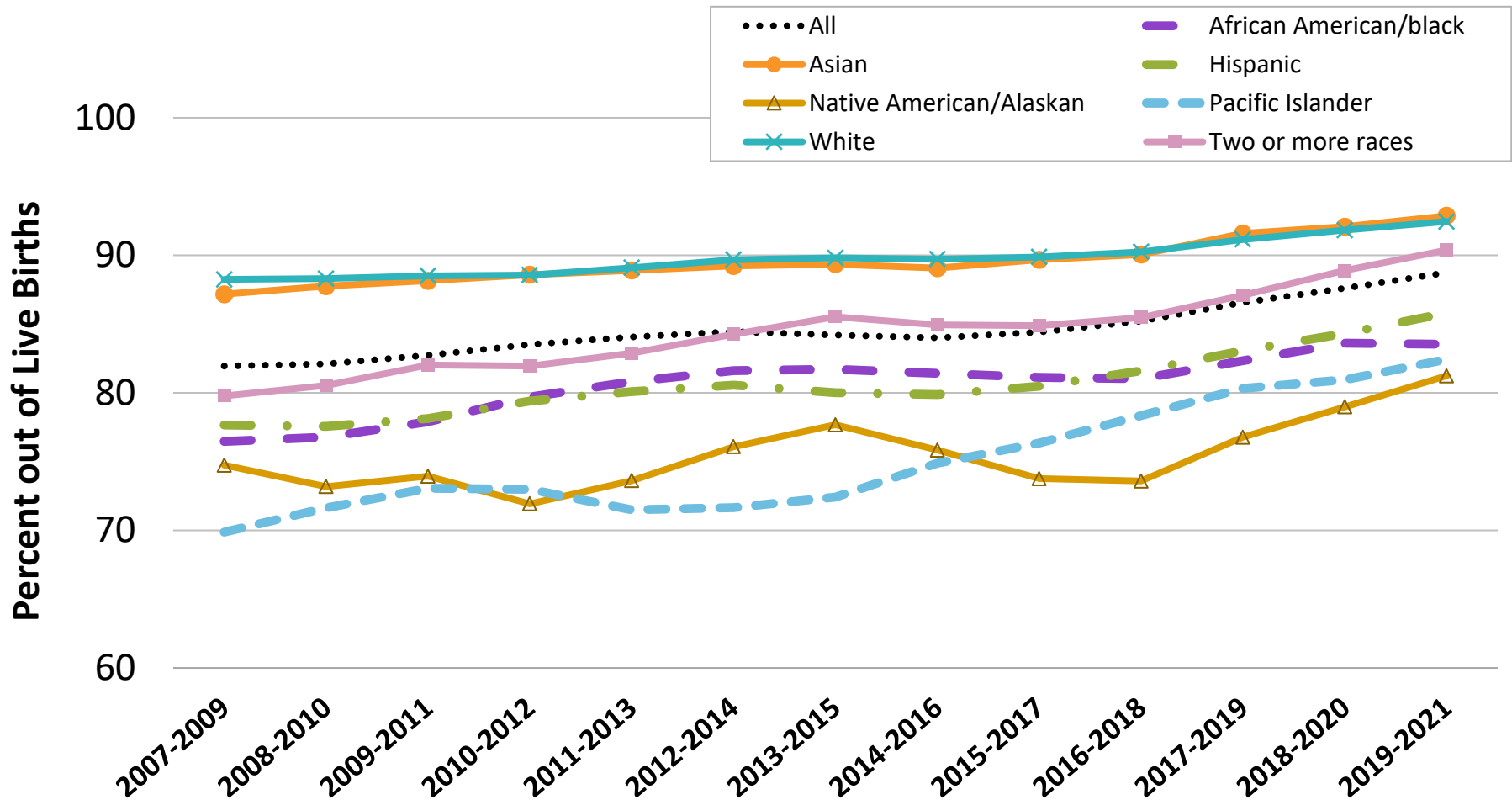
# Teen Birth Rates by Race/Ethnicity

## San Diego County Residents, 3-Year Rolling Averages



- Rates not shown for Unknown race/ethnicity and groups with fewer than 20 events in any period (Native American/Alaskan, Pacific Islander, Other).  
 - Source: California Department of Public Health, Center for Health Statistics and Informatics, Birth Statistical Master Files and California Comprehensive Birth Files. SANDAG, Current Estimates, Released 3/3/2015; Vintage 2021 Population and Housing Estimates, Released 9/2022.  
 - Prepared by: County of San Diego, Health and Human Services Agency, Public Health Services, Maternal, Child and Family Health Services.

# Percent Early Prenatal Care by Race/Ethnicity San Diego County Residents, 3-Year Rolling Averages



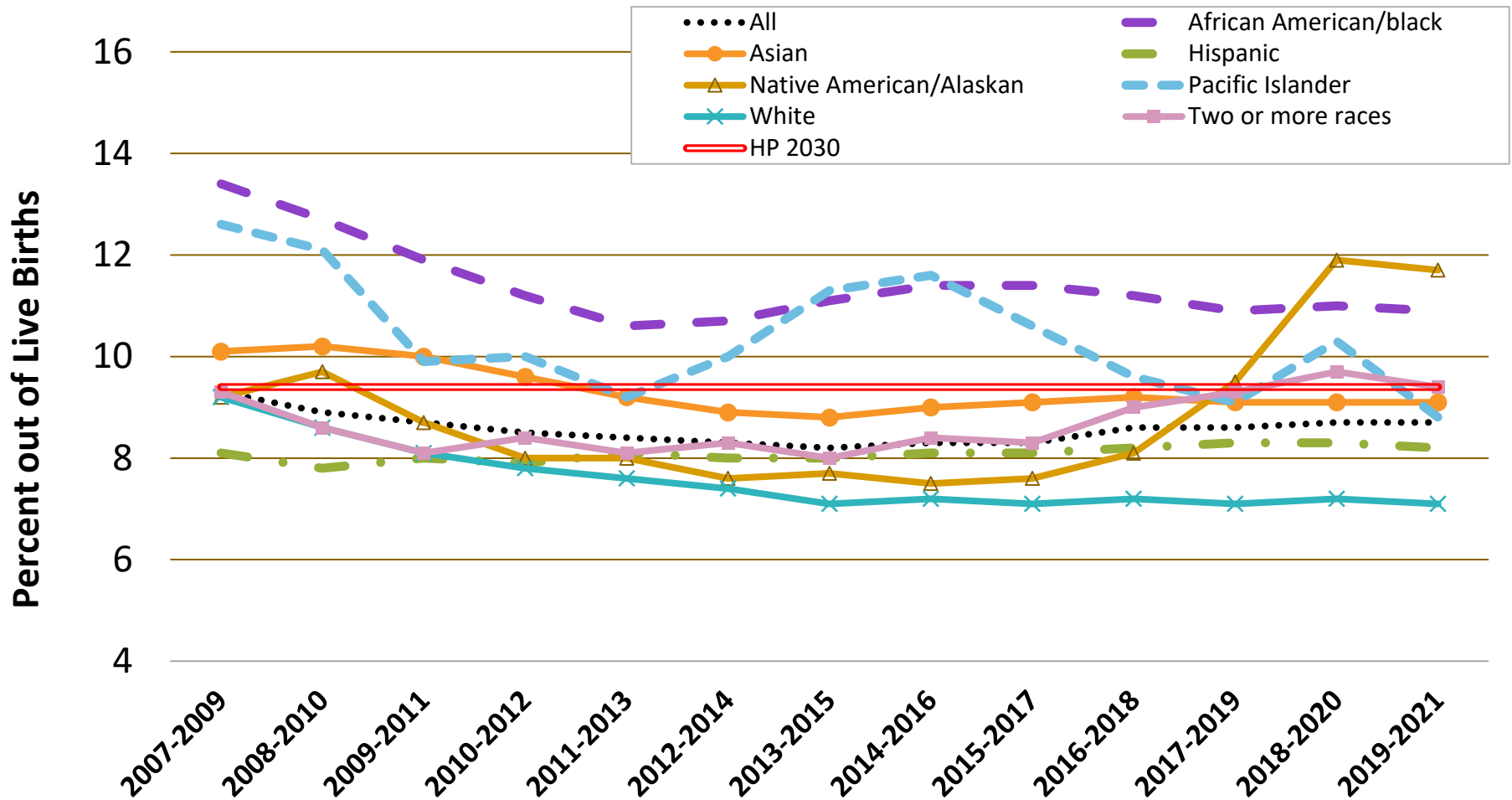
- Rates not shown for Unknown race/ethnicity and groups with fewer than 20 events in any period (Other).

- Source: California Department of Public Health, Center for Health Statistics and Informatics, Birth Statistical Master Files and California Comprehensive Birth Files.

- Prepared by: County of San Diego, Health and Human Services Agency, Public Health Services, Maternal, Child and Family Health Services.

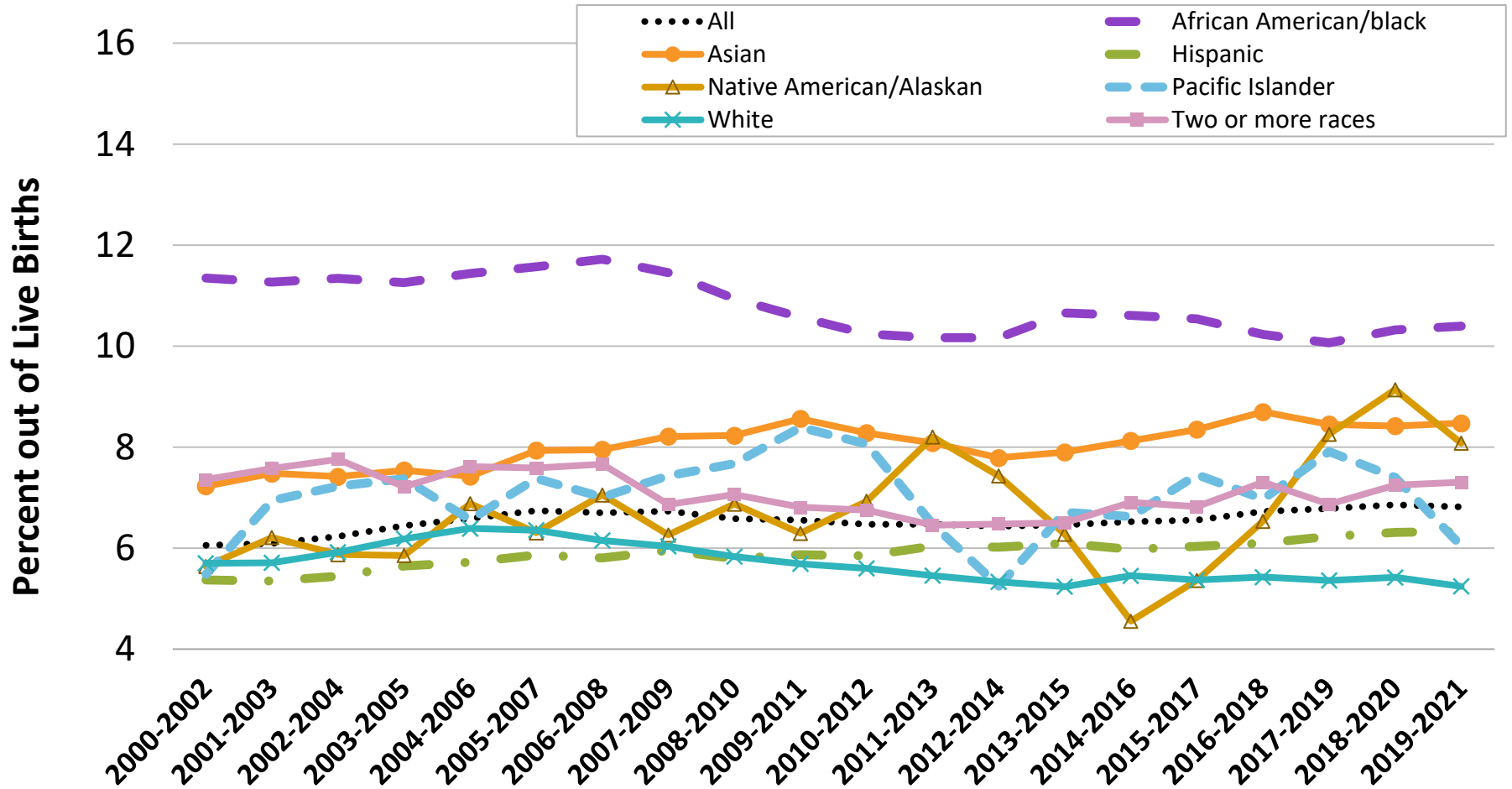
# Percent Preterm Births by Race/Ethnicity

## San Diego County Residents, 3-Year Rolling Averages



- Rates not shown for Unknown race/ethnicity and groups with fewer than 20 events in any period (Other).
- Source: California Department of Public Health, Center for Health Statistics and Informatics, Birth Statistical Master Files and California Comprehensive Birth Files.
- Prepared by: County of San Diego, Health and Human Services Agency, Public Health Services, Maternal, Child and Family Health Services.

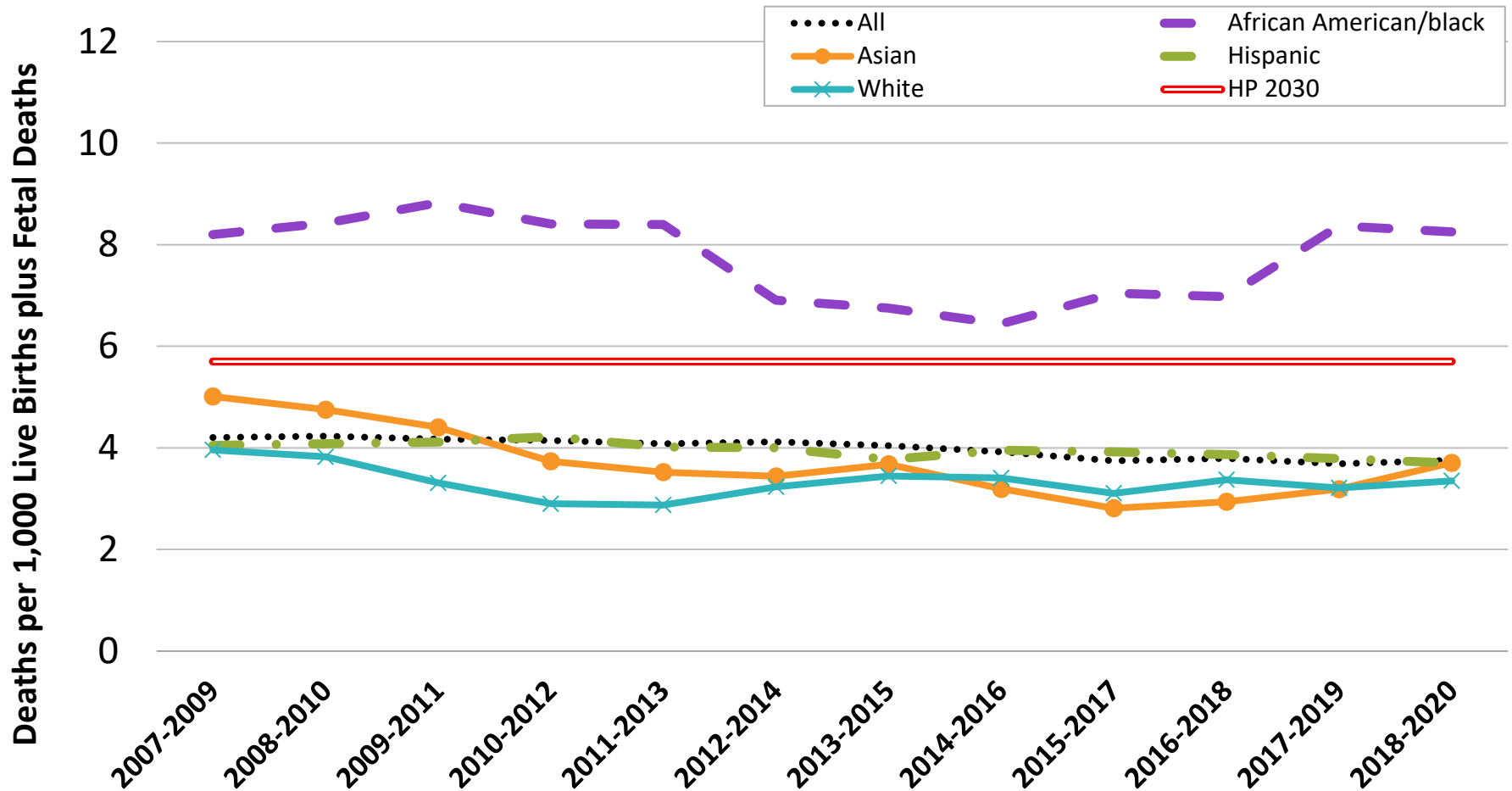
# Percent Low Birthweight Births by Race/Ethnicity San Diego County Residents, 3-Year Rolling Averages



- Rates not shown for Unknown race/ethnicity and groups with fewer than 20 events in any period (Other).  
 - Source: California Department of Public Health, Center for Health Statistics and Informatics, Birth Statistical Master Files and California Comprehensive Birth Files.  
 - Prepared by: County of San Diego, Health and Human Services Agency, Public Health Services, Maternal, Child and Family Health Services.

# Fetal Mortality Rates by Race/Ethnicity

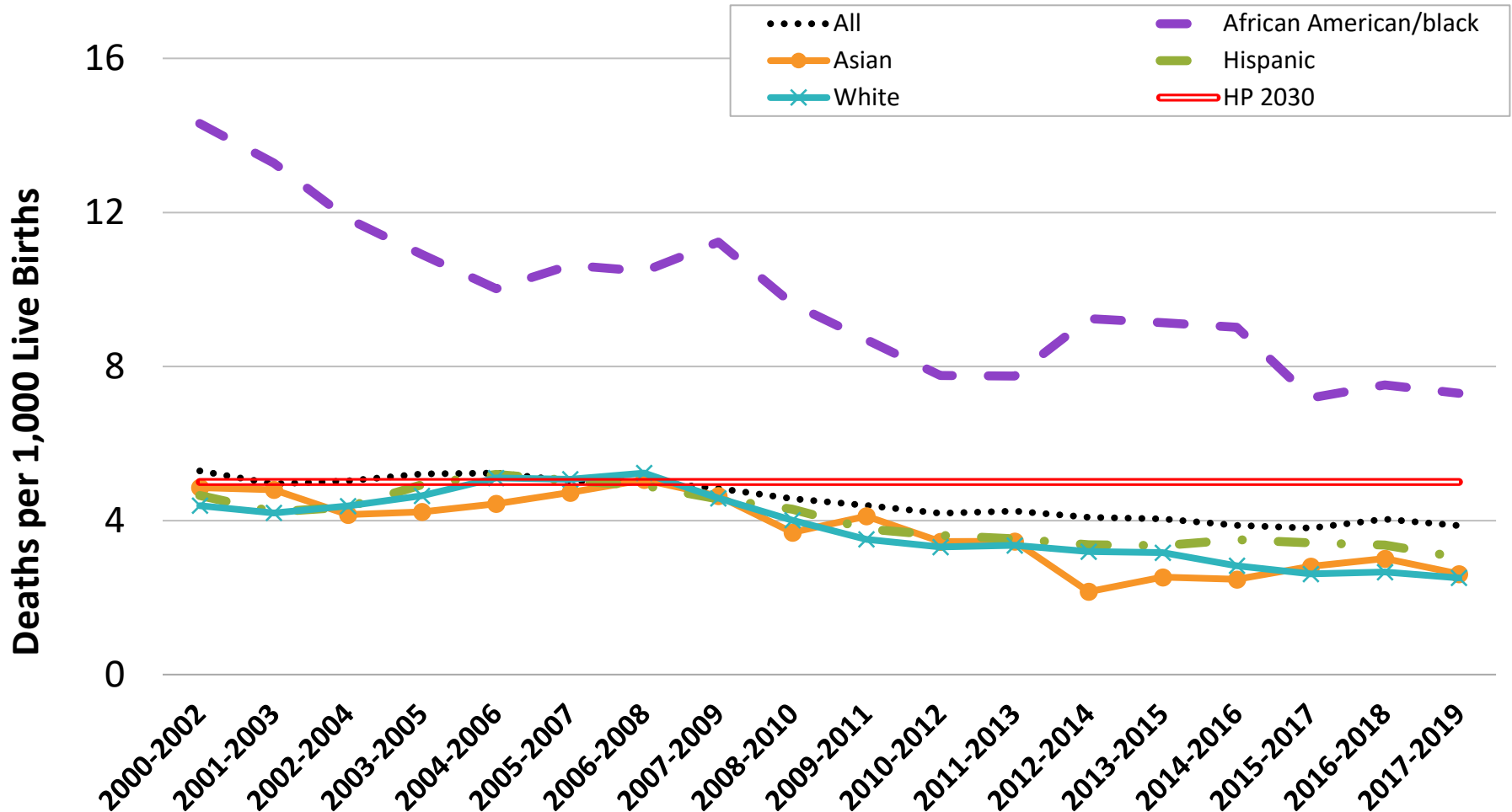
## San Diego County Residents, 3-Year Rolling Averages



- Rates not shown for Unknown race/ethnicity and groups with fewer than 20 events in any period (Native American/Alaskan, Pacific Islander, Other, and Two or more races).  
 - Source: California Department of Public Health, Center for Health Statistics and Informatics, Fetal Death Statistical Master Files.  
 - Prepared by: County of San Diego, Health and Human Services Agency, Public Health Services, Maternal, Child and Family Health Services.

# Infant Mortality Rates by Race/Ethnicity

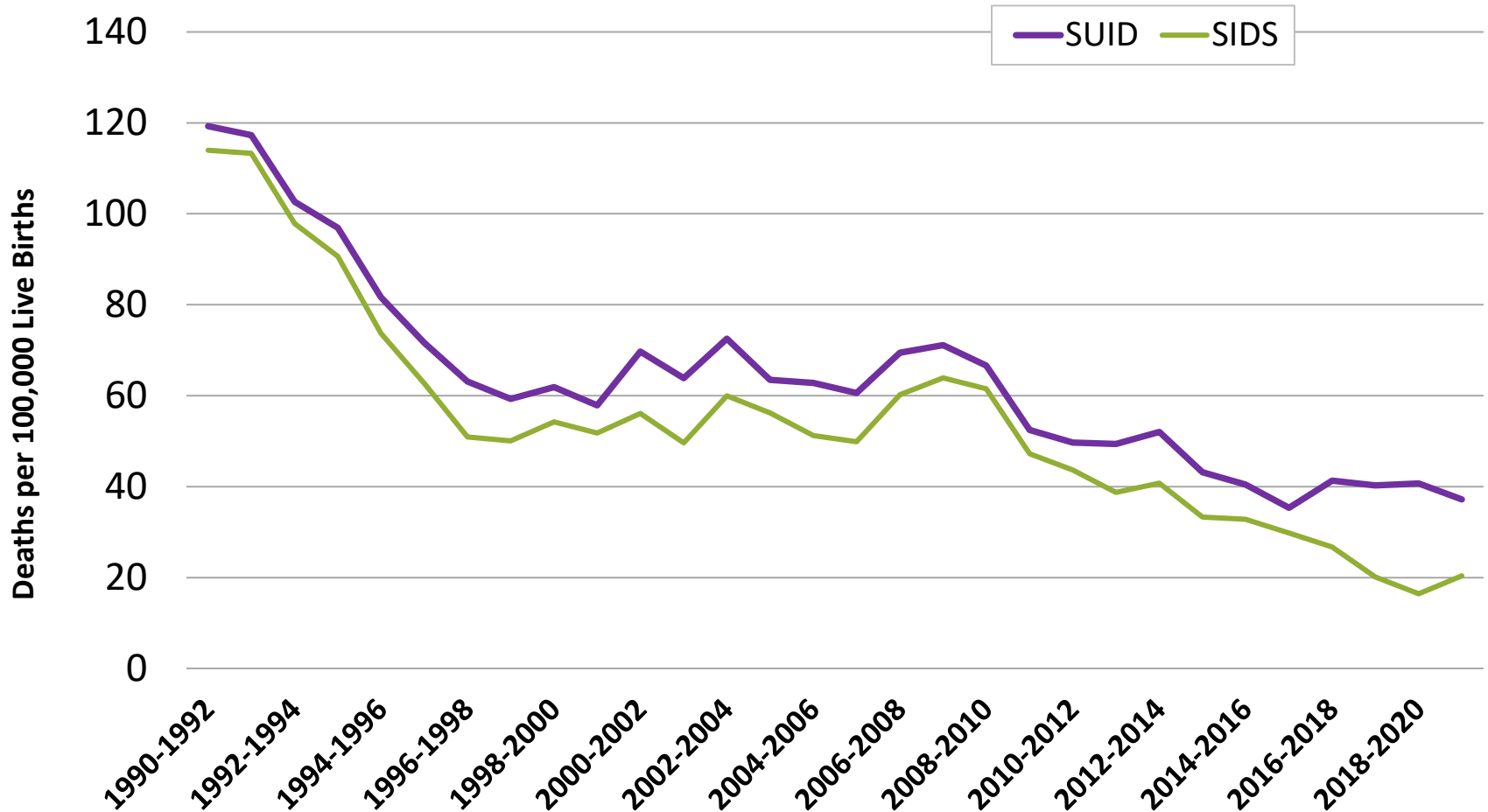
## San Diego County Residents, 3-Year Rolling Averages



- Rates not shown for Unknown race/ethnicity and groups with fewer than 20 events in any period (Native American/Alaskan, Pacific Islander, Other, and Two or more races).
- Source: California Department of Public Health, Center for Health Statistics and Informatics, Birth Cohort Statistical Master Files.
- Prepared by: County of San Diego, Health and Human Services Agency, Public Health Services, Maternal, Child and Family Health Services.

# Infant Deaths due to SUID and SIDS

## San Diego County Residents, 3-Year Rolling Averages



Sources: State of California, Department of Public Health, Center for Health Statistics and Informatics, Vital Statistics Query System, Death and Birth Statistical Master Files, and California Comprehensive Death and Birth Files.

Prepared by: County of San Diego, Health and Human Services Agency, Public Health Services, Maternal, Child and Family Health Services.