



To: CAHAN San Diego Participants
Date: February 1, 2020
From: Epidemiology and Immunizations Services Branch, Public Health Services

Health Advisory Update: 2019 Novel Coronavirus

The Centers for Disease Control and Prevention (CDC) issued the attached [health advisory](#) on the 2019 novel coronavirus and updated the [interim guidance](#) for healthcare professionals to evaluate potential cases.

San Diego County providers may care for patients who develop illness following travel from mainland China. The following recommendations are provided for local providers:

IDENTIFY possible cases. Providers should take a detailed travel history for patients with fever and acute respiratory illness to identify potential exposures. If a patient reports recent travel to mainland China, the provider should clarify which cities and provinces were visited.

ISOLATE possible cases. Immediately place symptomatic patients with a positive travel history in a surgical mask and private room, ideally an airborne infection isolation room. See the California Department of Public Health [all-facilities letter](#) issued on January 30, 2020.

INFORM facility infection control AND the County Epidemiology Program by calling 619-692-8499 during normal business hours (Monday-Friday 8 AM-5 PM), or 858-565-5255 after hours, on weekends, and County-observed holidays.

A flow diagram that summarizes the above Identify-Isolate-Inform “3 I” approach is attached, with more information available [here](#).

As this situation continues to evolve rapidly, providers should consistently monitor CDC recommendations at the [CDC Novel Coronavirus website](#).

General public inquiries about the developing coronavirus situation should be directed to [2-1-1 San Diego](#) or to the [County Novel Coronavirus website](#).

The Center for Systems Science and Engineering at Johns Hopkins University is maintaining a very helpful map/summary of locations [here](#). The website has case data based on information from CDC, the World Health Organization, the National Health Commission of the People's Republic of China, and Dingxiangyuan, a social networking site for health care professionals.

Thank you for your participation.

CAHAN San Diego

County of San Diego Health & Human Services Agency

Epidemiology and Immunization Services Branch

Phone: (619) 692-8499

Fax: (858) 715-6458

Urgent Phone for pm/weekends/holidays: (858) 565-5255

E-mail: cahan@sdcounty.ca.gov

Secure Website: <http://cahan.ca.gov>

Public-Access Website: <http://www.cahansandiego.com>

This is an official **CDC HEALTH UPDATE**

Distributed via the CDC Health Alert Network
February 1, 2020, 0900 ET (9:00 AM ET)
CDCHAN-00427

Update and Interim Guidance on Outbreak of 2019 Novel Coronavirus (2019-nCoV)

Summary

The Centers for Disease Control and Prevention (CDC) continues to closely monitor an outbreak of respiratory illness caused by a novel coronavirus (2019-nCoV) that was initially detected in Wuhan City, Hubei Province, China in December 2019.

This CDC Health Alert Network (HAN) Update provides a situational update and interim guidance to state and local health departments that supersedes guidance in CDC's HAN 426 distributed on January 17, 2020. It also adds

- guidance for clinicians caring for patients with 2019-nCoV (<https://www.cdc.gov/coronavirus/2019-ncov/hcp/clinical-guidance-management-patients.html>),
- and for public health officials on the evaluation and testing of patients under investigation (PUIs) for 2019-nCoV (<https://www.cdc.gov/coronavirus/2019-nCoV/hcp/clinical-criteria.html>), and
- updated infection prevention and control guidance specific to 2019-nCoV (<https://www.cdc.gov/coronavirus/2019-nCoV/hcp/infection-control.html>).

Early in the outbreak, many of the patients with respiratory illness caused by 2019-nCoV in China had exposure to a large seafood and live animal market, suggesting animal-to-human transmission. More recently, cases have been confirmed with no exposure to animal markets, indicating that person-to-person spread of the virus has occurred. Chinese officials report that sustained person-to-person spread in the community is occurring in China.

The first US case-patient was identified on January 21, 2020, and had recently traveled from Wuhan, China. Since that time, six additional cases have been confirmed in the United States, four among persons who traveled from Wuhan, and one a close contact of a confirmed case. Globally, reported illnesses in people with 2019-nCoV have ranged from mild (no or few signs and symptoms), to severe, including death. These findings are consistent with other coronaviruses, including Severe Acute Respiratory Syndrome (SARS) (<https://www.cdc.gov/sars/>) and Middle East Respiratory Syndrome (MERS) (<https://www.cdc.gov/coronavirus/mers/index.html>). Additional information about 2019-nCoV is needed to better understand transmission, disease severity, and risk to the general population. The goal of the ongoing US public health response is to identify and contain this outbreak and prevent sustained spread of 2019-nCoV in the United States.

Recommendations for Screening of Patients for 2019-nCoV in Healthcare Facilities

Recommendations for screening of patients for possible 2019-nCoV infection are based on (1) current knowledge of the characteristics of clinical illness observed in early cases, and (2) the geographic distribution of current cases. They reflect the current public health goal of rapidly containing and preventing transmission of 2019-nCoV illness.

Patients presenting to healthcare facilities should be assessed for exposures associated with risk of 2019-nCoV infections (e.g., travel to China or close contact with a confirmed case) and for symptoms consistent with 2019-nCoV infection (<https://www.cdc.gov/coronavirus/2019-nCoV/hcp/clinical->

[criteria.html](#)). The assessment is intended to allow healthcare providers to make decisions about appropriate infection control and management of patients. Note that the signs and symptoms of 2019-nCoV overlap with those associated with other viral respiratory tract infections. Given the time of year, common respiratory illnesses, including influenza, should also be considered in patients who are screened. (Figure 1)

Clinicians should ask:

- Does the person have fever or symptoms of lower respiratory infection, such as cough or shortness of breath?

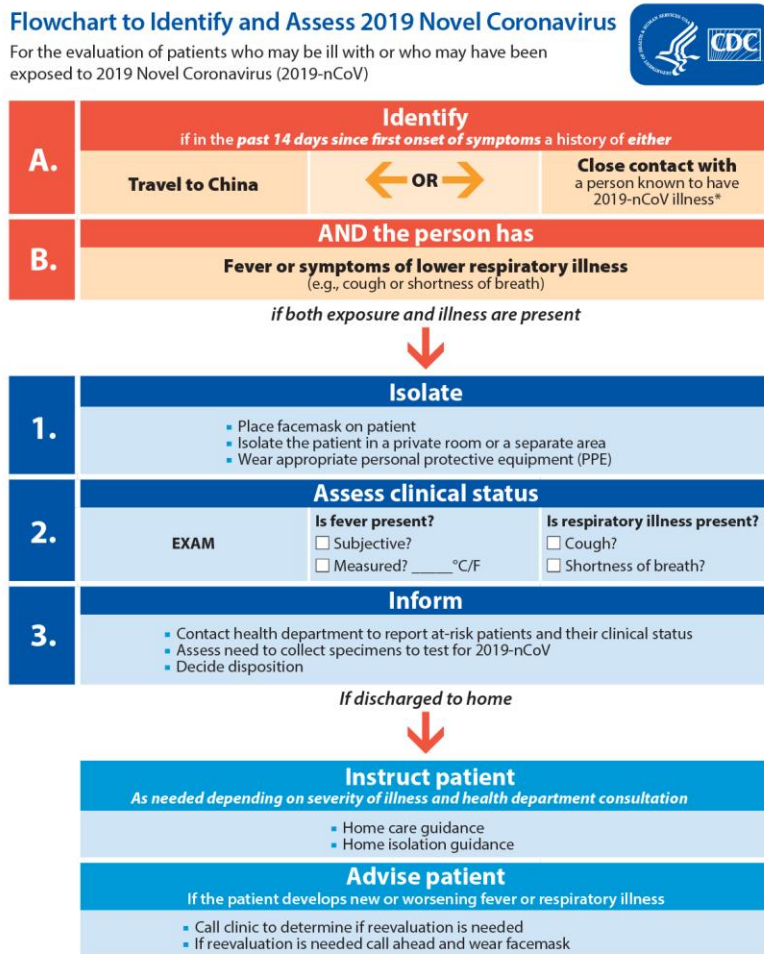
AND

- Has the patient travelled to mainland China within 14 days of symptom onset?

OR

- Has the patient had close contact¹ with a person confirmed with 2019-nCoV infection?

Figure 1.



* Documentation of laboratory-confirmation of 2019-nCoV may not be possible for travelers or persons caring for patients in other countries. For more clarification on the definition for close contact see CDC's Interim Guidance for Healthcare Professionals: www.cdc.gov/coronavirus/2019-nCoV/hcp/clinical-criteria.html

If a patient meets these criteria:

- To minimize the risk that other people will be exposed to individuals who may have 2019-nCoV, patients who report having these symptoms should be asked to wear a surgical mask as soon as they are identified and directed to a separate area, if possible, with at least 6 feet (2 meters) separation from other persons. Patients should be evaluated in a private room with the door closed, ideally an airborne infection isolation room (AIIR), if available. Healthcare personnel entering the room should use standard precautions, contact precautions, airborne precautions, and use eye protection (e.g., goggles or a face shield). For more information about this, see CDC's *Interim Infection Prevention and Control Recommendations for Patients with Known or Patients Under Investigation for 2019 Novel Coronavirus (2019-nCoV) in a Healthcare Setting* (<https://www.cdc.gov/coronavirus/2019-nCoV/hcp/infection-control.html>).

Clinicians should immediately notify the healthcare facility's infection control personnel and local health department. The health department will determine if this patient needs to be considered a PUI for 2019-nCoV and be tested for infection.

Criteria to Guide Evaluation and Testing of Patients Under Investigation (PUI) for 2019-nCoV

Local health departments, in consultation with clinicians, should determine whether a patient is a PUI for 2019-nCoV. The CDC clinical criteria for 2019-nCoV PUIs have been developed based on available information about this novel virus, as well as what is known about SARS and MERS. These criteria are subject to change as additional information becomes available.

| Clinical Features | AND | Epidemiologic Risk |
|---|------------|--|
| Fever ² or signs/symptoms of lower respiratory illness (e.g. cough or shortness of breath) | AND | Any person, including health care workers, who has had close contact ¹ with a laboratory-confirmed ³ 2019-nCoV patient within 14 days of symptom onset |
| Fever ² and signs/symptoms of a lower respiratory illness (e.g., cough or shortness of breath) | AND | A history of travel from Hubei Province , China within 14 days of symptom onset |
| Fever ² and signs/symptoms of a lower respiratory illness (e.g., cough or shortness of breath) requiring hospitalization ⁴ | AND | A history of travel from mainland China within 14 days of symptom onset |

These criteria are intended to serve as guidance for evaluation and testing. Patients should be evaluated and discussed with public health departments on a case-by-case basis for possible 2019-nCoV infection. Testing decisions might be further informed by the clinical presentation or exposure history (e.g., uncertain travel or exposure), and the presence of an alternative diagnosis that explains their clinical presentation.

Recommendations for Reporting, Testing, and Specimen Collection

Healthcare providers should **immediately** notify infection control personnel at their healthcare facility if a patient is classified a PUI for 2019-nCoV. State health departments that have identified a PUI should immediately contact CDC's Emergency Operations Center (EOC) at 770-488-7100 and complete a 2019-nCoV PUI case investigation form (<https://www.cdc.gov/coronavirus/mers/interim-guidance.html#evaluation>). CDC's EOC will assist local and state health departments with obtaining, storing, and shipping appropriate specimens to CDC, including afterhours or on weekends or holidays. Currently, diagnostic testing for 2019-nCoV can be done only at CDC. Testing for other respiratory pathogens should not delay specimen shipping to CDC.

For initial diagnostic testing for 2019-nCoV, CDC recommends collecting and testing upper respiratory (nasopharyngeal AND oropharyngeal swabs), and lower respiratory (sputum, if possible) for those patients with productive coughs. Induction of sputum is not indicated. Specimens should be collected as soon as possible once a PUI is identified, regardless of the time of symptom onset. See *Interim Guidelines for Collecting, Handling, and Testing Clinical Specimens from Patients Under Investigation (PUIs) for 2019 Novel Coronavirus (2019-nCoV)* (<https://www.cdc.gov/coronavirus/2019-nCoV/lab/guidelines-clinical-specimens.html>).

Recommendations for Healthcare Providers

No vaccine or specific treatment for 2019-nCoV infection is available. At present, medical care for patients with 2019-nCoV is supportive.

Persons with confirmed or suspected 2019-nCoV infection who are hospitalized should be evaluated and cared for in a private room with the door closed, ideally an airborne infection isolation room, if available. For more information, see *Interim Infection Prevention and Control Recommendations for Patients with Known or Patients Under Investigation for 2019 Novel Coronavirus (2019-nCoV) in a Healthcare Setting* (<https://www.cdc.gov/coronavirus/2019-nCoV/hcp/infection-control.html>).

Home care and isolation may be an option, based on clinical and public health assessment, for some persons. Please see *Interim Guidance for Preventing the Spread of 2019 Novel Coronavirus (2019-nCoV) in Homes and Communities* (<https://www.cdc.gov/coronavirus/2019-ncov/hcp/guidance-prevent-spread.html>).

Those isolated at home should be monitored by public health officials to the extent possible. Refer to *Interim Guidance for Implementing Home Care of People Not Requiring Hospitalization for 2019 Novel Coronavirus (2019-nCoV)* (<https://www.cdc.gov/coronavirus/2019-ncov/hcp/guidance-home-care.html>) for more information.

Notes

¹Close contact is defined as:

a) being within approximately 6 feet (2 meters), or within the room or care area, of a 2019-nCoV case for a prolonged period of time while not wearing recommended personal protective equipment or PPE (e.g., gowns, gloves, NIOSH-certified disposable N95 respirator, eye protection); close contact can include caring for, living with, visiting, or sharing a health care waiting area or room with a 2019-nCoV case

- or -

b) having direct contact with infectious secretions of a 2019-nCoV case (e.g., being coughed on) while not wearing recommended personal protective equipment.

²Fever may be subjective or confirmed

See CDC's updated *Interim Infection Prevention and Control Recommendations for Patients with Known or Patients Under Investigation for 2019 Novel Coronavirus (2019-nCoV) in a Healthcare Setting* (<https://www.cdc.gov/coronavirus/2019-ncov/infection-control.html>).

Data to inform the definition of close contact are limited. Considerations when assessing close contact include the duration of exposure (e.g., longer exposure time likely increases exposure risk) and the clinical symptoms of the person with 2019-nCoV (e.g., coughing likely increases exposure risk as does exposure to a severely ill patient). Special consideration should be given to those exposed in health care settings.

³ Documentation of laboratory-confirmation of 2019-nCoV may not be possible for travelers or persons caring for patients in other countries.

⁴ Category also includes any member of a cluster of patients with severe acute lower respiratory illness (e.g., pneumonia, ARDS) of unknown etiology in which 2019-nCoV is being considered that requires hospitalization. Such persons should be evaluated in consultation with state and local health departments regardless of travel history.

For More Information

More information is available at the 2019 Novel Coronavirus website (<https://www.cdc.gov/coronavirus/2019-ncov/index.html>) or by calling 800-CDC-INFO | (800-232-4636) | TTY: (888) 232-6348

The Centers for Disease Control and Prevention (CDC) protects people's health and safety by preventing and controlling diseases and injuries; enhances health decisions by providing credible information on critical health issues; and promotes healthy living through strong partnerships with local, national, and international organizations.

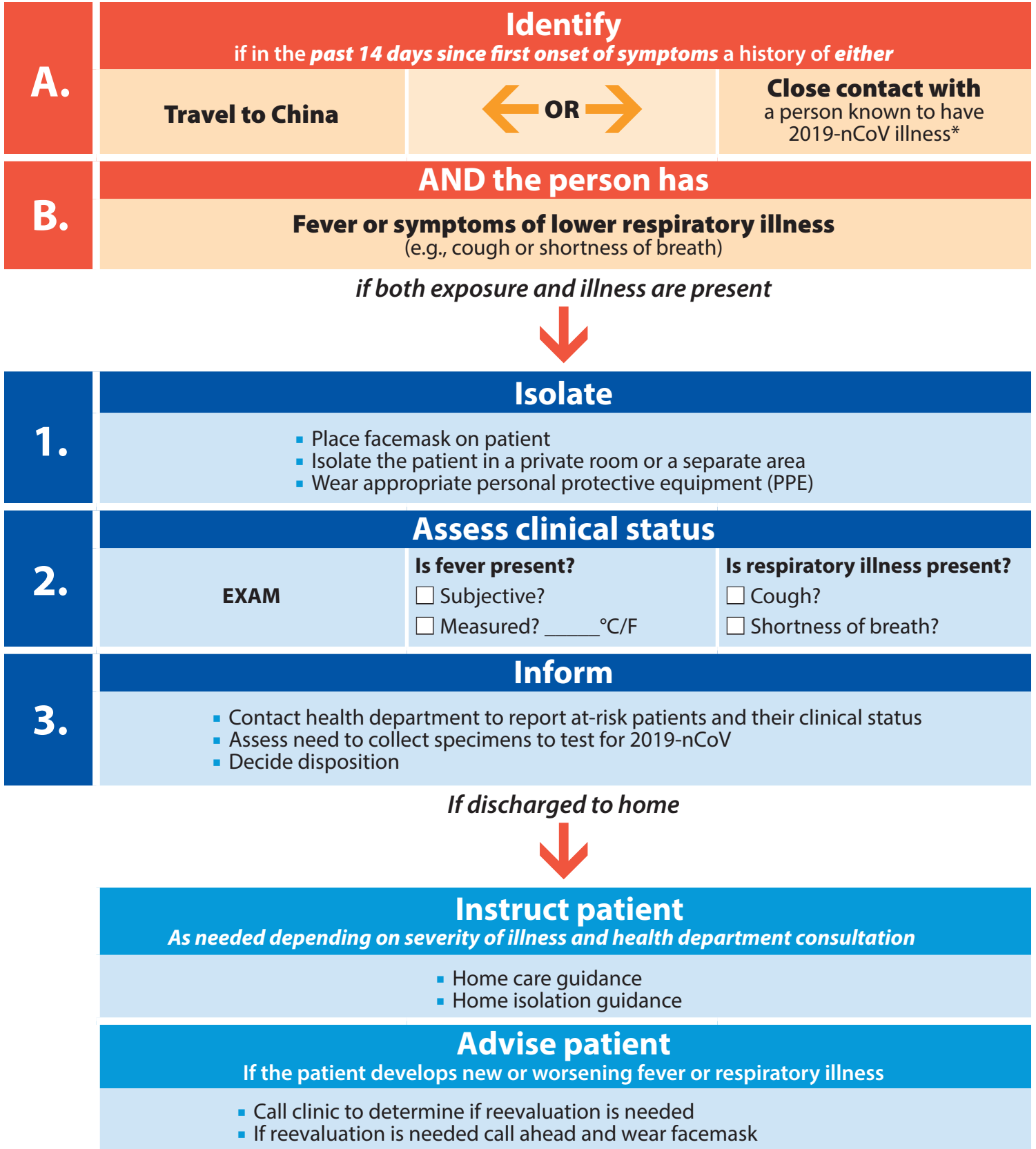
Categories of Health Alert Network messages:

Health Alert Requires immediate action or attention; highest level of importance
Health Advisory May not require immediate action; provides important information for a specific incident or situation
Health Update Unlikely to require immediate action; provides updated information regarding an incident or situation
HAN Info Service Does not require immediate action; provides general public health information

##This message was distributed to state and local health officers, state and local epidemiologists, state and local laboratory directors, public information officers, epidemiologists, HAN coordinators, and clinician organizations##

Flowchart to Identify and Assess 2019 Novel Coronavirus

For the evaluation of patients who may be ill with or who may have been exposed to 2019 Novel Coronavirus (2019-nCoV)



* Documentation of laboratory-confirmation of 2019-nCoV may not be possible for travelers or persons caring for patients in other countries. For more clarification on the definition for close contact see CDC's Interim Guidance for Healthcare Professionals: www.cdc.gov/coronavirus/2019-nCoV/hcp/clinical-criteria.html