

## Influenza Surveillance Update for Week #20 (May 11-17, 2008)

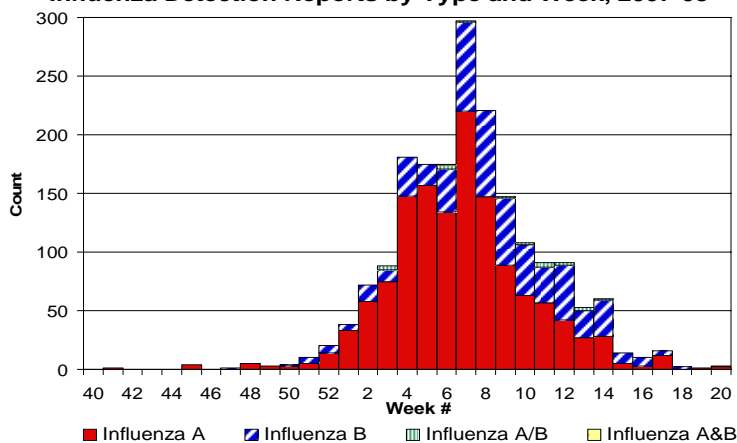
### Recent Influenza Activity

During week 20, 3 new influenza detections were reported to Public Health (2 influenza A, 1 influenza B). A total of 1,896 influenza-positive laboratory results have been reported since July 1, 2007. Nine influenza-related deaths have been reported to date. No severe pediatric influenza cases have been reported to date. Influenza continues to circulate in San Diego County at low levels. Influenza activity in California is considered to be "sporadic" (i.e. small numbers of laboratory-confirmed influenza cases or a single laboratory-confirmed outbreak, and no increases in influenza-like-illness).

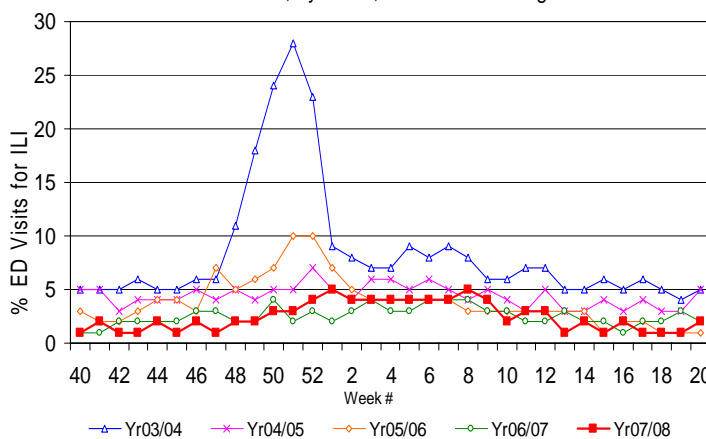
Surveillance Indicator	2007-08 Season			2006-07 Season		Previous 3-Season Average	
	Week 20	Week 19	Total To-Date	Week 20	Total To-Date	Week 20	Total To-Date
Number of influenza-positive laboratory reports	3	1	1,896	3	696	1	683
Percent of emergency department visits for ILI*	2%	1%		2%		3%	
Percent of students absent - Elementary School	3%	3%		4%		4%	
Percent of students absent - Middle/High School	6%	6%		7%		6%	
Percent of deaths with pneumonia and/or influenza	9%	7%		9%		8%	

\*ILI is defined as fever  $\geq 100^\circ$  F AND cough and/or sore throat

**Influenza Detection Reports by Type and Week, 2007-08**



**Percent ED Visits for ILI, by Week, FY 2003-04 through FY 2007-08**



### Viral Isolation and Characterization

Public Health Laboratory (PHL) has culture-confirmed a total of 53 influenza A isolates submitted for further testing since July 1, 2007. Twenty-seven were characterized as influenza A/H1, and 26 were influenza A/H3. Of the 3 influenza A isolates strain-typed by the State Viral and Rickettsial Disease Laboratory (VRDL), 3 were antigenically characterized as A/Solomon Islands/03/06 (H1)-like (the current vaccine strain), and 1 was A/Brisbane/10/2007 (H3N2)-like (a non-vaccine strain). Of the 4 influenza B isolates antigenically characterized, 3 were B/Shanghai/361/2002-like (Yamagata lineage), and 1 was B/Florida/04/06-like (Yamagata lineage). The current vaccine strain is of the B/Victoria lineage.

### Influenza Detection Reporting

Local healthcare providers are encouraged to perform rapid influenza tests on patients presenting with influenza-like-illness (ILI), and to report positive influenza detections to Public Health. Please fax a confidential morbidity report (CMR) or patient laboratory results to PHL at (619) 692-8558. If possible, please indicate the vaccination status, complications, and/or known recent travel history of the patient. Thank you for reporting influenza cases to public health.

### Severe Pediatric Influenza Case Reporting

California Department of Public Health Service has requested enhanced surveillance for severe pediatric influenza. A severe pediatric influenza case is defined as: age 0-17 years, AND a clinical syndrome consistent with influenza or complications of influenza, AND confirmation by laboratory testing for influenza, AND NICU/ICU hospitalization and/or death. Please report severe pediatric influenza to Community Epidemiology Branch by fax (619) 515-6644 or telephone (619) 515-6620. Forms may also be accessed from the County website [www.sdepi.org](http://www.sdepi.org) by selecting 'Disease Information for Health Care Providers'.

### Additional Influenza Resources

San Diego County Immunization Branch: [www.sdiz.org](http://www.sdiz.org)

Find a flu vaccine clinic location in your area: [http://www.sdchip.org/work\\_teams/wt\\_immunize/immunize.html](http://www.sdchip.org/work_teams/wt_immunize/immunize.html)

California Department of Public Health's weekly influenza update: <http://www.dhs.ca.gov/dcdc/VRDL/html/FLU/Fluintro.htm>

CDC's 2007-08 influenza season information <http://www.cdc.gov/flu/about/qa/season.htm>

*Influenza surveillance is a collaborative effort between San Diego County Public Health Services' Community Epidemiology, Public Health Laboratory, Immunization Branch, and our medical community partners.*

**Community Epidemiology (619) 515-6620 email [Epidiv.hhsa@sdcounty.ca.gov](mailto:Epidiv.hhsa@sdcounty.ca.gov)  
County of San Diego / Health & Human Services Agency / Public Health Services**