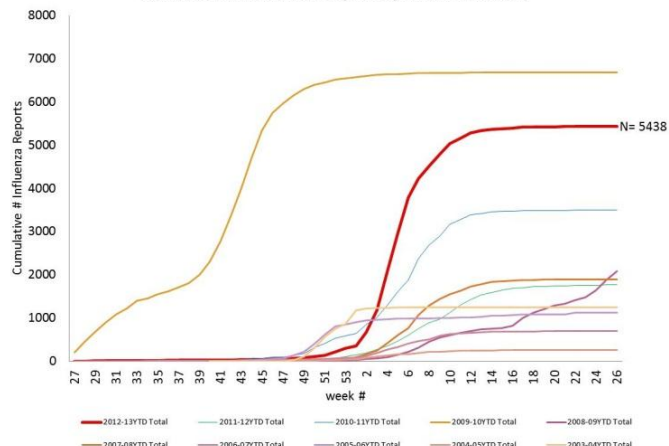


The 2012-13 influenza season in San Diego County was moderately severe.

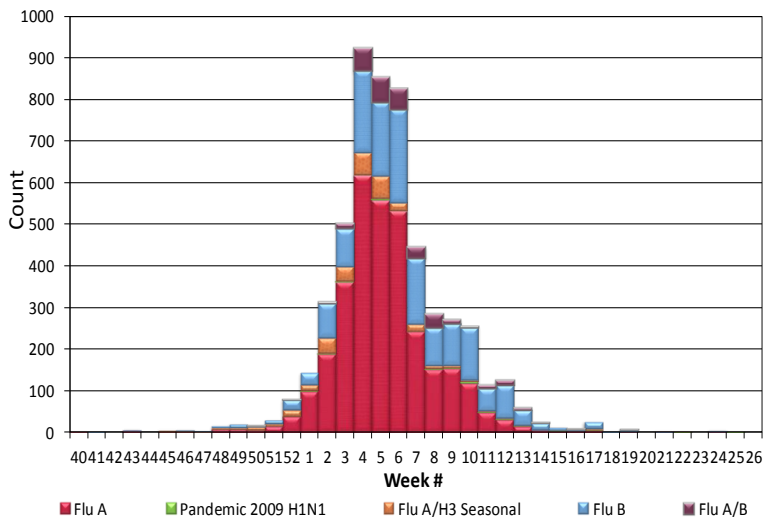
### Season Highlights

- 5,438 total influenza detections reported
- Predominantly influenza A season (65.9%)
- 28.8% of reported detections were influenza B
- 65 influenza-related deaths reported

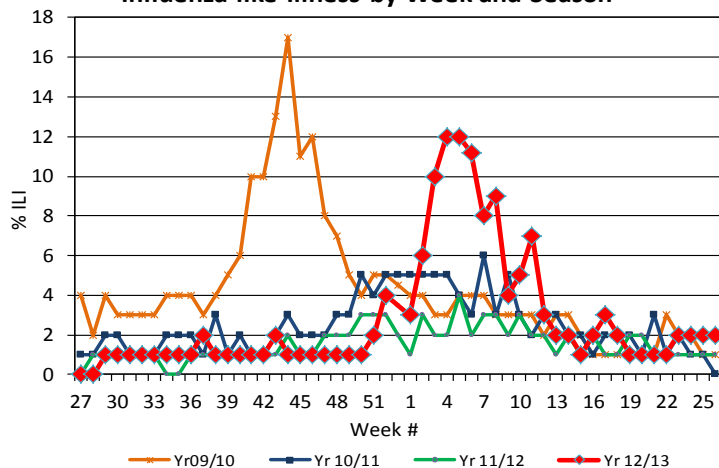
Cumulative Influenza Case Reports by Week and Season



San Diego County Influenza Detections by Type and Week of Report, 2012-13 (N=5,438)



Percent of Emergency Department Visits for Influenza-like-Illness by Week and Season



Influenza Detections Reported, FY 2012-13

Positive Test Type/Subtype	Total To-Date
Influenza A†	3,251
Influenza A (H1) Seasonal	0
Influenza A (H3) Seasonal	307
Pandemic 2009 H1N1	25
Influenza B	1,564
Influenza A/B†	291
<b>Total</b>	<b>5,438</b>

\* FY is July 1- June 30, or Week 27 - 26.

† No further characterization performed

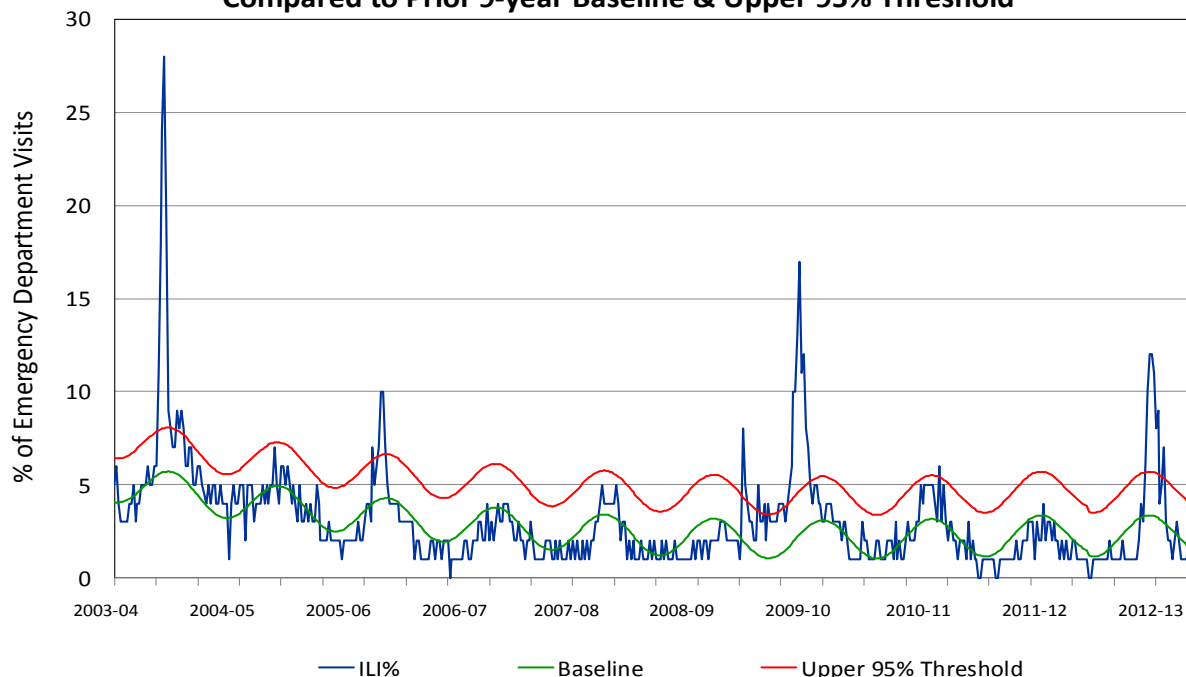
Surveillance Indicator	FY 2012-13	FY 2011-12	Prior 3-Year Average*
Influenza detections reported (all types)*	5,438	1,771	3,986
Number of influenza-related deaths reported	65	14	24

FY=Fiscal year is July 1-June 30, or Week 27 - Week 26.

\* Includes FYs 2009-10, 2010-11, and 2011-12.

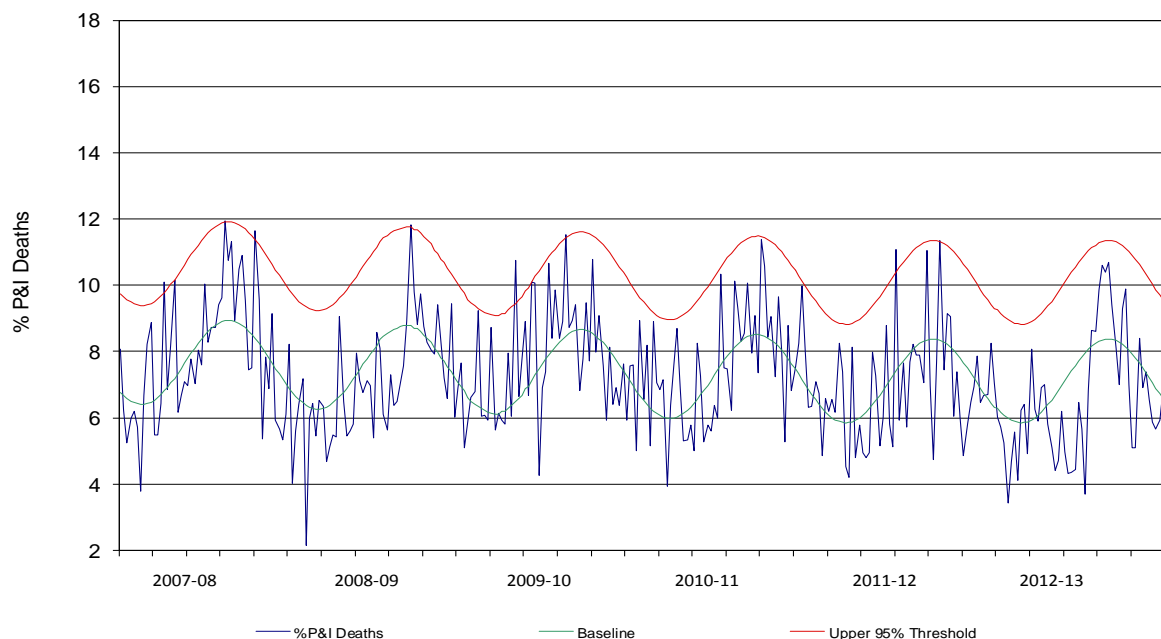
*Influenza surveillance is a collaborative effort between the County of San Diego Epidemiology and Immunization Services Branch and the medical community. Thank you!*

**Percent of Emergency Department Visits for Influenza-like-Illness by Week for San Diego County, FY 2003-04 through 2012-13 , Compared to Prior 9-year Baseline & Upper 95% Threshold**



Note: Influenza-like-illness is defined as fever  $\geq 100^{\circ}\text{F}$ , and cough and/or sore throat.

**Percent of Deaths with Pneumonia and/or Influenza by Week for San Diego County, FY 2007-08 through 2012-13 Compared to Prior 5-Year Baseline & Upper 95% Threshold**



Note: Includes any death certificates registered with pneumonia and/or influenza listed anywhere on the death certificate.