



SAN DIEGO COUNTY INFLUENZA SURVEILLANCE

2014-15 SEASON SUMMARY



2014-15 SUMMARY



7,395

TOTAL REPORTED
INFLUENZA CASES



155

ICU CASES



97

DEATHS



78

CONFIRMED
OUTBREAKS



2014-15 SUMMARY

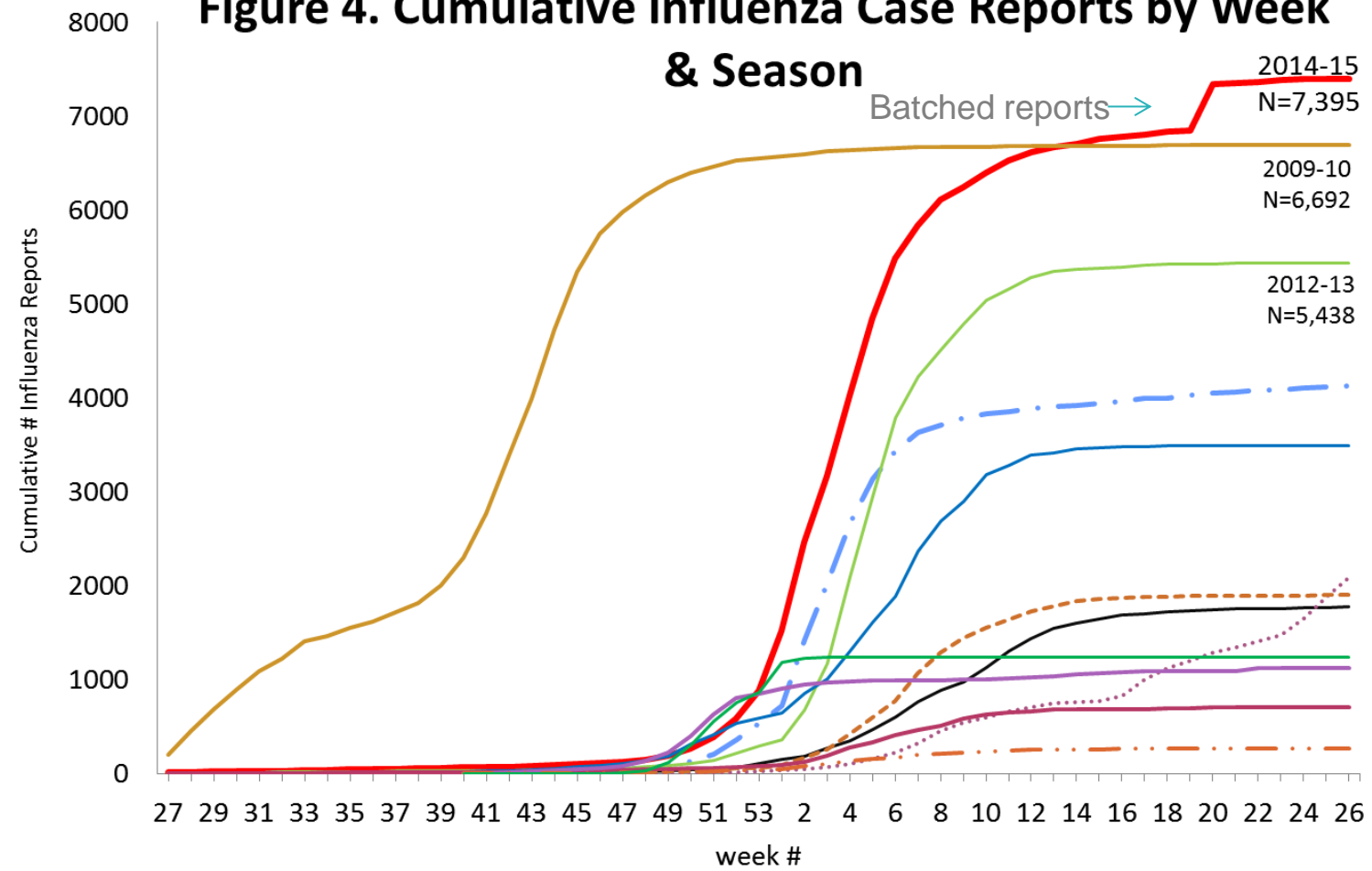


Flu Type	Flu Sub-type/Strain	Count	Percentage
Flu A	Influenza A	4,830	81.9%
	Influenza A (H3) Seasonal	1,217	
	Influenza A (H1N1)pdm09	9	
Flu B	Influenza B	1,122	16.7%
	Influenza B/Yamagata	68	
	Influenza B/Victoria	49	
Flu A/B	Influenza A/B	100	1.4%

2014-15 SUMMARY



Figure 4. Cumulative Influenza Case Reports by Week & Season

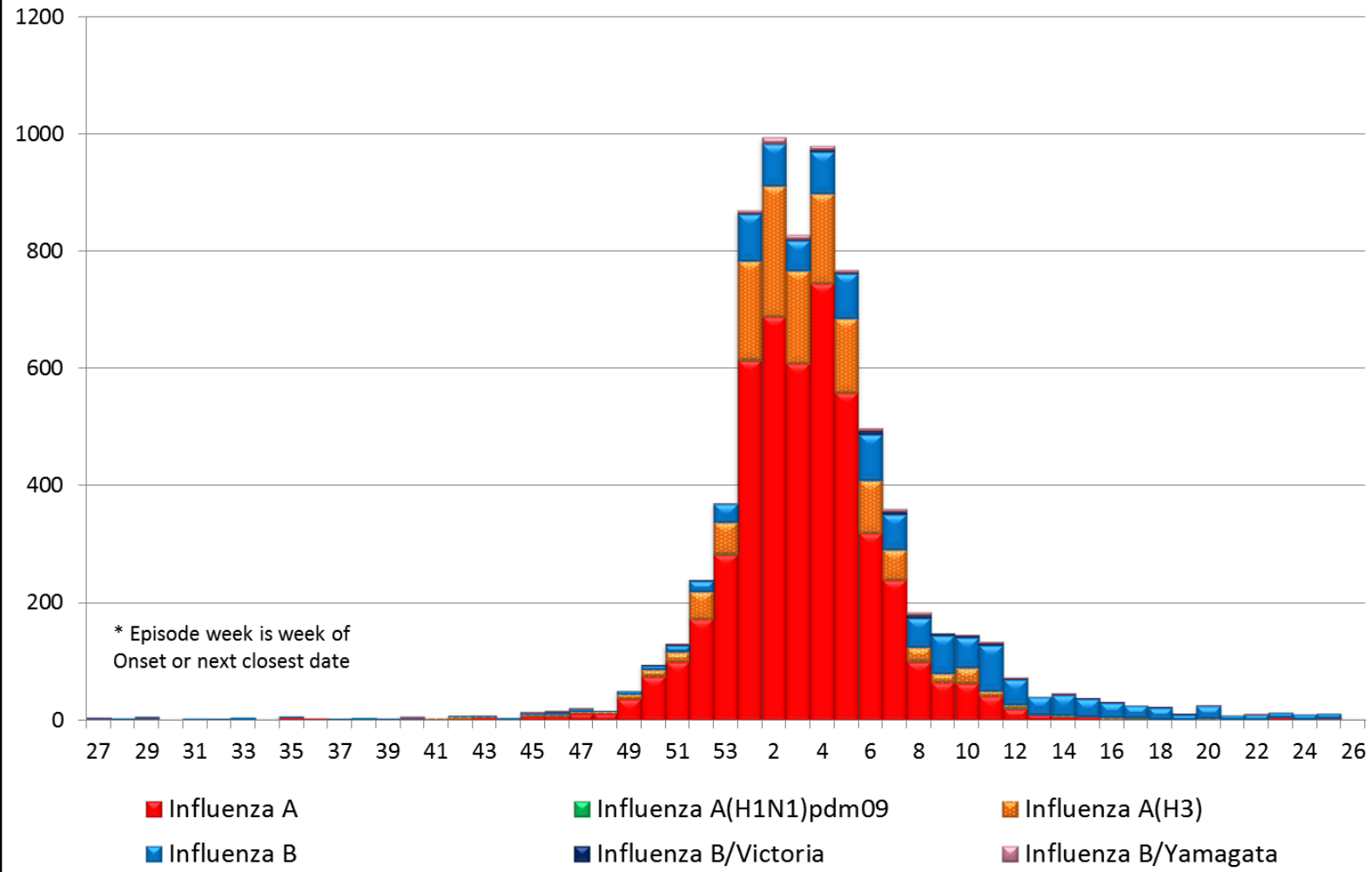


- 2014-15
- 2013-14
- 2012-13
- 2011-12
- 2010-11
- 2009-10
- 2008-09
- 2007-08
- 2006-07
- 2005-06
- 2004-05
- 2003-04

2014-15 SUMMARY



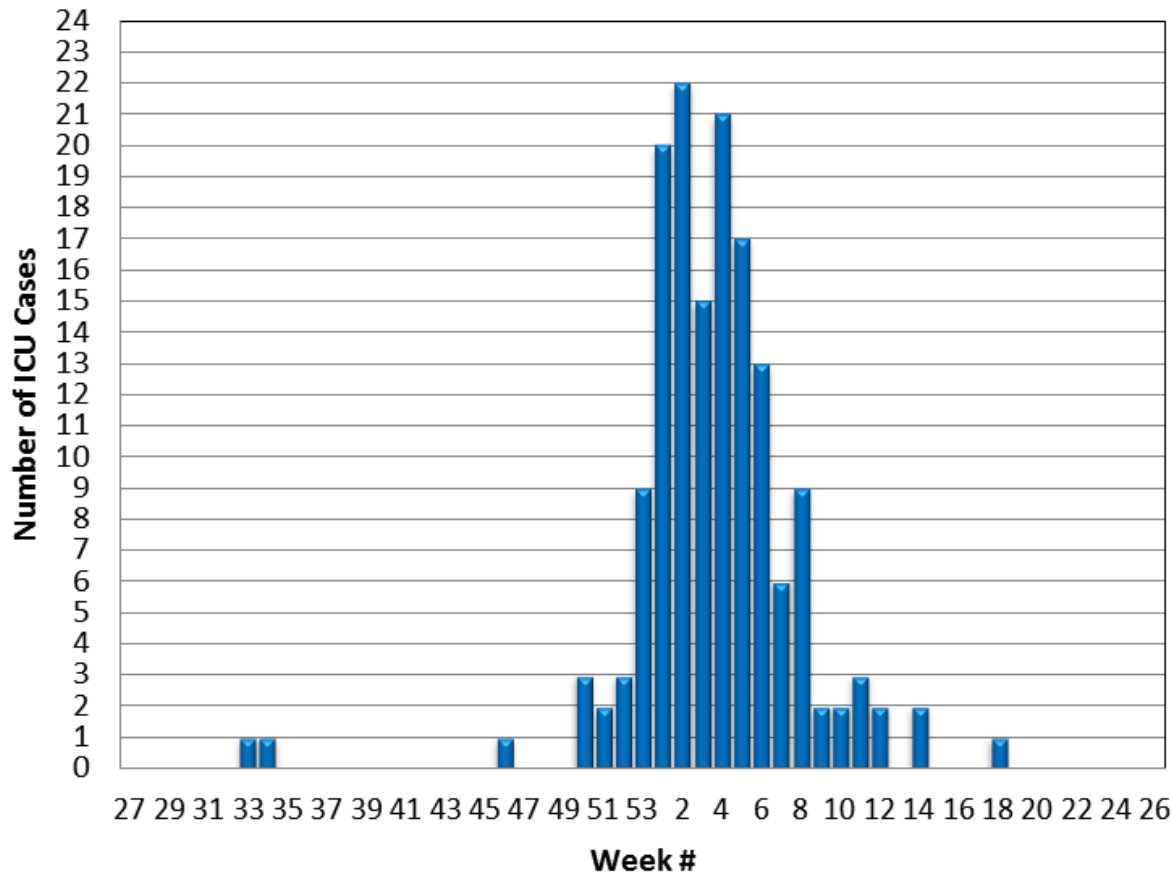
Figure 2. San Diego County Influenza Detections by Type and Episode Week*, 2014-15 (N=7,395)



2014-15 SUMMARY



Figure 9. Number of Influenza Cases Requiring ICU Care by Week Reported, 2014-15 YTD (N=155)

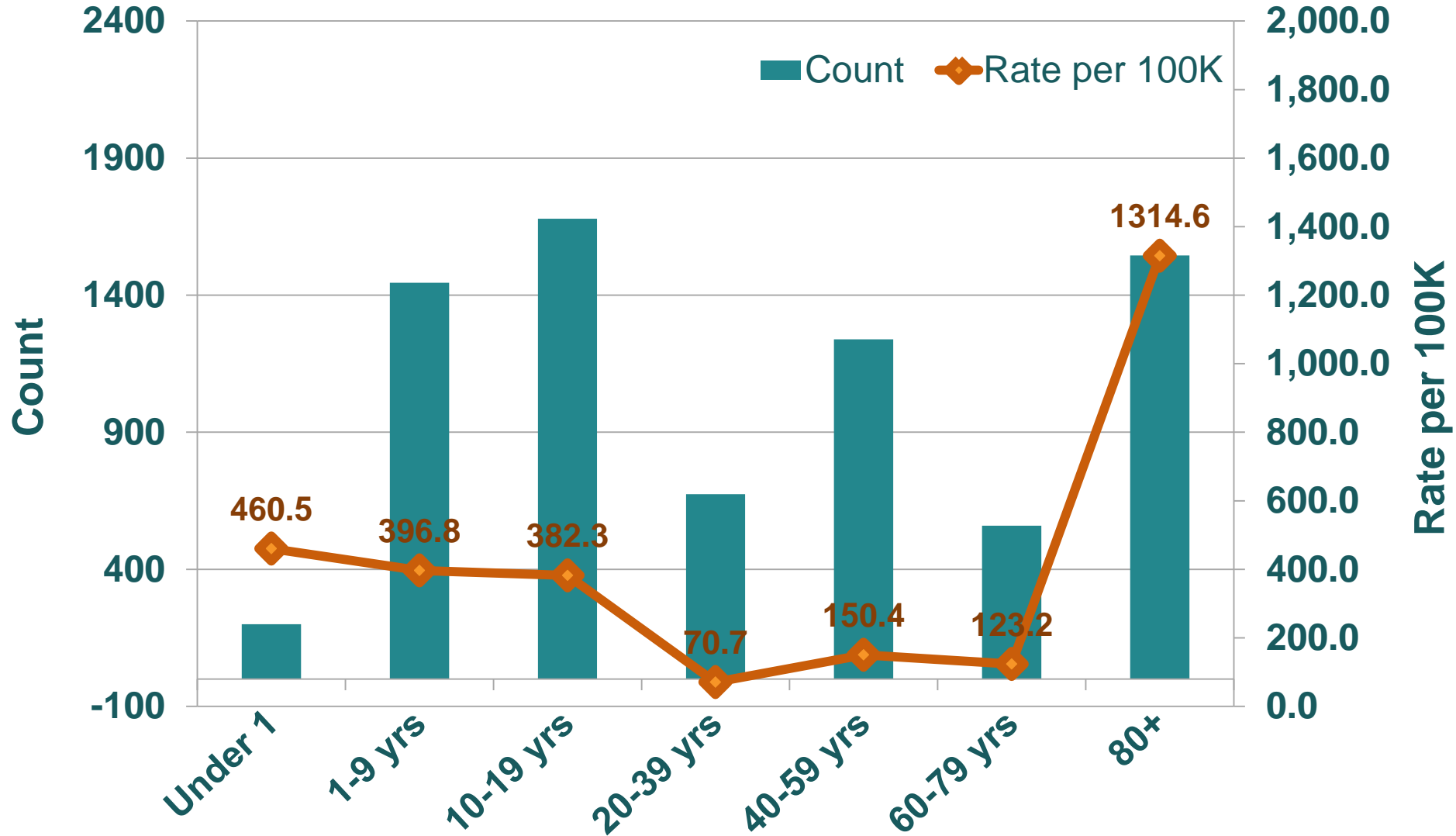


Data Source: Reported Influenza Case Reports

Prepared by County of San Diego, Health & Human Services Agency, Public Health Services, Epidemiology and Immunization Services Branch, 10/05/15

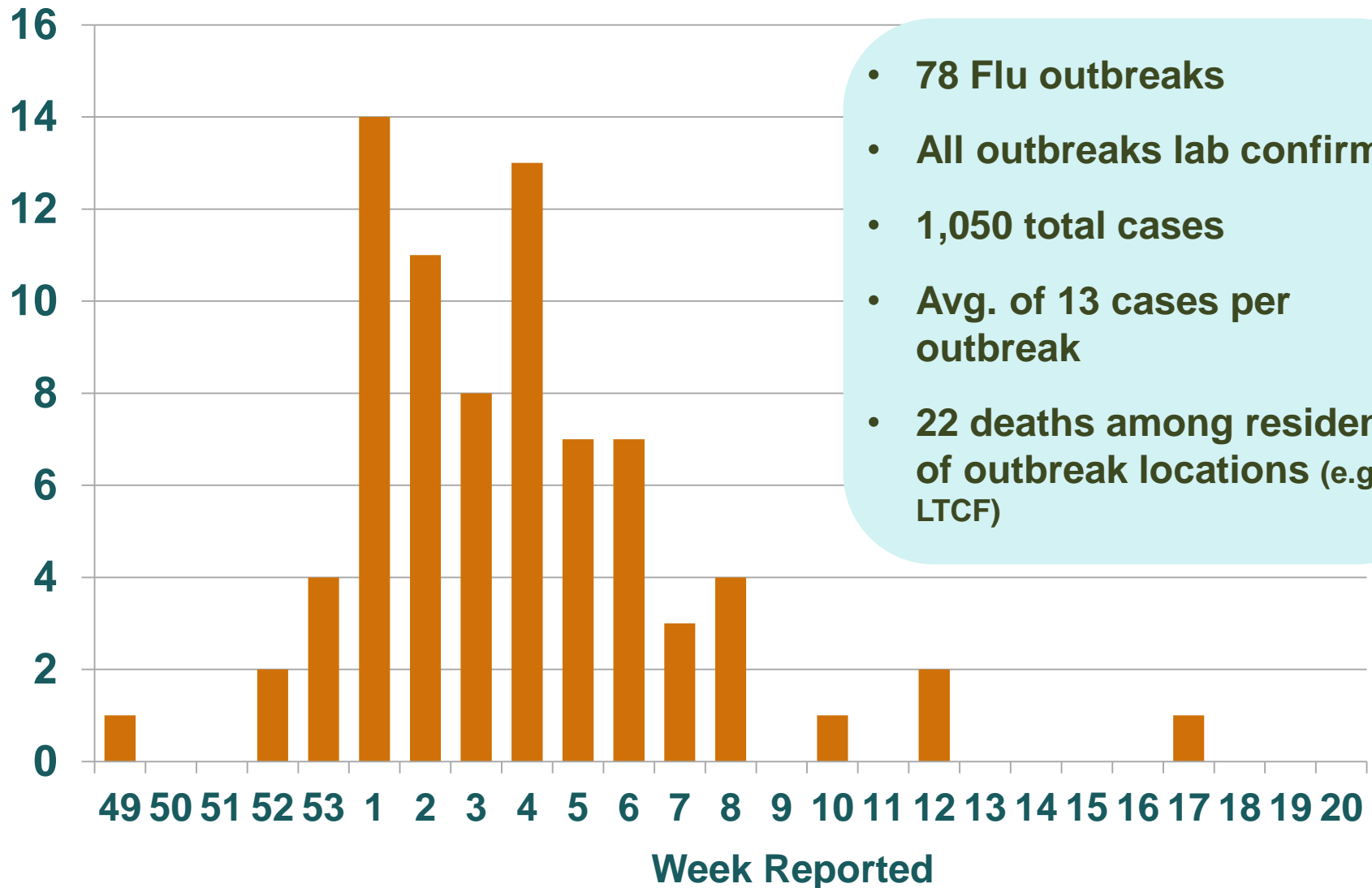
Influenza Cases by Age Group, 2014-15

Number and Age Specific Incident Rate



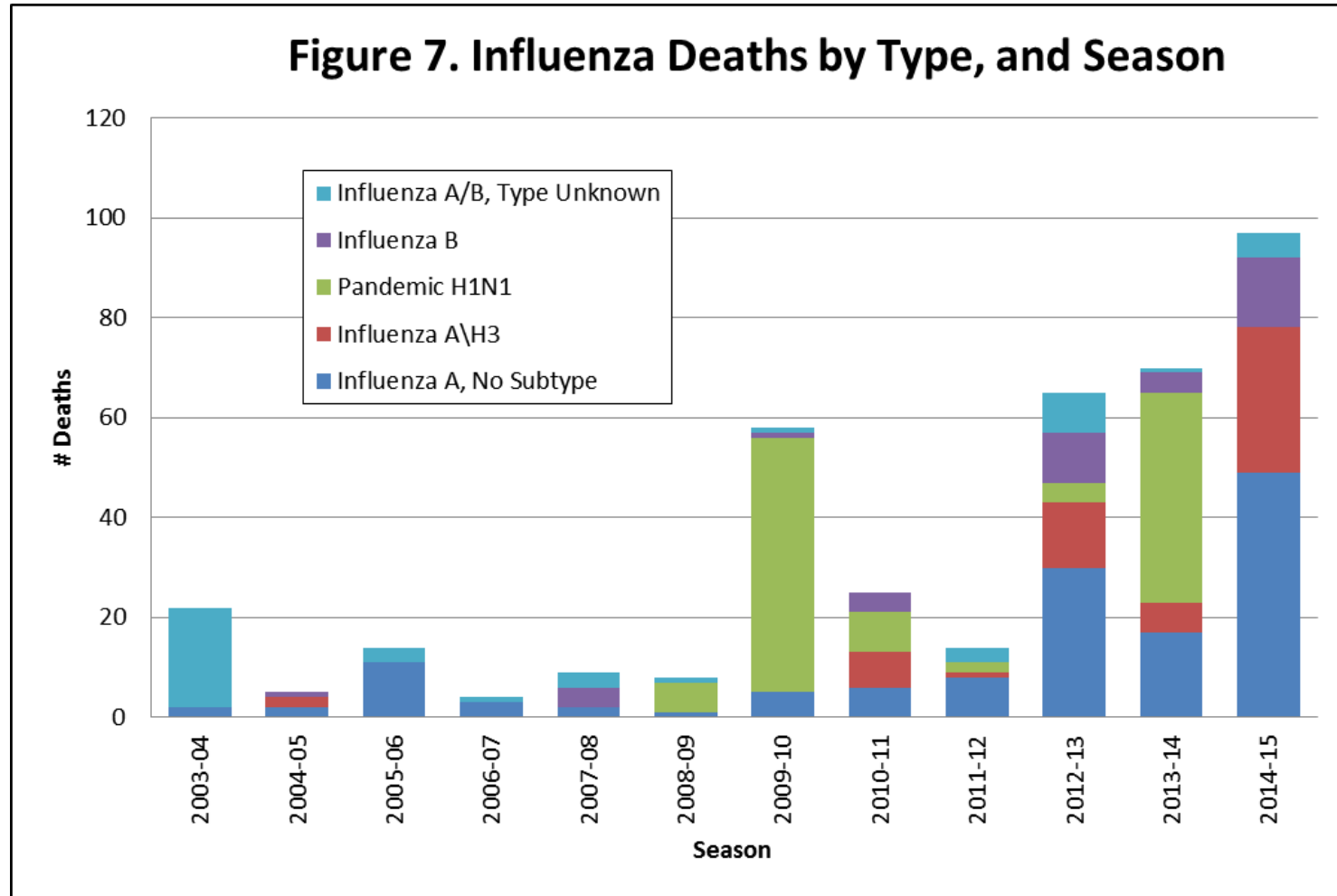
Influenza Outbreaks 2014-15

N=78



- 78 Flu outbreaks
- All outbreaks lab confirmed
- 1,050 total cases
- Avg. of 13 cases per outbreak
- 22 deaths among residents of outbreak locations (e.g. LTCF)

2014-15 SUMMARY



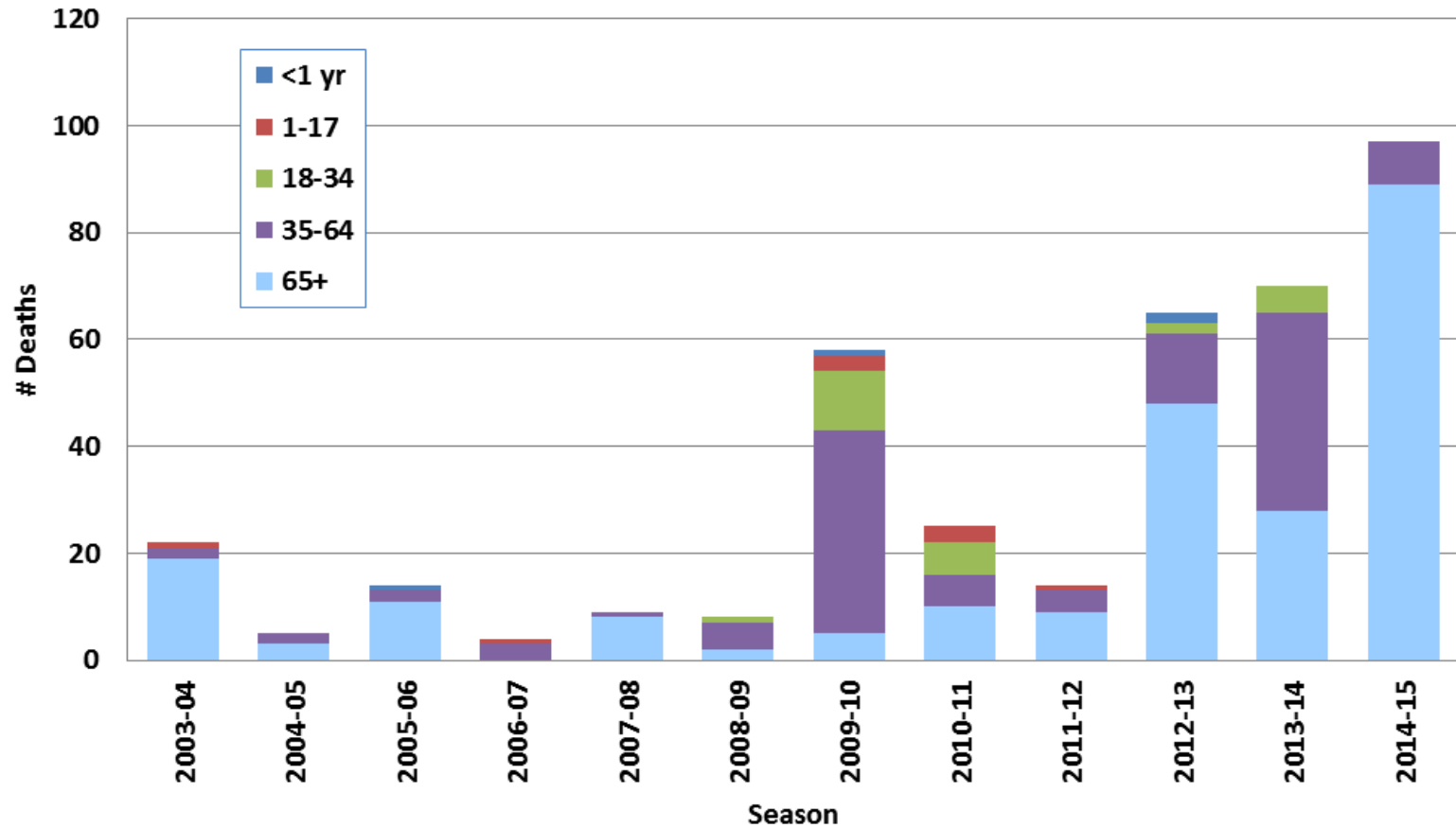
Data Source: Reported Influenza Case Reports

Prepared by County of San Diego, Health & Human Services Agency, Public Health Services, Epidemiology and Immunization Services Branch, 10/05/15

2014-15 SUMMARY



Figure 8. Influenza Deaths by Age and Season



Data Source: Reported Influenza Case Reports

Prepared by County of San Diego, Health & Human Services Agency, Public Health Services, Epidemiology and Immunization Services Branch, 10/05/15