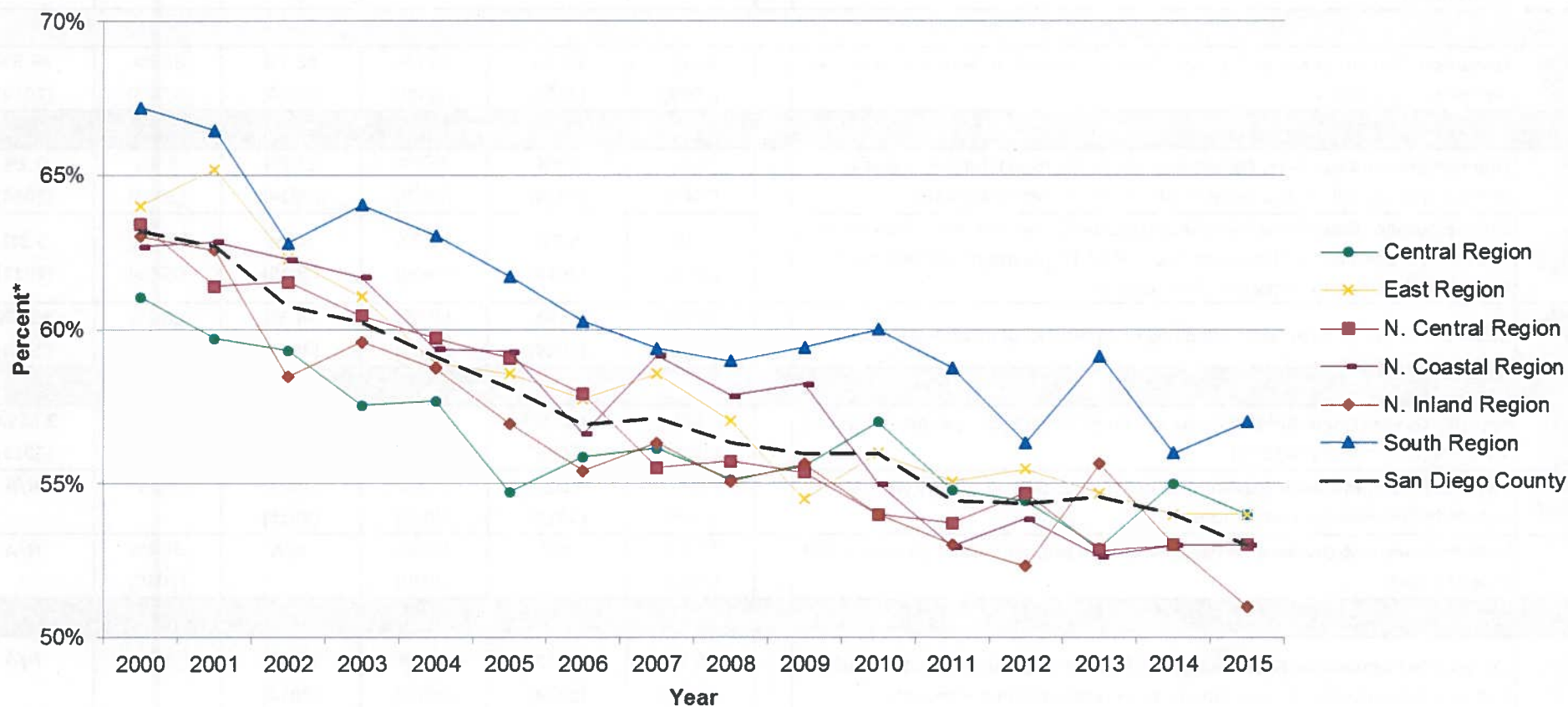


3-4-50 CHRONIC DISEASE DEATH PERCENTAGES, TREND 2000-2015



LIVE WELL
SAN DIEGO

3-4-50 Death† Percentages* Among San Diego County Residents, 2000-2015



Note: 2014 and 2015 Preliminary Data

†3-4-50 deaths include stroke, coronary heart disease (CHD), diabetes, COPD, asthma, and cancer.

*3-4-50 deaths as a percentage of all cause deaths. Rates per 100,000 population.

Source: California Department of Public Health, 2000-2013 Death Statistical Master Files, 2014-2015 California Vital Records Business Intelligence System (VRBIS), SANDAG, Current Population Estimates, Received 03/2017.

Prepared by: County of San Diego, Health & Human Services Agency, Public Health Services, Community Health Statistics Unit, 2017.