



HEPATITIS A INFECTION



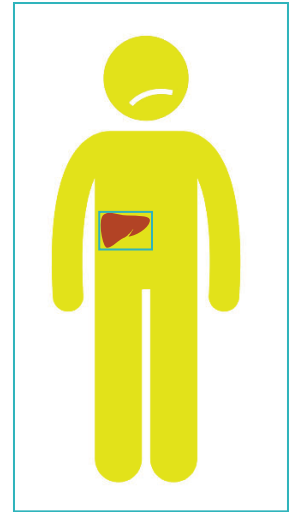
WHAT IS HEPATITIS?



“Hepatitis” means inflammation of the liver

Can be caused by alcohol, infection, toxins, medication, or some medical conditions

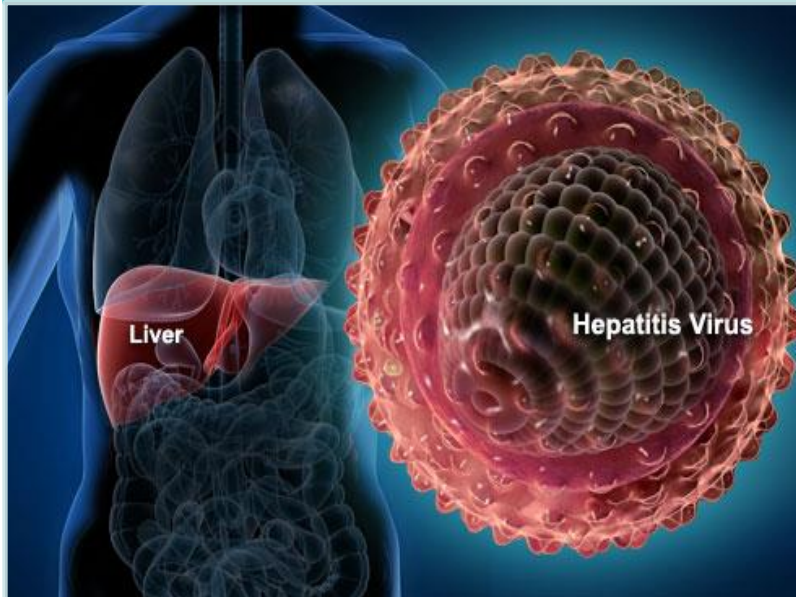
Can be temporary (acute) or long term (chronic) depending on whether it lasts more or less than six months



WHAT IS VIRAL HEPATITIS?



**Caused by a
virus**



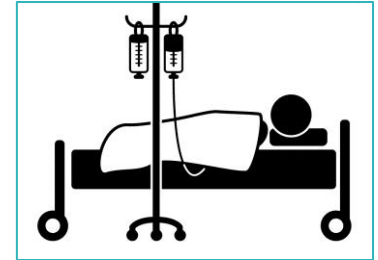
**Most common
types are:**

- **Hepatitis A**
- **Hepatitis B**
- **Hepatitis C**

WHY IS IT IMPORTANT?



Hepatitis A can easily spread from person-to-person



Can cause liver disease lasting a few weeks to a serious illness lasting several months

Can cause death in some cases

Large increase in monthly cases

Cases include persons with substance abuse problems, homeless, few are travelers

No common sources of infection identified

Investigations continuing

County outreach to vulnerable populations



WHAT IS DIFFERENT ABOUT THIS OUTBREAK?



CURRENT HEPATITIS A OUTBREAK

- Large increase in monthly cases
- Few are travelers
- Many cases hospitalized
- Several deaths

NORMAL

- About 2 cases per month
- Most are travelers
- Few cases hospitalized
- No deaths



HOW DOES IT SPREAD?



***Ingestion of fecal matter,
even in microscopic amounts, from:***

**Touching objects
or eating food that
someone with a
Hep A infection
handled**

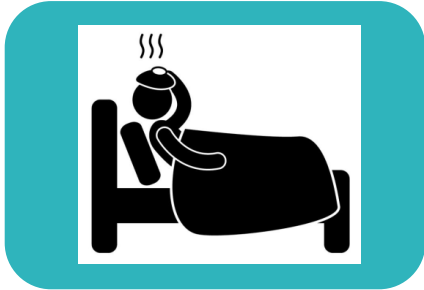
**Close person-to-
person contact
with an infected
person**

**Use of recreational
drugs, whether
injected or not**

**Sexual contact
with someone who
has a Hep A
infection**



WHAT ARE THE SYMPTOMS?



Fever



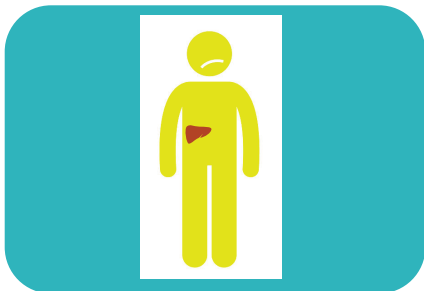
Fatigue



Nausea



Loss of Appetite



Jaundice



Stomach Pain



Vomiting



**Dark Urine, Pale
Stools and
Diarrhea**

HEPATITIS A SYMPTOMS

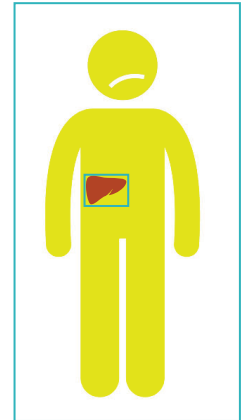


Not everyone has symptoms

Usually develops 2 to 6 weeks after infection (commonly within 4 weeks)

More likely to occur in adults than in children

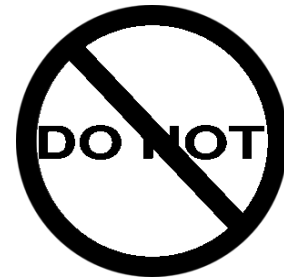
Usually lasts less than 2 months. But can last up to 6 months



DON'T SPREAD HEPATITIS A!



Don't prepare food if you have symptoms



Don't handle food for other people if you have symptoms

Don't serve food to other people if you have symptoms

HANDWASHING CAN HELP PREVENT THE SPREAD OF HEPATITIS A



Wash your hands carefully...

- **After using the bathroom or toilet**
- **After helping someone else use the toilet**
- **After changing a diaper**
- **Before you touch or cook food**



WHO IS AT RISK?



Travelers to certain countries

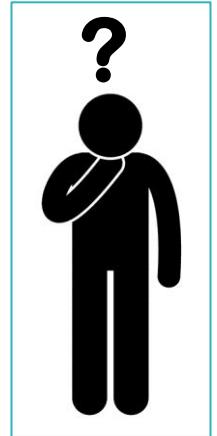
Men who have sex with men

Injection drug users

Persons with clotting factor disorders

Homeless persons

Persons who work in certain professions



HOW CONTAGIOUS IS IT?



A PERSON INFECTED WITH HEPATITIS A:



May be contagious up to 2 weeks before jaundice (yellowing of skin or eyes) appears and up to one week afterwards.

HOW IS IT DIAGNOSED?



A doctor can diagnose hepatitis by discussing symptoms.

Lab tests can confirm the liver is inflamed and special tests lab look for viruses, like hepatitis A.

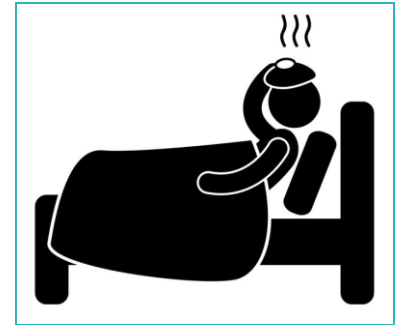


HOW IS IT TREATED?



There is no anti-viral medical treatment.

Supportive care is needed, sometimes in the hospital: fluids, rest, nutrition.



IF YOU THINK YOU HAVE IT....



See your doctor

Visit the closest Emergency Room

Wash your hands with soap and water after using the bathroom

Do not serve or prepare food for other people or provide healthcare



WHERE CAN I GET VACCINE?



Your personal doctor

A community clinic

A County public health center

Some commercial pharmacies

Call 2-1-1 to find a clinic near you



FOR MORE INFORMATION



**Call the County Immunization Program
Nurse's Line at 1-866-358-2966, option 5**