



# CONNECTING CITY AND COUNTY GOVERNMENTS TO PROMOTE PUBLIC HEALTH: *A KRESGE INITIATIVE*

---

*Wilma Wooten, MD, MPH, Public Health Officer & Director,  
Public Health Services  
Health and Human Services Agency, County of San Diego*

*Health Services Advisory Board  
September 3, 2019*





THE  
KRESGE  
FOUNDATION

## The Kresge Foundation



- The Kresge Foundation is a U.S. philanthropic private foundation headquartered in Troy, Michigan
- The foundation works to expand opportunities in America's cities through grant-making and investing in:
  - arts and culture,
  - education,
  - environment,
  - health,
  - human services, and
  - community development efforts



- Funded by the Kresge Foundation
  - Philanthropic organization focused on transformational change in communities
- Supports health departments as they adopt a new role
- Public Health Services' new role:
  - **Public Health Cross-Jurisdictional Strategist**



**EMERGING LEADERS  
IN PUBLIC HEALTH**



**Role:** Public Health Services' transformative role is to become a **Cross-Jurisdictional Public Health Strategist**. The AIM is to proactively and emergently engage the 19 jurisdictions of San Diego County as a trusted public health authority and leader.

**Functions are to:**

- **Build capacity** for the local health department and municipalities to establish clear enhance rapid response, as needed.
- **Communicate** with city jurisdiction on routine and emergent public health issues to enhance rapid response, as needed.
- **Develop coordinated relationships** with city government departments, such as administration, planners, law enforcement, and housing, to address routine and emergent public health concerns.



## The Public Health Cross-Jurisdictional Strategist will:

- Convene the various sectors of municipalities, starting with **city planners** from all 18 municipalities and the unincorporated areas over the next 6 months to address shared health concerns **and emergency managers** to address public health threats
- Use data and city priorities to identify focus areas
- Bring in experts, provide technical assistance, and share resources to address focus areas with a policy, systems, and environmental (PSE) approach



**To foster trusted and proactive relationships between City governments and the local health department.**





The intent of the San Diego County Kresge Initiative is for City and County leaders to work more closely together to identify and focus on mutual goals to improve health outcomes for our local region.

Meet with **City Managers** or their designee of all **18 municipalities** and **unincorporated areas** individually over the next 6 months to discuss initiative

**Greater collaborative efforts** between various **city sectors**, such as:

- **City planners**
- Law enforcement
- **Emergency managers**
- Environmental health
- Parks and recreation

**Enhanced communication, coordination, and collaboration** between City and County regarding routine public health issues and public health threats and emergencies



**Local city governments will view the local health department as the “go-to”, trusted, and proactive partner to address public health matters.**



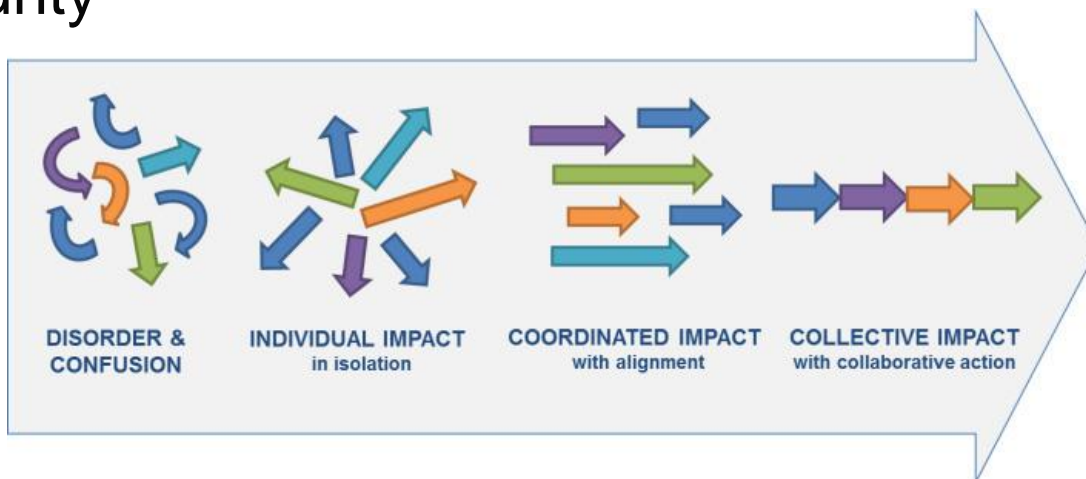




# IMPORTANCE OF CITY-COUNTY COLLABORATION



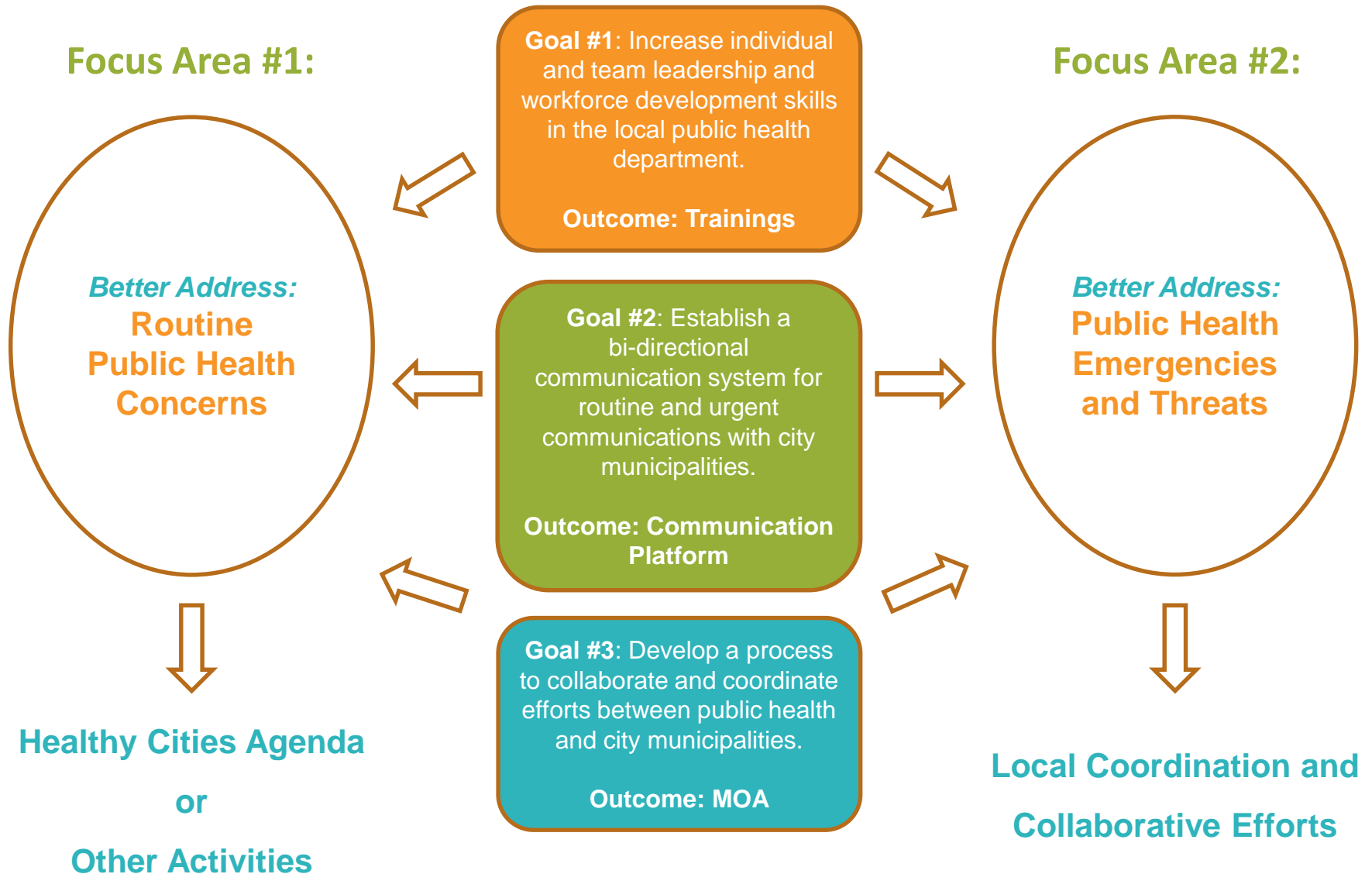
- Collective impact during hepatitis A outbreak
- Strengthening partnerships to address:
  - Routine regional health concerns **AND**
  - Public health emergencies and threats
- Enhanced communication and collaboration between city and county





- **Goal #1:** Increase individual and team leadership and workforce development skills in the local public health department
- **Goal #2:** Establish a bi-directional communication system for routine and urgent communication with city municipalities
- **Goal #3:** Develop a process to coordinate and collaborate efforts between public health and city municipalities

# OVERVIEW





## Kresge Emerging Leaders in Public Health Initiative

### Healthy Communities



### Healthy Communities Agenda

OUTCOMES

- ✓ Cities agree on activities in 3 groups:
  - Building Better Health*
  - Living Safely*
  - Thriving*
- ✓ Address individual issues as identified
  - ✓ Other

### Public Health Threats



# FEEDBACK & QUESTIONS





## For more information contact:

**Wilma J. Wooten, M.D., M.P.H.**

Health Officer & Director

Public Health Services

County of San Diego Health and Human Services Agency

3851 Rosecrans Street (MS: P-578)

San Diego, CA 92110

Phone: (619) 542-4181

[wilma.wooten@sdcounty.ca.gov](mailto:wilma.wooten@sdcounty.ca.gov)

[www.LiveWellSD.org](http://www.LiveWellSD.org)