



Health Services Advisory Board Meeting Public Health Services Report

April 7, 2026





Public Health Officer Update

Sayone Thihalolipavan, M.D., M.P.H.
Public Health Officer
Public Health Services



Respiratory Virus Surveillance

Highlights

San Diego County Respiratory Virus Surveillance Report

Prepared by Epidemiology and Immunization Services Branch

www.sdepi.org

April 2, 2026

COVID-19

Hospitalizations
2,204

Deaths
84

Outbreaks*
110

6/29/2025 – 3/28/2026

Influenza

Hospitalizations
2,561

Deaths
60

Outbreaks*
32

6/29/2025 – 3/28/2026

RSV

Hospitalizations
651

Deaths
10

Outbreaks*
6

6/29/2025 – 3/28/2026

*In residential congregate settings

Updated April 2, 2026. Data through March 28, 2026. Data are preliminary and subject to change.

https://www.sandiegocounty.gov/content/sdc/hhsa/programs/phs/community_epidemiology/dc/respiratoryviruses/surveillance.html

https://www.sandiegocounty.gov/content/dam/sdc/hhsa/programs/phs/Epidemiology/SDC_Respiratory_Virus_Surveillance_Report.pdf

COVID-19, Influenza, and RSV Cases by CDC Episode Week,* 2025-26 Season-to-Date

Figure 1.1. San Diego County COVID-19 Cases
(N=11,940)

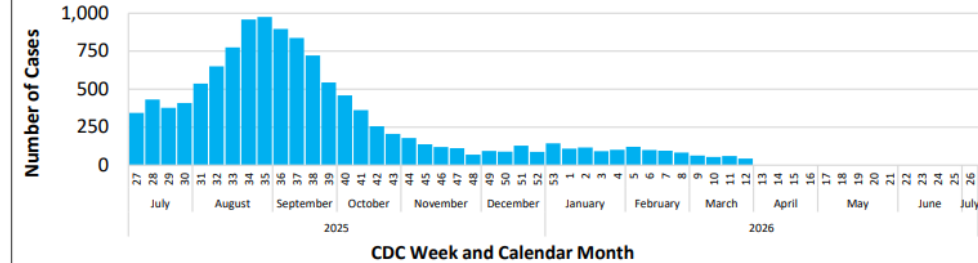


Figure 1.2. San Diego County Influenza Cases
(N=22,718)

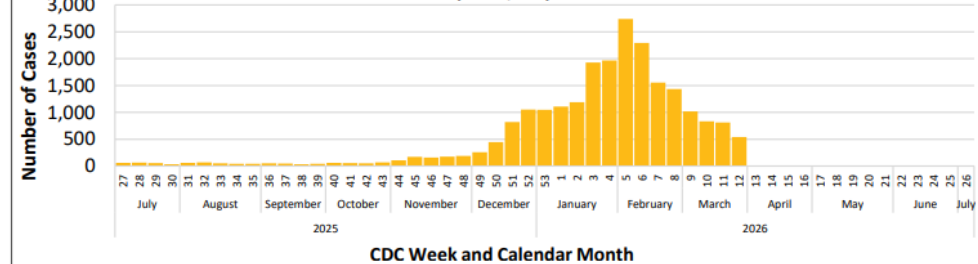
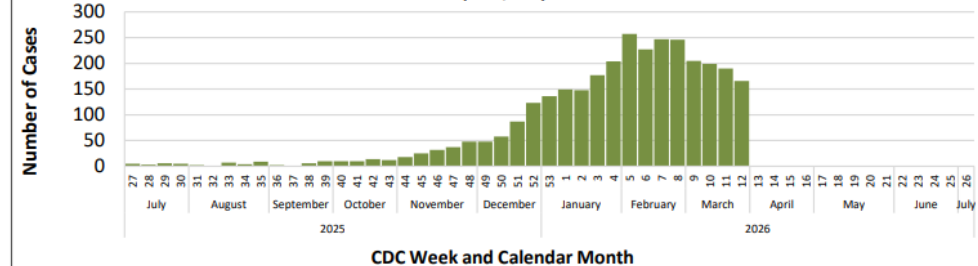


Figure 1.3. San Diego County RSV Cases
(N=3,134)



*Episode date is the earliest available of symptom onset date, specimen collection date, date of death, date reported. Data for the most recent week may be incomplete.



March 12 Health Alert: CDPH Recommends Immunizing Infants with RSV Monoclonal Antibodies through April 2026

Key Messages

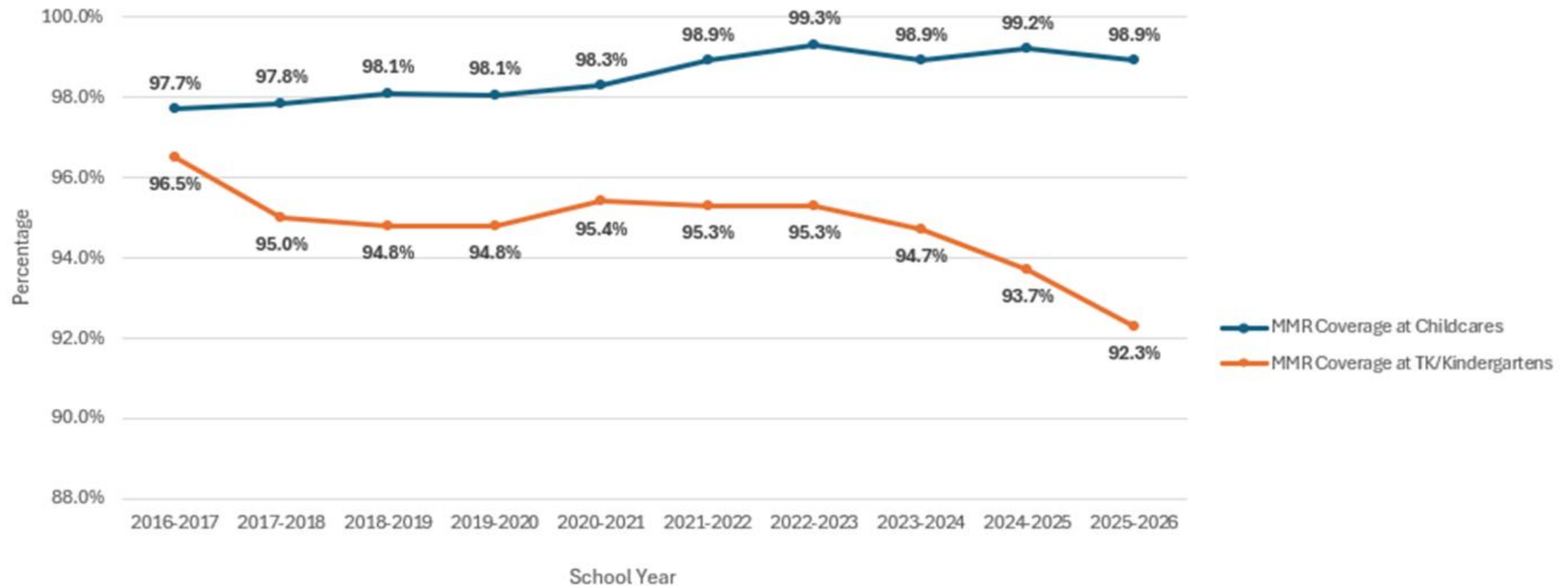
- Respiratory Syncytial Virus (RSV) transmission is continuing throughout California. In [San Diego County](#), the 2025-2026 RSV season started late and RSV activity remains elevated. For the week ending March 7, 2026, RSV test positivity was 8% among all ages.
- • The California Department of Public Health (CDPH) issued a [health alert](#) on March 10, 2026, extending RSV immunization of eligible infants and young children with RSV monoclonal antibody products through April 30, 2026.
- • The Vaccines for Children (VFC) program provides nirsevimab and clesrovimab at no cost for providers immunizing children who are: Medi-Cal eligible, uninsured, underinsured, and American Indian/Alaska Native.
- • Under [AB144](#), California regulated health plans are required to cover RSV immunization based on CDPH guidance.



2016-2026 Kindergarten Immunization Coverage Over Time



Percent of children up to date* with MMR Vaccine at Childcares (n=32,560) and Kindergartens (n=53,331) in San Diego County by School Year



*The data shown above reflects self-reported data by childcares and schools with Kindergarten and 7th grade levels who are eligible to report. UTD means children in childcare ages 18 months to 5 years who have received 1 dose MMR and in Kindergarten ages 4 years and older who have 2 doses of MMR. Doses must be given on or after the 1st birthday to count toward the

County Urges Residents Throw Out Cheddar Cheese Linked to E.coli Outbreak



By [Fernanda Lopez Halvorson](#), County of San Diego Communications Office

Apr. 2, 2026 | 5:28 PM

- County Public Health officials are warning people not to eat RAW FARM raw cheddar cheese because it has been linked to a Shiga-toxin producing E.coli outbreak that has made two people in San Diego sick.
- On April 2, [the company issued a voluntary recall](#) on its raw milk cheddar cheese (original and jalapeno flavored), shredded and block products.
- County health officials recommend people throw away any RAW FARM raw cheddar cheese products (original and jalapeno flavored) purchased after Jan. 4, 2026.
- RAW FARM has been linked to previous outbreaks involving unpasteurized, or [“raw,” milk products](#). The largest raw milk outbreak in U.S. history was identified in San Diego in 2023–24.

[County Urges Residents Throw Out Cheddar Cheese Linked to E.coli Outbreak | News | San Diego County News Center](#)

County Employees Start Donating to 42nd Annual Blood Drive



Video by [José Eli Villanueva](#)

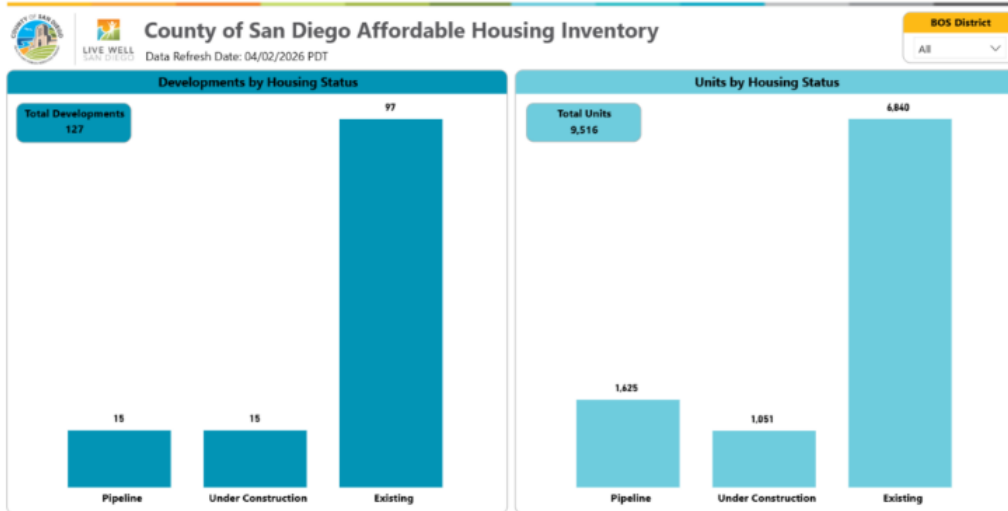
By [Cassie N. Saunders](#), County of San Diego Communications Office

Apr. 1, 2026 | 2:24 PM

- The 42nd annual County Blood Drive event kicked off Wednesday outside the downtown County Administration Center in front of the San Diego Blood Bank's mobile donation center.
- It is the third longest running blood drive in the San Diego Blood Bank's history and helps supply the approximately 350 pints of blood local hospitals need each day. One in seven people entering a hospital need blood.
- The County's annual blood drive is among the largest collection events organized by the San Diego Blood Bank. Both County and non-County employees are welcome to sign up and donate.
- [Book and appointment today.](#)

[County Employees Start Donating to 42nd Annual Blood Drive | News | San Diego County News Center](#)

County Launches New Dashboard Showing Affordable Housing Inventory



Data reflects total developments and units funded by the County of San Diego since 1980.

By [Fernanda Lopez Halvorson](#), County of San Diego Communications Office

Apr. 2, 2026 | 9:56 AM

- The County has launched a new [interactive dashboard](#) that gives residents a real-time look at the region's affordable housing inventory.
- The dashboard offers users a clearer picture of how affordable housing is growing across the region, including for those with income restrictions, people experiencing or at risk of homelessness and those with disabilities.
- The Affordable Housing Inventory dashboard is viewable as part of the County's new [Housing for All Hub](#), a one-stop site for housing resources, services, data. It also features the [Affordable Housing Map](#) showing eligibility guidelines and property information.

[County Launches New Dashboard Showing Affordable Housing Inventory | News | San Diego County News Center](#)

We all need to become better science storytellers. Here's why and how.



- Stories are not the default way most people communicate about science and public health. Health professionals are taught to take all the emotion out of data. However, if people can't see themselves in it, feel themselves in it, or influence it, how can we ask them to support it?
- Scientific evidence [shows](#) that when people listen to a story (versus a jumbled, out-of-order version), more of their brain lights up, and their brain patterns start to match those of other listeners and even the [person telling the story](#). This mental sync-up is actually a good predictor of how much someone will remember later.

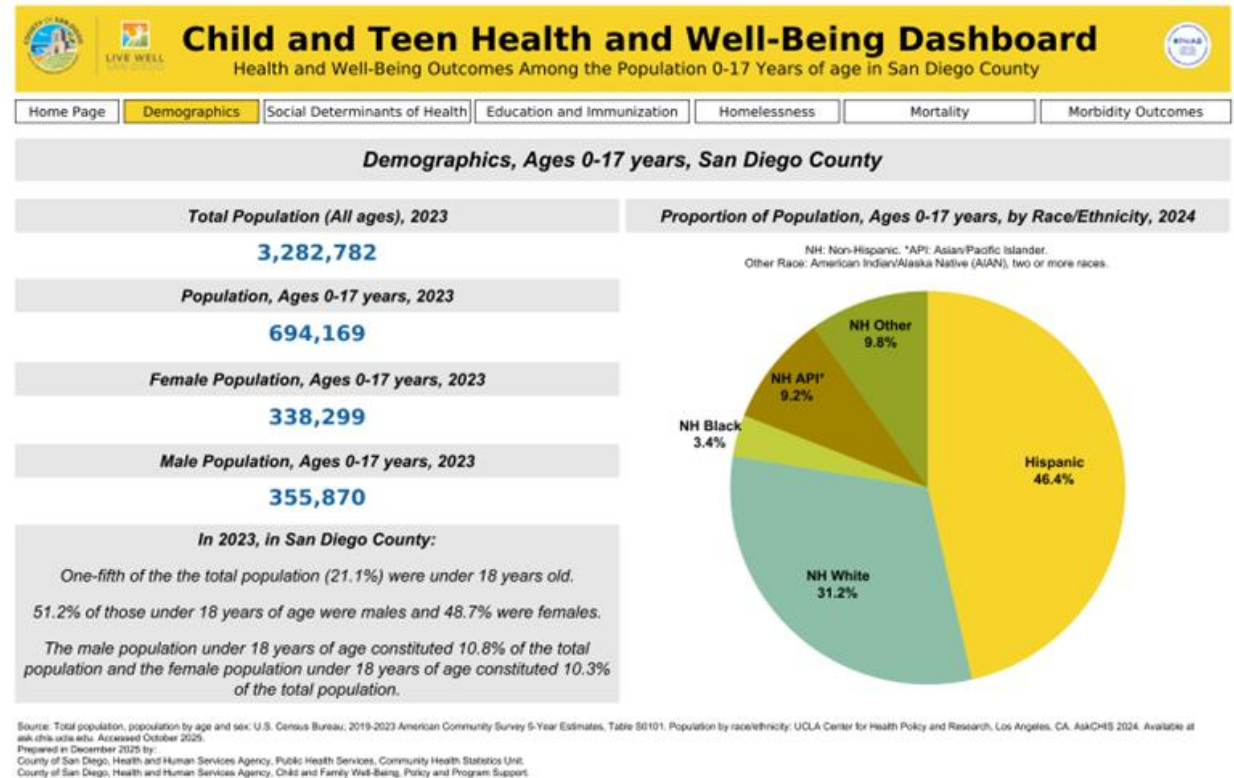
- [Study](#) after [study backs this up](#): *people remember information better when it's delivered as a story rather than a list of facts or [statistics](#).*

High-level tips for scientists to become better storytellers

1. **Just Start:** Try writing and telling stories. Practice speaking it and edit from there.
2. **Know Your One Thing:** Build your story around piece(s) of information someone will remember.
3. **Find Your Story:** Tell your story that connects to the thing you want someone to learn.
4. **Craft the Narrative:** Start with a hook, then tell the story. Add detailed setting and emotion. End strong.
5. **Let the Science Emerge from the Story:** Don't lead with data or definitions. Tell the human experience first.

Child and Teen Health and Well-Being

- The **Child and Teen Health and Well-Being** dashboard and brief highlight data for the population 0-17 years of age in San Diego County, including demographics, social determinants of health, education, immunization, homelessness, mortality and morbidity outcomes.
- Dashboard: [Child and Teen Health and Well-Being Dashboard | Tableau Public](#)
- Brief: [Child and Teen Health and Well-Being Brief](#)

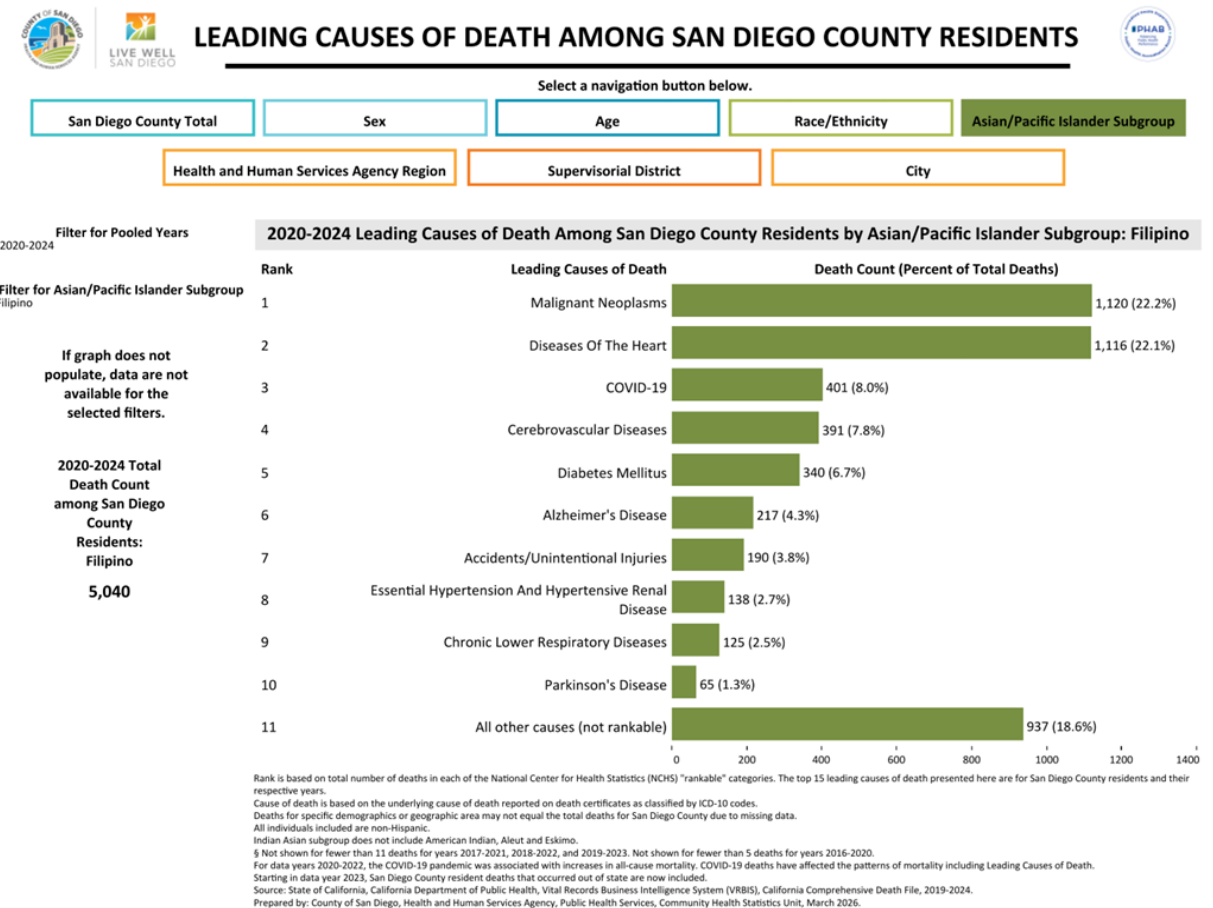


Leading Causes of Death

- The **Leading Causes of Death dashboard and tables** display the top causes of death among San Diego County residents by year, sex, age group, race/ethnicity, Asian/Pacific Islander subgroup, and HHS Region, Supervisorial District and City.

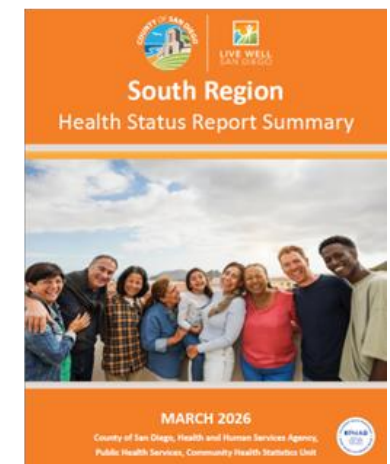
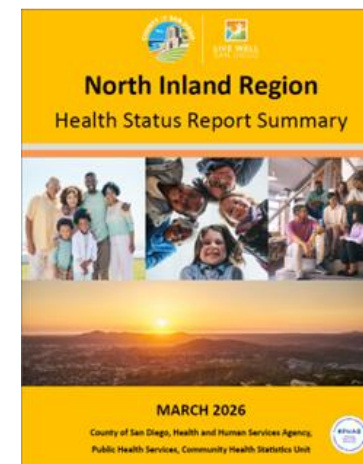
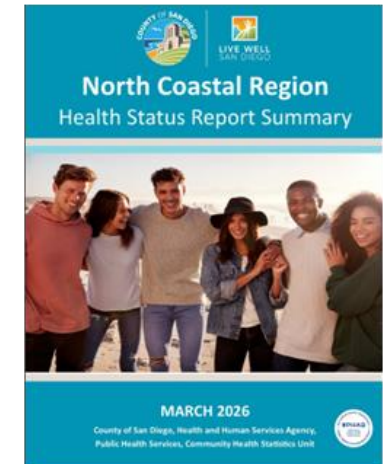
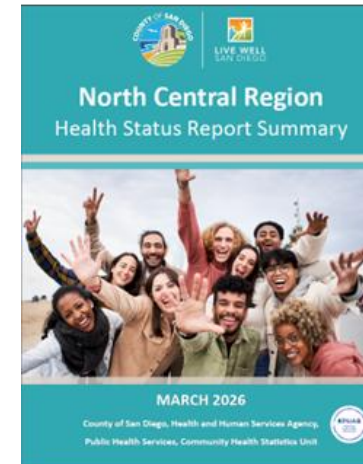
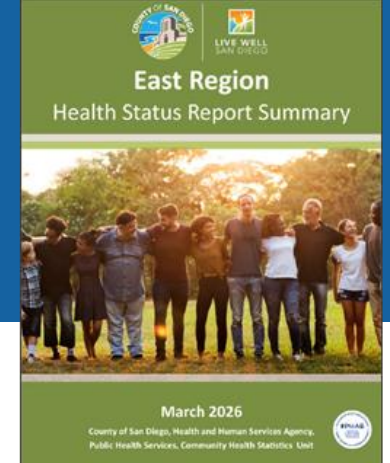
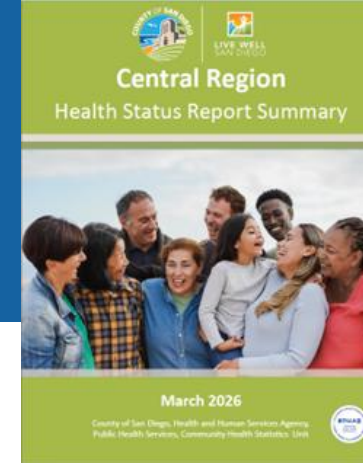
- Dashboard: [Leading Causes of Death Among San Diego County Residents | Tableau Public](#)

- Tables: [CHSU Mortality Data - Leading Causes of Death](#)



Regional Health Status Reports

- The **Regional Health Status Reports** provide an overview of each HHSA Region and its subregional areas, highlighting key takeaways from health and sociodemographic data.
- [Central Region Health Status Report](#)
- [East Region Health Status Report](#)
- [North Central Region Health Status Report](#)
- [North Coastal Region Health Status Report](#)
- [North Inland Region Health Status Report](#)
- [South Region Health Status Report](#)





DHCS Hosting Public Best Practices Webinar on April 17



▶ *PATH Upcoming Events*

Friday, April 17, 2026, 10 to 11 a.m. PDT

"Accelerating Improvement with the California Advancing and Innovating Medical (CalAIM) Collaborative Planning and Implementation (CPI) Best Practices and Sustainability Toolkits"

The webinar is part of a biannual series of PATH CPI webinars designed to highlight best practices for implementing Enhanced Care Management (ECM) and Community Supports, increase providers' successful participation in CalAIM, and improve collaboration with Medi-Cal health plans, state and local government agencies, providers, and community-based organizations to build and deliver quality benefits and services to Medi-Cal members.

Accelerating Improvement with the CalAIM CPI Best Practices and Sustainability Toolkits

Friday, April 17, 2026 | 10 to 11 a.m. PDT

Register at: [Webinar Registration - Zoom](#)

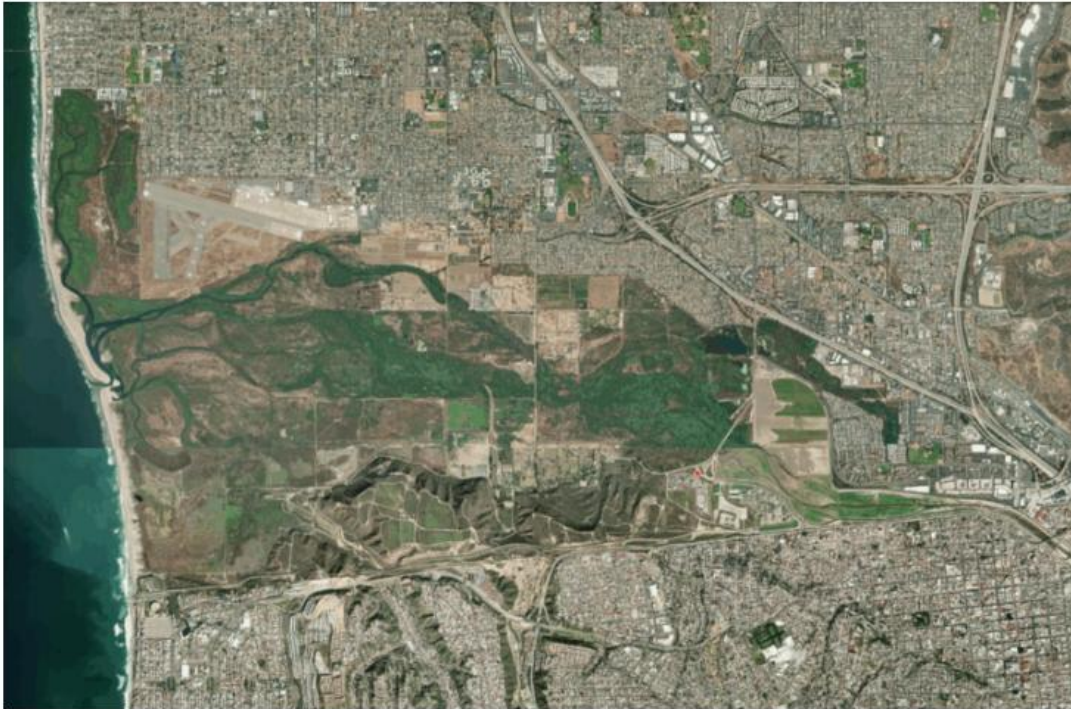


LIVE WELL
SAN DIEGO

Tijuana River Valley Sewage Crisis Updates



Weekend Tijuana River Valley H2S Emissions Exceeded Federal Guideline



By [Fernanda Lopez Halvorson](#), County of San Diego Communications Office
Apr. 6, 2026 | 5:05 PM

- People in the South Bay this past weekend, especially those living near the Tijuana River Valley (TJRV), experienced high hydrogen sulfide (H₂S) emissions, often recognized by a strong rotten egg smell.
- San Diego Air Pollution Control District monitors reported the average hydrogen sulfide emissions in the Tijuana River Valley in the four-hour period between 9 p.m. Sunday and 1 a.m.
- The County continues to work together with SDAPCD and other partners to monitor conditions and update the public the affected South Bay communities.

[Weekend Tijuana River Valley H2S Emissions Exceeded Federal Guideline | News | San Diego County News Center](#)



Public Health Director Update

Adrienne Yancey, M.P.H.
Interim Public Health Director
Public Health Services



Public Health Services



BOARD LETTER FORECAST

Board Meeting Date	Subject
April 21, 2026	Authorize acceptance of funding for the Refugee Health Programs (RHAP/RHPP) and apply for future funding opportunities
April 21, 2026	Authorize acceptance of funding for Sexually Transmitted Infection Prevention and Collaboration, from CDPH
May 19, 2026	Authorize acceptance of funding from California Department of Public Health for Future of Public Health Funding
July 14, 2026	Authorize acceptance of funding from California Department of Public Health for the Maternal, Child, and Adolescent Health Program and the California Home Visiting Program Innovation 3.0 Funding Award
July 14, 2026	Authorize acceptance of funding from California Department of Public Health for the Black Infant Health Program and the Perinatal Equity Initiative
August 18, 2026	Authorize acceptance of funding from the CDC for Strengthening US Public Health Infrastructure and Workforce via the Public Health Infrastructure Grant
September 15, 2026	Authorize Certification Statements for California Children’s Services Programs

Highlight: 2026 Binational Symposium for Emergency Care for Pediatrics and Adults

- The Office of Border Health coordinated the 1st Binational Symposium on Emergency Care for Pediatric and Adult Patients at CECUT (Tijuana Cultural Center), Baja California, on both Wednesday and Thursday, January 21st through 22nd, 2026 from 8:00 a.m. to 3:00 p.m. (PST).
- This symposium was a collaborative effort with Hospital Florence, Florence Health, UC San Diego Health, Center for Regulatory Emergencies (CRUM) Baja California, and Rady Children's Health.
- With **295 total attendees**, this symposium brought together emergency medicine physicians, pediatricians, public health professionals, medical students, and community leaders committed to advancing emergency care for pediatric and adult health through shared knowledge, clinical workshops, and binational partnerships.



LIVE WELL
SAN DIEGO

2026

Ready. Set. Action!

Live Well San Diego Public Health Champion Awards Ceremony

Celebrating 25 Years of Public Health Champions



April 10, 2026
12:30 PM – 2:30 PM
Board Chambers
1600 Pacific Highway
3rd Floor, Room 310

RSVP at: <https://www.surveymonkey.com/r/Q9WJJ7V>



Health Services Advisory Board Meeting



Thank you!



The Public Health Services department, County of San Diego Health and Human Services Agency, has maintained national public health accreditation, since May 17, 2016, and was re-accredited by the Public Health Accreditation Board on August 21, 2023.