



# Health Services Advisory Board Meeting Public Health Services Report

June 2, 2026





# Public Health Officer Update

Sayone Thihalolipavan, M.D., M.P.H.  
Public Health Officer  
Public Health Services



# Respiratory Virus Surveillance

Highlights

## San Diego County Respiratory Virus Surveillance Report

Prepared by Epidemiology and Immunization Services Branch  
[www.sdepi.org](http://www.sdepi.org)

This report will be issued monthly on the second Thursday of the month.  
Weekly reporting will resume in October.

### COVID-19

Hospitalizations  
**2,244**

Deaths  
**88**

Outbreaks\*  
**110**

6/29/2025 – 5/9/2026

\*In residential congregate settings

### Influenza

Hospitalizations  
**2,634**

Deaths  
**71**

Outbreaks\*  
**33**

6/29/2025 – 5/9/2026

### RSV

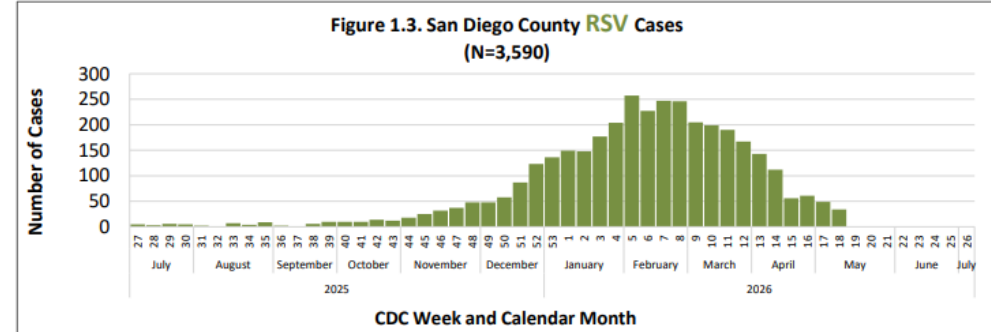
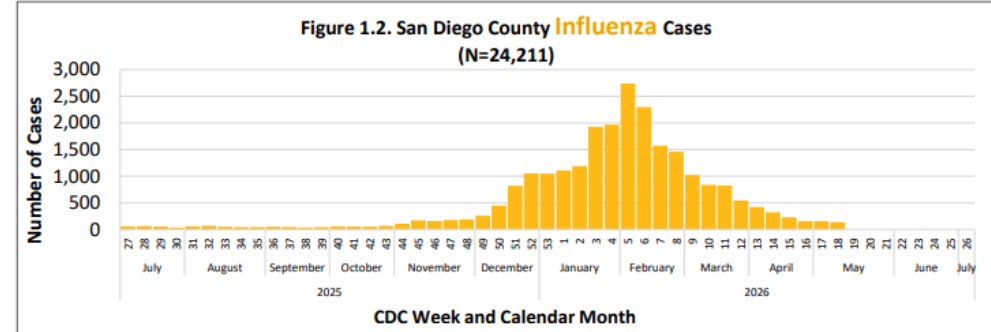
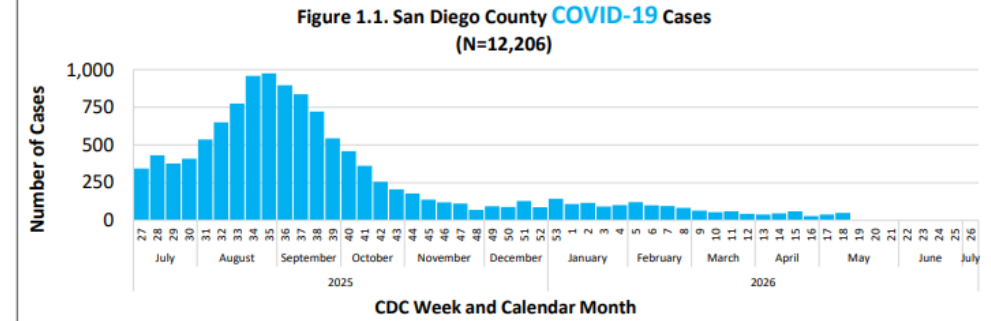
Hospitalizations  
**754**

Deaths  
**12**

Outbreaks\*  
**8**

6/29/2025 – 5/9/2026

COVID-19, Influenza, and RSV Cases by CDC Episode Week, \* 2025-26 Season-to-Date



\*Episode date is the earliest available of symptom onset date, specimen collection date, date of death, date reported. Data for the most recent week may be incomplete.

Updated May 14, 2026. Data through May 9, 2026. Data are preliminary and subject to change.

[https://www.sandiegocounty.gov/content/sdc/hhsa/programs/phs/community\\_epidemiology/dc/respiratoryviruses/surveillance.html](https://www.sandiegocounty.gov/content/sdc/hhsa/programs/phs/community_epidemiology/dc/respiratoryviruses/surveillance.html)

[https://www.sandiegocounty.gov/content/dam/sdc/hhsa/programs/phs/Epidemiology/SDC\\_Respiratory\\_Virus\\_Surveillance\\_Report.pdf](https://www.sandiegocounty.gov/content/dam/sdc/hhsa/programs/phs/Epidemiology/SDC_Respiratory_Virus_Surveillance_Report.pdf)

## County Reports Two Unrelated Measles Cases; Public Exposure Possible at Two Locations



*Image Credit: Shutterstock*

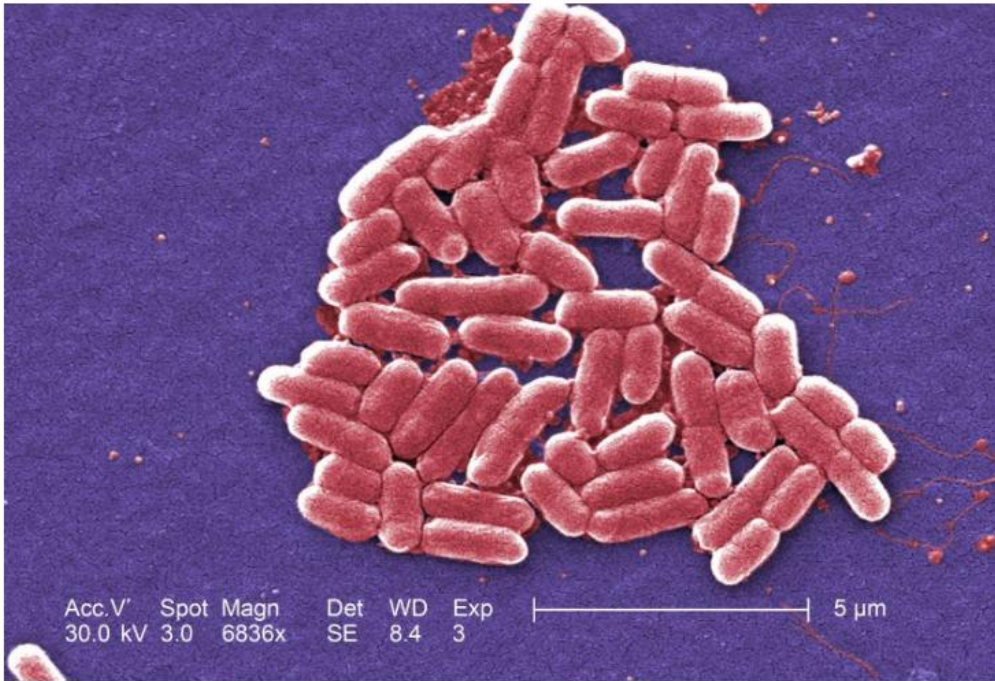
By [Fernanda Lopez Halvorson](#), County of San Diego Communications Office

May 23, 2026 | 10:00 AM

- County public health officials have confirmed two unrelated cases of measles.
- Both people who got sick travel to San Diego for work. One of the cases involved public exposure.
- Health officials say the infectious person, who did not have proof of measles vaccination, spent time at these locations:
  - Marriott Marquis San Diego Marina, on May 17.
  - Baskin Robbins in Imperial Beach, on May 20.
- The best prevention against measles is vaccination. With outbreaks reported in several states, officials urge everyone to ensure they are fully vaccinated, especially travelers.

[Tuberculosis Exposure Reported at Sunset Elementary School | News | San Diego County News Center](#)

## County Reports Two Local Cases in Statewide Kebab Shop E.Coli Outbreak



*E. coli* bacteria. Image source: Centers for Disease Control and Prevention.

By [Fernanda Lopez Halvorson](#), County of San Diego Communications Office  
May 22, 2026 | 6:28 PM

- County health officials are urging anyone who has eaten at The Kebab Shop restaurant chain between March 27 and April 30, 2026, and later became ill with a stomach illness to get medical care right away amid a statewide outbreak of Shiga toxin-producing *E. coli* (STEC).
- Locally, two people have become infected with STEC after eating at local The Kebab Shop locations. One was hospitalized but since released.
- Statewide, nine STEC cases across five counties are linked to the chain's beef kofta dish. Six patients are children. Five people have been hospitalized, and two developed hemolytic uremic syndrome (HUS).
- No deaths have been reported, and no cases outside California are currently connected to the outbreak.

[County Reports Two Local Cases in Statewide Kebab Shop E.Coli Outbreak | News | San Diego County News Center](#)

## County Warns Against Eating Sport-Harvested Mussels Amid Statewide Quarantine



Envato Elements

By [Fernanda Lopez Halvorson](#), County of San Diego Communications Office  
May 26, 2026 | 2:42 PM

- County health officials are reminding people not to eat sport-harvested mussels, clams, scallops or oysters unless they were purchased from a state-certified commercial shellfish harvester or dealer.
- The California Department of Public Health's annual quarantine of sport-harvested mussels is in effect through Oct. 31. The quarantine covers the entire California coast, including all bays and estuaries.
- [More information is available](#) from the County's Department of Environmental Health and Quality.

[County Warns Against Eating Sport-Harvested Mussels Amid Statewide Quarantine | News | San Diego County News Center](#)

## County Warns Residents as Amatoxin Mushroom Poisonings Rise



*Image Credit: California Department of Public Health*

By [Fernanda Lopez Halvorson](#), County of San Diego Communications Office  
May 21, 2026 | 9:55 AM

- County public health officials are urging residents to avoid foraging for and eating wild mushrooms as amatoxin-related mushroom poisonings continue to rise in parts of the state.
- Some wild mushrooms contain amatoxin, a potent toxin that can cause severe liver damage and may be fatal. Cooking, freezing or drying does not destroy amatoxins.
- According to the CDPH, eight new mushroom poisoning cases were reported in the last month as new blooms of amatoxin-containing mushrooms appear across the state, including in parts of Southern California.
- No cases have been reported this year in the County of San Diego.

[County Warns Residents as Amatoxin Mushroom Poisonings Rise | News | San Diego County News Center](#)

# CalFresh Work or Volunteer Requirements Begin June 1



*Credit: Adobe Express*

By [Cassie N. Saunders](#), County of San Diego Communications Office

May 15, 2026 | 8:01 AM

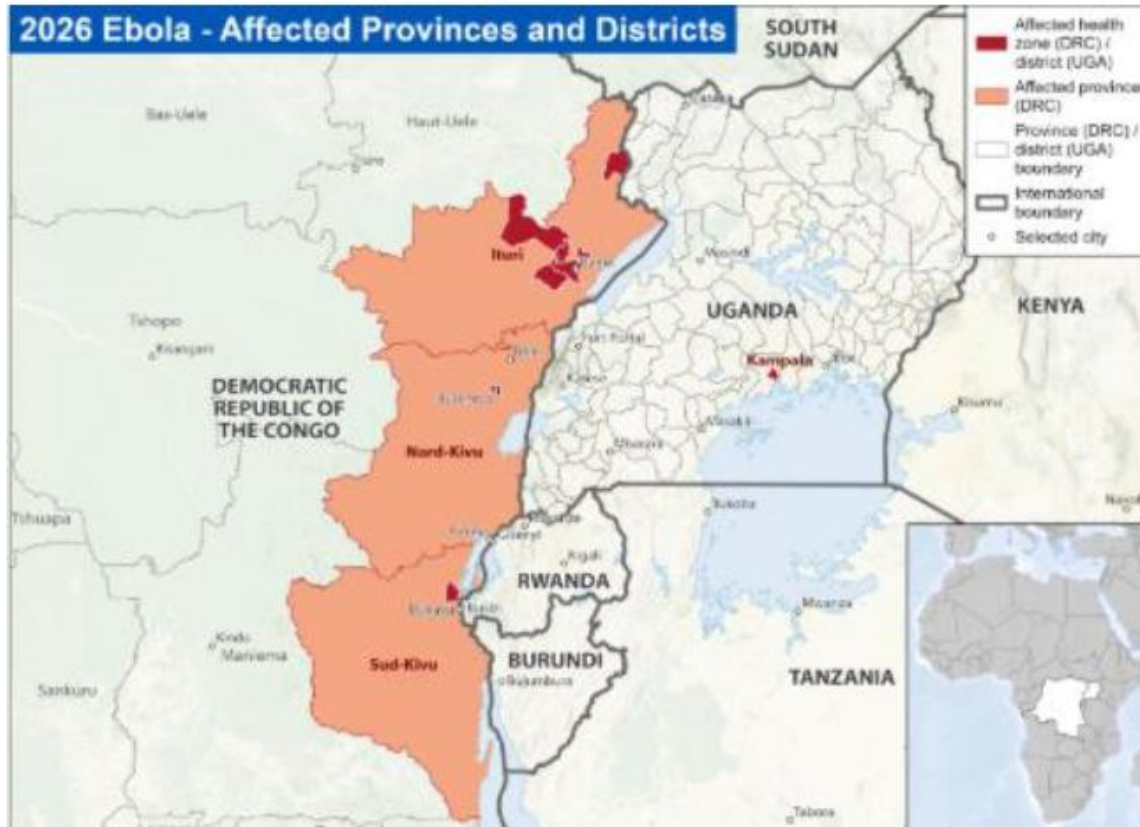
- New federal rules taking effect June 1, 2026, mean that some San Diego County residents who receive CalFresh food benefits will need to meet work or volunteer requirements to get or keep CalFresh food benefits.
- The County is urging affected residents to update their contact information in their [BenefitsCal](#) portal, check renewal dates, and respond when contacted by the County.
- People can call the Access Customer Service Call Center at 1-866-262-9881 with any eligibility questions.

[CalFresh Work or Volunteer Requirements Begin June 1 | News | San Diego County News Center](#)

**[\\*\\*SEE ALSO: County, 211 San Diego Launch New WorkReady Hub to Support CalFresh Work Requirements\\*\\*](#)**

# Current Ebola Outbreak Overview

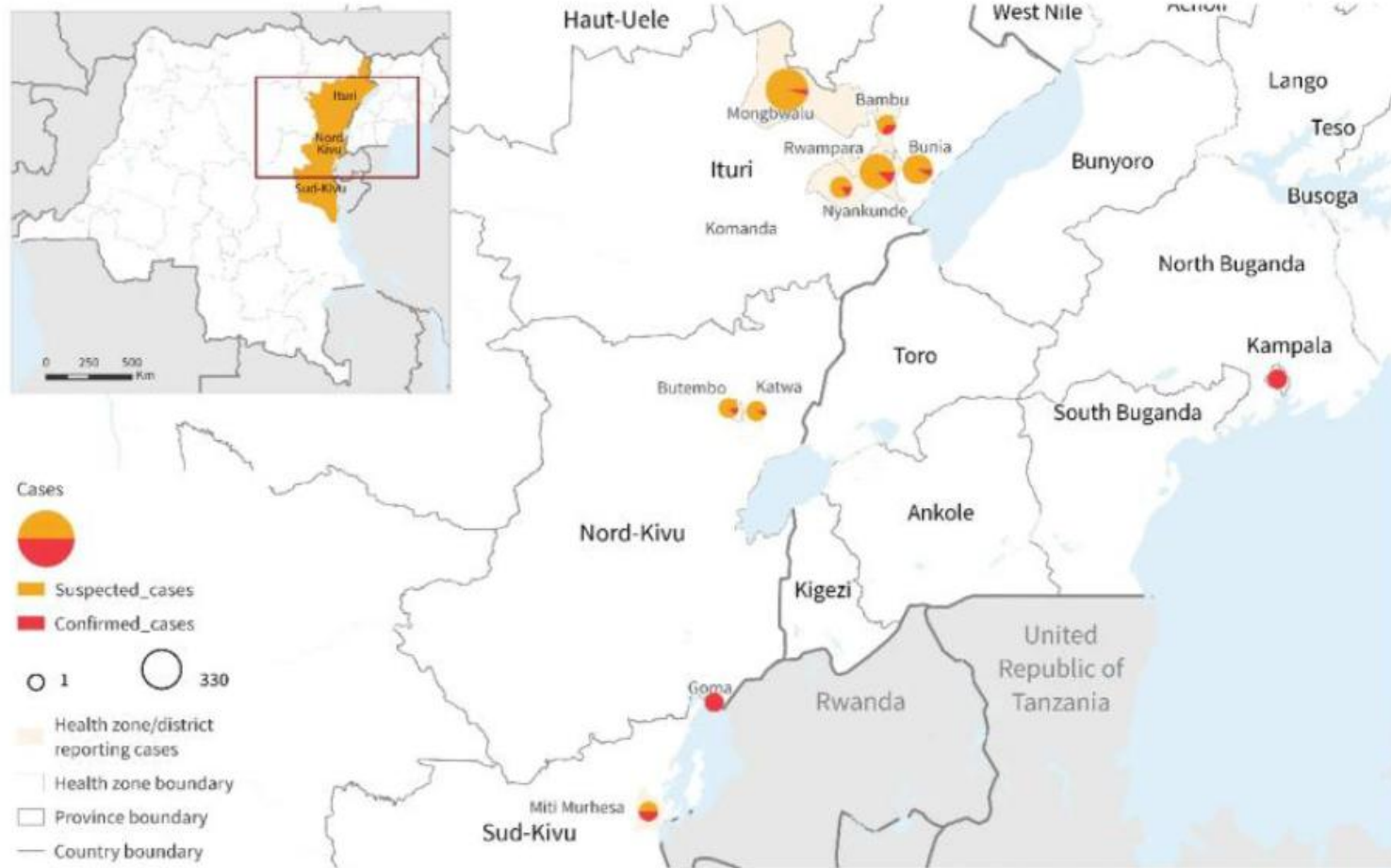
- Bundibugyo virus disease (BVD) outbreak originating in Ituri Province in northeastern DRC, with geographic spread and imported cases in Uganda



[CDC](#), 26 May 2026

- Ebola virus (EBOV) species confirmed as [\*Orthoebolavirus bundibugyoense\*](#)
- **No licensed vaccine or specific therapeutics**
- [CDC](#): No BVD cases reported in US: overall risk to U.S. public and travelers remains **low**
- Incubation period: 2-21 days
- CFRs for past two BVD outbreaks: 30-50%

# Current Ebola Outbreak Overview



The designations employed and the presentation of the material in this publication do not imply the expression of any opinion whatsoever on the part of WHO concerning the legal status of any country, territory, city or area or of its authorities, or concerning the delimitation of its frontiers or boundaries. Dotted and dashed lines on maps represent approximate border lines for which there may not yet be full agreement.

Data Source: World Health Organization, Ministry of Health Democratic Republic of the Congo, GRID3  
Map Production: WHO Health Emergencies Programme



© WHO 2016. All rights reserved.

## DRC:

125 confirmed cases  
17 confirmed deaths

906 suspected cases  
223 suspected deaths

## Uganda:

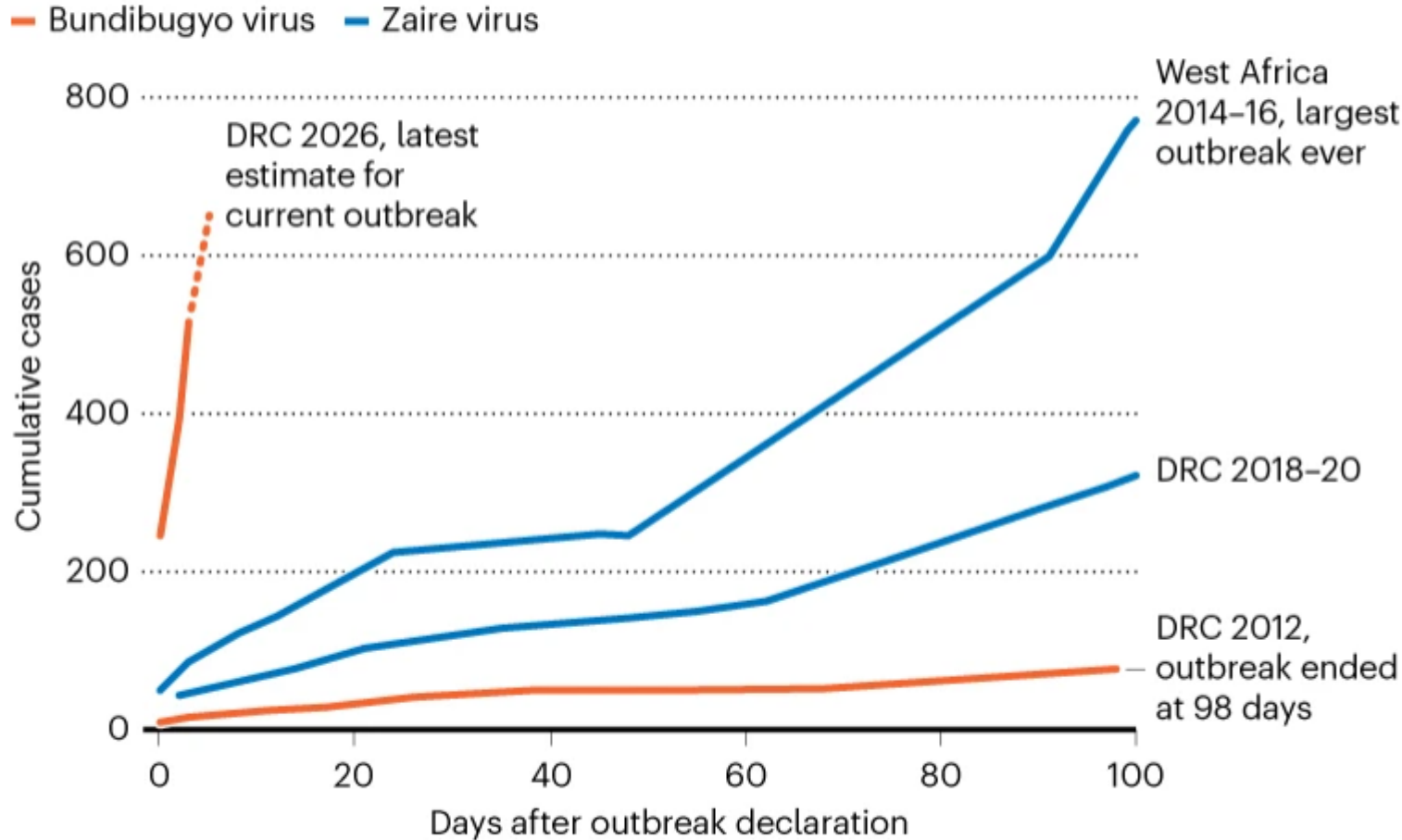
7 confirmed cases  
1 confirmed death

5 cases have clear links to  
the first 2 confirmed cases

[CDC | Ebola Outbreak: Current Situation](#)  
(accessed May 29)

# ALARMING TRAJECTORY

Researchers are concerned by how fast cases of Ebola are accumulating in the latest outbreak in the Democratic Republic of the Congo (DRC). Looking at the first 100 days of past incidents, outbreaks were declared after a few dozen cases had been found, and grew from there. But this one, caused by the rare Bundibugyo virus species, already had 246 suspected cases when it was declared an outbreak.



[Source: Nature 5/21/26 - Ebola outbreak: the data that show why researchers are so alarmed](#)



## May 20 Health Advisory: Ebola Disease Outbreak in the Democratic Republic of the Congo and Uganda

### Key Messages

- On May 18, 2026, the Centers for Disease Control and Prevention (CDC) issued the Health Alert to alert clinicians and health departments about a [new outbreak of Ebola disease](#) in the Democratic Republic of the Congo (DRC) and Uganda caused by the Bundibugyo virus (BVD) (species Orthoebolavirus bundibugyoense).
- No suspected, probable, or confirmed cases related to the outbreak have been reported in the U.S. The current risk to U.S. and California residents is low. However, it is possible for travelers from the affected areas to enter the U.S.
- Healthcare providers should routinely ask patients with acute and possibly infectious illness about international travel in the three weeks before symptom onset.
- Healthcare providers and clinical laboratories should immediately report cases of suspected Ebola Disease to the [County Epidemiology Unit](#) using the contact information below.





## May 19 Health Alert Update #1: Testing for Potential Hantavirus Infection

### Key Messages

- On May 8, 2026, the Centers for Disease Control and Prevention ([CDC](#)) issued a [Health Alert](#) and on May 11, [the California Department of Public Health \(CDPH\)](#) issued a [corresponding Health Alert](#) to inform clinicians and health departments about a new cluster of hantavirus disease caused by infection with [Andes virus](#) aboard the cruise ship M/V Hondius.
- On May 18, 2026, the [CDC issued a Health Alert](#) updating providers that assays designed to specifically detect Andes virus may not detect other New World hantaviruses endemic in the United States.
- Testing for Andes virus infection should only be considered in patients who
  - have symptoms compatible with hantavirus infection, AND
  - were aboard the M/V Hondius cruise ship OR had direct contact with someone associated with the M/V Hondius Andes virus outbreak.
- County of San Diego Public Health Services has confirmed with CDPH that no M/V Hondius cruise ship passengers or their direct close contacts have returned or will be returning to San Diego County.





## May 28 Health Advisory: Increase in E-Bike–Related Injuries in San Diego County: Prevention and Counseling Recommendations

### Key Messages

- E-bike–related injuries are increasing in San Diego County, with 865 ED visits and 186 hospitalizations in 2024; youth are disproportionately affected.
- Clinicians should incorporate brief counseling and screening into routine care, including helmet use, age-appropriate riding, and legal e-bike classifications.
- Screen for e-bike use during injury and well visits and use ICD-10 codes (V28.01XA, V28.41XA) to improve surveillance.

Safety of and regulations surrounding e-bikes vary depending on the class. [California Code, VEH 312.5](#) defines e-bikes in three classes:

- **Class 1 – pedal-assist only.** The motor engages only when the rider pedals. Maximum speed is 20 mph.
- **Class 2 – throttle + pedal-assist.** The motor can be propelled without pedaling in addition to pedal-assist. Maximum speed is 20 mph.
- **Class 3 – speed pedal-assist.** Some models include a throttle. Assisted speed is up to 28 mph. Not suitable for trails and bike paths.



# Upcoming E-Bike Safety Classes and Helmet Giveaways

- In response to the [rise in e-bike injuries](#), Lawson-Remer is planning to host several e-bike safety classes in communities throughout San Diego County in the coming months.
- The classes will provide in-person safety training for young riders and families.
- Lawson-Remer will also host bike helmet giveaways, with dates to be announced soon.

## DATES

### YMCA 6/27

Magdalena Ecke Family YMCA  
Gymnastics Center  
2261 Cosmos Ct, Carlsbad, CA 92011

### YMCA 7/25

Rancho Family YMCA  
9410 Fairgrove Ln,  
San Diego, CA 92129

### YMCA 8/22

Magdalena Ecke Family YMCA  
200 Saxony Rd, Encinitas, CA 92024

### YMCA 7/11

T. Claude & Gladys B. Ryan YMCA  
4390 Valeta St, San Diego, CA 92107

### YMCA 8/8

Dan McKinney Family YMCA  
8355 Cliffridge Ave, La Jolla, CA 92037

*The confirmed classes are three-hour, in-person bike safety trainings. Additional helmet giveaway dates will be announced soon.*



# E-Bike Injuries



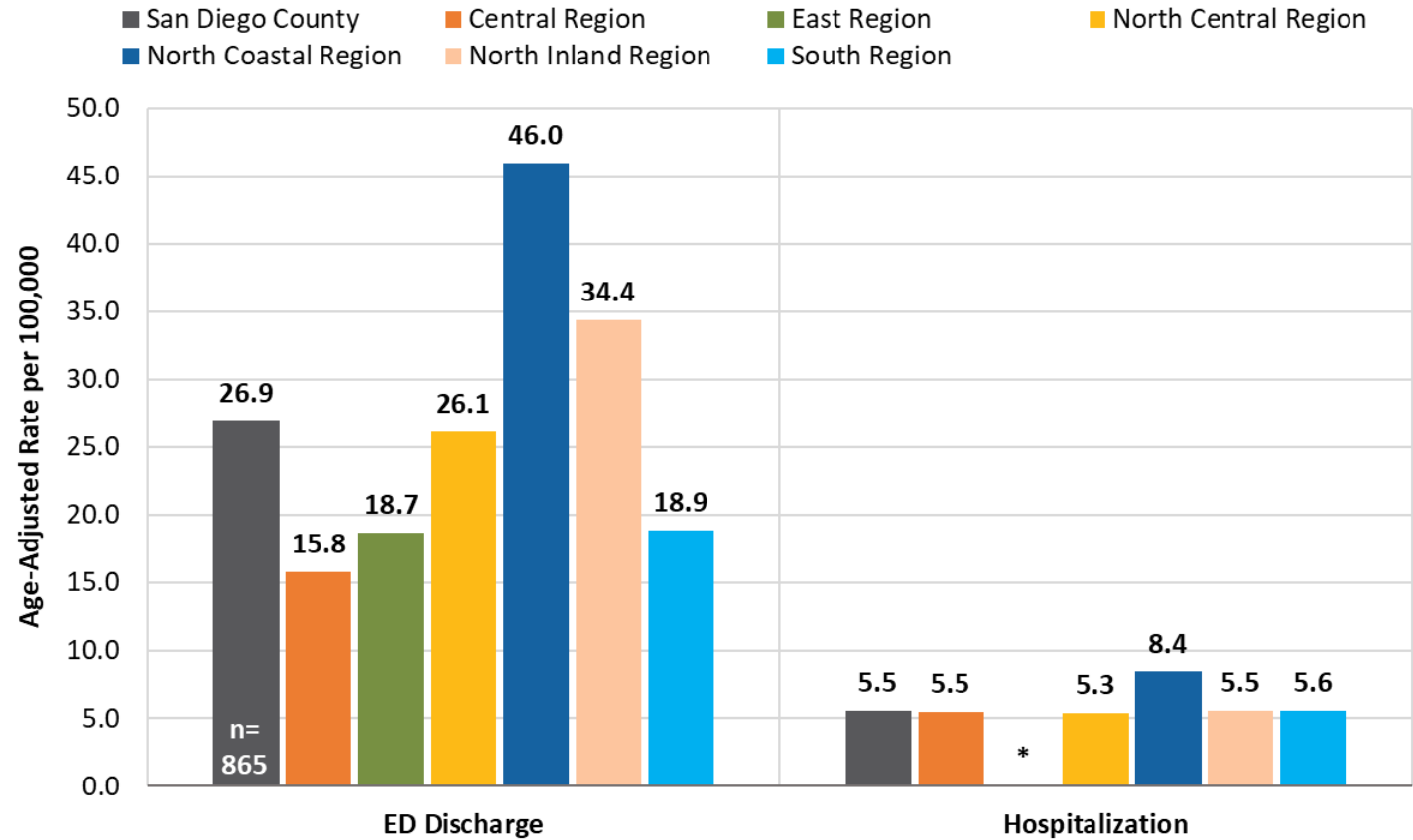
## Emergency Department Discharge and Hospitalization Rates, 2024

Among e-bike injuries in **San Diego County** in 2024, the rate of age-adjusted **emergency department (ED) discharge** was 26.9 per 100,000 residents and the rate of age-adjusted **hospitalization** was 5.5 per 100,000.

Among the HHS Regions, **North Coastal Region** had the **highest** age-adjusted **ED discharge and hospitalization rates** for **e-bike injury** in 2024.

There were **865 ED discharges** due to e-bike injuries in San Diego County in 2024; **437, or 51%, of these discharges were among 10–19-year-olds.**

Age-Adjusted Emergency Department Discharge and Hospitalization Rates for E-Bike Injuries in San Diego County and HHS Regions, 2024



\*Starting with data year 2022, rates based on events <20 are suppressed due to statistical instability.  
 Data Sources: California Department of Health Care Access and Information (HCAI), Emergency Department Discharge Database, 2024. SANDAG Population Estimates, 2024 (v24/2025). 2024 estimates were derived from the 2020 decennial census. Age-adjusted rates are adjusted to 2000 U.S. Standard Population.  
 Prepared by County of San Diego, Health and Human Services Agency, Public Health Services, Community Health Statistics Unit, 2026.

# 2024 Morbidity and Mortality Profiles



LIVE WELL  
SAN DIEGO



The **Community Morbidity and Mortality Profiles** include the latest mortality and morbidity data as dashboards and excel workbooks.



- Data by the lenses of health equity: age, sex, geography, socioeconomic status, and race/ethnicity for over 70 conditions.
- Two separate dashboards and files:
  - mortality (death), and
  - morbidity (hospitalization, emergency department discharge, and in-patient discharges).
- Geographies available:
  - Health and Human Services Agency (HHSAs) Regions and their respective subregional areas (SRAs)
  - 18 municipalities and the unincorporated area of San Diego County.

## Community Morbidity and Mortality Profiles (by Region or Municipality)

# AAP Prevention of Drowning Statement and Report

**Drowning remains the leading cause of death among 1- to 4-year-olds in the US**

Multi-layered approach to prevention is necessary:

1. Influence policy and legislation
2. Change organizational practices
3. Fostering coalitions and networks
4. Educating providers
5. Promoting community education
6. Strengthening individual knowledge and skills



# What is the Epinephrine Standing Order?

- Authorizes schools to obtain, possess, and administer access to epinephrine for schools, allowing them to meet education code requirements.
- Eliminates the school's need to obtain a local physician's prescription.
- Standing orders are authorized per calendar year.

## Who can apply?

- Local education agencies, county offices of education, individual schools (including public, private, and charter).
- Childcare programs licensed by or in contract with LEAs beginning in May 2026.

# What's Changing and What's the Same?

What's changing?	Existing Standing Order	May 19 Updates
Who is eligible?	TK-12 schools, LEAs, COEs	TK-12 schools, LEAs, COEs, and <i>LEA-affiliated childcare programs</i>
What devices are authorized?	Auto-injectors (junior and regular)	Auto-injectors (junior and regular) and <i>Nasal sprays (1mg and 2mg)</i>

What's the same?	Existing Standing Order	May 19 Updates
Refills authorized?	<input checked="" type="checkbox"/>	<input checked="" type="checkbox"/>
Apply and renew each calendar year?	<input checked="" type="checkbox"/>	<input checked="" type="checkbox"/>
Submit usage report when applying for annual renewal?	<input checked="" type="checkbox"/>	<input checked="" type="checkbox"/>

[standingorders.cdph.ca.gov](http://standingorders.cdph.ca.gov)

# World Cup Preparedness

- Public health preparedness
- Enhanced surveillance
- Coordination and communication with external entities



# Tijuana River Valley Sewage Crisis Updates



## County, UC San Diego Begin New Research on Tijuana River Valley Pollution Impacts



By [Fernanda Lopez Halvorson](#), County of San Diego Communications Office

May 29, 2026 | 9:46 AM

- After a competitive process, UCSD was awarded to conduct an Exposure Characterization Study
- This study is part of the County's Tijuana River Valley Chemical Pollution Impact Investigation
- The project will integrate existing and ongoing measurements of airborne chemicals, develop a hydrogen sulfide monitoring framework and web-based distribution map. This will equip the County with the scientific foundation needed to support future health studies, and with actionable information it can put to use immediately for community planning, communication and public health decision-making.

[County, UC San Diego Begin New Research on Tijuana River Valley Pollution Impacts | News | San Diego County News Center](#)

## Survey Opens to Measure Economic Impact of Tijuana River Valley Pollution



By [Fernanda Lopez Halvorson](#), County of San Diego Communications Office  
May 28, 2026 | 11:14 AM

- *The community impact survey takes between 5 to 20 minutes to complete.*
- *Versions vary for residents, business owners, visitors or community organizations.*
- *Surveys will remain open for four weeks, and findings will be published fall 2026.*

People who work, live, visit, own businesses or are part of community organizations near the Tijuana River Valley are invited to take a survey measuring the economic impacts of the ongoing sewage pollution.

The findings will help guide future funding and long-term solutions.

### Why Your Input Matters

- Qualitative data alone cannot capture the full human and community impact of this crisis.
- The study combines data with real-world experiences, making community participation essential.
- The study includes several research components:
  - Literature and data reviews
  - Interviews and surveys capturing local insights and lived experience
  - Economic models to calculate losses



# Resources for Health Care Professionals

*Page originally published 5/21/2026.*

Health care professionals who work with patients impacted by the Tijuana River Valley can refer to resources to address health concerns.

On this page:

- [Recommendations](#)
- [Resources](#)

[Resources for Health Care Professionals](#)

[TJRV Healthcare Professional Training](#)



LIVE WELL  
SAN DIEGO

# Tijuana River Sewage Crisis Economic Impact Study

You should take a survey if you are someone who:



Owns, operates, or manages a business in the affected area

**Goal of this survey:** to understand how the pollution crisis is affecting business operations, demand, and revenue.

Business Survey

<https://www.surveymonkey.com/r/MR35RPS>



Lives, works, or regularly spends time in the affected area

**Goal of this survey:** to understand how the pollution crisis is affecting daily life, recreation, and household choices for people that live, work, or regularly spend time in the area.

Resident Survey

<https://www.surveymonkey.com/r/FW3ZJSK>



Recently visited the affected area

**Goal of this survey:** to understand how the pollution crisis is affecting visitor experiences and travel choices for people visiting from outside the area.

Visitor Survey

<https://www.surveymonkey.com/r/NZFRGCB>



Works for an organization that represents the community or businesses in the affected area

**Goal of this survey:** to understand similar details captured in the other surveys, but as observed by organizations that represent the community or businesses in the area.

Organization Survey

<https://www.surveymonkey.com/r/FSVKVHG>

# INTERNATIONAL OVERDOSE AWARENESS DAY

**SUNDAY, AUGUST 23**

**12:00 PM – 4:00 PM**

**1919 APPLE STREET OCEANSIDE, CA**

## **Everyone is welcome.**

Together we can reduce stigma,  
support one another, and save lives.

[matprogram@northcountycenter.org](mailto:matprogram@northcountycenter.org)

## **WHAT TO EXPECT**

Free Narcan training and distribution

Fentanyl test strips and overdose prevention supplies

Community resources and support services

Space to honor and remember loved ones



# Benadryl Overdoses

Rady Children's is warning of diphenhydramine overdoses due to the re-emergence of the "Benadryl Challenge"

- Five teenagers have been to the ED recently.
  - TikTok / social media promotion encourages taking up to 12 tablets at a time to induce hallucinations.
  - Tablets range from 25-50mg each.
  - Max dose for adults is 300mg in 24 hours.
- FDA issued a warning in 2020 as Benadryl overdose can lead to seizures, cardiac arrest, and even death.
- In 2020 there were deaths in OK and OH of a 15 yo girl and 13 yo boy. Another died recently in TX.





# Public Health Director Update

Tina Emmerick, M.P.H.  
Interim Assistant Public Health Director  
Public Health Services



# Public Health Services



## BOARD LETTER FORECAST

Board Meeting Date	Subject
<b>August 18, 2026</b>	Authorize acceptance of funding from California Department of Public Health for the Maternal, Child, and Adolescent Health Program and the California Home Visiting Program Innovation 3.0 Funding Award
<b>August 18, 2026</b>	Authorize acceptance of funding from California Department of Public Health for the Black Infant Health Program and the Perinatal Equity Initiative
<b>August 18, 2026</b>	Authorize acceptance of funding from the CDC for Strengthening US Public Health Infrastructure and Workforce via the Public Health Infrastructure Grant
<b>September 15, 2026</b>	Authorize Certification Statements for California Children’s Services Programs

# County Budget: Key Dates

## Date

## Activity

**June 1, 2026**

12:00 PM-Public Budget Hearing on CAO Recommended Budget at CAC: The public can provide comments during a public BOS meeting.

**June 11, 2026**

5:00 PM-Last day for written testimony on budget to Clerk of the Board (COB): Including change letter, budget board letter, resolution(s) to adopt budget, and any referrals to budget filed with the COB. Budget hearings formally end. Online comments close.

**June 12, 2026**

Revised Recommended budget available online

**June 25, 2026**

9:00 AM-Budget Deliberations and Adoption of CAO Recommended Budget at CAC: The BOS adopts a budget for Fiscal Year (FY) 2026-27 and tentatively approves a budget for FY 2027-28.

### Your Input is Critical

The budget shapes priorities that affect your community. Public input matters — your feedback helps guide decisions for Fiscal Year 2026–27 and beyond. Discover how the process works and share your ideas to make an impact at:

[County Budget 2026 - 28 | Engage San Diego County](#)

### How to Get Involved

- Review the information on the [County Budget 2026-28](#) page and visit [San Diego County Open Budget](#)
- Share the information with others
- Provide input through tools on the [County Budget](#) page
- Join a community session
- Ask questions

# CA Governor's May Revision



**Proposed Budget Released  
Friday, January 9**

**Released  
Thursday, May 14**

**Expected Signing  
Monday, June 15**

## Governor's Proposed Budget

( January )

The Budget proposed by the Governor

[Summary »](#)

[Detail »](#)

## May Revision

( May )

Changes to the Governor's Proposed Budget based upon the latest economic forecasts

## Enacted Budget

( Summer )

The Budget passed by the Legislature and signed by the Governor

# Health Services Advisory Board Meeting



# Thank you!



*The Public Health Services department, County of San Diego Health and Human Services Agency, has maintained national public health accreditation, since May 17, 2016, and was re-accredited by the Public Health Accreditation Board on August 21, 2023.*