



INFLUENZA WATCH

Overview

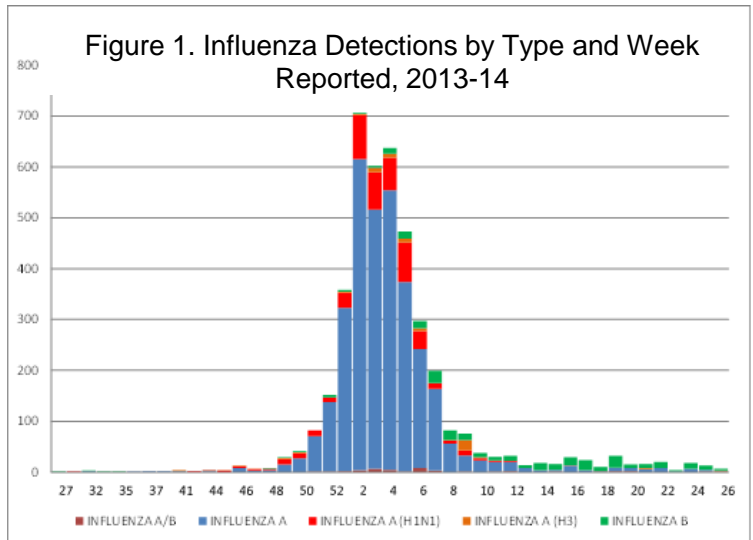
The impact of influenza was moderately severe in San Diego County during the 2013-14 season. Severe influenza infection resulted in 70 deaths (age ranged from 20 – 100 years), and over 200 patients requiring care in hospital intensive care units (ICU). Influenza A(H1N1) pandemic 2009 was the predominate virus circulating, although influenza A(H3) seasonal and influenza B viruses were also detected. Most of the influenza A type viruses detected were not subtyped.

2013-14 Season Summary

4,125
Total Cases

70
Deaths

227
ICU Cases



Virus Characteristics

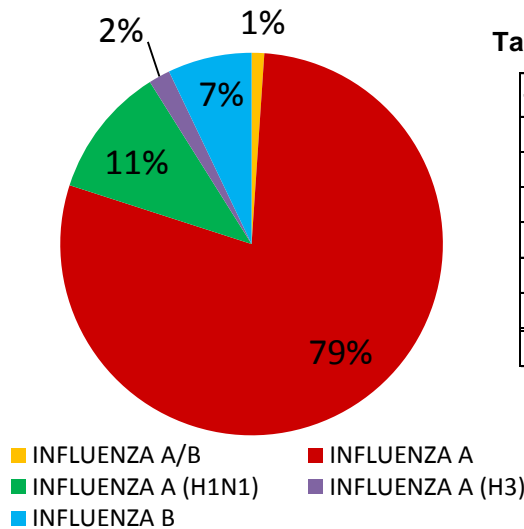


Table 1. Influenza Detections by Type, 2013-14

Type	Count
Influenza A	3255
Influenza A (H1) Seasonal	0
Influenza A (H3) Seasonal	75
Pandemic Influenza A (H1N1)-	458
Influenza B	293
Influenza A/B	44
Total	4,125

** Fiscal Year is July 1 - June 30

Influenza Watch

2013-14 Season Summary

Figure 2. Influenza Cases by Age Group and Fiscal Year

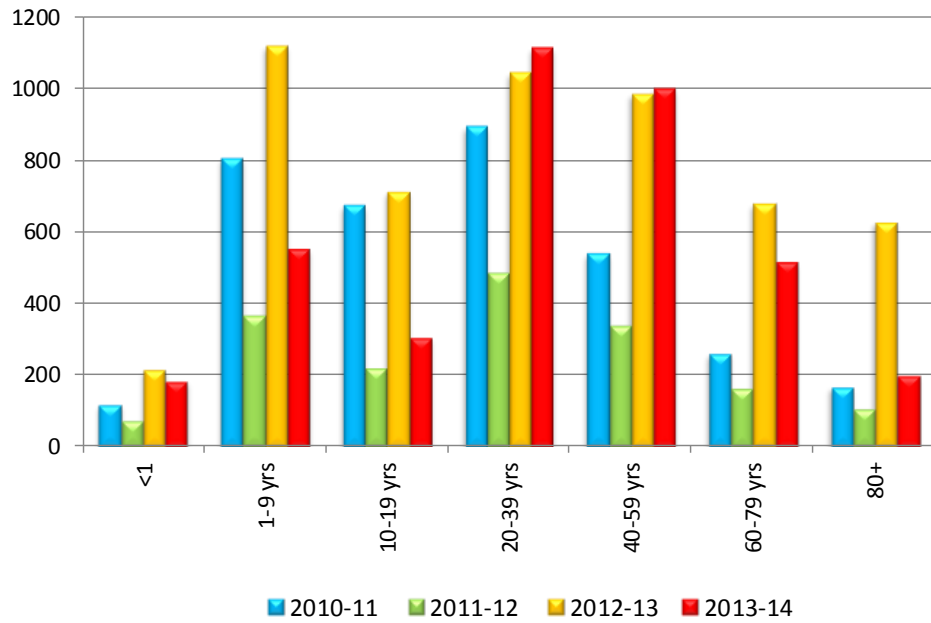
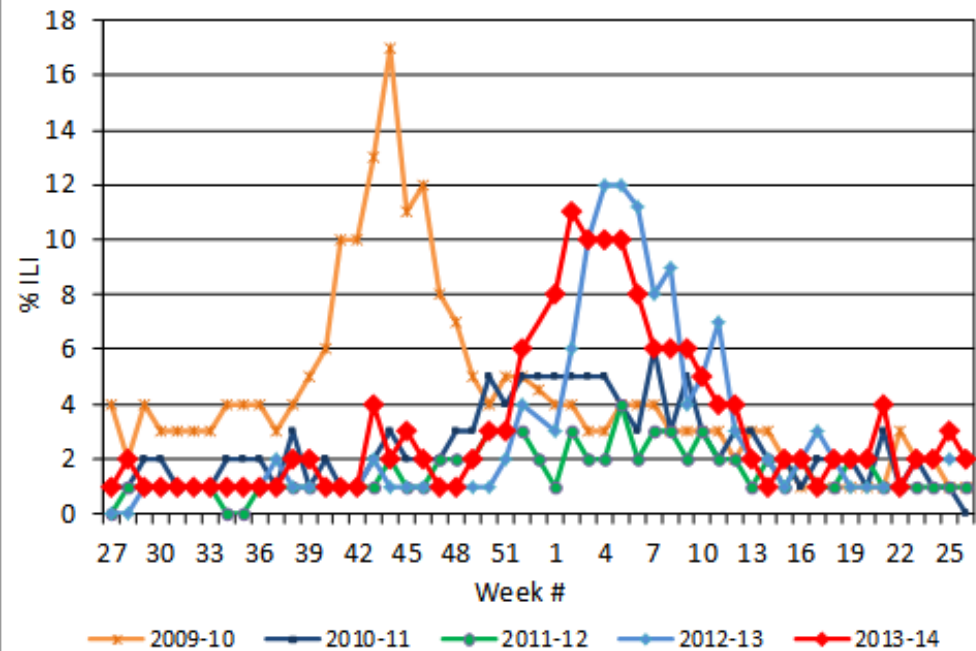


Figure 3. Percent of Emergency Department Visits for Influenza-Like-Illness by Week and Fiscal Year



Influenza Watch

2013-14 Season Summary

Figure 4. Percent of San Diego County Emergency Department Visits for Influenza-like-Illness by Week and FY Compared to 5-Year Baseline & Upper 95% Threshold Values (Serfling Method)

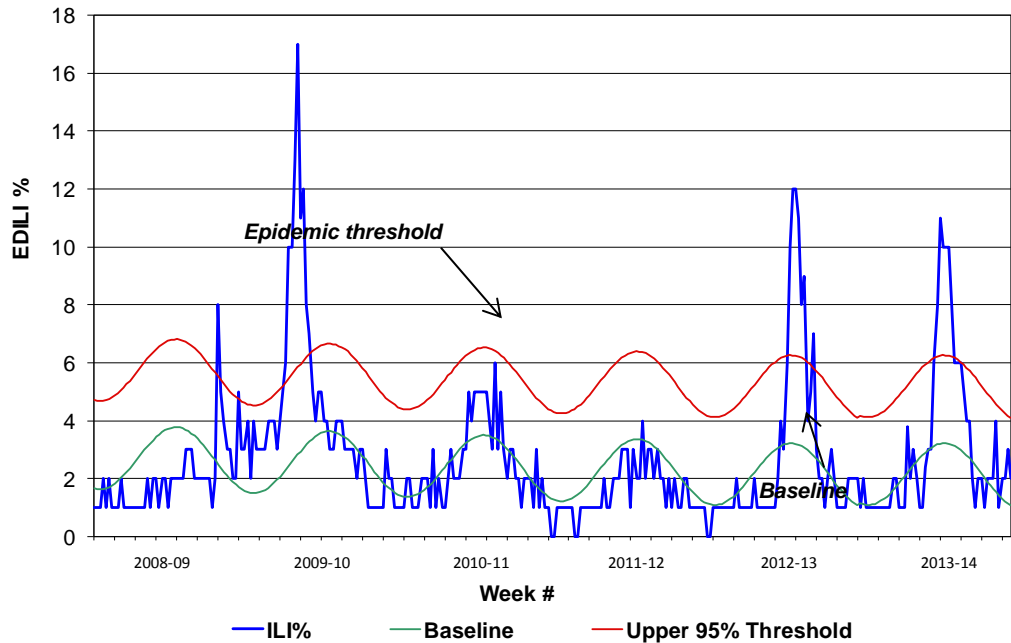
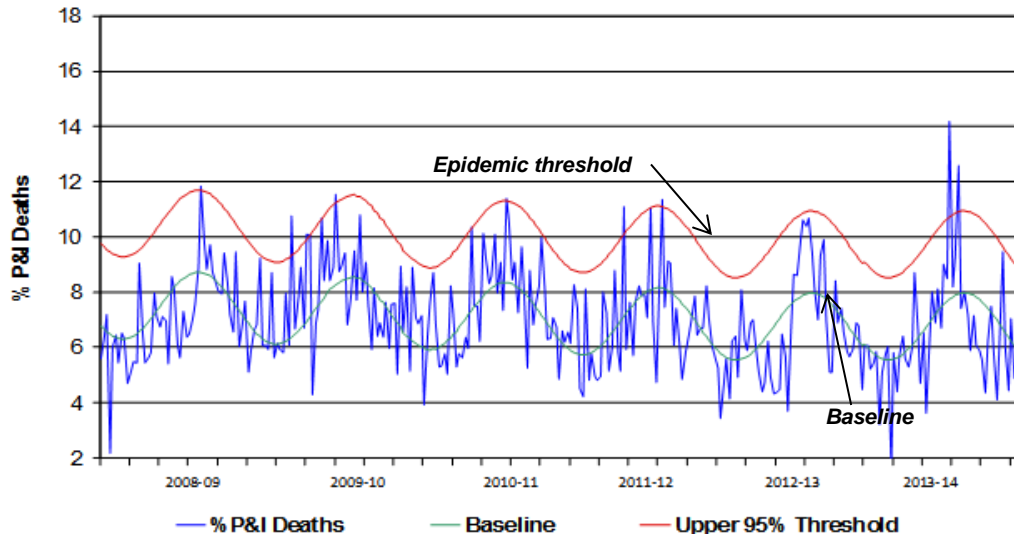


Figure 5. Percent of All San Diego County Deaths Registered with Pneumonia and/or Influenza by Week and FY Compared to Prior 5-Year Baseline & Upper 95% Threshold (Serfling Method)



Influenza Watch

2013-14 Season Summary

Figure 6. Influenza Deaths by Type of Influenza and Fiscal Year

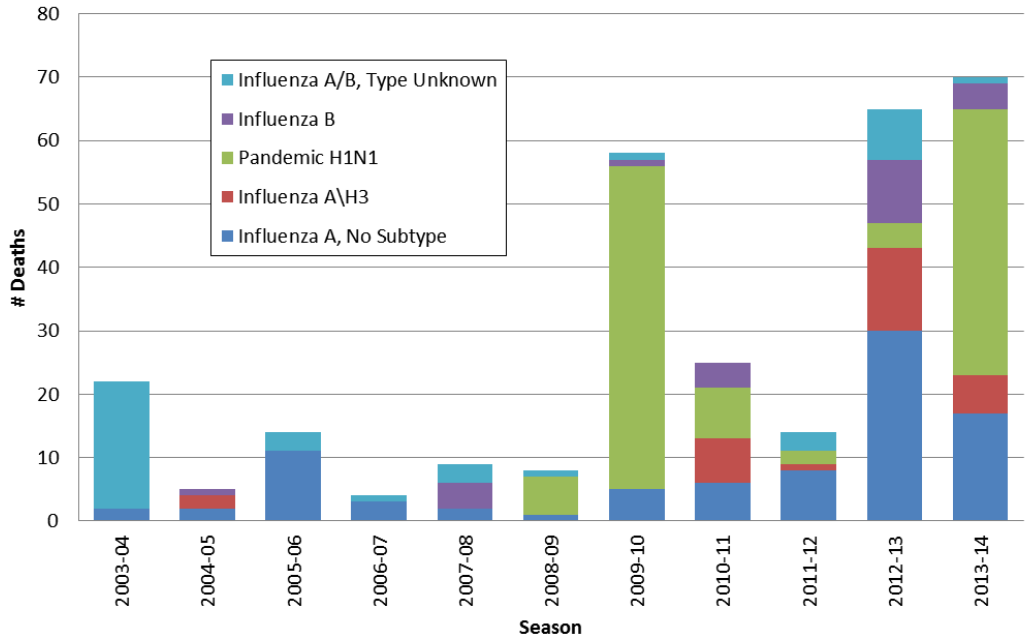


Figure 7. Influenza Deaths by Age Group and Fiscal Year

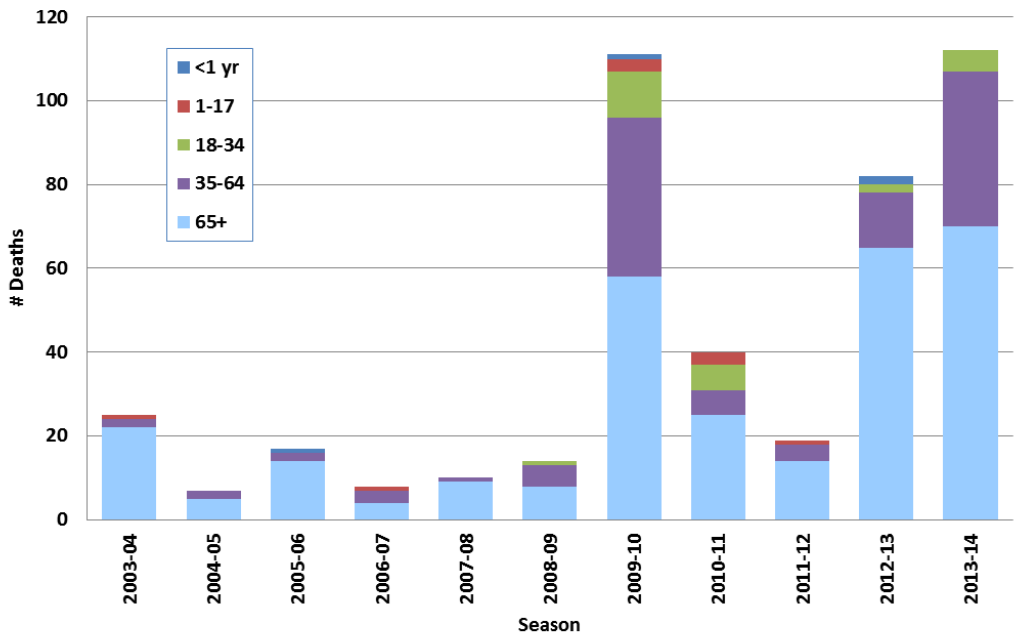


Table 2. Influenza Deaths by Age Group and Fiscal Year

Age	<1 yr	1-17	18-34	35-64	65+	Total
2003-04	0	1	0	2	19	22
2004-05	0	0	0	2	3	5
2005-06	1	0	0	2	11	14
2006-07	0	1	0	3	0	4
2007-08	0	0	0	1	8	9
2008-09	0	0	1	5	2	8
2009-10	1	3	11	38	5	58
2010-11	0	2	6	6	10	24
2011-12	0	1	0	4	9	14
2012-13	2	0	2	13	48	65
2013-14	0	0	5	37	28	70

Table 3. Influenza Deaths by Type and Fiscal Year

Type	Influenza A, No Subtype	Influenza A\H3	Pandemic H1N1	Influenza B	Influenza A/B, Type Unknown	Total
2003-04	2	0	0	0	20	22
2004-05	2	2	0	1	0	5
2005-06	11	0	0	0	3	14
2006-07	3	0	0	0	1	4
2007-08	2	0	0	4	3	9
2008-09	1	0	6	0	1	8
2009-10	5	0	51	1	1	58
2010-11	6	6	8	4	0	24
2011-12	8	1	2	0	3	14
2012-13	30	13	4	10	8	65
2013-14*	17	6	42	4	1	70

*One 2013-14 H1N1 death was also co-infected with influenza A/H3.

Table 4. Characteristics of Influenza Deaths, 2013-14

2013-2014 Death Case Characteristics	Yes	No	Unknown	Pending	Total
Lab confirmed	68	2	0	0	70
Influenza listed on death certificate	46	24	0	0	70
Vaccination Status	7	19	44	0	70
Underlying health conditions	62	6	2	0	70

Table 5. Demographics of Influenza Deaths, 2013-14

Age Group	Age		Gender		Race / Ethnicity			
	N	Percent of Total	Male	Female	Hispanic	White	Black	Other/Unknown
Under 1	0	0.0	0	0	0	0	0	0
1-17	0	0.0	0	0	0	0	0	0
18-34	5	7.1	1	4	3	2	0	0
35-64	37	52.9	24	13	9	21	2	5
65+	28	40.0	12	16	6	17	0	5
Unknown	0	0.0	0	0	0	0	0	0
Total	70	100.0	37	33	18	40	2	10

Influenza Reporting Local providers are encouraged to report any laboratory positive influenza detections to the County’s Epidemiology Program by **FAX to (858) 715-6458**. Please fax a [Case Report Form](#) and/or a printed laboratory result. If known, please indicate if patient was admitted to ICU or died. For questions regarding sending specimens to Public Health Laboratory (PHL), call (619) 692-8500. Click here for the updated PHL [PCR Test Request Form](#). Contact Epidemiology with any questions at **(619) 692-8499** or EpiDiv.HHSA@sdcounty.ca.gov.

Immunization Resources County of San Diego Immunization Branch www.sdiz.org