



INFLUENZA WATCH

2016-17 Season Summary

The purpose of the weekly *Influenza Watch* is to summarize current influenza surveillance in San Diego County. This summary report reflects the 2016-17 season data.

Report Contents

- Page 1: Overview & Indicators
- Page 2: Virus Characteristics
- Pages 3-7: Trend graphs
- Page 7: Reporting Information

2016-17

Highlights

- High volume of influenza detections reported
- Predominantly an Influenza A season
- Influenza A/H3 was the main influenza A subtype circulating
- High number of influenza-related deaths, including 2 pediatric deaths
- Majority of deaths were 65 years of age or older, with underlying conditions

Season Summary

6,810

Total Cases

108

ICU Cases

87

Deaths

35

Outbreaks

Virus Characteristics

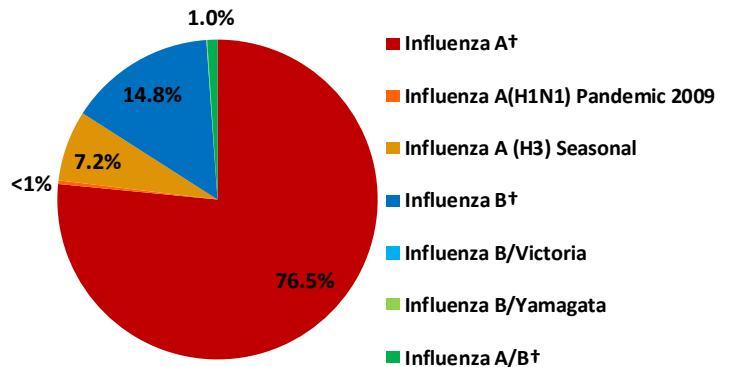


Table 1. Influenza Surveillance Indicators

Surveillance Indicator	FY 2016-17	FY 2015-16	Prior 3-FY Average*
Influenza detections reported (all types)*	6,810	6,279	5,933
Number of influenza-related deaths reported	87	68	78
Number of severe influenza (death and/or ICU) cases	165	153	135
Number of confirmed influenza outbreaks	35	15	43

FY=Fiscal year is July 1-June 30

* Includes FYs 2015-16, 2014-15, and 2013-14.

Influenza Watch

2016-17 Season Summary

Figure 1. Influenza-Related Deaths by Age Group and Type of Influenza, 2016-17 (N=87)

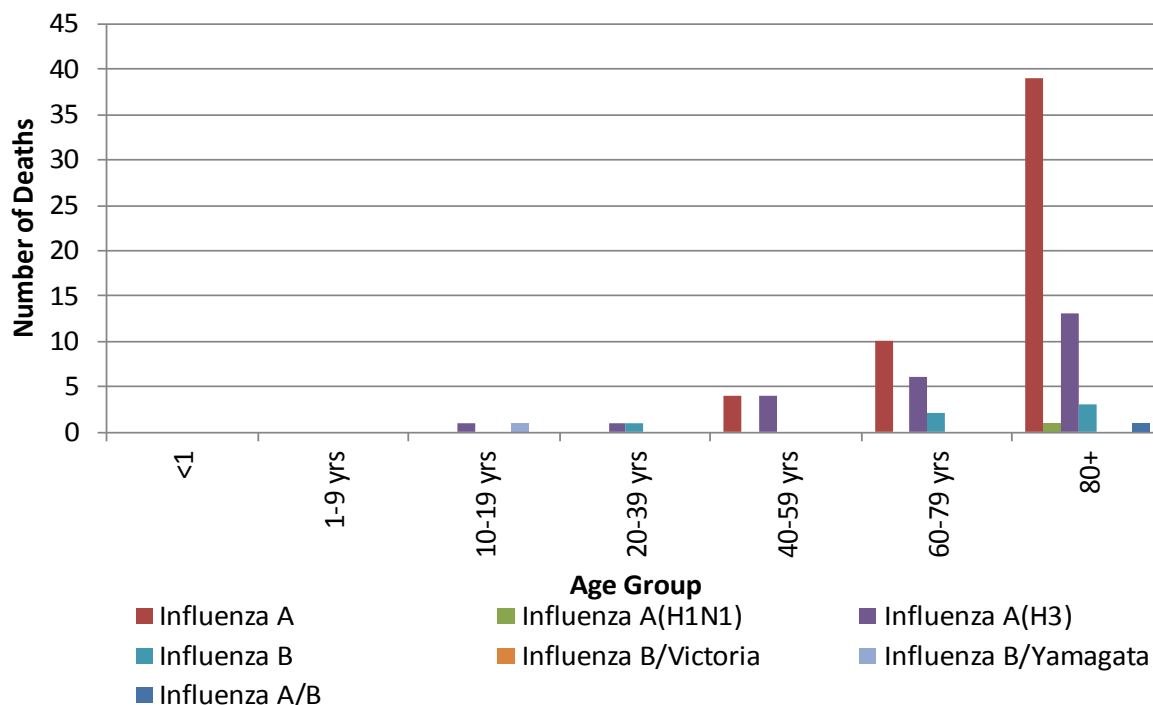


Table 2. Influenza Detections Reported, FY 2016-17*

Positive Test Type/Subtype	Total	Percent
Influenza A†	5,213	81.8%
Influenza A(H1N1) Pandemic 2009	25	0.2%
Influenza A (H3) Seasonal	487	2.0%
Influenza B†	1,009	14.8%
Influenza B/Victoria	1	0.0%
Influenza B/Yamagata	5	0.1%
Influenza A/B†	70	1.0%
Total	6,810	100%

* FY is July 1- June 30.

† No further characterization performed, or results were not yet available at time of publication.

Note: Totals may change due to further laboratory findings.

Influenza Watch

2016-17 Season Summary

Figure 2. San Diego County Influenza Detections by Type and Episode Week*, 2016-17 (N=6,810)
* Episode week is week of Onset, or next closest date available.

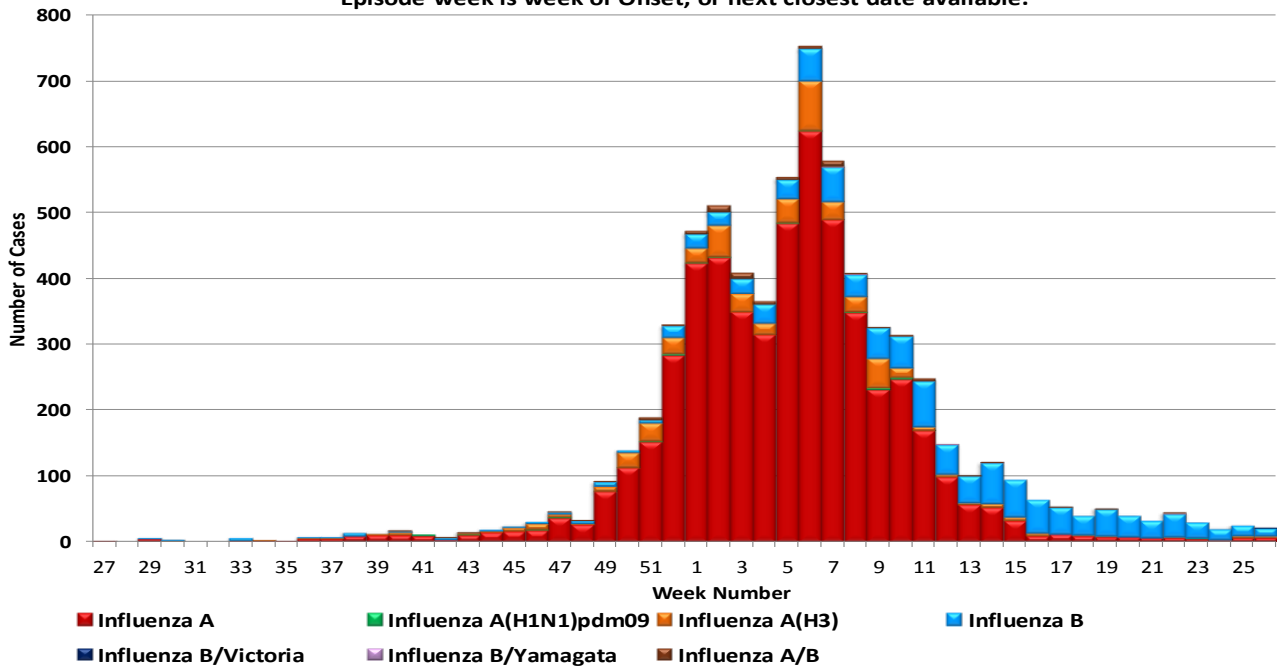
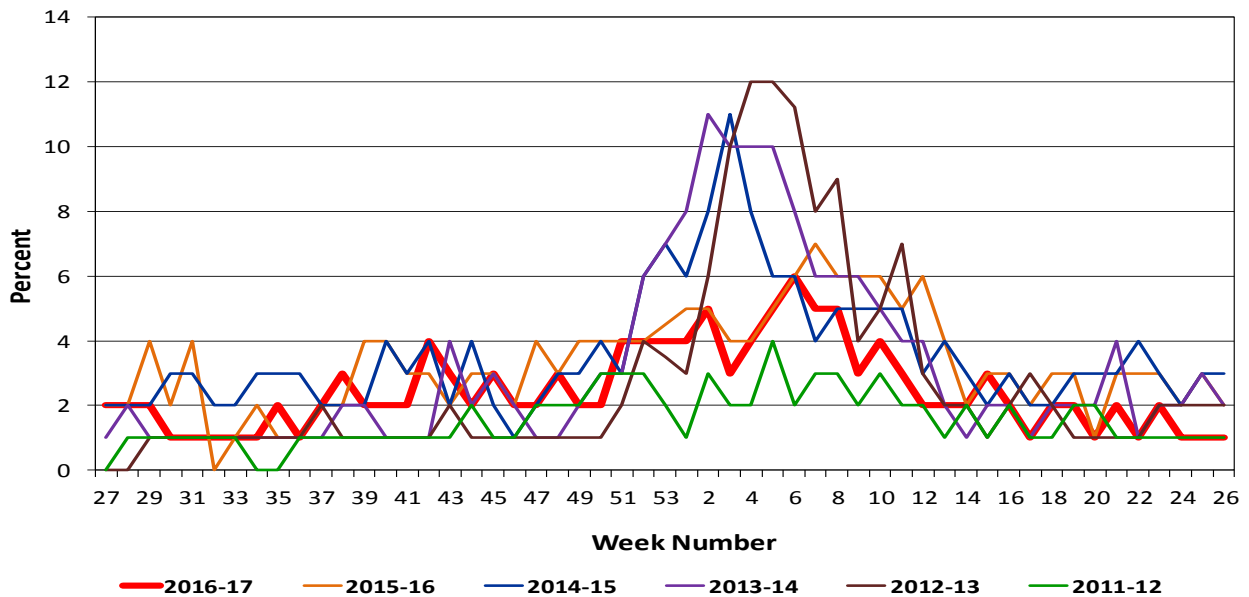


Figure 3. Percent of Emergency Department Visits for Influenza-like Illness by Week and FY



Influenza Watch

2016-17 Season Summary

Figure 4. Percent of Reported Influenza Cases by Age Group and Season, 2011-12 to 2016-17

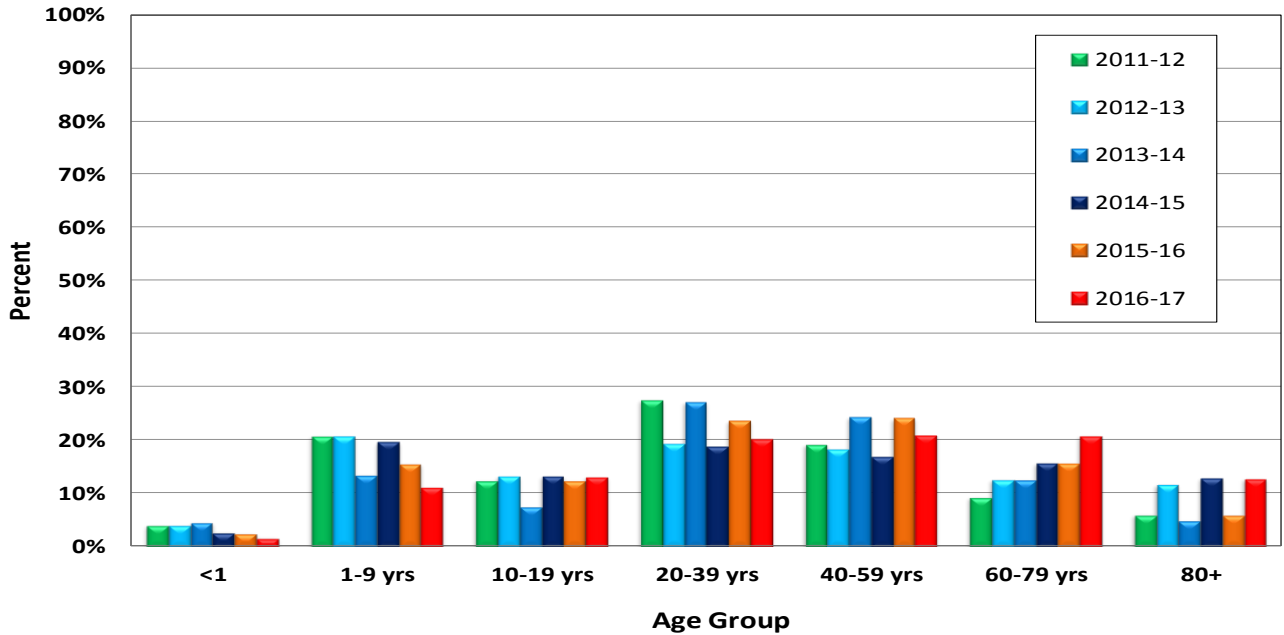
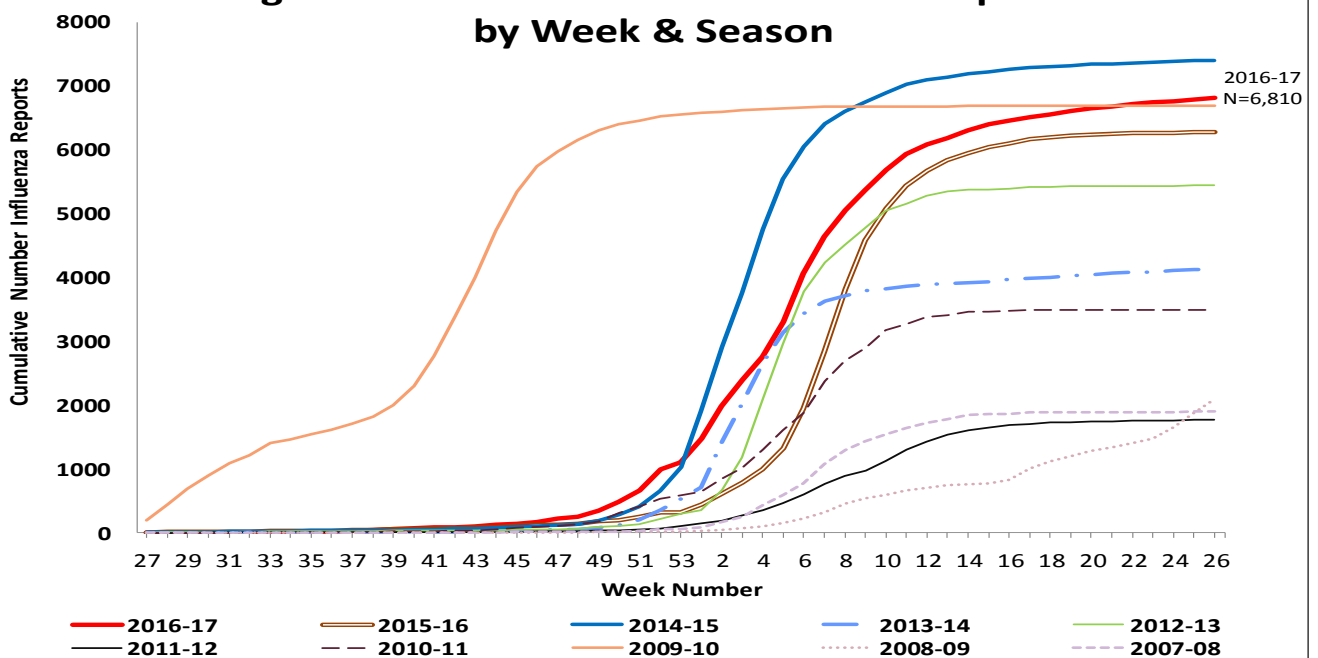


Figure 5. Cumulative Influenza Case Reports by Week & Season



Influenza Watch

2016-17 Season Summary

Figure 6. Percent of San Diego County Emergency Department Visits for Influenza-like Illness by Week and FY Compared to 5-Year Baseline & Upper 95% Threshold Values (Serfling Method)

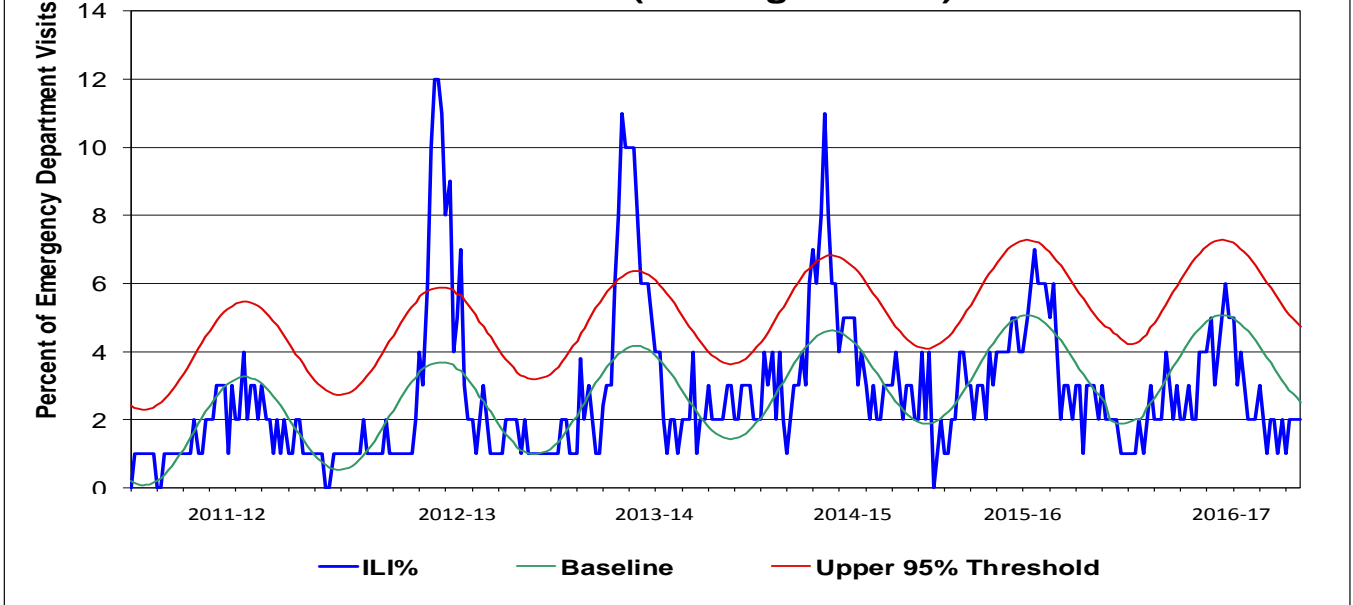
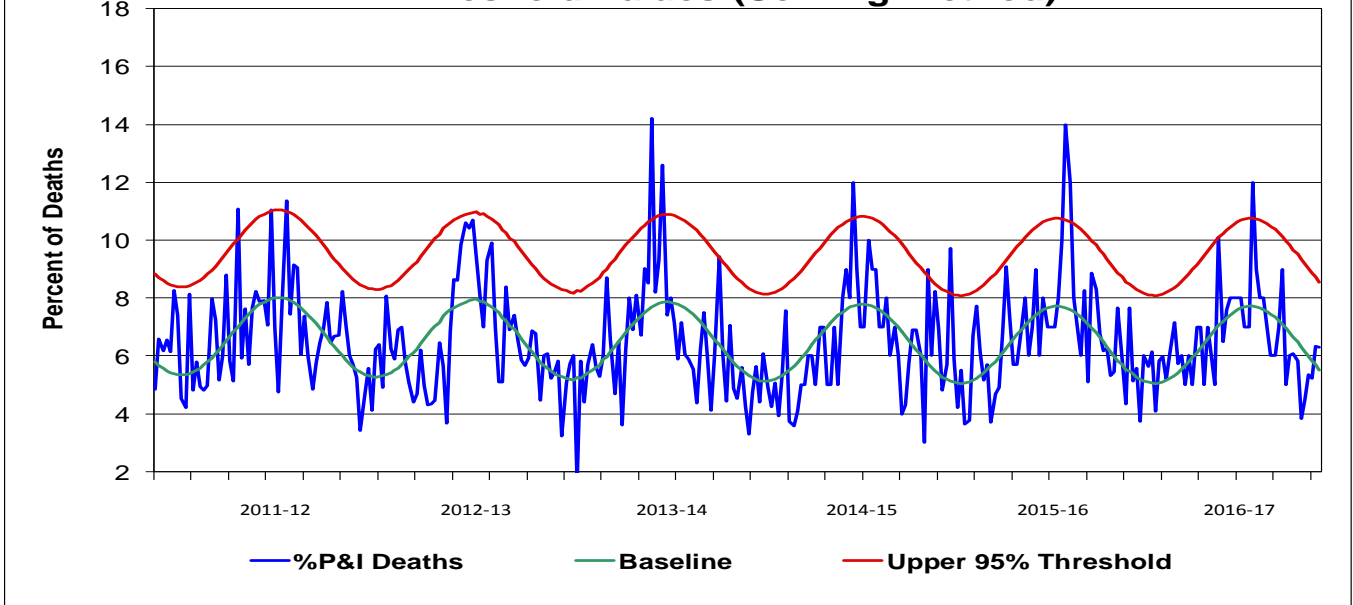


Figure 7. Percent of San Diego County Deaths Registered with Pneumonia and/or Influenza by Week and FY Compared to Prior 5-Year Baseline & Upper 95% Threshold Values (Serfling Method)



Influenza Watch

2016-17 Season Summary

Figure 8. Influenza Deaths by Type, and Season

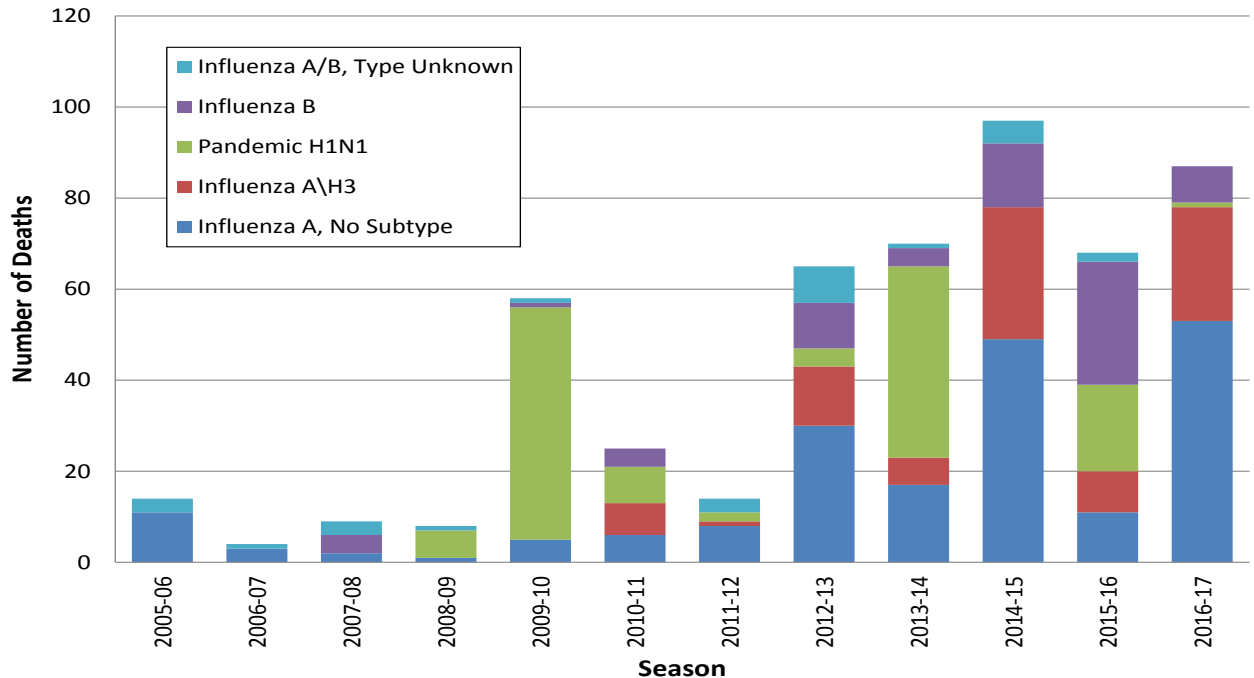
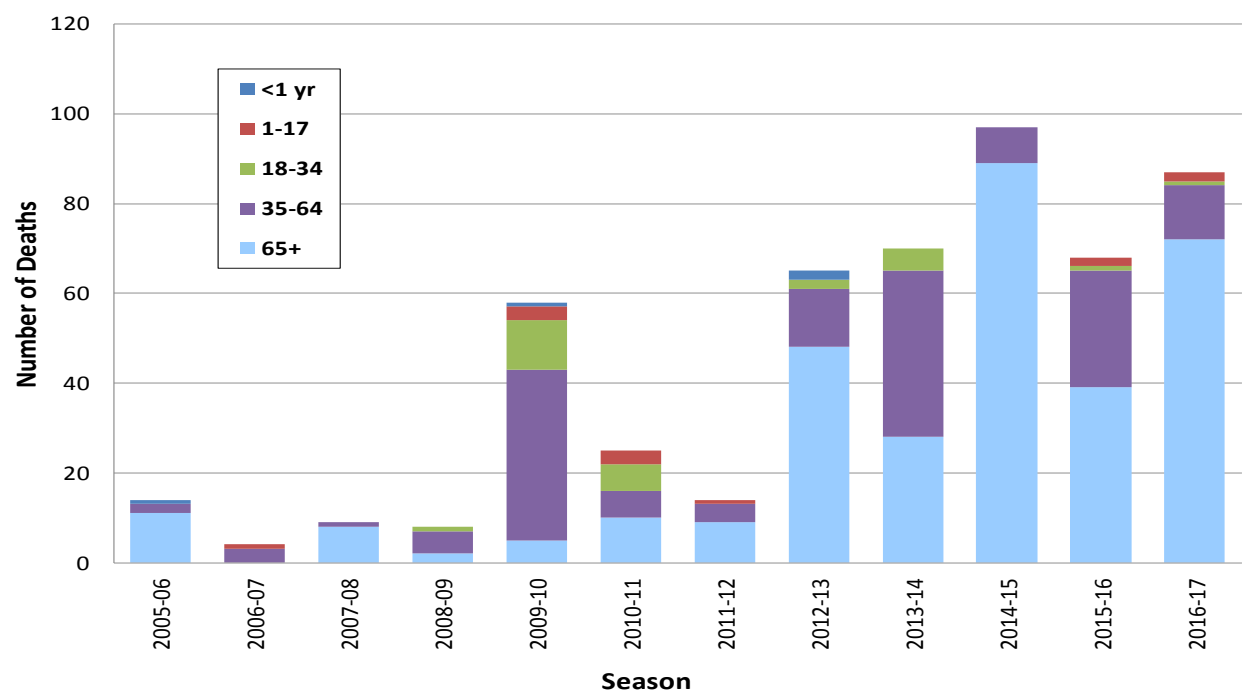


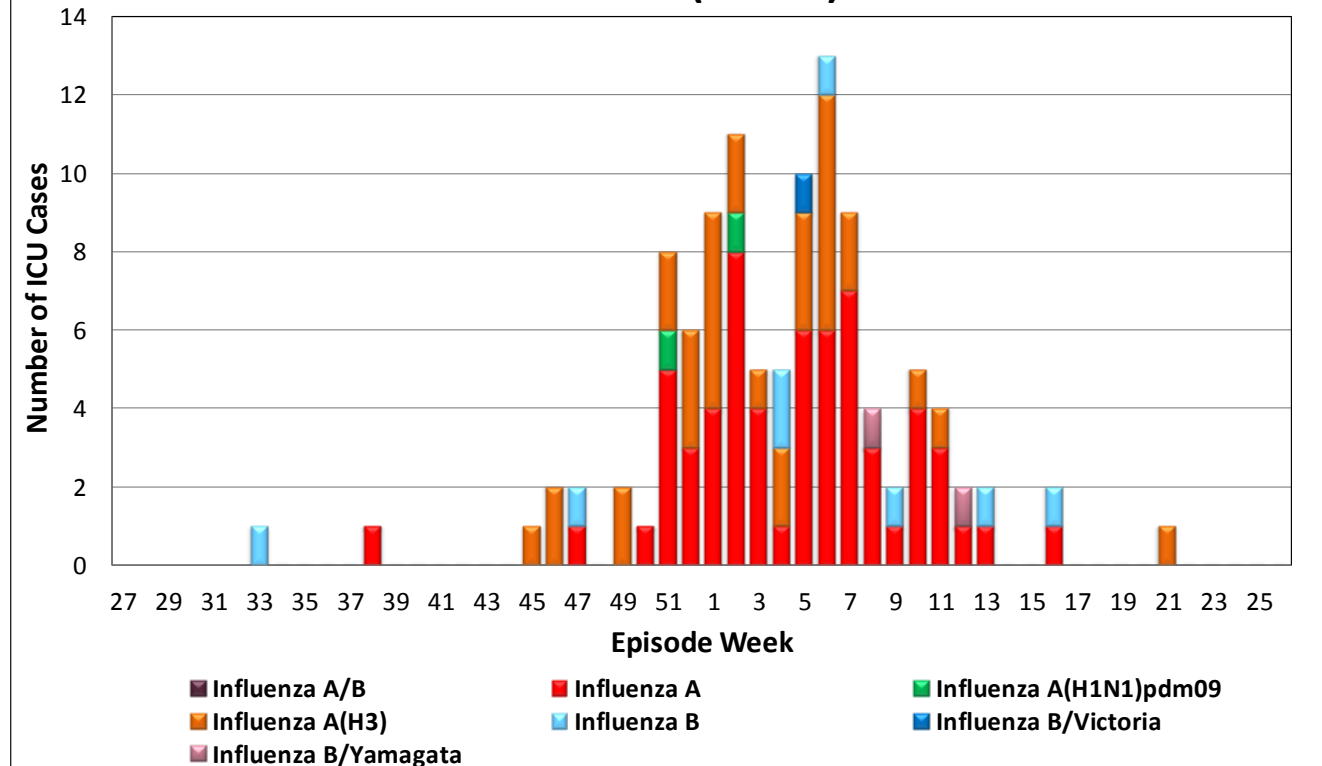
Figure 9. Influenza Deaths by Age and Season



Influenza Watch

2016-17 Season Summary

Figure 10. Number of Influenza Cases Requiring ICU Care by Episode Week and Type of Influenza, 2016-17 (N=108)



Influenza Reporting Local providers are encouraged to report any laboratory positive influenza detections to the County Epidemiology Program by **FAX to (858) 715-6458**. Please fax a [Case Report](#) Form and/or a printed laboratory result. If known, please indicate if patient was admitted to ICU or died. For questions regarding sending specimens to Public Health Laboratory (PHL), call (619) 692-8500. Click here for the updated PHL [PCR Test Request Form](#). Contact Epidemiology with any questions at **(619) 692-8499** or EpiDiv.HHSA@sdcounty.ca.gov.

Immunization Resources County of San Diego Immunization Branch www.sdiz.org