



# SAN DIEGO COUNTY INFLUENZA SURVEILLANCE

---

2016-17  
SEASON SUMMARY

UPDATED 8/25/17



# Season Summary



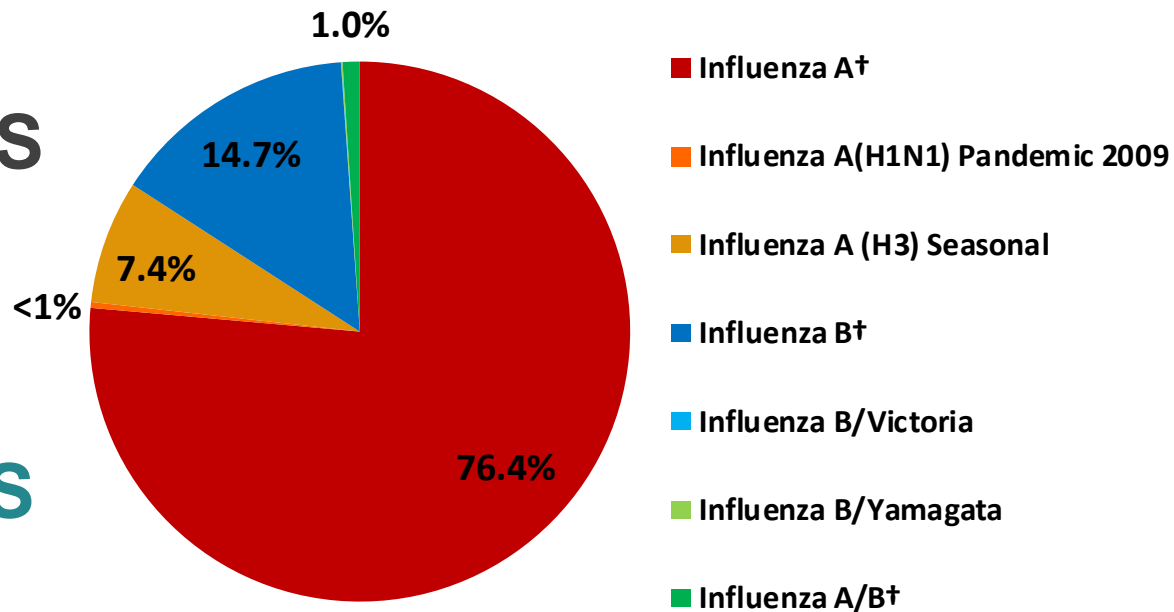
Influenza Cases Reported July 1, 2016 – June 30, 2017

**6,810** TOTAL REPORTED INFLUENZA CASES

**108** ICU CASES

**87** DEATHS

**35** OUTBREAKS



Preliminary Results

Data Source: Reported Influenza Case Reports

Prepared by County of San Diego, Health & Human Services Agency, Public Health Services, Epidemiology and Immunization Services Branch, 8/25/2017



## Table 1. Influenza Surveillance Indicators

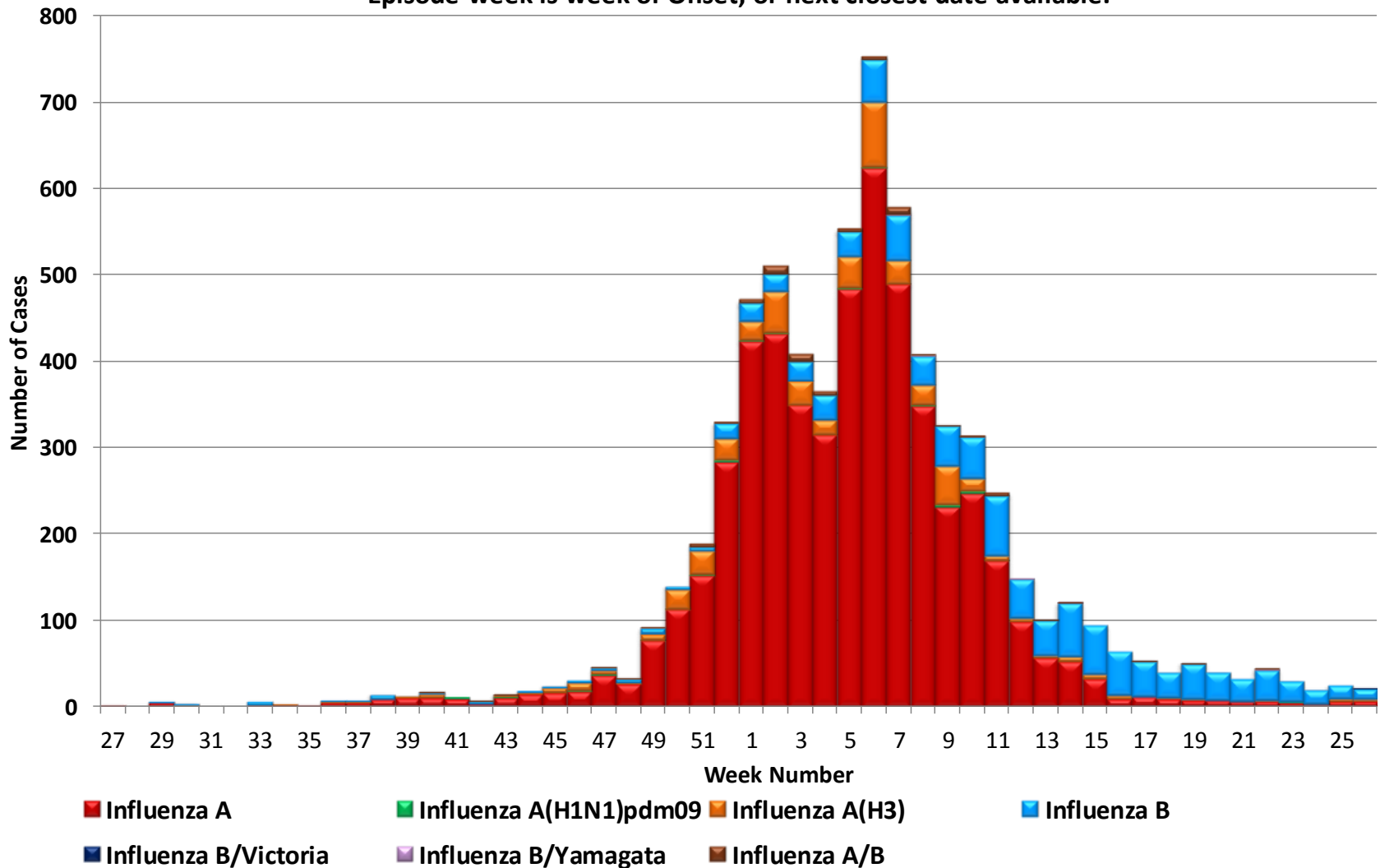
Surveillance Indicator	FY 2016-17	FY 2015-16	Prior 3-FY Average*
Influenza detections reported (all types)*	6,810	6,279	5,933
Number of influenza-related deaths reported	87	68	78
Number of severe influenza (death and/or ICU) cases	165	153	135
Number of confirmed influenza outbreaks	35	15	43

FY=Fiscal year is July 1-June 30

\* Includes FYs 2015-16, 2014-15, and 2013-14.

# Figure 2. San Diego County Influenza Detections by Type and Episode Week\*, 2016-17 (N=6,810)

\* Episode week is week of Onset, or next closest date available.



Preliminary Results

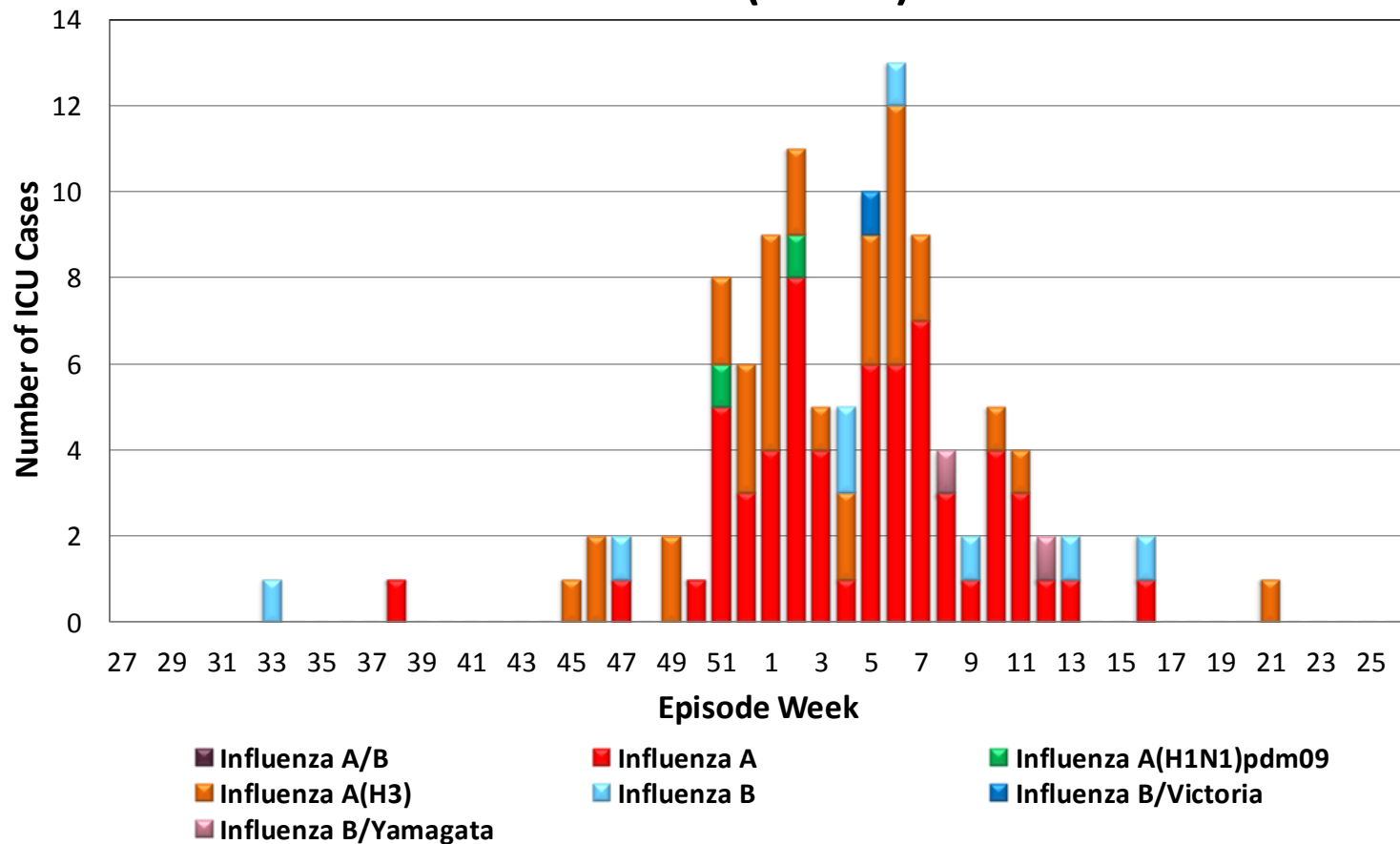
Data Source: Reported Influenza Case Reports

Prepared by County of San Diego, Health & Human Services Agency, Public Health Services, Epidemiology and Immunization Services Branch, 8/25/2017

# INFLUENZA SURVEILLANCE UPDATE, 2016-17 YTD



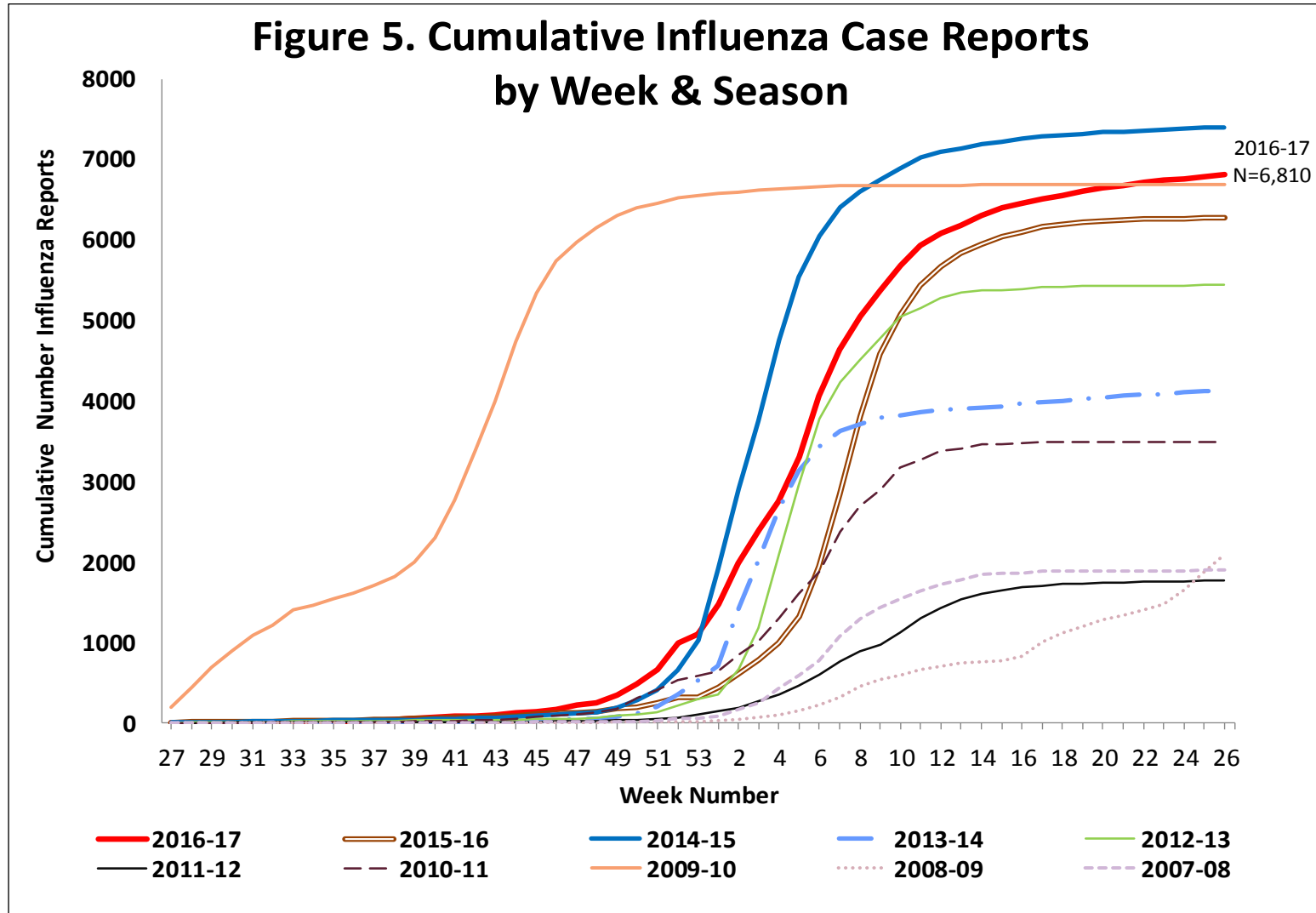
**Figure 10. Number of Influenza Cases Requiring ICU Care by Episode Week and Type of Influenza, 2016-17 (N=108)**



Preliminary Results

Data Source: Reported Influenza Case Reports

# INFLUENZA SURVEILLANCE UPDATE, 2016-17 YTD



Preliminary Results

Data Source: Reported Influenza Case Reports

# INFLUENZA SURVEILLANCE UPDATE, 2016-17 YTD



**Table 2. Influenza Detections Reported, FY 2016-17\***

<b>Positive Test Type/Subtype</b>	<b>Total</b>	<b>Percent</b>
Influenza A†	5,213	81.8%
Influenza A(H1N1) Pandemic 2009	25	0.2%
Influenza A (H3) Seasonal	487	2.0%
Influenza B†	1,009	14.8%
Influenza B/Victoria	1	0.0%
Influenza B/Yamagata	5	0.1%
Influenza A/B†	70	1.0%
<b>Total</b>	<b>6,810</b>	<b>100%</b>

\* FY is July 1 - June 30.

† No further characterization performed, or results were not yet available at time of publication.

Note: Totals may change due to further laboratory findings.

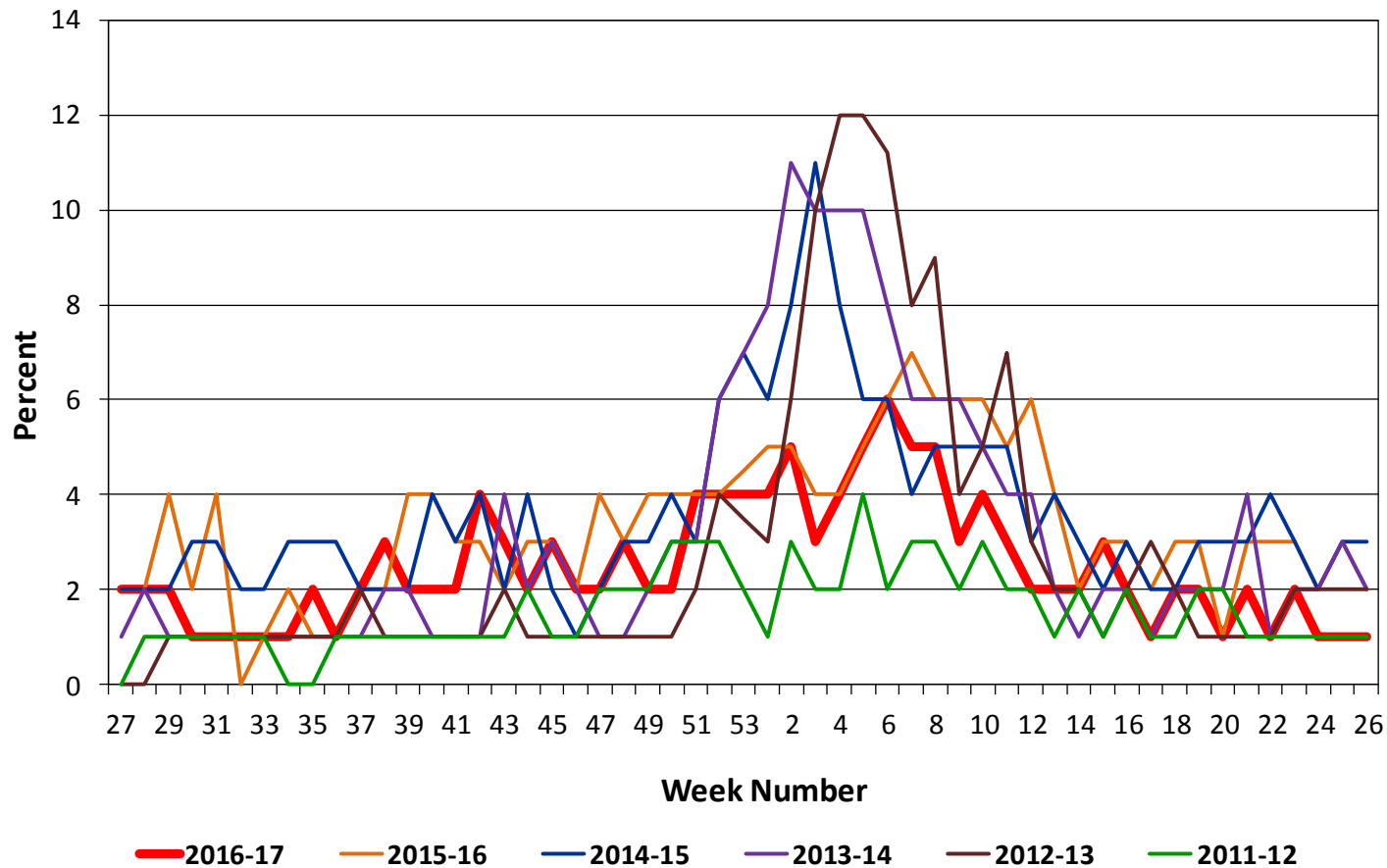
Preliminary Results

Data Source: Reported Influenza Case Reports

# INFLUENZA SURVEILLANCE UPDATE, 2016-17 YTD



### Figure 1. Percent of Emergency Department Visits for Influenza-like Illness by Week and FY



Preliminary Results

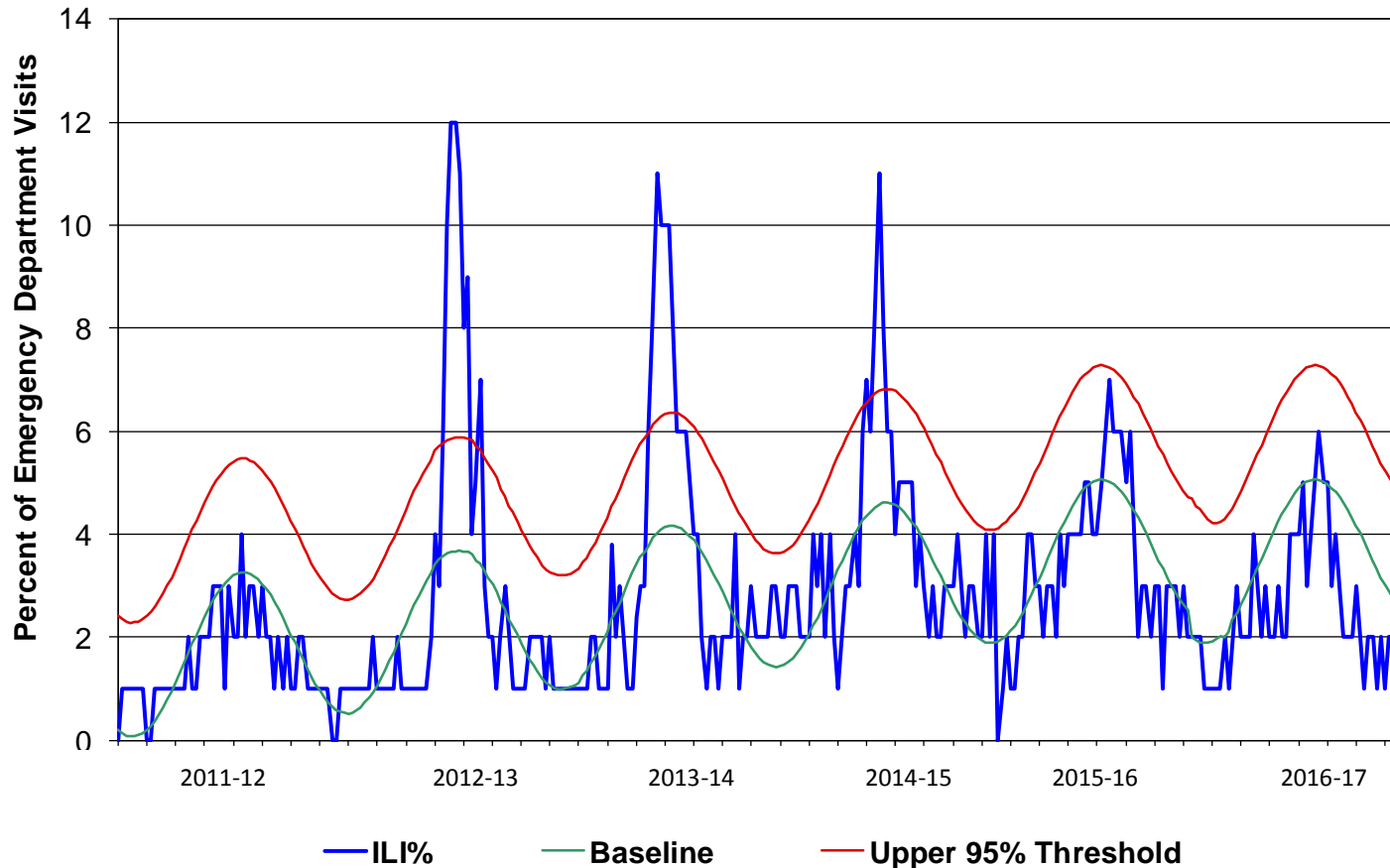
Data Source: Reported Influenza Case Reports



# INFLUENZA SURVEILLANCE UPDATE, 2016-17 YTD



**Figure 5. Percent of San Diego County Emergency Department Visits for Influenza-like Illness by Week and FY Compared to 5-Year Baseline & Upper 95% Threshold Values (Serfling Method)**



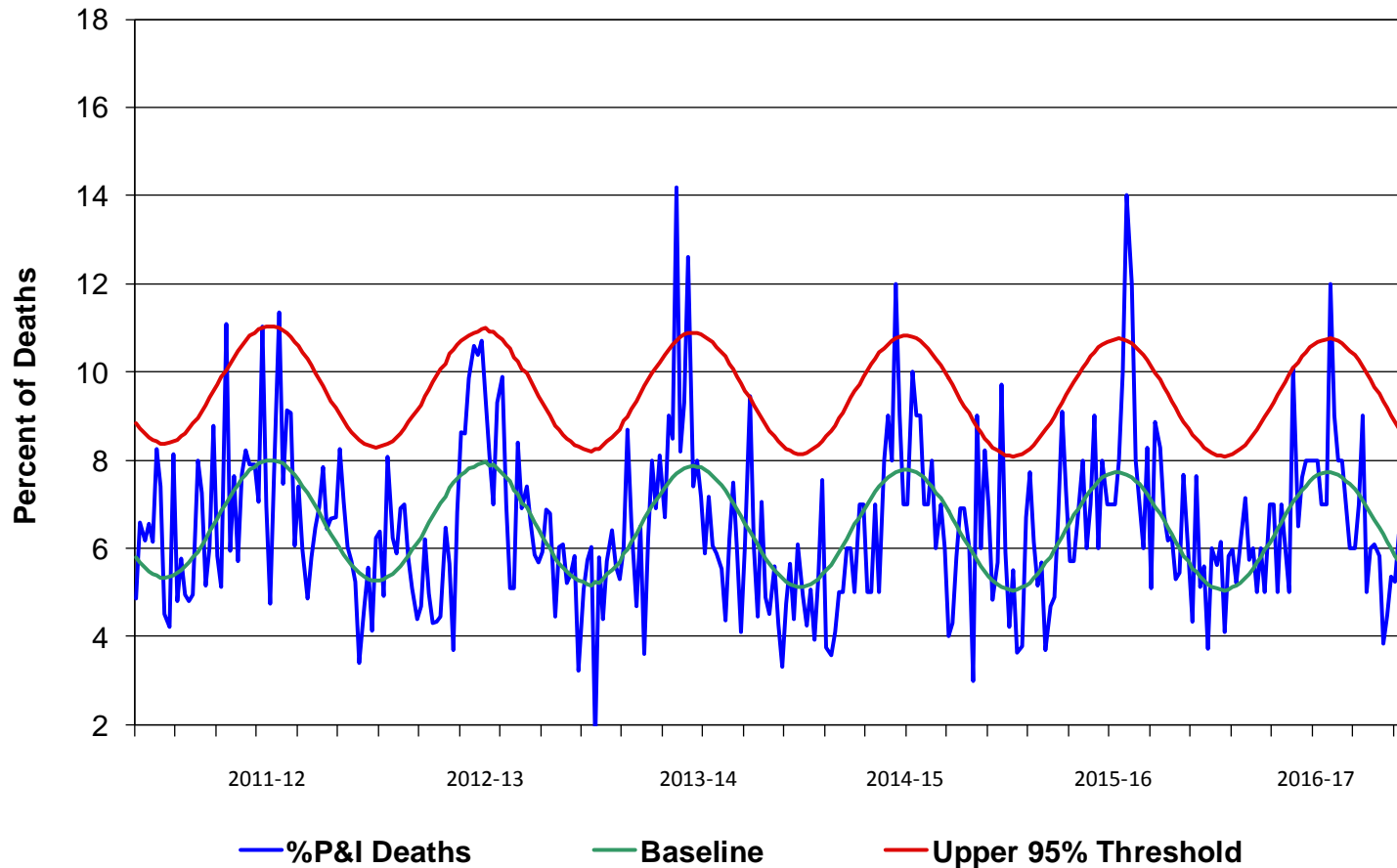
Preliminary Results

Data Source: Reported Influenza Case Reports

# INFLUENZA SURVEILLANCE UPDATE, 2016-17 YTD



**Figure 6. Percent of San Diego County Deaths Registered with Pneumonia and/or Influenza by Week and FY Compared to Prior 5-Year Baseline & Upper 95% Threshold Values (Serfling Method)**



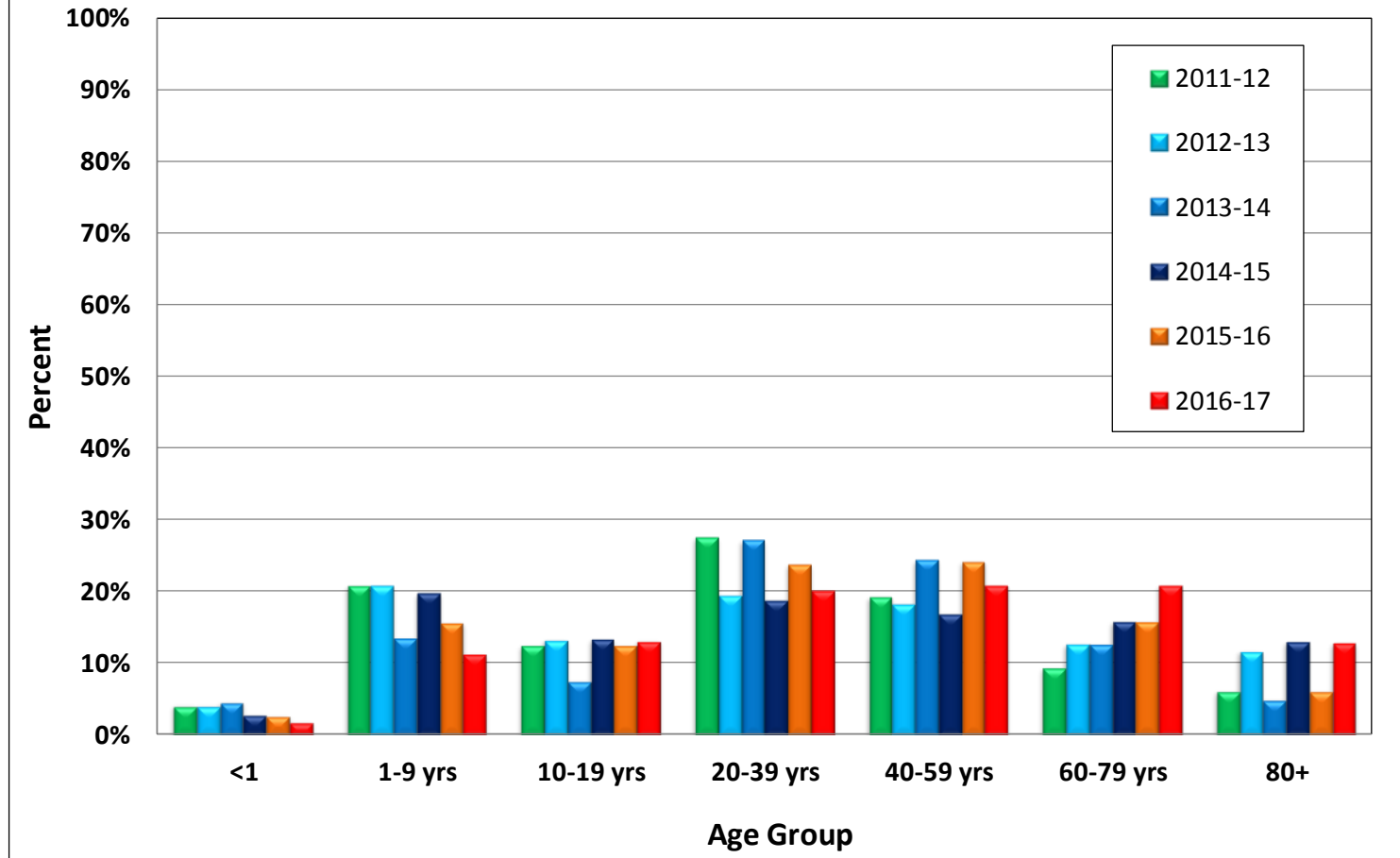
Preliminary Results

Data Source: Reported Influenza Case Reports

# INFLUENZA SURVEILLANCE UPDATE, 2016-17 YTD



**Figure 4. Percent of Reported Influenza Cases by Age Group and Season, 2011-12 to 2016-17**



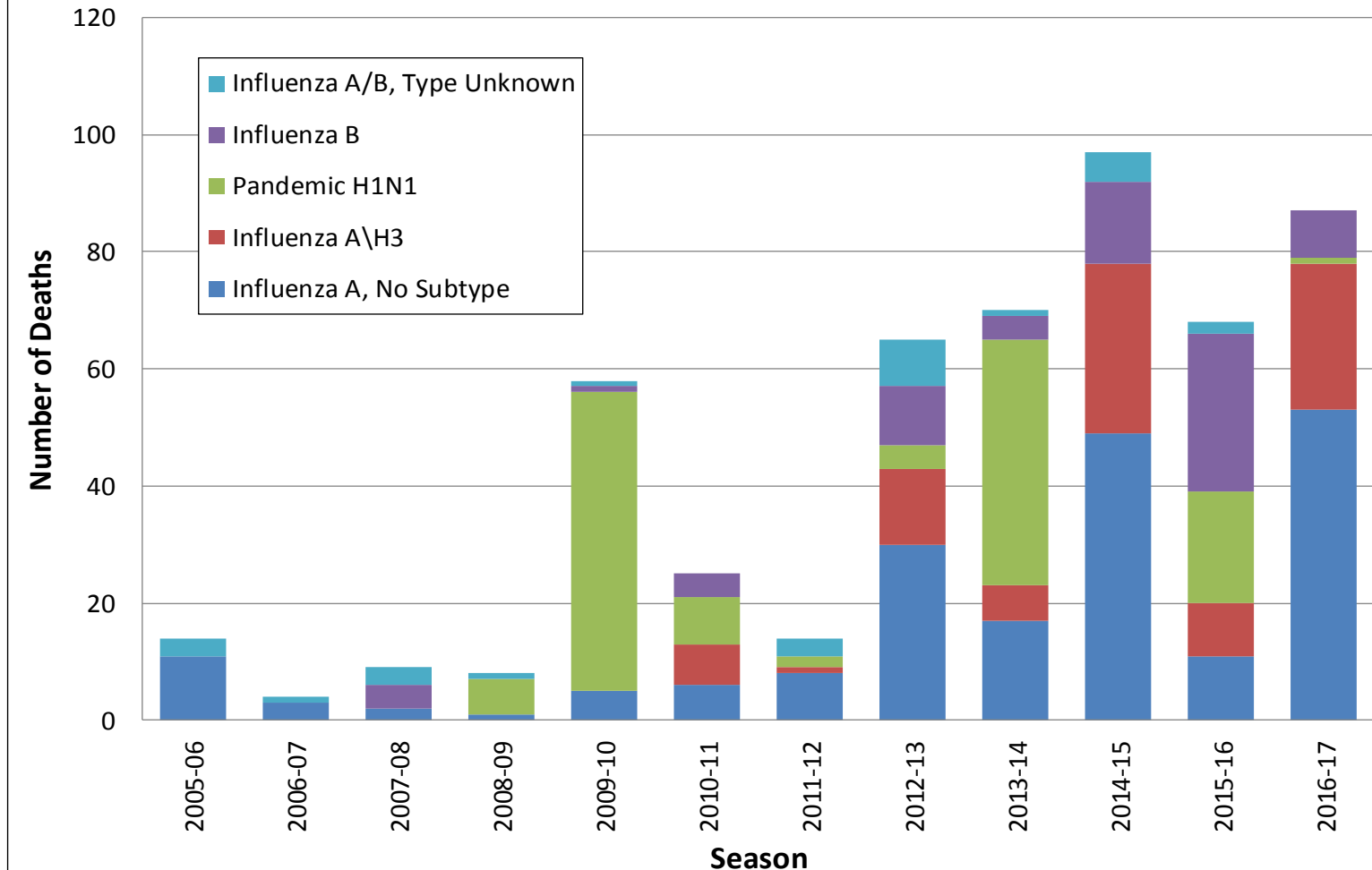
Preliminary Results

Data Source: Reported Influenza Case Reports

# INFLUENZA SURVEILLANCE UPDATE, 2016-17 YTD



## Figure 7. Influenza Deaths by Type, and Season



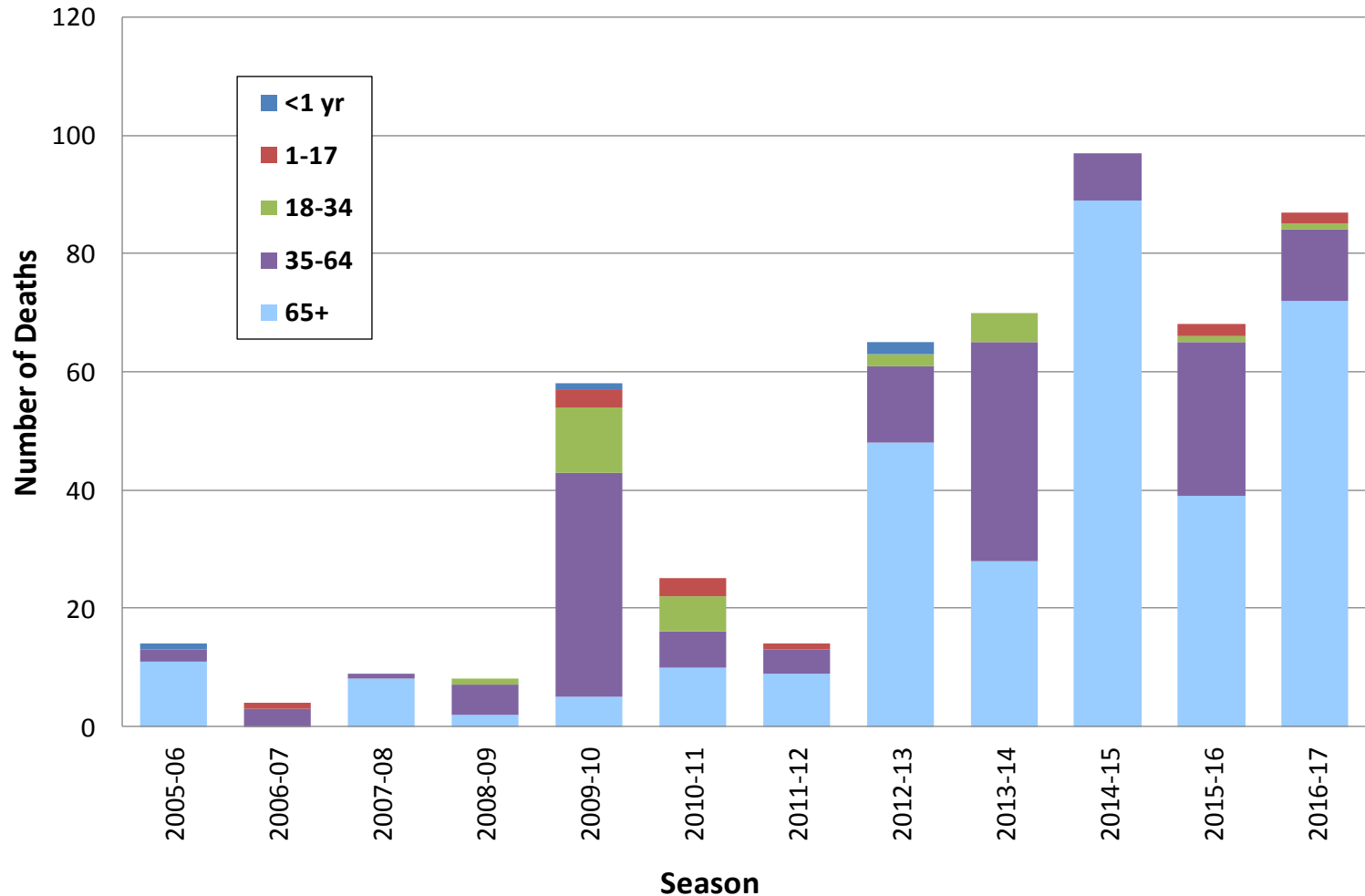
Preliminary Results

Data Source: Reported Influenza Case Reports

# INFLUENZA SURVEILLANCE UPDATE, 2016-17 YTD



## Figure 8. Influenza Deaths by Age and Season



Preliminary Results

Data Source: Reported Influenza Case Reports