



SAN DIEGO COUNTY INFLUENZA SURVEILLANCE

2017-18 YTD

THROUGH WEEK 17, ENDING 4/28/2018



CURRENT UPDATE

Reported Influenza Cases Since July 1, 2017



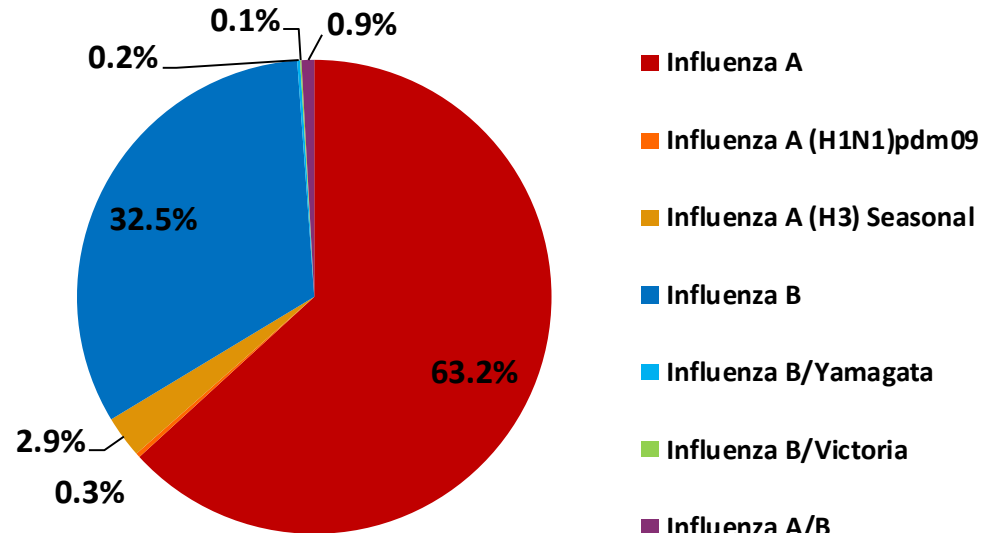
20,757

TOTAL REPORTED
INFLUENZA CASES

300 ICU CASES

341 DEATHS

117 OUTBREAKS



5/1/2018

Preliminary Results
Data Source: Reported Influenza Case Reports
Prepared by County of San Diego, Health & Human Services Agency,
Public Health Services, Epidemiology and Immunization Services Branch

INFLUENZA SURVEILLANCE UPDATE, 2017-18 YTD



Table 1. Influenza Surveillance Indicators

Indicator	FY 2017-18*			FY 2016-17		Prior 3-Year Average**	
	Week 17	Week 16	FYTD#	Week 17	FYTD#	Week 17	FYTD#
All influenza detections reported (rapid or PCR)	96	101	20,757	56	5,484	45	6,137
Percent of emergency department visits for ILI	1%	2%		1%		2%	
Percent of deaths registered with pneumonia and/or influenza	7%	6%		5%		7%	
Number of influenza-related deaths reported^	0	2	341	0	86	0	77

FYTD=Fiscal Year To Date (FY is July 1- June 30, Weeks 27-26). Total deaths reported in prior years: 87 in 2016-17, 68 in 2015-16, and 97 in 2014-15.

* Previous weeks case counts or percentages may change due to delayed processing or reporting.

** Includes FYs 2014-15, 2015-16, and 2016-17.

^ Current FY deaths are shown by week of report; by week of death for prior FYs.

Preliminary Results

Data Source: Reported Influenza Case Reports

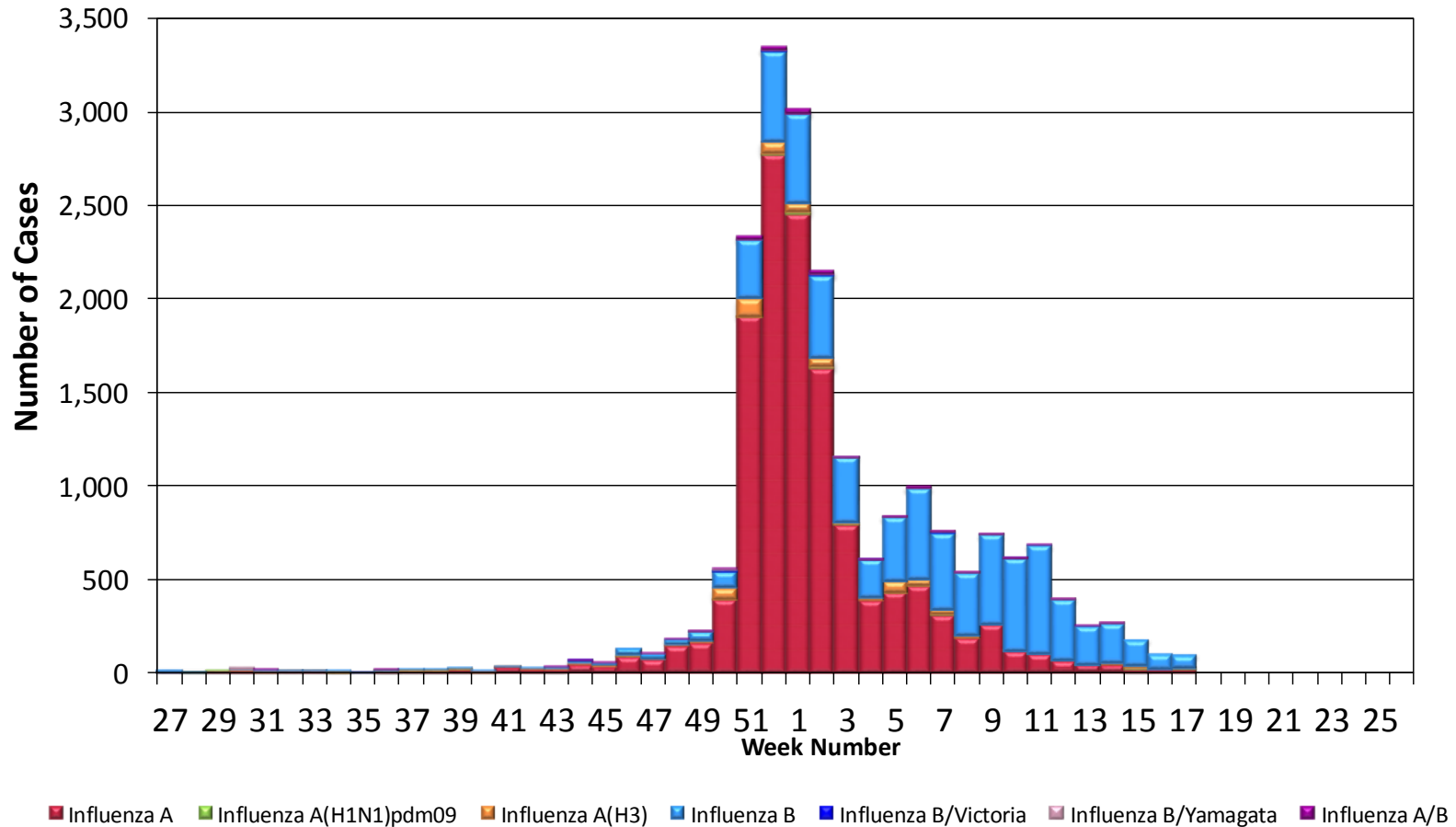
Prepared by County of San Diego, Health & Human Services Agency,
Public Health Services, Epidemiology and Immunization Services Branch

5/1/2018

INFLUENZA SURVEILLANCE UPDATE, 2017-18 YTD



Figure 2. San Diego County Influenza Detections by Type and Week of Report, 2017-18 FYTD (N=20,757)



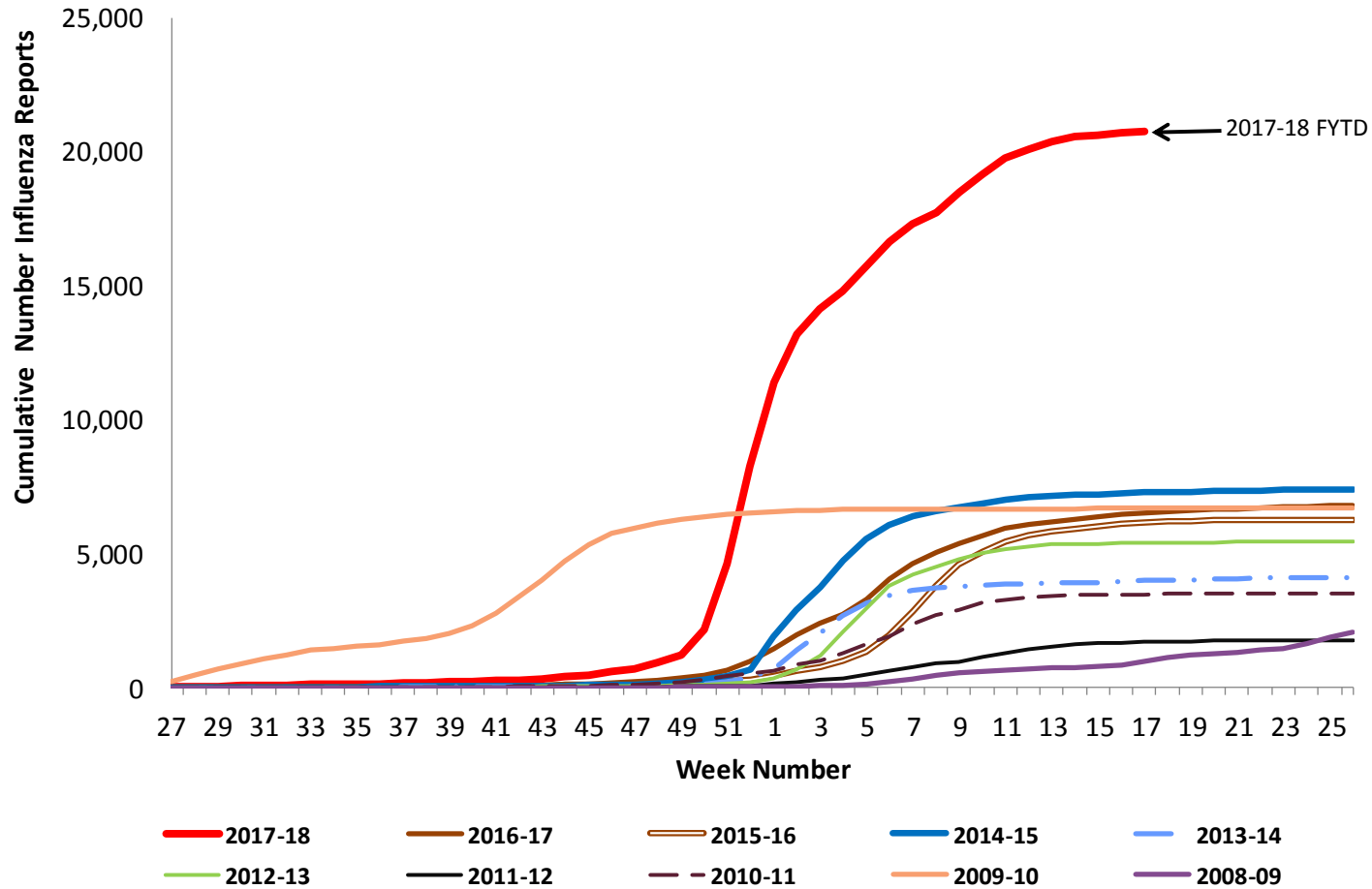
Preliminary Results

Data Source: Reported Influenza Case Reports

Prepared by County of San Diego, Health & Human Services Agency,
Public Health Services, Epidemiology and Immunization Services Branch



Figure 4. Cumulative Influenza Case Reports by Episode Week & Season



Preliminary Results

Data Source: Reported Influenza Case Reports

Prepared by County of San Diego, Health & Human Services Agency,
Public Health Services, Epidemiology and Immunization Services Branch



Table 2. Influenza Detections Reported, FY 2017-18*

Positive Test Type/Subtype	Week 17	Total FY-To-Date
Influenza A†	20	13,117
Influenza A(H1N1) Pandemic 2009	2	62
Influenza A (H3) Seasonal	5	594
Influenza B†	69	6,745
Influenza B/Victoria	0	19
Influenza B/Yamagata	0	41
Influenza A/B†	0	179
Total	96	20,757

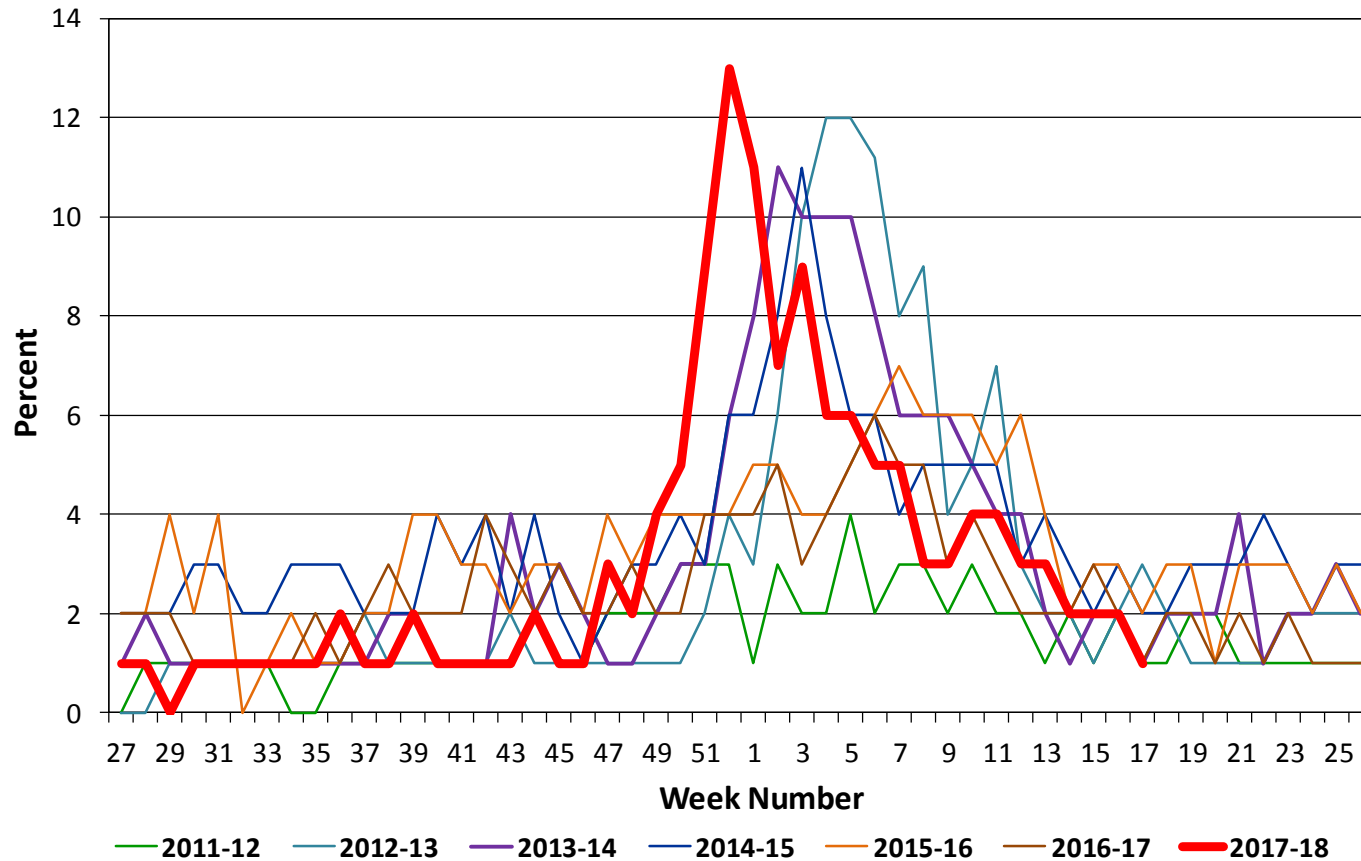
* FY is July 1- June 30.

† No further characterization performed, or results were not yet available at time of publication.

Note: Totals may change due to further laboratory findings.



Figure 1. Percent of Emergency Department Visits for Influenza-like Illness by Week and FY



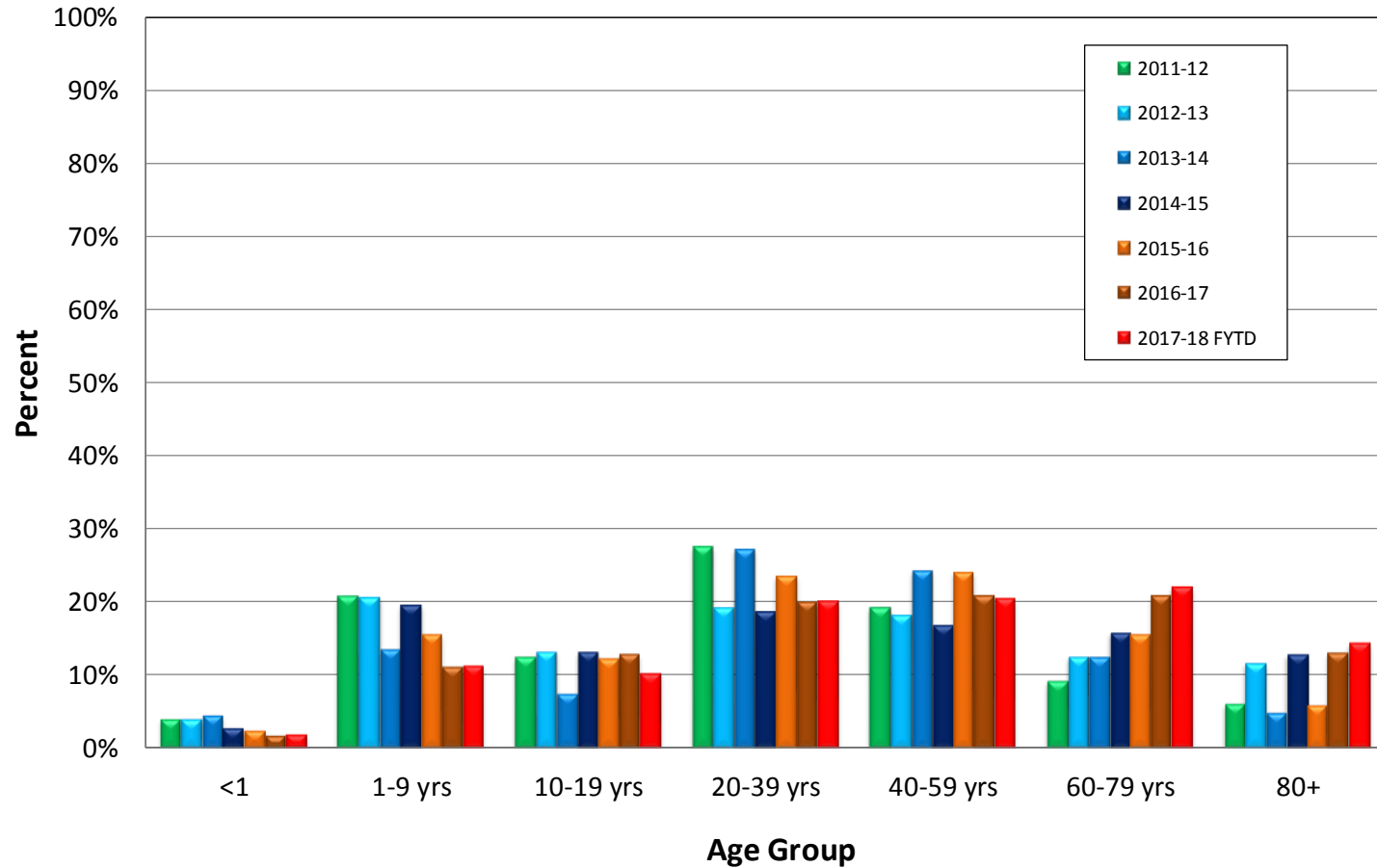
Preliminary Results

Data Source: Reported Influenza Case Reports

Prepared by County of San Diego, Health & Human Services Agency,
Public Health Services, Epidemiology and Immunization Services Branch



Figure 3. Percent of Reported Influenza Cases by Age Group and Season, 2011-12 to 2017-18 FYTD



Preliminary Results

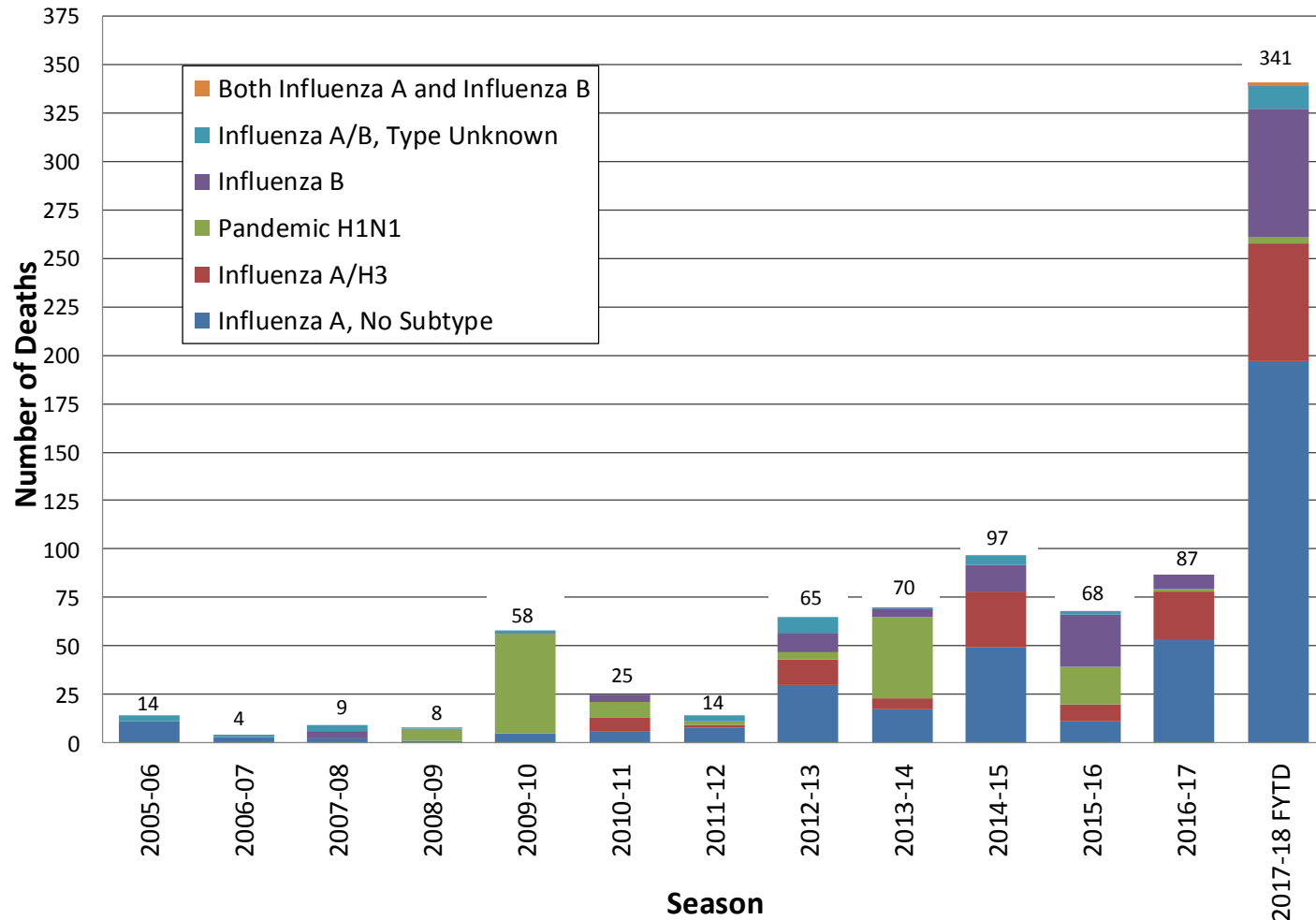
Data Source: Reported Influenza Case Reports

Prepared by County of San Diego, Health & Human Services Agency,
Public Health Services, Epidemiology and Immunization Services Branch

INFLUENZA SURVEILLANCE UPDATE, 2017-18 YTD



Figure 7. Influenza Deaths by Type and Season



Preliminary Results

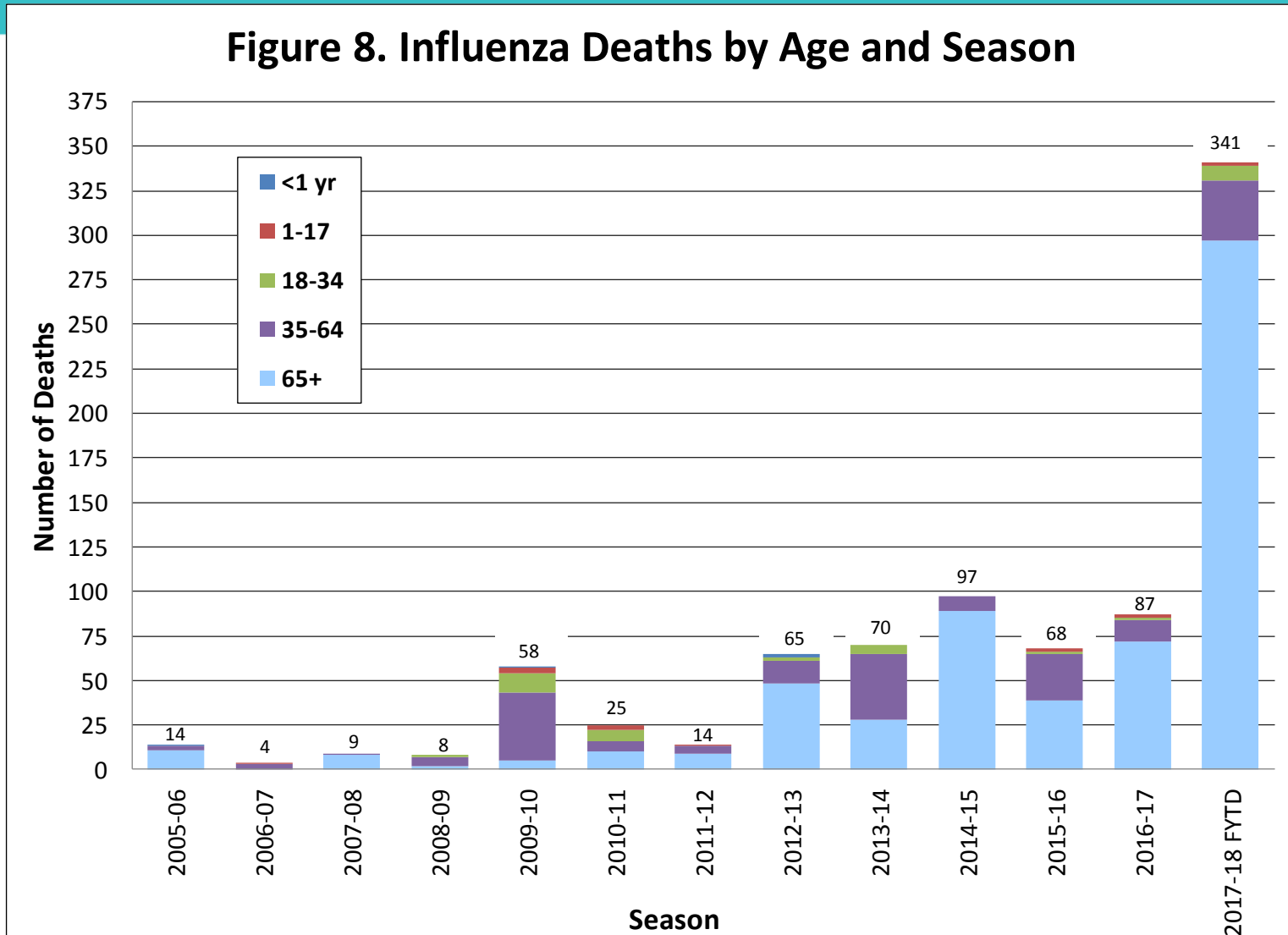
Data Source: Reported Influenza Case Reports

Prepared by County of San Diego, Health & Human Services Agency,
Public Health Services, Epidemiology and Immunization Services Branch

INFLUENZA SURVEILLANCE UPDATE, 2017-18 YTD



Figure 8. Influenza Deaths by Age and Season



Preliminary Results

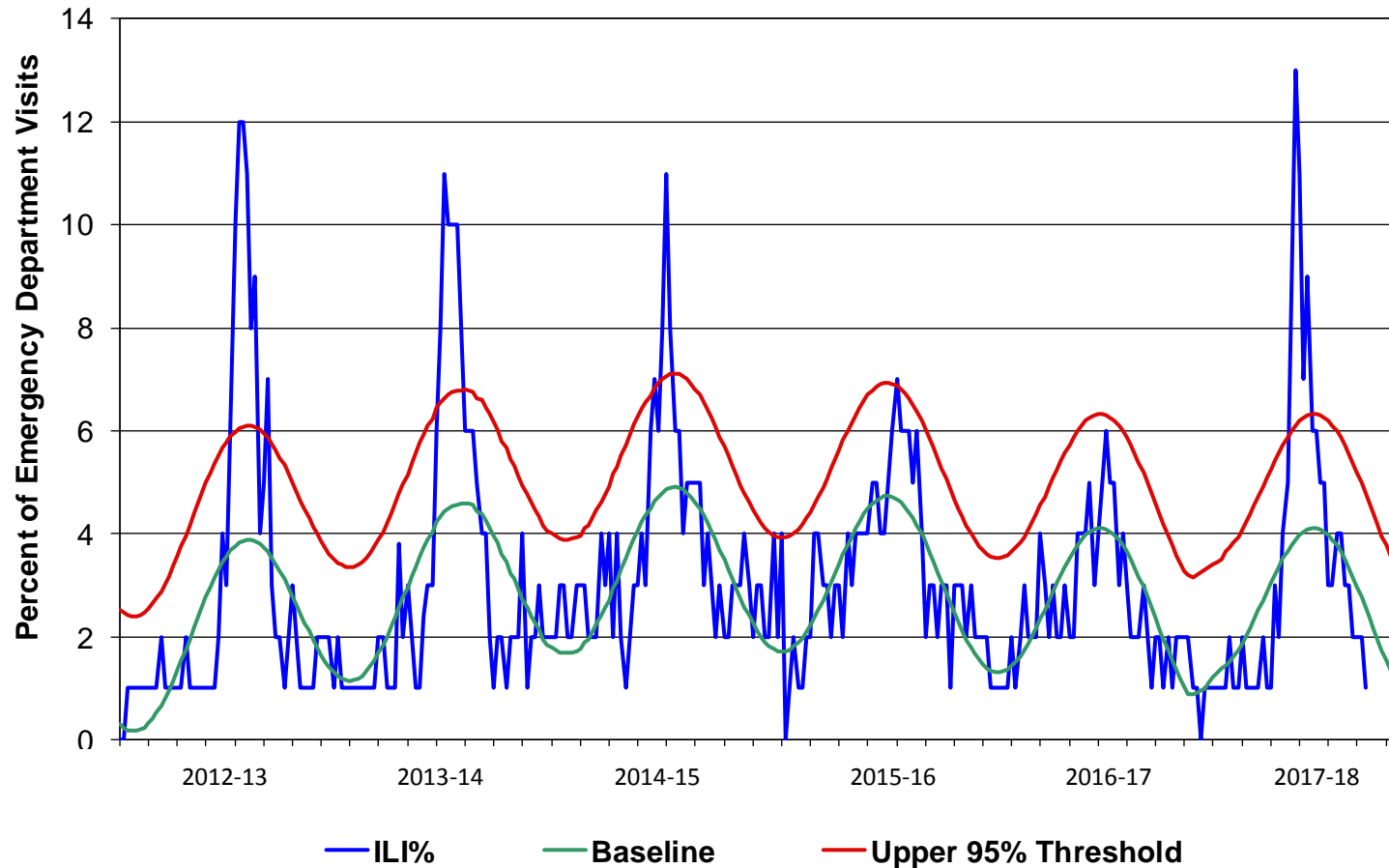
Data Source: Reported Influenza Case Reports

Prepared by County of San Diego, Health & Human Services Agency,
Public Health Services, Epidemiology and Immunization Services Branch

INFLUENZA SURVEILLANCE UPDATE, 2017-18 YTD



Figure 5. Percent of San Diego County Emergency Department Visits for Influenza-like Illness by Week and FY Compared to 5-Year Baseline & Upper 95% Threshold Values (Serfling Method)



Preliminary Results

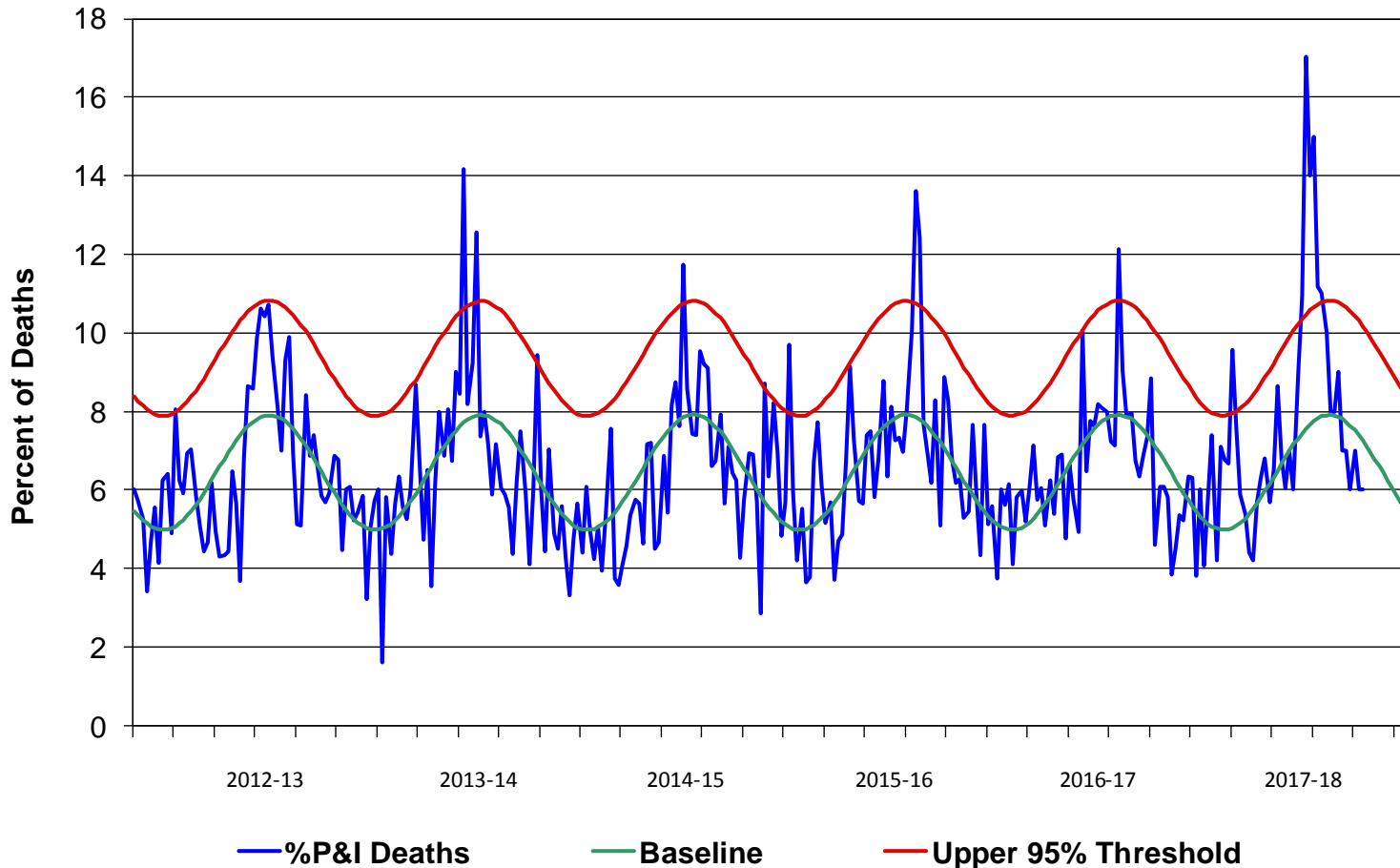
Data Source: Reported Influenza Case Reports

Prepared by County of San Diego, Health & Human Services Agency,
Public Health Services, Epidemiology and Immunization Services Branch

INFLUENZA SURVEILLANCE UPDATE, 2017-18 YTD



Figure 6. Percent of San Diego County Deaths Registered with Pneumonia and/or Influenza by Week and FY Compared to Prior 5-Year Baseline & Upper 95% Threshold Values (Serfling Method)

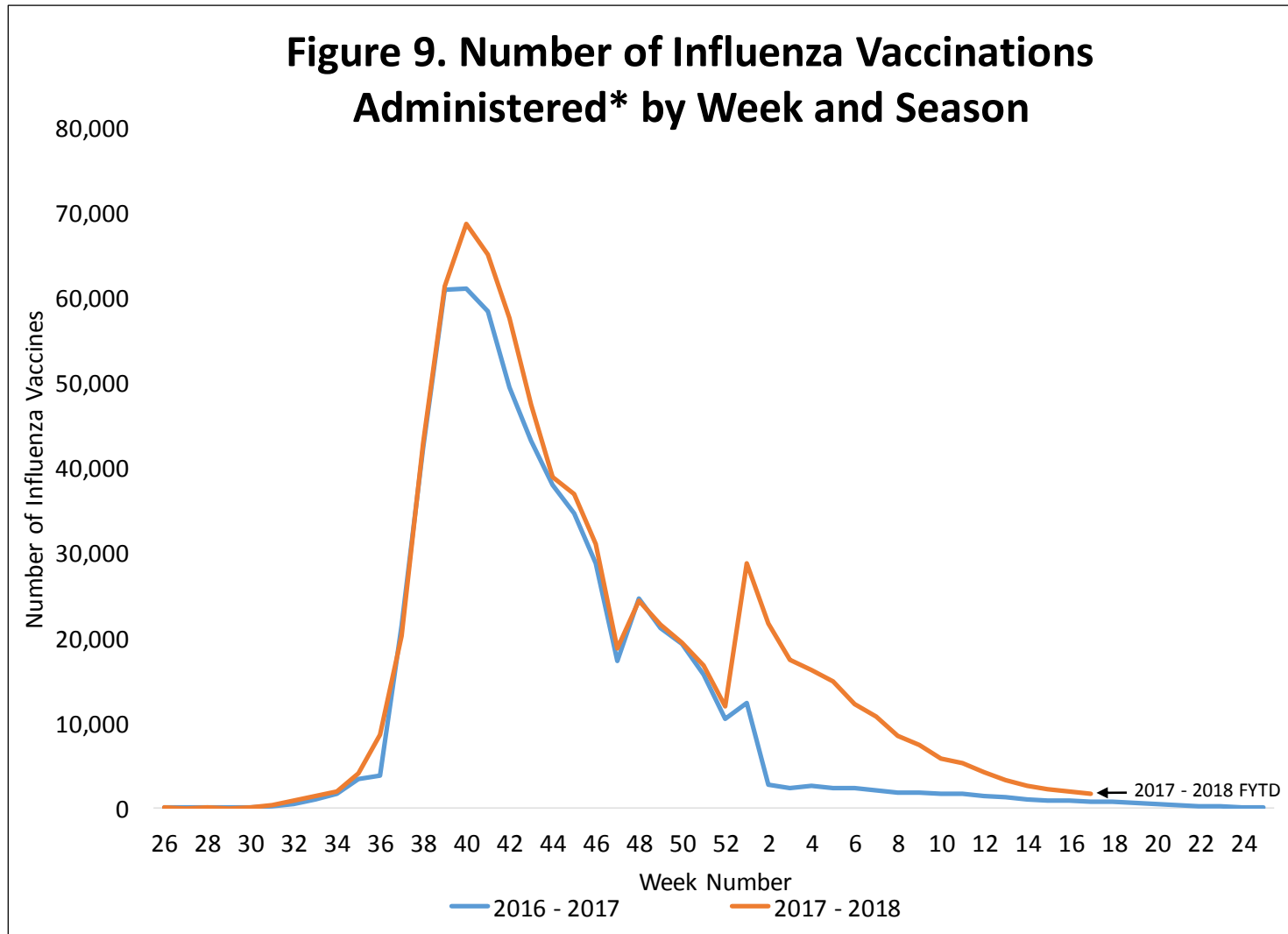


Preliminary Results

Data Source: Reported Influenza Case Reports

Prepared by County of San Diego, Health & Human Services Agency,
Public Health Services, Epidemiology and Immunization Services Branch

INFLUENZA SURVEILLANCE UPDATE, 2017-18 YTD



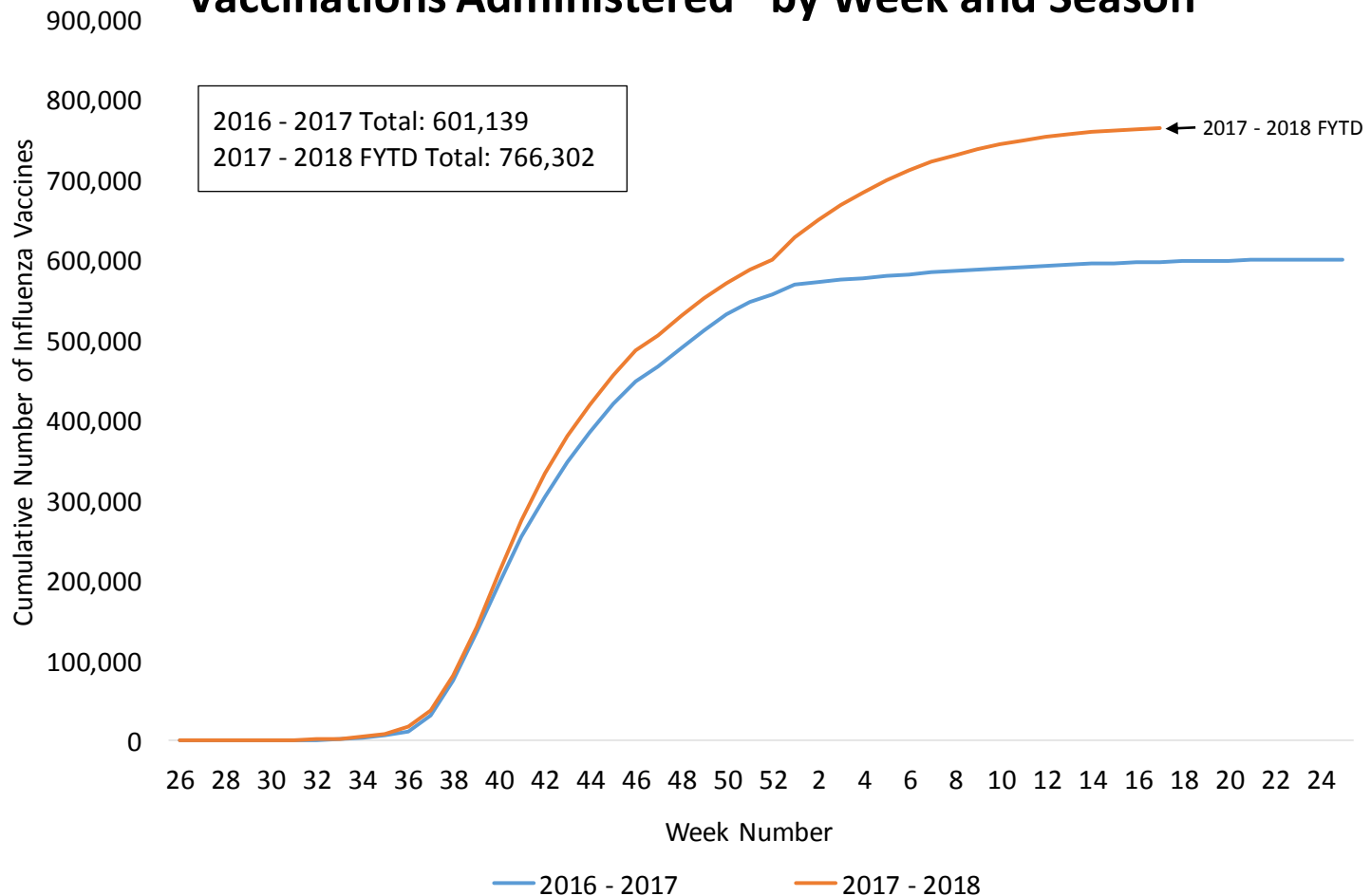
Preliminary Results

Data Source: San Diego Immunization Registry

Prepared by County of San Diego, Health & Human Services Agency,
Public Health Services, Epidemiology and Immunization Services Branch



Figure 10. Cumulative Number of Influenza Vaccinations Administered* by Week and Season



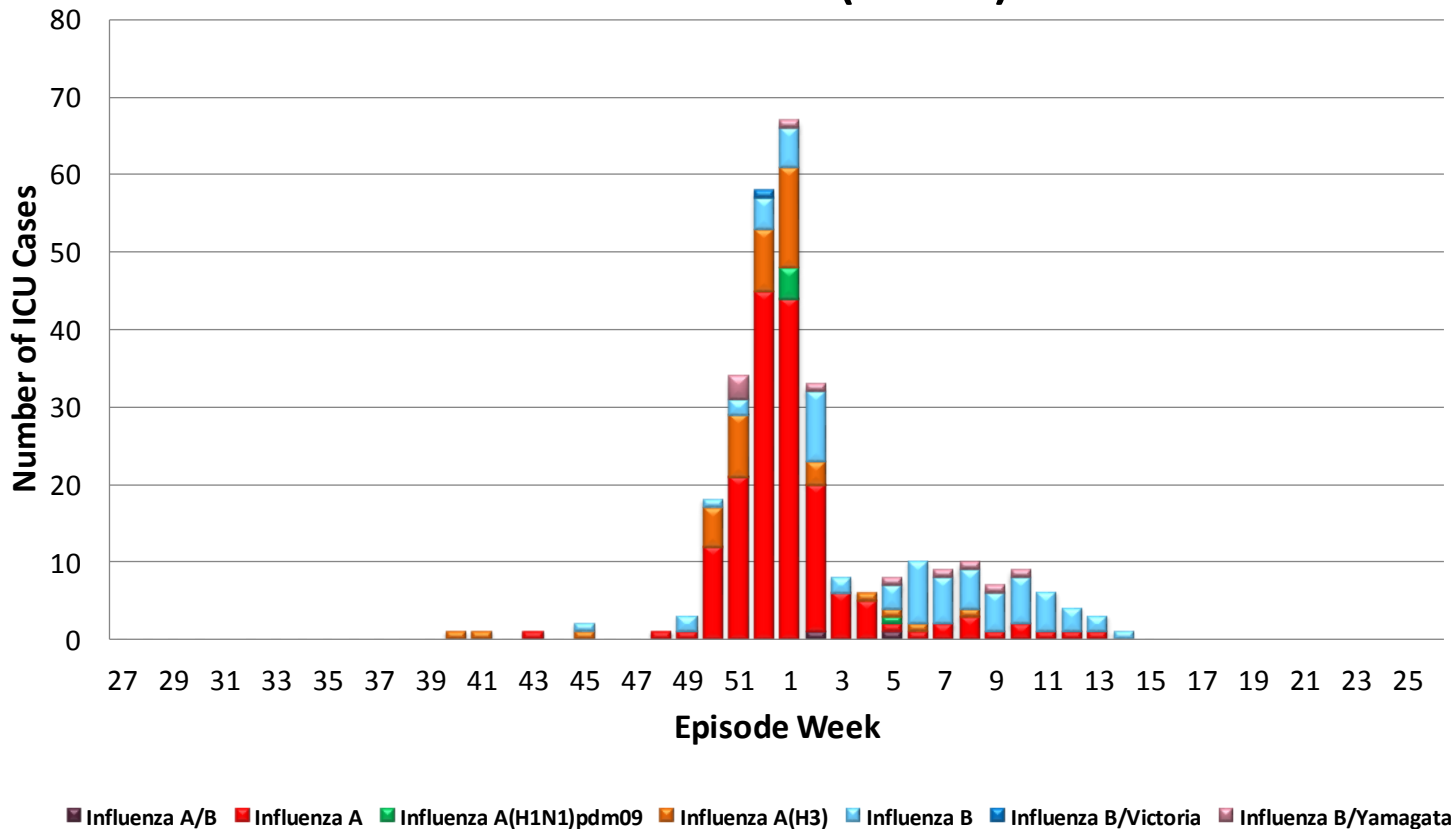
Preliminary Results

Data Source: San Diego Immunization Registry

Prepared by County of San Diego, Health & Human Services Agency,
Public Health Services, Epidemiology and Immunization Services Branch



Figure 11. Number of Influenza Cases Requiring ICU Care by Episode Week and Type of Influenza, 2017-18 FYTD (N=300)



Preliminary Results

Data Source: Reported Influenza Case Reports
Prepared by County of San Diego, Health & Human Services Agency,
Public Health Services, Epidemiology and Immunization Services Branch



Weekly Influenza Watch Surveillance Report

This is the final *Influenza Watch* surveillance report for this season. If you have any comments or suggestions regarding the Influenza Watch, please email us at EpiDiv.HHSA@sdcounty.ca.gov.

A final flu season summary will be made available in July, and the weekly *Influenza Watch* report will resume again sometime in October, 2018.